



Leaders

Tamader Aloofy

Mohammed Aldaheri

Members

Ibtihal Al-Amer

Nasser Alsaleh

Raghda Al Amri

Mosaed Aldekhayel

Walaa Al Shehri

Abeer Al-Suwailem

Nouf Aboalsamh

The three important things are:

1-Identify the section

2-Lining epithelium

3-Identifying features

Esophagus

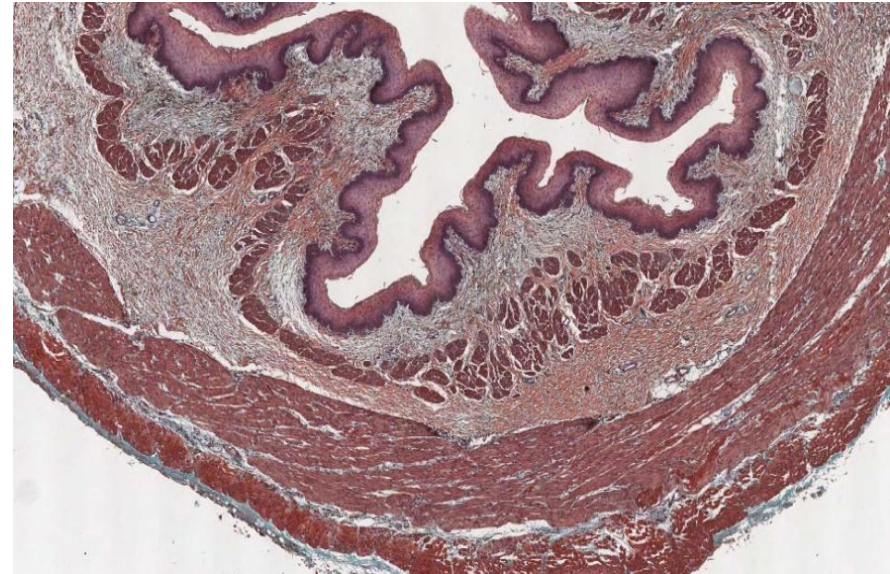
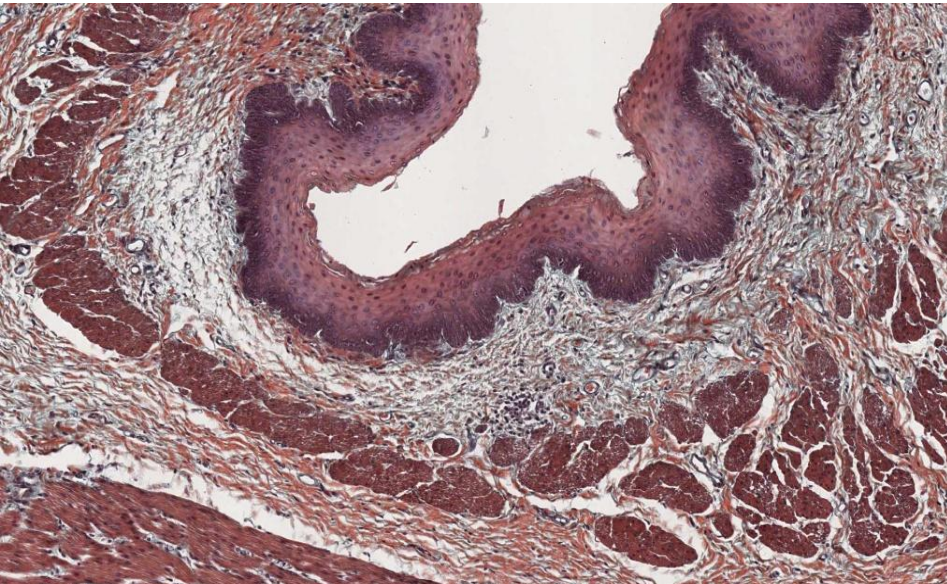
Lining epithelium: Non-Keratinized Stratified Squamous Epithelium

Identifying features:

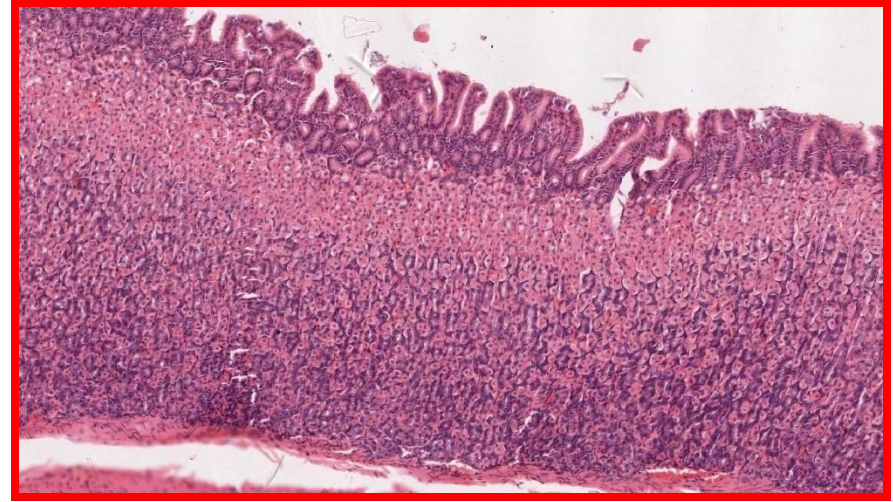
1-Muscularis mucosa

2-Non keratinized stratified squamous epithelium

3-Muscularis externa(inner circular – outer longitudinal)



Fundus of stomach



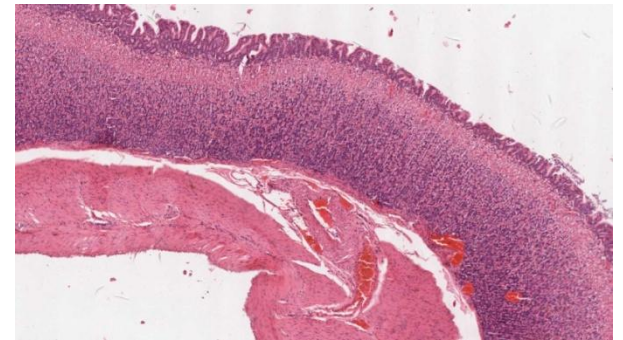
Lining epithelium: simple columnar epithelium.

Identifying features:

1-simple columnar epithelium.

2-The fundic pit ratio 1:4 of mucosa thickness

3-Muscularis mucosa.



Pylorus of the stomach

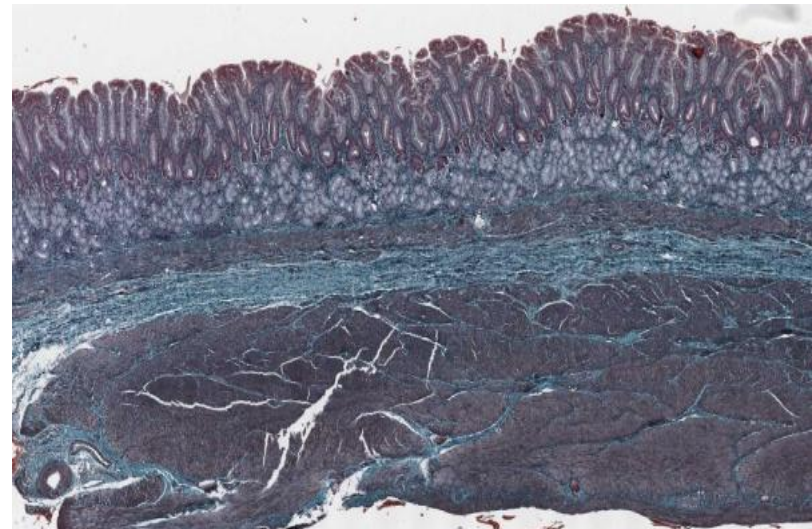
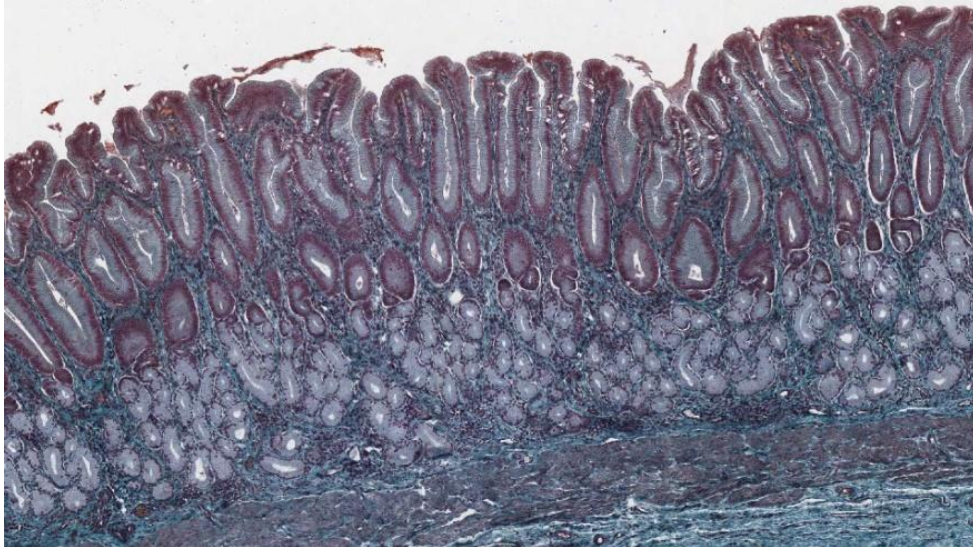
Lining epithelium: simple columnar epithelium.

Identifying features:

1-Simple columnar epithelium

2-The proportion of the pit and the body of the gland is 1:1

3-Muscularis mucosa



Duodenum

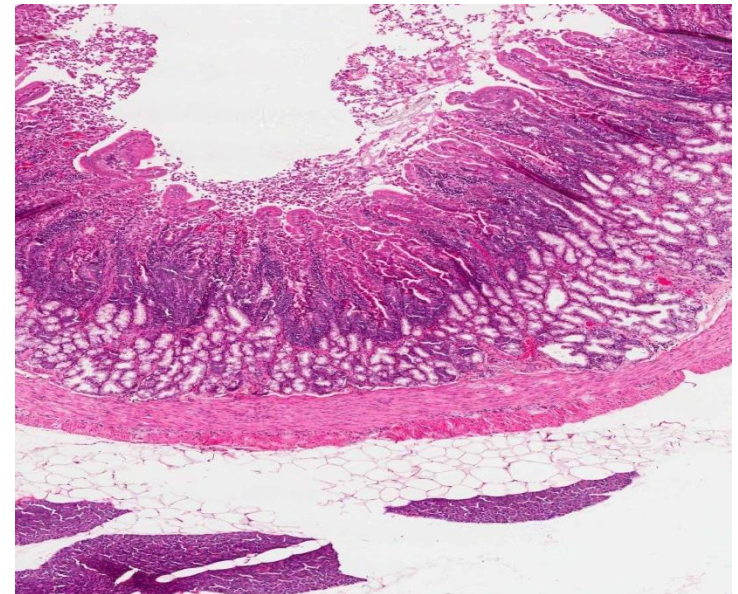
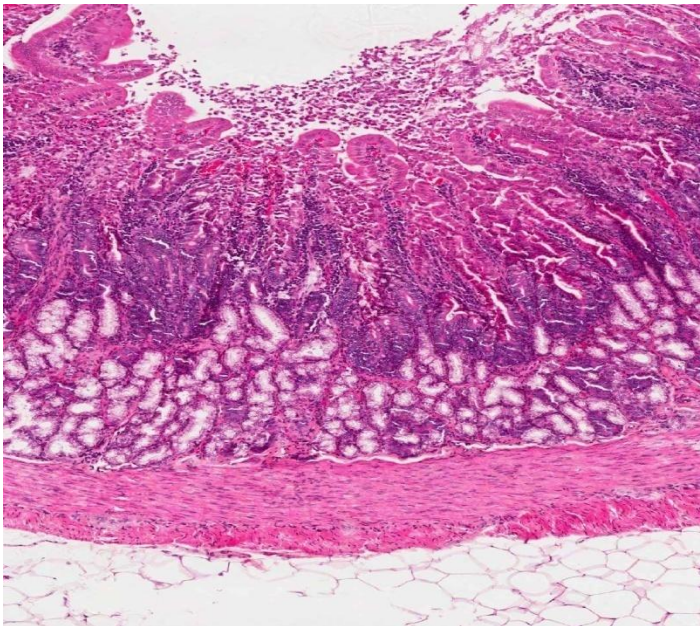
Lining epithelium: simple columnar epithelium with goblet cells

Identifying features:

1-Intestinal villi

2-Brunners gland (in the submucosa)

3-Intestinal crypts.



Ileum (be aware from the spelling)

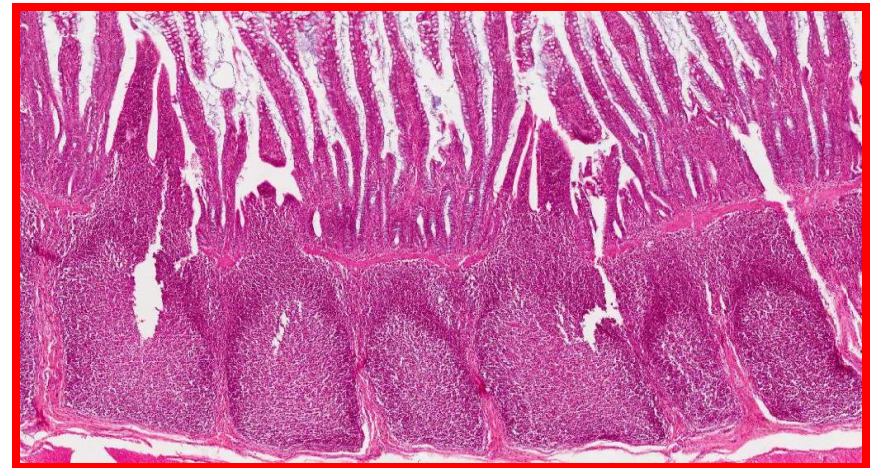
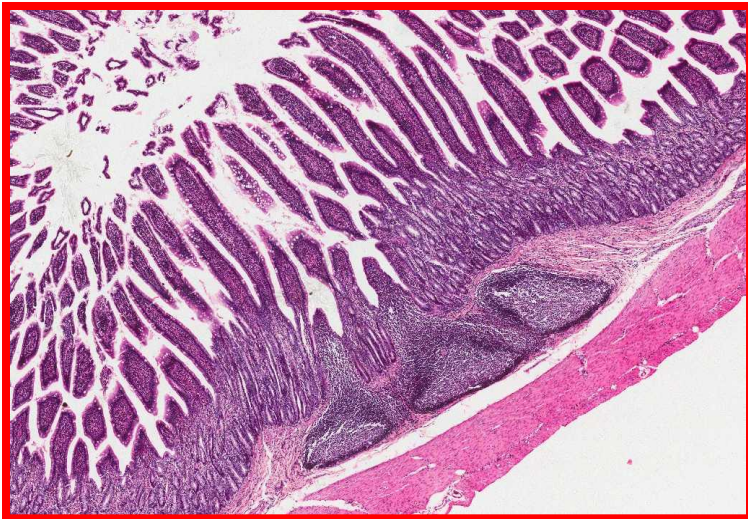
Lining epithelium: Simple columnar epithelium with goblet cells

Identifying features:

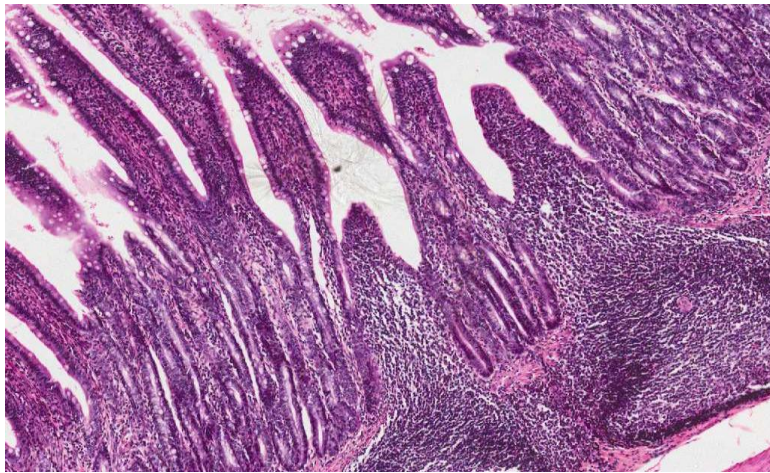
1-Intestinal villi.

2-Payers patches.

3-Intestinal crypts



More pictures for the ileum (The Two pictures in the previous slide are the most important)

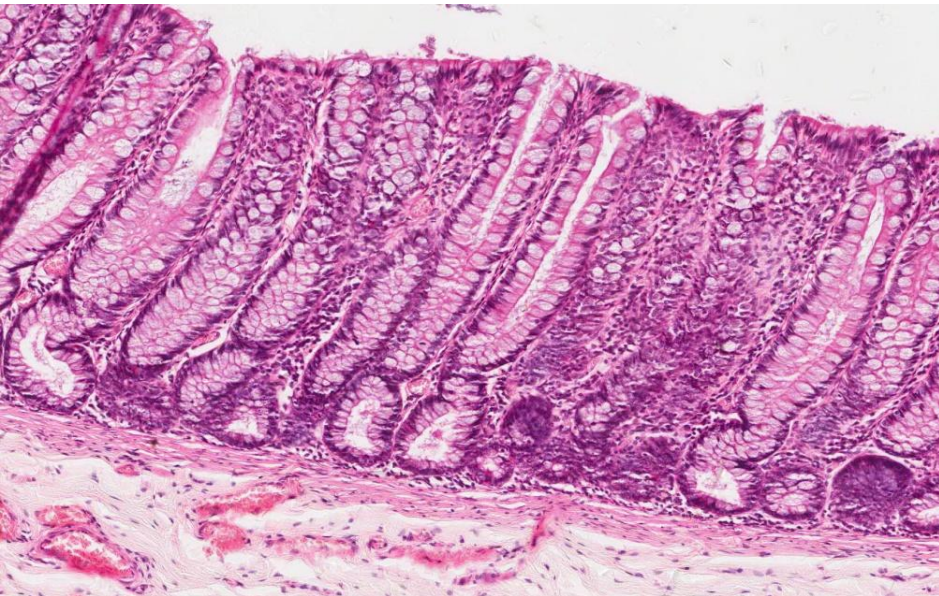


Colon

Lining epithelium: Simple columnar epithelium with goblet cells.

Identifying features:

- 1-Numerous goblet cells.
- 2-**No** intestinal villi.
- 3-Muscularis mucosa.



Appendix

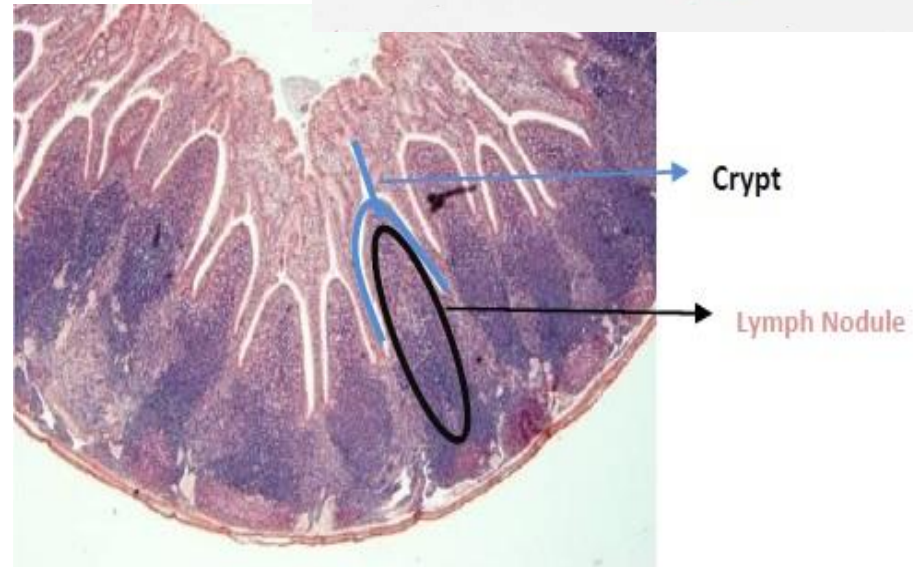
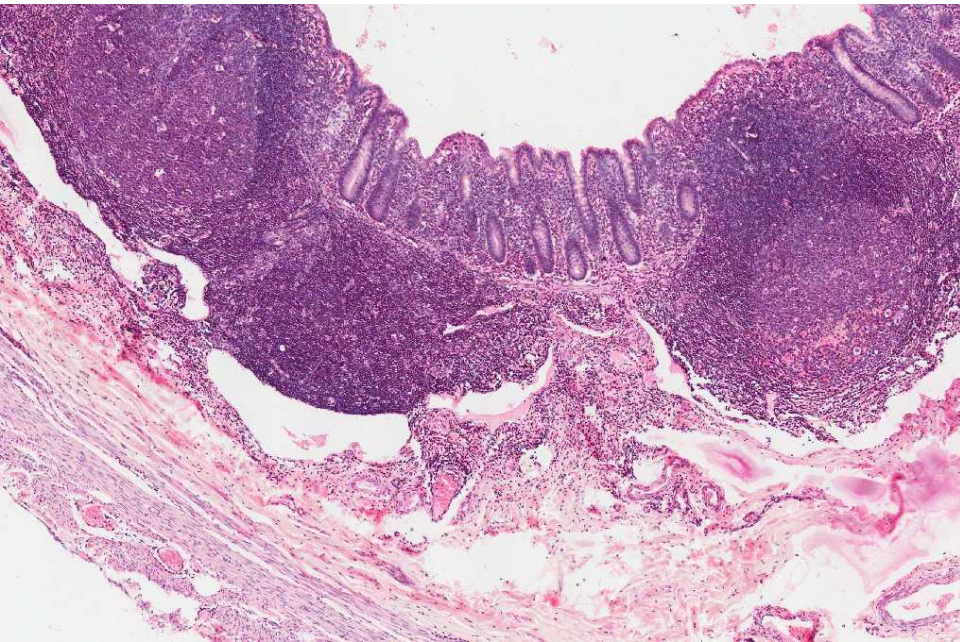
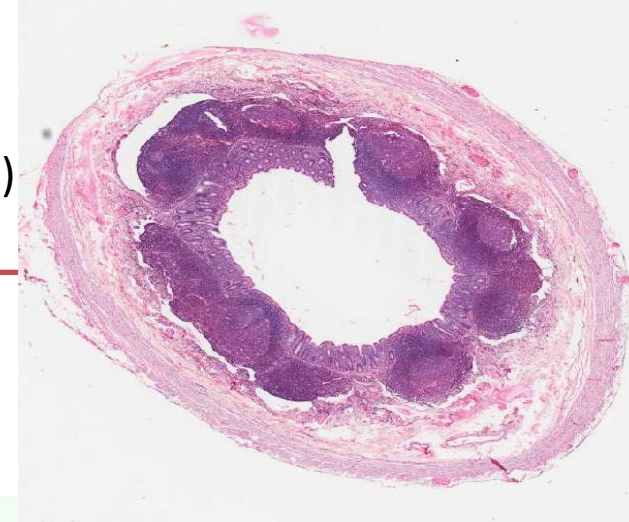
Lining epithelium: Simple columnar epithelium with goblet cells.

Identifying features:

1-No intestinal villi.

2-Lymph nodules(in the lamina propria) (1:3 of gland height)

3-Simple columnar epithelium with goblet cells.



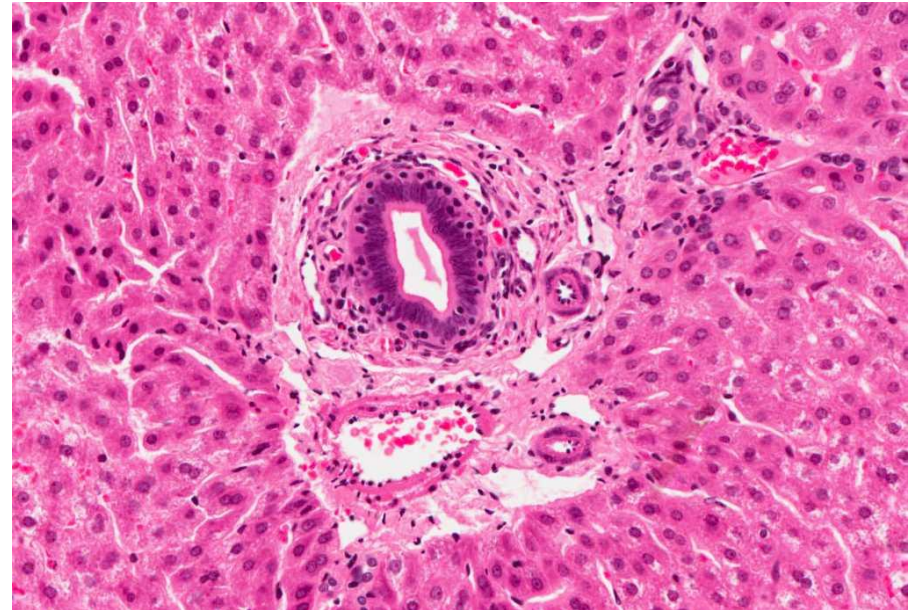
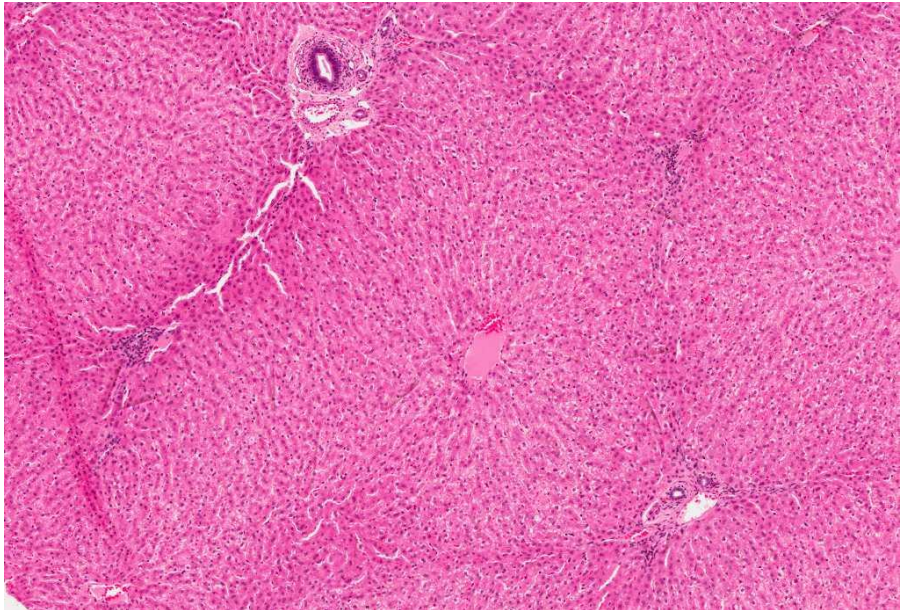
Liver

Portal area:

1-Bile duct.

2-Branch of portal vein.

3-Branch of hepatic artery.



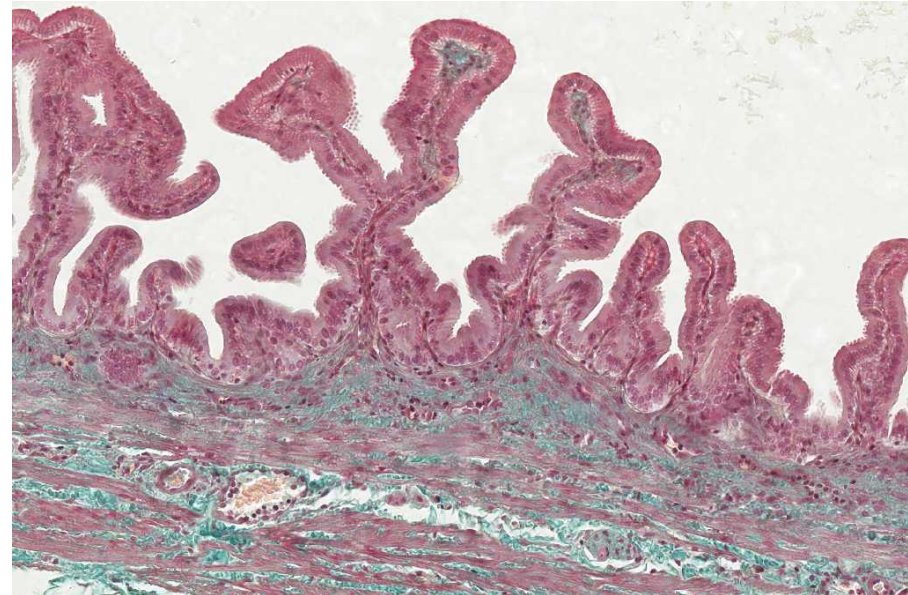
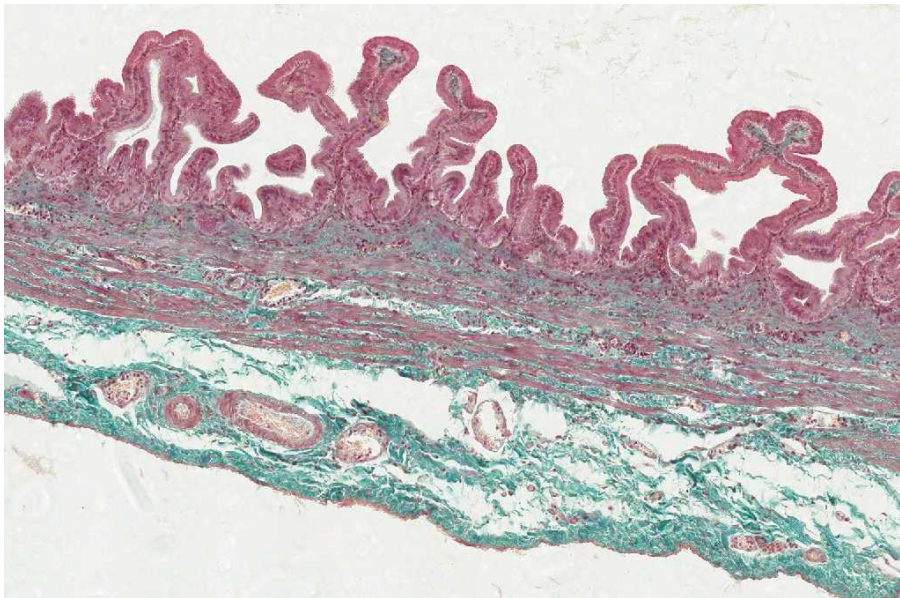
Gall Bladder

Lining epithelium: Simple columnar epithelium.

Identifying features:

1-Mucosal folds.

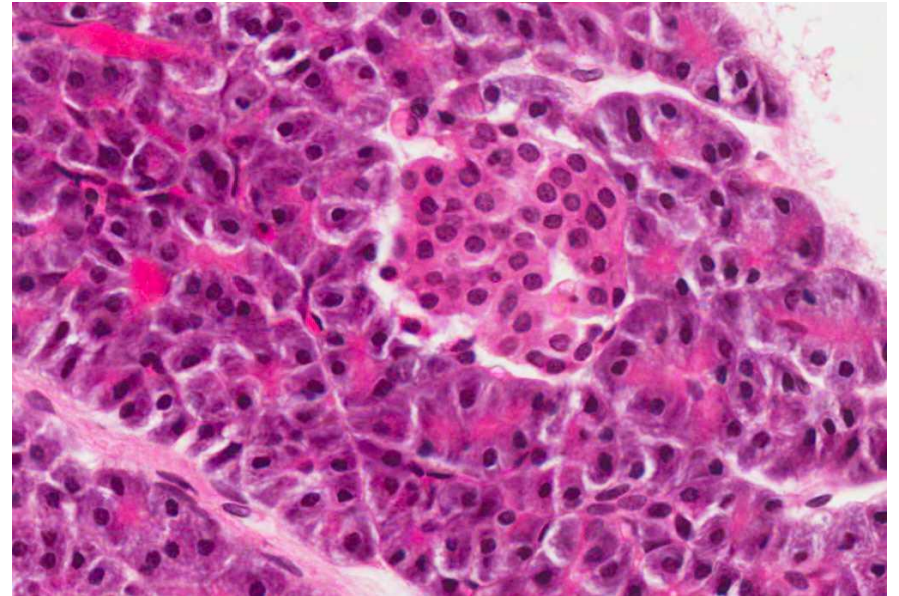
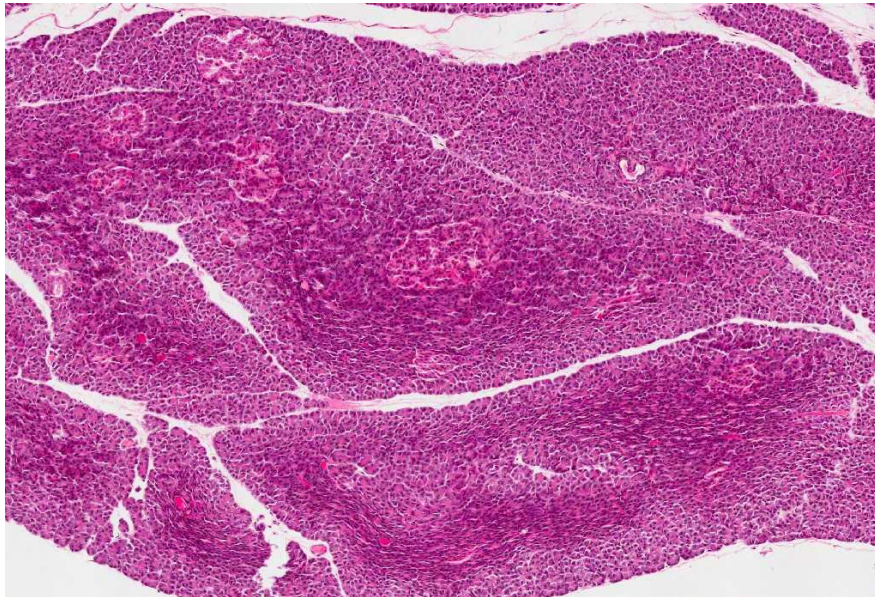
2-Serosa.



Pancreas (Not very important)

Identifying features:

- 1-Islets of langerhans.
- 2-Lobules of pancreatic acini.



Spleen

1-White pulp:
Lymphatic nodule.
Central artery

2-Red pulp.

