

# Histology Team 431



## Leaders

Tamader Aloofy

Mohammed Aldaheri

## Members

Ibtihal Al-Amer

Nasser Alsaleh

Raghda Al Amri

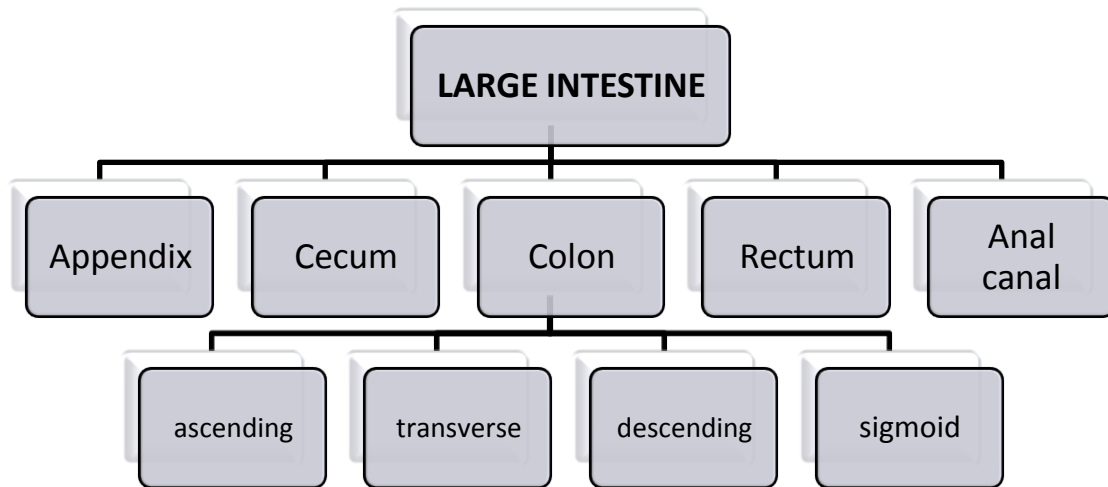
Mosaed Aldekhayel

Walaa Al Shehri

Abeer Al-Suwailem

Nouf Aboalsamh

# LARGE INTESTINE



## 1. Mucosa:

Shows **only crypts (NO villi)**

- **Epithelium:** simple columnar epithelium with numerous goblet cells.
- **Lamina propria:** Connective tissue containing numerous crypts. Cells of the crypts are the same as in small intestine but NO Paneth cells. Lymphatic nodules: frequent.
- **Muscularis mucosae:** 2 layers of smooth muscle.

## 2. Submucosa:

- **NO glands.**

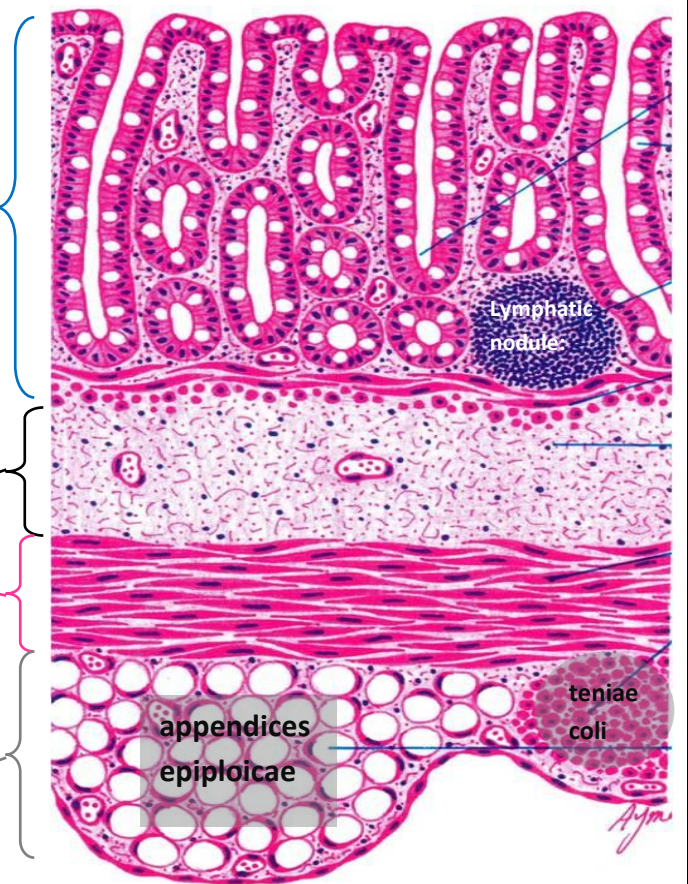
## 3. Muscularis Externa:

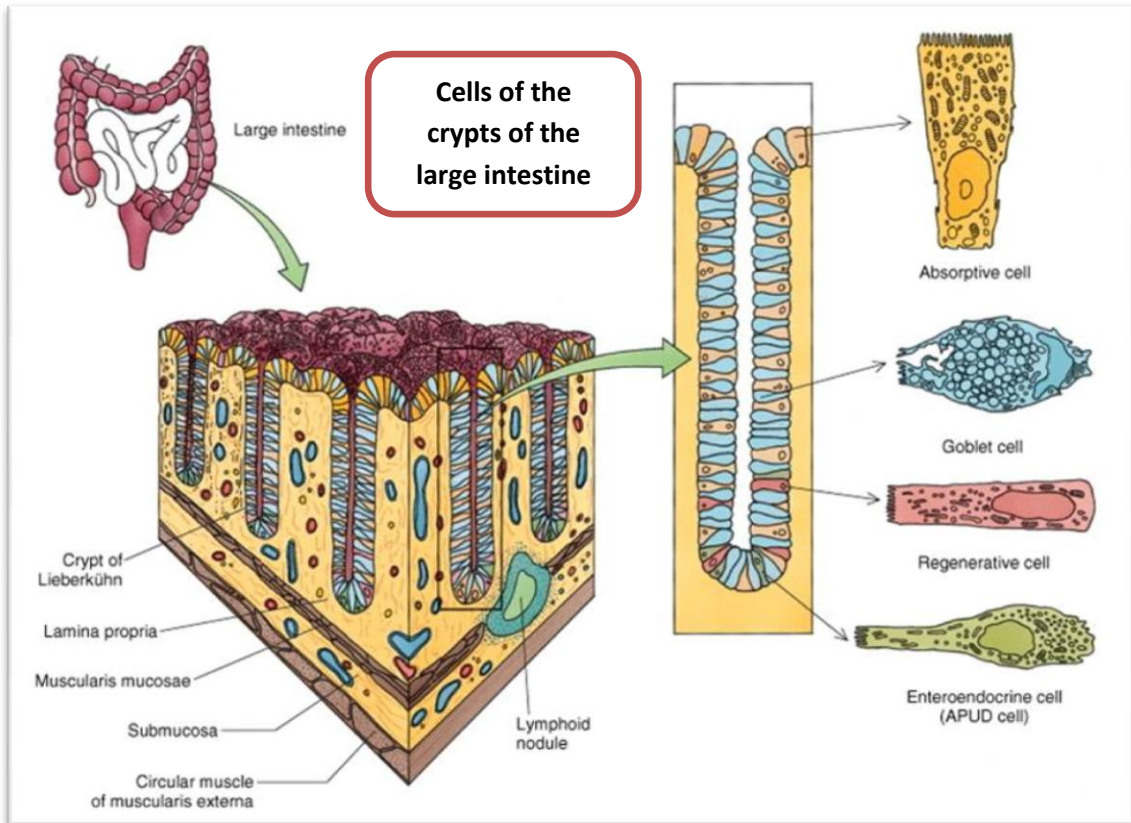
- Inner circular & outer longitudinal smooth muscle layers.

**The longitudinal layer is not continuous but in the form of 3 ribbons (teniae coli).**

## 4. Serosa:

- C.T. covered by mesothelium.
- Has fat-filled pouches called **appendices epiploicae**.





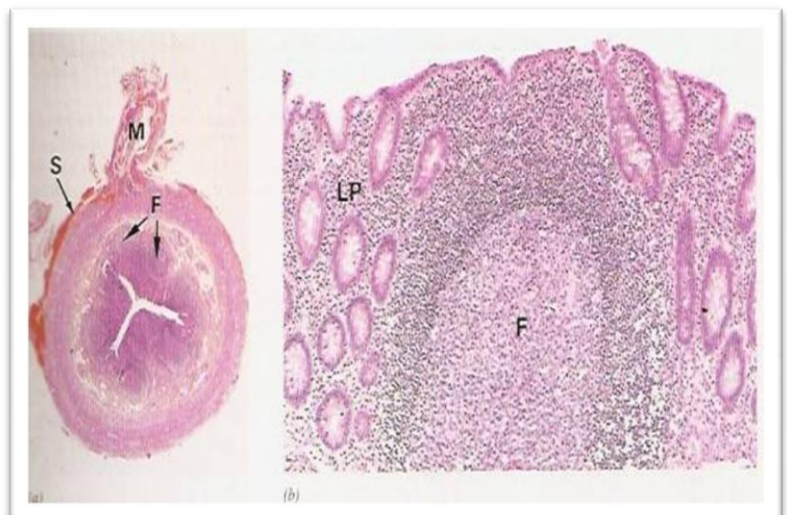
## Vermiform Appendix

Similar to the colon, but with much smaller diameter, shallow crypts, more lymphoid nodules, and more DNES cells.

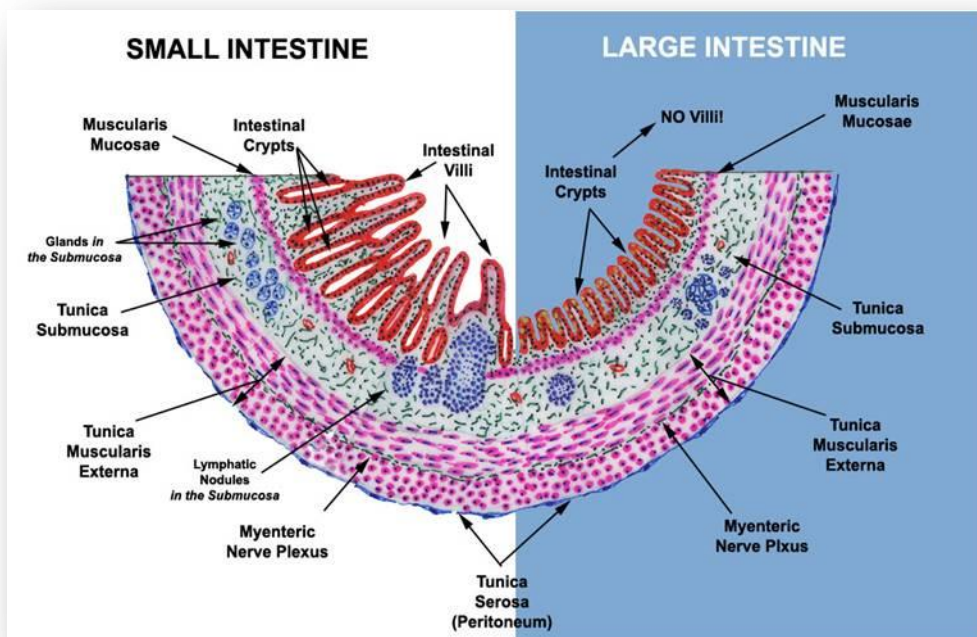
### ■ Cells lining the crypts are:

- Surface absorptive cells.
- Goblet cells.
- Enteroendocrine cells.
- M-cells.
- Stem cells.

### ■ It is invested by serosa



Vermiform Appendix of Rabbit  
( Just for the OSPE )



## MCQs

Q1: Where can we find the most number of goblet cells?

- a. Esophagus
- b. Stomach
- c. Small intestine
- d. Large intestine

Q2: Where is the **mesothelium** ?

- a. Mucosa
- b. Sub mucosa
- c. Muscularis externa
- d. Serosa

Q3: What are the modifications of the **muscularis externa** that is seen on the **large intestine**?

- a. Teniae coli
- b. Crypts of Lieberkuhn
- c. Striated border
- d. Villi

1-D , 2-D , 3-A