

# Histology Team 431



## Leaders

Tamader Aloofy

Mohammed Aldaheri

## Members

Ibtihal Al-Amer

Nasser Alsaleh

Raghda Al Amri

Ahmed Saleem

Walaa Al Shehri

Mosaed Aldekhayel

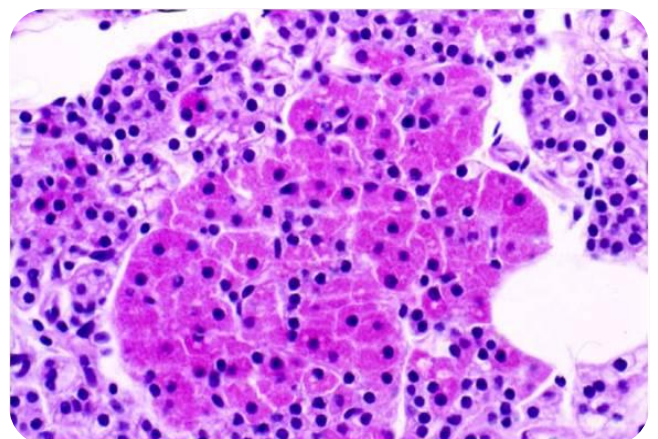
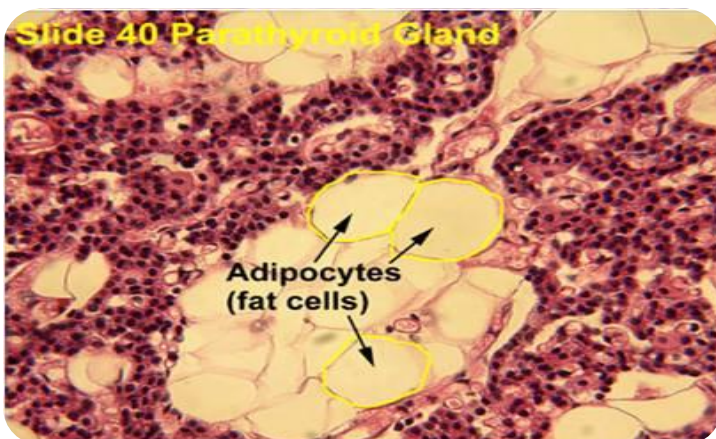
Abeer Al-Suwailem

Nouf Aboalsamh

## PARATHYROID GLANDS

- They are 4 glands on the posterior of thyroid gland.

1) <u>Stroma</u>			2) <u>Parenchyma</u>	
1- Capsule	2. Septa	3. Reticular C.T.	Is formed of cords or clusters of epithelial cells ( <u>chief cells</u> & <u>oxyphil cell</u> ) with blood capillaries in between. These cells are surrounded by reticular fibers.	
Each gland has its Thin capsule	Thin		1. Chief cells:	2. Oxyphil cells:
<ul style="list-style-type: none"> <li>• C.T. stroma in <u>older adults</u> often contains contains many adipose cells.</li> </ul>			<ul style="list-style-type: none"> <li>- <u>Slightly</u> eosinophilic.</li> <li>- rich in <b>rER</b>.</li> <li>- Secrete parathyroid hormone (↑ blood calcium).</li> </ul>	<ul style="list-style-type: none"> <li>- Arranged in groups or clusters or as isolated cells.</li> <li>- Deep eosinophilic</li> <li>- <b>Have more numerous mitochondria</b></li> <li>- Less numerous, but larger than chief cells.</li> <li>- They are of unknown function</li> </ul> <p style="text-align: center;">N.B. ( They may be inactivated chief cells).</p>



## QUESTIONS

1-The number of mitochondria in the oxyphil cells is:

- A- Equal to the number in chief cells.
- B- More numerous than chief cells.
- C- Less than chief cells.

2-What is the function of the parathyroid hormone?

- A- Increase blood thyroxin.
- B- Decrease blood calcium.
- C- Increase blood calcium.
- D- Decrease blood thyroxin.

## ANSWERS

1-B , 2-C