



Leaders

Tamader Aloofy

Mohammed Aldaheri

Members

Ibtihal Al-Amer

Nasser Alsaleh

Raghda Al Amri

Ahmed Saleem

Walaa Al Shehri

Mosaed Aldekhayel

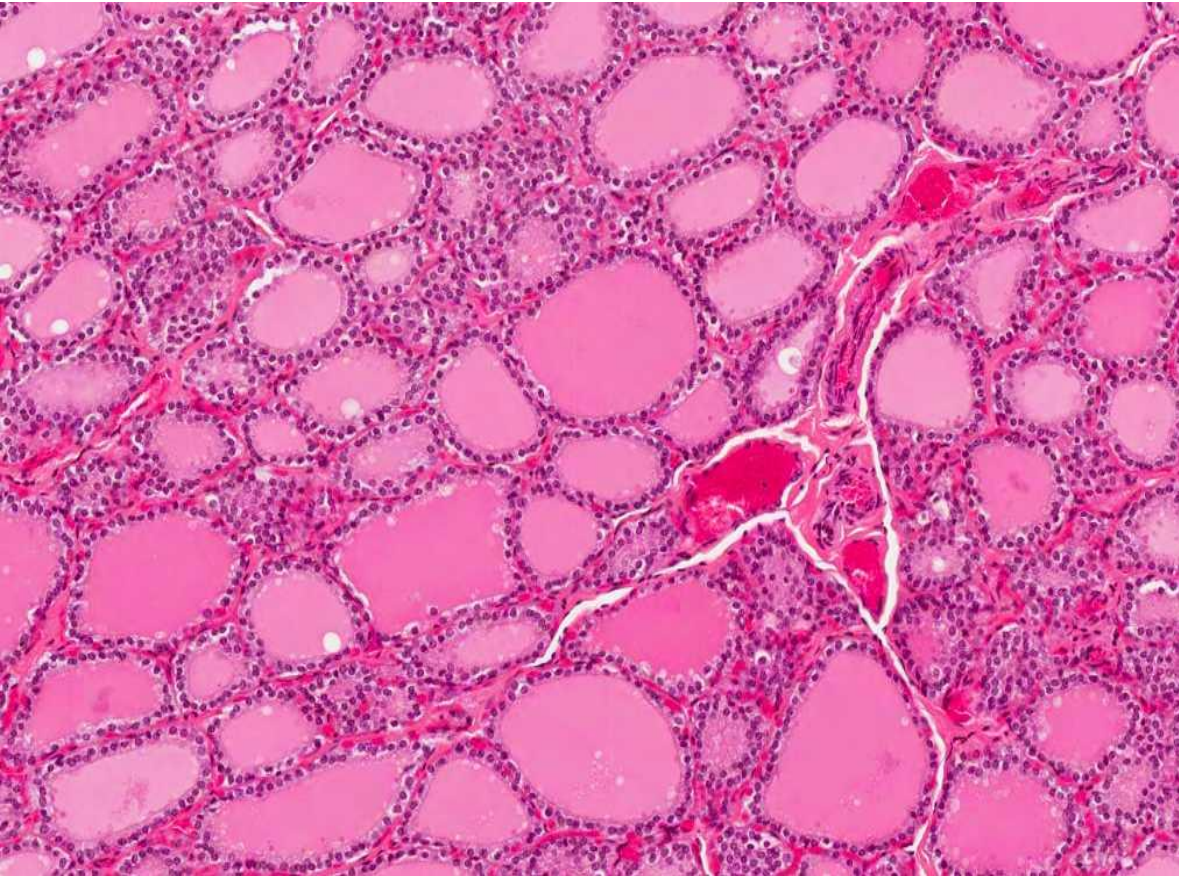
Abeer Al-Suwailem

Nouf Aboalsamh

The important things to know:

- 1- Identify the section
- 2- Identifying features
- 3-Enumerate the cell types

Thyroid Gland



Identifying features:

Thyroid follicles

Or

1-Acidophilic colloid

2-Simple cuboidal epithelium.

3-Follicular cells

4-Parafollicular cells

Enumerate the cells:

1- Follicular cells

2-Parafollicular cells

Thyroid Gland high magnification

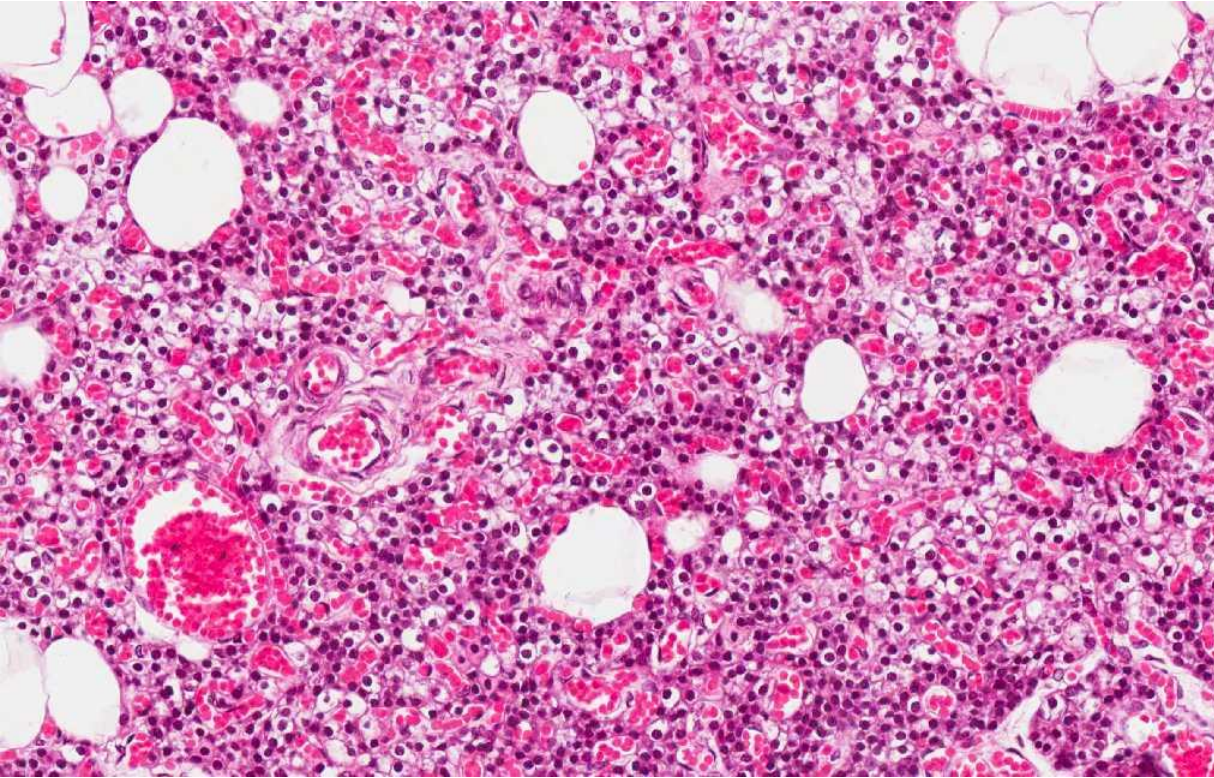


1-Thyroid follicle

2-Colloid (Acidophilic)

3-Parafollicular cells

Parathyroid Gland



Identifying features:

- 1-Chief cell (cuboidal in shape)
- 2-Oxyphil cell (cuboidal in shape)
- 3- fenestrated blood capillaries
- 4- fat cells

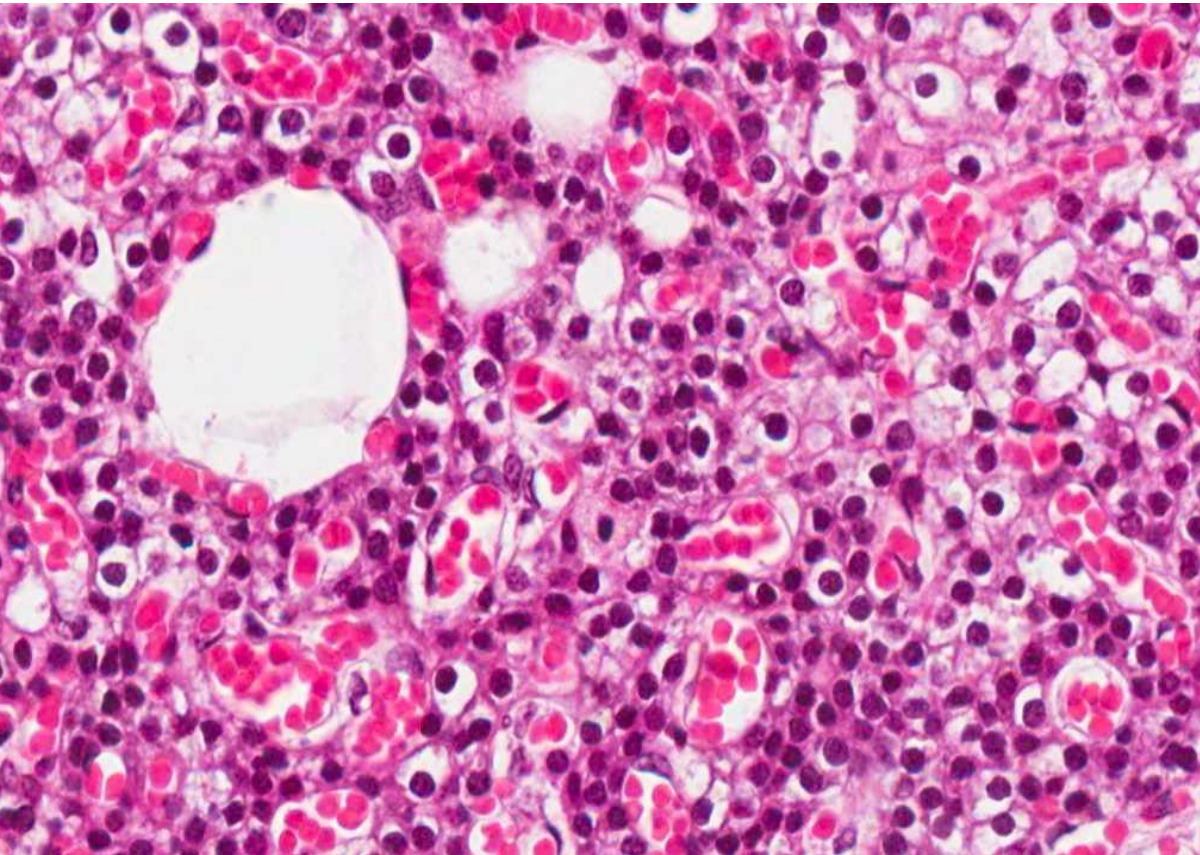
Enumerate the cells

- 1-Chief cells
- 2-Oxyphil cells

- fat cells are not basic component of parathyroid gland, they indicate aging of the gland.

Parathyroid Gland high magnification

Same as the previous slide



Identifying features:

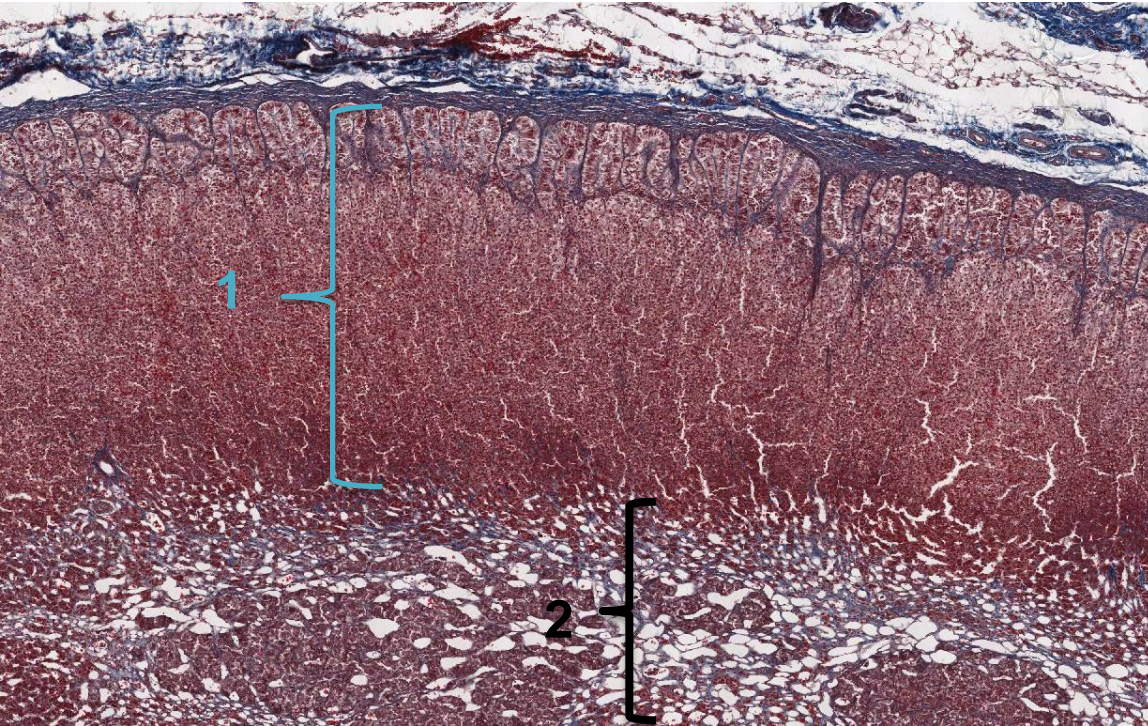
- 1-Chief cell (cuboidal in shape)
- 2-Oxyphil cell (cuboidal in shape)
- 3- fenestrated blood capillaries
- 4- fat cells

Enumerate the cells

- 1-Chief cells
- 2-Oxyphil cells

- fat cells are not basic component of parathyroid gland, they indicate aging of the gland.

Adrenal Gland



Identifying features:

- 1-Zona glomerulosa
- 2-Zona fasciculata
- 3-Zona reticularis
- 4-Adrenal medulla

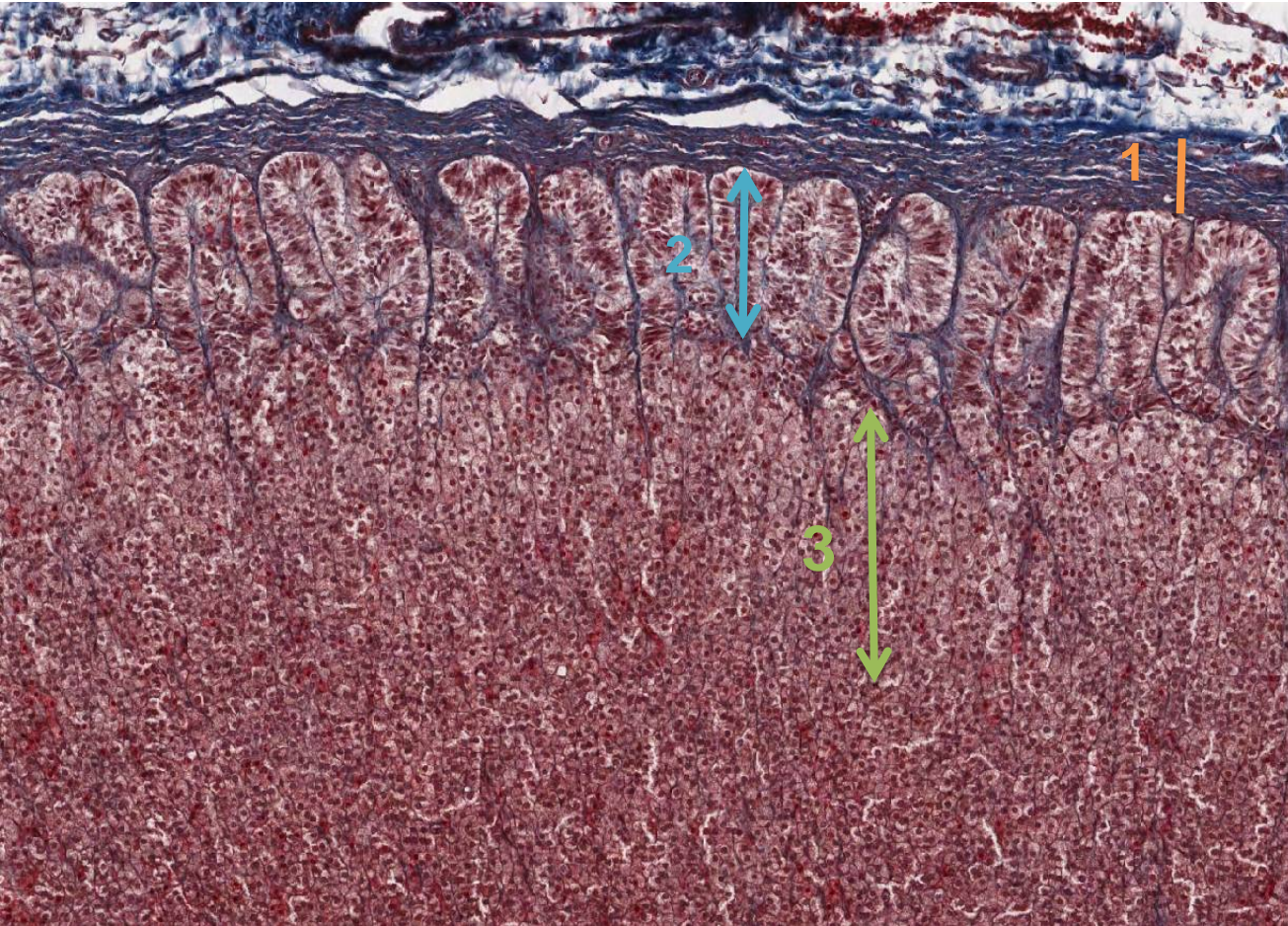
Enumerate the cells:

- 1-Spongiocyte in zona fasciculata (Arranged in columns)
- 2-Zona glomerulosa
- 3-Zona reticularis (Polygonal cells)

1-Adrenal cortex

2-Adrenal medulla

Adrenal Gland high magnification



1- Capsule

2- Zona glomerulosa

3- Zona fasciculata