



Tamader Aloofy

## Leaders

Mohammed Aldaheri

## Members

Ibtihal Al-Amer

Nasser Alsaleh

Raghda Al Amri

Walaa Al Shehri

Abeer Al-Suwailem

Nouf Aboalsamh

IMPORTANT THINGS TO KNOW :

1- IDENTIFY THE SECTION

2-IDENTIFIY THE STRUCTURE (LABELED)

3-LINING EPITHELIUM ( IF PRESENT )

4-FEATURES





Features:  
1-Seminiferous tubules  
2- Interstitial cells of Leydig.

Seminiferous tubule ○  
Interstitial cell of leydig ★

Testis





Features:

-Seminiferous tubule: Each tubule is lined with a stratified epithelium called seminiferous epithelium which is formed of 2 type of cells:

1- Sertoli cells

2- Spermatogenic cells

-Interstitial cells of leydig

Cytoplasm: acidophilic & vacuolated.

Seminiferous tubule (high magnification)





Lining epithelium : Pseudostratified columnar epithelium with stereocilia .

Features :

1-Loose C.T

2-Pseudostratified columnar epithelium with stereocilia

3- Layer of circularly-arranged smooth muscle cells.

Epididymis





Lining epithelium : Pseudostratified columnar epithelium with stereocilia .

Features :

1-Lumen is filled with sperms ☆

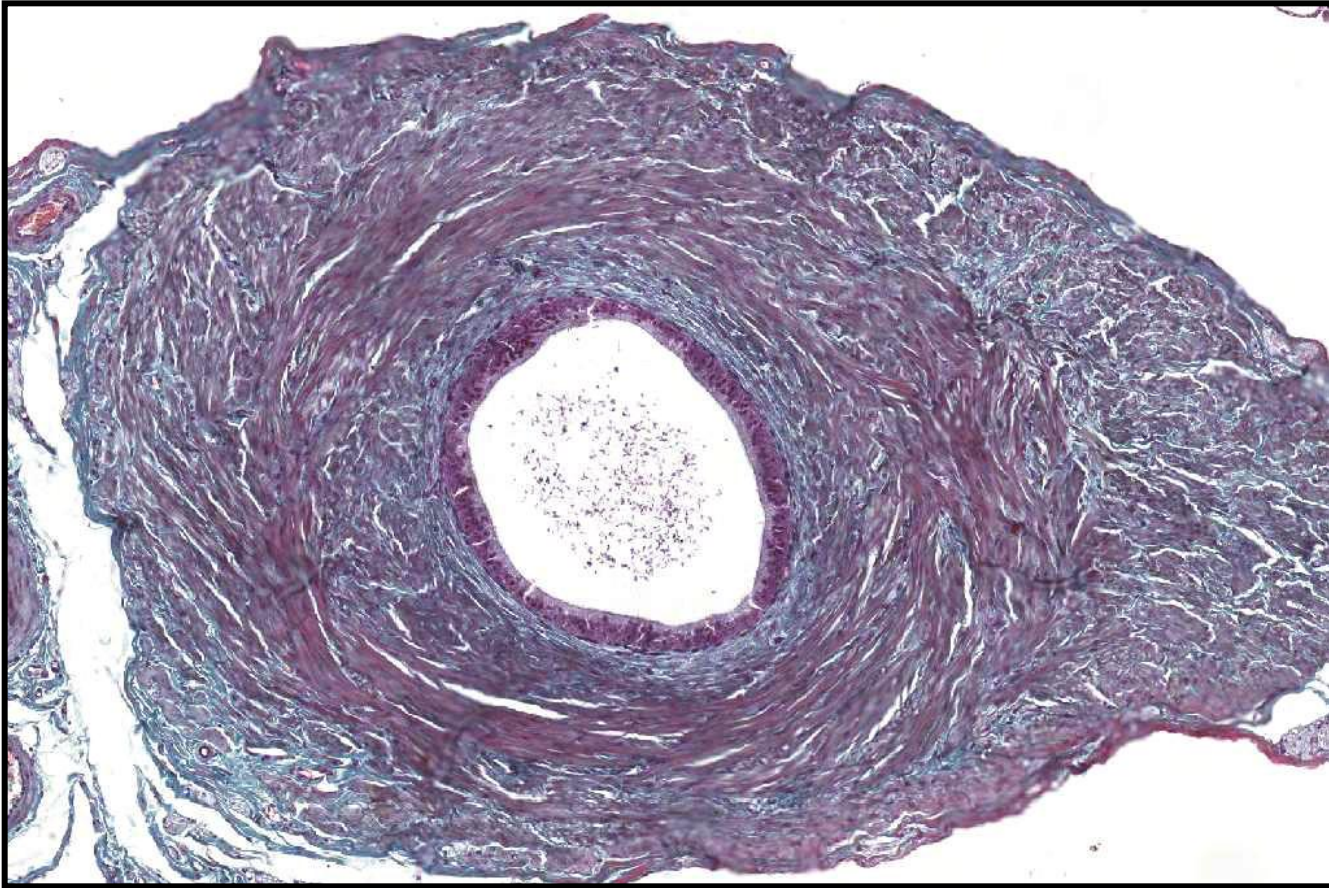
2-Loose C.T

3- Pseudostratified columnar epithelium with stereocilia .

4- Layer of circularly-arranged smooth muscle cells.

**Epididymis** (high magnification)



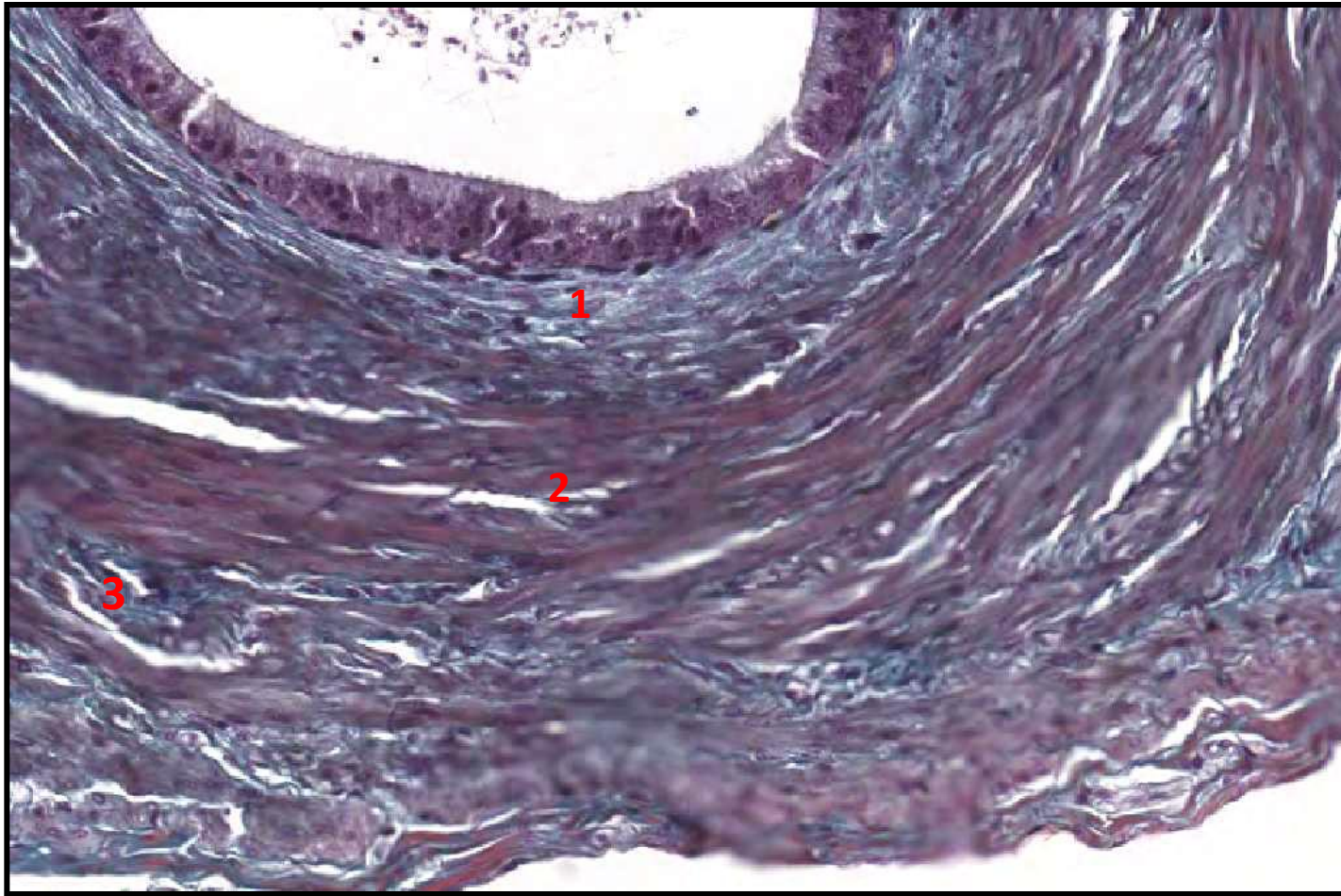


Lining epithelium :  
Pseudostratified columnar  
epithelium with stereocilia .

Features :

Muscle coat (3 thick layers) :  
1-Inner longitudinal  
2-Middle circular  
3-Outer longitudinal

Vas deferens



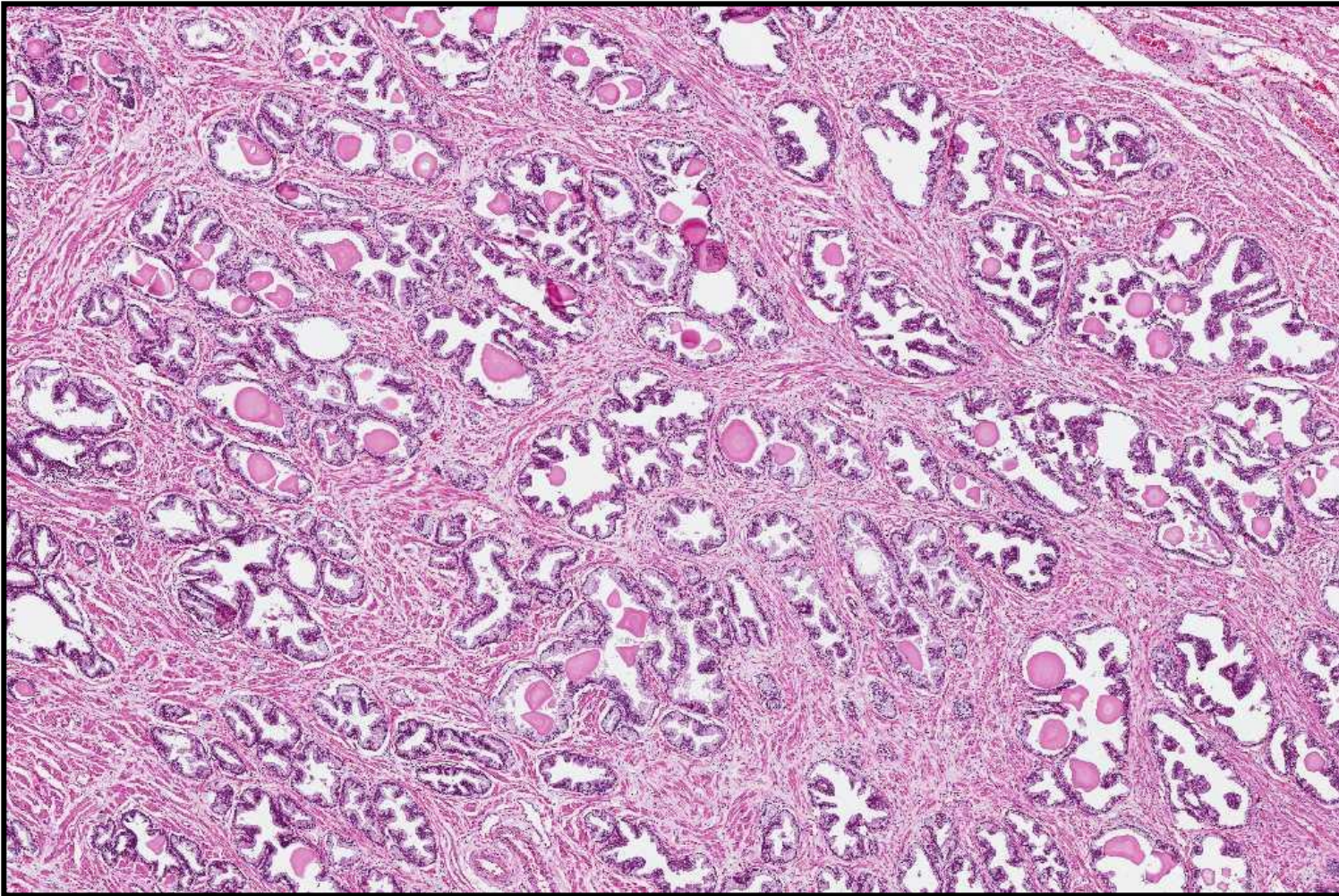
Lining epithelium :  
Pseudostratified columnar  
epithelium with stereocilia .

Features :

Muscle coat (3 thick layers) :  
1-Inner longitudinal  
2-Middle circular  
3-Outer longitudinal

Vas deferens (high magnification)





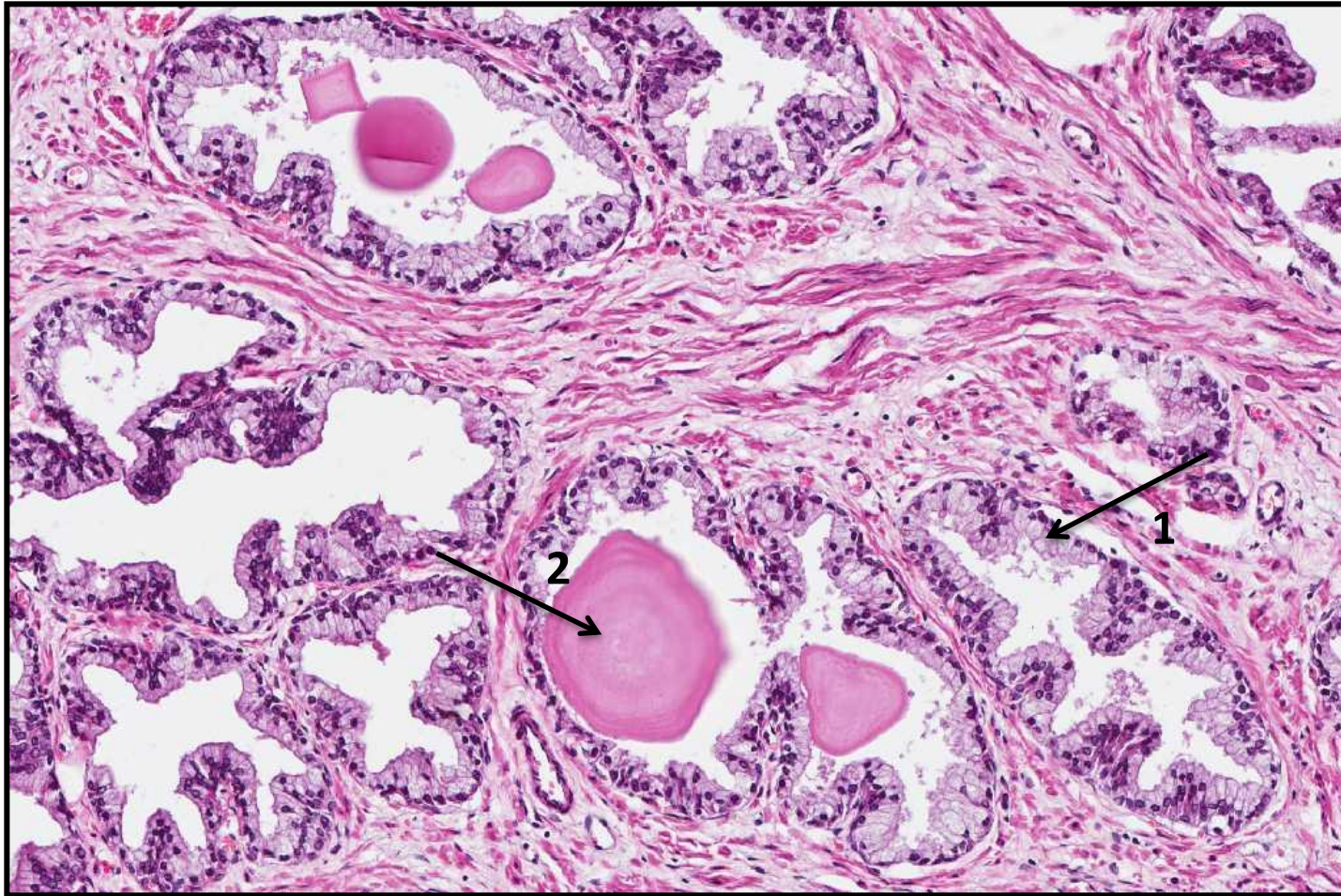
Prostate

Lining epithelium : simple Columnar epithelium . or Pseudostratified Columnar Epithelium (Both are true)

Features :

- 1- Prostatic acini
- 2- prostatic concretions (corpora amylacea).
- 3- Connective tissue containing smooth muscle fibers.





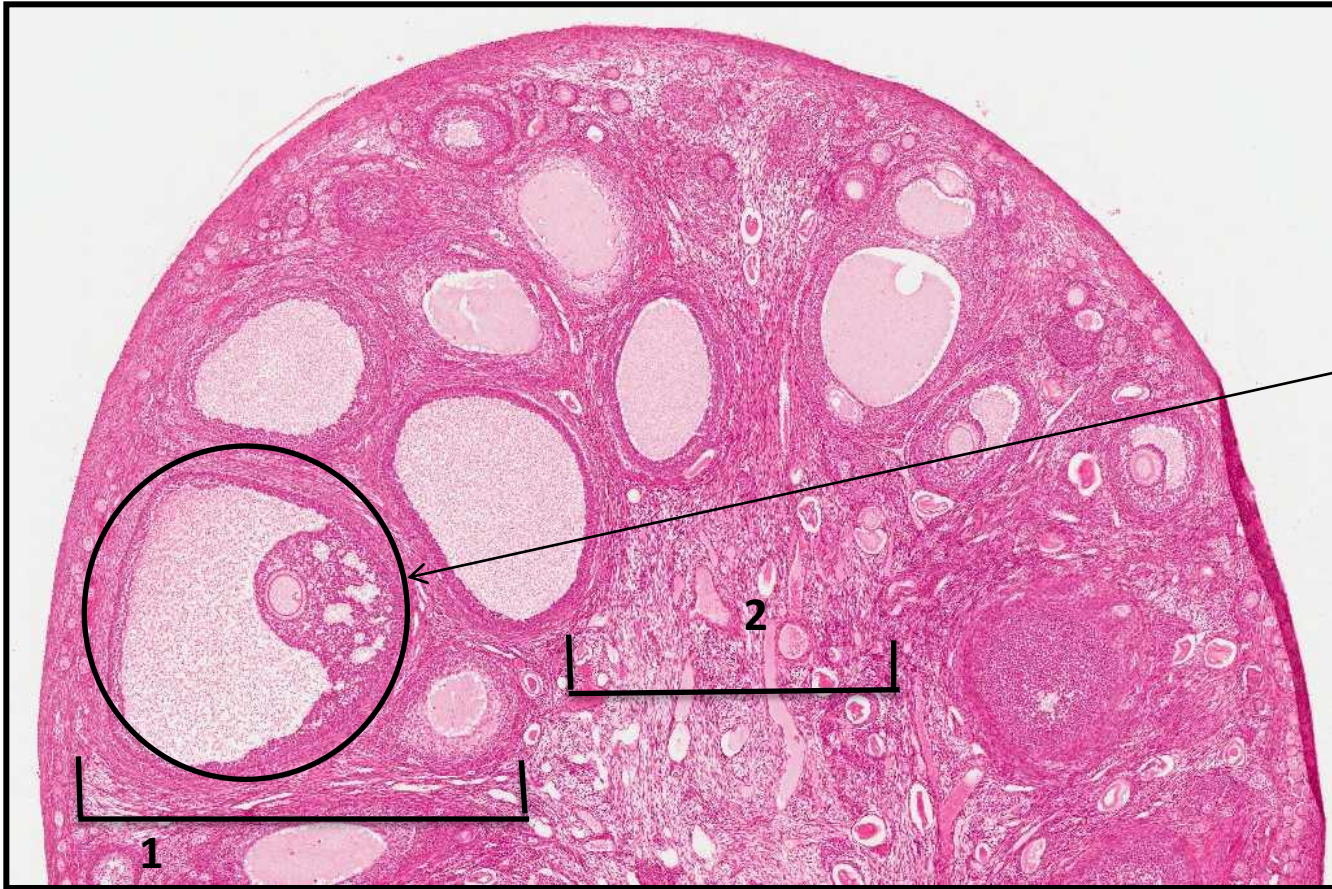
Lining epithelium : simple Columnar epithelium . or Pseudostratified Columnar Epithelium.

Features :

- 1- Prostatic acini
- 2- prostatic concretions (corpora amylacea).
- 3- Connective tissue containing smooth muscle fibers.

Prostate (high magnification)





Features :

1-Cortex

2-Medulla

3-Mature graafian follicle

4-Primary follicle

5-Secondary follicle

Ovary





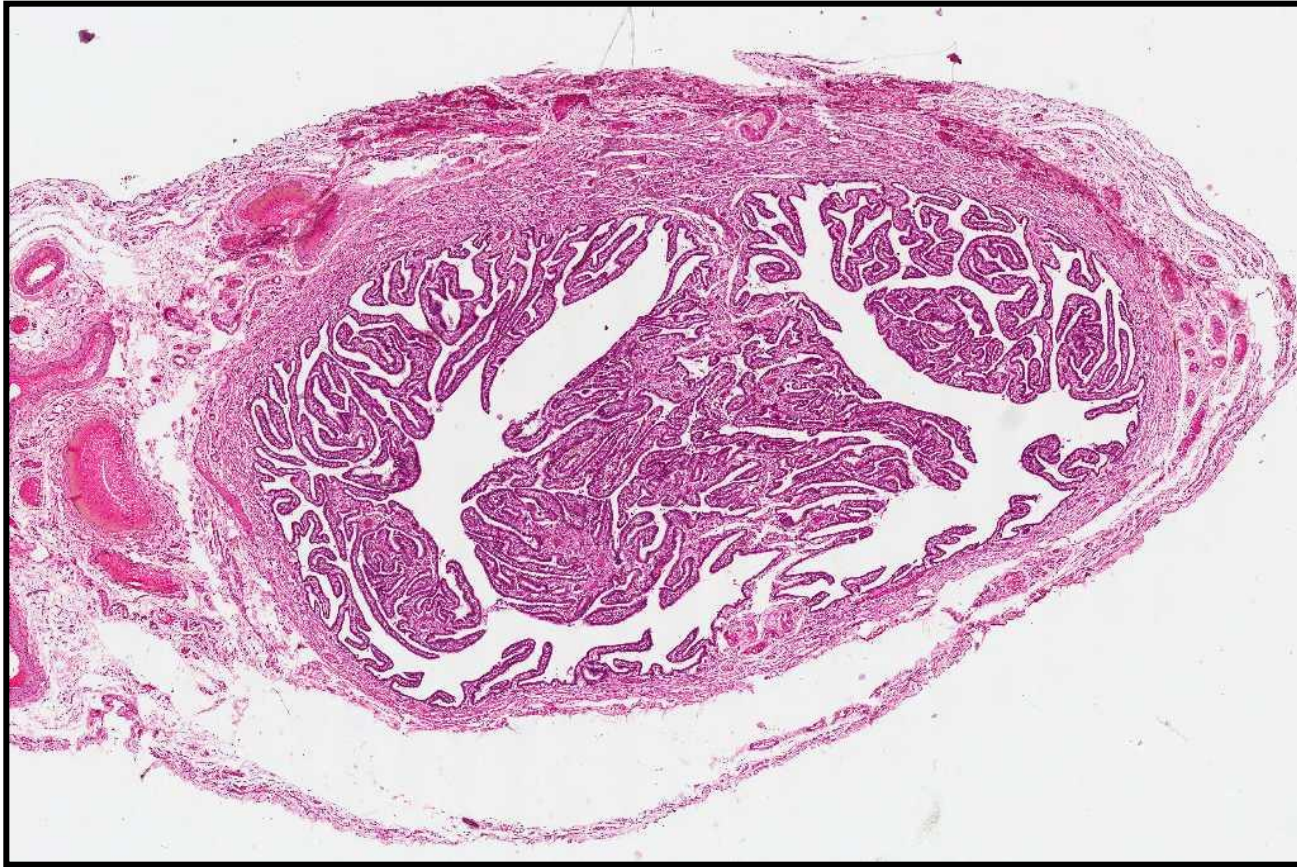
Mature graafian  
(ovarian) follicle

Features :

- Zona pellucida  
(acidophilic structure)
- Corona radiata
- Granulosa cells

Mature graafian follicle  
(high magnification)





Lining epithelium :Simple columnar partially ciliated.

Features :

-Highly folded mucosa

-2 Muscle layer

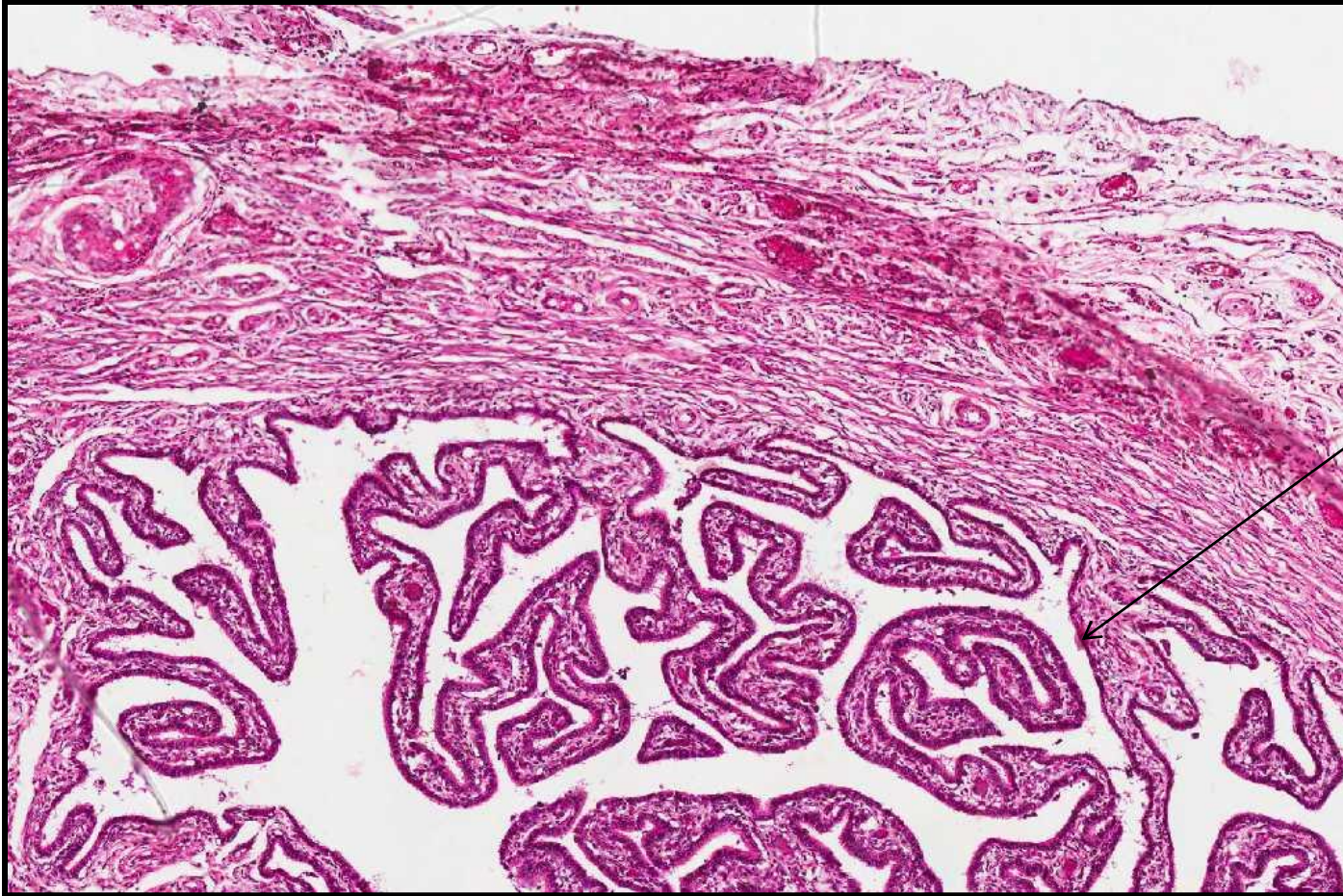
    Inner circular.

    Outer longitudinal.

-Serosa

Fallopian tube





Lining epithelium :Simple columnar partially ciliated.

Features :

-Highly folded mucosa

-2 Muscle layer

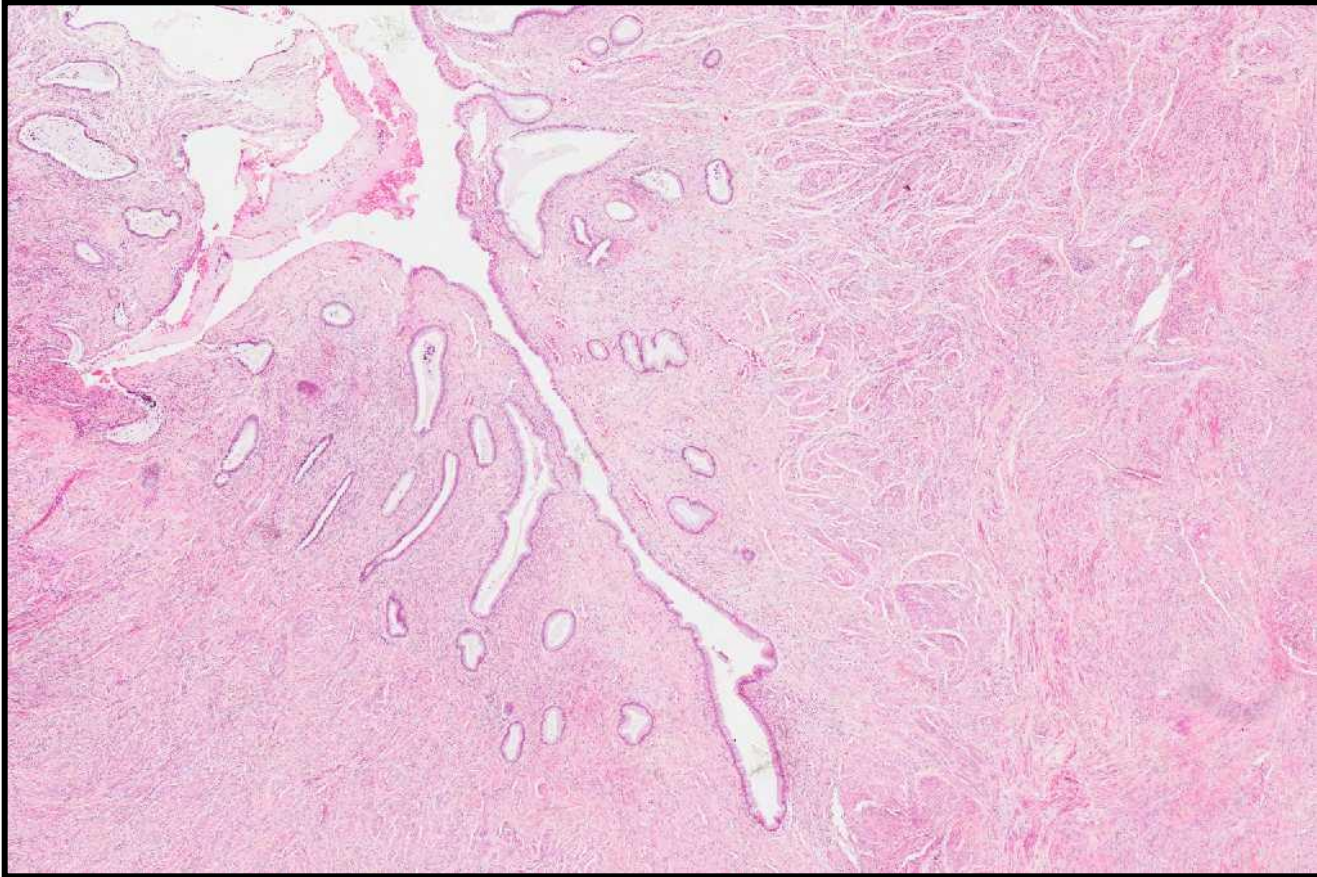
    Inner circular.

    Outer longitudinal.

-Serosa

Fallopion tube (high  
magnification)



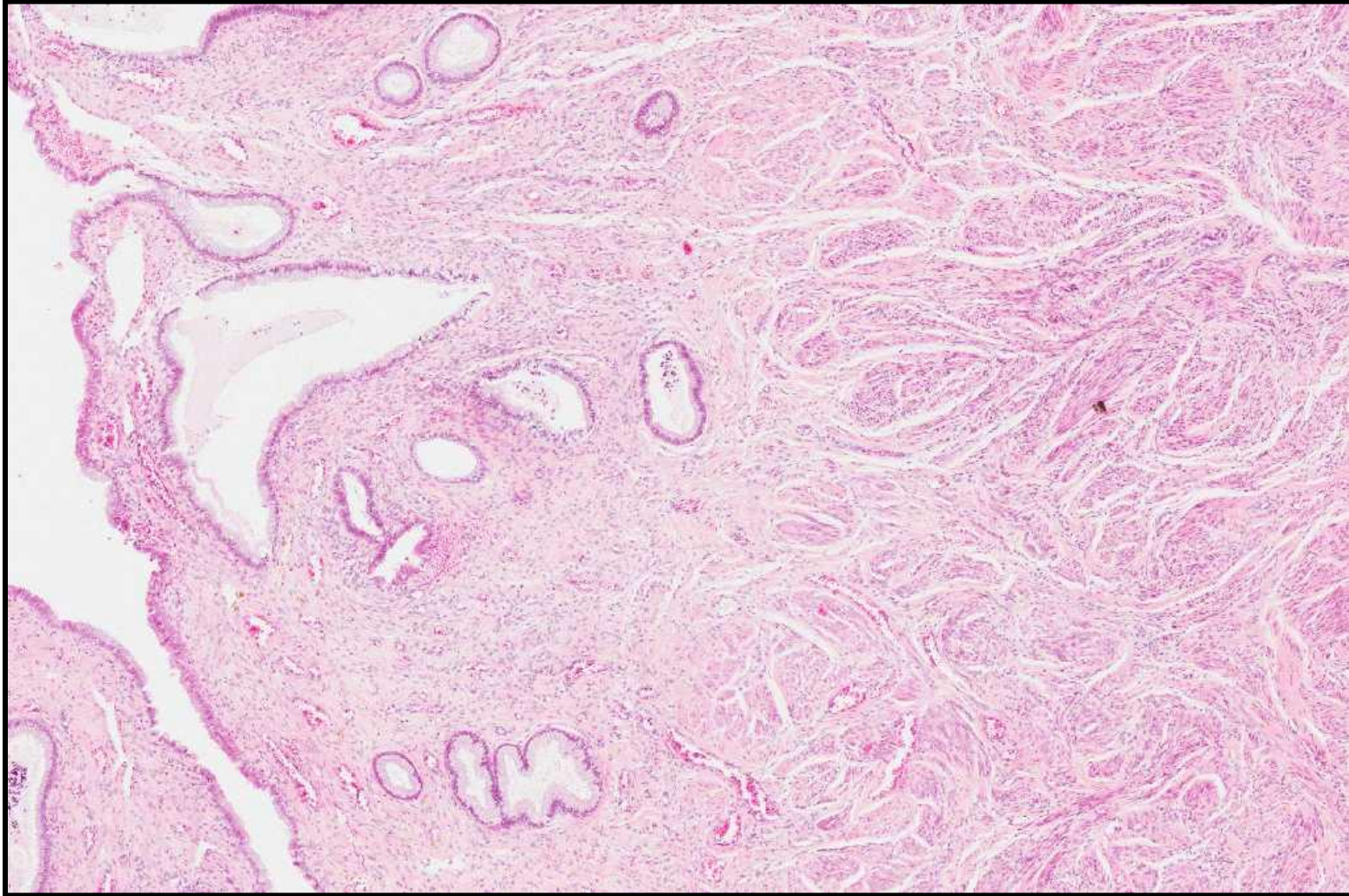


Lining epithelium : Simple columnar partially ciliated.

Feature :  
Endometrial gland

Uterus





Lining epithelium : Simple columnar partially ciliated.

Feature :  
Endometrial gland

**Uterus** (high magnification)





Features :

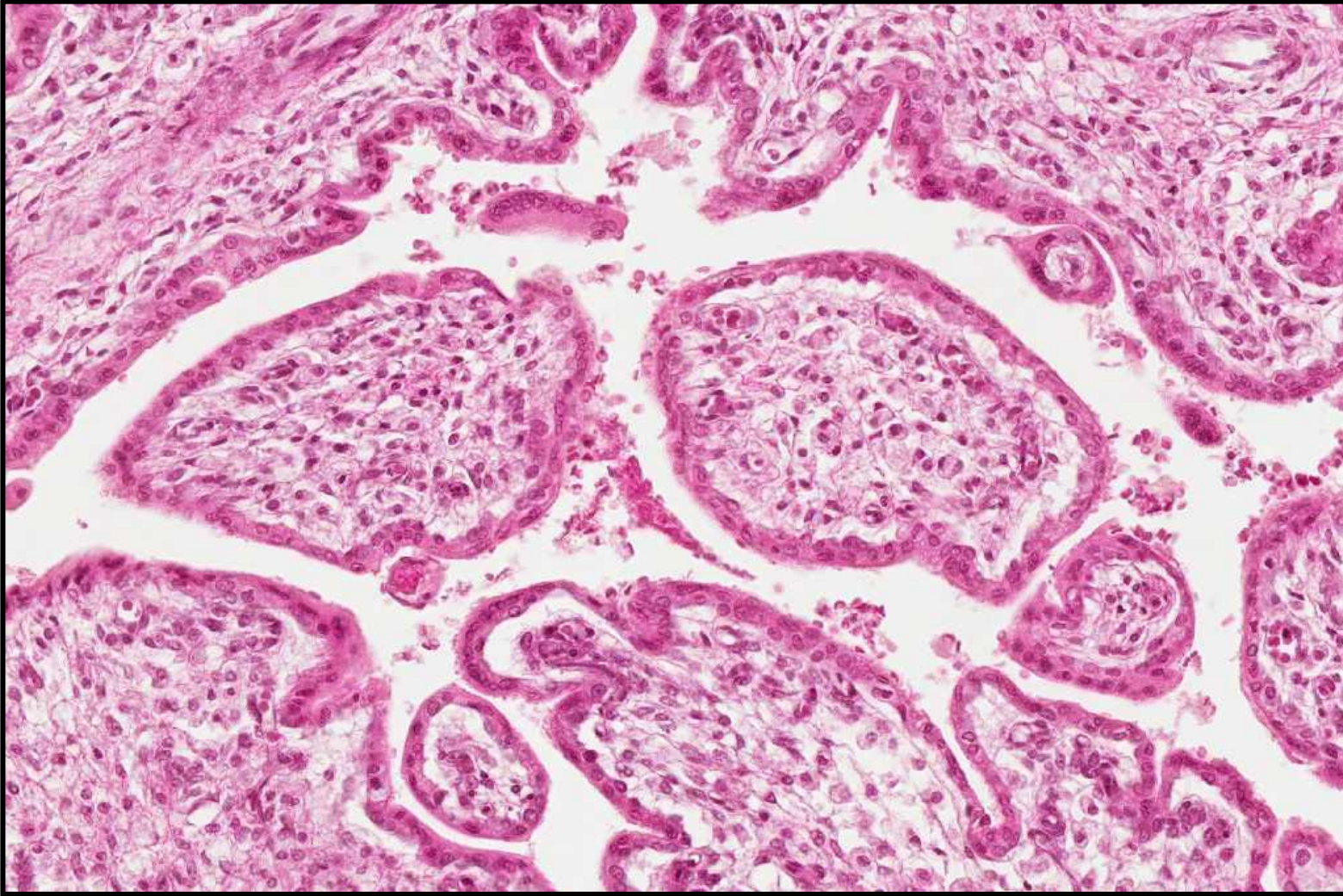
➤ Chorionic villus (plural=Villi) and it is formed of:

- 1-Embryonic connective tissue containing fetal blood capillaries
- 2- syncytiotrophoblast

Syncytiotrophoblast is present in the early and late pregnancy unlike the cytotrophoblast which is present in the early pregnancy, but disappears in the late pregnancy. (430 team)

Placenta





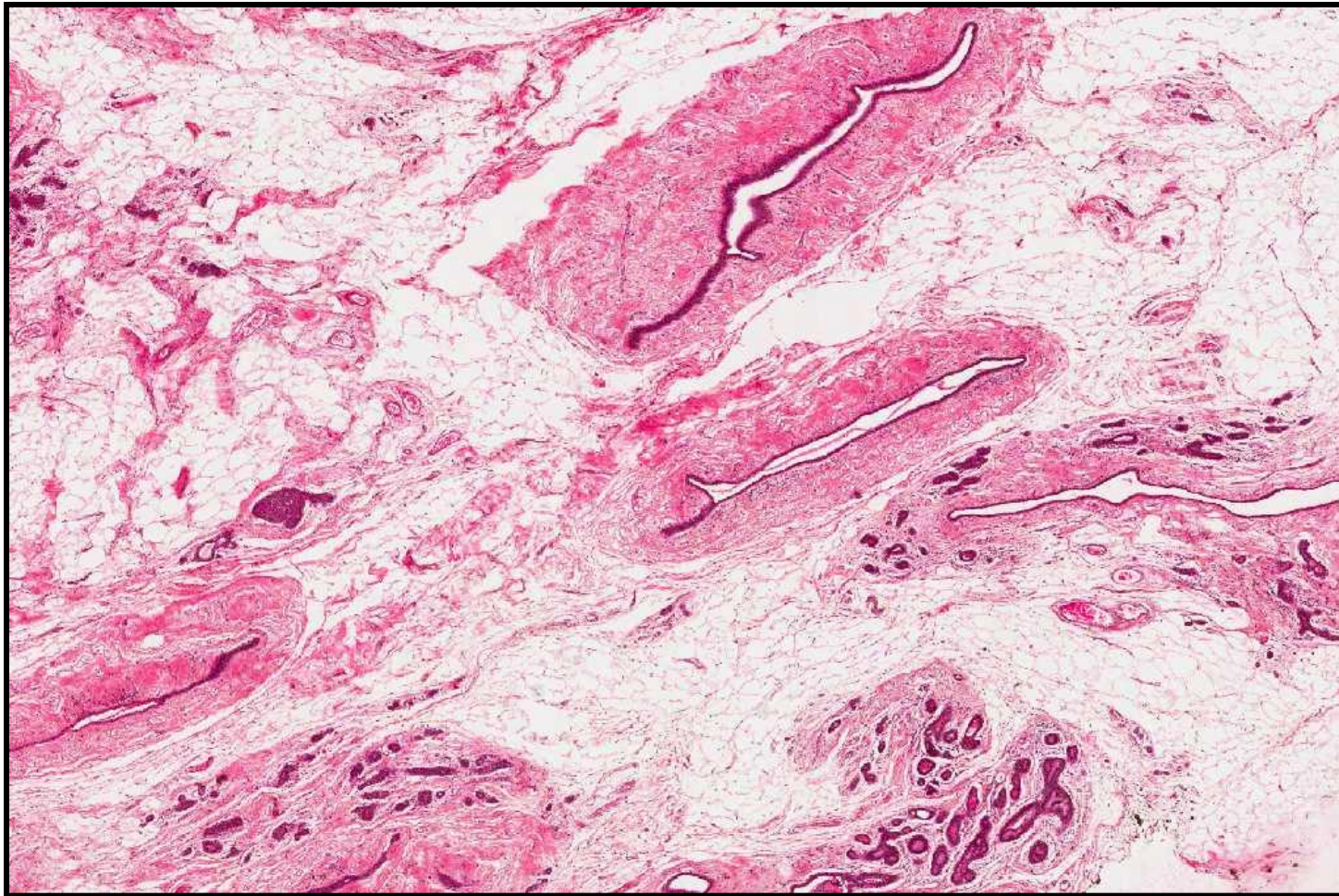
Features :

Chorionic villus (plural=Villi) and it is formed of:

- 1-Embryonic connective tissue containing fetal blood capillaries
- 2- syncytiotrophoblast

**Chorionic villi** (high magnification)





**Features :**

Small lobules and each lobule is formed of few ducts with intralobular connective tissue

Wide interlobular connective tissue (septa) between lobules

Resting (Non-Lactating) Mammary Gland





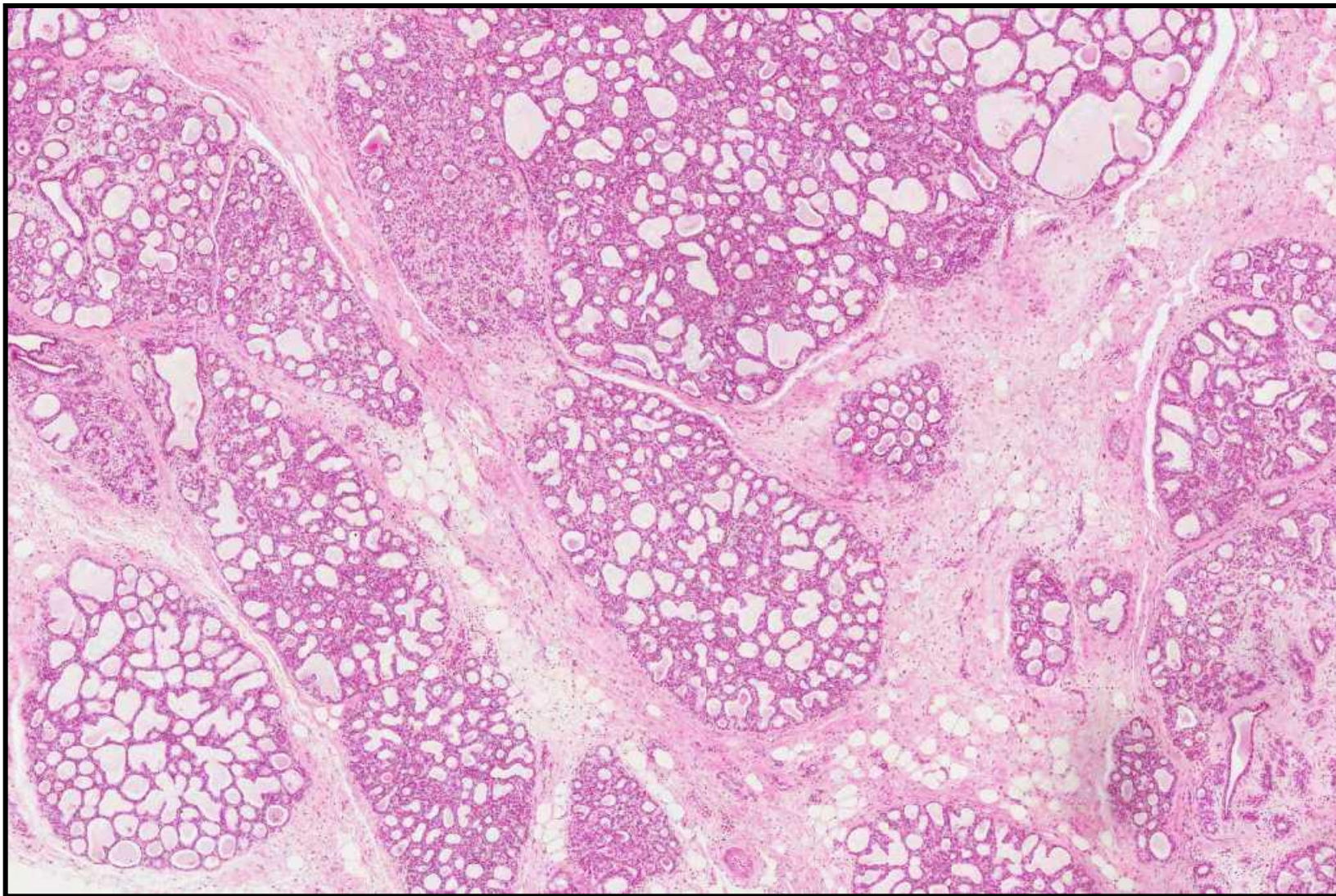
**Features :**

Small lobules and each lobule is formed of few ducts with intralobular connective tissue

Wide interlobular connective tissue (septa) between lobules

**Resting (Non-Lactating) Mammary Gland** (high magnification)





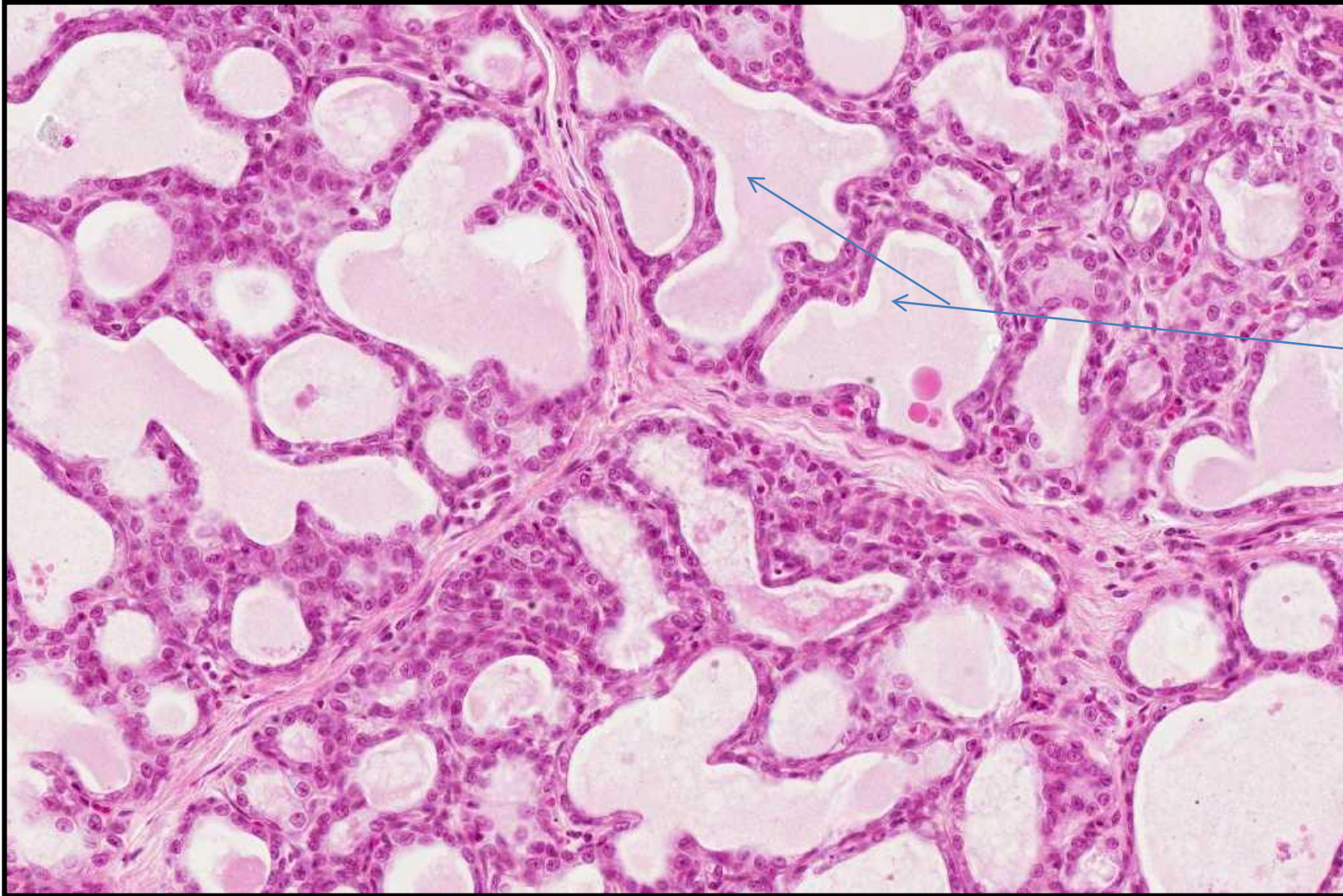
Features :

Lobules formed of ducts and acini

Narrow interlobular connective tissue (septa) between lobules

Lactating Mammary Gland

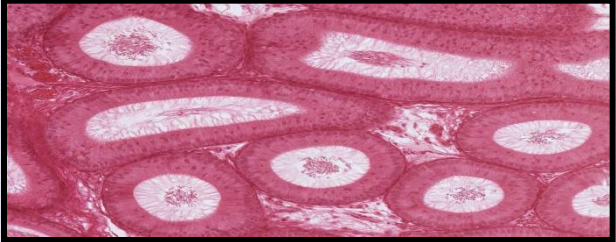
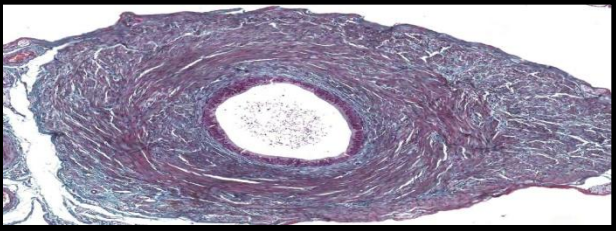
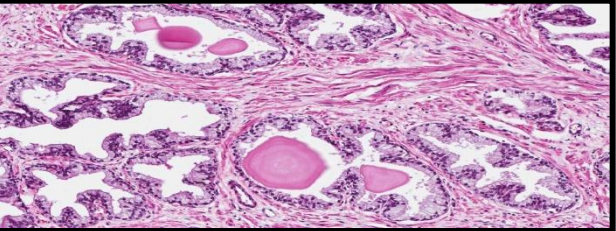
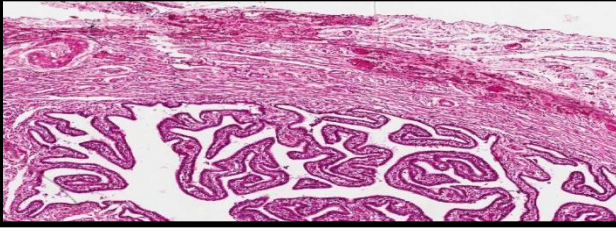
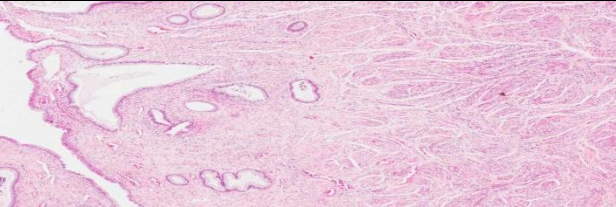




- Features :
- Lobules formed of ducts and acini
  - Narrow interlobular connective tissue (septa) between lobules
  - Acini containing milk

Lactating Mammary Gland (High magnification)



The section	The organ	Lining epithelium
	Epididymis (high magnification)	Pseudostratified columnar epithelium with stereocilia
	Vas deferens (high magnification)	Pseudostratified columnar epithelium with stereocilia
	Prostate (high magnification)	Simple Columnar epithelium . or Pseudostratified Columnar Epithelium
	Fallopian tube (high magnification)	Simple columnar partially ciliated.
	Uterus (high magnification)	Simple columnar partially ciliated