



HISTOLOGY PRACTICAL REVISION

CNS BLOCK



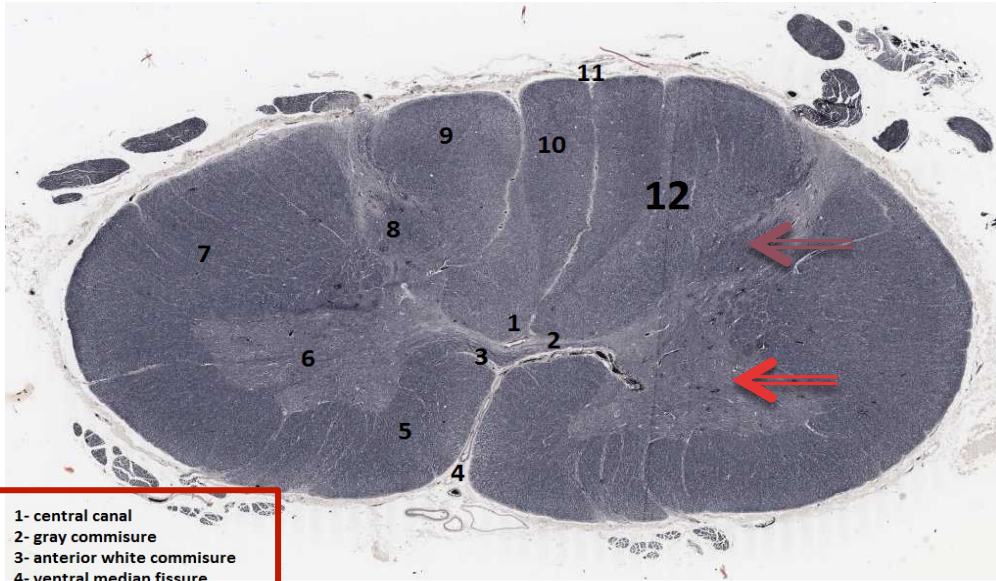
One station in exam as the doctor
said.



@Histo433

Histology.team@gmail.com

Identify these structures : “Cervical SC”



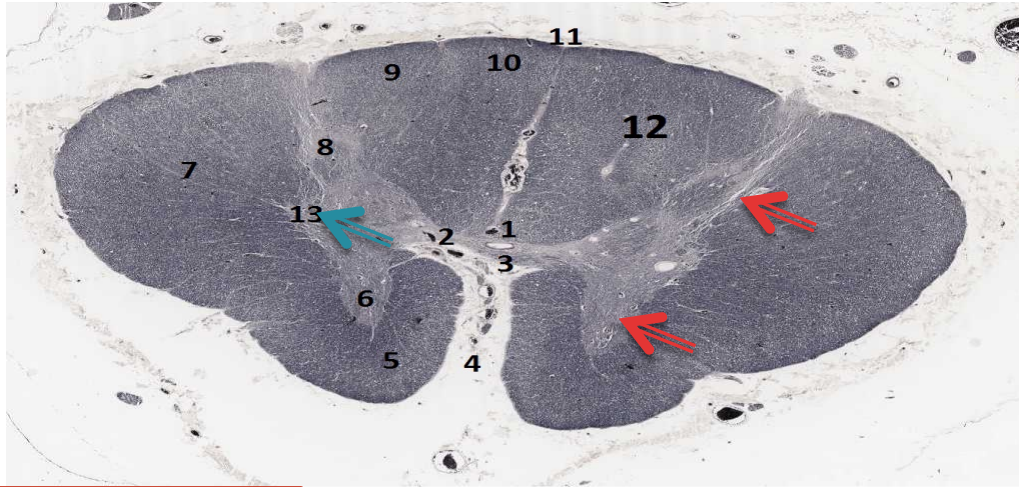
- 1- central canal
- 2- gray commissure
- 3- anterior white commissure
- 4- ventral median fissure
- 5- anterior white column
- 6- anterior gray horn
- 7- lateral white column
- 8- posterior gray horn
- 9- cuneate tract
- 10- gracile tract
- 11- dorsal median sulcus
- 12- posterior white column

Cervical Spinal Cord

We can say it is cervical segment because :

- ✓ Oval in shape segment
- 1-wide ventral horn .**
- 2-narrowed dorsal horn .**

Identify these structures : “ Thoracic SC”



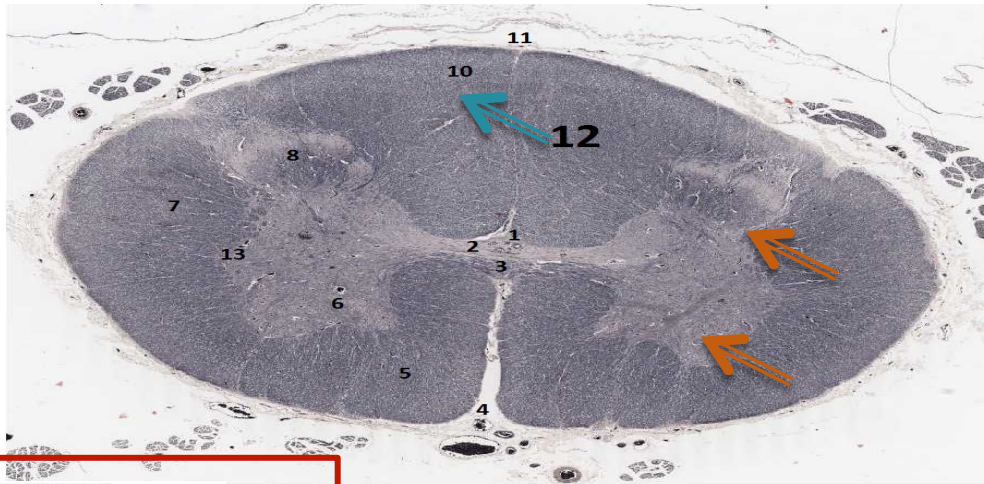
Thoracic Spinal Cord

- 1- central canal
- 2- gray commissure
- 3- anterior white commissure
- 4- ventral median fissure
- 5- anterior white column
- 6- anterior gray horn
- 7- lateral white column
- 8- posterior gray horn
- 9- cuneate tract
- 10- gracile tract
- 11- dorsal median sulcus
- 12- posterior white column
- 13- lateral gray horn

We can say it is thoracic segment because :

- All (ventral & dorsal) horn are Thin
- It has a lateral gray horn

Identify these structures : “ lumbar SC”

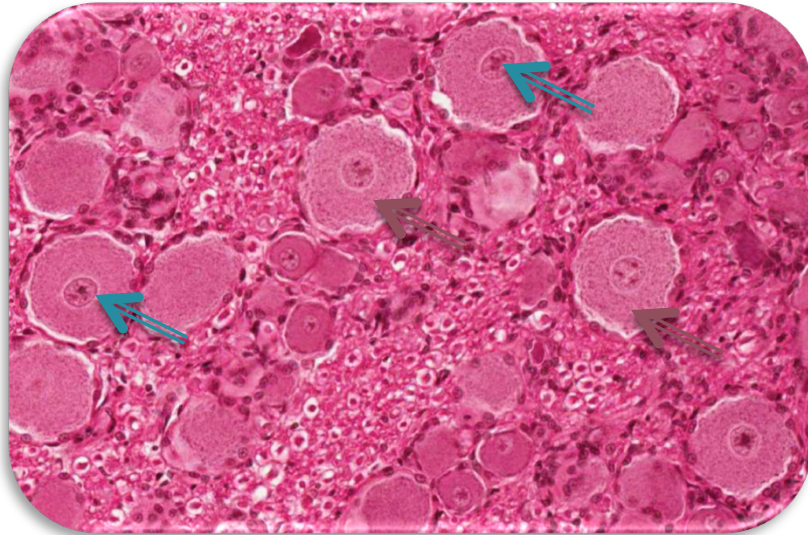


- 1- central canal
- 2- gray commissure
- 3- anterior white commissure
- 4- ventral median fissure
- 5- anterior white column
- 6- anterior gray horn
- 7- lateral white column
- 8- posterior gray horn
- 9- cuneate tract "not found at this level"
- 10- gracile tract
- 11- dorsal median sulcus
- 12- posterior white column
- 13- lateral gray horn

Lumbar Spinal Cord

- We can say it is lumbar segment because :
- All (ventral & dorsal) horn are WIDE
- There isn't Cuneate tract (only Gracile)

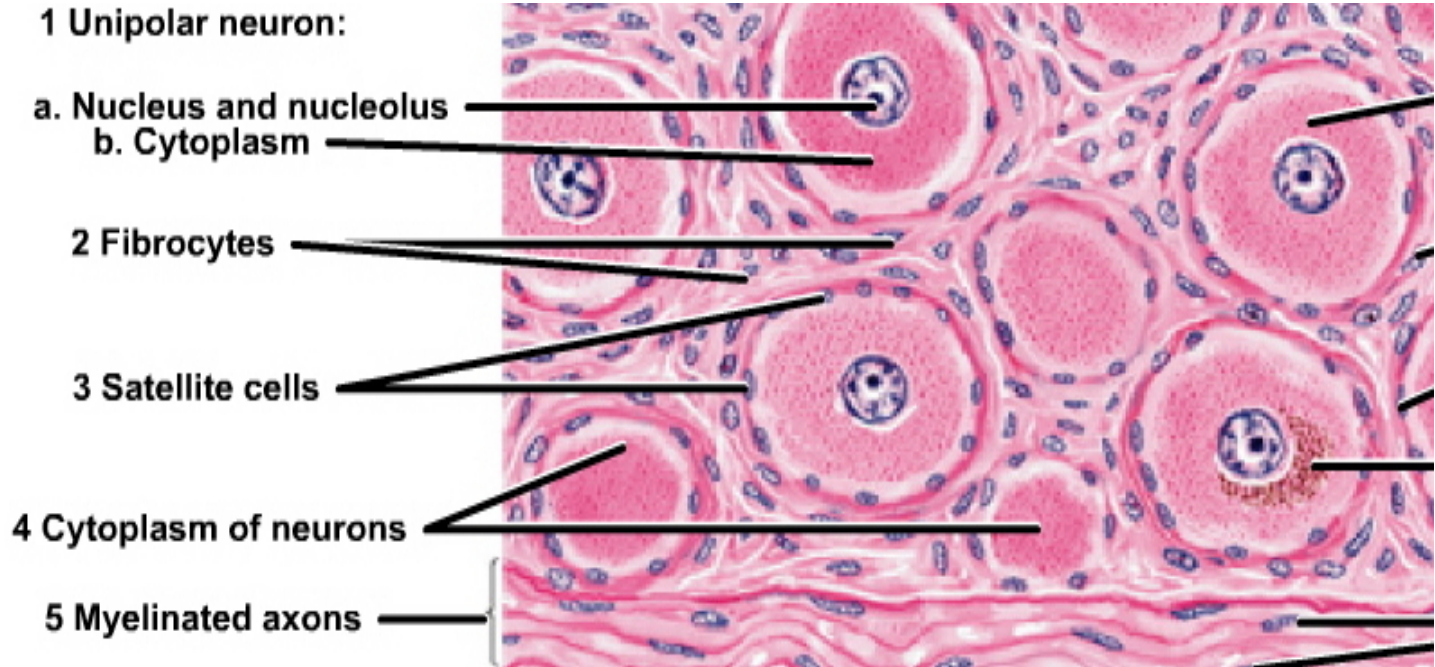
Unipolar neurons



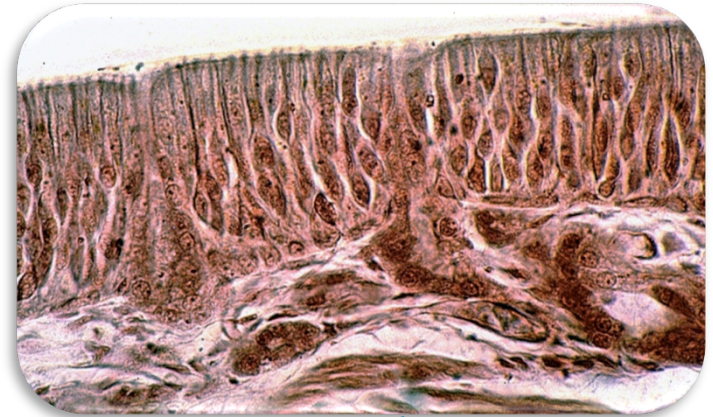
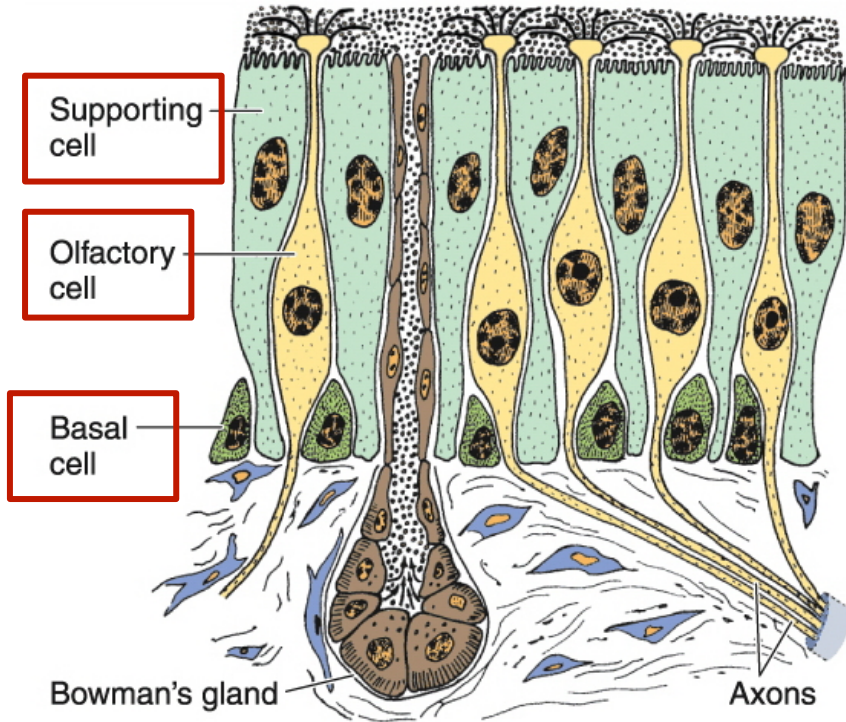
Unipolar neurons contain :
1-cell body of unipolar neuron.
2-nucleus .

Located in :
-spinal ganglion.

Unipolar neurons (in spinal ganglion) (diagram)



Bipolar neurons



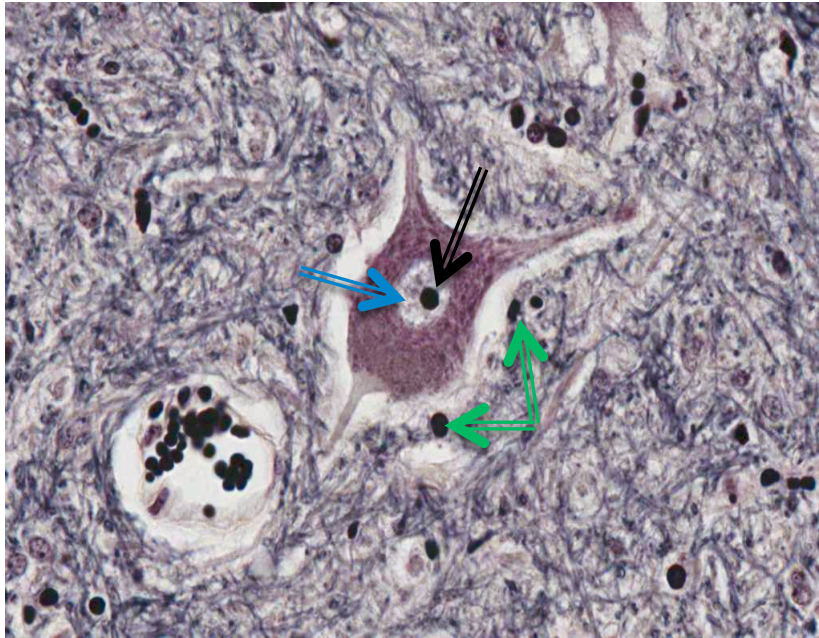
Bipolar neurons (in olfactory epithelium)

Bipolar neurons:

Located in :

- 1-olfactory epithelium.
- 2-retina .
- 3- vestibular cochlea .

Multipolar stellate neuron



Multipolar stellate neuron
(anterior horn cells of the spinal cord)

Multipolar stellate neuron:

Located in :

anterior horn cells of the spinal cord

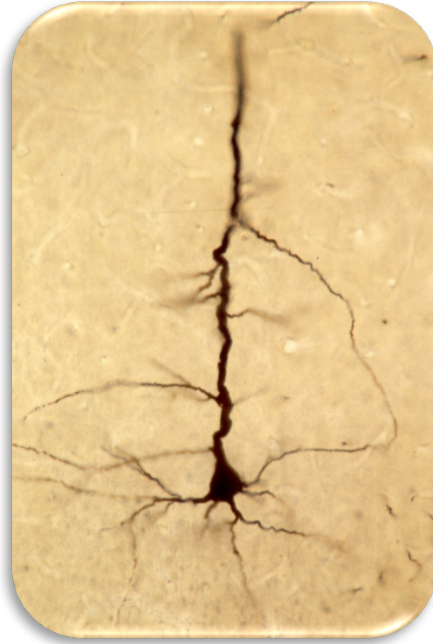
-Contain :

1-nucleus (surround the nucleolus) .

2- Nissl bodies .

3-nucleolus(in the center of nucleus) .

Multipolar pyramidal neuron

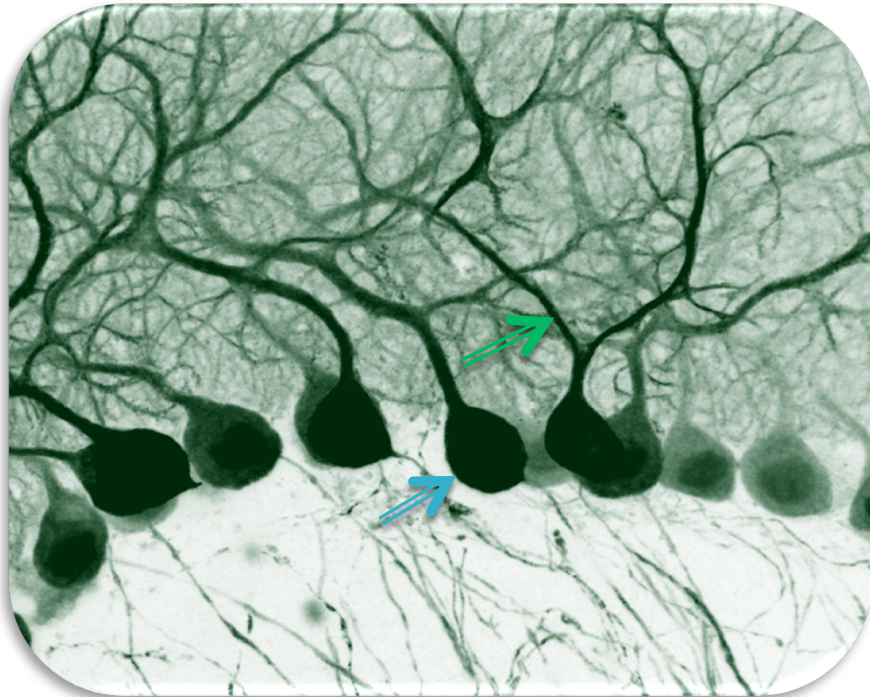


- Multipolar pyramidal neuron

Located in :

-cerebrum

Multipolar pyriform neurons



- Multipolar pyriform neurons

Located in :

- Purkinje cells of cerebellum

-Contain :

1- purkinje cell with nucleus & nucleolus .

2- dendrite of purkinje cell

Work Done By:

Ziyad alajlan.
Faris Alharbi.

