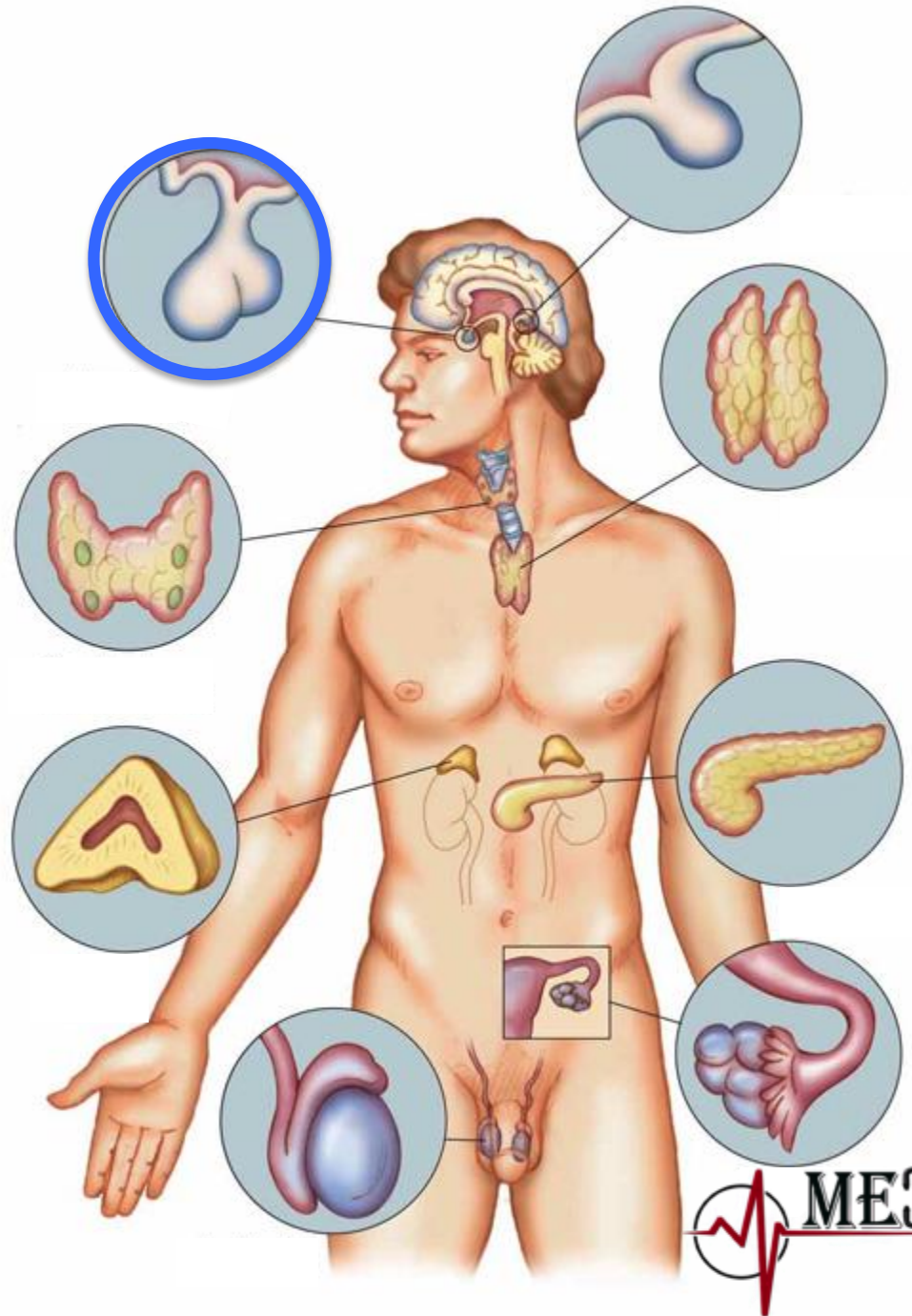
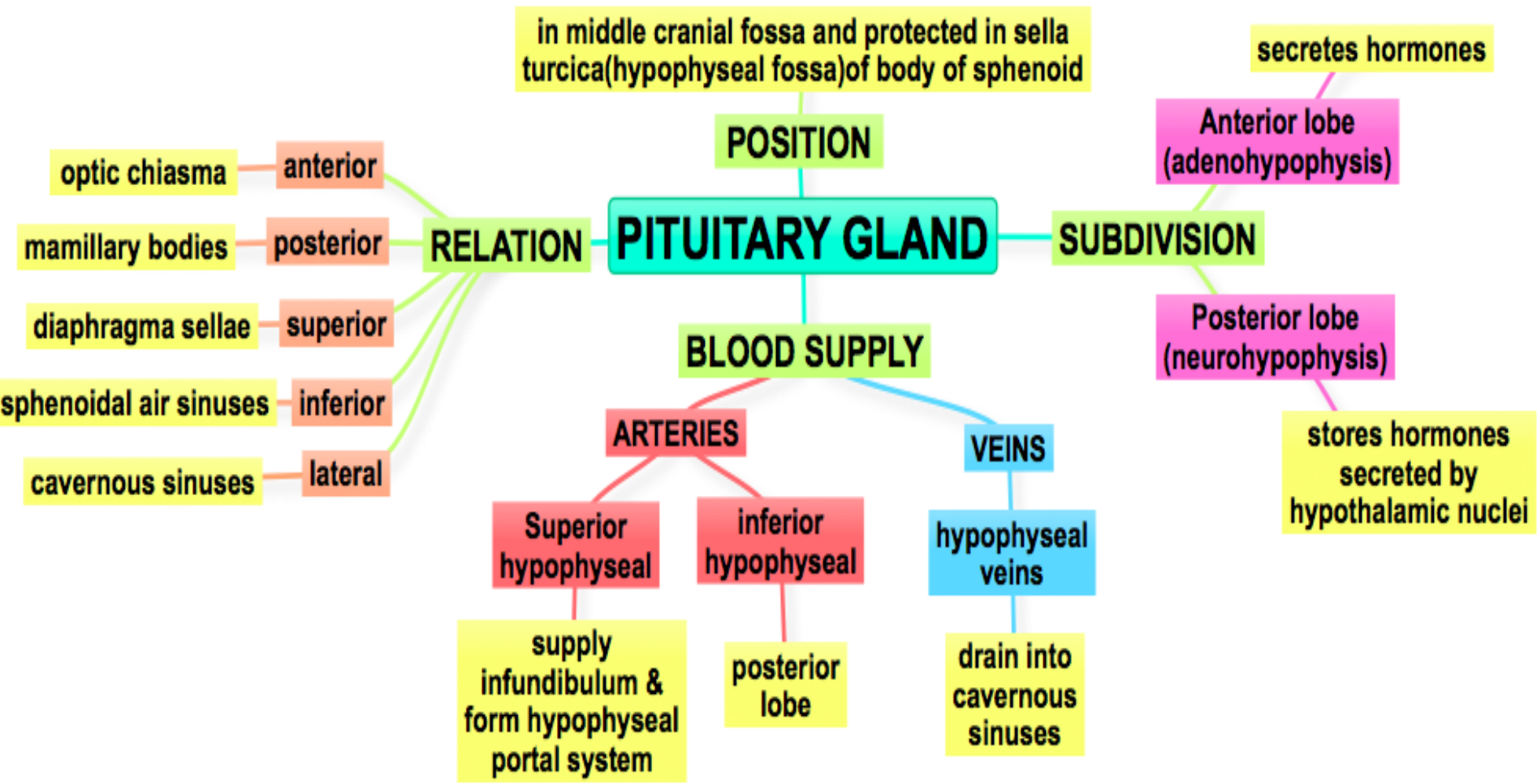


L1 PITUITARY GLAND

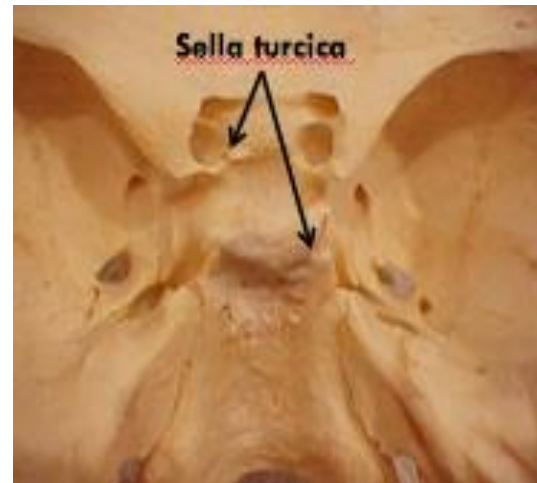
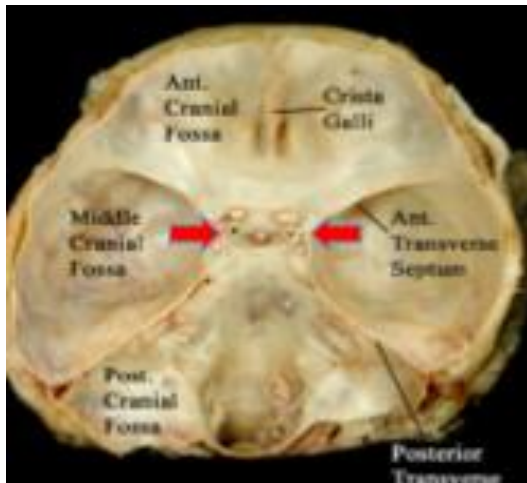


MIND MAP



PITUITARY GLAND (HYPOPHYSIS CEREBRI)

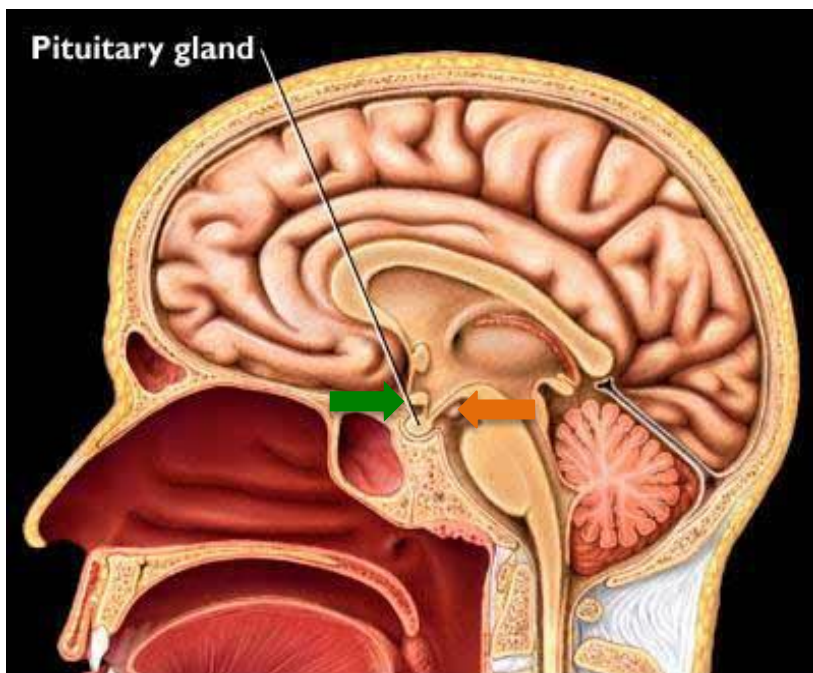
- It is a master gland of the endocrine system.
- It is a small oval structure 1 cm in diameter. But it doubles in its size during pregnancy.
- located in middle cranial fossa and protected in sella turcica* (hypophyseal fossa) of body of sphenoid.



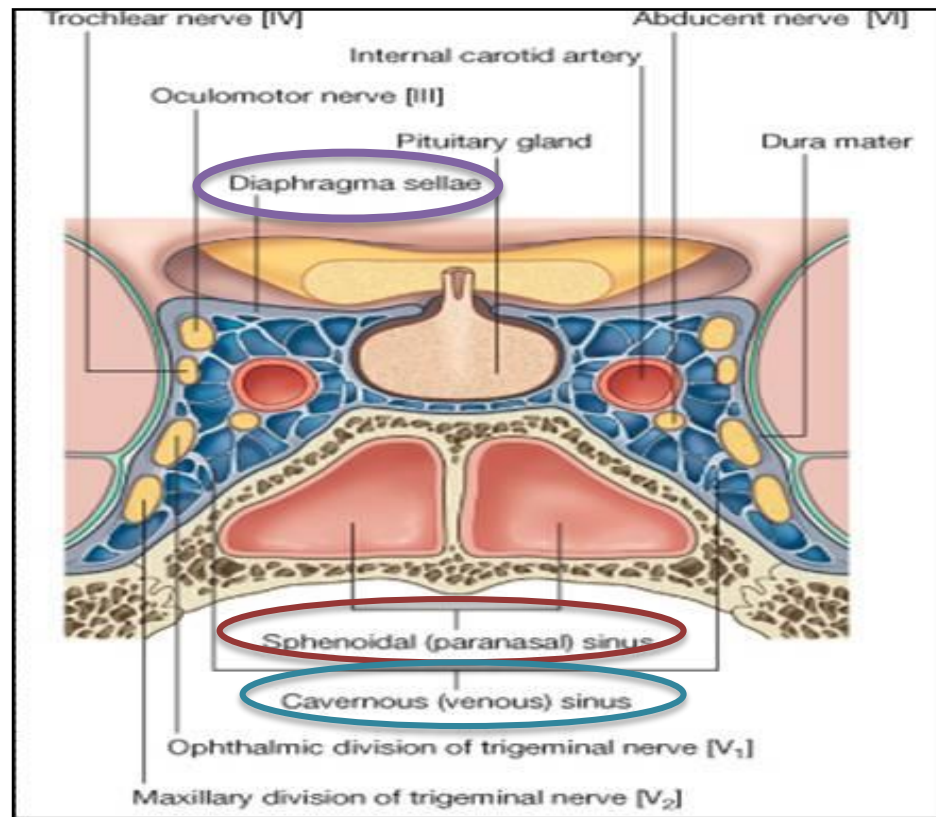
* sella turcica = تشبيه سرج الحصان

RELATIONS:

anteriorly	posteriorly	superior	Inferior	laterally
*Optic chiasma	Mamillary bodies	*Diaphragma sellae	Sphenoidal air sinuses	Cavernous sinuses



- *enlargement of pituitary gland
- >> pressure on optic chiasma(nasal field)
- >> Bilateral temporal eye field blindness
- >>he can't see the lateral side (can't drive)



*A fold of dura mater (Diaphragma sellae) covers the pituitary gland & has an opening for passage of infundibulum (pituitary stalk) connecting the gland to hypothalamus.

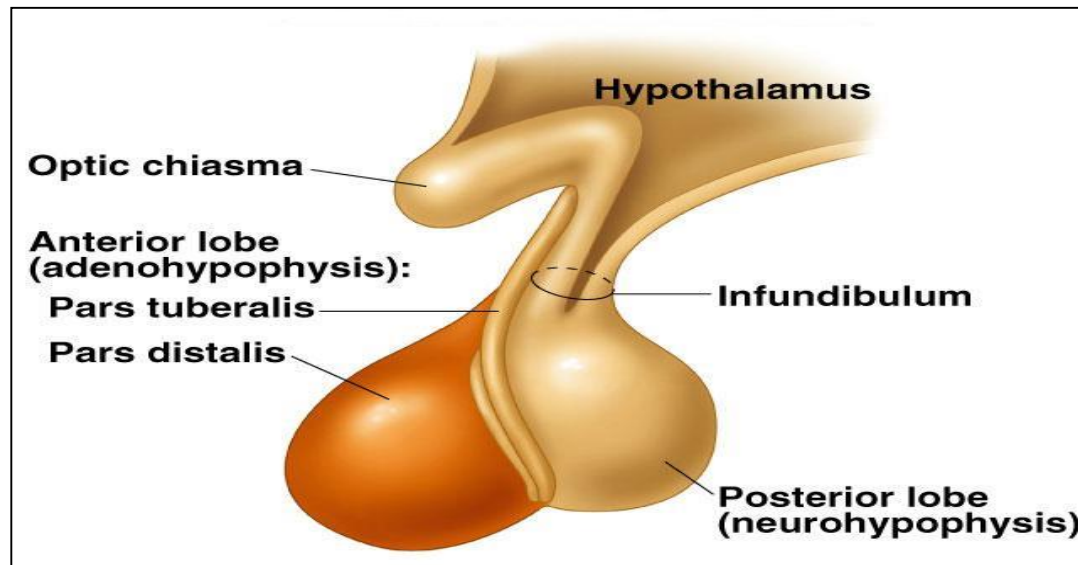
Subdivisions of pituitary gland

Anterior lobe “adenohypophysis”

- Known as True gland “secretes hormones”.
- (where hormone releasing/inhibiting produced by **hypothalamus** factor reach anterior lobe by **hypophyseal portal system**.)

Posterior lobe “neurohypophysis”

- Store hormone secreted .
- Connected to **hypothalamus** through **hypothalamo-hypophyseal tract**.



*Infundibulum = pituitary stalk = hypothalamo-hypophyseal tract.

BLOOD SUPPLY OF PITUITARY GLAND

ARTERIES:

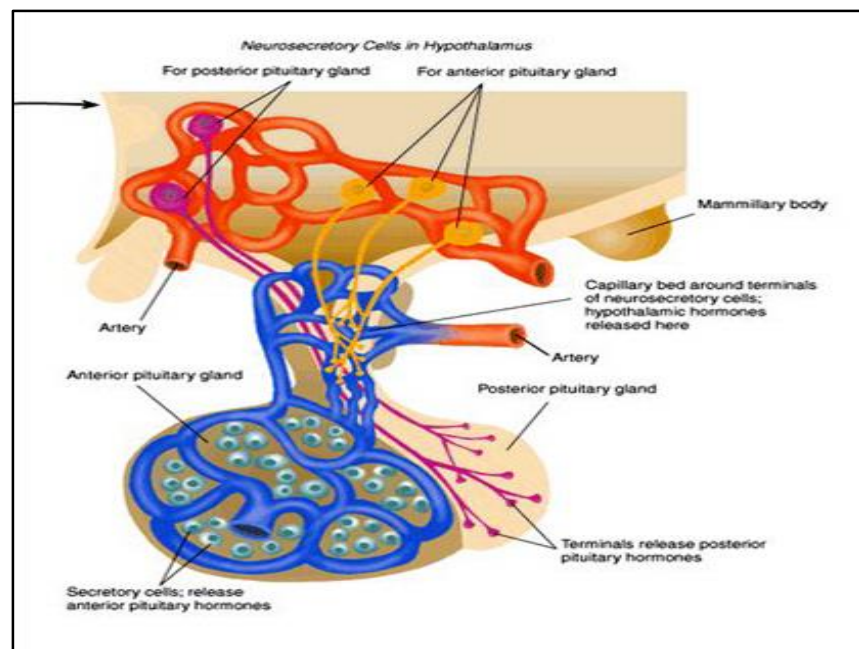
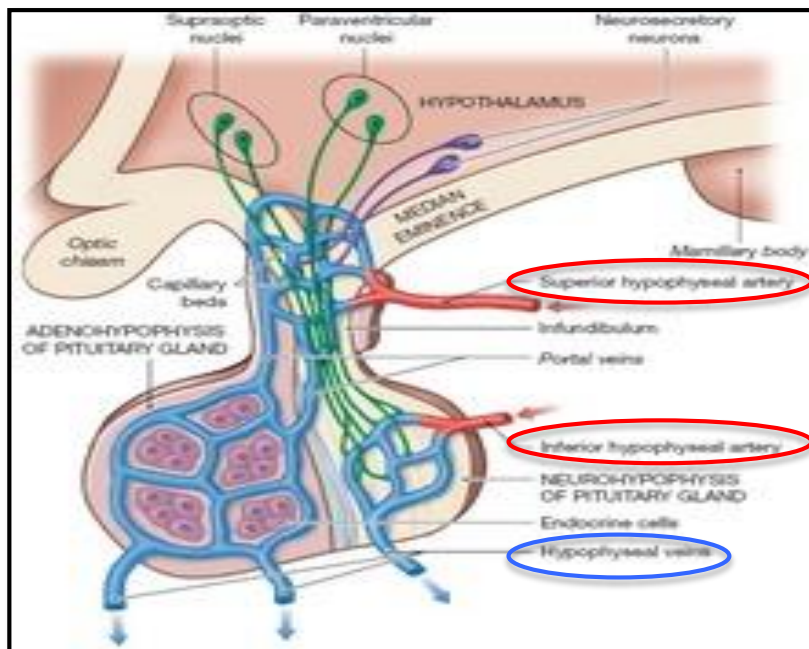
1. Superior hypophyseal arteries:
supplies infundibulum & forms a capillary network from which vessels pass downward & form sinusoids into the anterior lobe of pituitary gland (**hypophyseal portal system**)

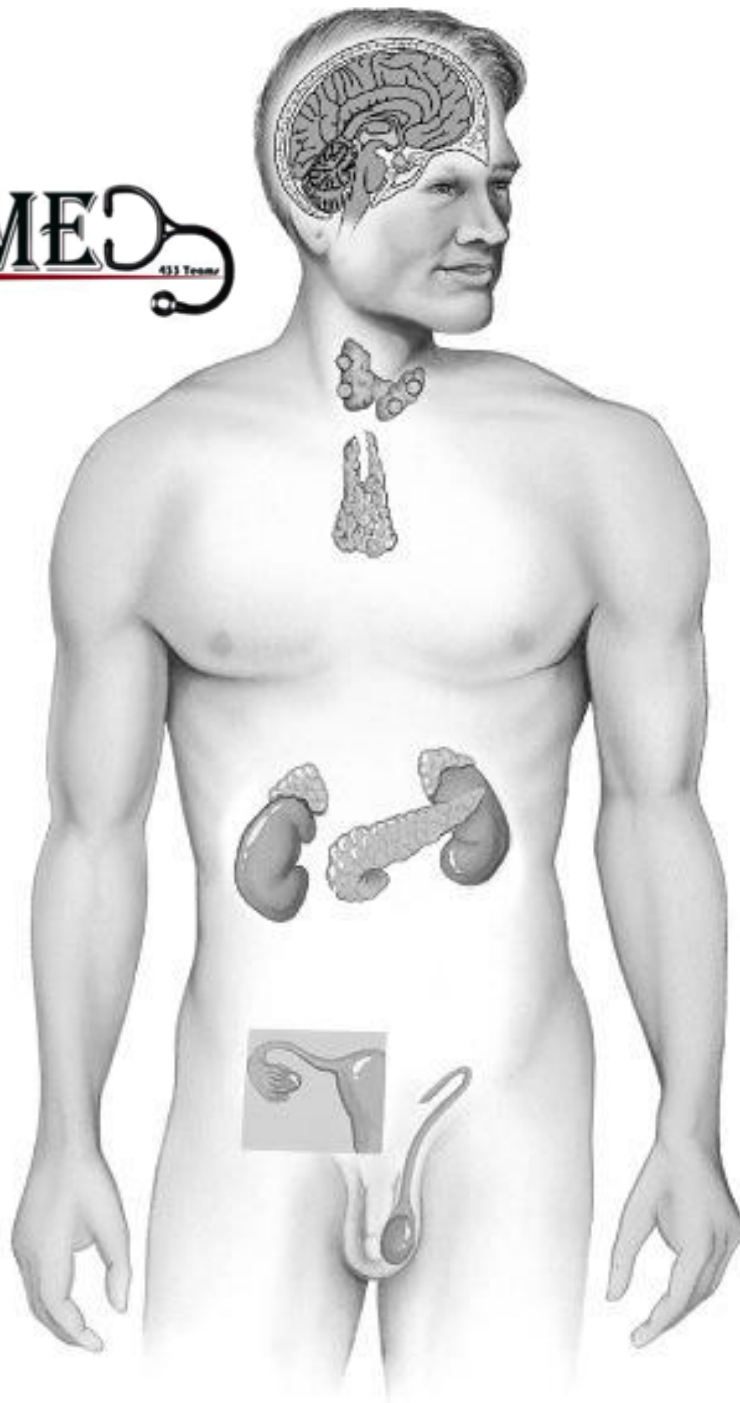
2. inferior hypophyseal arteries
supplies posterior lobe of pituitary gland.
“**doesn't contribute in hypophyseal portal system**”

VEINS:

Hypophyseal veins : Drain into Cavernous Sinuses

(N.B : 1-2 are both branches from Internal Carotid artery)





GOOD LUCK

Done by:

JOWAHER ALABDULKARIM

ANJOD ALMUHAREB

Revised by:

HASSAN ALMALAK

 anatomy433@gmail.com

 [@anatomy433](https://twitter.com/anatomy433)