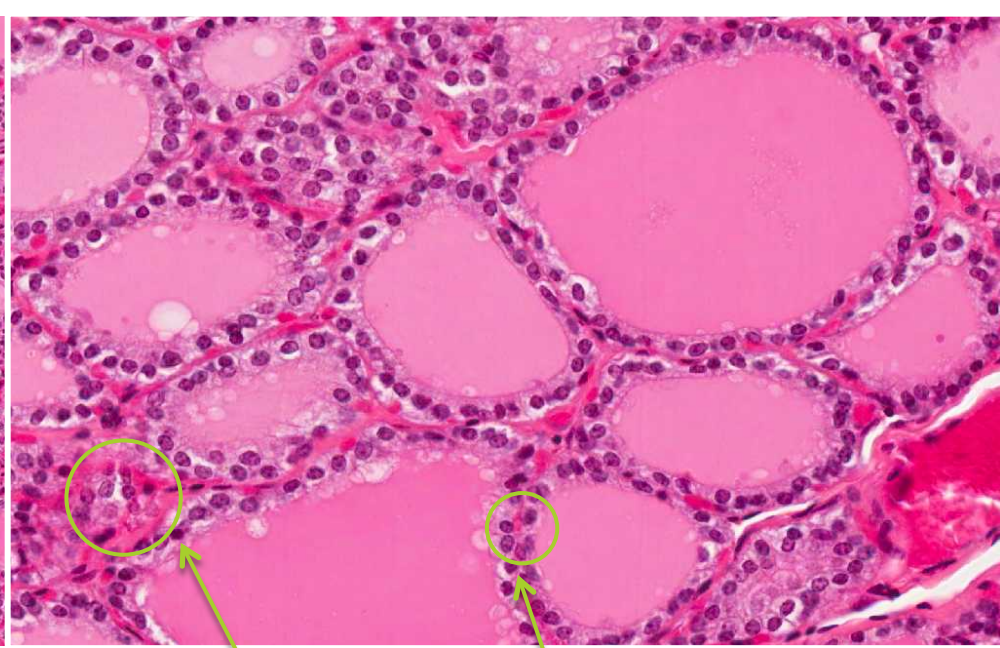
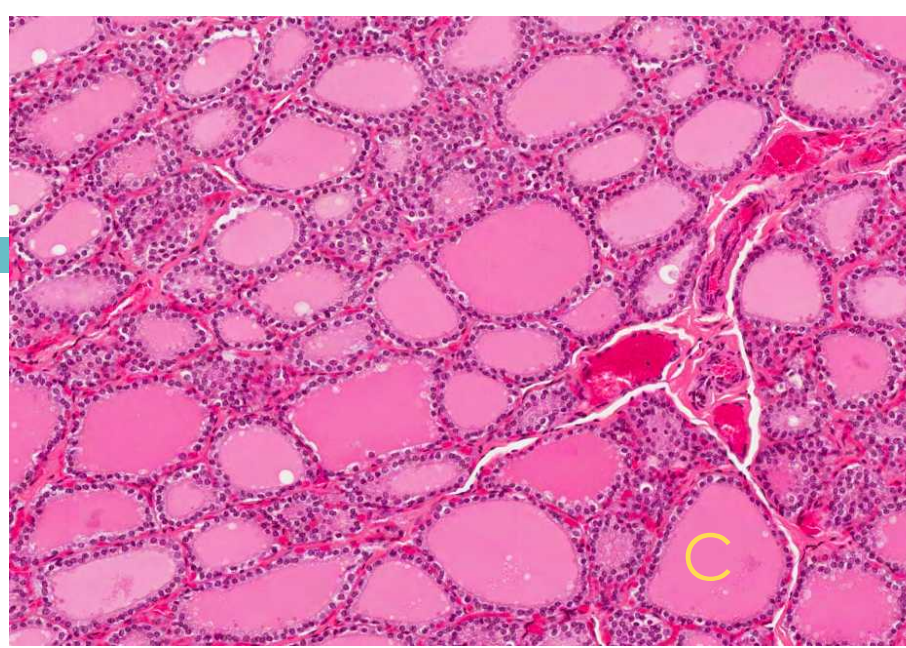




Practical histology

Endocrine block

There will be 2 histology stations in the exam.



Q1: Identify the structure

Thyroid gland

Q2: Mention 2 types of cells.

A: Follicular cell

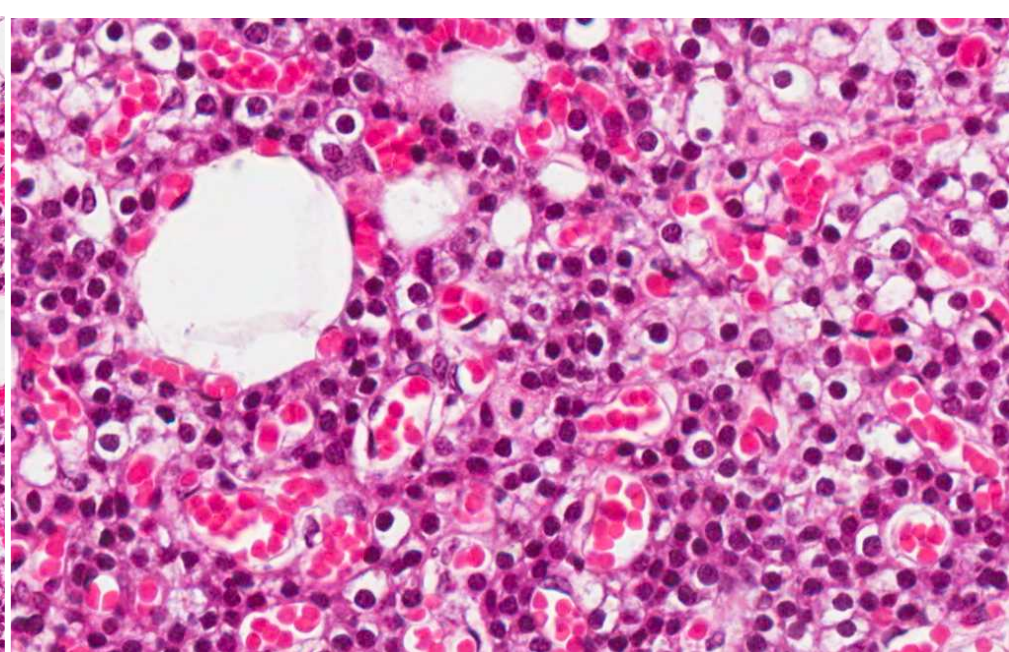
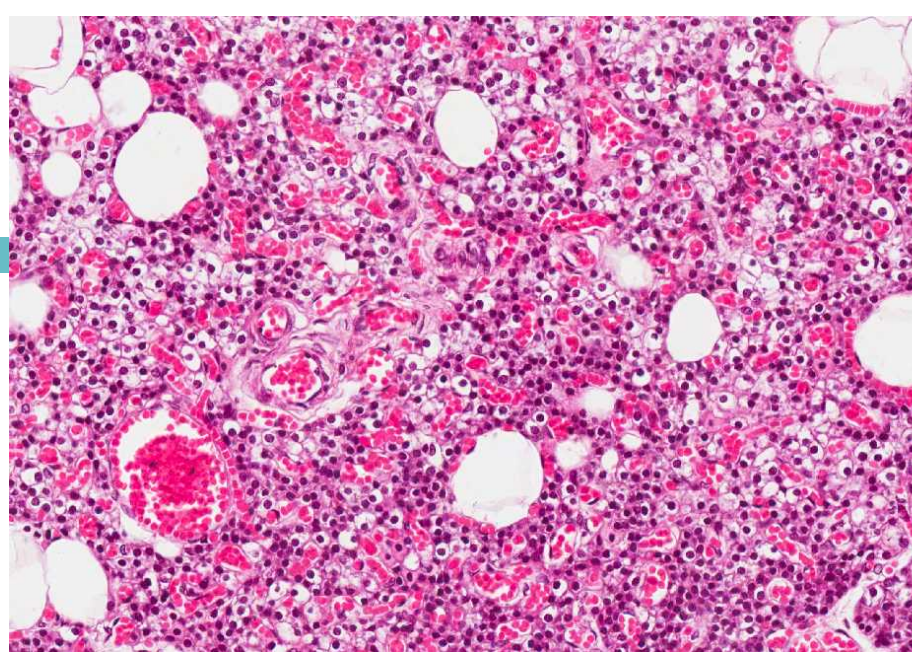
B: Parafollicular cell (lighter cytoplasm & larger size)

C: Colloid

D: Interfollicular cell

Q: what is the type of capillary in this structure?

Fenestrated capillary with diaphragm

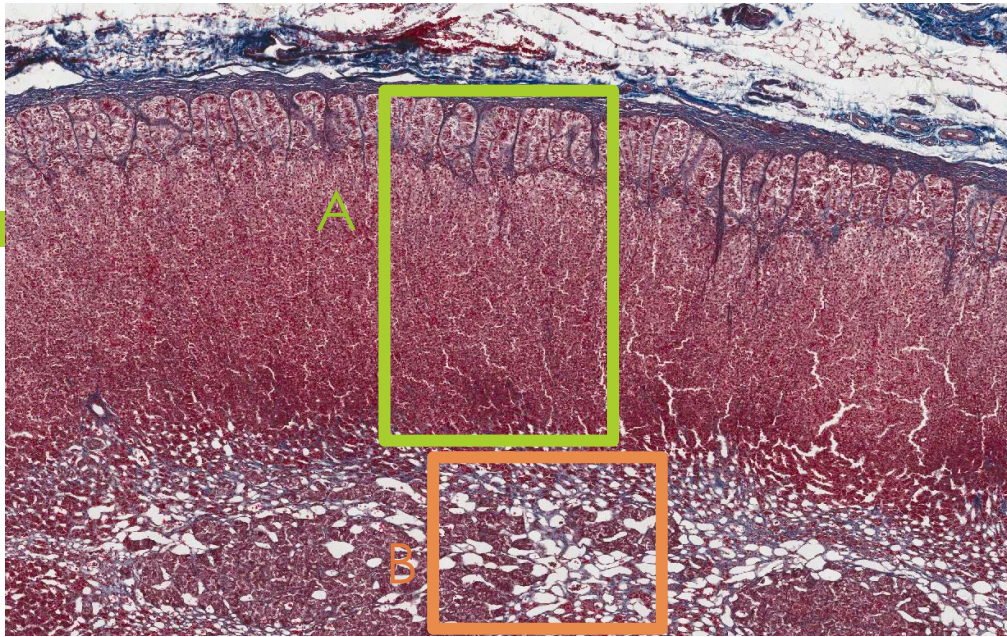


Q1: Identify the structure

Parathyroid gland

Q2: How many cell can be seen in this structure?

1. Chief cell
2. Oxyphil cells



Q1: Identify the structure

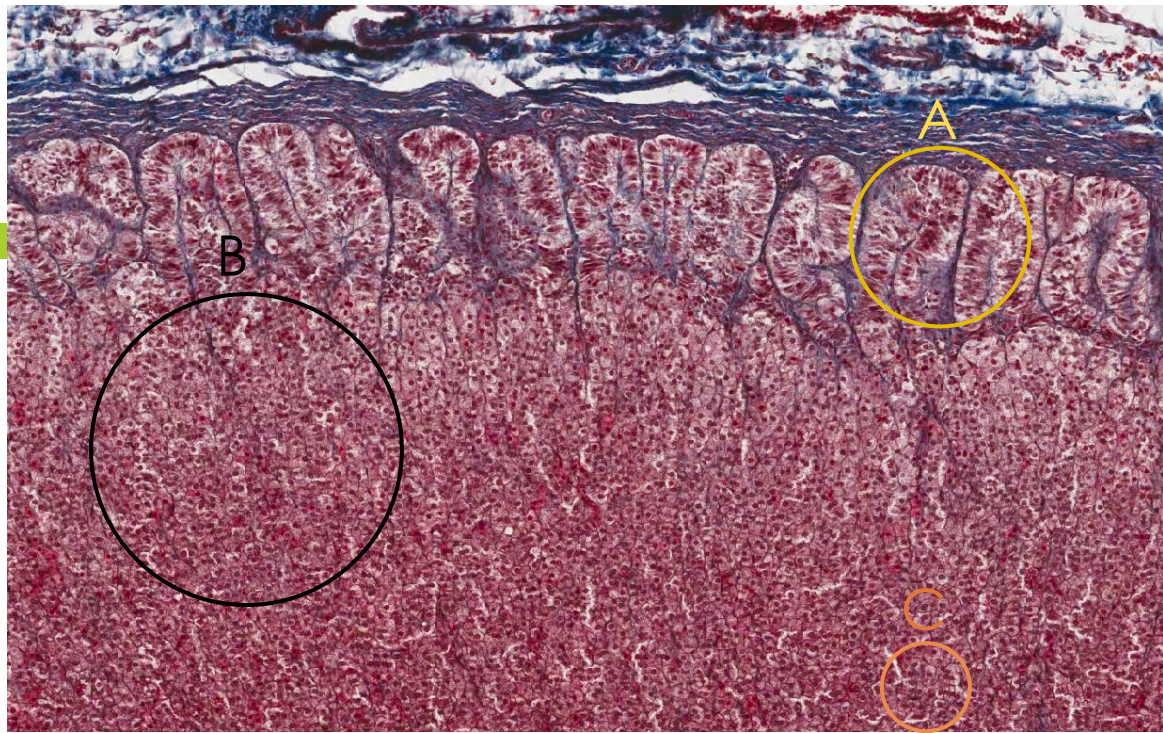
Adrenal gland

Q2: Identify A & B?

1. Adrenal cortex
2. Adrenal medulla

Q3: mention one cell can be seen in B?

Chromaffin cell



Q1: Identify the structure

Adrenal CORTEX

Q2: Identify A, B & C?

A: **Zona Glomerulosa**

B: **Zona fasciculata**

C: **Zona reticularis**