



# Histology Practical Revision

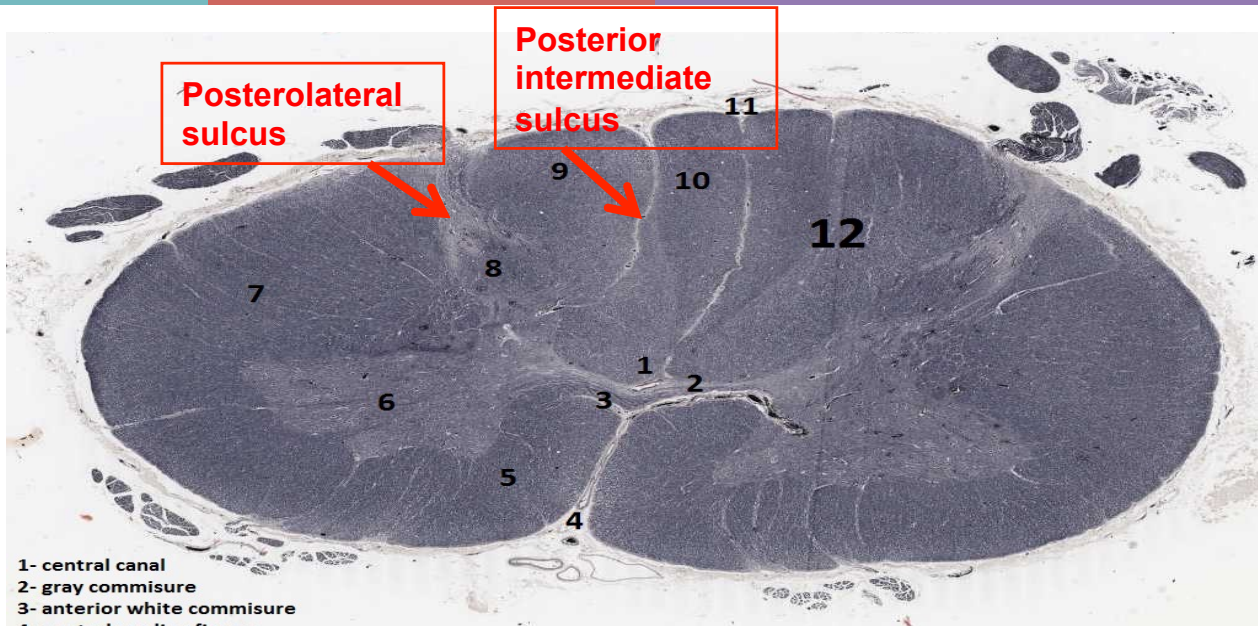
## Notes:

**Ependymal Cells** line up the ventricles and central canal, their **Function** is to facilitate CSF movement



**Done By:** Ouf Al Oofy **Edited By:** Amal Afrah

# Cervical Spinal Cord

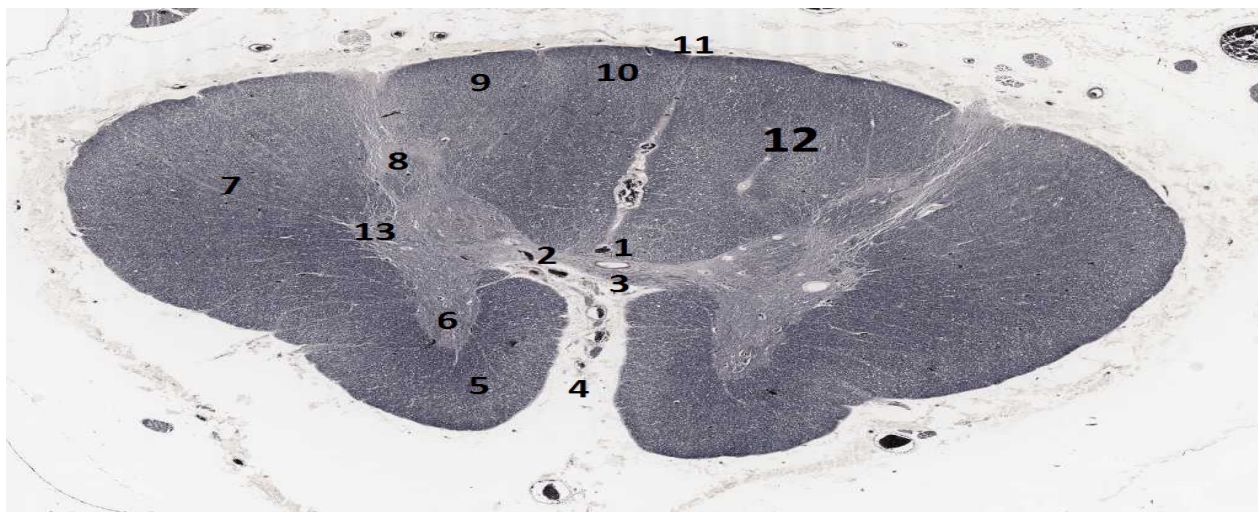


- 1- central canal
- 2- gray commissure
- 3- anterior white commissure
- 4- ventral median fissure
- 5- anterior white column
- 6- anterior gray horn
- 7- lateral white column
- 8- posterior gray horn
- 9- cuneate tract
- 10- gracile tract
- 11- dorsal median sulcus
- 12- posterior white column

- **Features:**
- 1. Oval in shape
- 2. Wide ventral horn
- 3. Thin dorsal horn



# Thoracic Spinal Cord

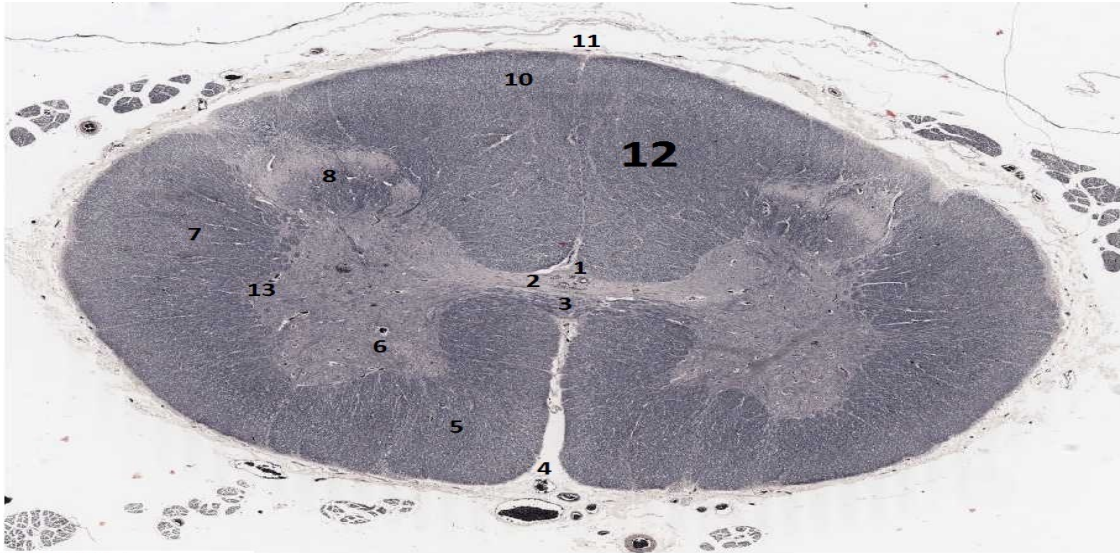


- 1- central canal
- 2- gray commissure
- 3- anterior white commissure
- 4- ventral median fissure
- 5- anterior white column
- 6- anterior gray horn
- 7- lateral white column
- 8- posterior gray horn
- 9- cuneate tract
- 10- gracile tract
- 11- dorsal median sulcus
- 12- posterior white column
- 13- lateral gray horn

## Thoracic Spinal Cord

- **Feature**
- 1. Ventral & Dorsal horns are thin
- 2. It has a lateral horn

# Lumbar Spinal Cord



- 1- central canal
- 2- gray commissure
- 3- anterior white commissure
- 4- ventral median fissure
- 5- anterior white column
- 6- anterior gray horn
- 7- lateral white column
- 8- posterior gray horn
- 9- cuneate tract "not found at this level"
- 10- gracile tract
- 11- dorsal median sulcus
- 12- posterior white column
- 13- lateral gray horn

## Lumbar Spinal Cord

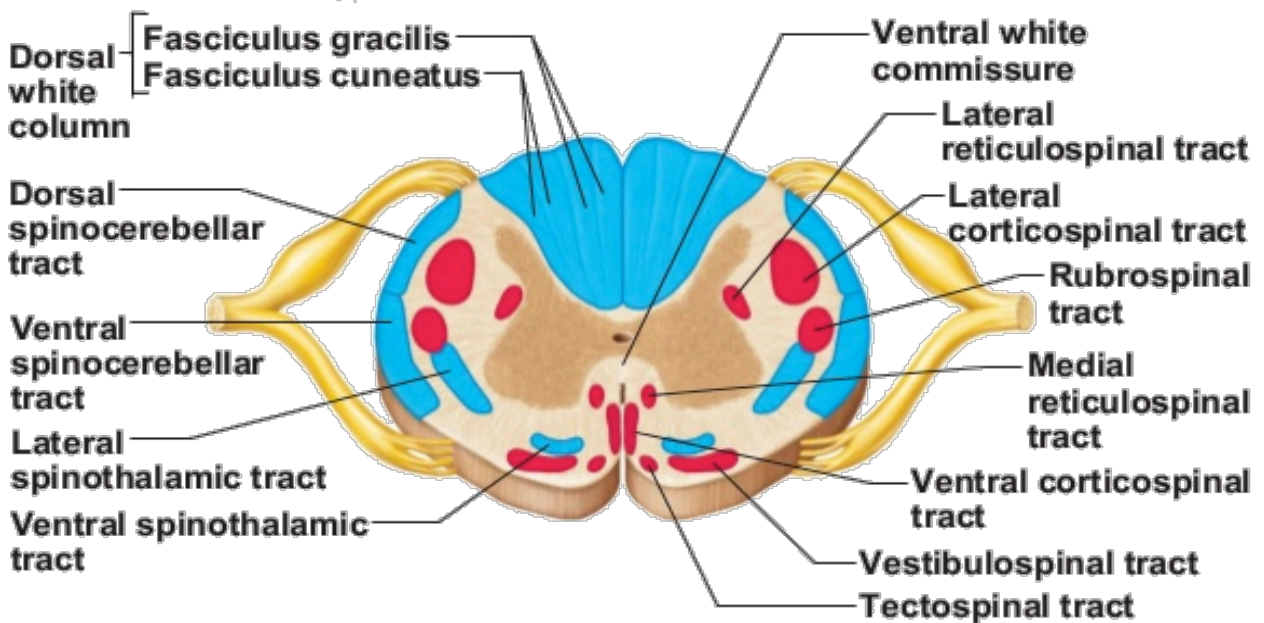
- **Features:**

1. Ventral & Dorsal horn are wide
2. IT has NO Cuneate Tract

# Tracts

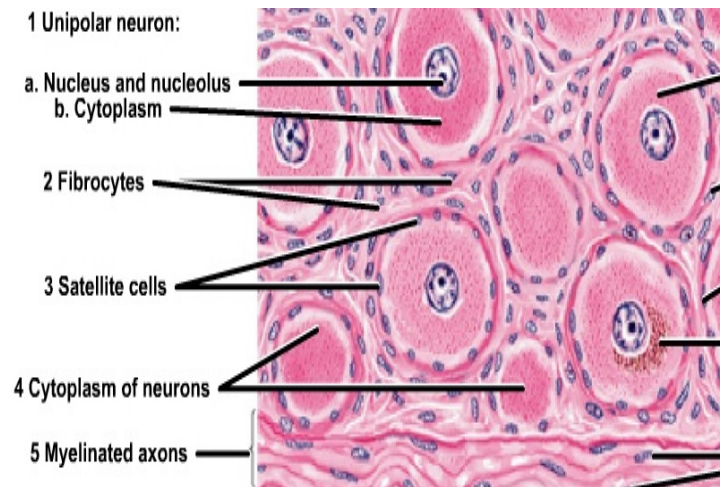
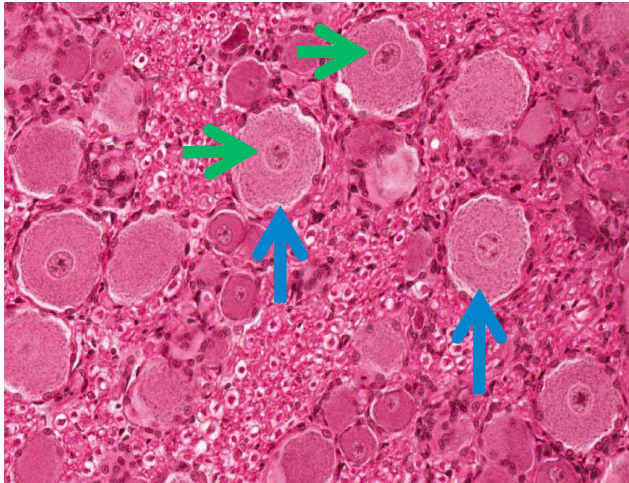
### Ascending tracts

### Descending tracts



Memorize the tracts location and function.

# Unipolar Neurons



- **Located in :**

- ✓ Spinal ganglion
- ✓ Mesencephalic nucleus of 5<sup>th</sup> CN

- **Contains:**

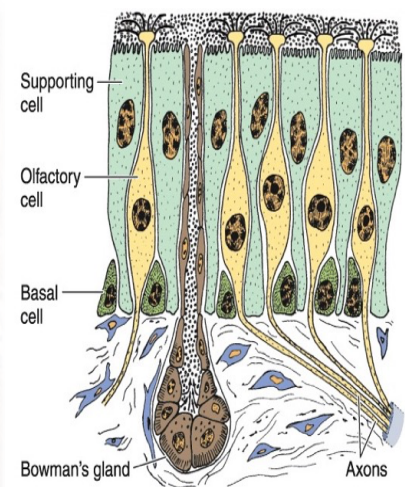
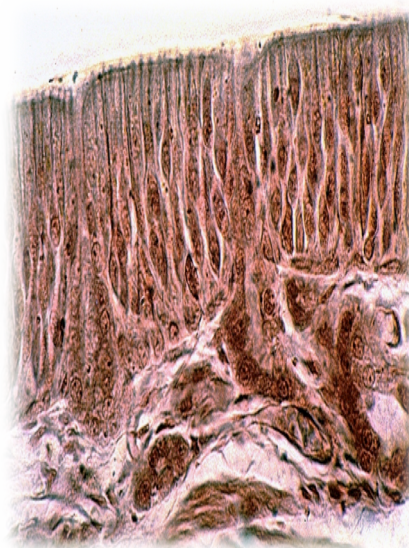
1. Cell body of Unipolar neurons
2. Nucleus and Nucleolus

---

# Bipolar Neurons

- **Located in:**

- ✓ Olfactory epithelium
- ✓ Retina

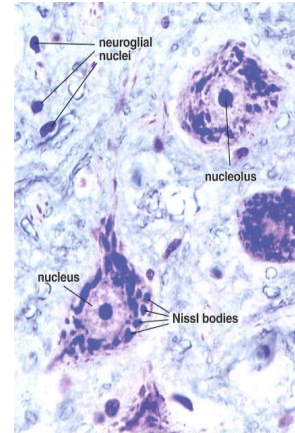
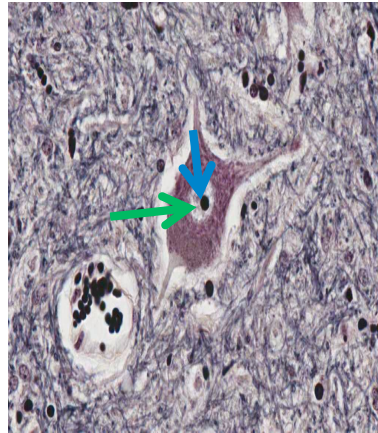


Bipolar neurons (in olfactory epithelium) (diagram)

# Multipolar Neurons

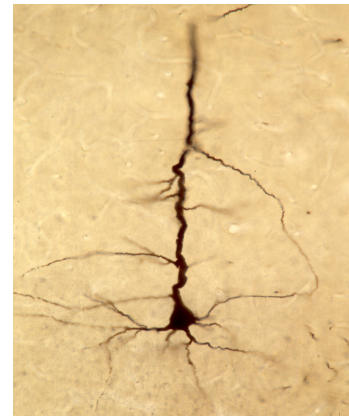
## 1- Stellate

- **Located in:**
  - ✓ Anterior horn cells of spinal cord
- **Contains:**
  1. Nucleus
  2. Nucleolus
  3. Nissle bodies



## 2- Pyramidal

- **Located in:**
  - ✓ Cerebrum



## 3- Pyriform

- **Located in:**
  - ✓ Purkinje cells of Cerebellum
- **Contains:**
  1. Purkinje cells with Nucleus & Nucleolus
  2. Dendrites of Purkinje cells

