

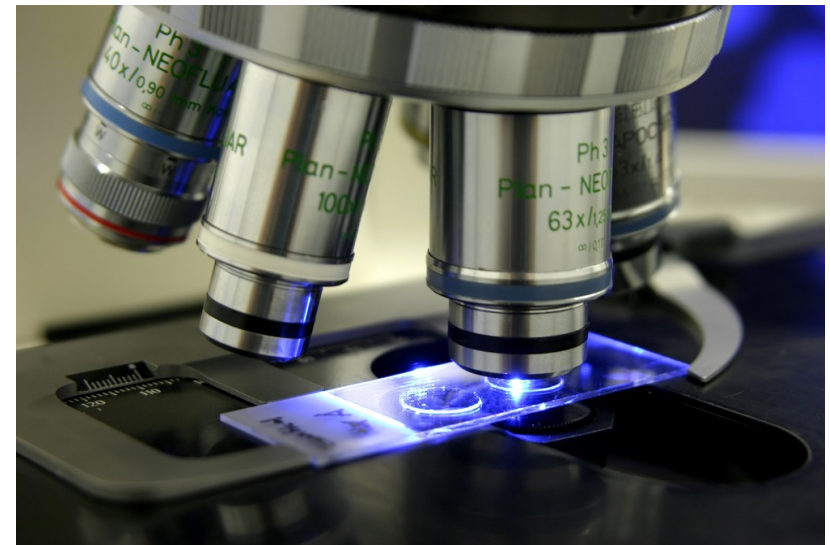
Histology practical



Endocrine block

Content:

Thyroid gland
Parathyroid gland
Adrenal gland
Adrenal cortex



Q1- Identify the structure

- **Thyroid gland.**

Q2- Mention the lining epithelium

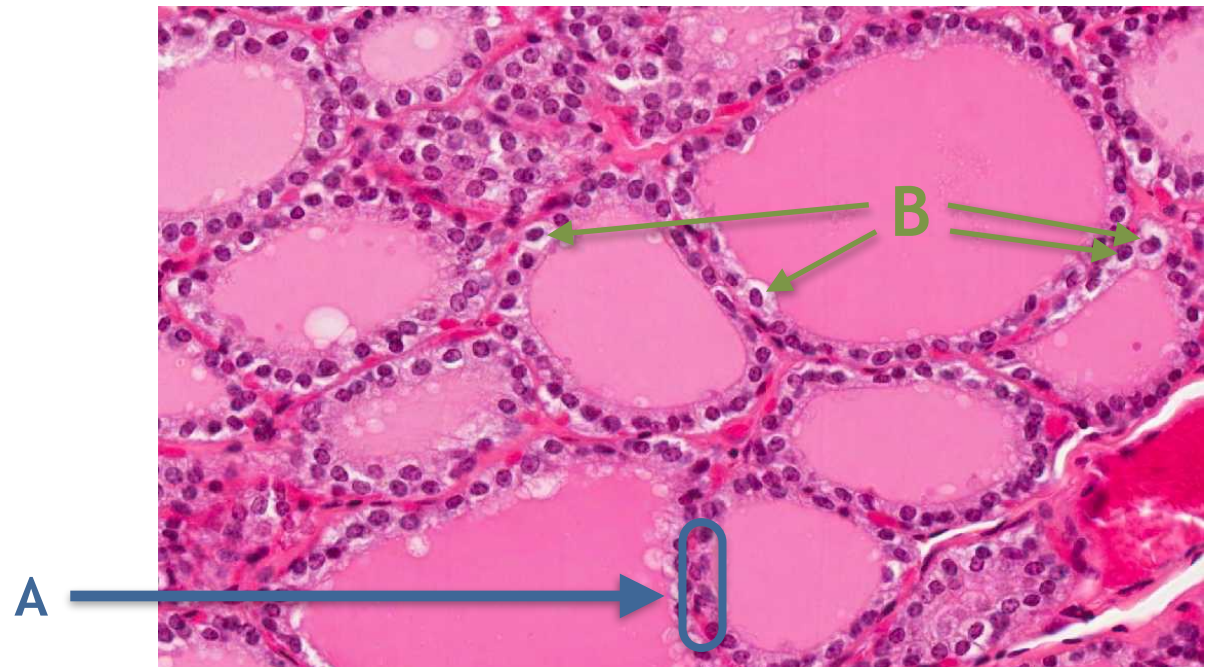
- **Simple cuboidal epithelium.**

Q3- Mention 2 types of cells

- A. Follicular cells** (Synthesis of thyroid hormones T4 & T3).
- B. Parafollicular cells** (Secrete calcitonin).
- C. Interfollicular cells.**
- D. Colloid cells .**

Q4- Whats is the type of capillary of the structure ?

- **Fenestrated blood capillaries.**

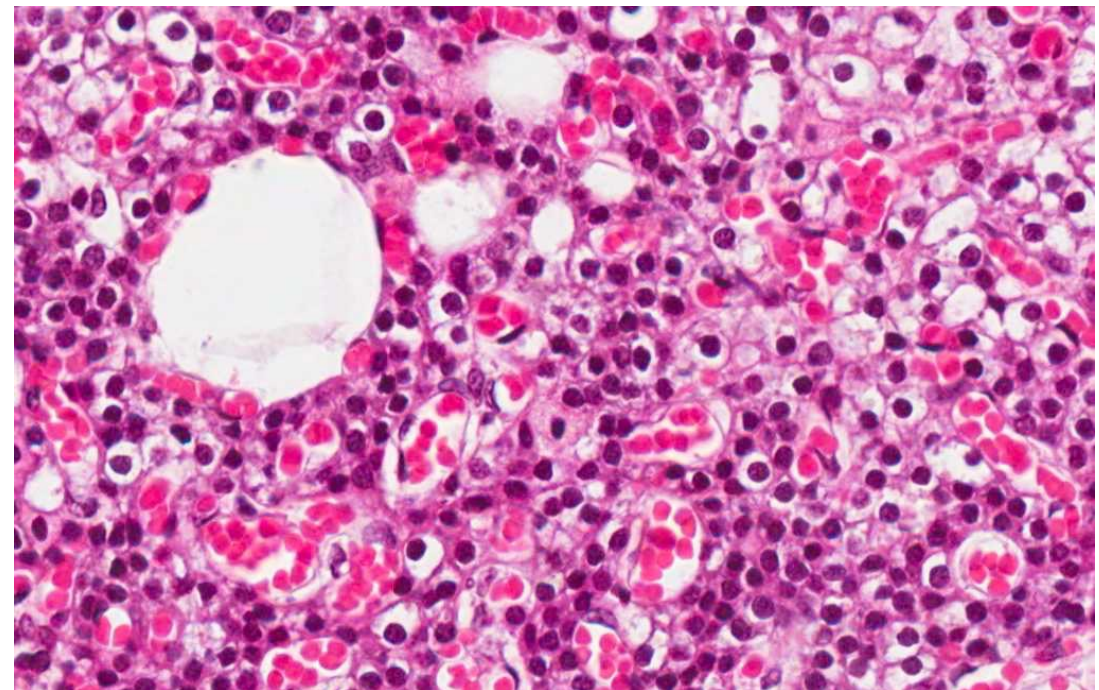
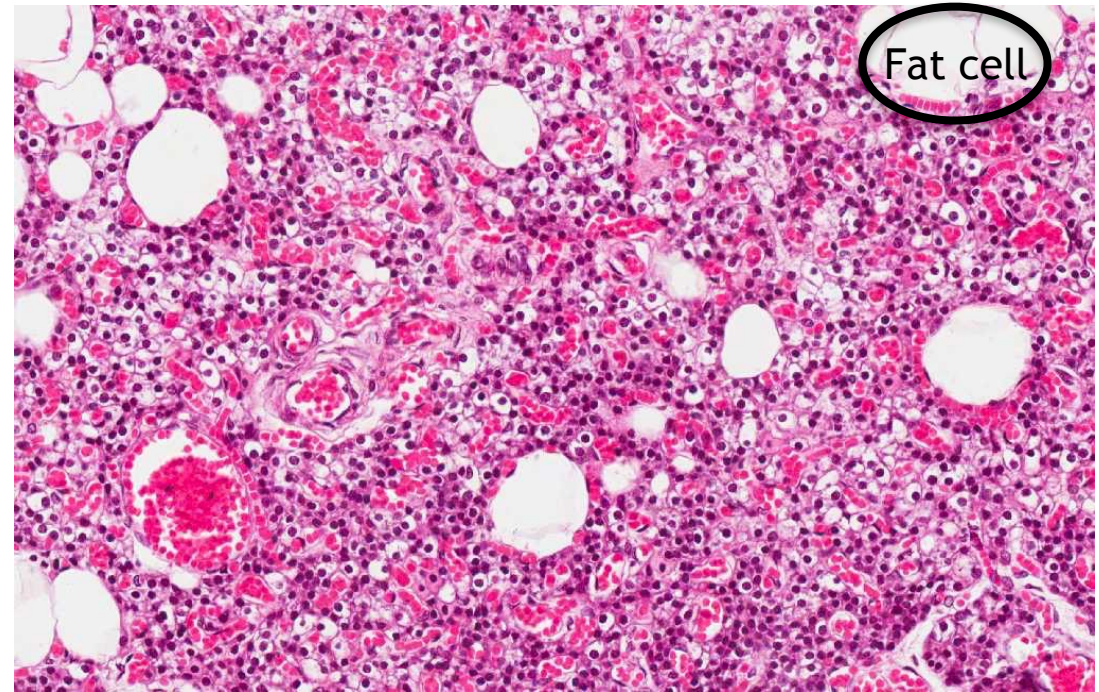


Q1- Identify the structure

- Parathyroid gland.

Q2- Mention the cells found in the structure

- A. Chief cells (Secrete parathyroid hormone).
- B. Oxyphil cells (Larger than Chief cells).



Q1- Identify the structure

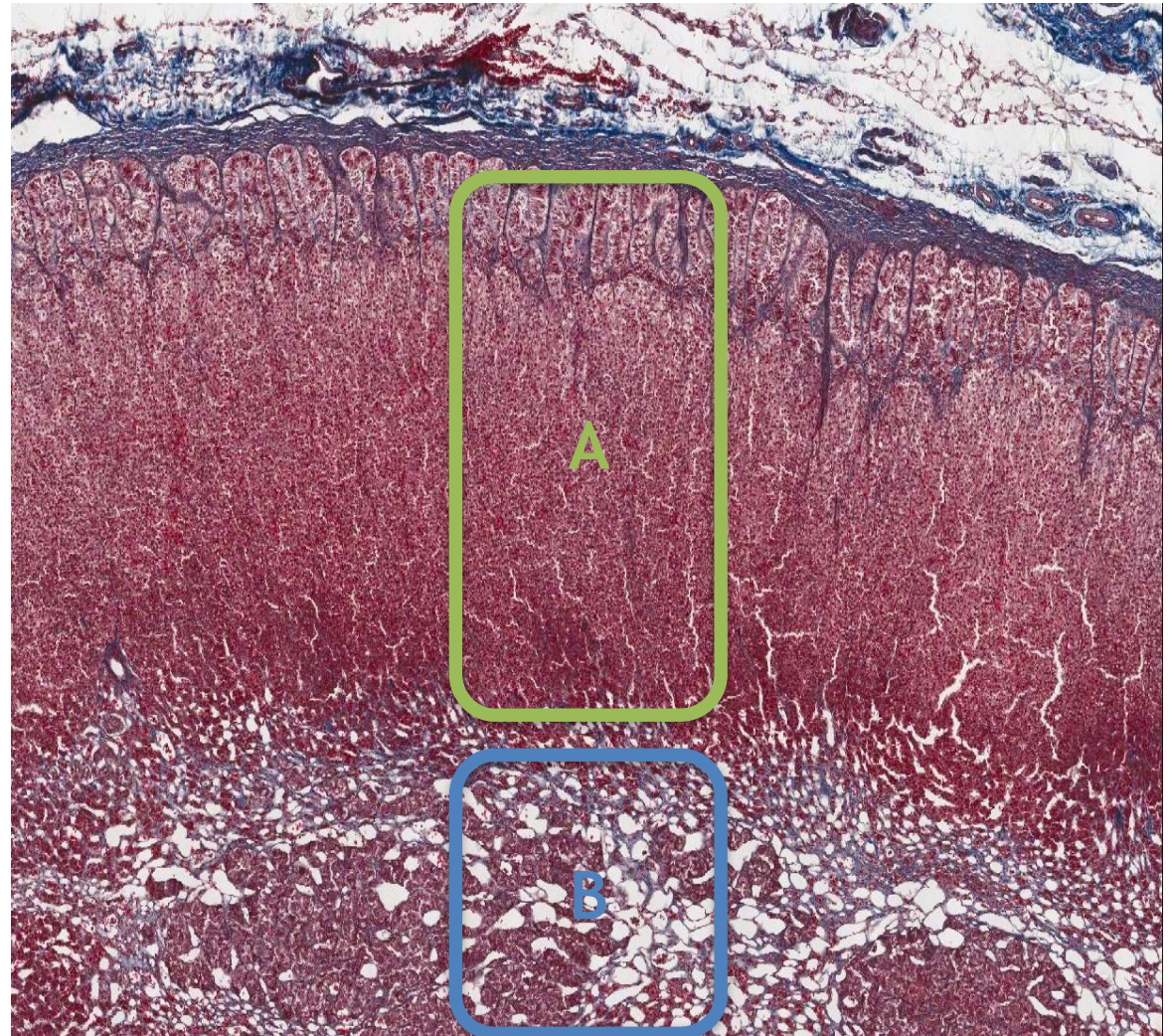
- Adrenal gland.

Q2- Identify A & B

- A. Adrenal Cortex.
- B. Adrenal Medulla.

Q3- Mention the cells that can be found in B

- Chromaffin cell.
- Sympathetic ganglion cells.

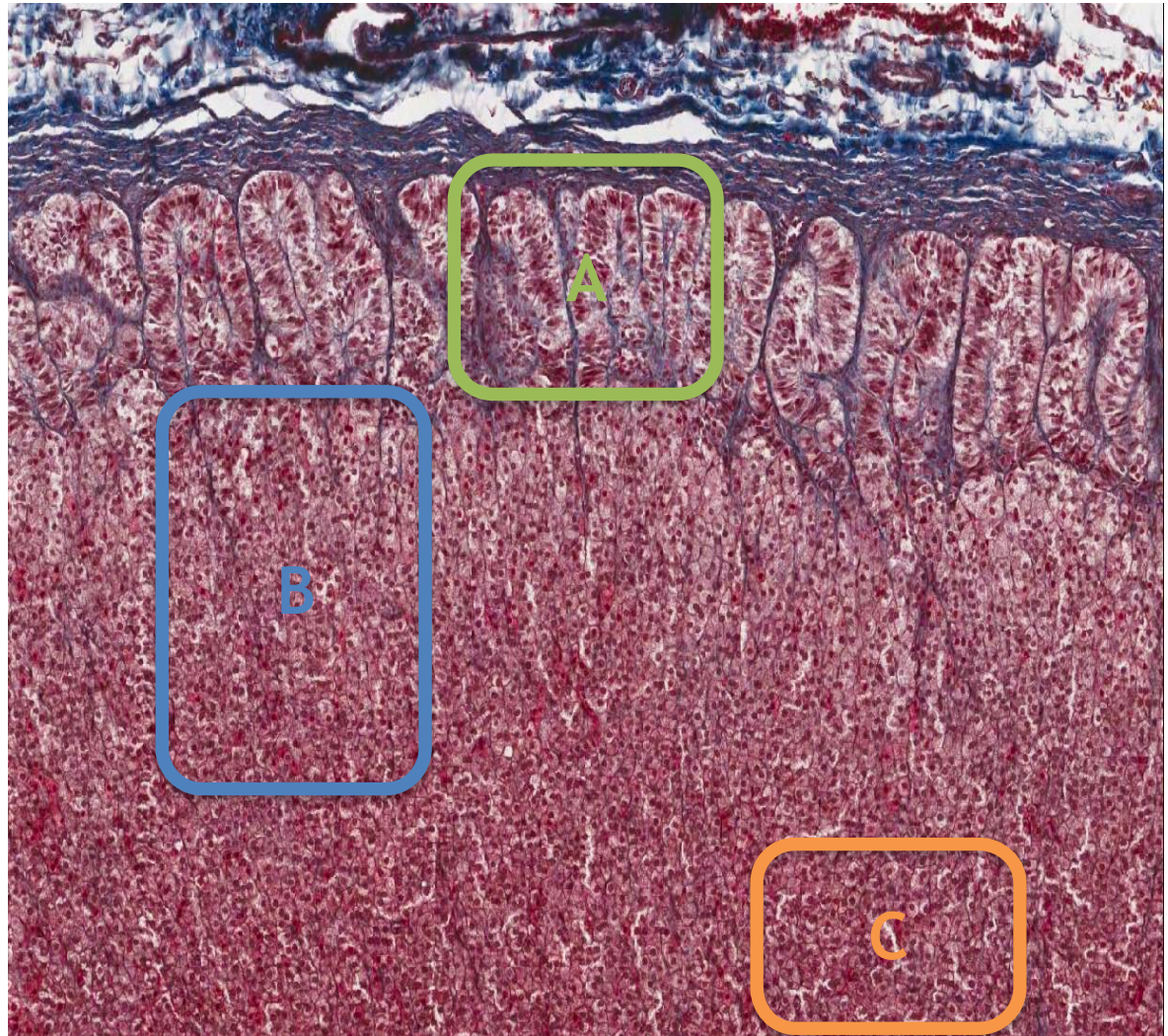


Q1- Identify the structure

- Adrenal CORTEX.

Q2- Mention the layers/
Identify A, B & C

- A. Zona Glomerulosa** (Produces mineralocorticoids).
- B. Zona Fasciculata** (secrete glucocorticoids).
- C. Zona Reticularis** (secrete androgens).



Done By:

Khaled Alfahad
Ouf Aloofy

FOLLOW
ONE
COURSE
UNTIL
SUCCESSFUL

Thank you for checking our work

For any correction, suggestion or any useful information do not hesitate to contact us: histology434@gmail.com