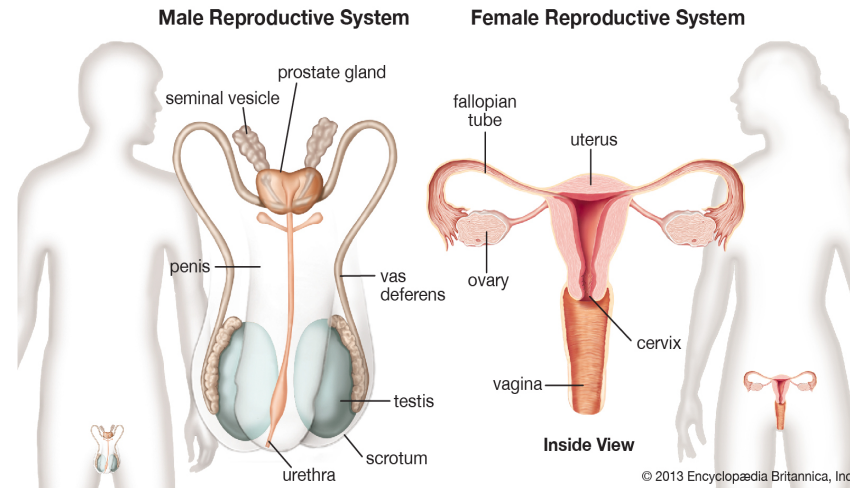


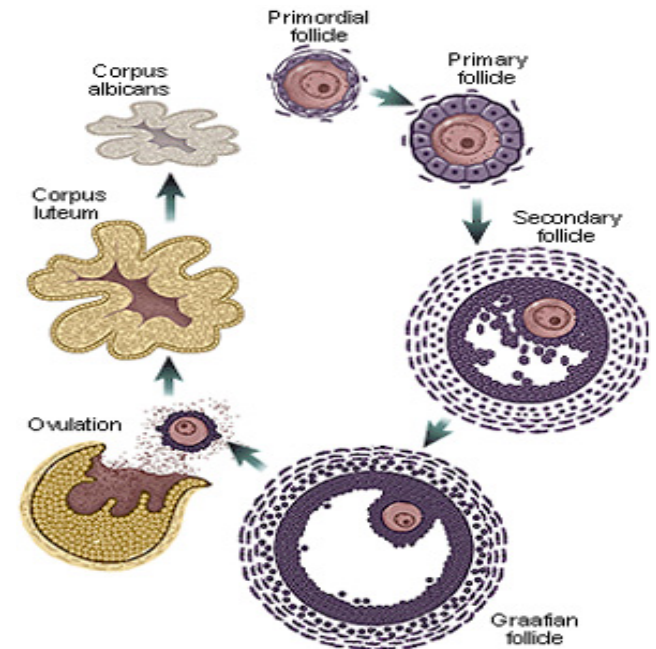
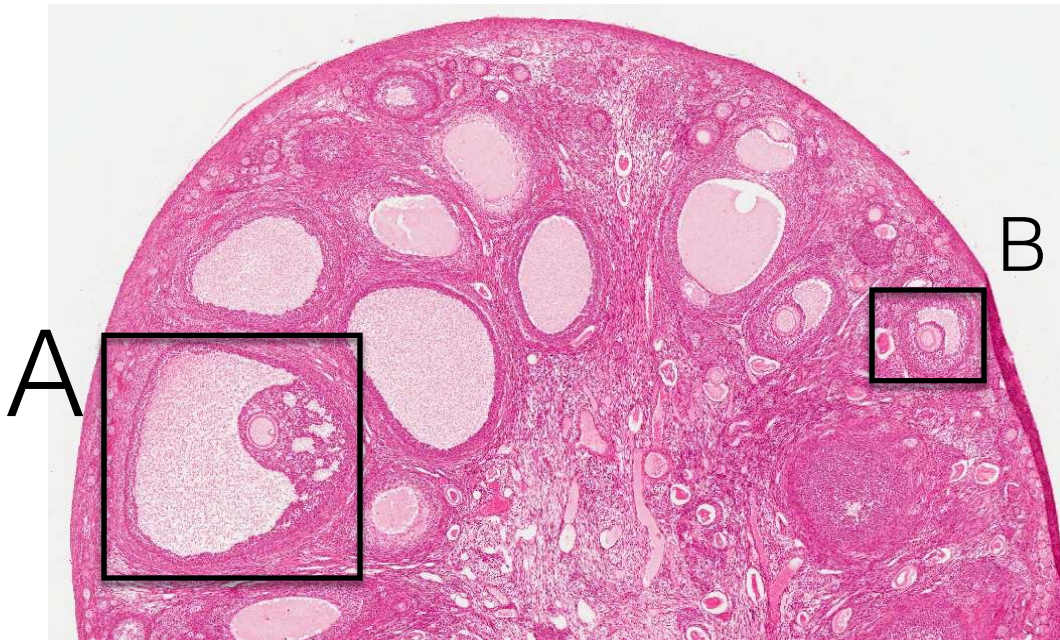
# Histology Practical

## Reproductive System



# Ovary

## Ovarian follicle stages:



Q1: Identify the structure

- Ovary.

Germinal epithelium: outer layer of flat cells.

Q2: Identify the labeled structures A,B

- A: Mature (Graafian) follicle.
- B: Secondary follicle.

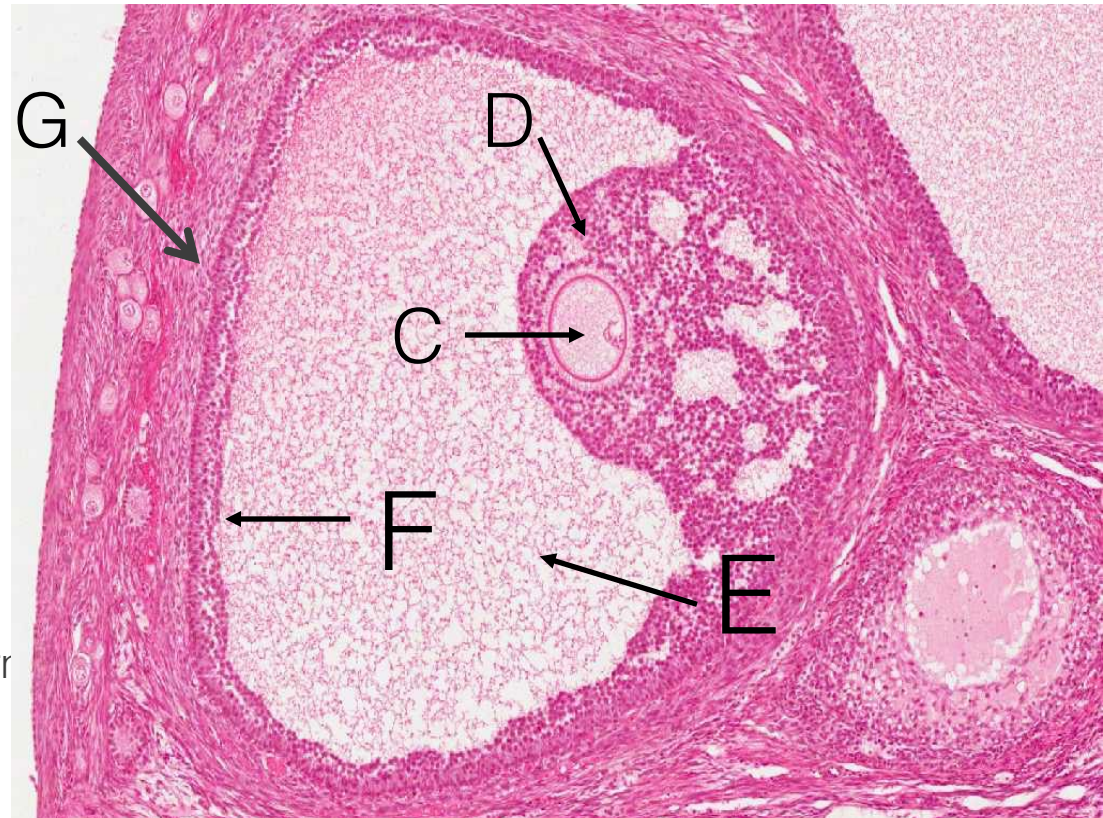
# Graafian Follicle

Q1: Identify the structure

- Mature (Graafian) follicle.

Q2: Identify the following structures (components)

- C: Primary Oocyte.
- D: Corona radiata.
- E: Follicular antrum.
- F: Folliculi
- G: Theca folliculi, internal & external



# Fallopian Tube

Q1: Identify the structure

- Fallopian tube.

Q2: Mention the layers

- Mucosa
- Muscularis.
- Serosa

Q3: Mention the type of lining epithelium

- Simple columnar partially ciliated epithelium and partially secretory (Peg cells).

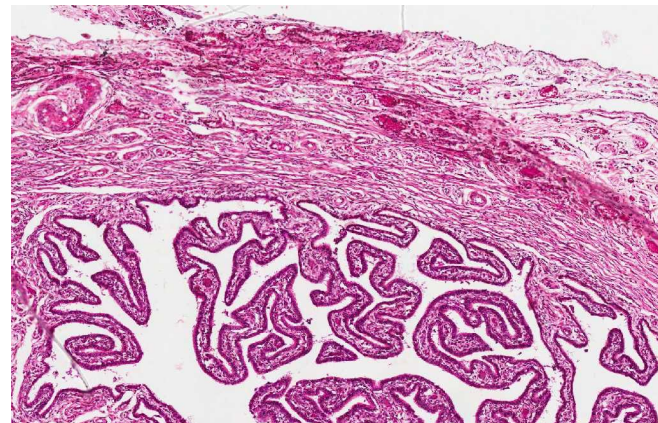
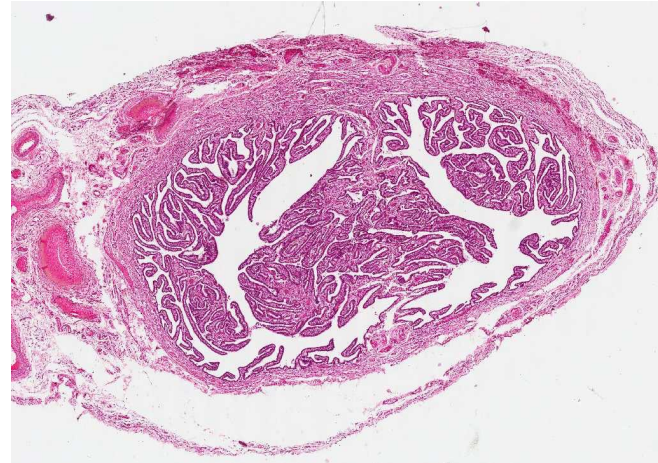
Q4: Mention the layers of musculosa in this structure

- Inner circular.
- Outer longitudinal.

Contains:

Ciliated cells: non-secretory cells.

Non-ciliated cells (peg cells): secretory cells.



# Uterus

Q1: Identify the structure

- Uterus.

Q2: Mention the lining epithelium

- Simple columnar partially ciliated epithelium.

Q3: Mention the layers in this structure

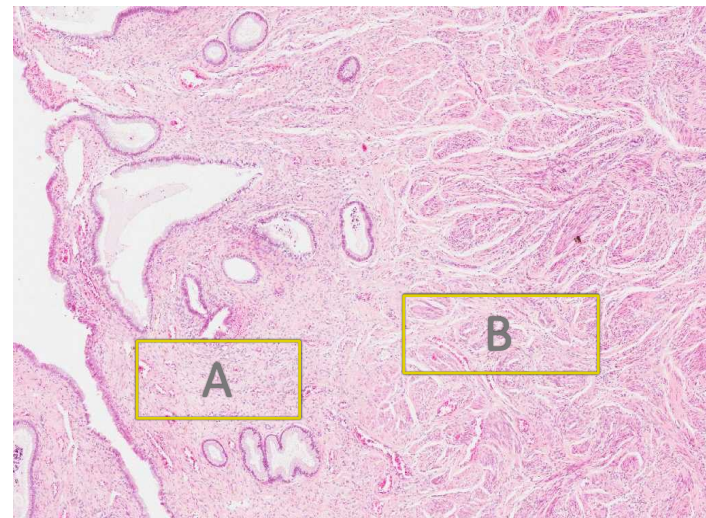
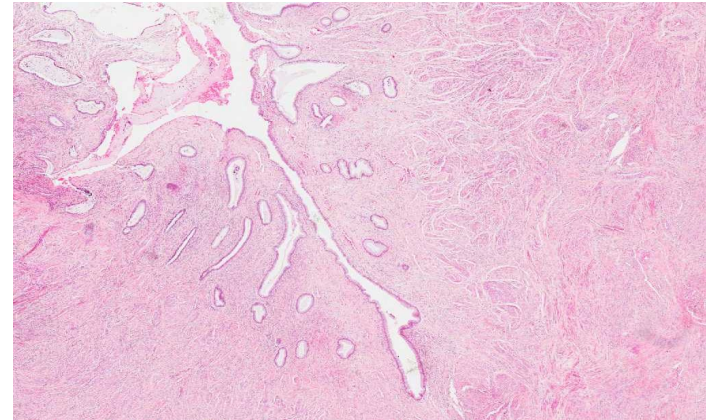
- Endometrium (mucosa).
- Myometrium (musculosa).
- Perimetrium (serosa).

Q4: Mention the layers of Myometrium

- Stratum submucosum (longitudinal).
- Stratum vasculare (Circular).
- Stratum supravasculare (longitudinal).

Q5: Identify labeled structures A,B:

- A: Stratum functionalis.
- B: stratum Basalis.



# Placenta

Q1: Identify the structure

- Placenta.

Maternal part (decidua basalis)

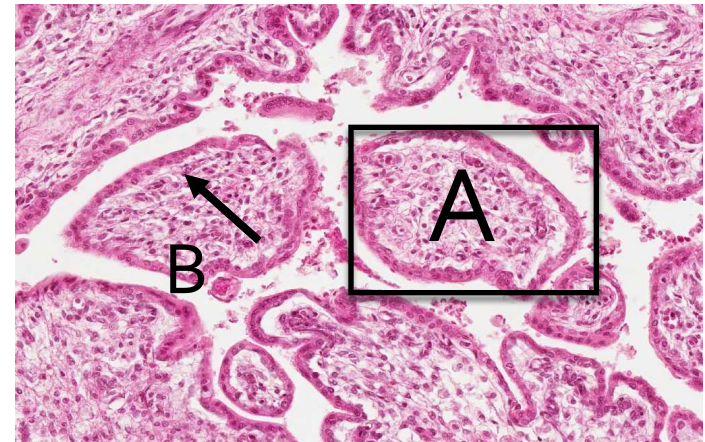
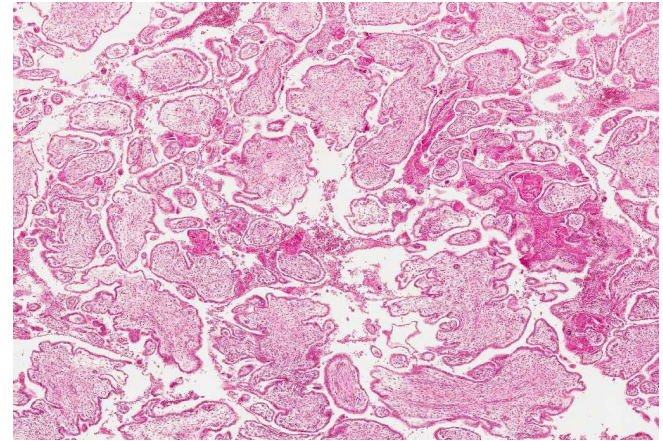
Foetal part (chorionic villi)

Q2: Mention layers of the placental barrier from outermost to innermost.

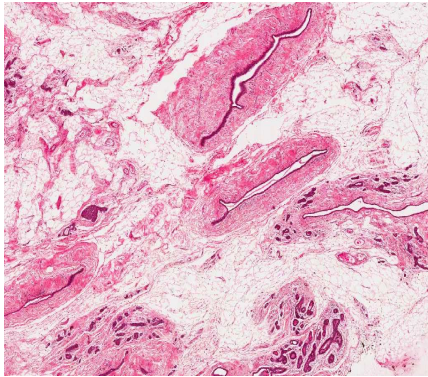
- Syncytiotrophoblast.
- cytotrophoblast (disappear during late months of pregnancy).
- Basement membrane of trophoblast.
- Connective tissue of the villus.
- Basement membrane of fetal capillaries.
- The endothelium of fetal capillaries.

Q3: Identify the labeled structures A,B

- A: chorionic villi.
- B: Trophoblast.



# Mammary Gland



## Resting (non-lactating):

### Q1: Identify the structure

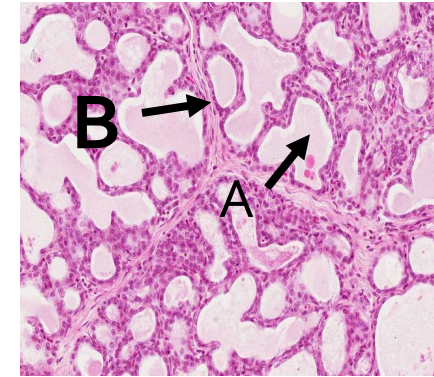
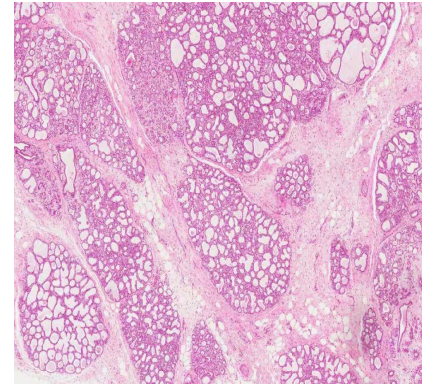
- Resting (non-lactating) mammary gland.  
Secretory units appear only during pregnancy and are functioning only during lactation

### Q2: Mention 2 structures seen in this picture

- Ducts. (A)
- Dense connective tissue with numerous fat cells (adipose C.T.).

### Q3: What is the lining epithelium in this structure ?

- Simple cuboidal,
- Stratified columnar in the areola then
- Stratified squamous in the nipple.



## Lactating:

### Q1: Identify the structure

- Lactating mammary gland.

### Q2: Mention 2 structures seen in the picture

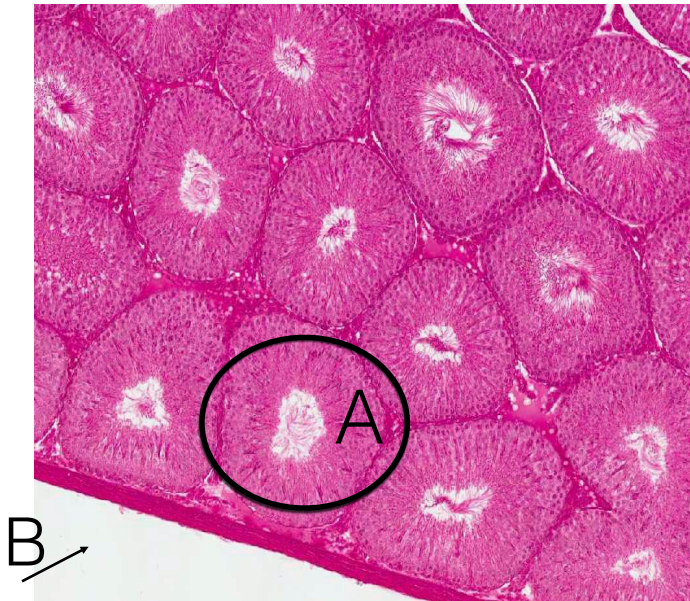
- Alveoli (A) (contains milk).
- Ducts

Myoepithelial cell cannot be seen easily.

### Q3: What is the lining epithelium of the alveoli ?

- Simple cuboidal epithelium
- myoepithelial cells.

# Testis



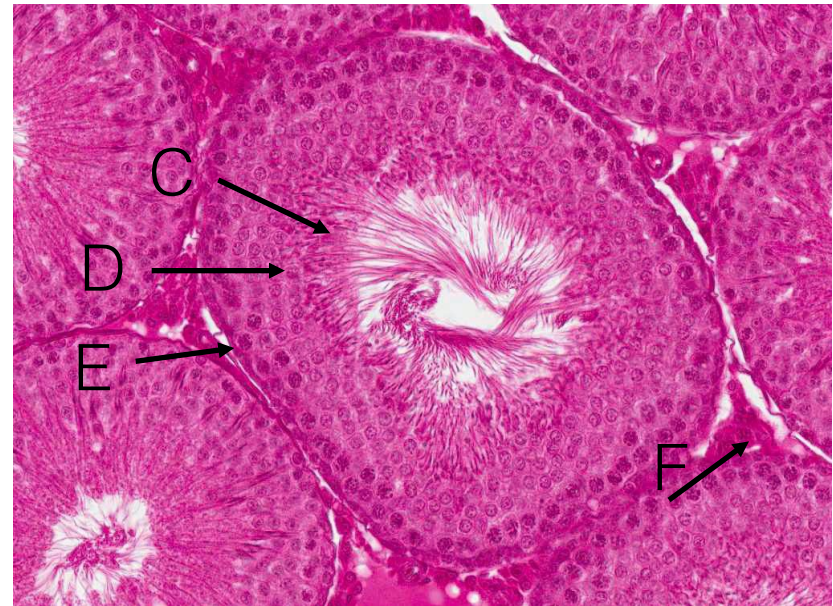
Q1: Identify the structure

- Testis.

Q2: Identify the labeled structure

- A: Seminiferous tubule.
- B: Tunica Albuginea.

# Seminiferous Tubules



Q1: Identify the structure

Seminiferous tubule each tubule is lined with a stratified epithelium called seminiferous epithelium which is formed of 2 type of cells:

- 1- Sertoli cells
- 2-Spermatogenic cells

Q2: Identify the labeled structures:

- C: Spermatid **and sperms**.
- D: Primary Spermatocyte.
- E: Spermatogonia (larger and denser).
- F: Interstitial (Leydig) cell (secrete testosterone).



# Epididymis

Q1- Identify the structure

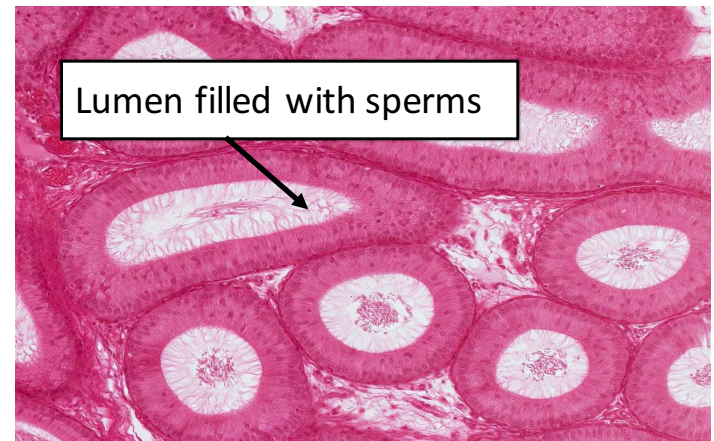
- Epididymis.

Q2- What is the lining epithelium?

- Pseudo-stratified columnar epithelium with stereocilia, It is surrounded by bundles of smooth muscle fibers

Q3- What is the function of this structure?

- It stores and helps in maturation of spermatozoa.



# Vas Deferens

Q1: Identify the structure

- Vas deferens.

Q2: Identify the layers of the wall of it.

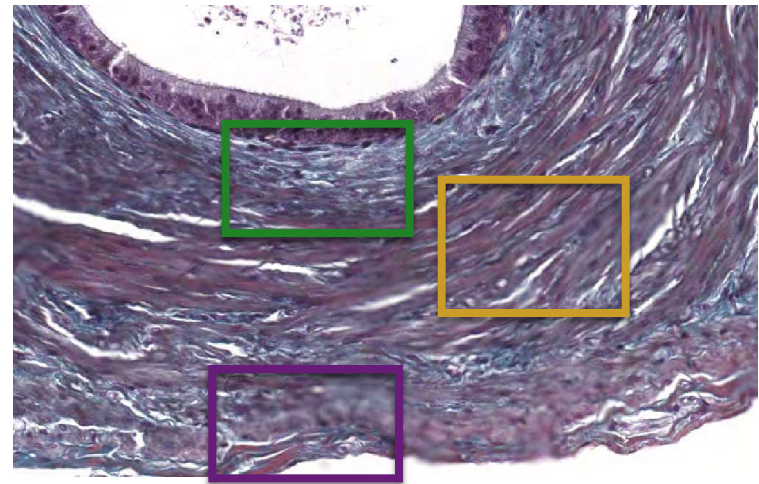
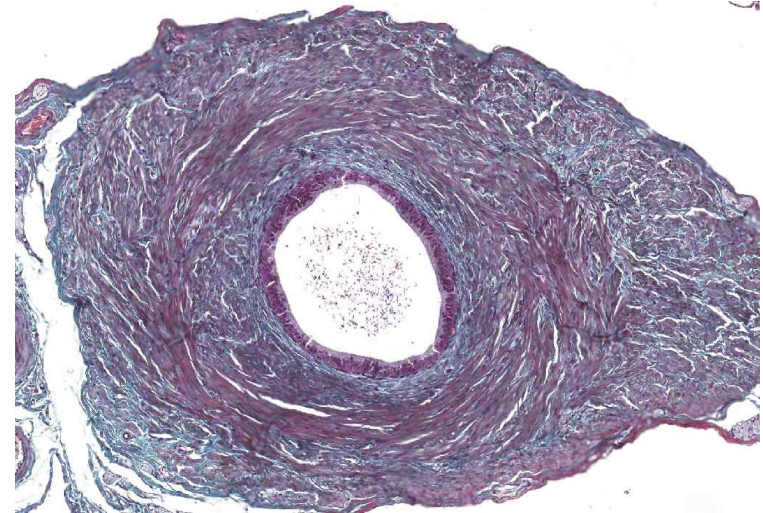
- Mucosa
- Muscularis.
- Adventitia.

Q2: What is the lining epithelium?

- Pseudo-stratified columnar epithelium with stereocilia.

Q3: Mention the layers that can be seen in this structure.

- Mucosa.
- Muscularosa (has 3 layers: Inner longitudinal, middle circular & outer longitudinal).
- Adventitia.



# Prostate Gland

Q1: Identify the structure

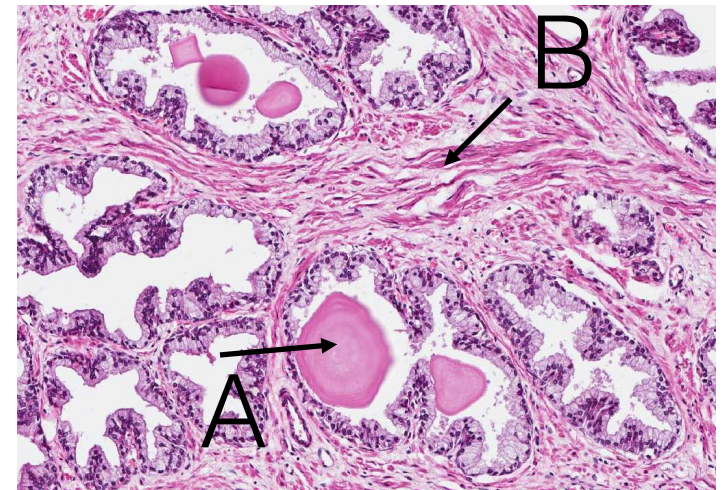
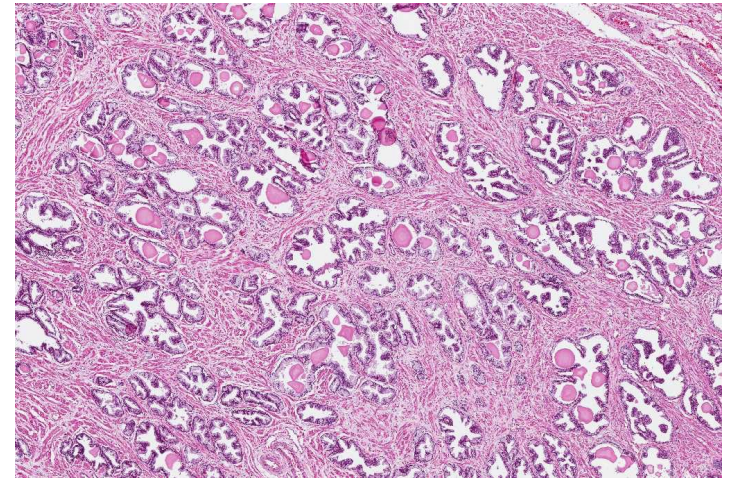
- Prostate gland.

Q2: What is the lining epithelium?

- Simple columnar or pseudostratified columnar epithelium.

Q3: Identify the labeled structures

- A: Copora amylacea.
- B: Fibromasculular band.



IT'S NOT ABOUT  
HOW BAD YOU  
WANT IT...

IT'S ABOUT HOW HARD  
YOU'RE WILLING  
**TO WORK FOR IT**

Thank you for checking our work, farewell Histology.

---

**Done By:** Ouf Al Oufi

**Edited & Revised By:** Amal Afrah