



Anatomy Practical Reproductive Block 434

Before going through the contents, make sure you check this [CORRECTION FILE](#) first

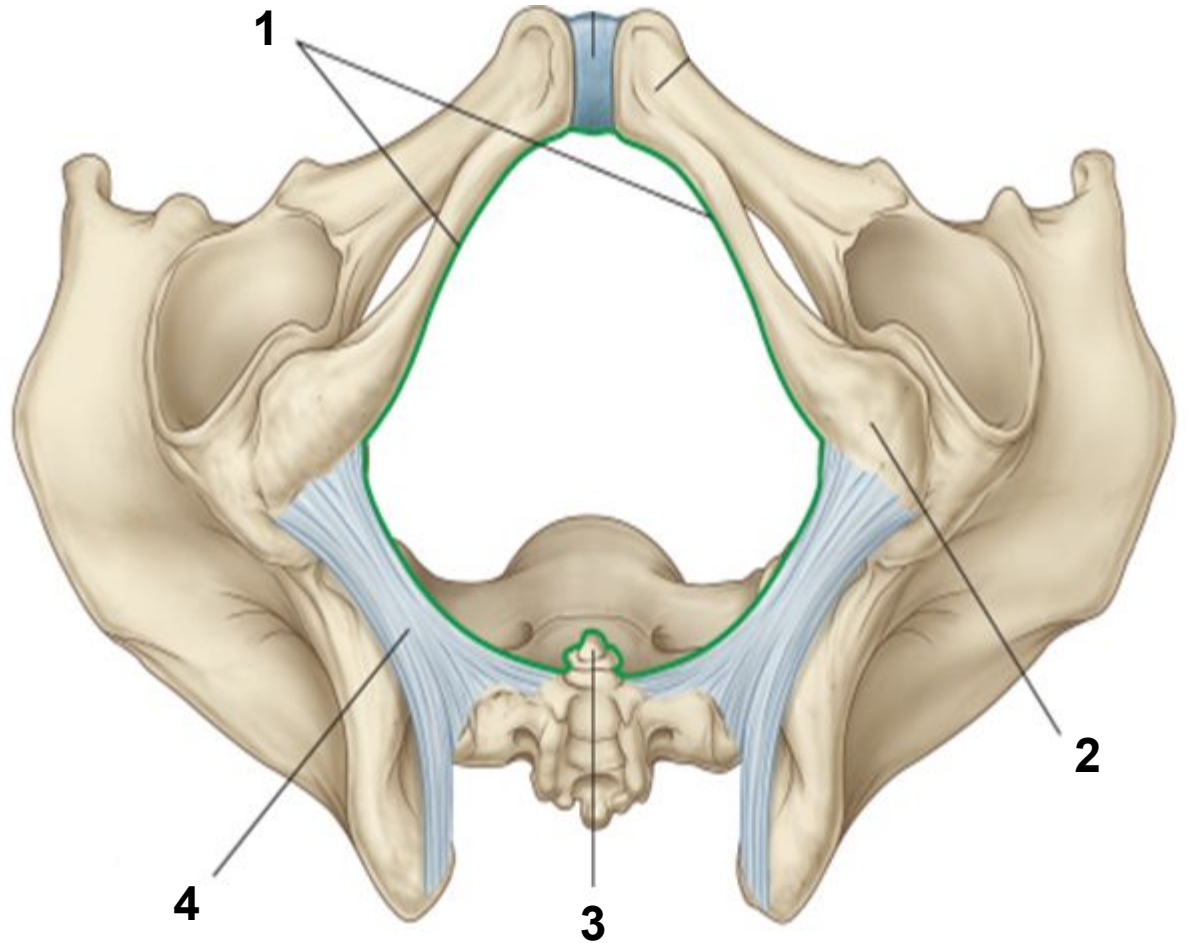
Identify the labeled structures:

1-Ischiopubic arch

2-Ischial tuberosity

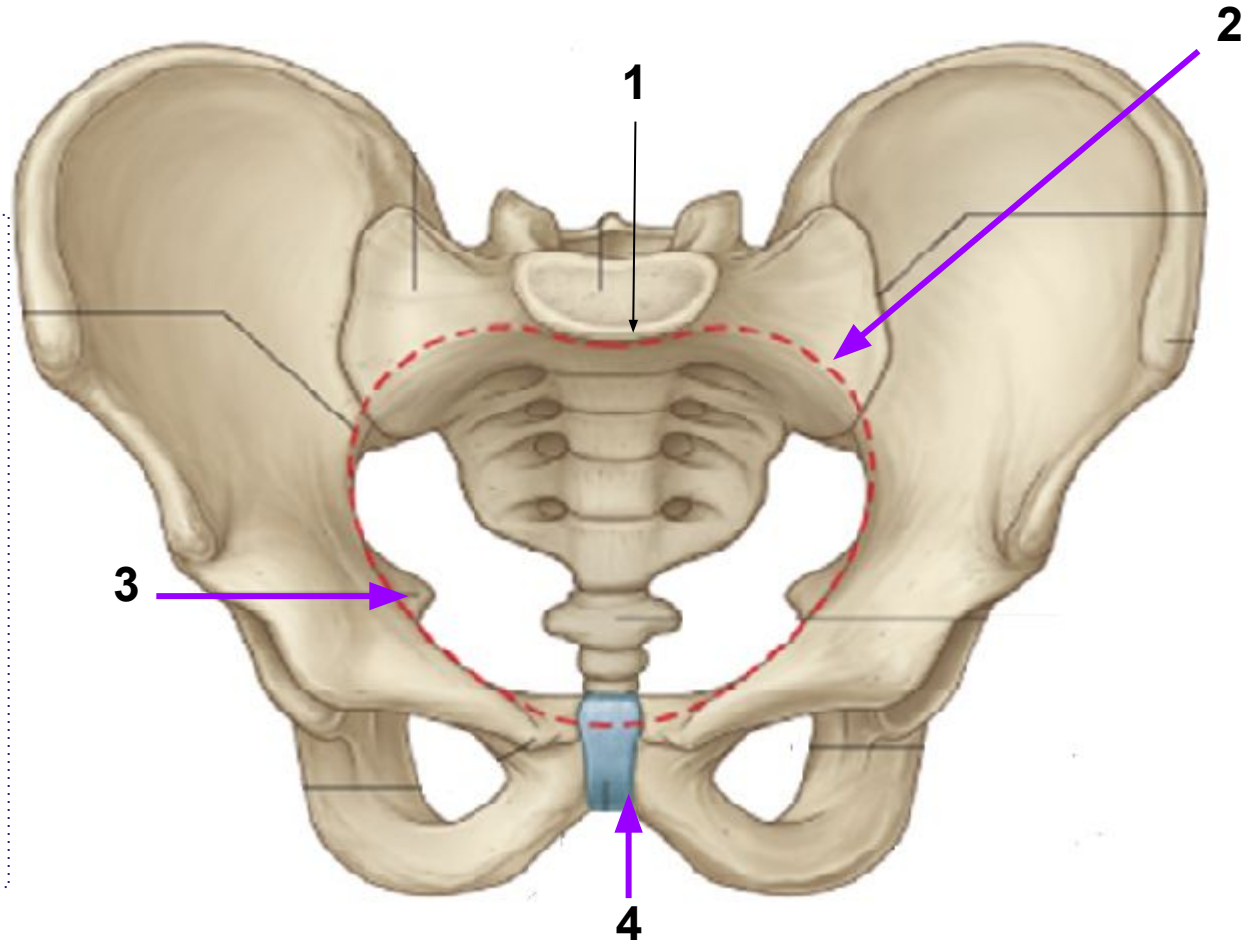
3-Coccyx

4-Sacrotuberous ligament



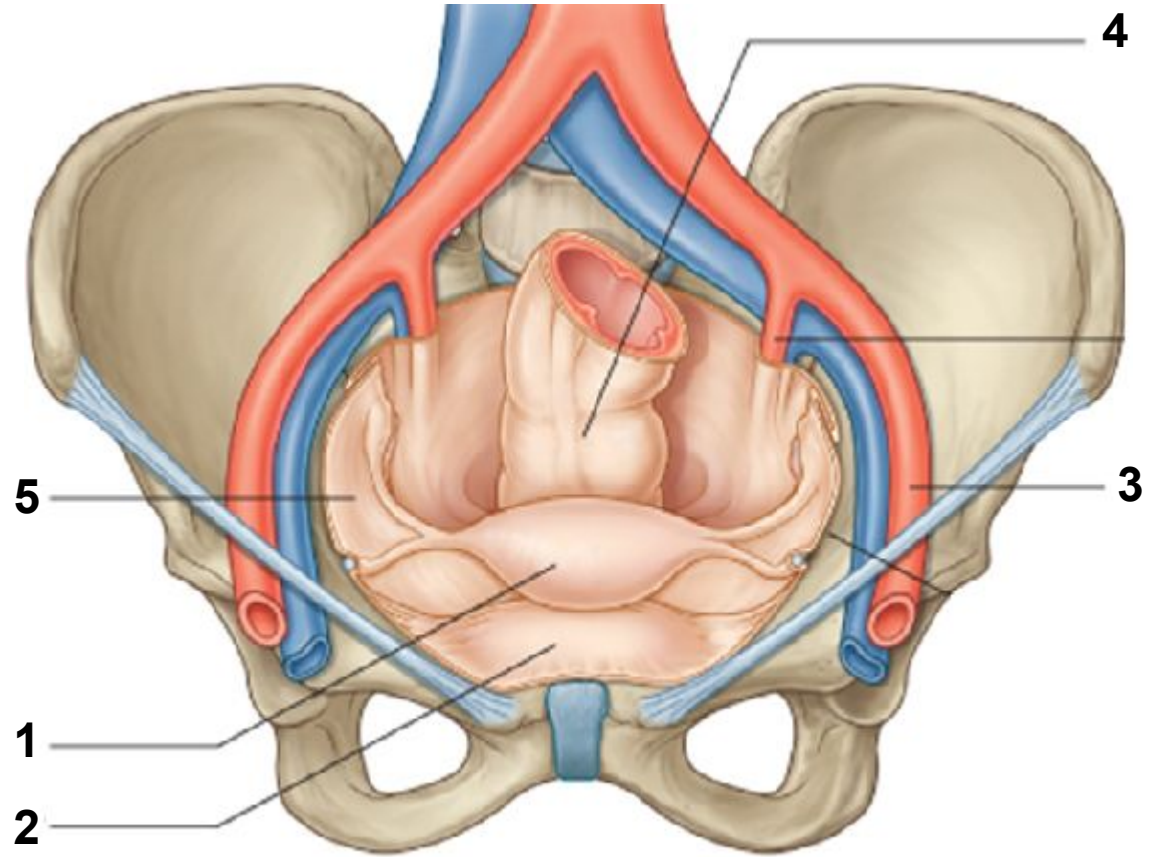
Identify the structures of the pelvic inlet:

- 1-Promontory of sacrum
- 2-Ala of sacrum
- 3-Iliopectineal line (arcuate line)
- 4-Symphysis pubis



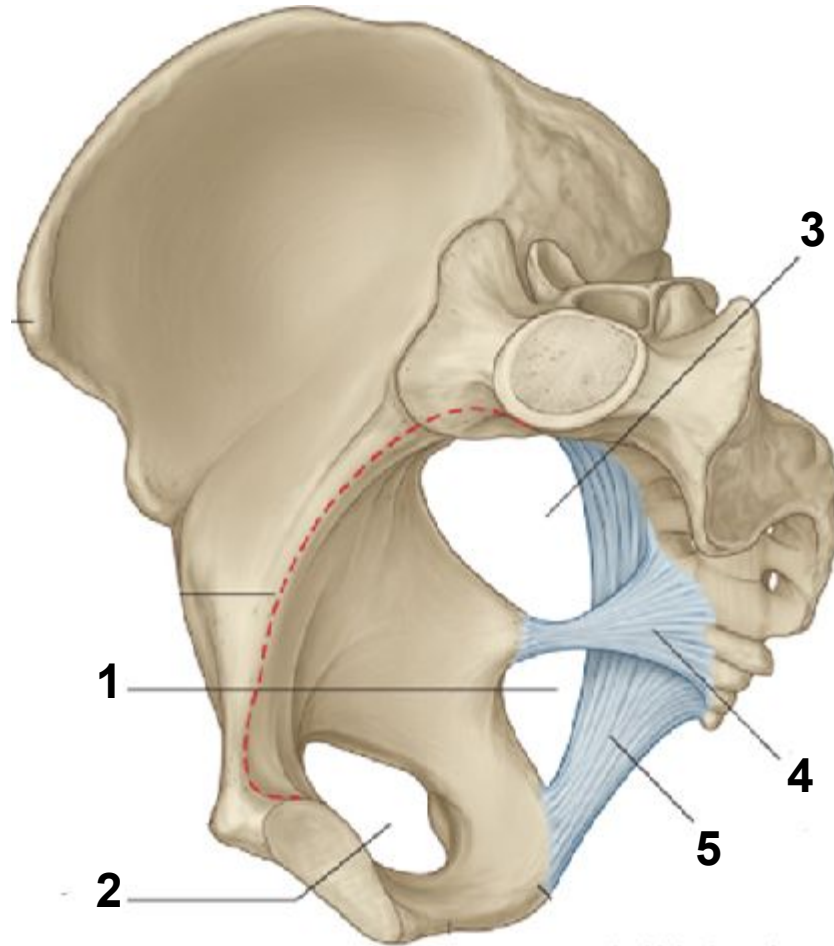
Identify the labeled structures:

- 1-Uterus
- 2-Urinary bladder
- 3-External iliac artery
- 4-Rectum
- 5-Broad ligament



Identify the labeled structures:

- 1-Lesser sciatic foramen
- 2-Obturator foramen
- 3-Greater sciatic foramen
- 4-Sacrospinous ligament
- 5-Sacrotuberous ligament



Identify the labeled structures (sagittal section):

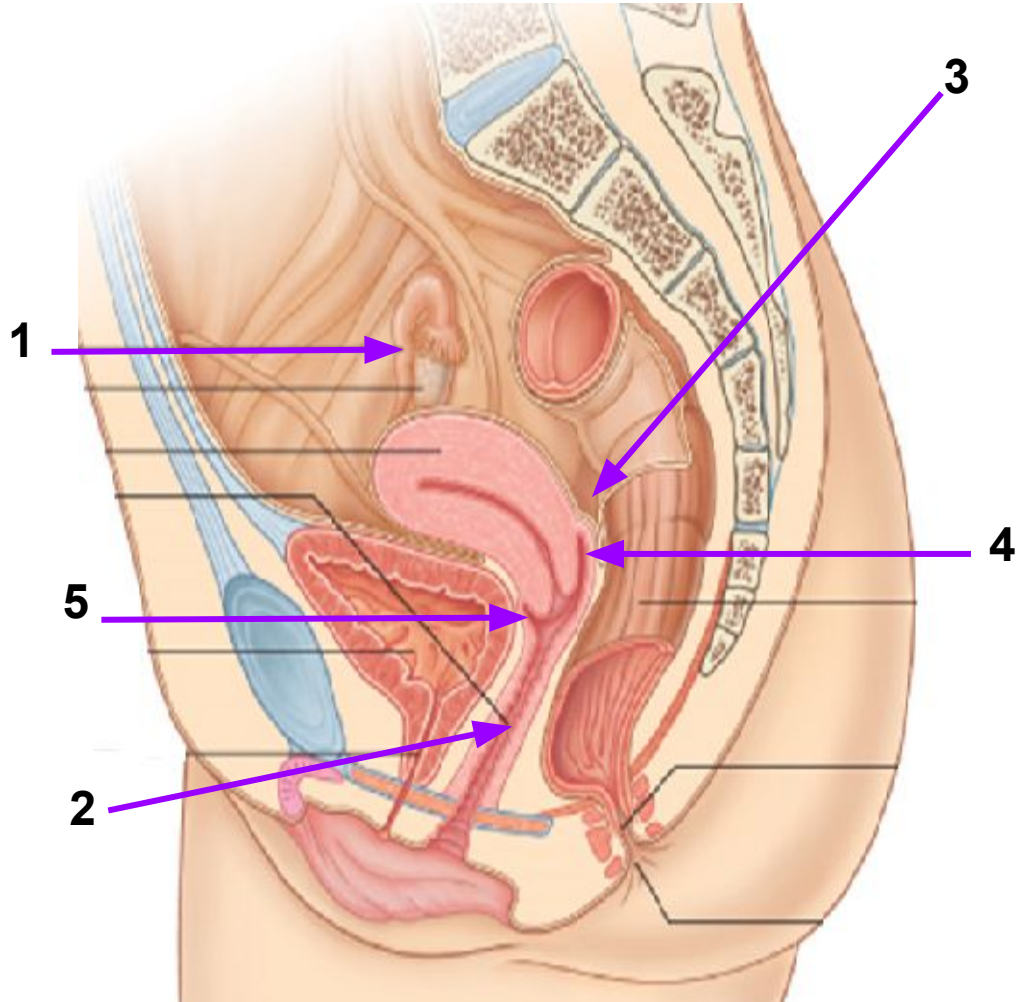
1-Fallopian tube

2-Vagina

3-Rectovaginal or Douglas pouch

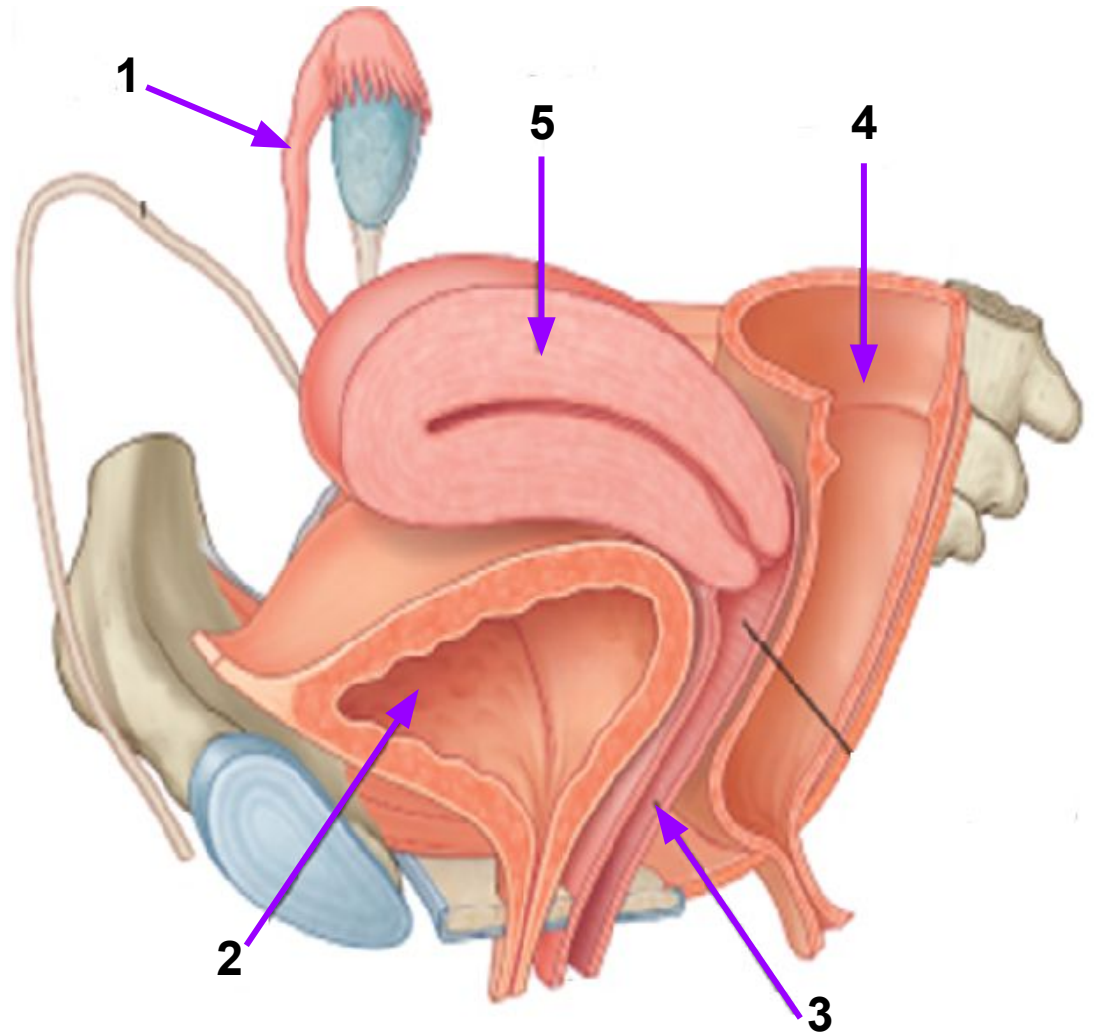
4-Posterior vaginal fornix

5-Anterior vaginal fornix



Identify the labeled structures:

- 1-Fallopian tube
- 2-Urinary bladder
- 3-Vagina
- 4-Rectum
- 5-Uterus



Identify the labeled structures:

1/ Anterior vaginal fornix

2/ Cervix.

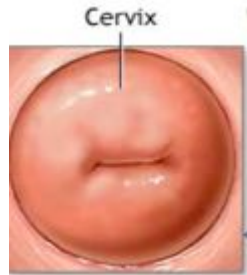
3/ External os.

According to pregnancy, What Description you give to this female?

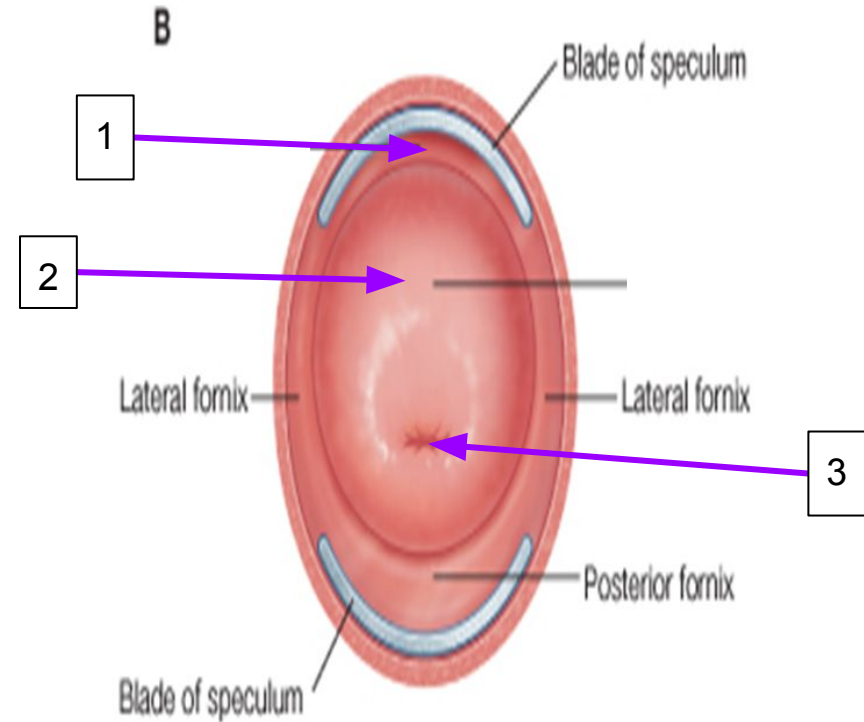
Multiparous



Nulliparous



Multiparous



Identify the labeled structures:

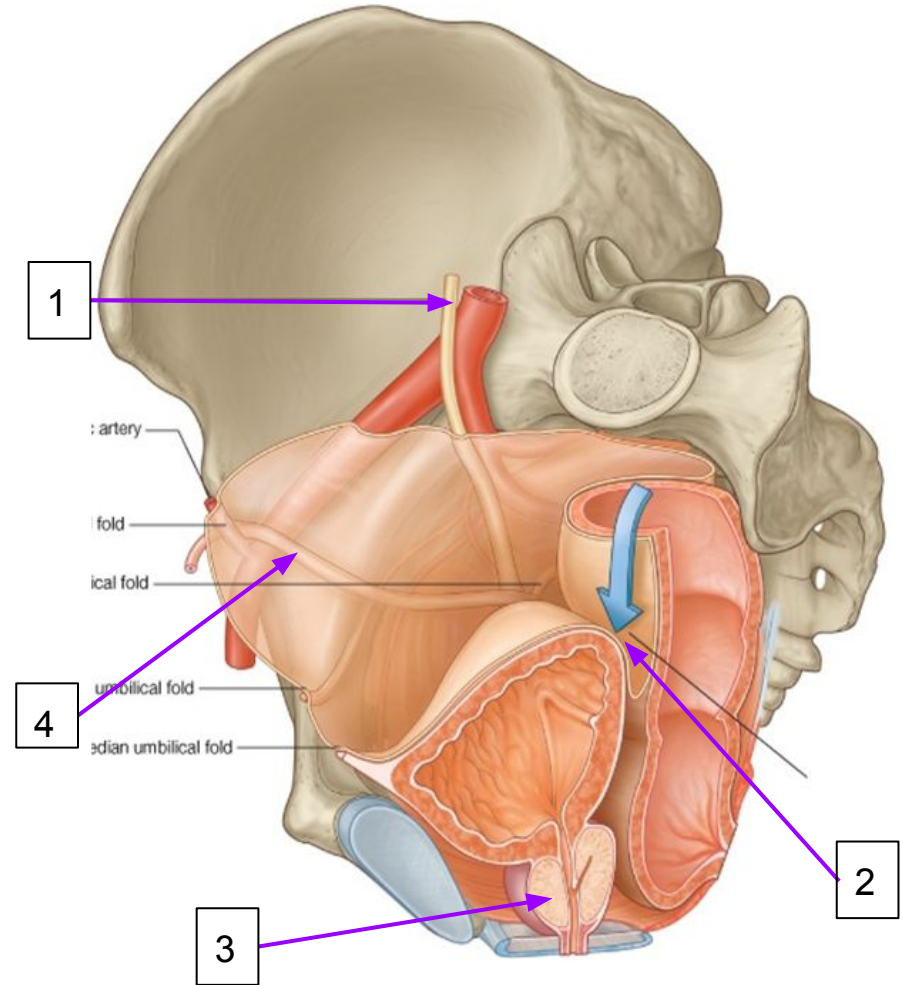
1-Ureter.

2-Rectovesical pouch.

(don't say Douglas pouch in male)

3-Prostate gland.

4-Vas deference.



**Identify the labeled structures
(sagittal section):**

1-Cervical canal.

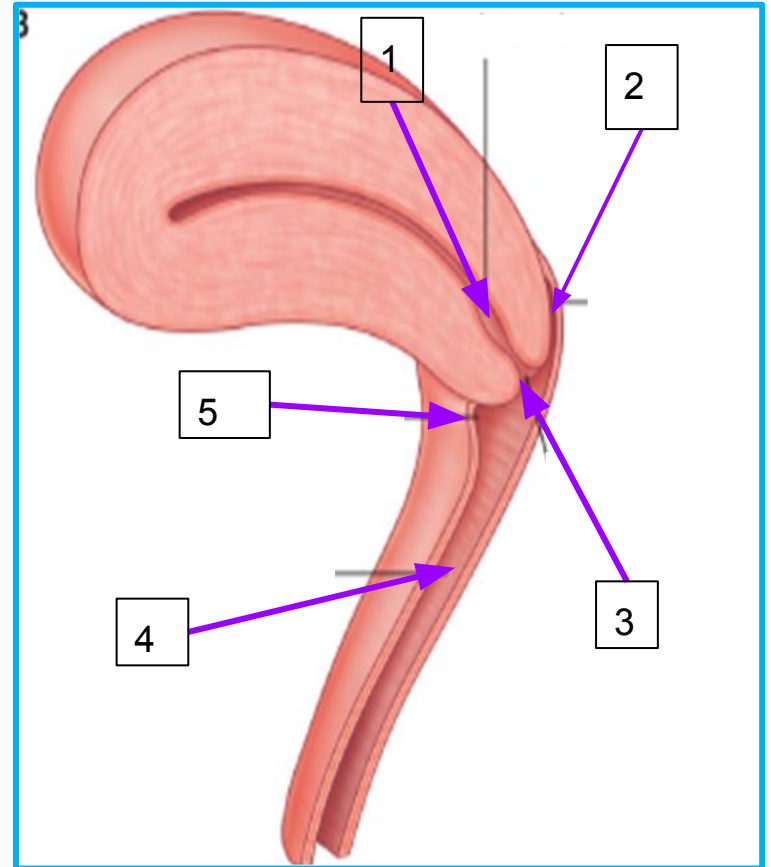
2-Posterior fornix.

Deeper Than Anterior fornix

3-External os.

4-vagina.

5-Anterior fornix.



Identify the labeled structures:

1-Tunica vaginalis.

(Peritoneal covering)

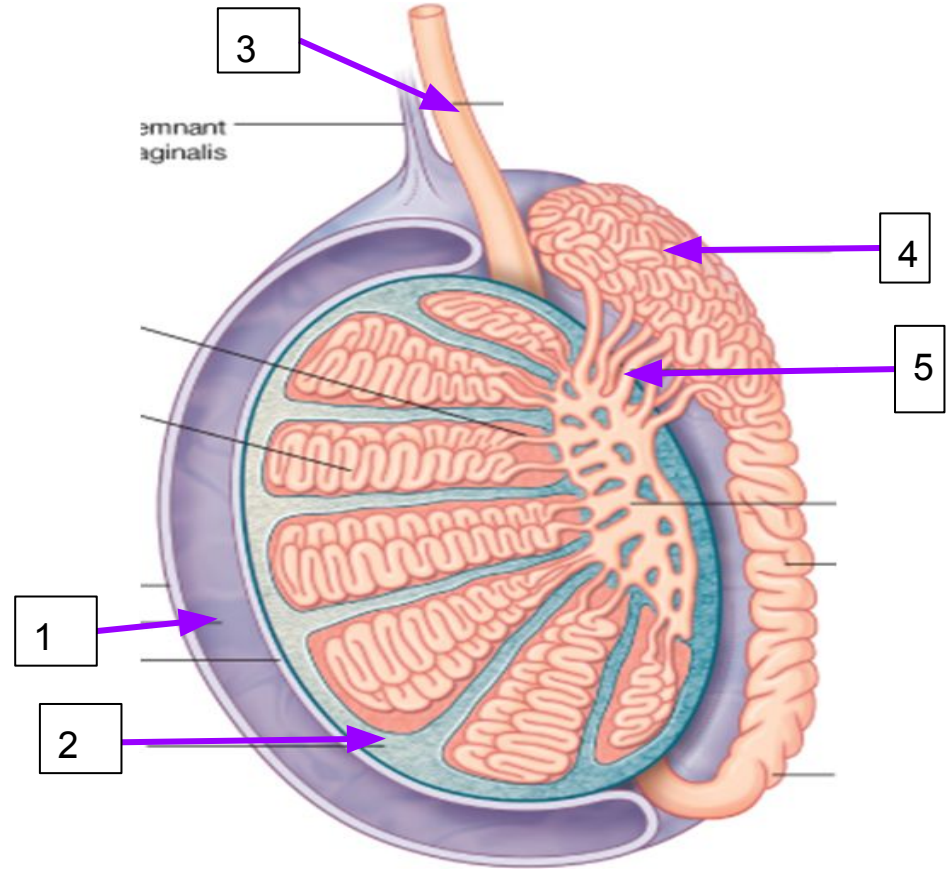
2-Tunica albuginea.

(whitish Fibrous capsule)

3-Vas deference.

4-Head of the epididymis.

5-Efferent ductules or vasa efferentia.



Identify the labeled structures

(frontal section):

1-Fundus.

2-Body.

3-Cervix.

4-Vagina.

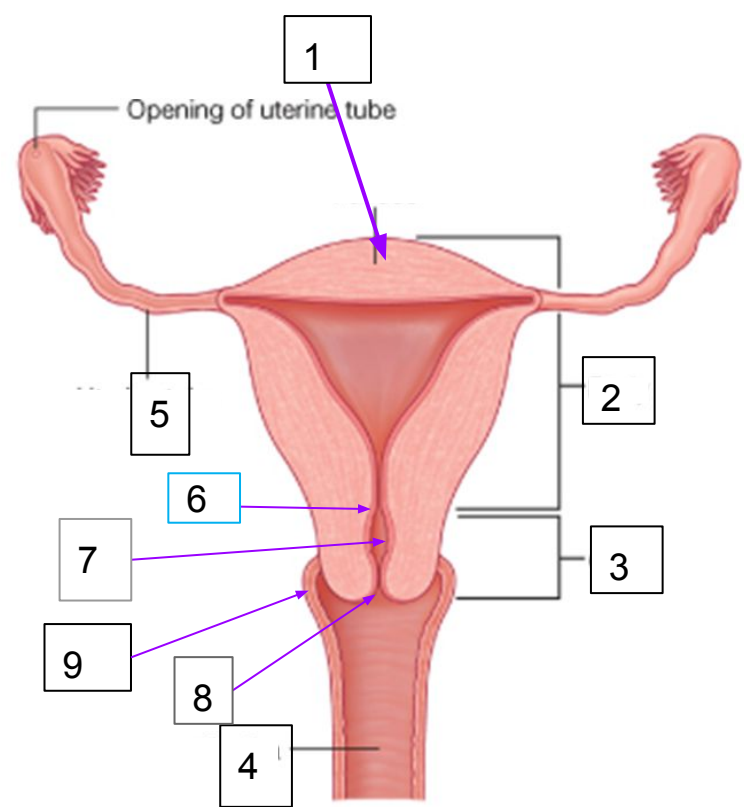
5-Fallopian tube

6- Internal os

7-Cervical canal

8- External os

9-lateral vaginal fornix



ختامية

تم بحمد الله اتمام مادة التشريح التأسيسية.

اسال الله ان ينفعنا بما علمنا ويجعله شفيعا لنا لا علينا.

بصفتي ليدر لمادة التشريح طوال هذه السنة الدراسية:

اقدم شكري لكل عضو من اعضاء فريق التشريح و من قدموا اقتراحاتهم ورائهم البناءة او شاركوني خبراتهم, واتمنى ان يكون الجميع قد انتفع مما قدمت انا وفريقي خلال هذا العام وبعضا من العام الماضي.

واخيرا:

ان اصبنا فمن الله وان اخطأنا فمن انفسنا والشيطان.

THANK YOU FOR CHECKING OUR WORK
GOOD LUCK DOCTORS



DONE BY:

ندى العمري
الهام الغامدي
نجلاء الرباح