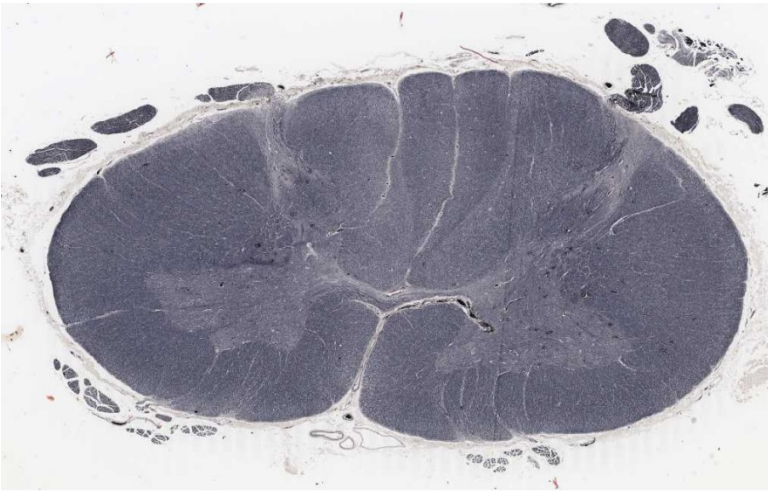
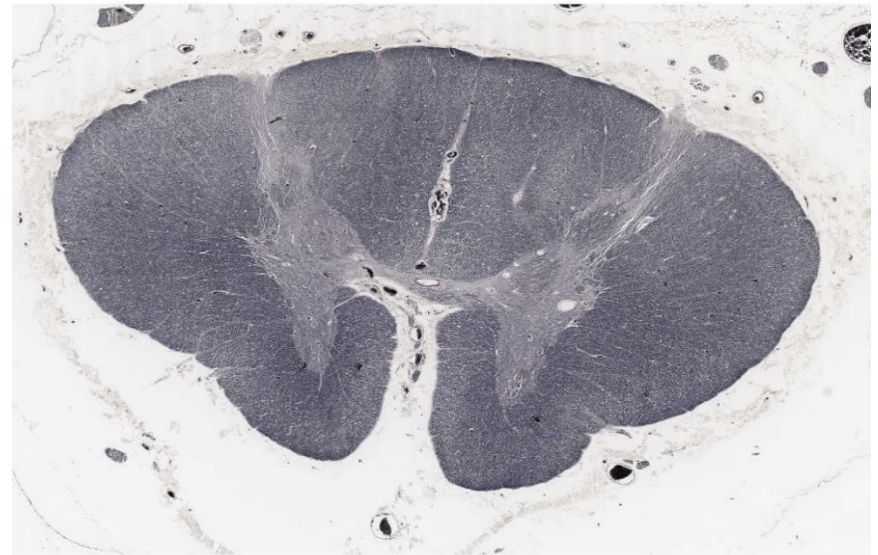


# Nervous System

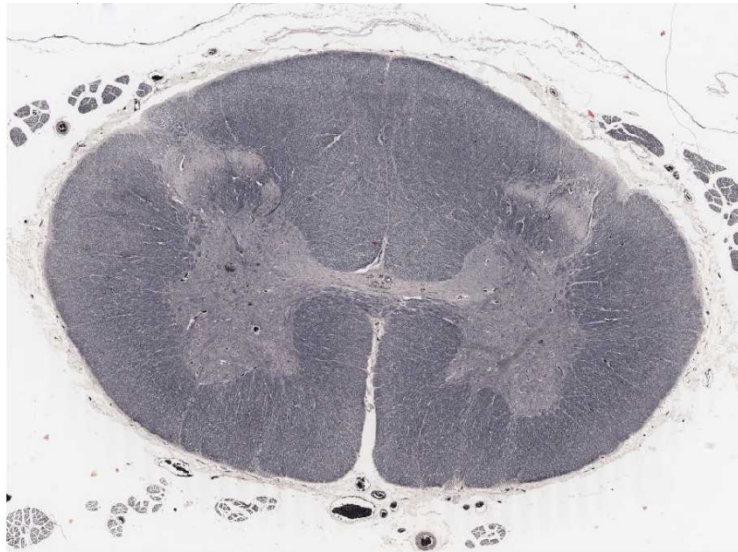
Practical pictures



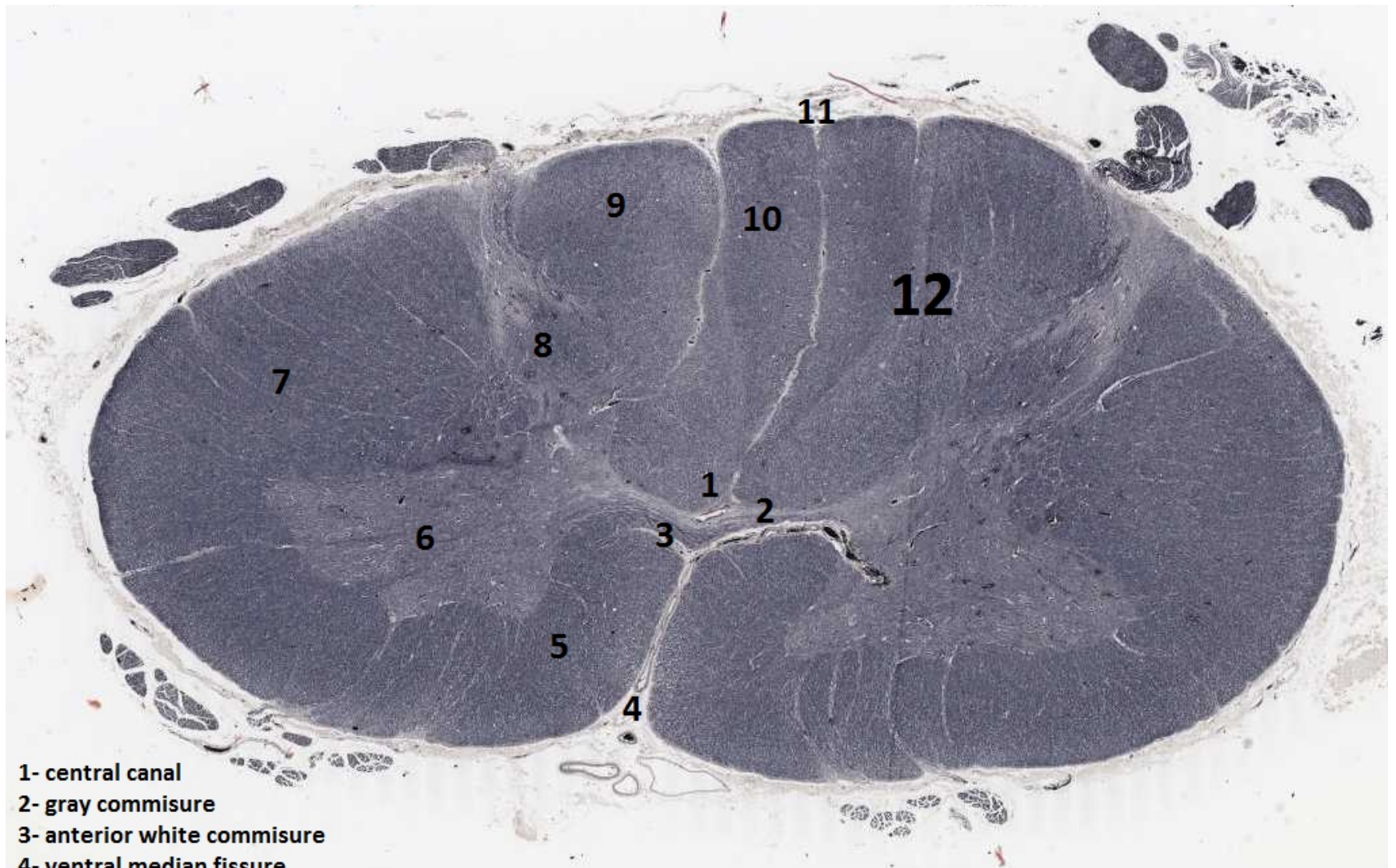
Cervical Spinal Cord



Thoracic Spinal Cord

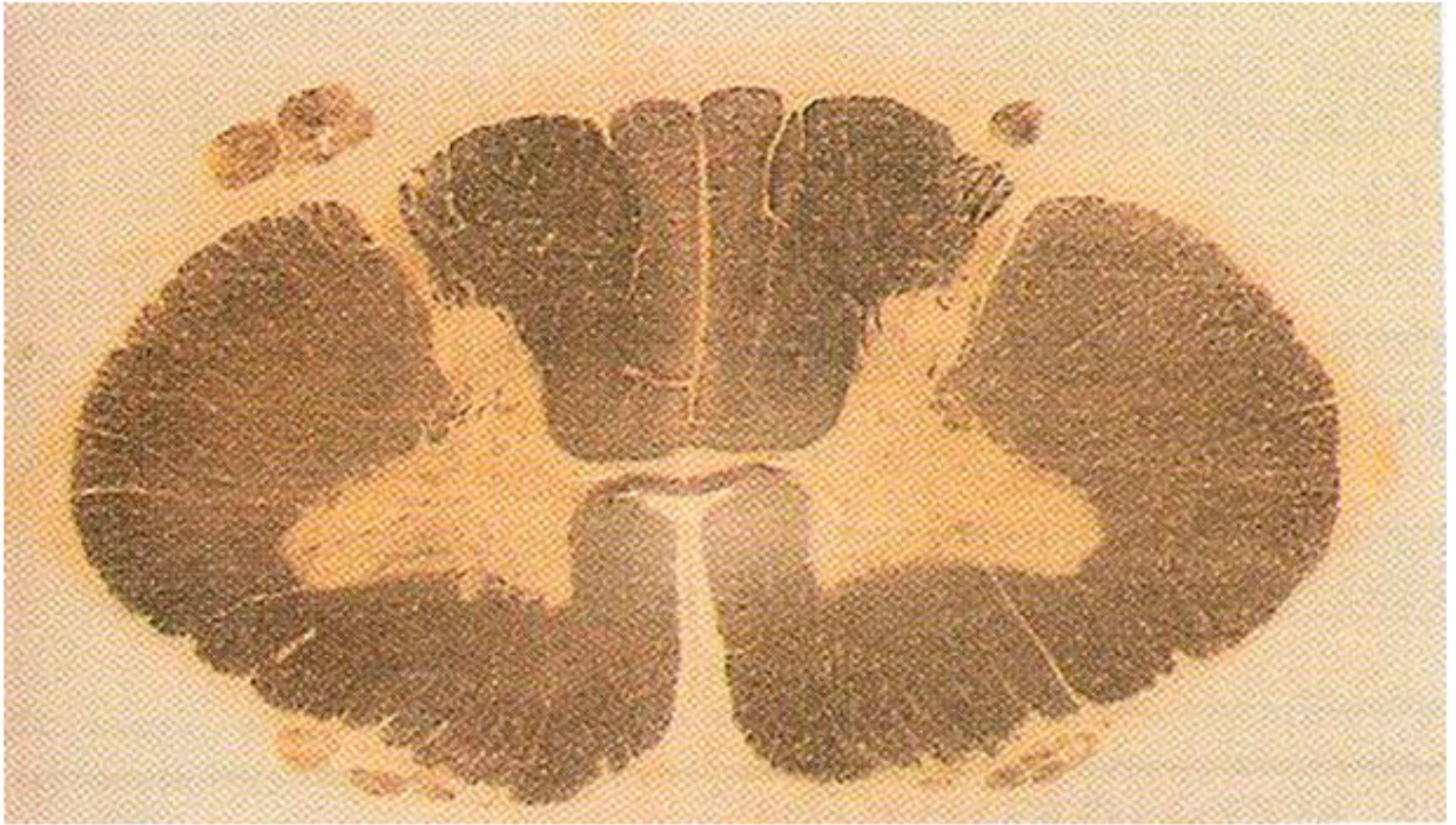


Lumbar Spinal Cord

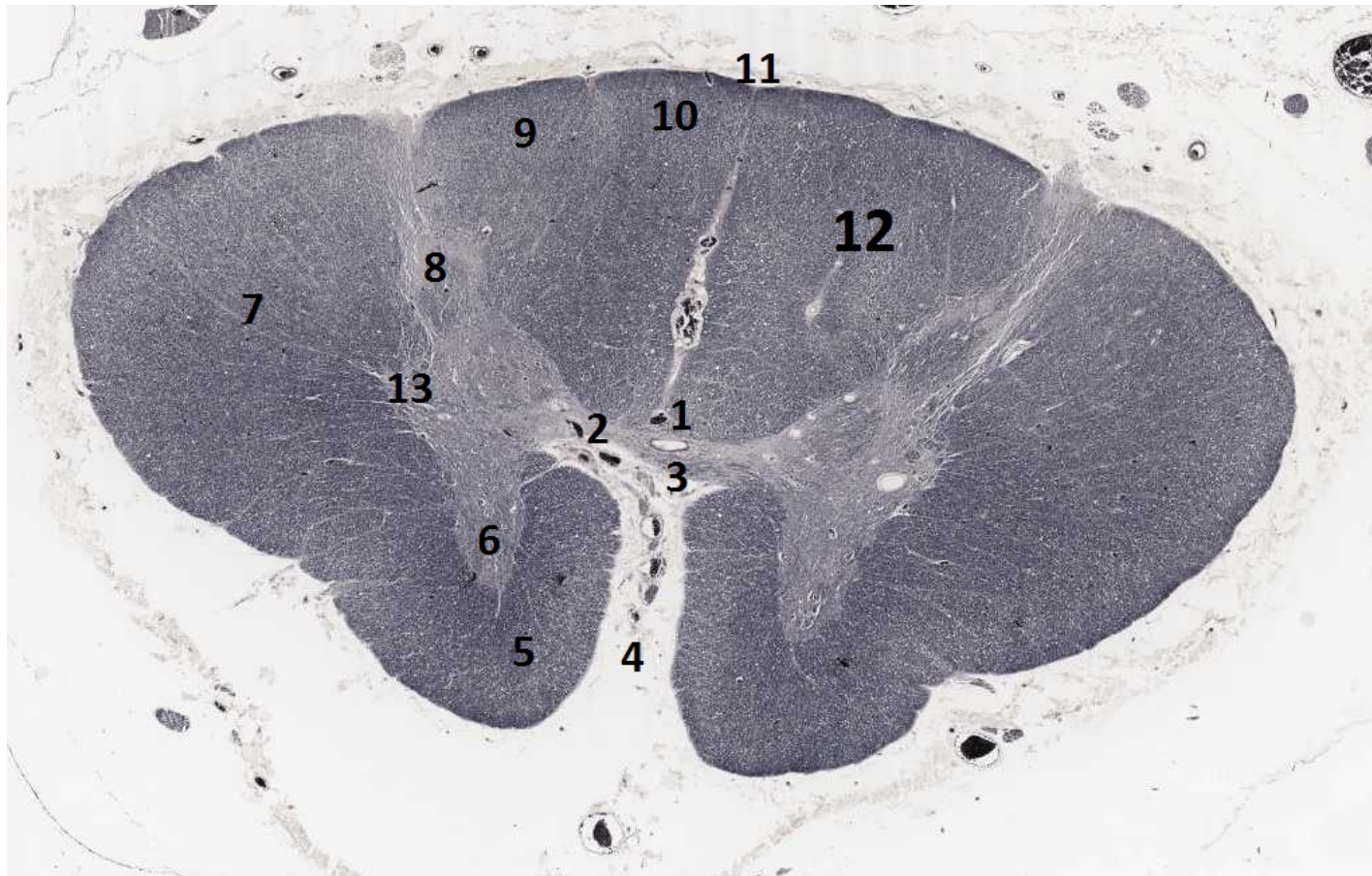


- 1- central canal
- 2- gray commissure
- 3- anterior white commissure
- 4- ventral median fissure
- 5- anterior white column
- 6- anterior gray horn
- 7- lateral white column
- 8- posterior gray horn
- 9- cuneate tract
- 10- gracile tract
- 11- dorsal median sulcus
- 12- posterior white column

## Cervical Spinal Cord

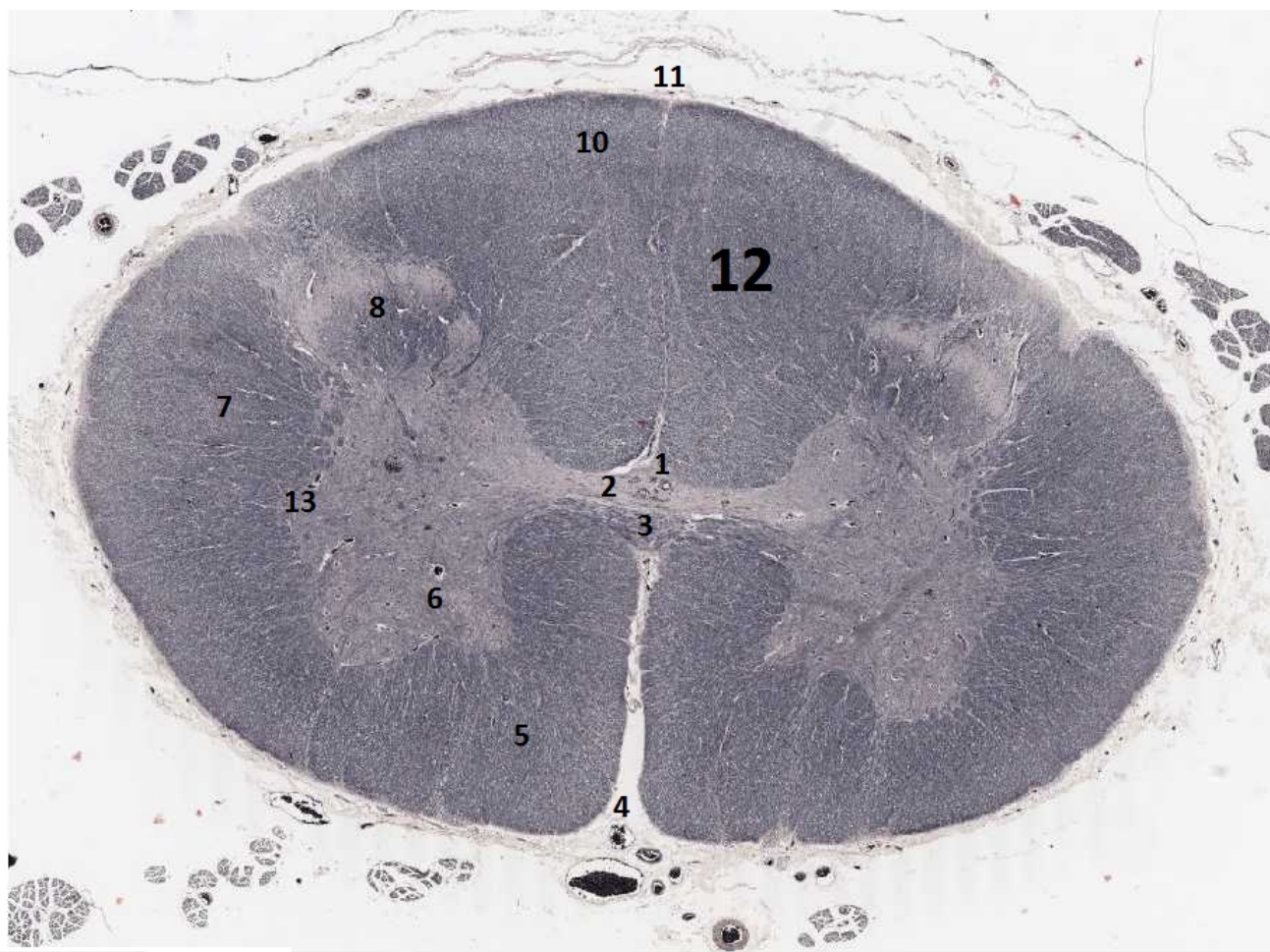


Cervical Spinal Cord



- 1- central canal
- 2- gray commissure
- 3- anterior white commissure
- 4- ventral median fissure
- 5- anterior white column
- 6- anterior gray horn
- 7- lateral white column
- 8- posterior gray horn
- 9- cuneate tract
- 10- gracile tract
- 11- dorsal median sulcus
- 12- posterior white column
- 13- lateral gray horn

## Thoracic Spinal Cord



- 1- central canal
- 2- gray commissure
- 3- anterior white commissure
- 4- ventral median fissure
- 5- anterior white column
- 6- anterior gray horn
- 7- lateral white column
- 8- posterior gray horn
- 9- cuneate tract "not found at this level"
- 10- gracile tract
- 11- dorsal median sulcus
- 12- posterior white column
- 13- lateral gray horn

## Lumbar Spinal Cord

**sensory tracts**

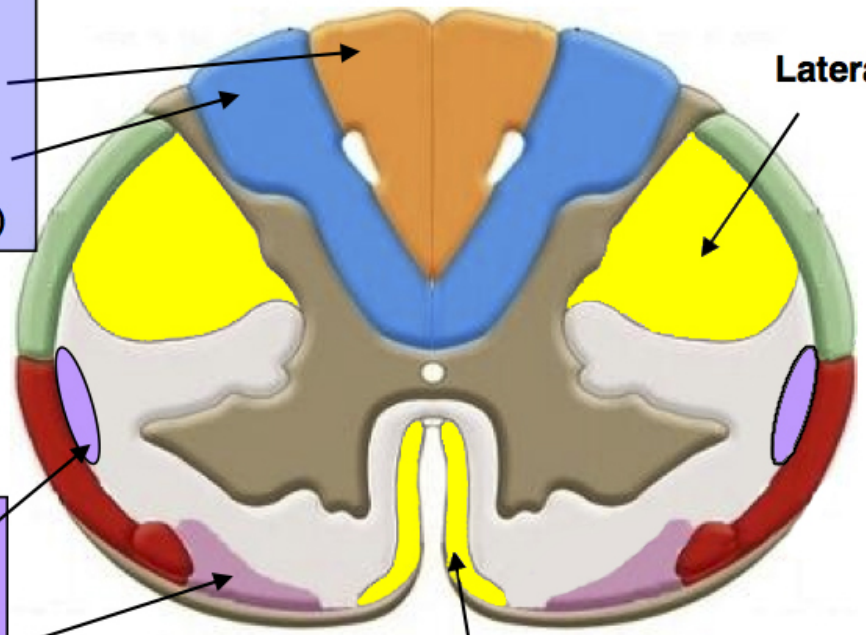
**motor tracts**

**touch,  
pressure,  
kinesthesia  
pathways**

**Dorsal  
(posterior)  
columns:**  
Gracilis (from leg)  
Cuneate (from arm)

**nociceptive  
(pain)  
pathways**

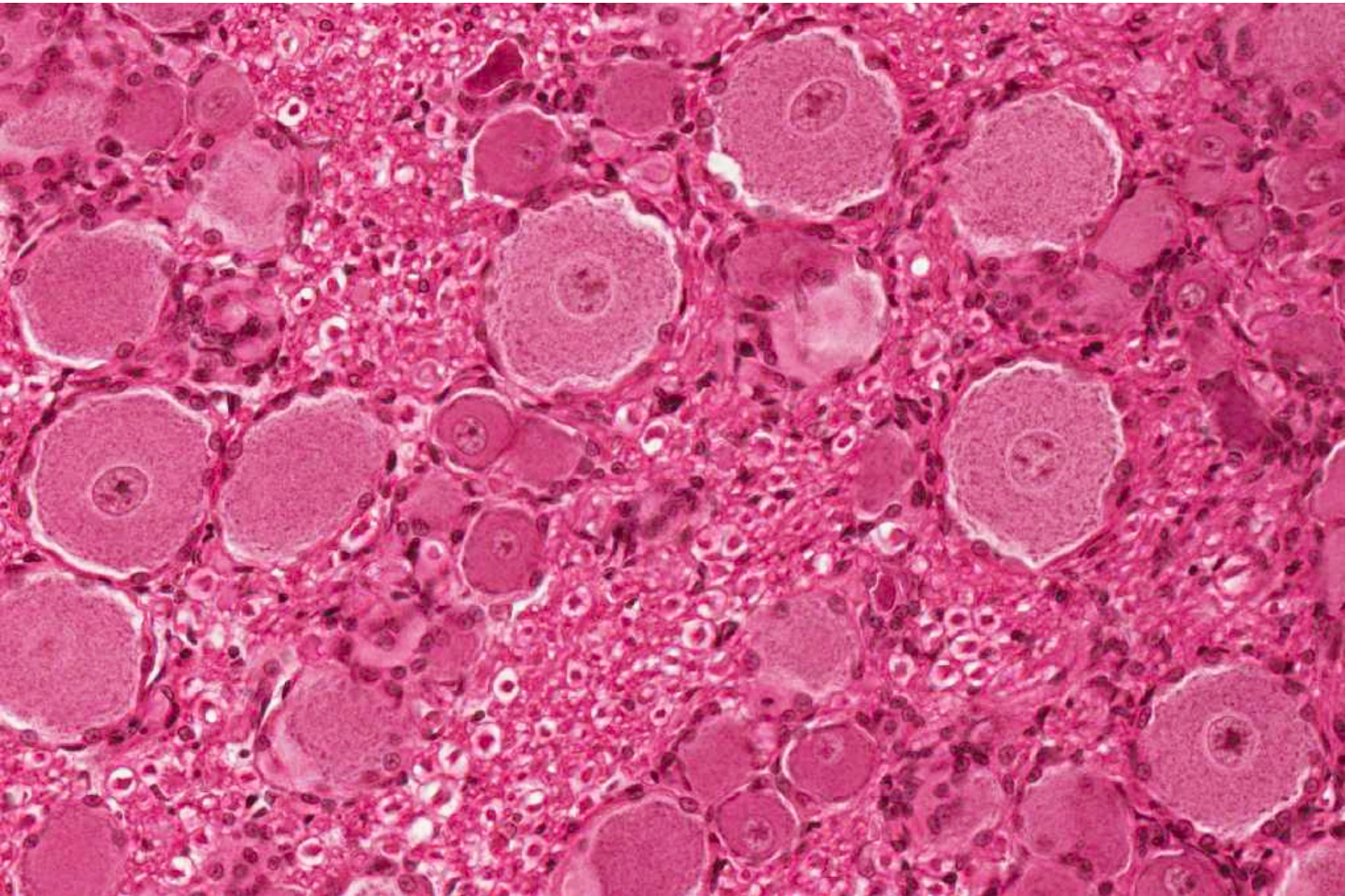
**Spinothalamic  
tracts:**  
posterior  
anterior



**Lateral corticospinal tract**

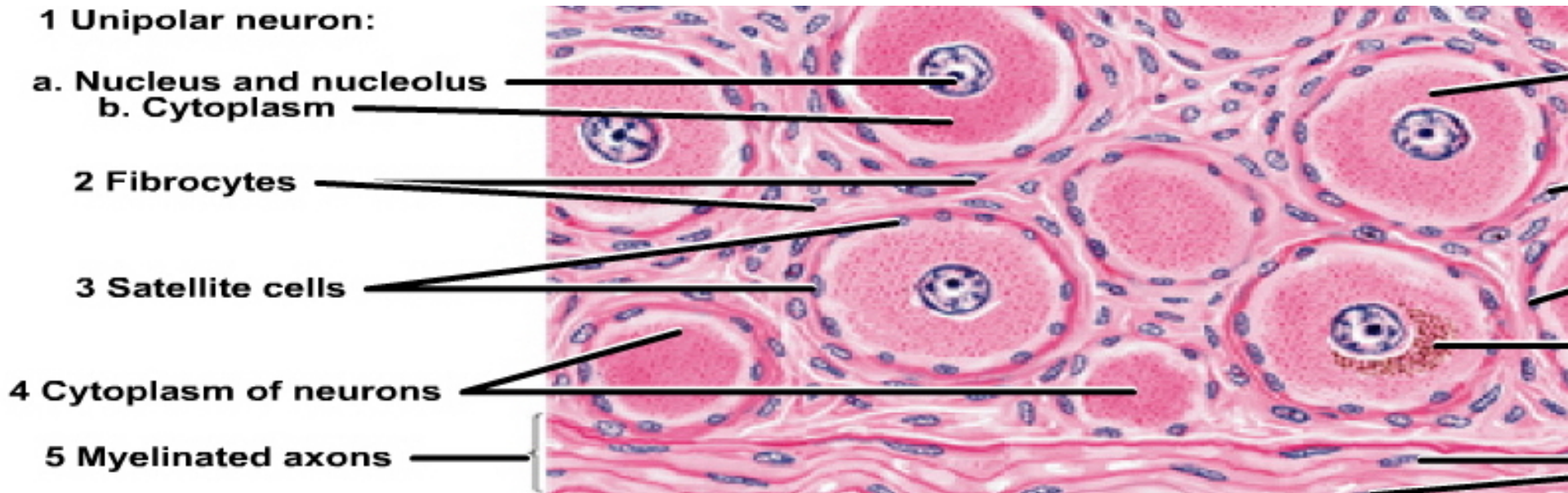
**Anterior corticospinal tract**

Cervical spinal cord: some tracts.

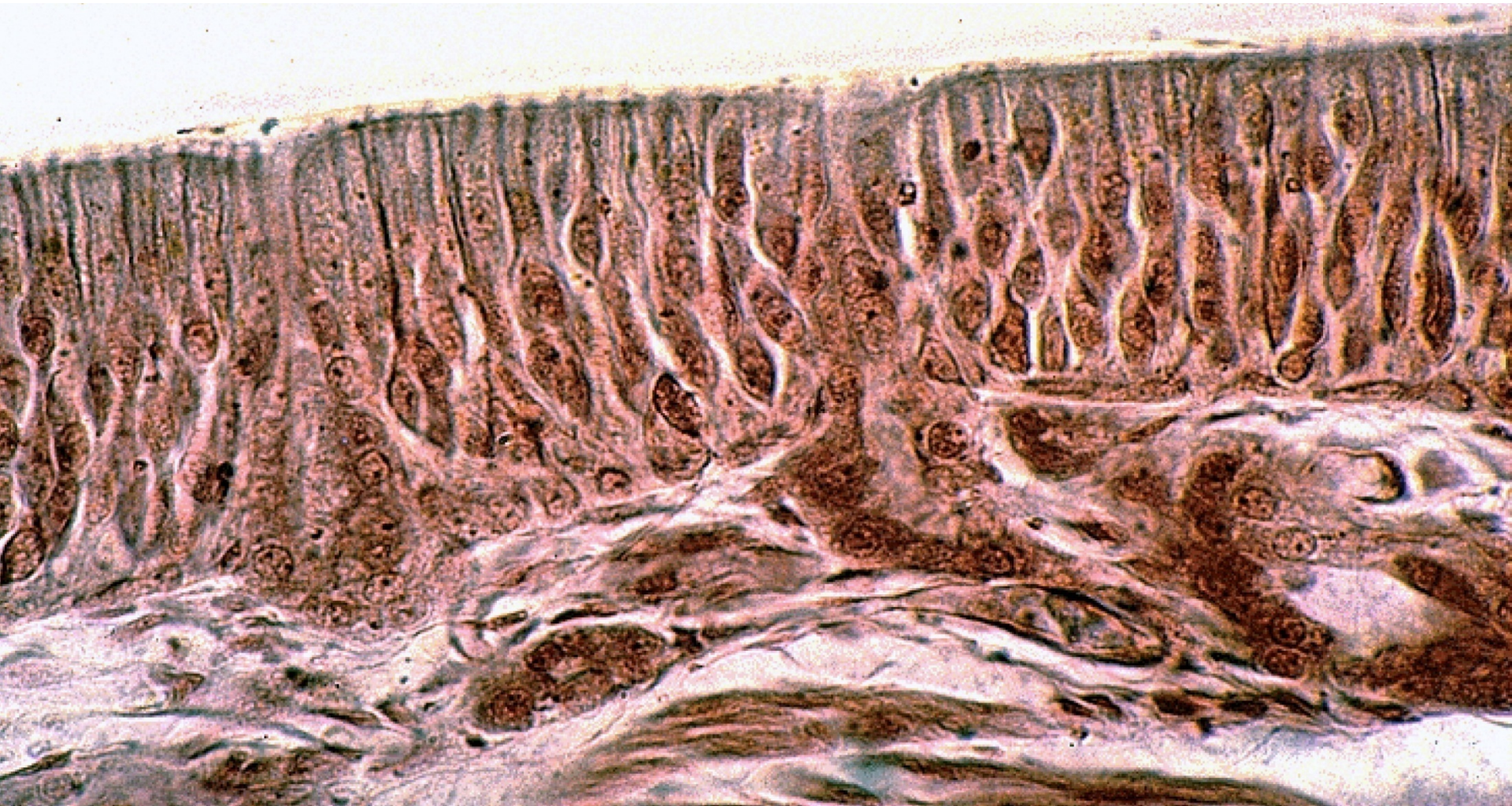


Unipolar neurons (in spinal ganglion)

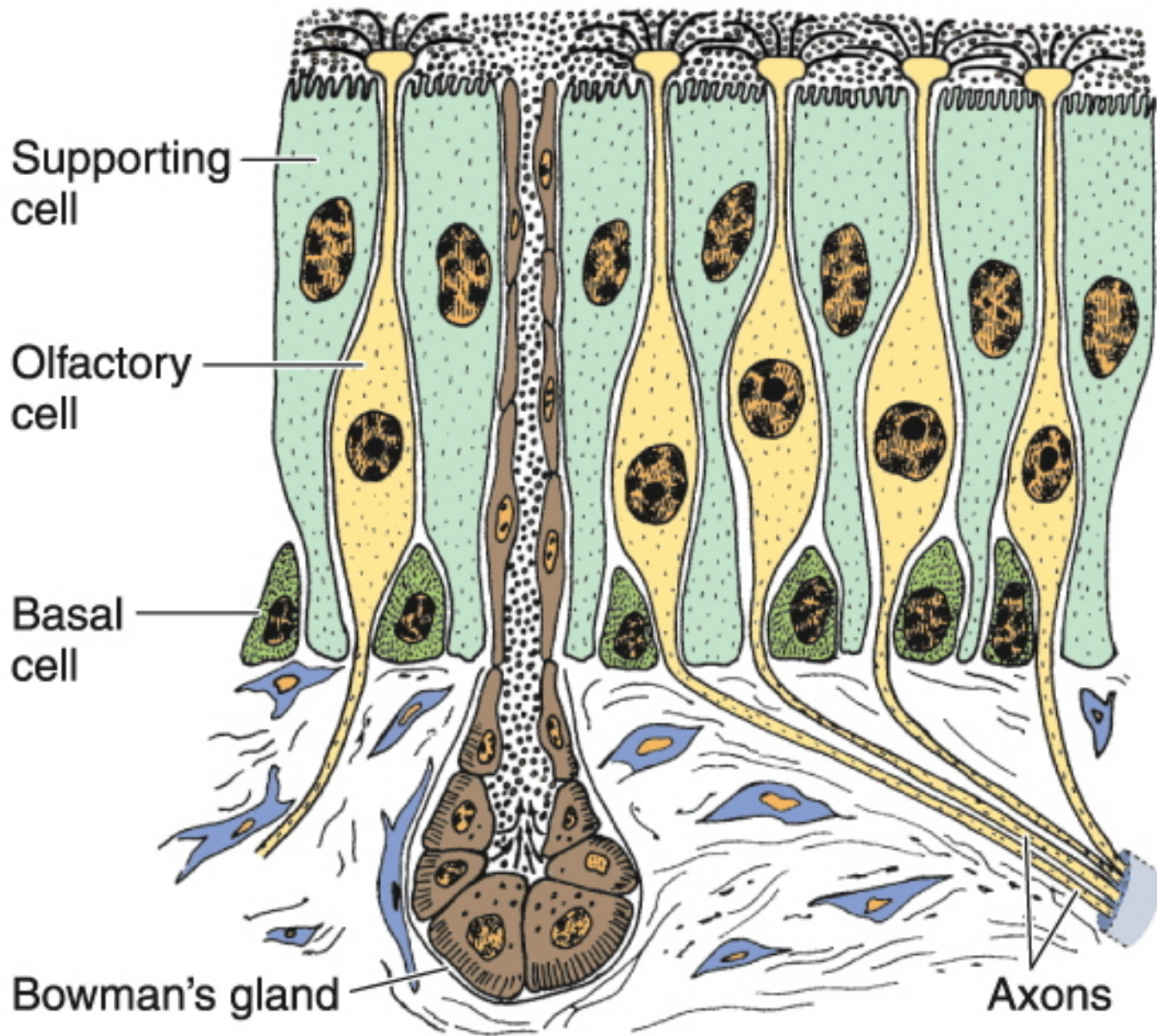




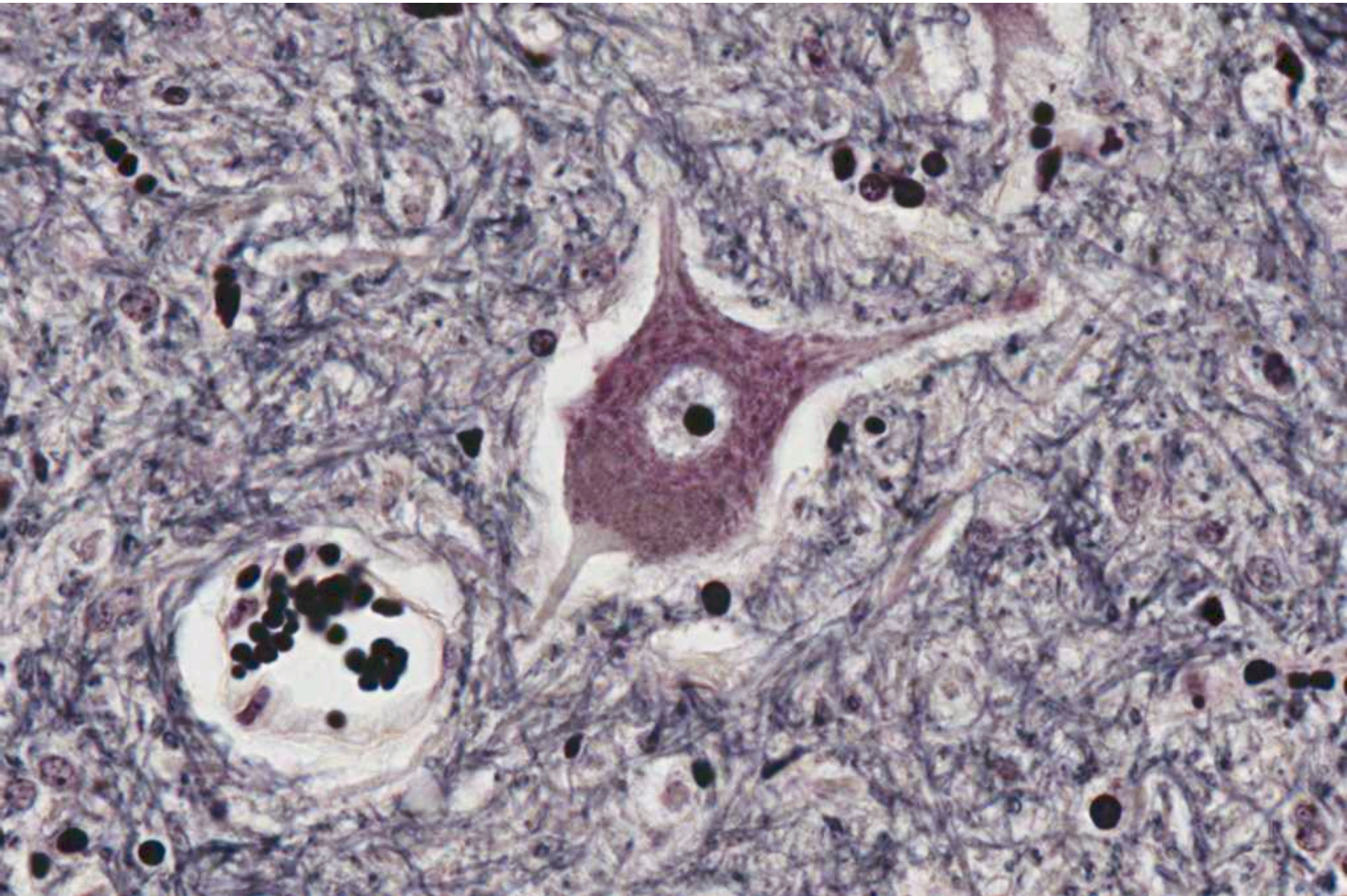
Unipolar neurons (in spinal ganglion) (diagram)



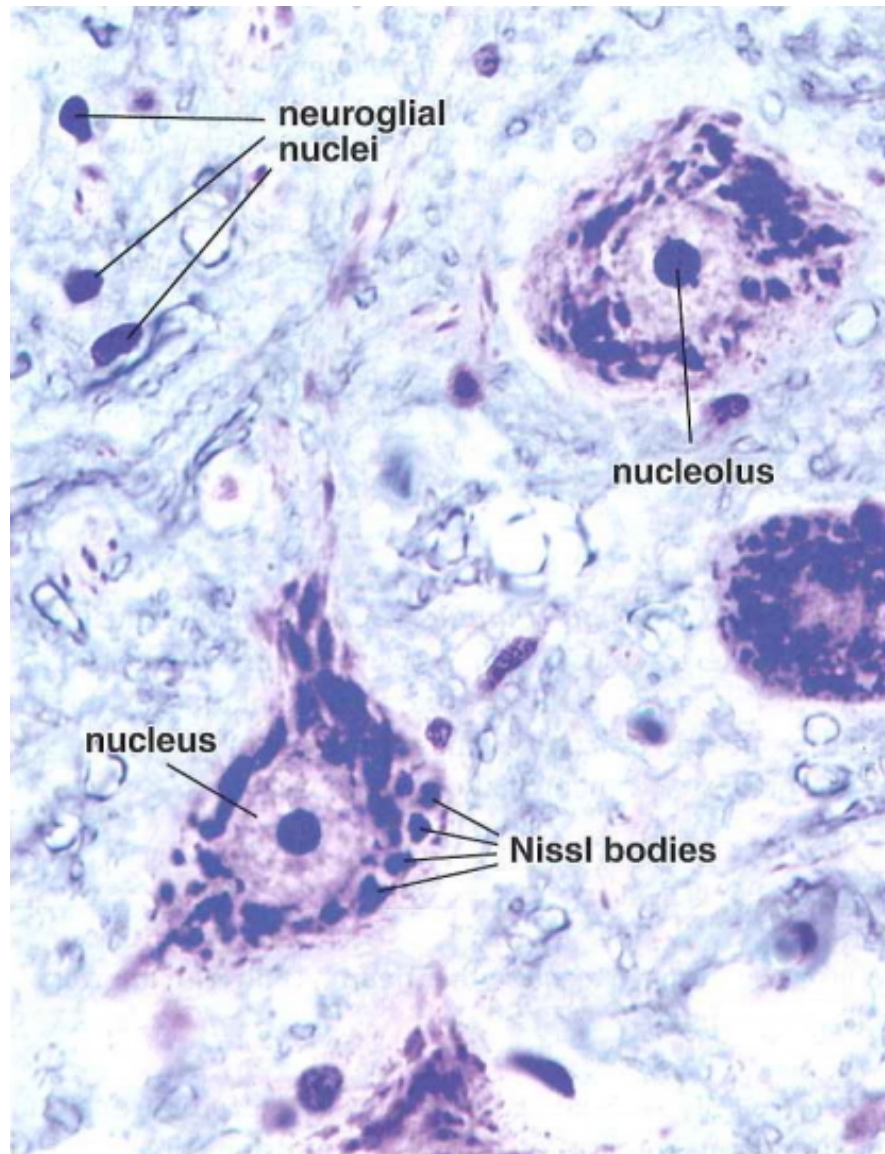
Bipolar neurons (in olfactory epithelium)



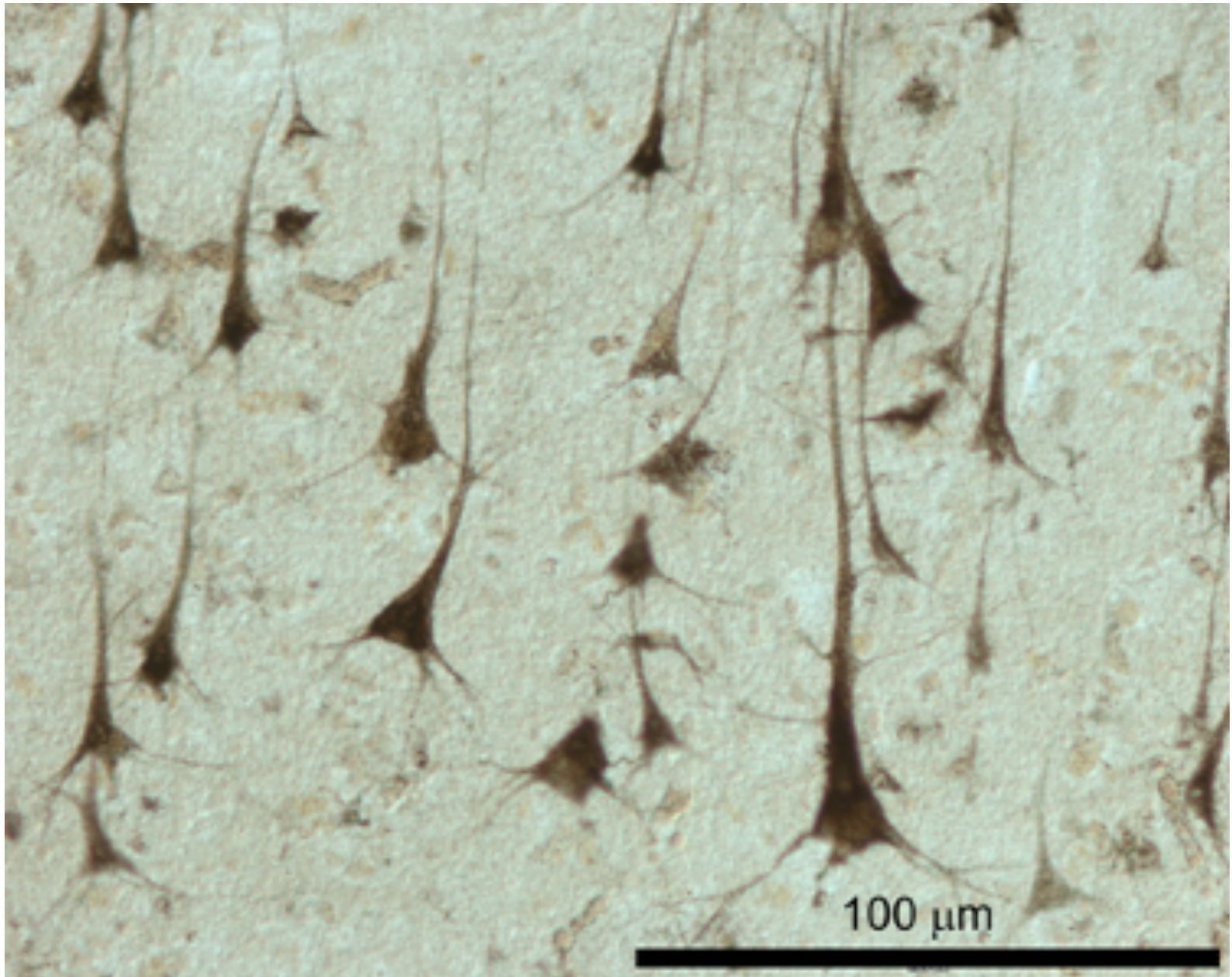
Bipolar neurons (in olfactory epithelium) (diagram)



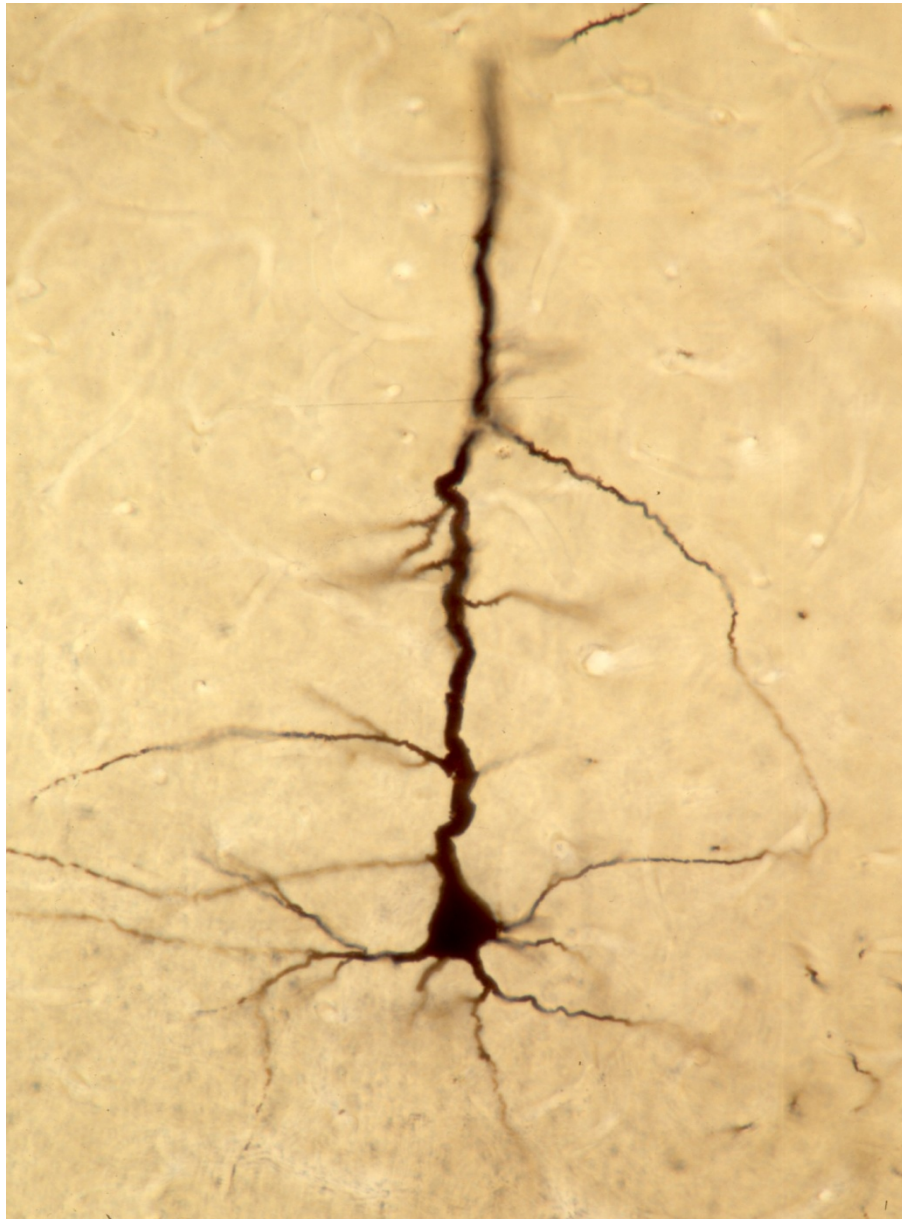
Multipolar stellate neuron (anterior horn cells of the spinal cord)



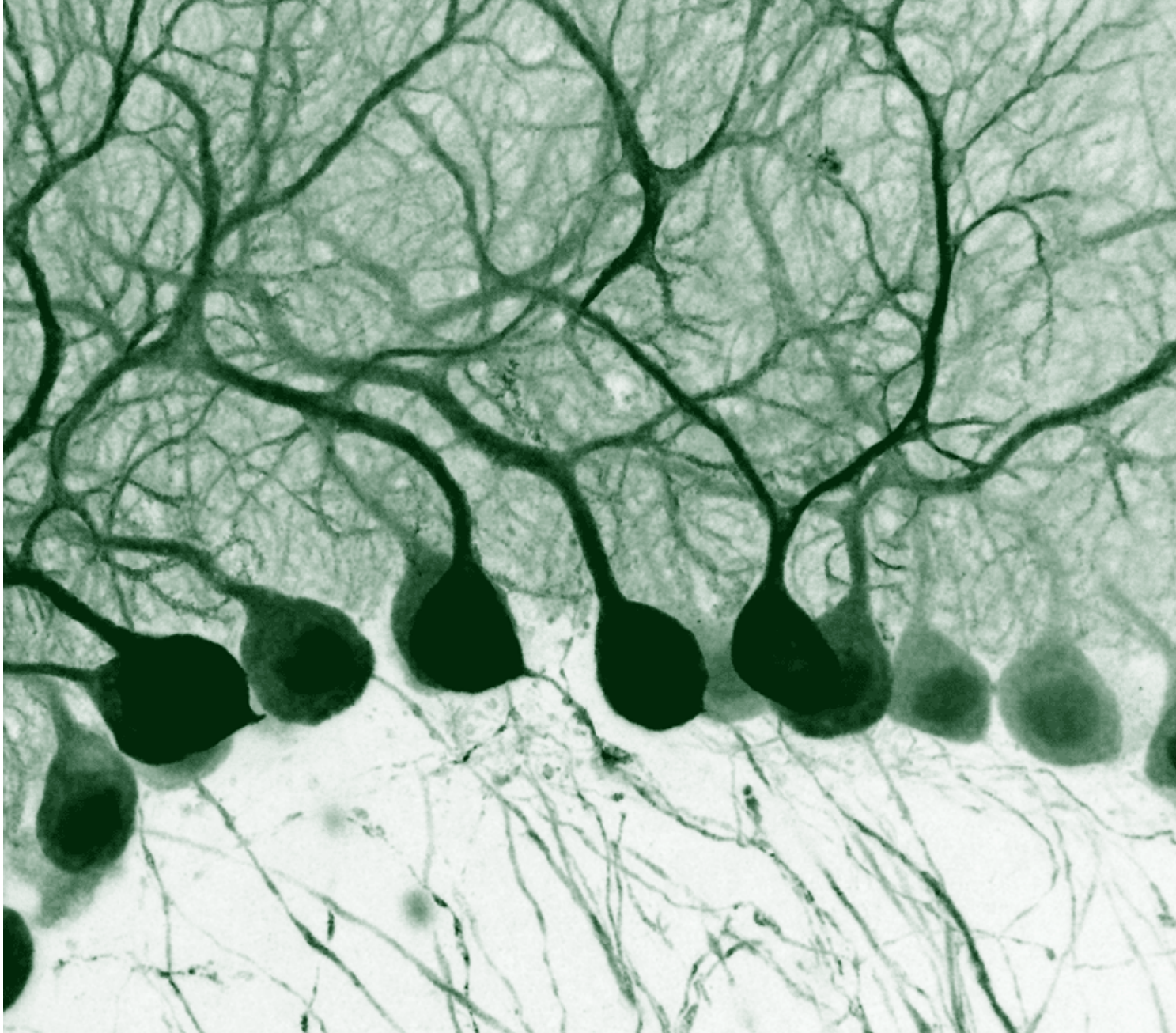
Multipolar stellate neurons (anterior horn cells of the spinal cord) and structure of the cell body of the neuron (nucleus, nucleolus, Nissl bodies)



Multipolar pyramidal neurons (in cerebrum)

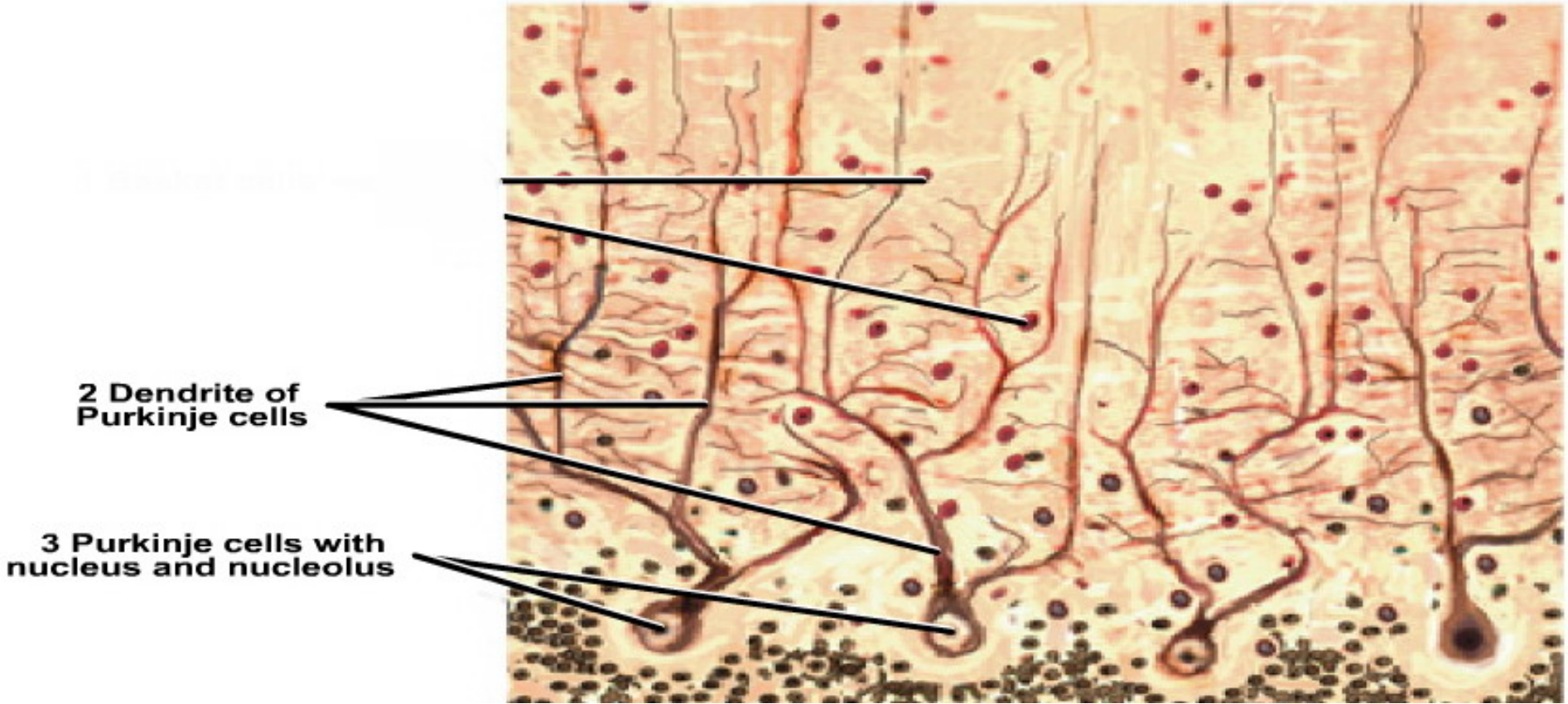


Multipolar pyramidal neuron (in cerebrum)



Multipolar pyriform neurons (Purkinje cells of cerebellum)





Multipolar pyriform neurons (Purkinje cells of cerebellum)