



Motivational Corner:

"Patience, persistence and perspiration make an unbeatable combination for success."

Please check out the [editing file](#) before starting the lecture.



Done by:
Fawzan ALOtaibi.
Edited by:
Areeb ALOgaiel.

Team leaders:
Areeb ALOgaiel - Fawzan ALOtaibi.



For any question or suggestion:
histology435@gmail.com

Thanks you for checking
our work, Good luck.
-Team histology.



HISTOLOGY
435

Thyroid gland

Q1- Identify the structure

- Thyroid gland.

Q2- Mention the lining epithelium

- Simple cuboidal epithelium.

Q3- Mention 2 types of cells

A. Follicular cells

(smaller & darker Synthesis of thyroid hormones T4 & T3).

A. Parafollicular cells

(larger & lighter Secrete calcitonin).

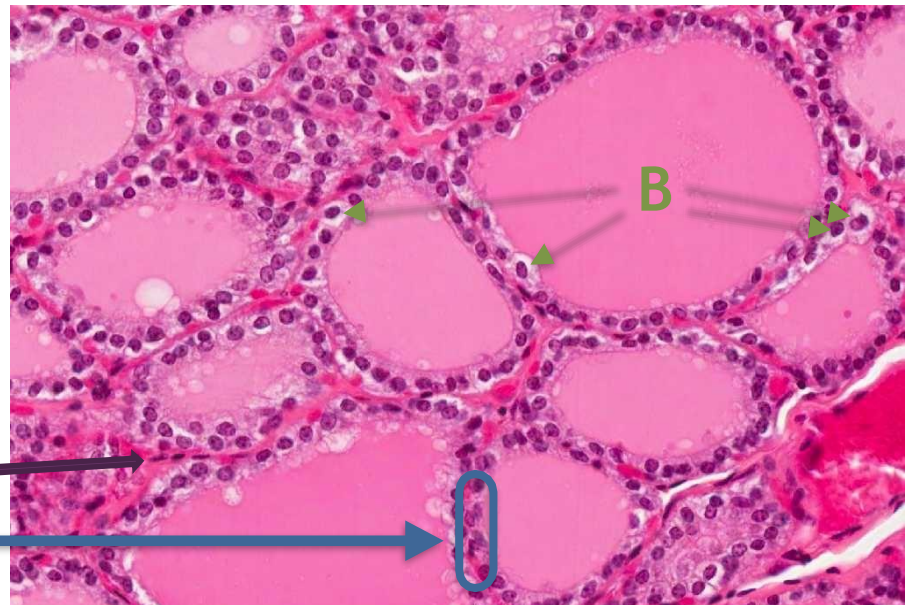
C. Interfollicular cells.

D. Colloid material.

(Colloid material is acidophilic in reaction)

Q4- Whats is the type of capillary of the structure ?

- Fenestrated blood capillaries.

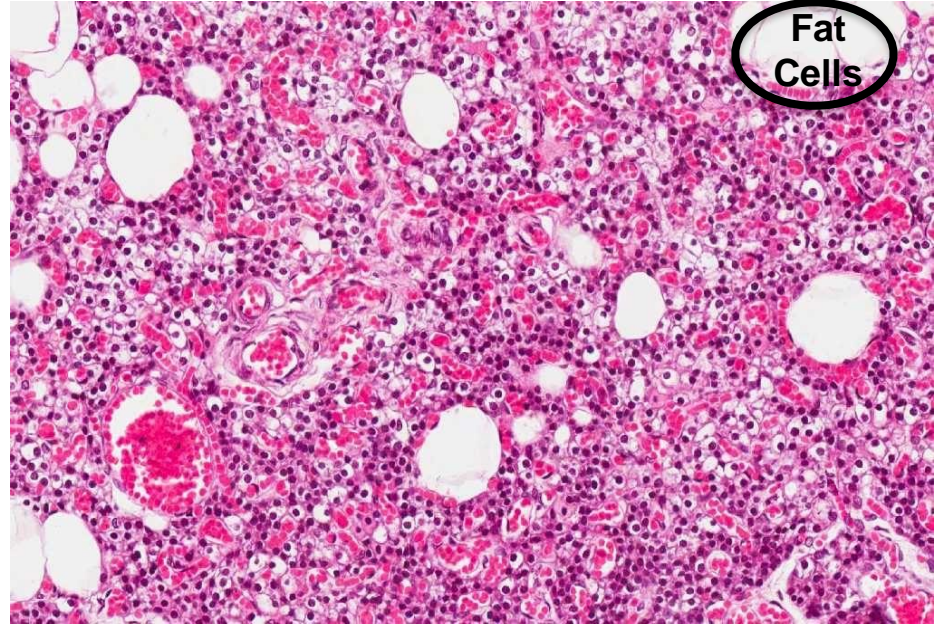


Parathyroid gland

Fat
Cells

Q1- Identify the structure.

- Parathyroid gland.



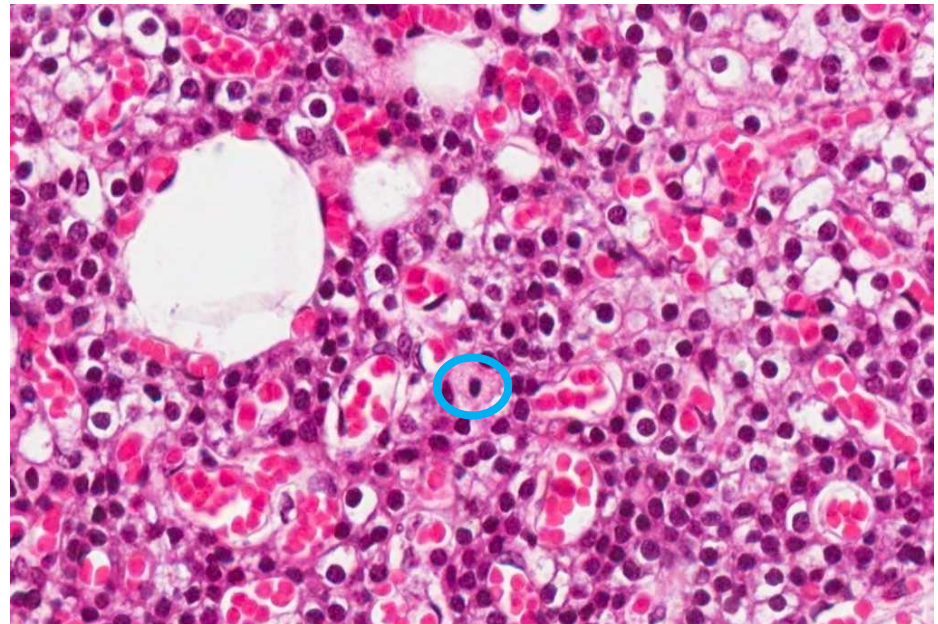
Q2- Mention the cells found in the structure.

A. Chief cells

(Secrete parathyroid hormone).

B. Oxyphil cells

(Larger than Chief cells).



Adrenal gland



Q1- Identify the structure

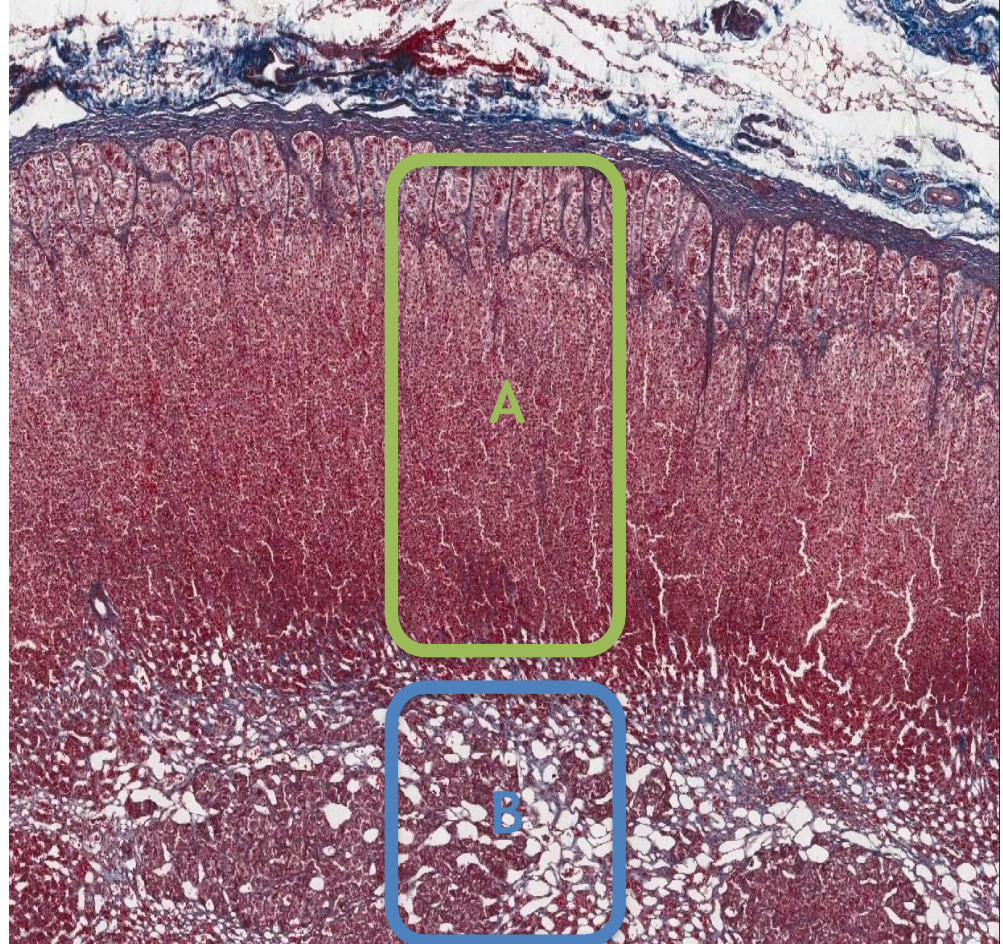
- Adrenal gland.

Q2- Identify A & B

- A. Adrenal Cortex.
- B. Adrenal Medulla.

Q3- Mention the cells that can be found in B

- Chromaffin cell.
- Sympathetic ganglion cells.



Adrenal cortex

Q1- Identify the structure

- Adrenal CORTEX.

Q2- Mention the layers / Identify A,B and C

A. Zona Glomerulosa

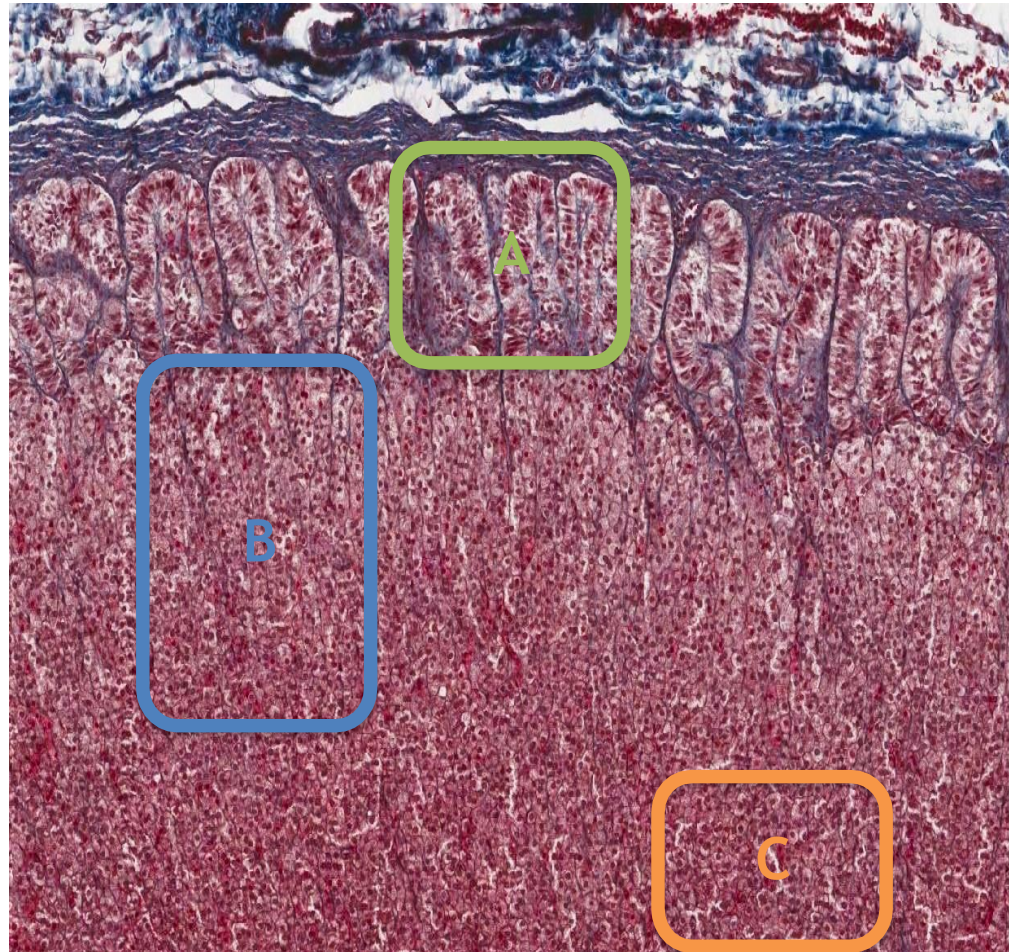
(Produces mineralocorticoids).

B. Zona Fasciculata

(faculated due fat droplets secrete glucocorticoids).

C. Zona Reticularis

(secrete androgens).





EXMINE YOUR SELF!



Q1- Identify the structure

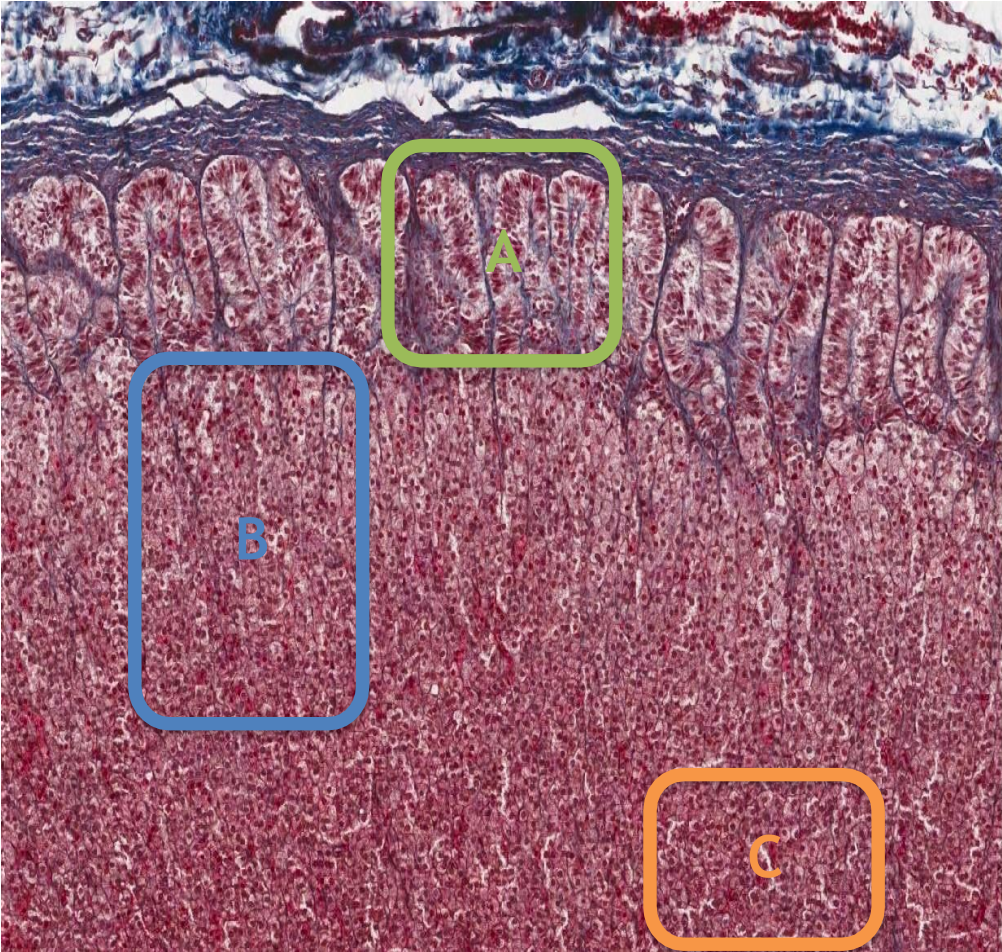
.....

Q2- Mention the layers / Identify A,B and C

A.

B.

C.





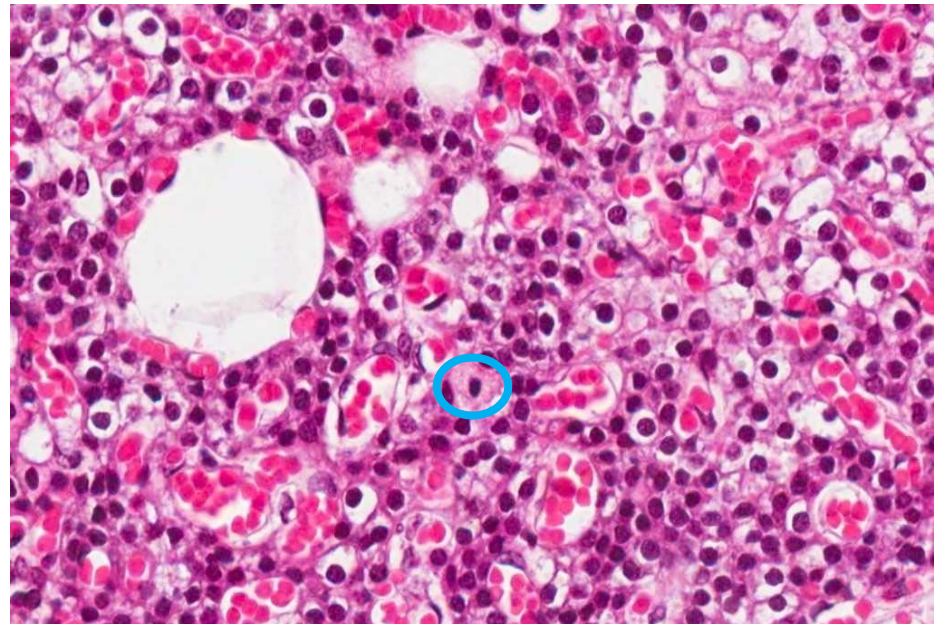
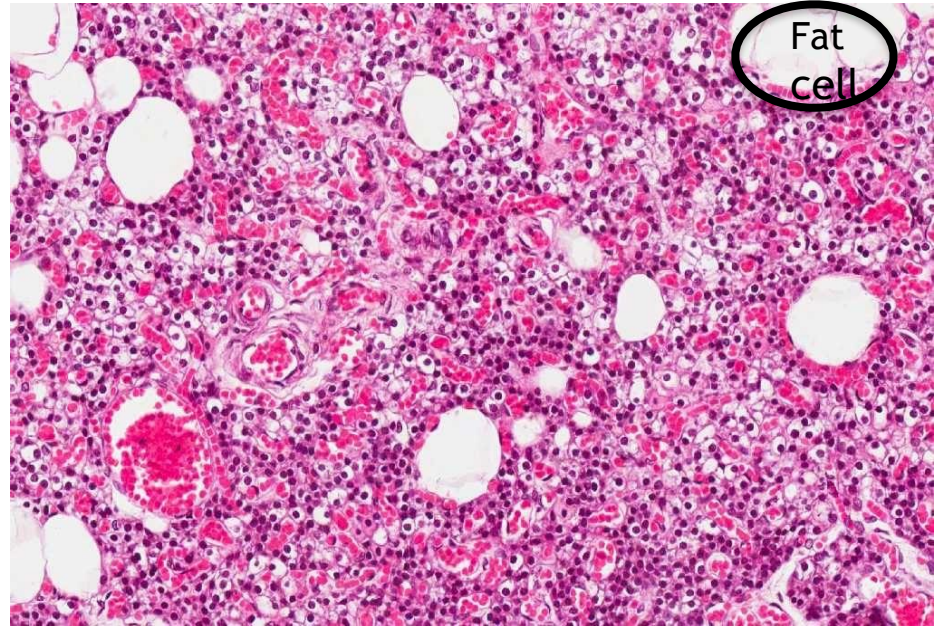
Q1- Identify the structure

- ----- gland.

Q2- Mention the cells found in the structure

A. ----- cells

B. ----- cells





Q1- Identify the structure

- ----- gland.

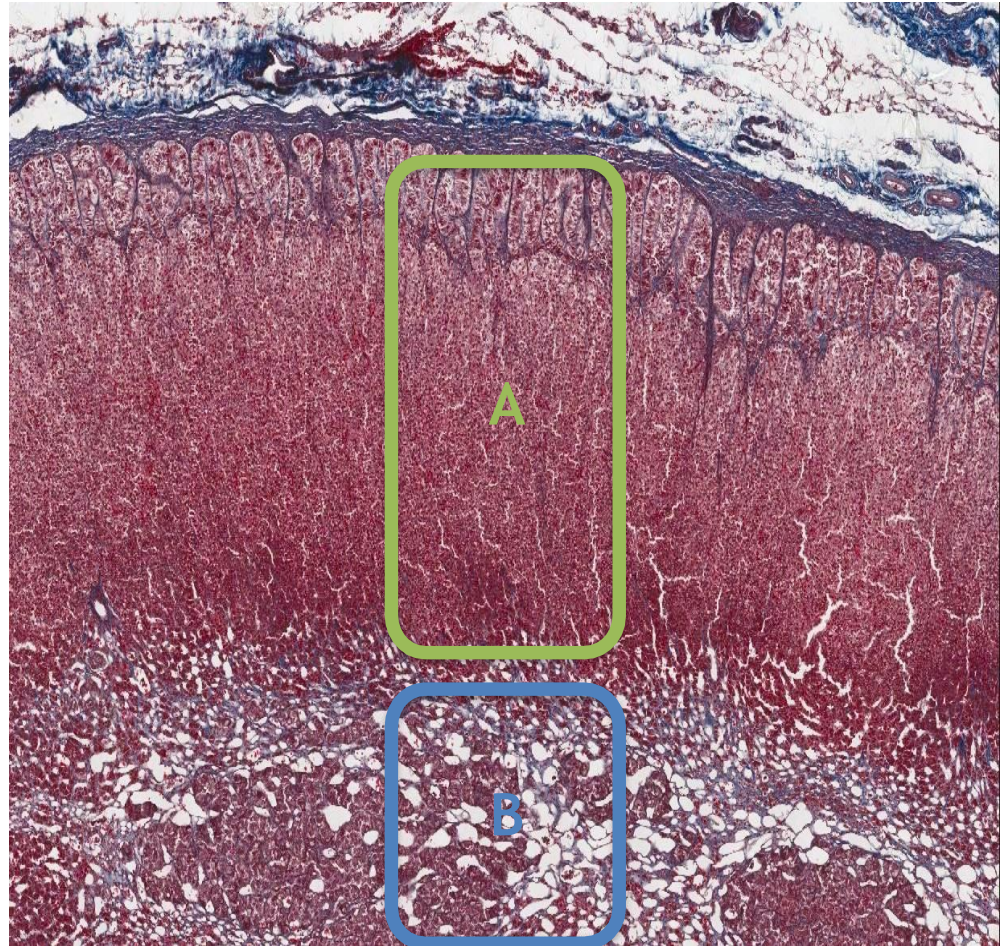
Q2- Identify A & B

A. -----

B. -----

Q3- Mention the cells that can be found in B

- ----- cell.
- ----- cells.



Q1- Identify the structure

Q2- Mention the lining epithelium

• -----

Q3- Mention 2 types of cells

A. ----- cells

B. ----- cells

C. ----- cells.

D. -----

Q4- Whats is the type of capillary of the structure ?

• -----

