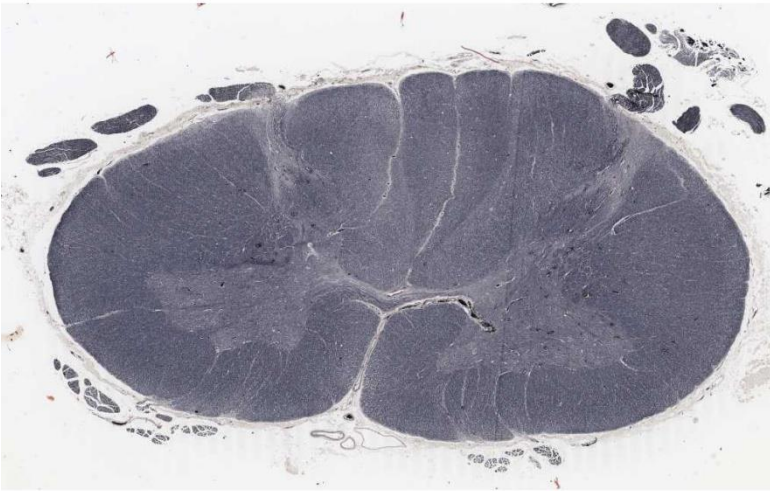


Nervous System

Practical pictures



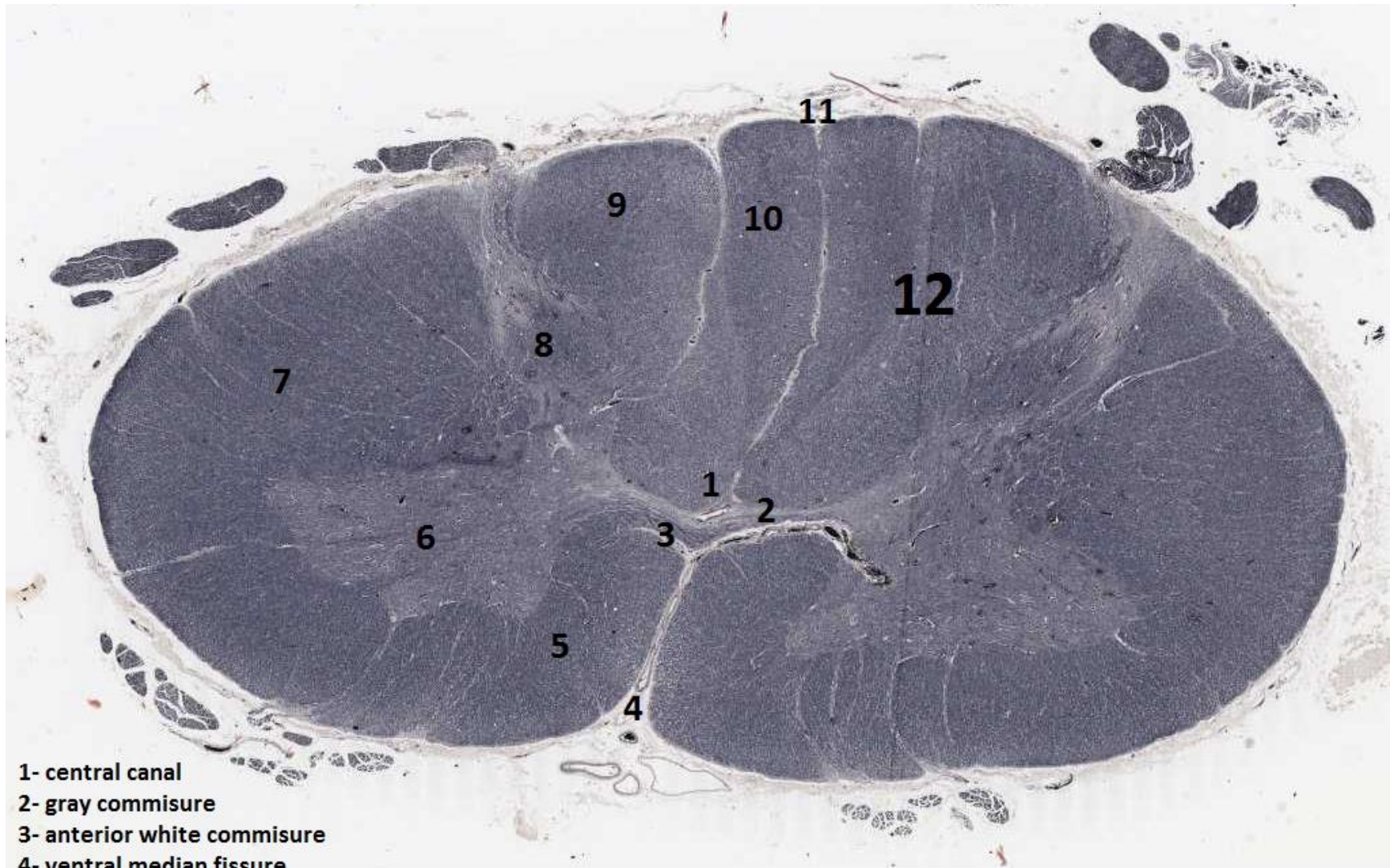
Cervical Spinal Cord



Thoracic Spinal Cord

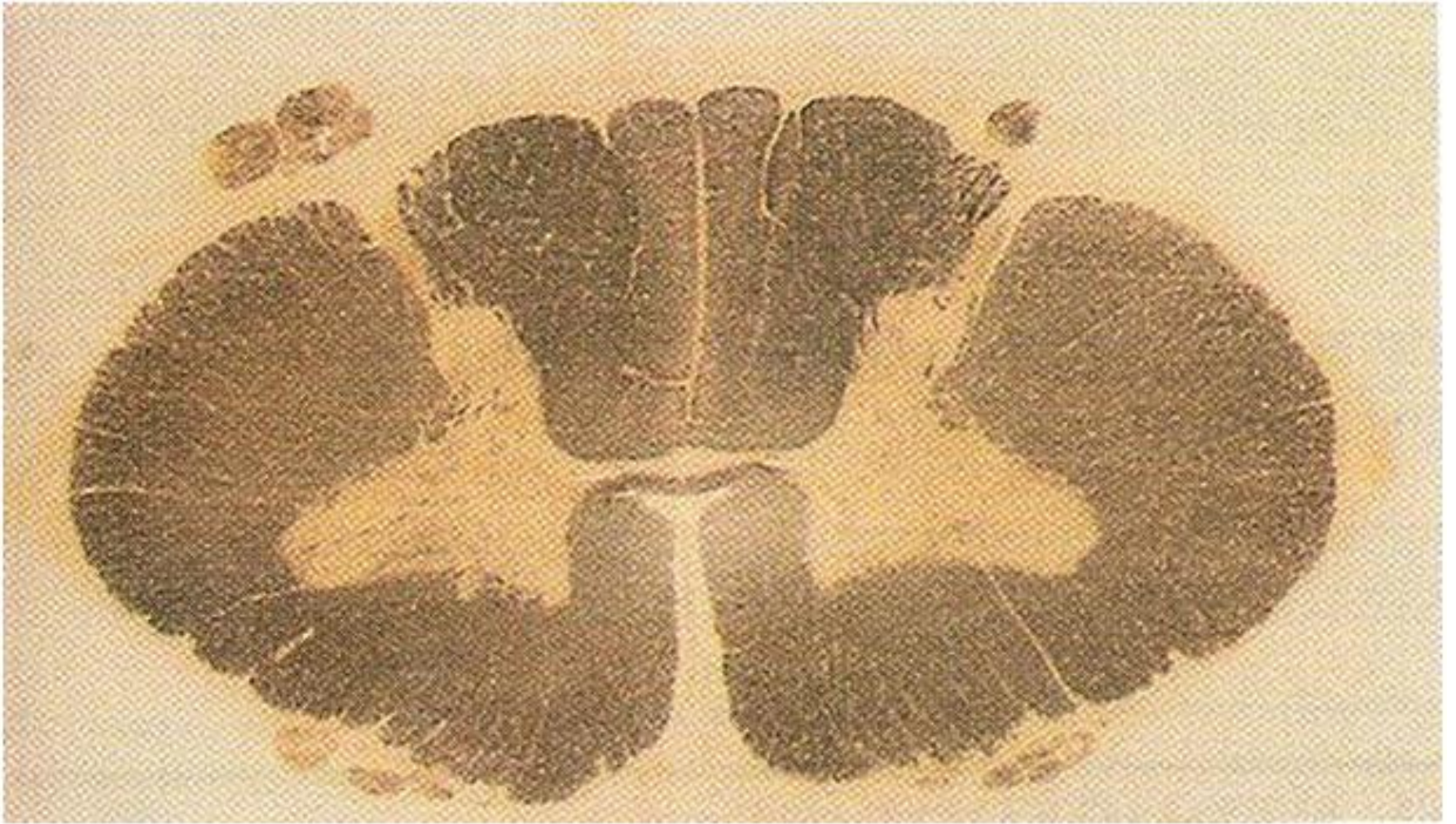


Lumbar Spinal Cord

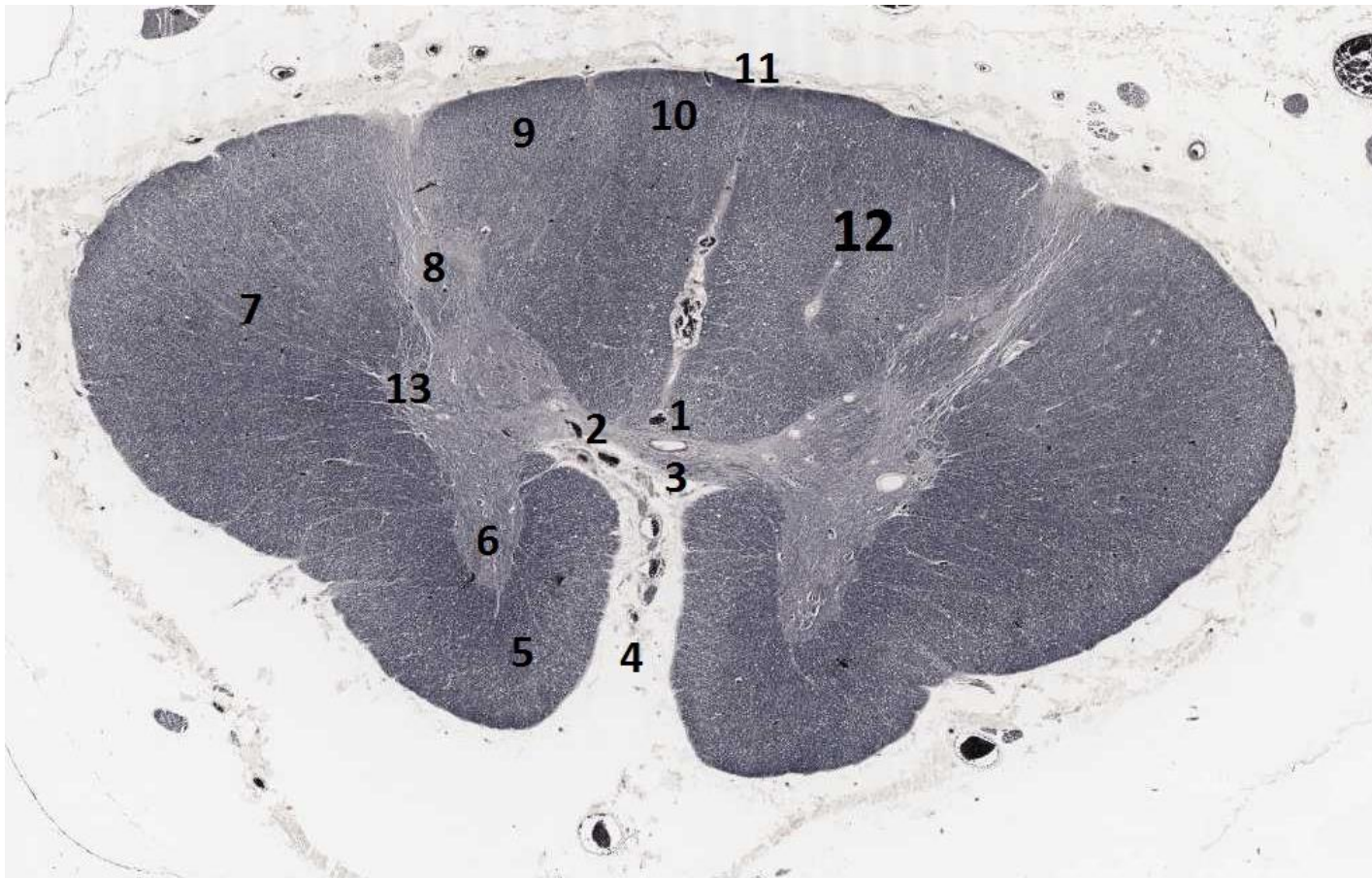


- 1- central canal
- 2- gray commissure
- 3- anterior white commissure
- 4- ventral median fissure
- 5- anterior white column
- 6- anterior gray horn
- 7- lateral white column
- 8- posterior gray horn
- 9- cuneate tract
- 10- gracile tract
- 11- dorsal median sulcus
- 12- posterior white column

Cervical Spinal Cord

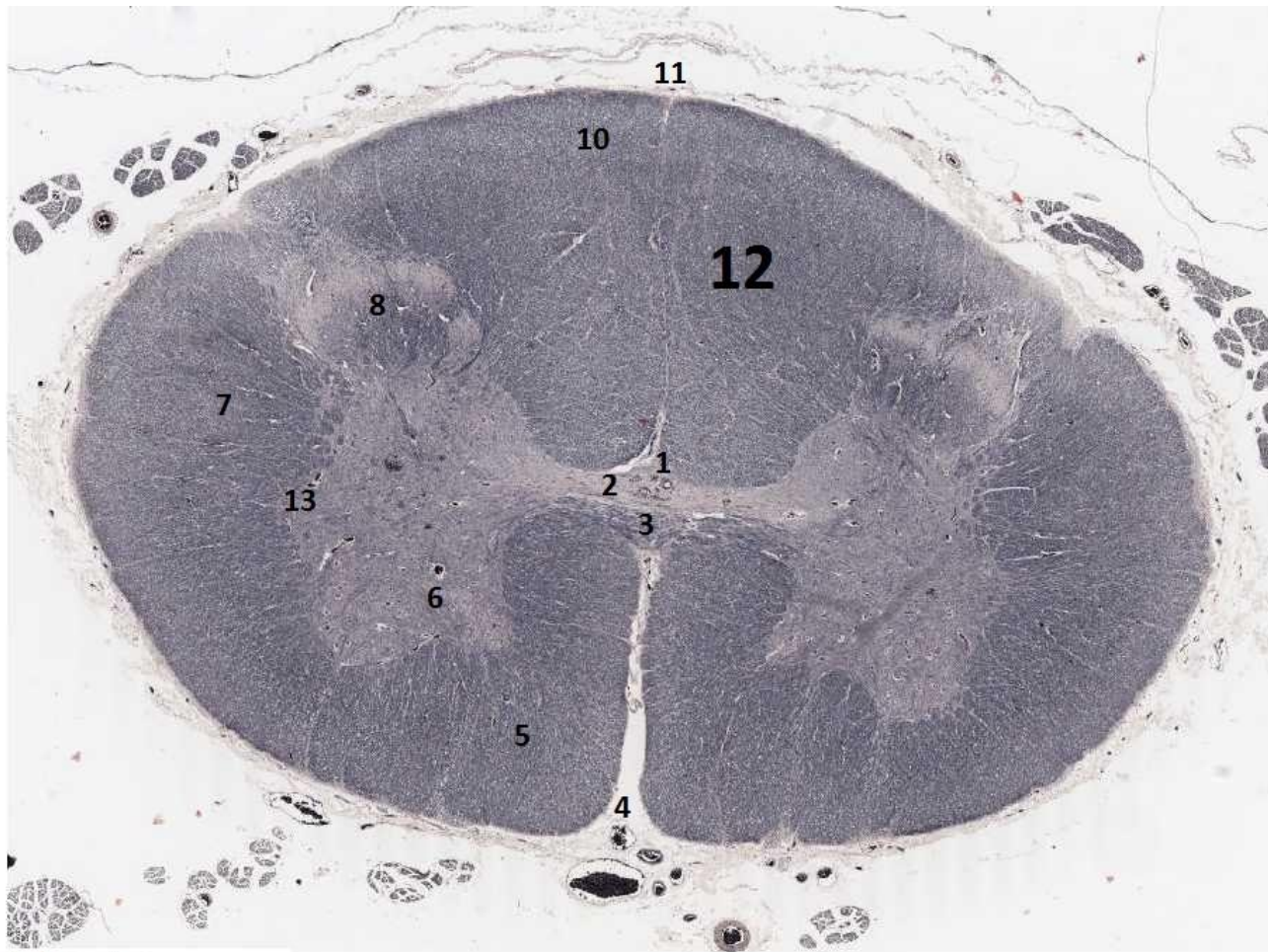


Cervical Spinal Cord



- 1- central canal
- 2- gray commissure
- 3- anterior white commissure
- 4- ventral median fissure
- 5- anterior white column
- 6- anterior gray horn
- 7- lateral white column
- 8- posterior gray horn
- 9- cuneate tract
- 10- gracile tract
- 11- dorsal median sulcus
- 12- posterior white column
- 13- lateral gray horn

Thoracic Spinal Cord



- 1- central canal
- 2- gray commissure
- 3- anterior white commissure
- 4- ventral median fissure
- 5- anterior white column
- 6- anterior gray horn
- 7- lateral white column
- 8- posterior gray horn
- 9- cuneate tract "not found at this level"
- 10- gracile tract
- 11- dorsal median sulcus
- 12- posterior white column
- 13- lateral gray horn

Lumbar Spinal Cord

sensory tracts

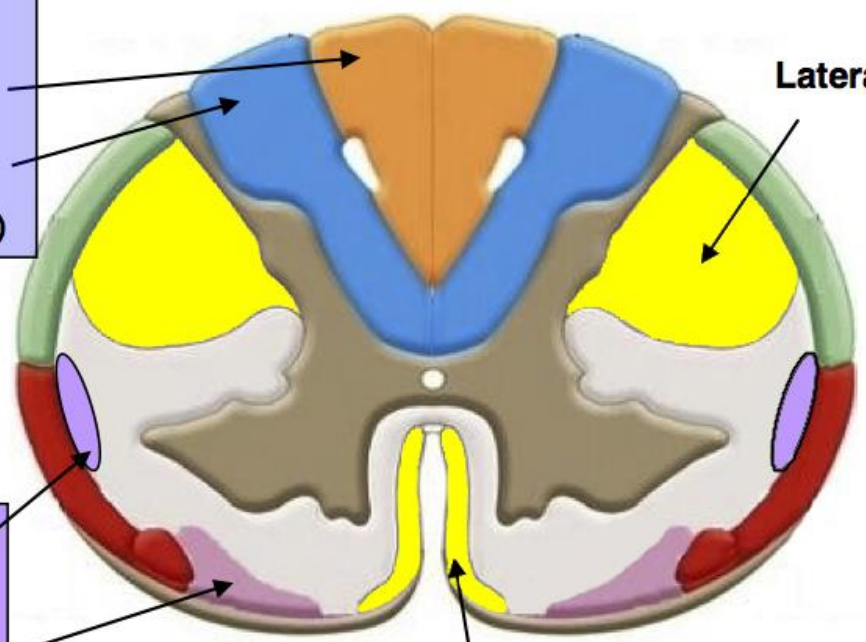
motor tracts

**touch,
pressure,
kinesthesia
pathways**

**Dorsal
(posterior)
columns:**
Gracilis (from leg)
Cuneate (from arm)

**nociceptive
(pain)
pathways**

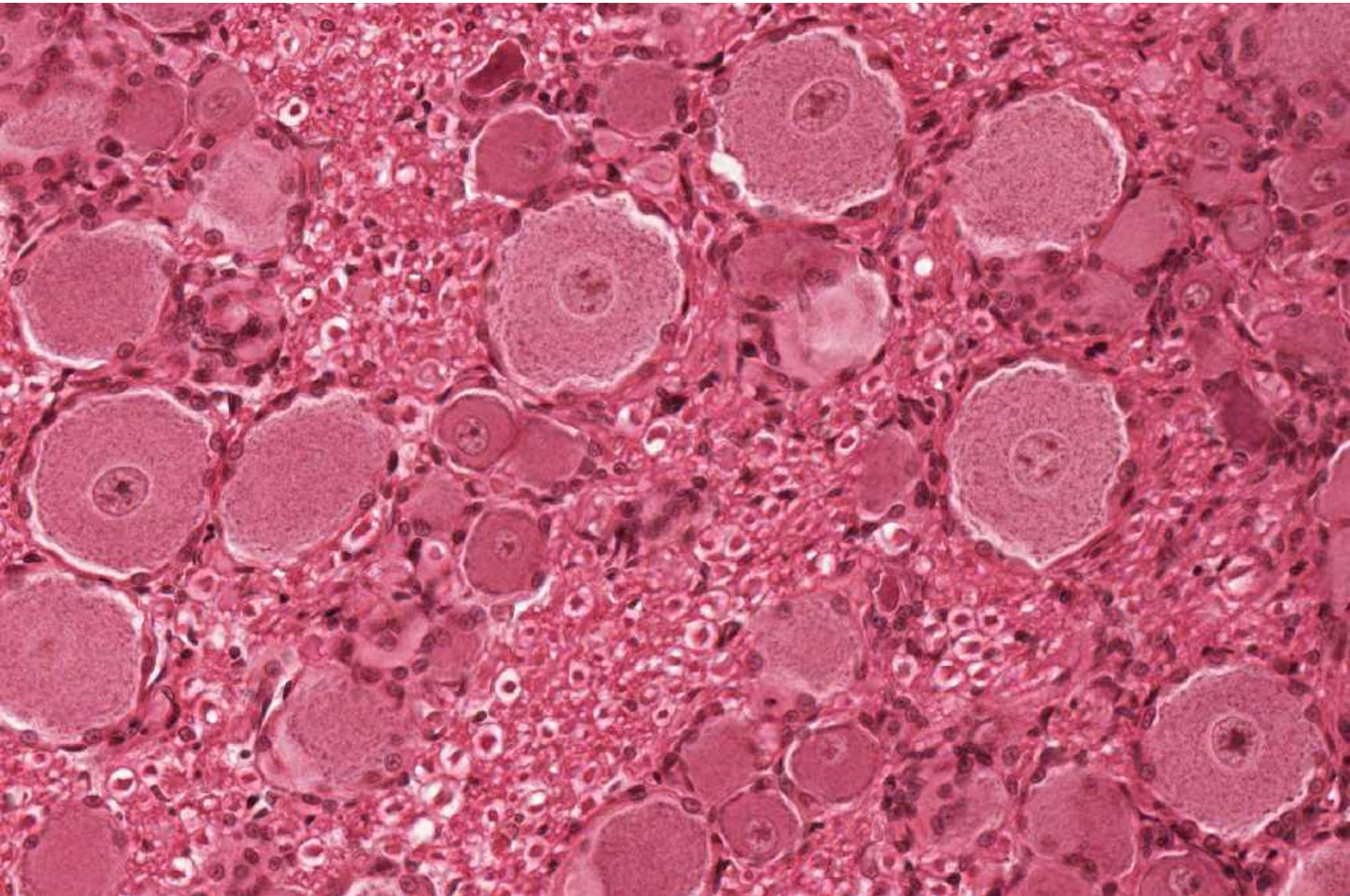
**Spinothalamic
tracts:**
posterior
anterior



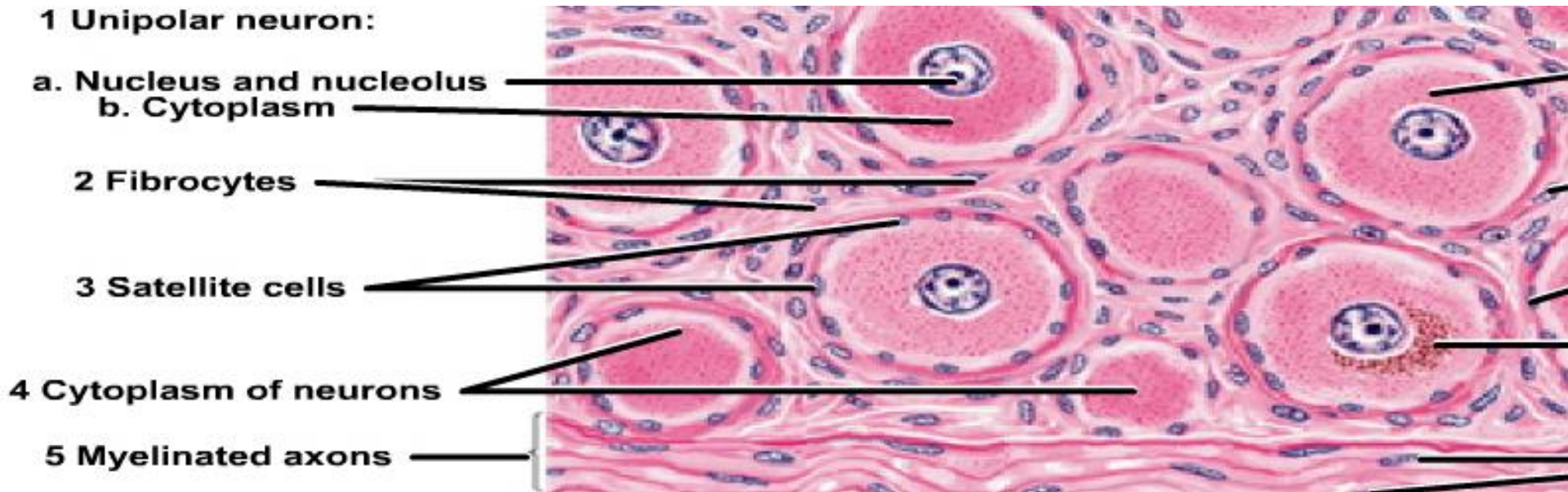
Lateral corticospinal tract

Anterior corticospinal tract

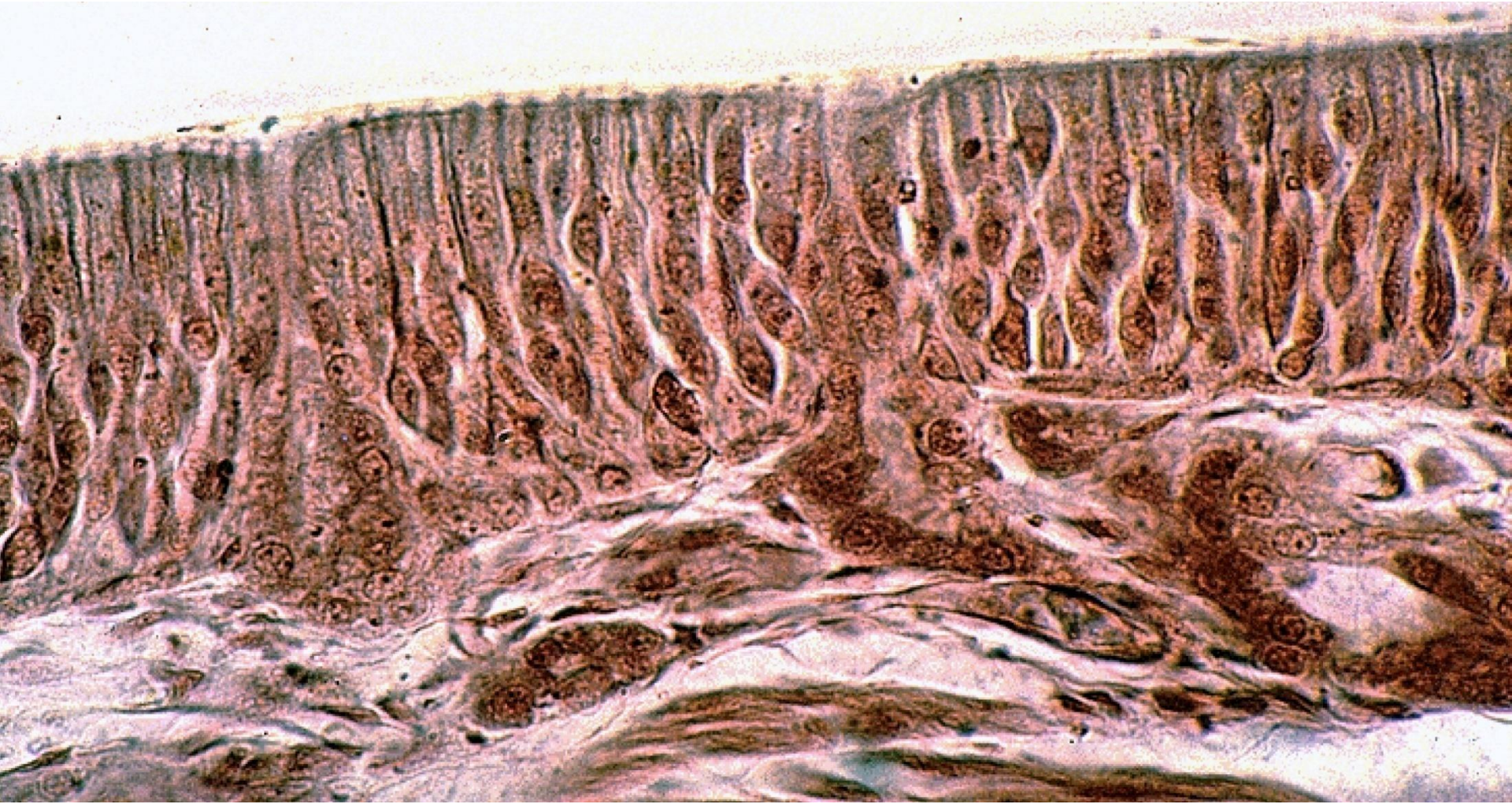
Cervical spinal cord: some tracts.



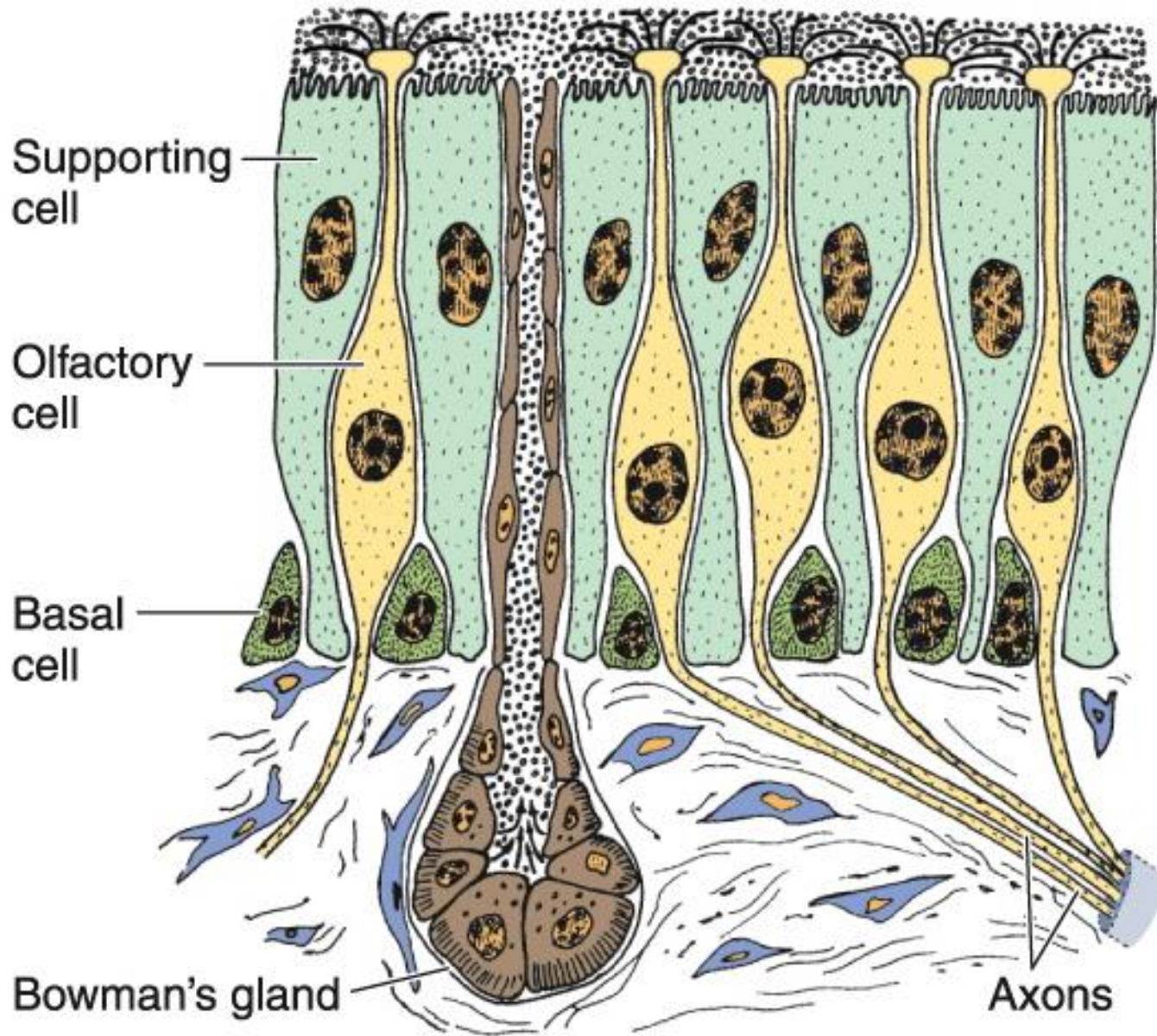
Unipolar neurons (in spinal ganglion)



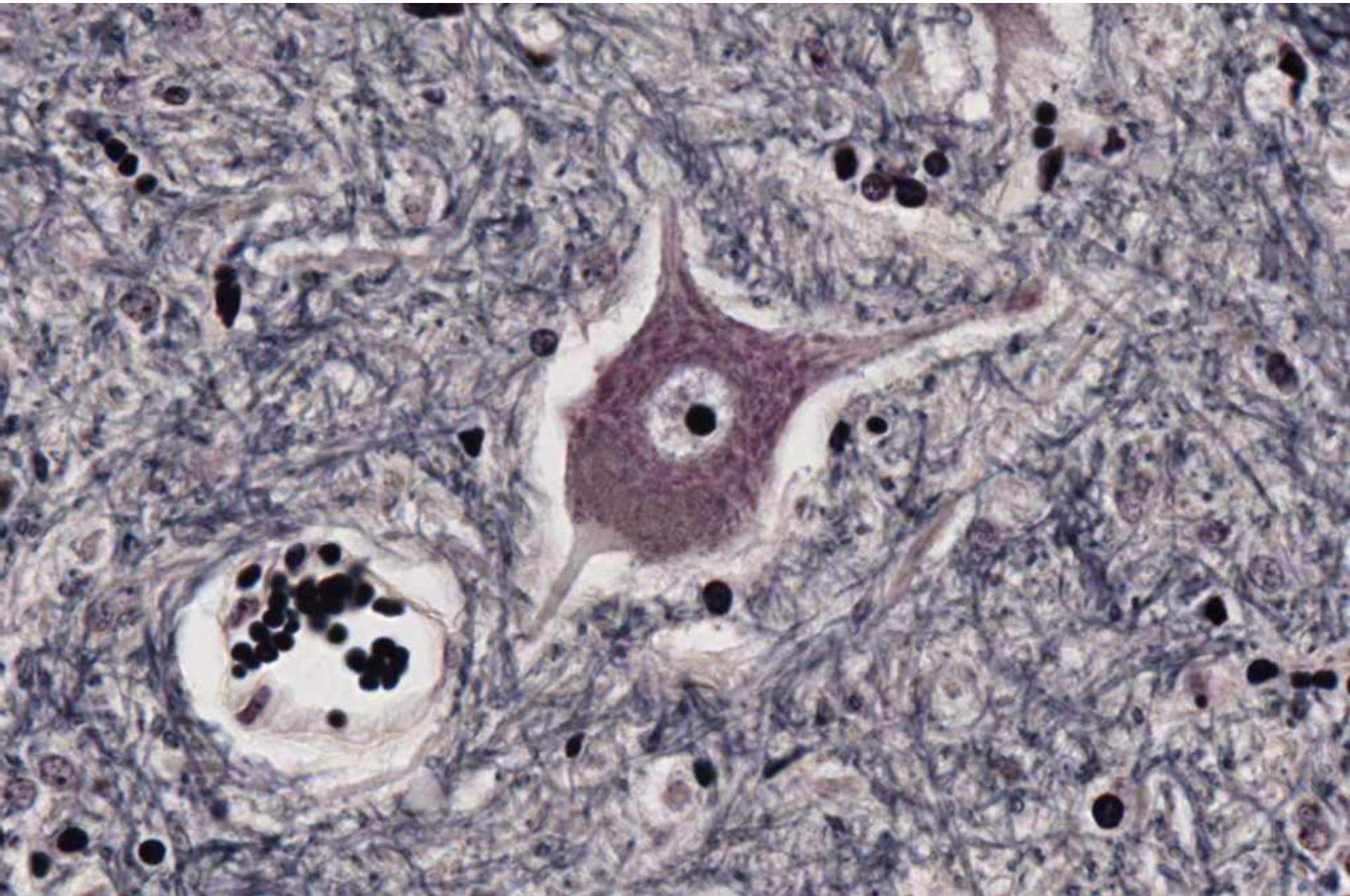
Unipolar neurons (in spinal ganglion) (diagram)



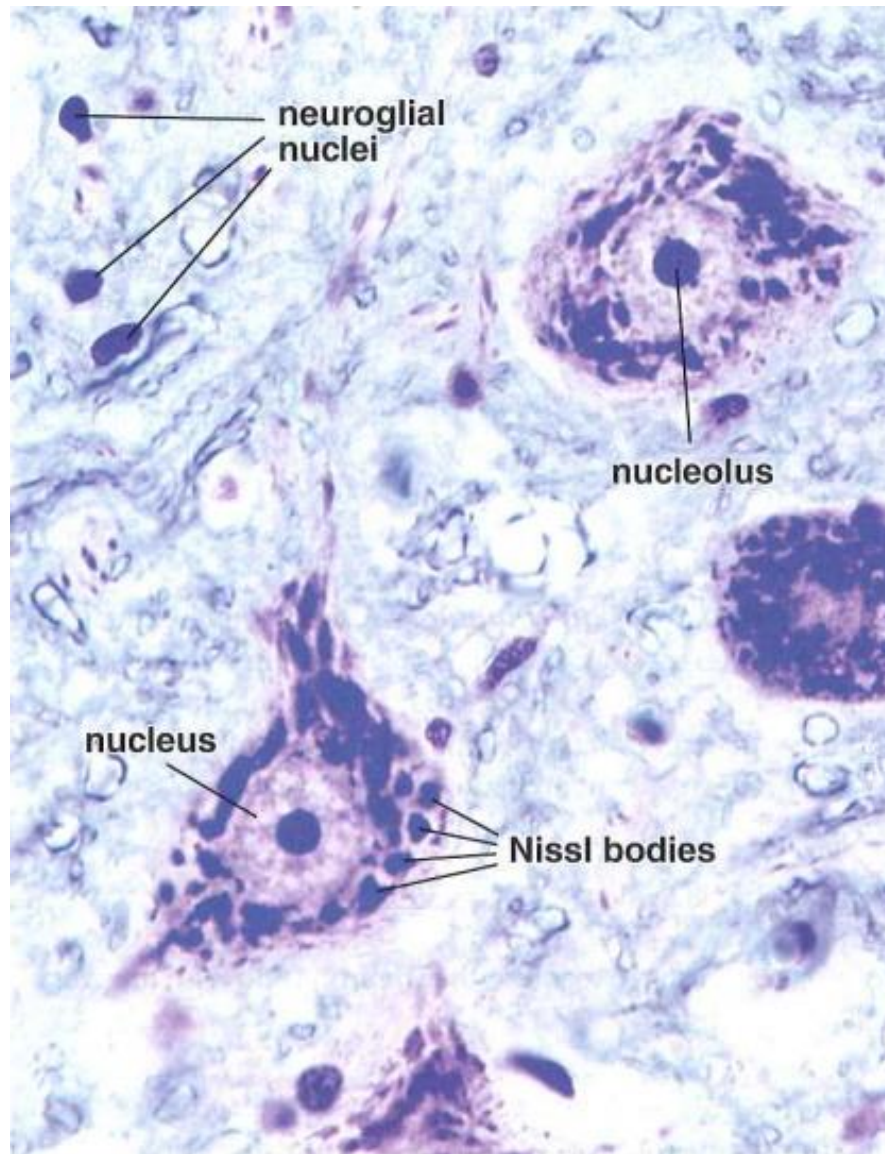
Bipolar neurons (in olfactory epithelium)



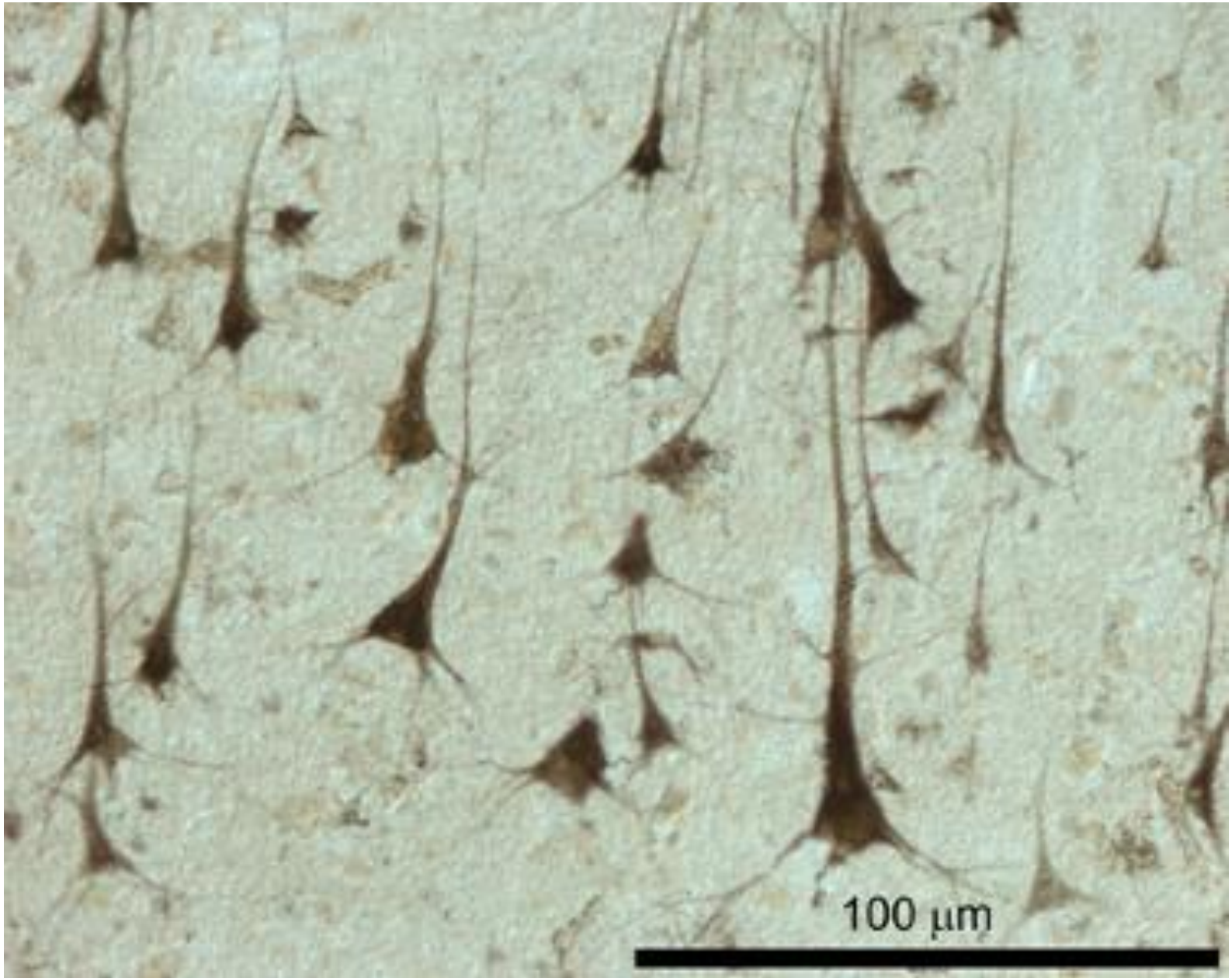
Bipolar neurons (in olfactory epithelium) (diagram)



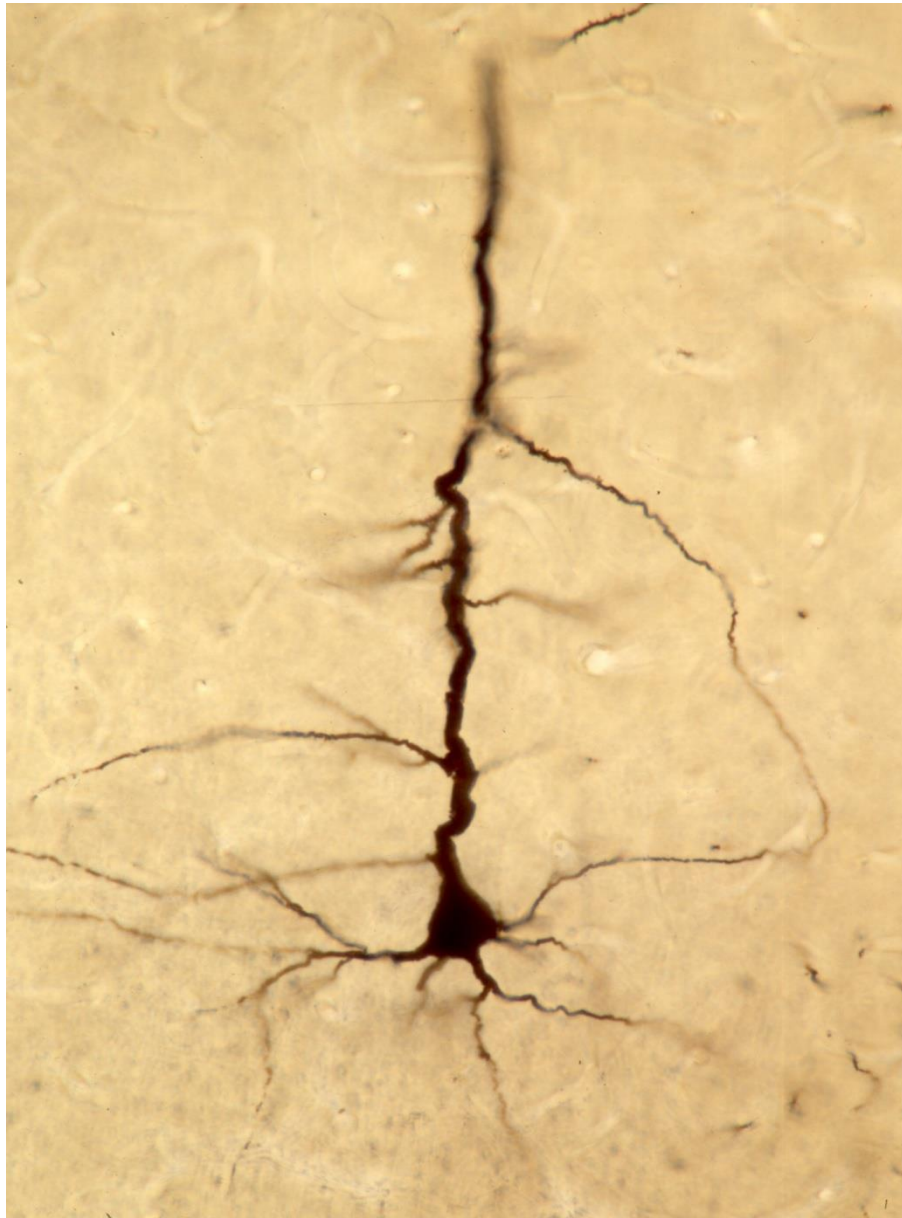
Multipolar stellate neuron (anterior horn cells of the spinal cord)



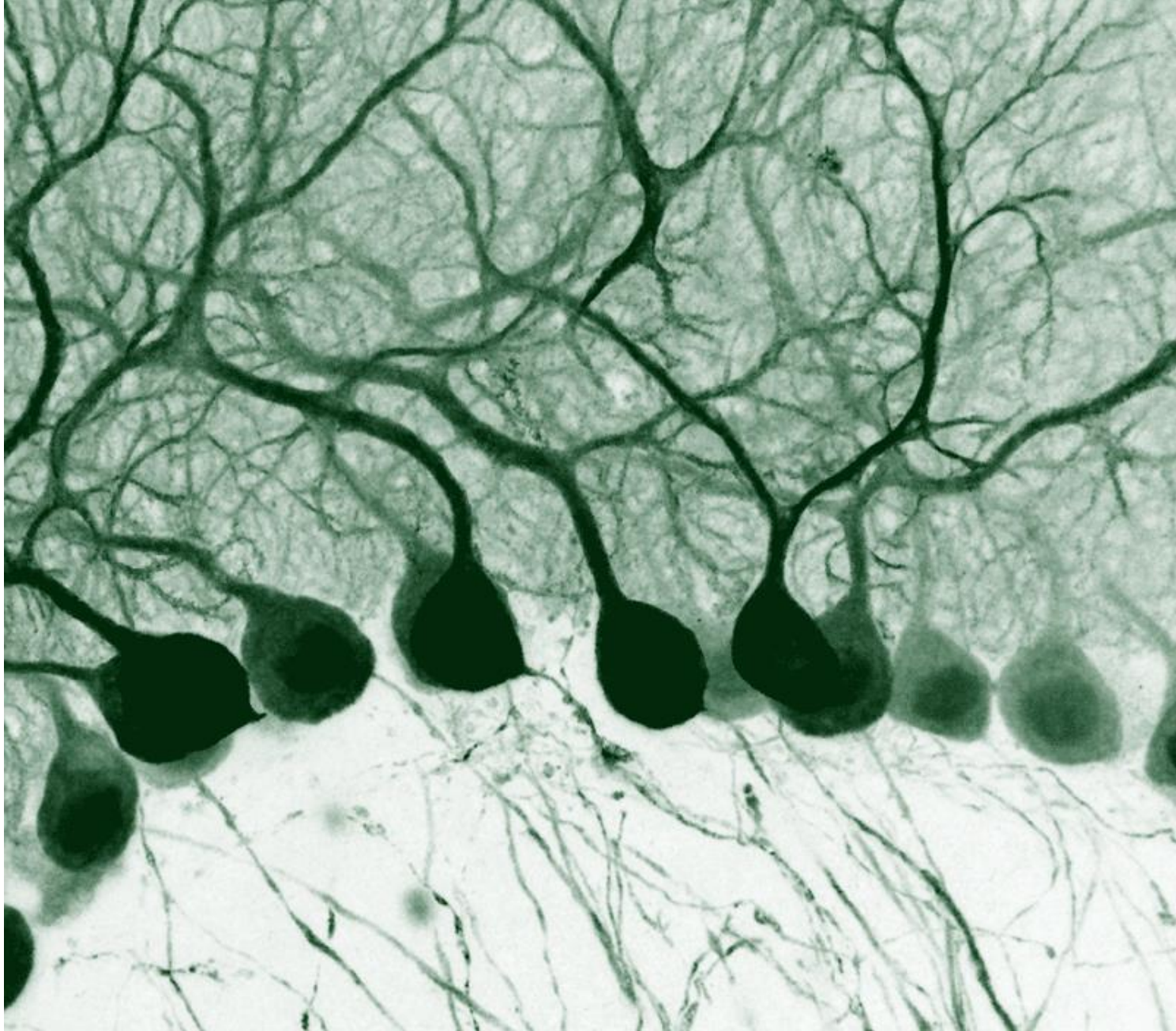
Multipolar stellate neurons (anterior horn cells of the spinal cord) and structure of the cell body of the neuron (nucleus, nucleolus, Nissl bodies)



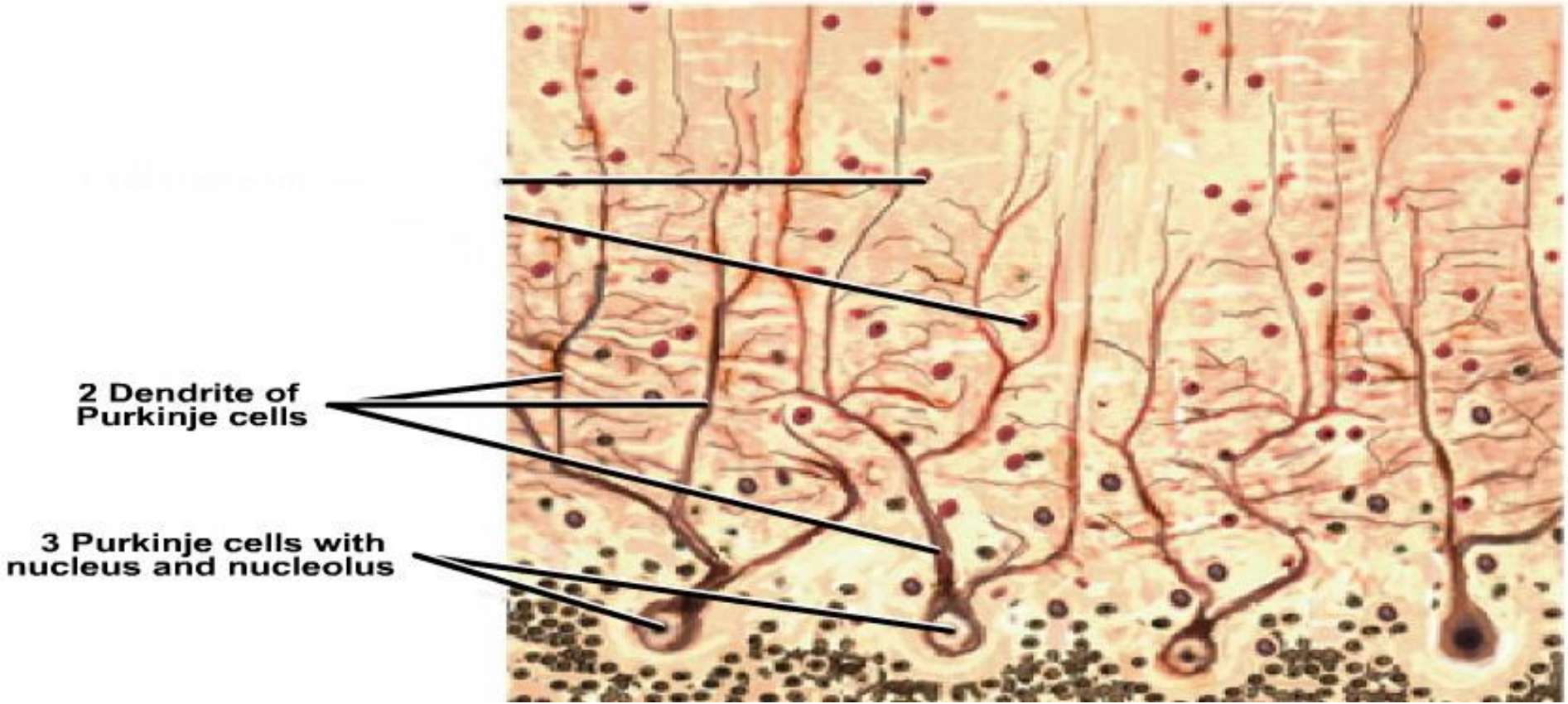
Multipolar pyramidal neurons (in cerebrum)



Multipolar pyramidal neuron (in cerebrum)



Multipolar pyriform neurons (Purkinje cells of cerebellum)



Multipolar pyriform neurons (Purkinje cells of cerebellum)