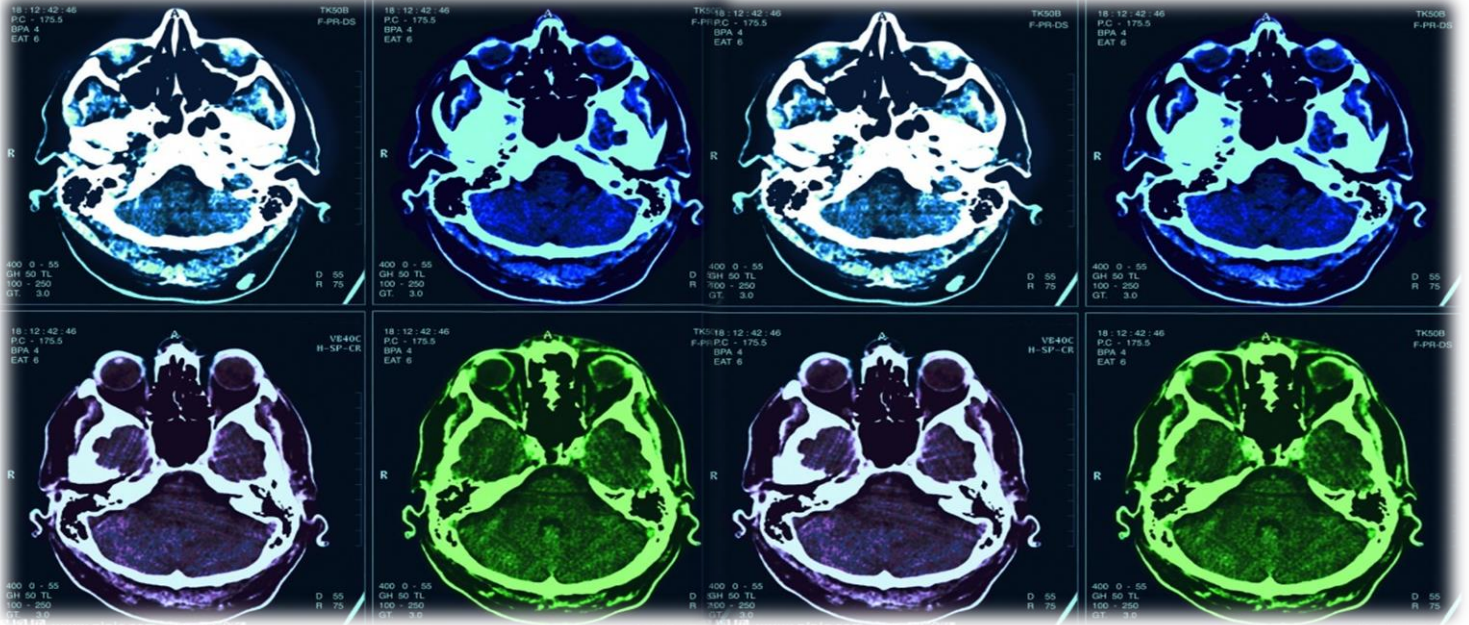


Neurosychatry Block



BRAIN AND SPINAL CORD

OSPE File

Team Leaders:

Hanin Bashaikh

Mohammed Alduayj

Reference:

Females' & males' doctors revision.

Red: important

Green: Doctor's notes

Grey: Extra

Sagittal images of the brain & brain stem:

- 1- Mid brain.
- 2- Pons.
- 3- Medulla Oblongata.
- 4- Cerebellar tonsil.
- 5- 4th ventricle (black triangle).
- 6- 3rd ventricle (the black cavity under the grey mass of the thalamus).
- 7- Lateral ventricle (the black cavity).
- 8- Corpus callosum.
- 9- Thalamus (the grey mass under the lateral ventricle).
- 10- Cingulate gyrus.
- 11- Cingulate sulcus.

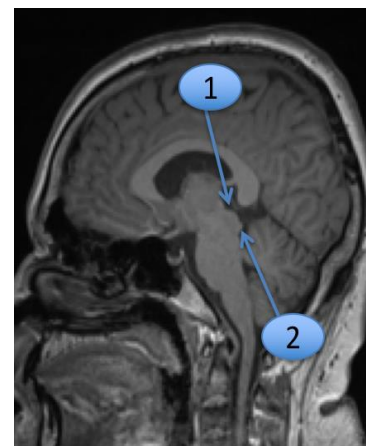


Sagittal T1WI

Notice the 2 elevations from the dorsal part of the brain stem.

1. Superior colliculus.
2. Inferior colliculus.

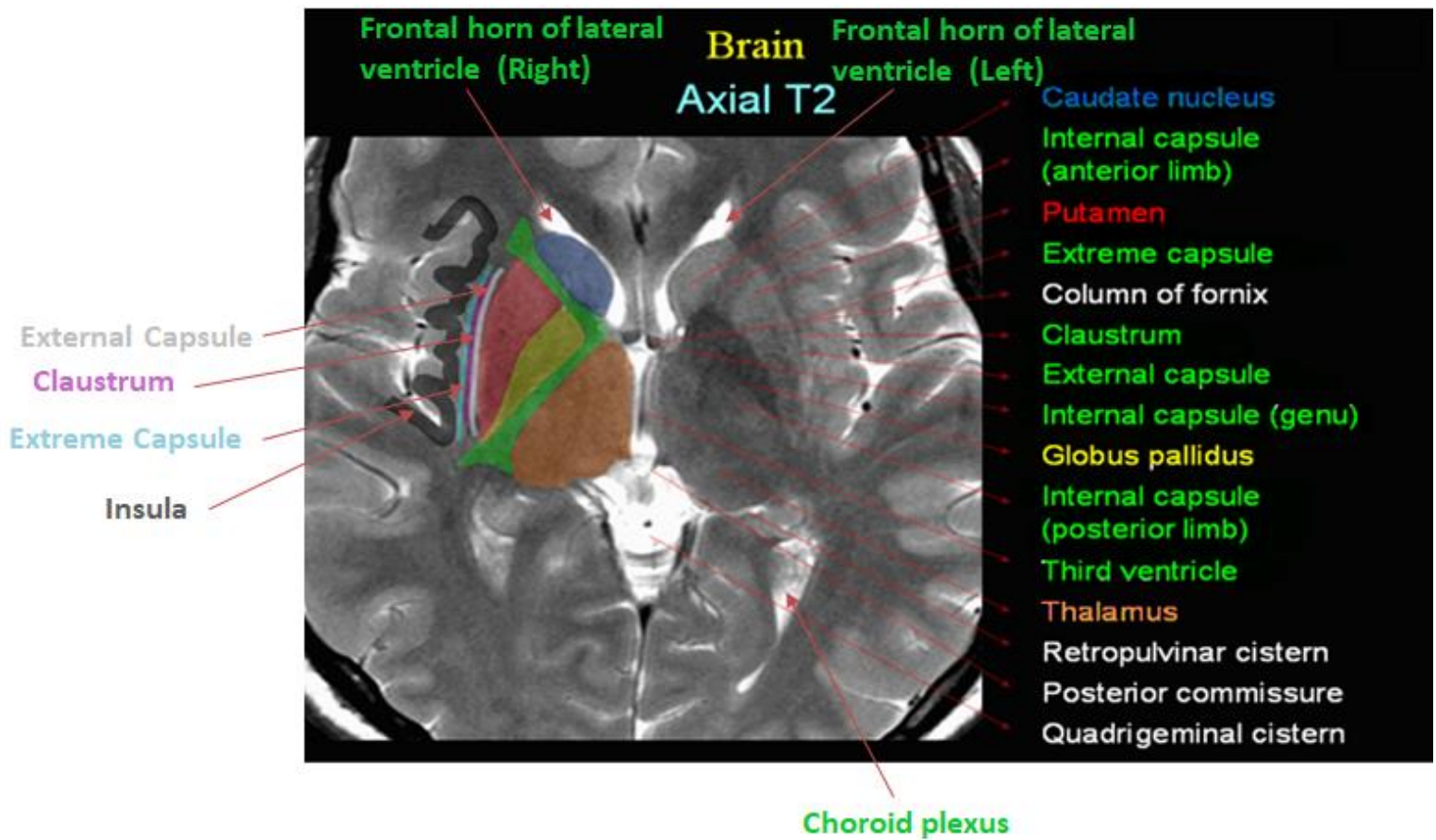
(both are more clear in sagittal radiographies)



Sagittal T1WI

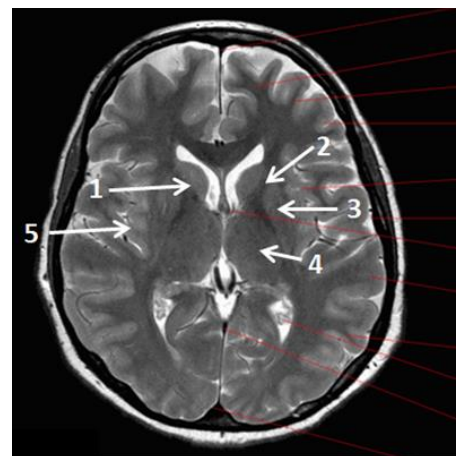


Axial image of the brain & basal ganglia:



*Please make sure that you can know the structures without colors.

- 1- Caudate nucleus.
- 2- Anterior limb of internal capsule.
- 3- Putamen.
- 4- Thalamus.
- 5- Insula.



"ليس شرطاً أن يكون الإنجاز عظيماً حتى تحتفي به، احتفي بإنجازاتك الصغيرة حتى تكبر (=)"

END OF CNS BLOCK!!

Best of luck!