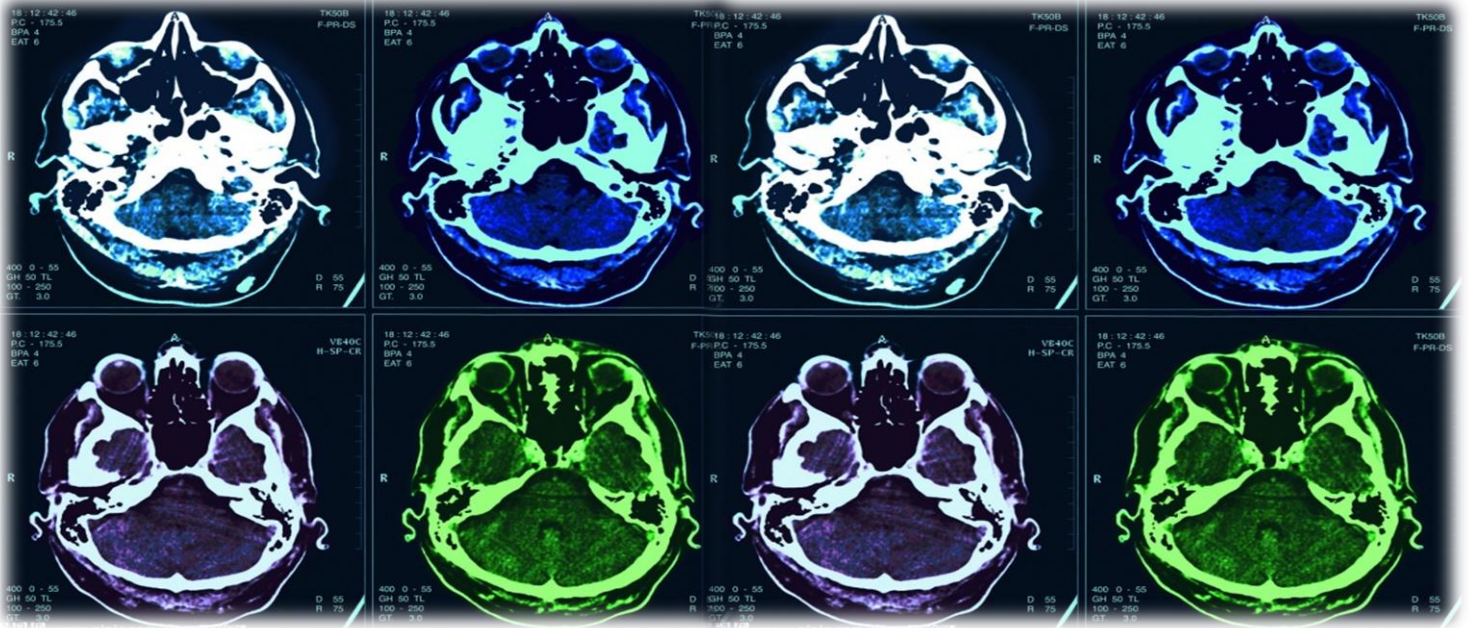


Neurosychatry Block



BRAIN AND SPINAL CORD

OSPE File

Team Leaders:

Hanin Bashaikh

Mohammed Alduayj

Refrence:

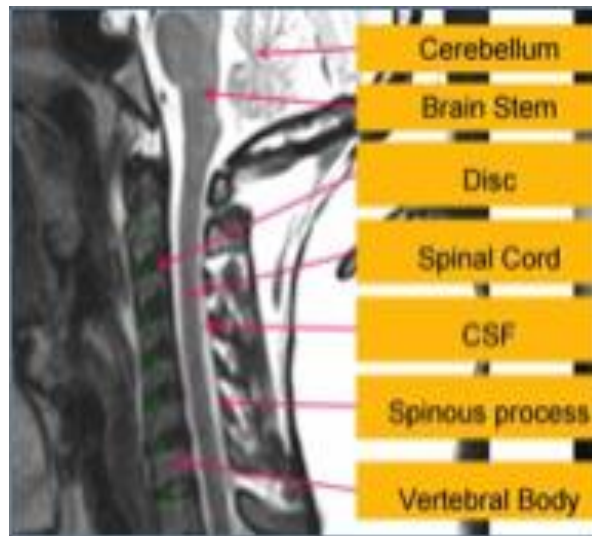
Female's doctor revision. This file IS NOT revised by any doctor and it based only on the information that female's doctor went through in her OSPE session.

Red: important

Green: Doctor's notes

Grey: Extra

Spinal Cord:

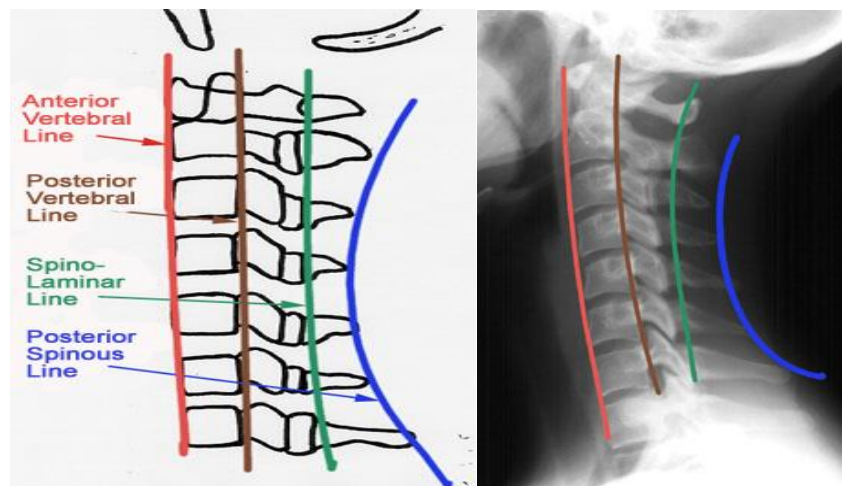


This picture is
VERY
IMPORTANT

T2 WI – sagittal section

Assess for parallel lines* (imaginary lines):

1. Anterior vertebral line.
2. Posterior vertebral line.
3. Spinolaminar line.
4. Posterior spinous line.



*A radiograph may be given, and you should know whether it is X-ray, CT-scan or MRI.

Quick Recall:

MRI vs. CT: In MR gray and black bone, where in CT the bone is white.

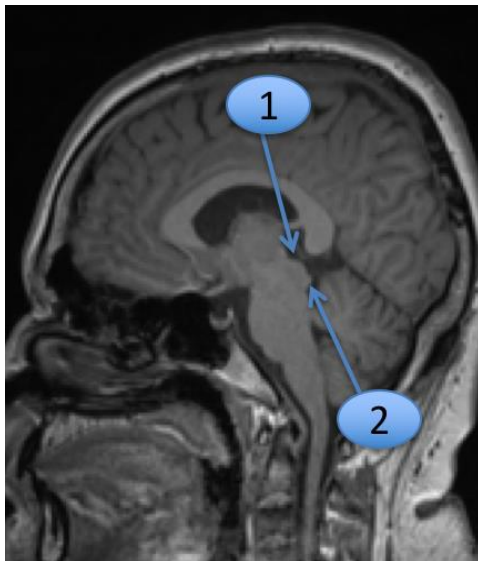
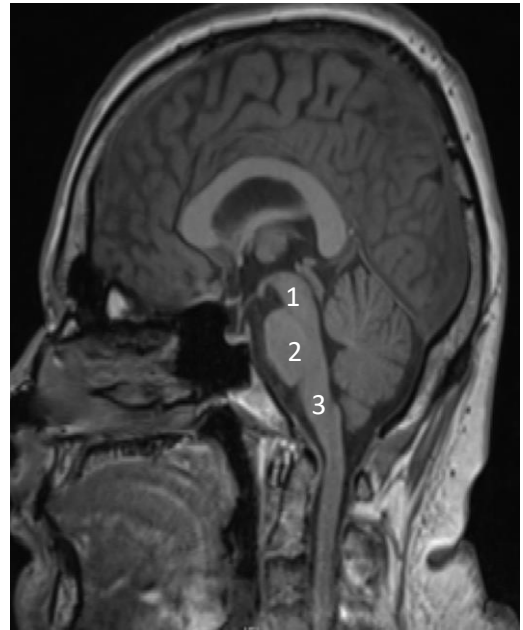


Brainstem:

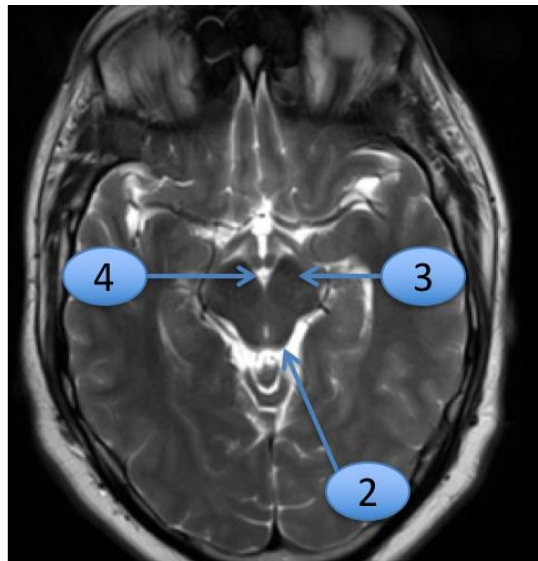
Three parts from superior to inferior:

- 1- Mid brain.
- 2- Pons (**biggest part**).
- 3- Medulla Oblongata.

VERY IMPORTANT



Sagittal T1WI



Axial T2WI

1.Superior colliculus.

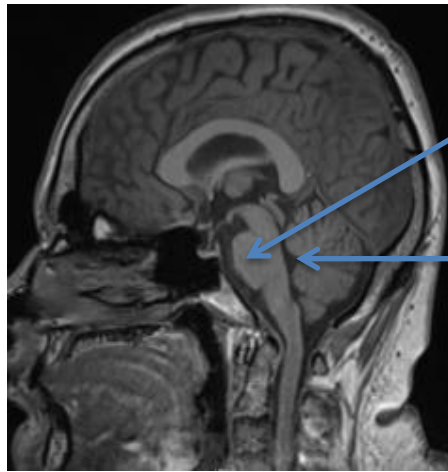
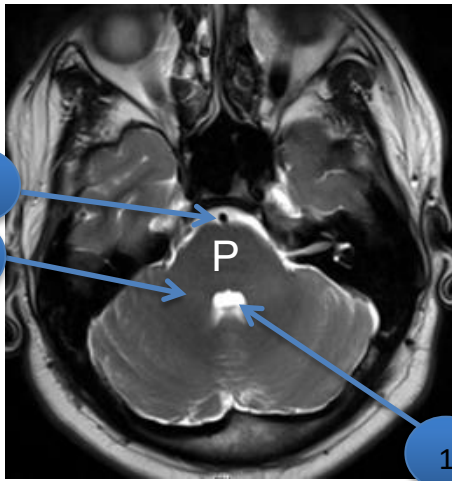
2.Inferior colliculus.

(both are more clear in sagittal radiographes)

3.Cerebral peduncle.

4.Interpeduncular cistern.



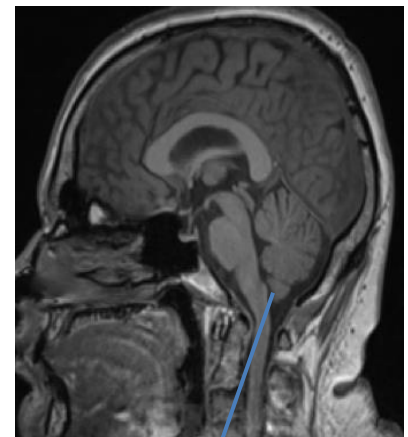


- P pons
1. 4th ventricle**.
 2. basilar artery***.
 3. middle cerebellar peduncle.

Cerebellum:

Radiological Features:

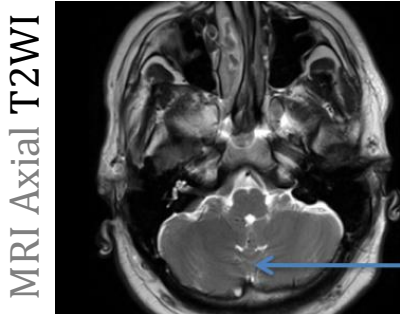
1. Cerebellum is connected to the brainstem by three pairs of cerebellum peduncles:
 - Superior: connected to the midbrain.
 - Middle: connected to the pons.
 - Inferior: connected to medulla oblongata.



MRI Sagittal T1WI

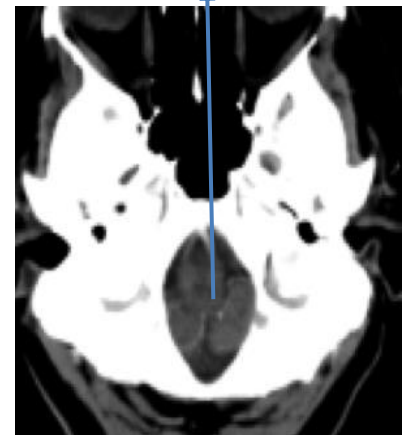
Cerebellar Tonsil

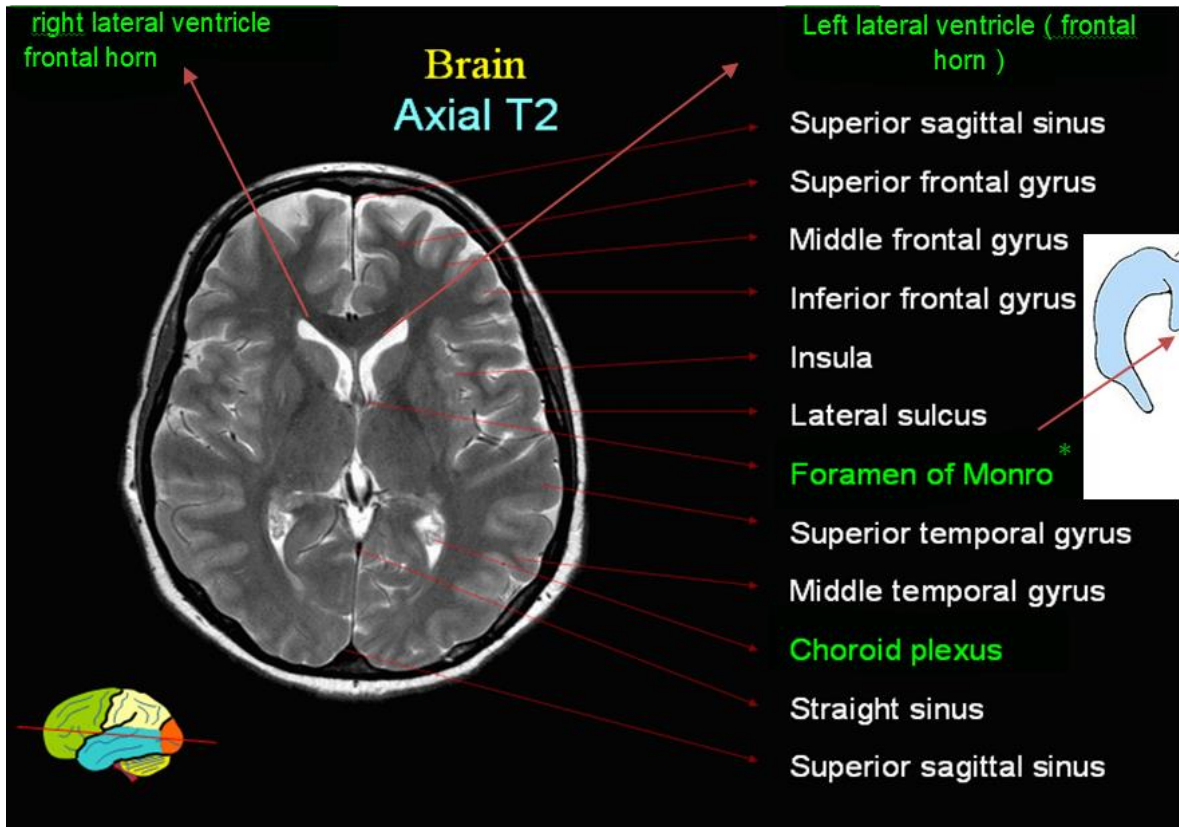
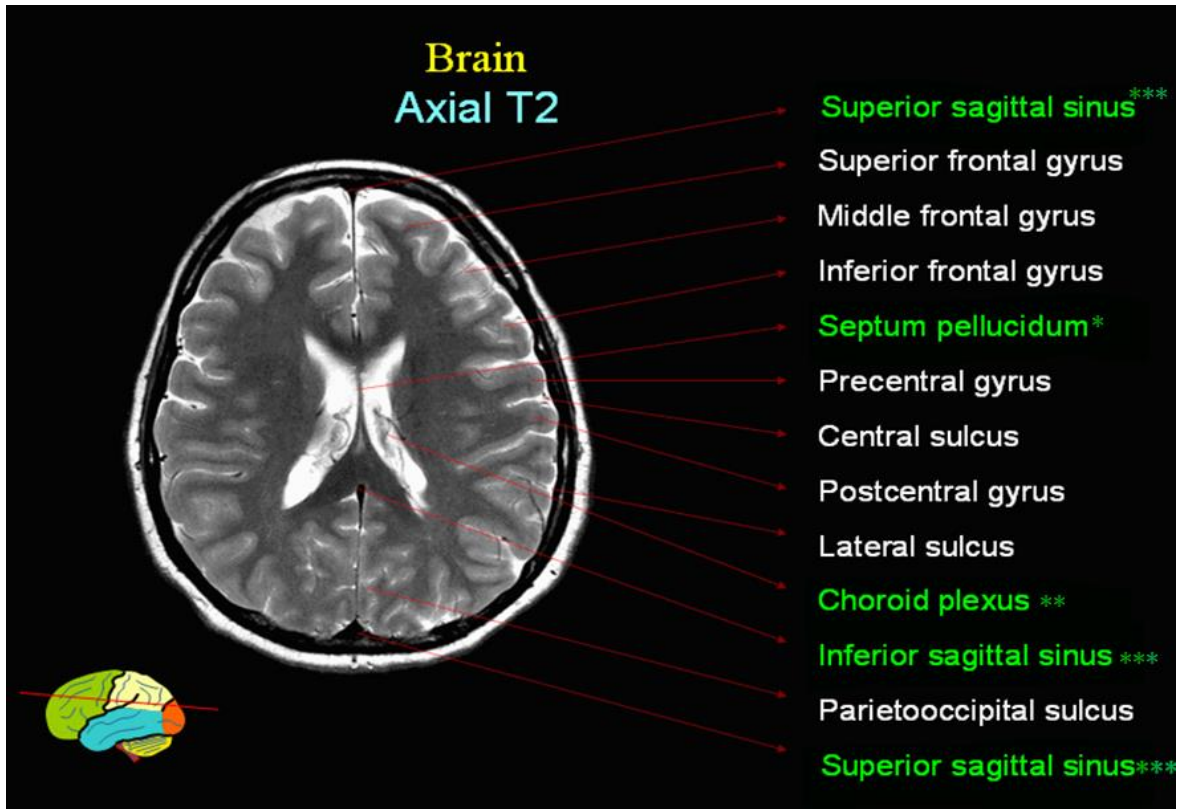
Two cerebellar hemisphere with midline vermis (Sulcus between 2 hemispheres)



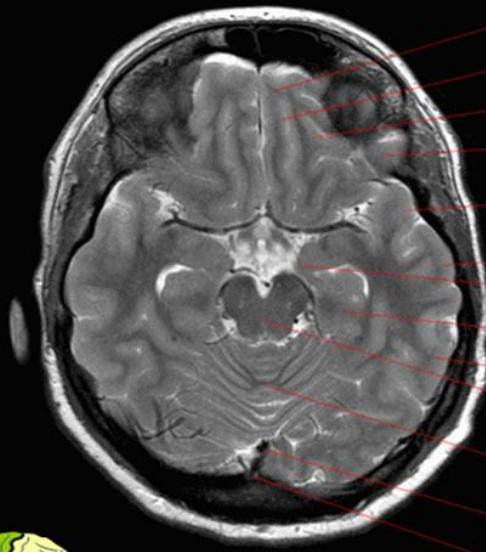
MRI Axial T2WI

Vermis



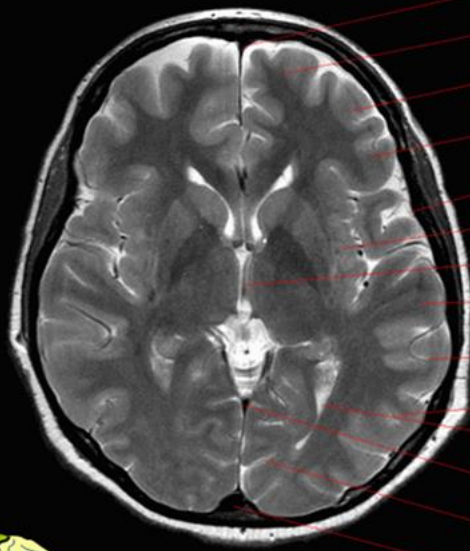


Brain
Axial T2



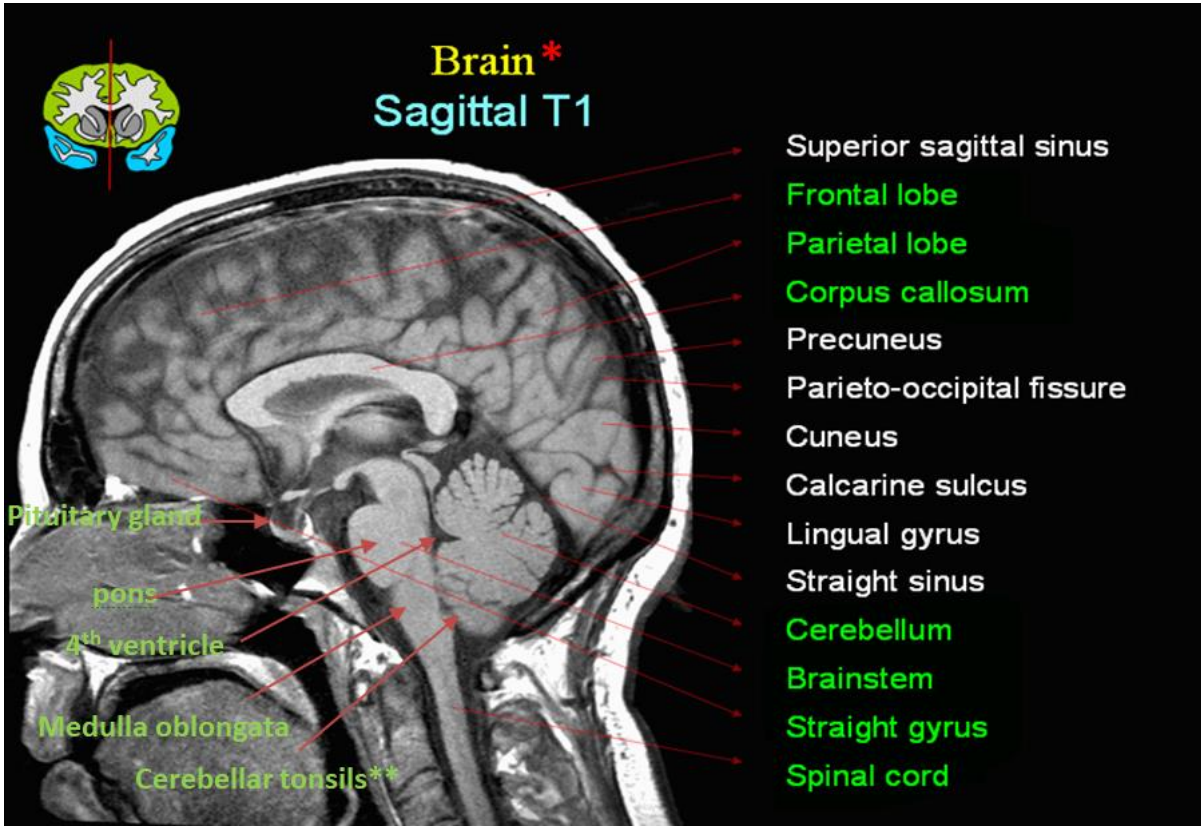
- Gyrus rectus
- Olfactory sulcus
- Orbital gyrus
- Inferior frontal gyrus
- Superior temporal gyrus
- Middle temporal gyrus
- Uncus
- Parahippocampal gyrus
- Inferior temporal gyrus
- Midbrain*
- Vermis
- Straight sinus
- Superior sagittal sinus

Brain
Axial T2



- Superior sagittal sinus
- Superior frontal gyrus
- Middle frontal gyrus
- Inferior frontal gyrus
- Lateral sulcus
- Insula
- Third ventricle
- Superior temporal gyrus
- Middle temporal gyrus
- Inferior temporal gyrus
- Occipital horn of lateral ventricle
- Straight sinus
- Calcarine sulcus
- Superior sagittal sinus





"ليس شرطاً أن يكون الإنجاز عظيماً حتى تحتفى به، احتفي بإنجازاتك الصغيرة حتى تكبر (=)"

END OF CNS BLOCK!!

Best of luck!

