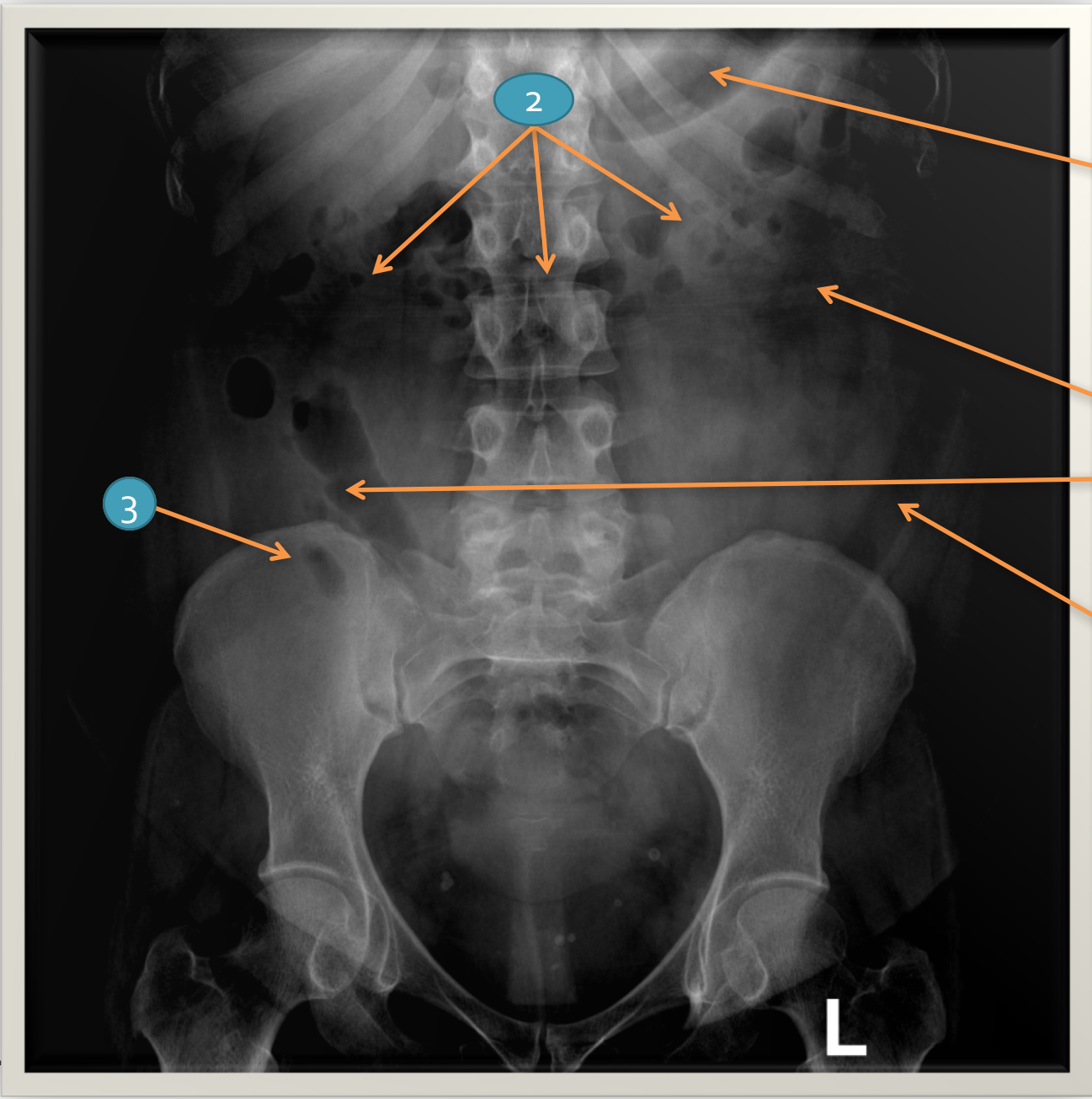


RADIOLOGICAL ANATOMY OF THE SMALL & LARGE BOWEL

**Practical Session (2)
Radiology**



1

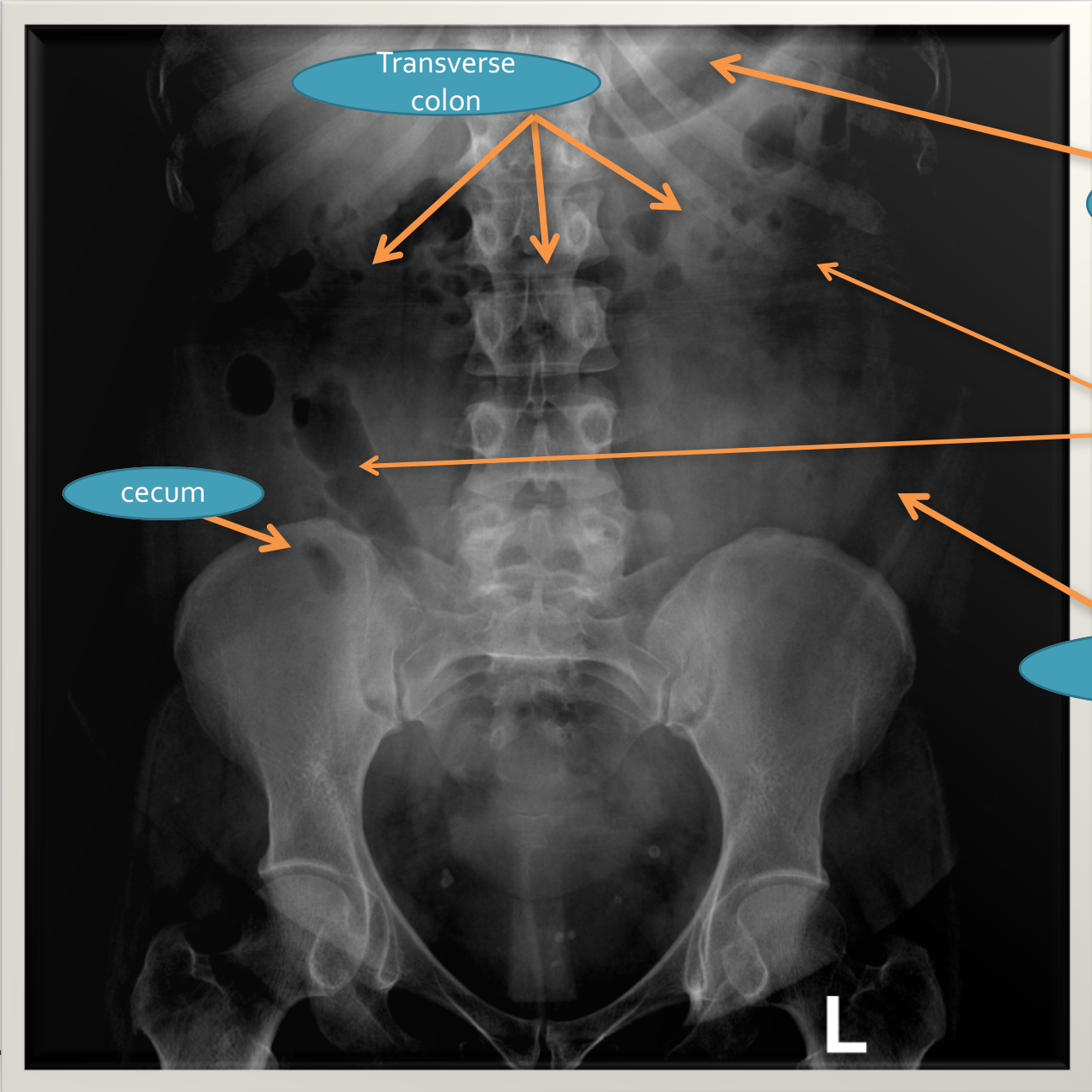
2

3

4

5

L



Transverse colon

stomach

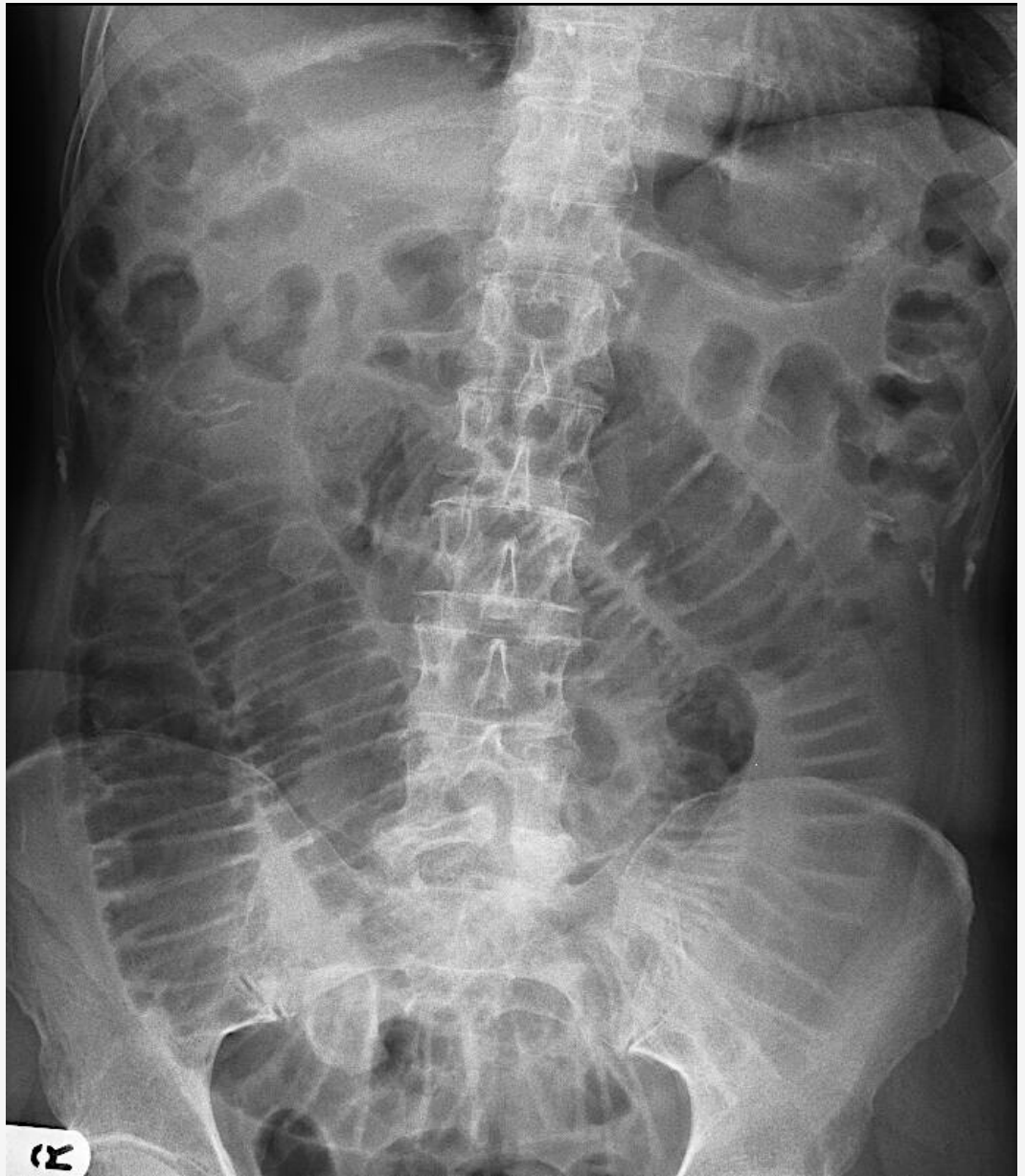
Small bowel

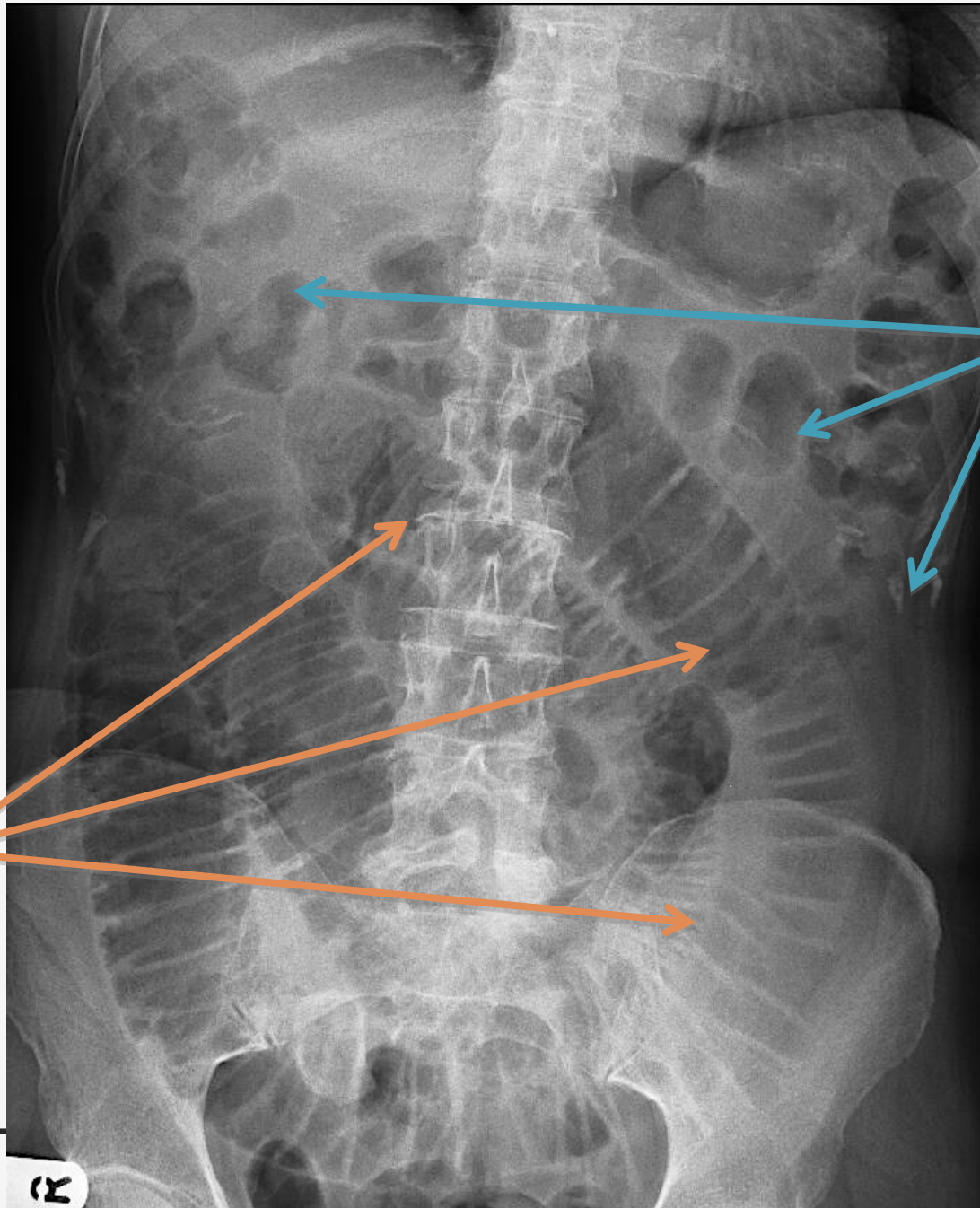
cecum

Descending colon

L

Where is the **small** bowel and where is the **large** bowel ?

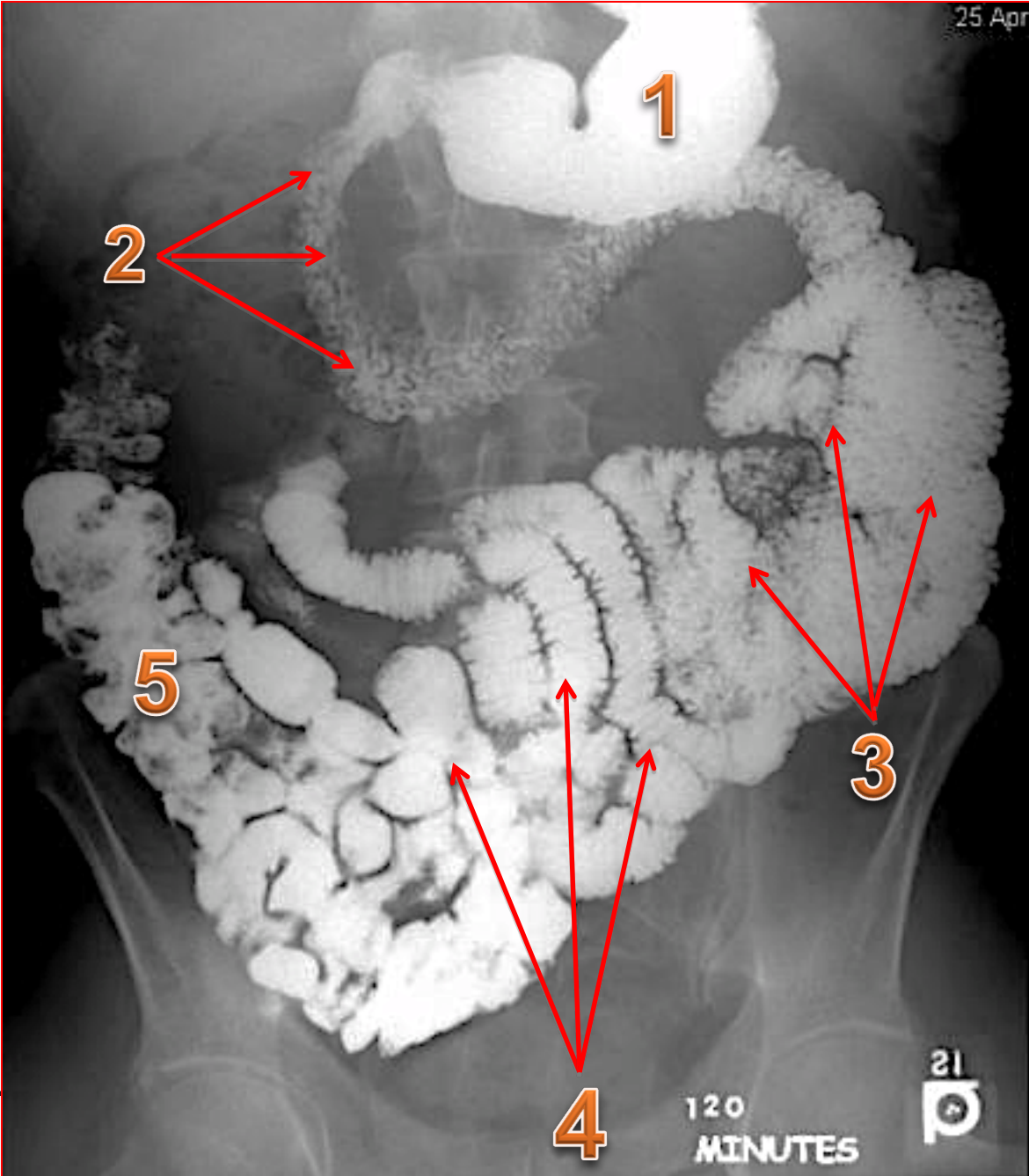


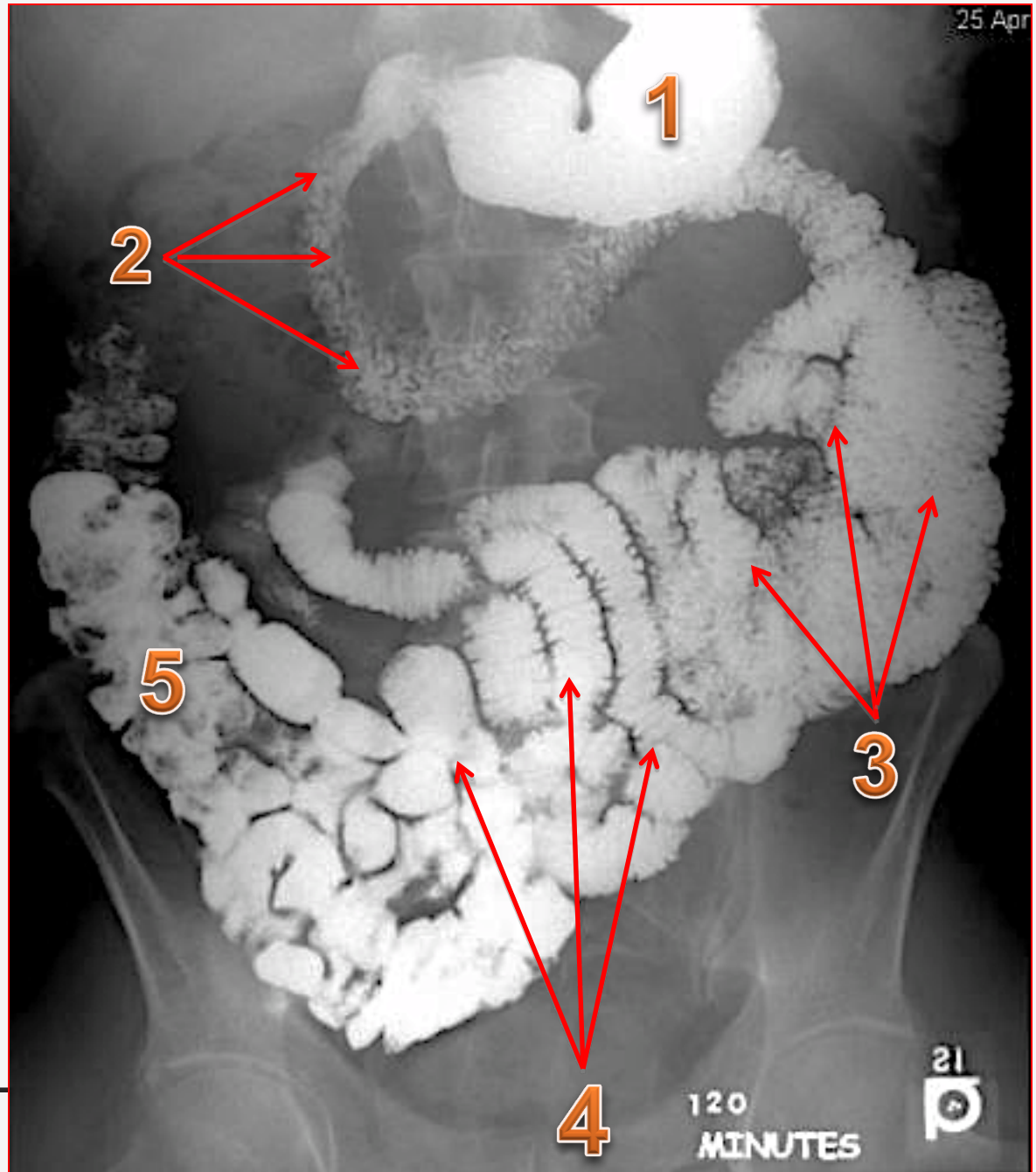


Large
bowel

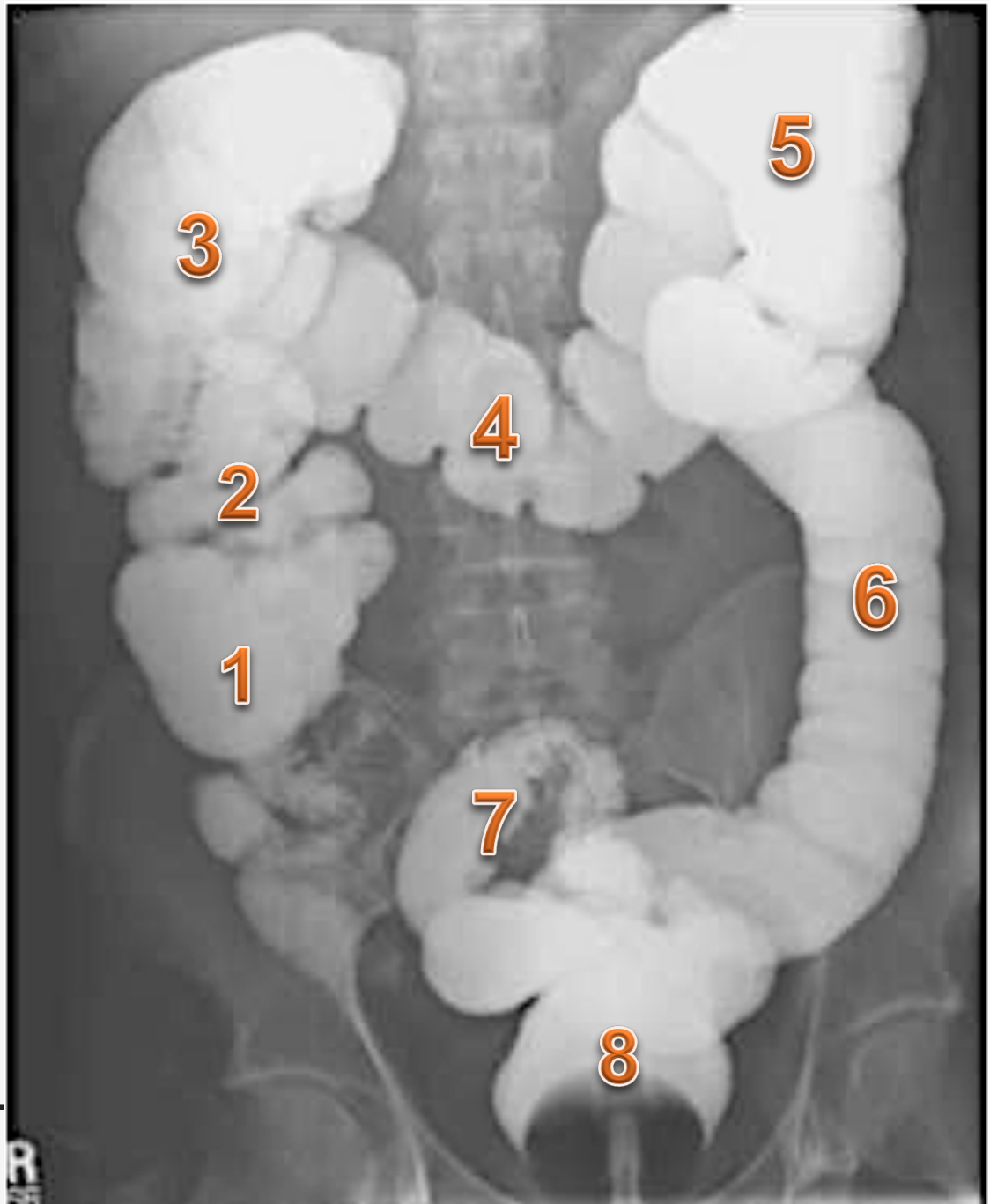
Small
bowel

(K)

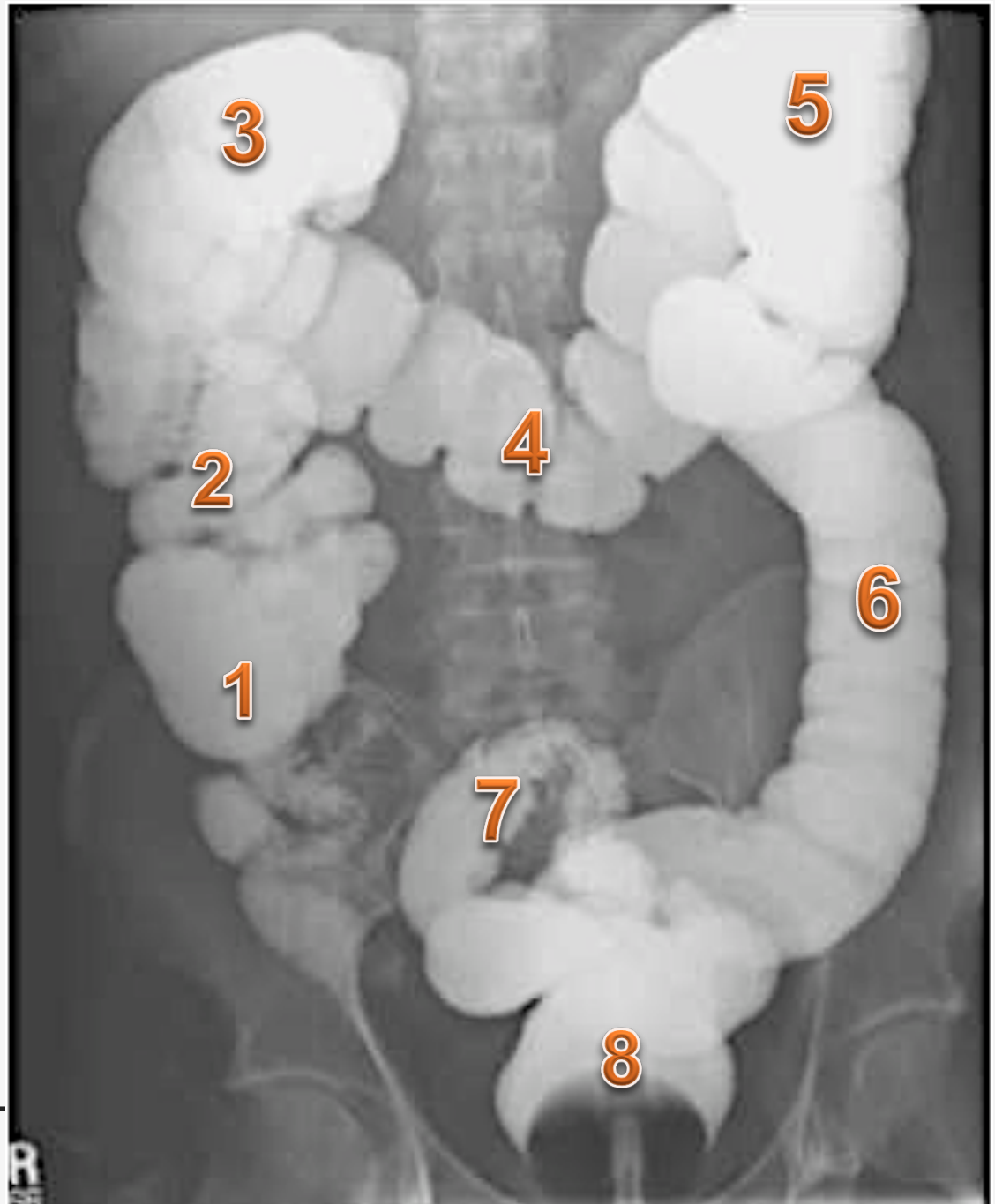




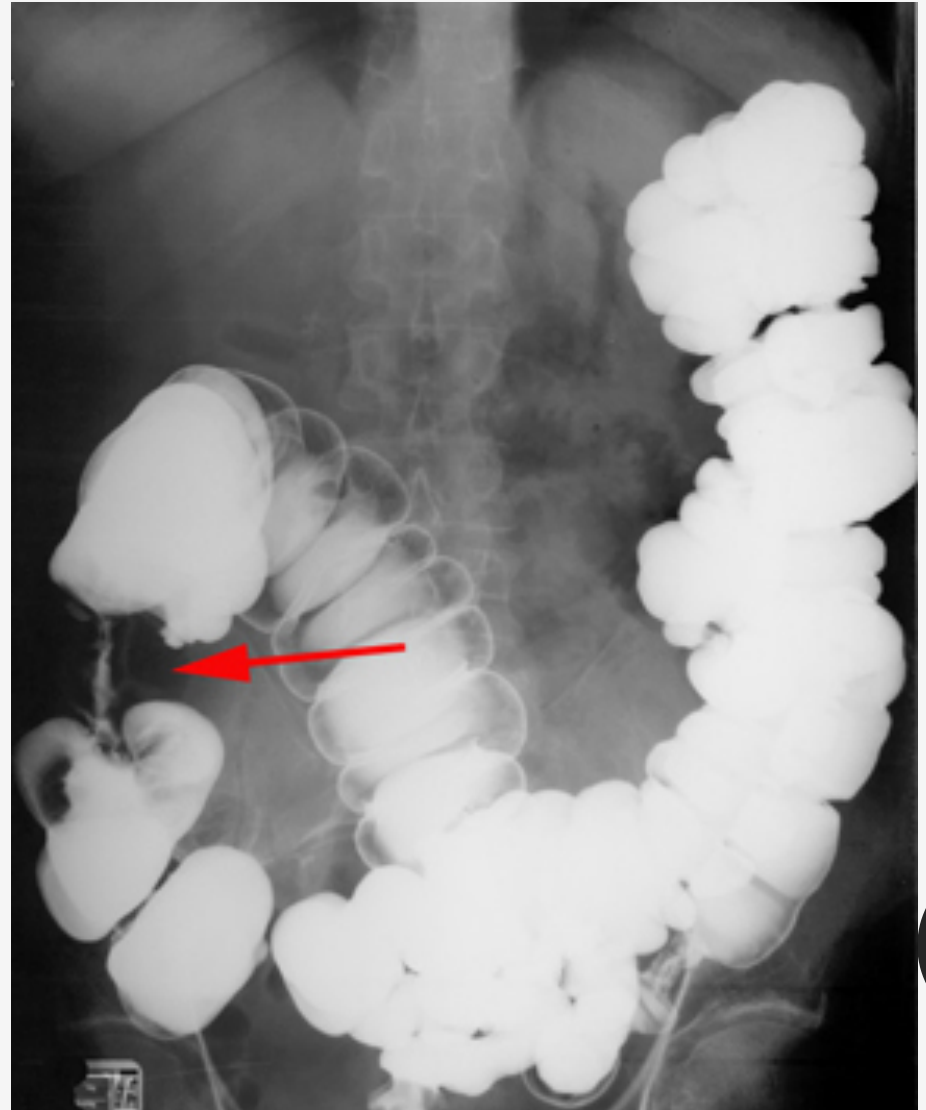
- 1- Stomach
- 2- Duodenum
- 3- Jejunum
- 4- Ileum
- 5- Cecum



1. Cecum
2. Ascending colon
3. Hepatic flexure
4. Transvers colon
5. Splenic flexure
6. Descending colon
7. Sigmoid colon
8. rectum

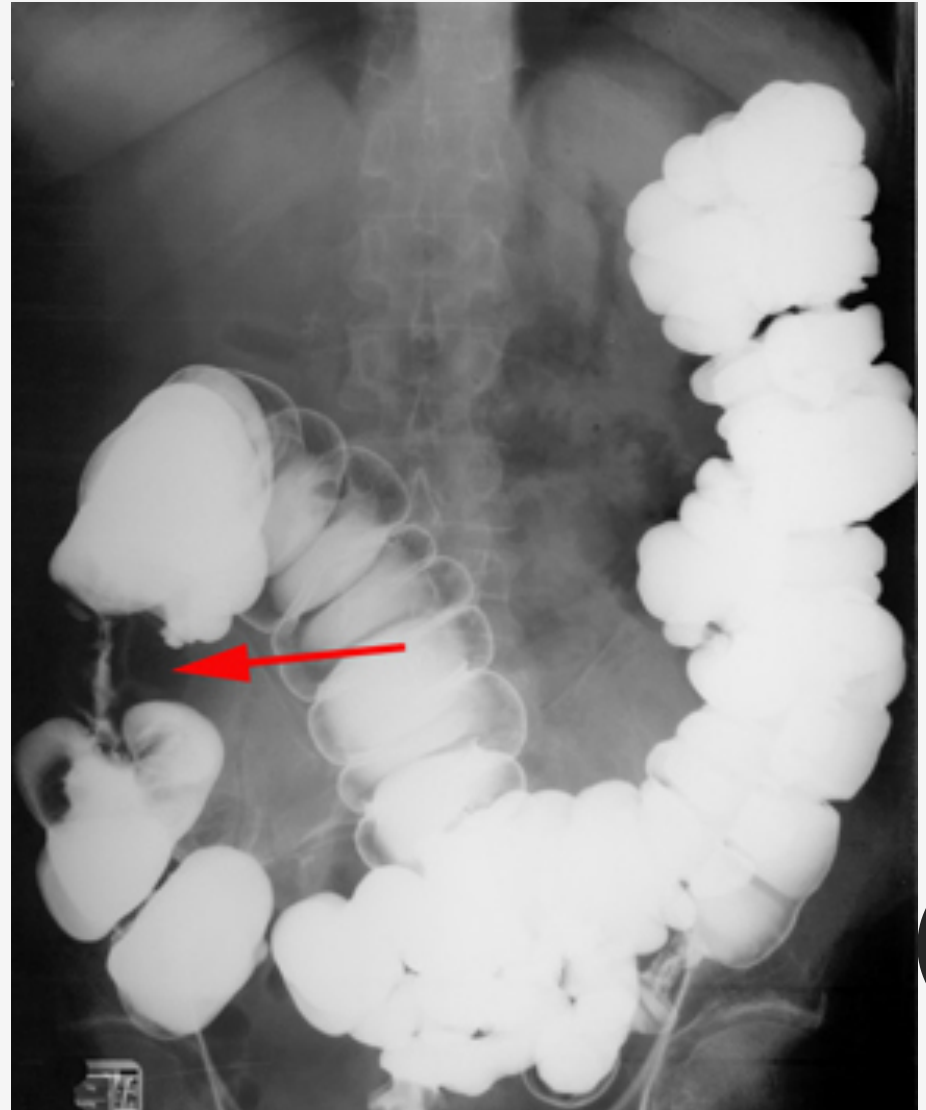


Is this study normal or abnormal? And why?



Abnormal study

Colon Cancer
(apple core sign)





Normal



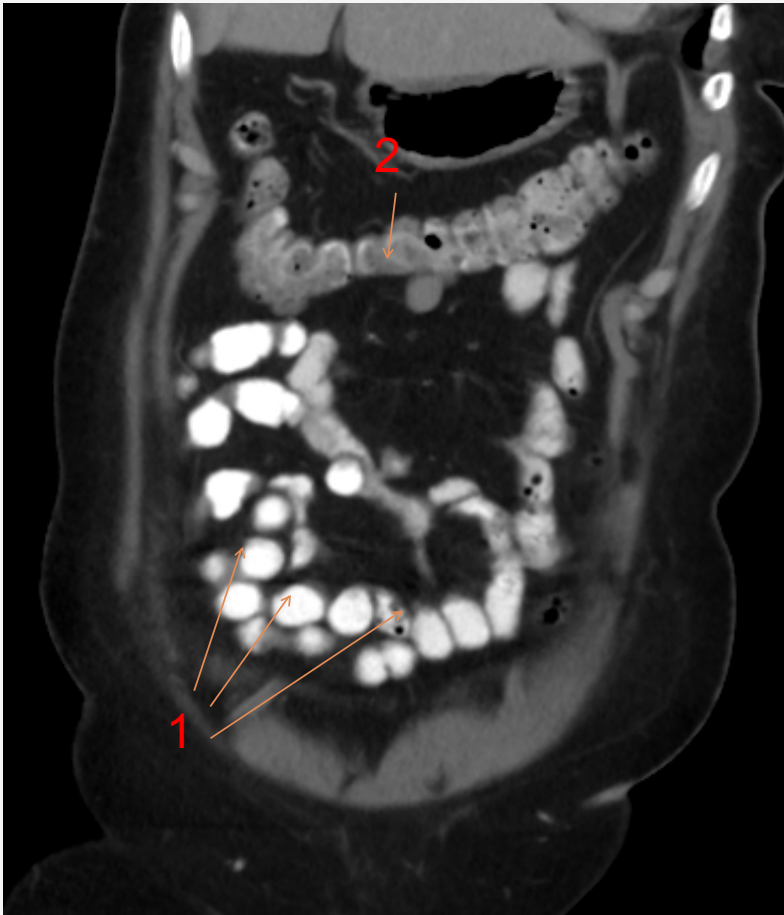
Abnormal

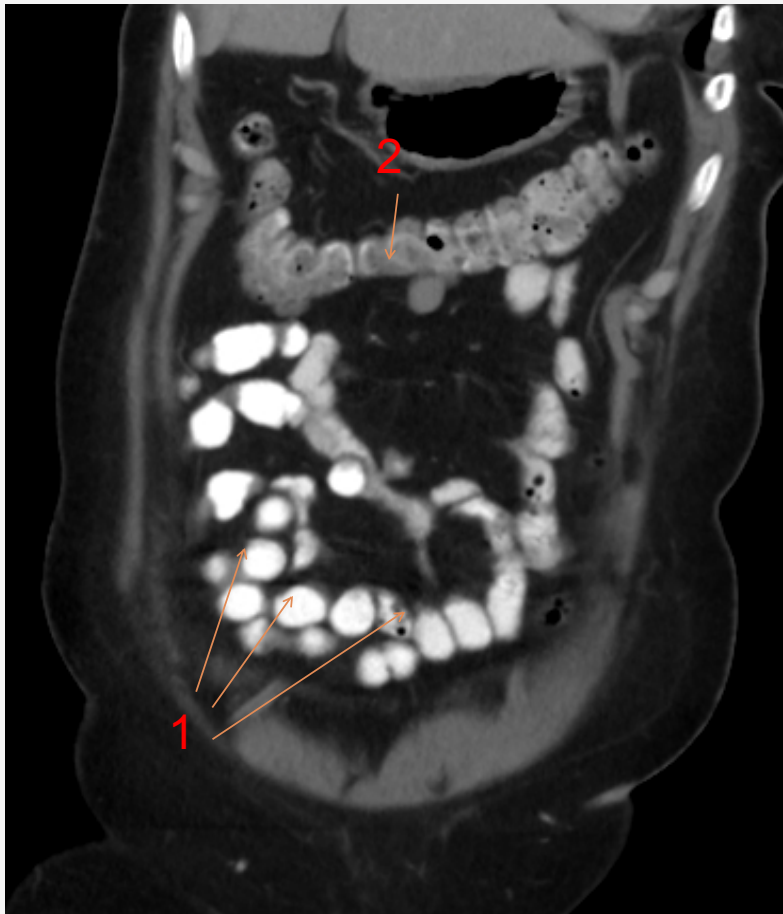
abnormal study
normal

Ulcerative colitis

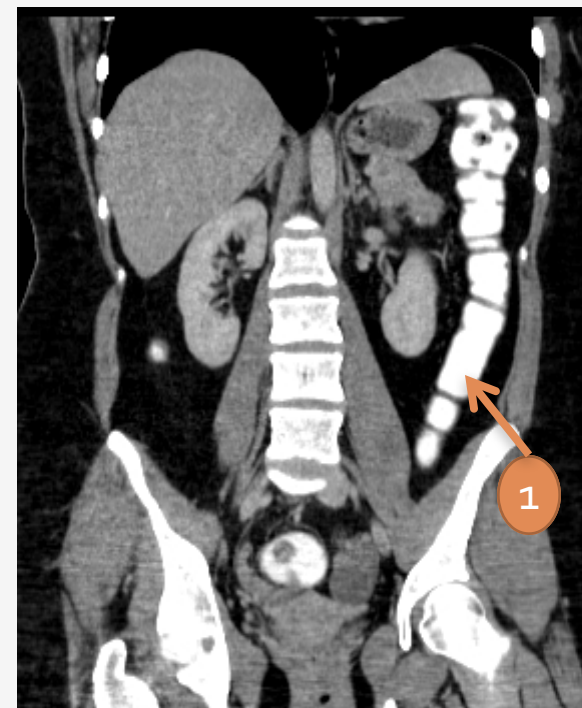
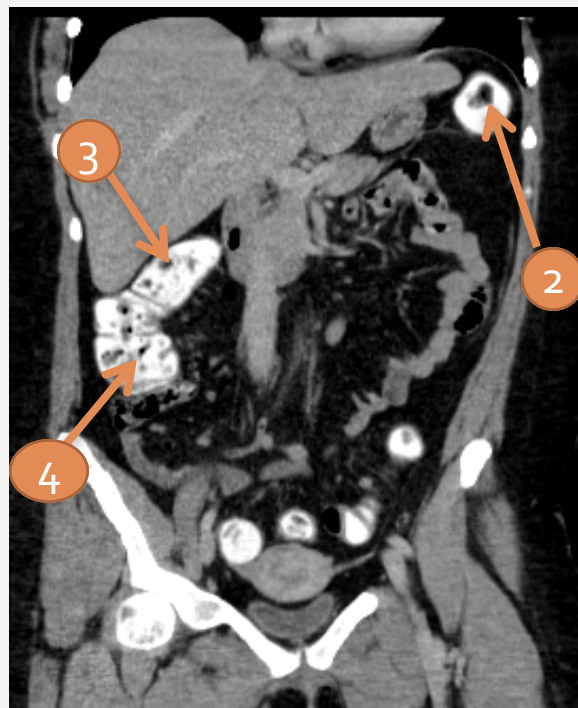
- Feature-less colon (lead pipe appearance)

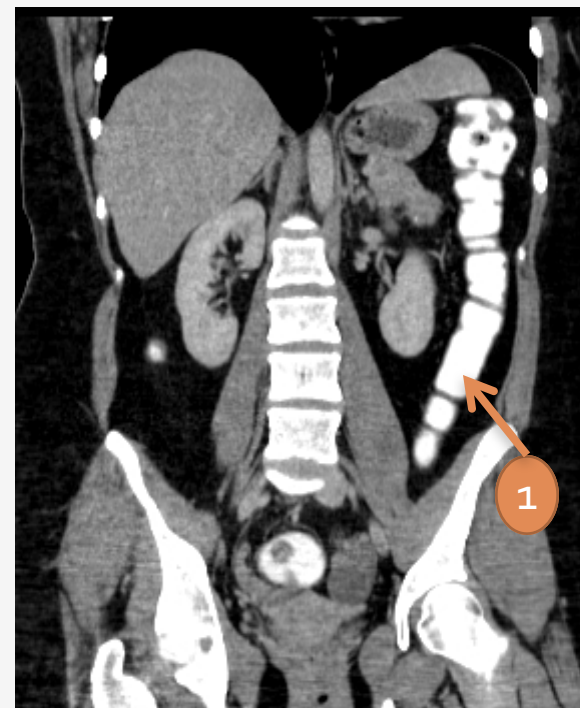
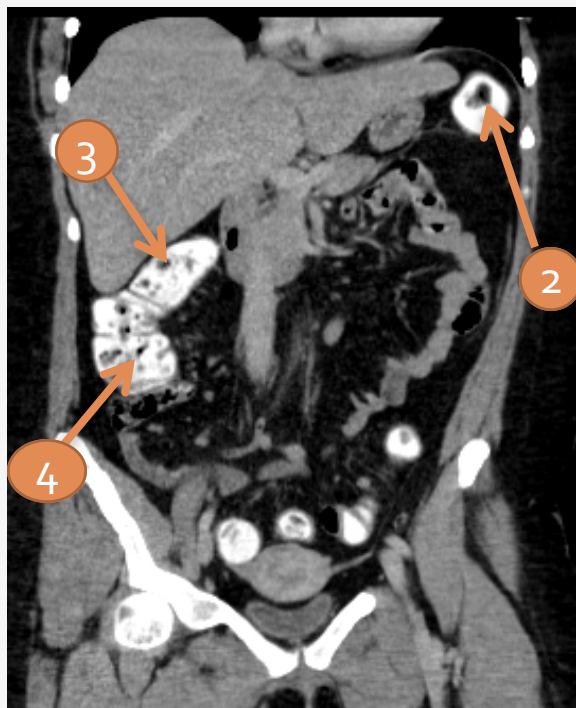




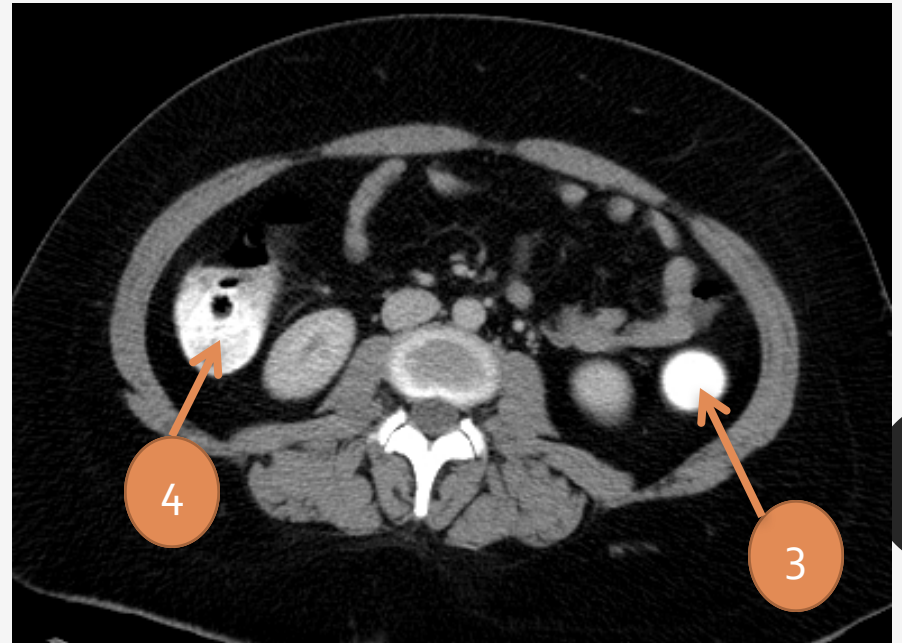
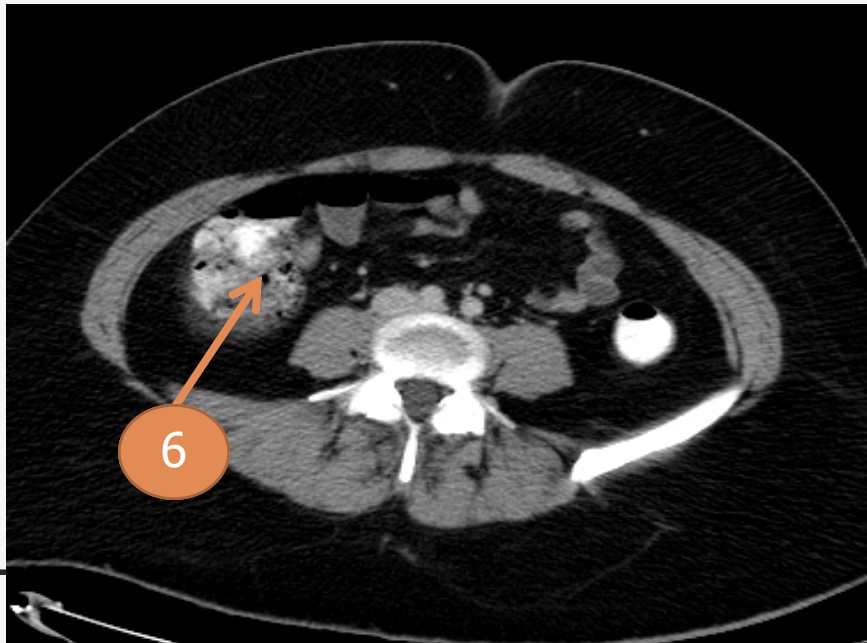
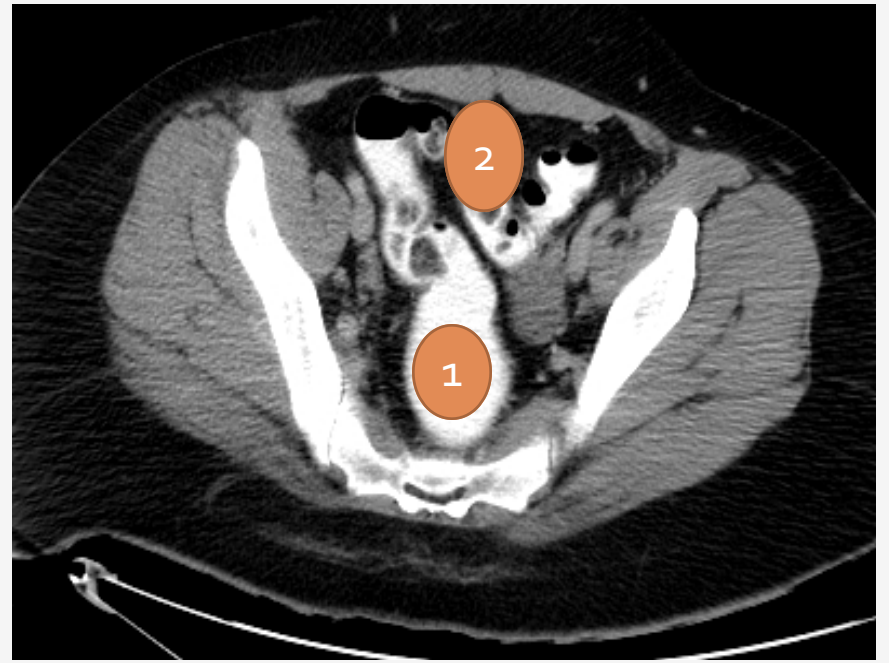
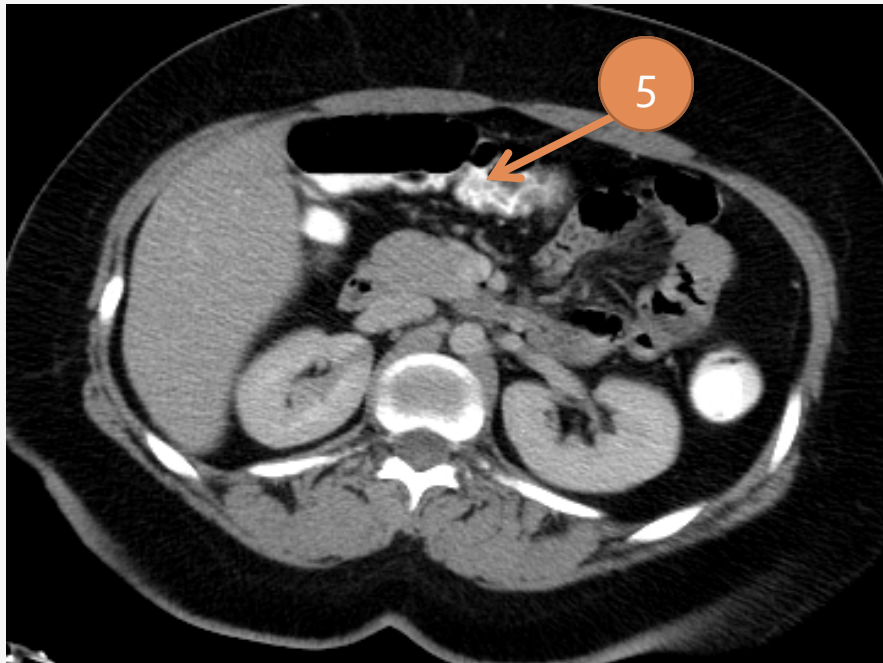


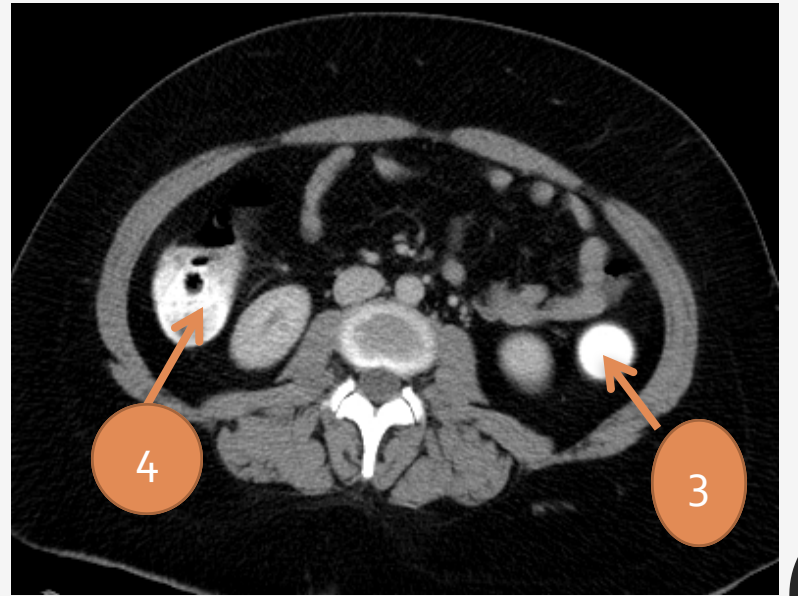
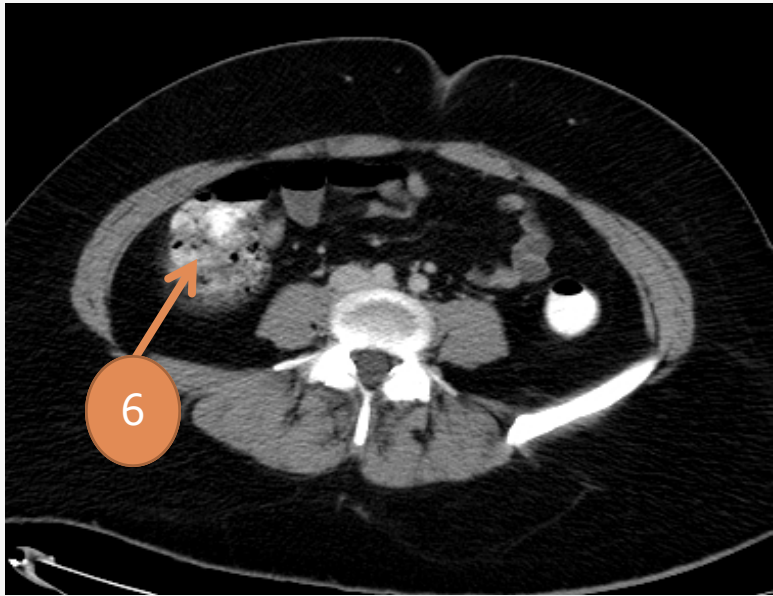
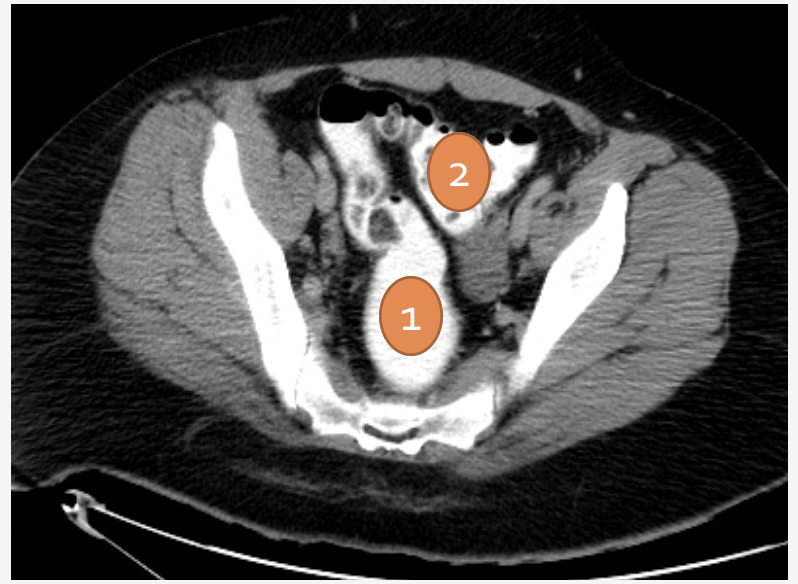
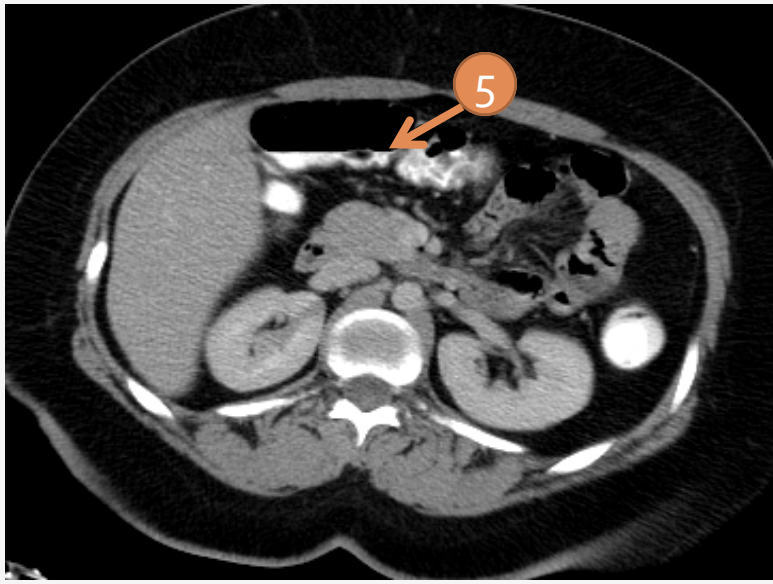
1. Ileum
 2. Transverse colon
 3. Jejunum
 4. Cecum
-





1. Descending colon
2. Splenic flexure
3. Hepatic flexure
4. Ascending colon
5. cecum
6. Sigmoid colon





1- Rectum

2-Sigmoid colon

3-Descending colon

4-Ascending colon

5-Transverse colon

6-Cecum

Thank you

