

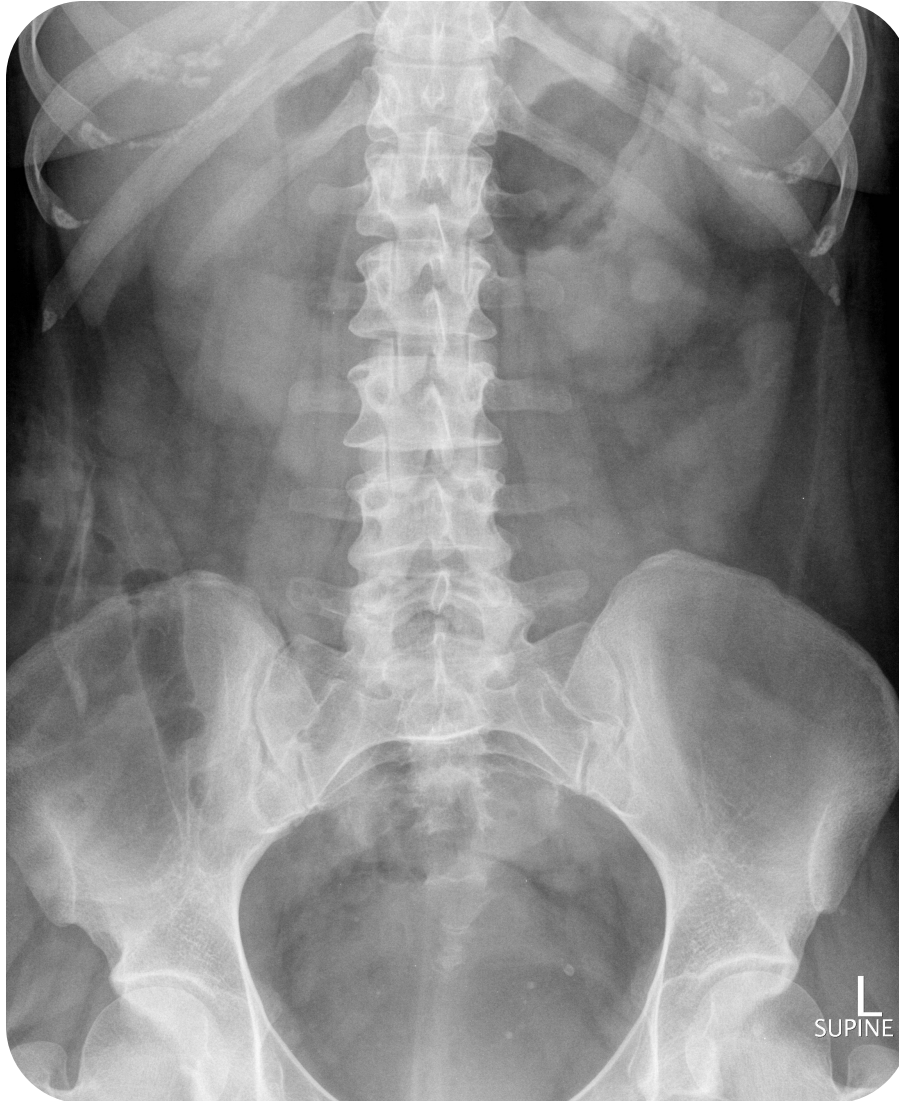
Liver, spleen, pancreas and biliary system.

Practical Session (3)
Radiology

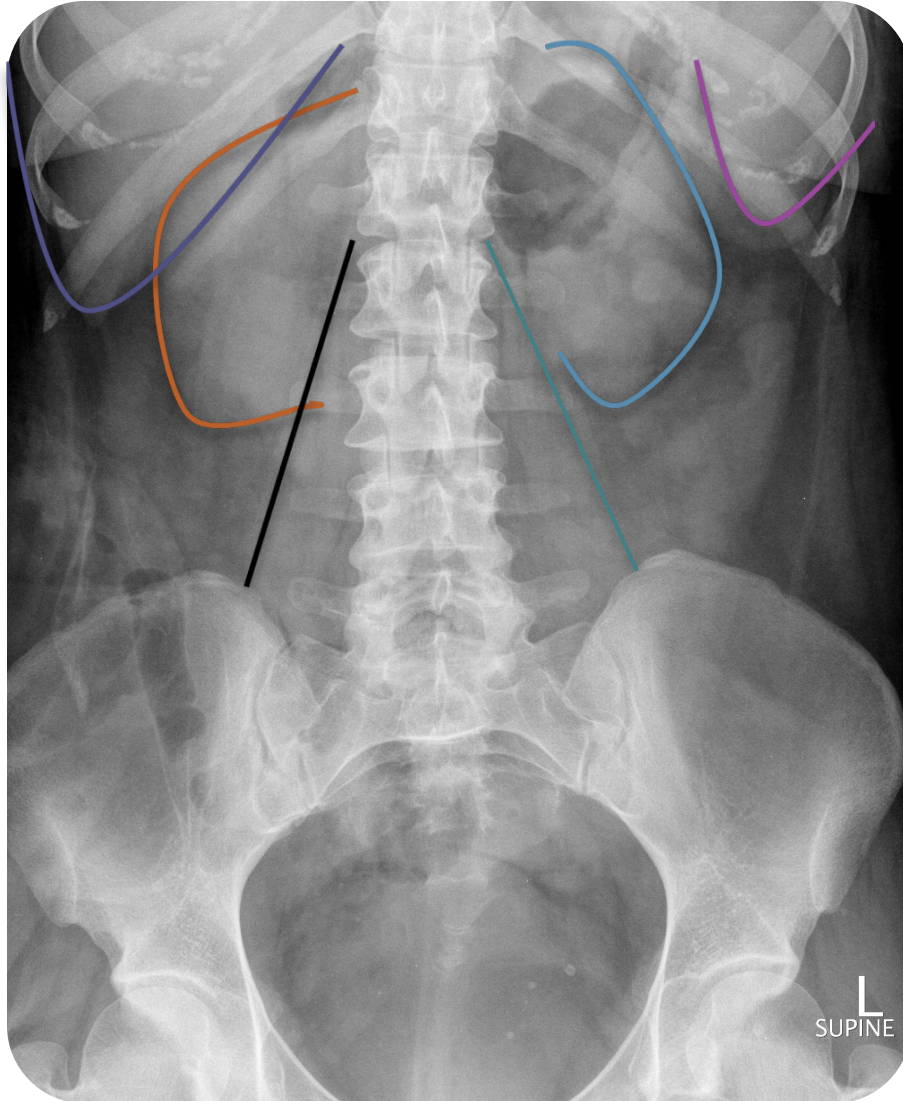
Introduction

- What are the radiology modalities that can be used to study solid abdominal organs?
- X-ray.
- US.
- CT.
- MRI.
- Nuclear Medicine.

X-ray

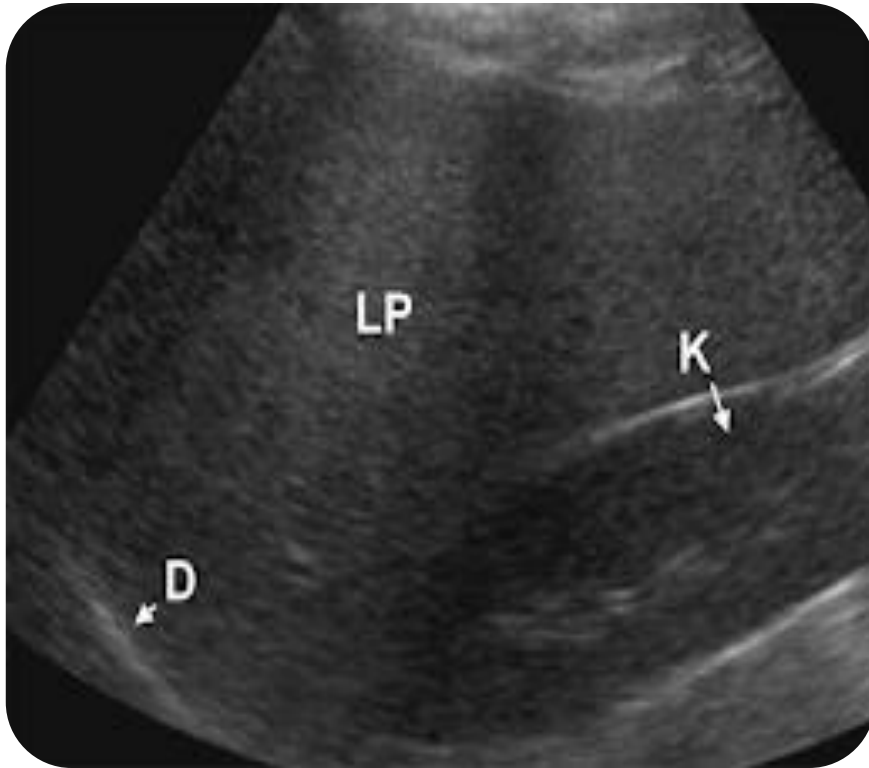


X-ray



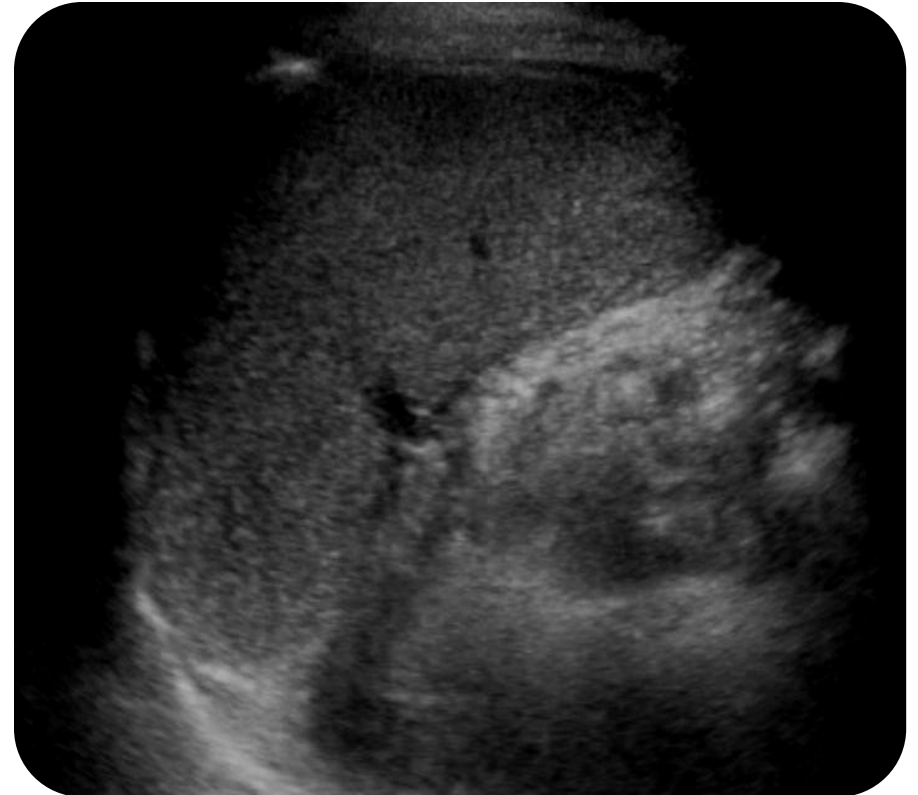
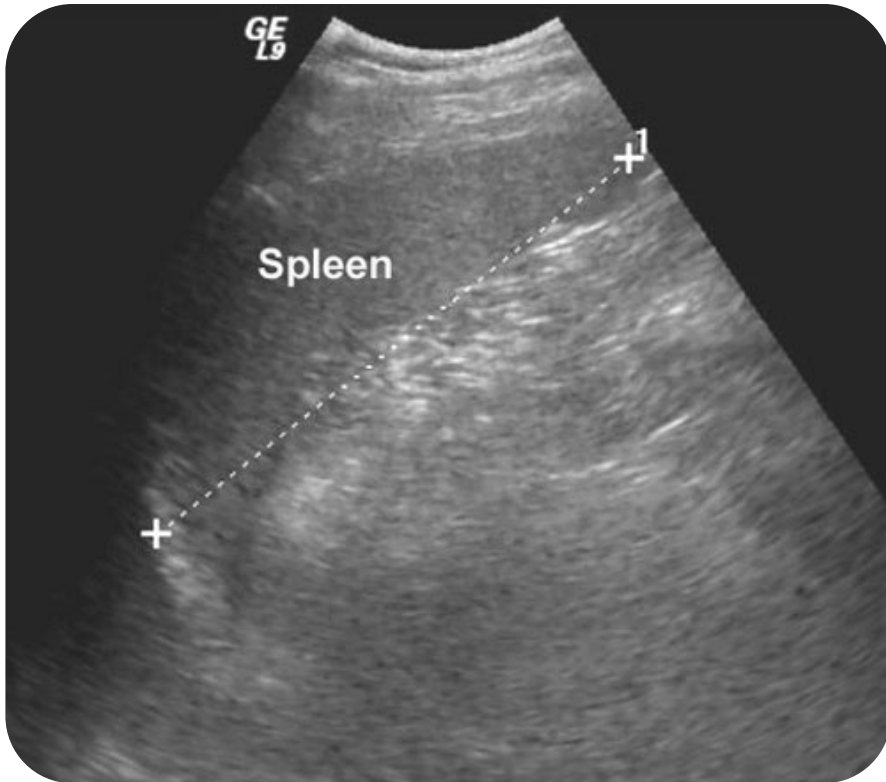
- liver
- spleen.
- Right kidney.
- Left kidney.
- Right psoas muscle.
- Left psoas muscle.

US liver



LP-liver parenchyma D-diaphragm K-right kidney

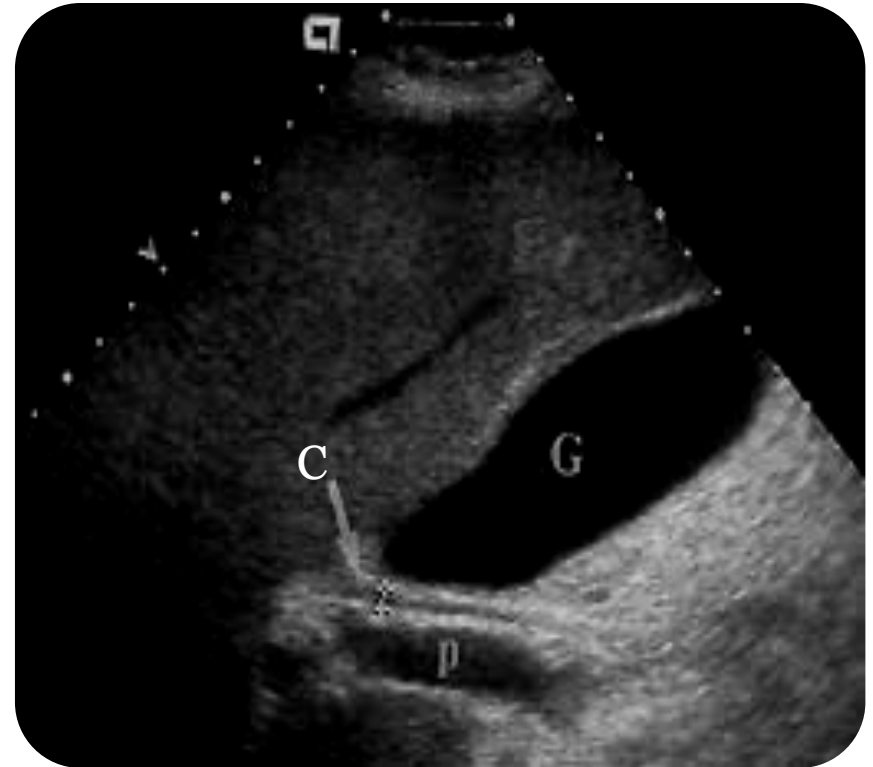
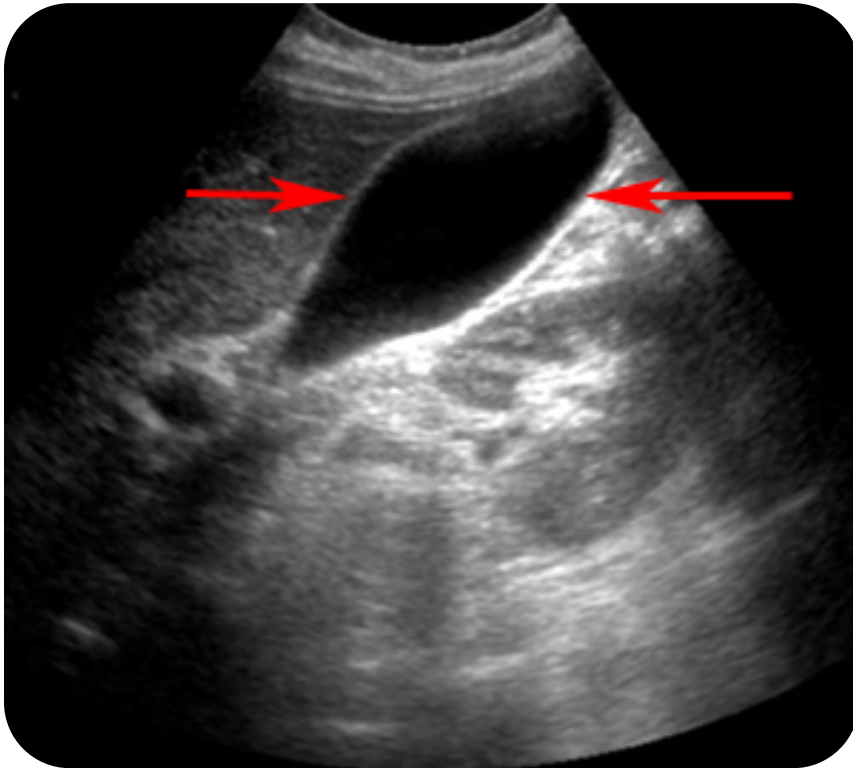
US spleen



US pancreas

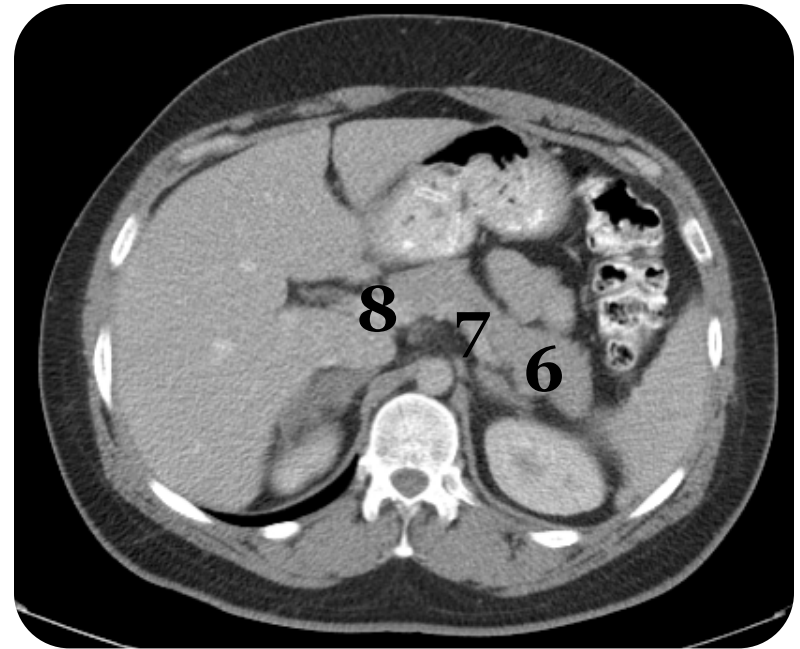
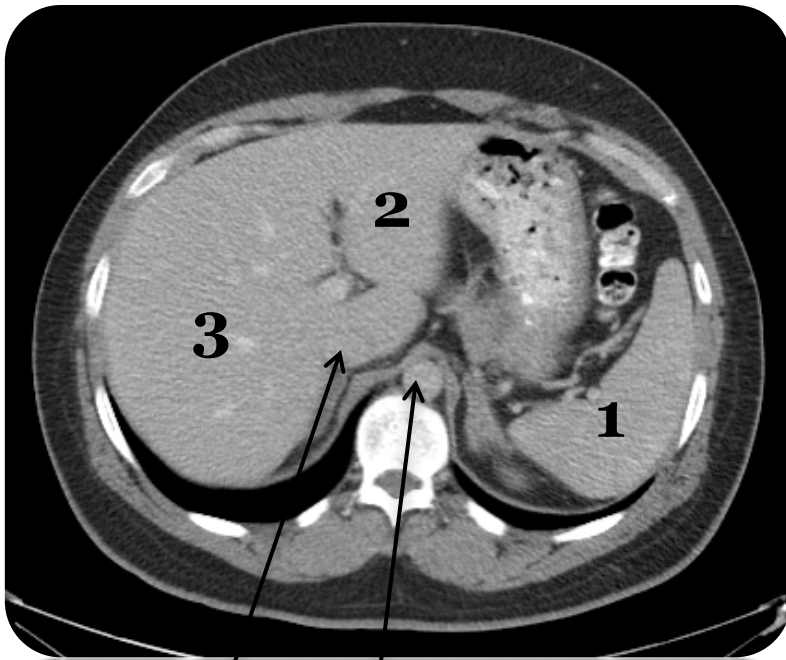


US biliary



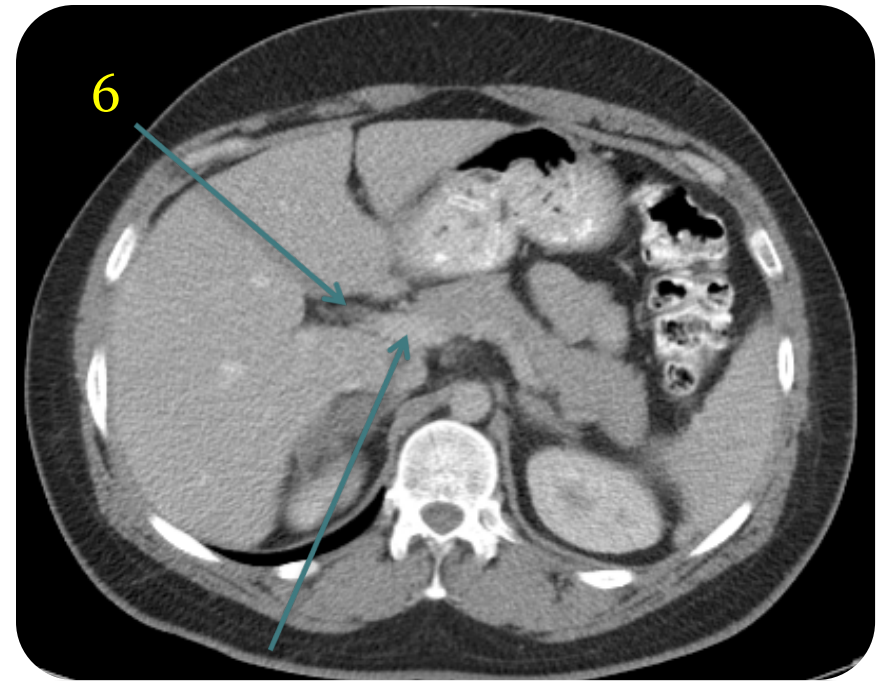
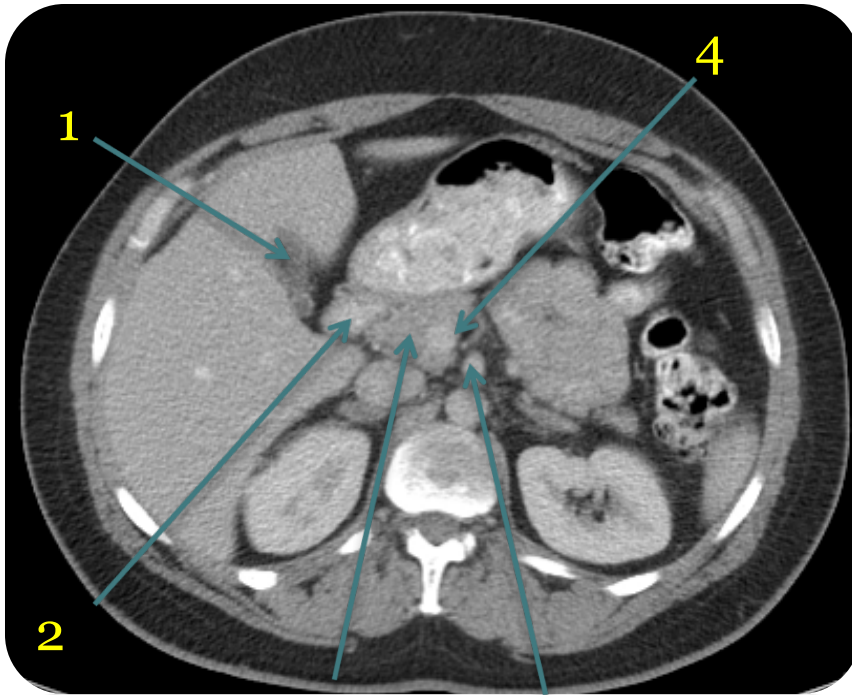
G- gall bladder P- portal vein C-common bile duct

CT Abdomen



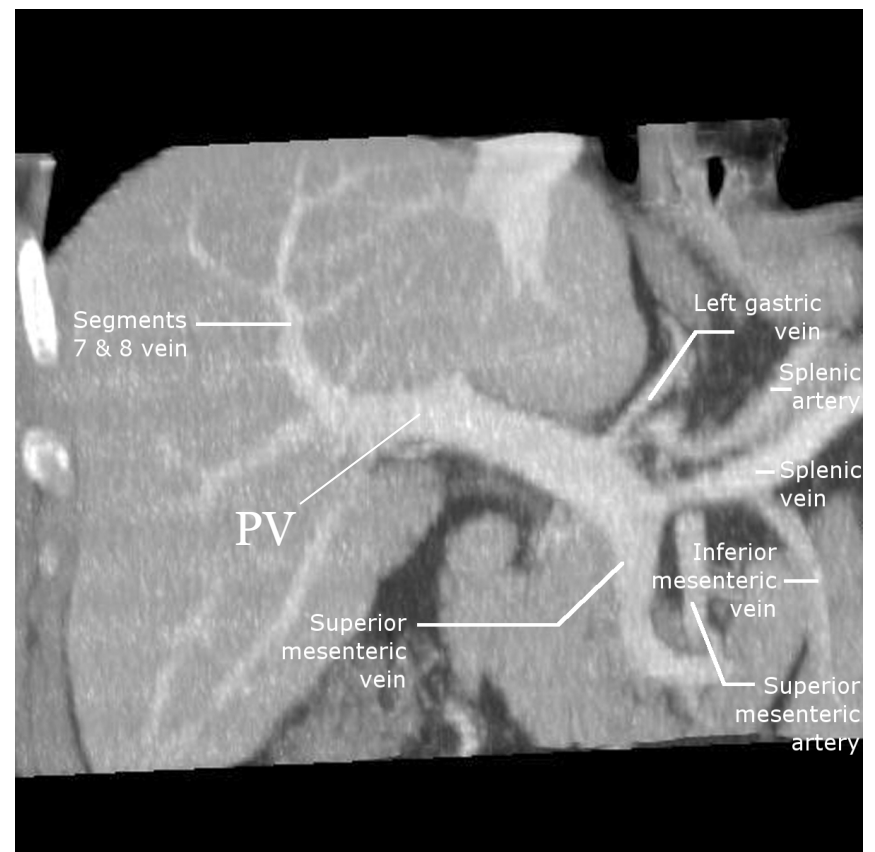
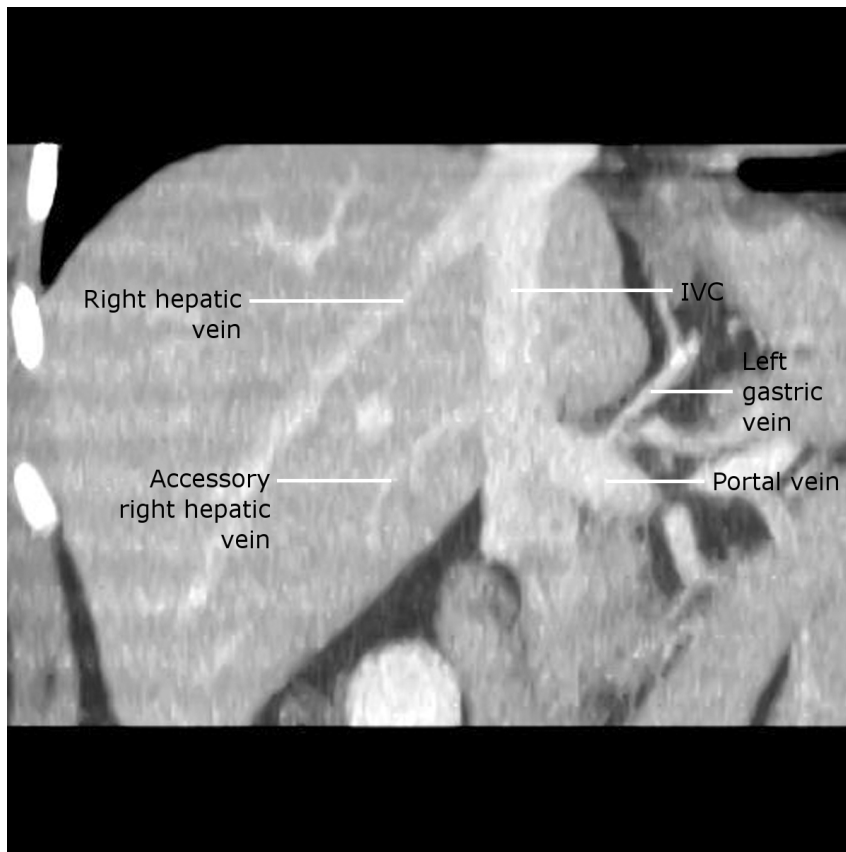
1-spleen 2-left liver lobe 3-right liver lobe 4-abdominal aorta 5-IVC.
6-pancreatic tail 7-pancreatic body 8-pancreatic head.

CT Abdomen

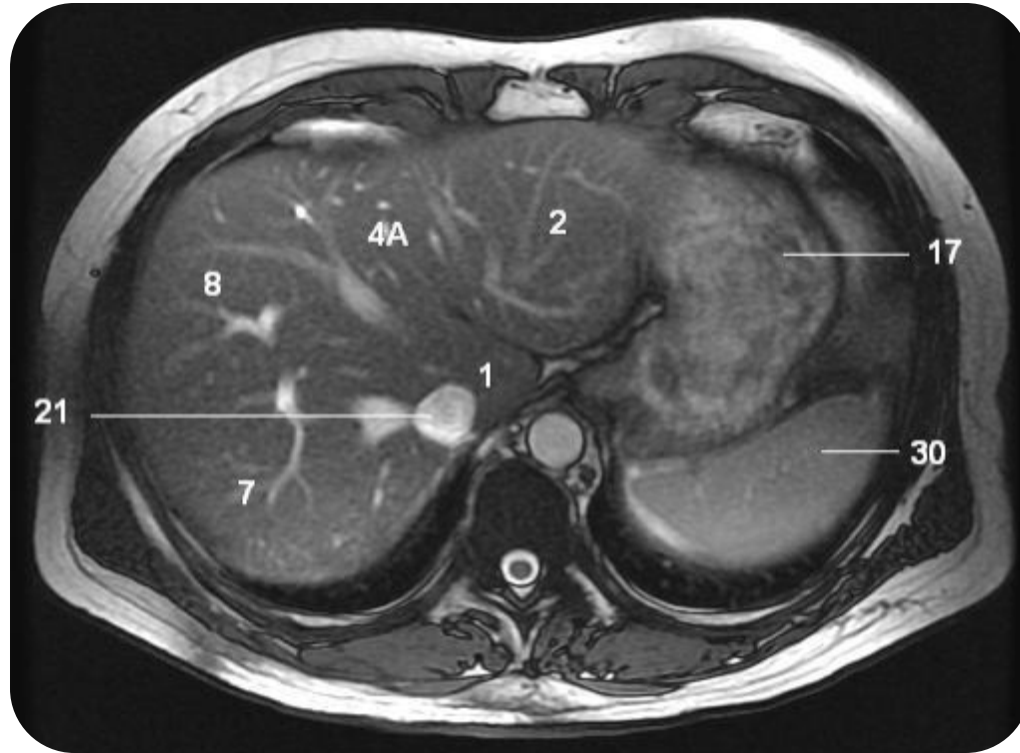


1-gall bladder 2-duodanum 3-pancreatic head 4-SMV 5-SMA
6-CBD 7-PV.

CT Liver

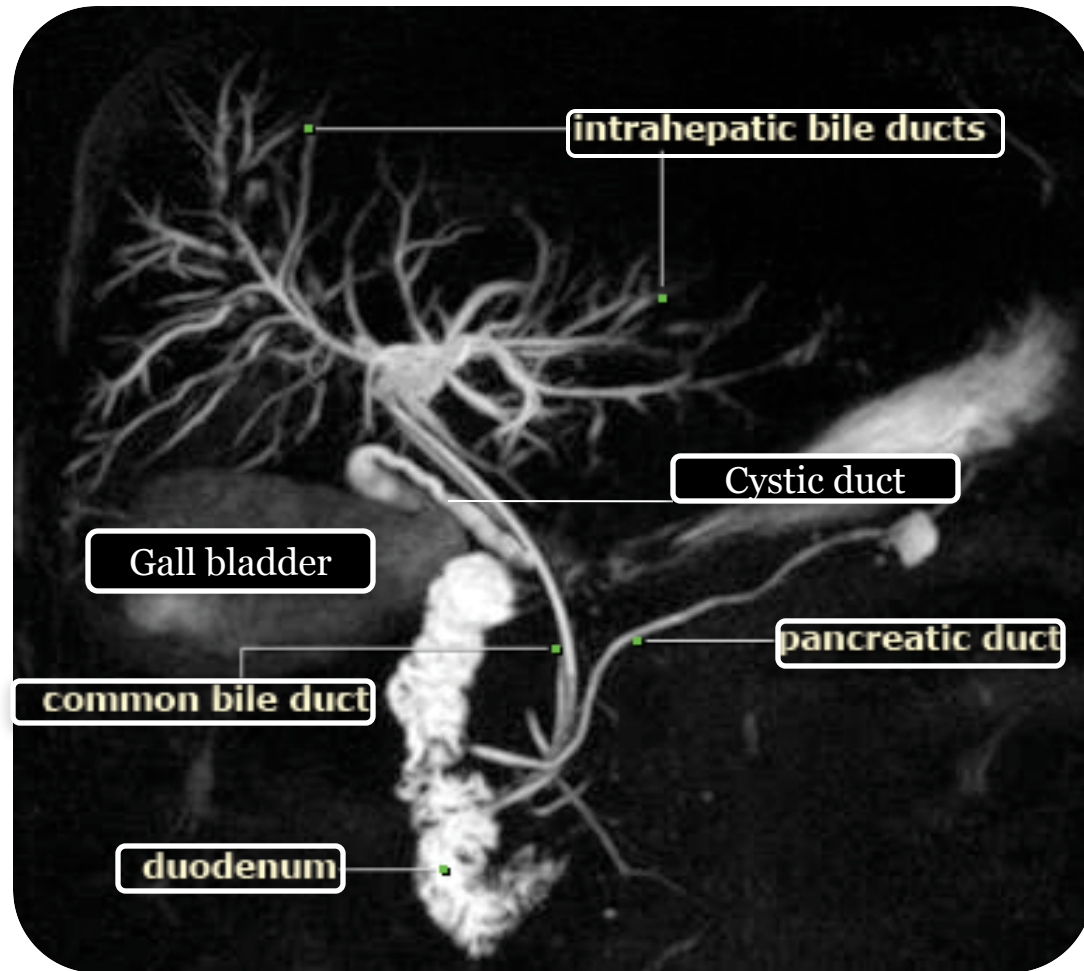


MRI Abdomen



17-stomach 21-IVC 30-spleen 1,2,4A, 7,8 liver segments

MRCP





Thank you