

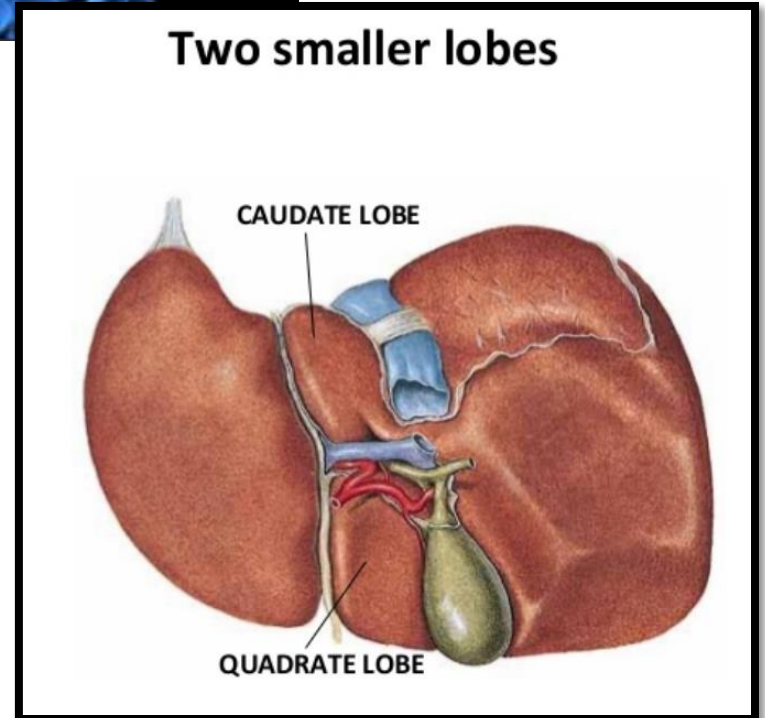
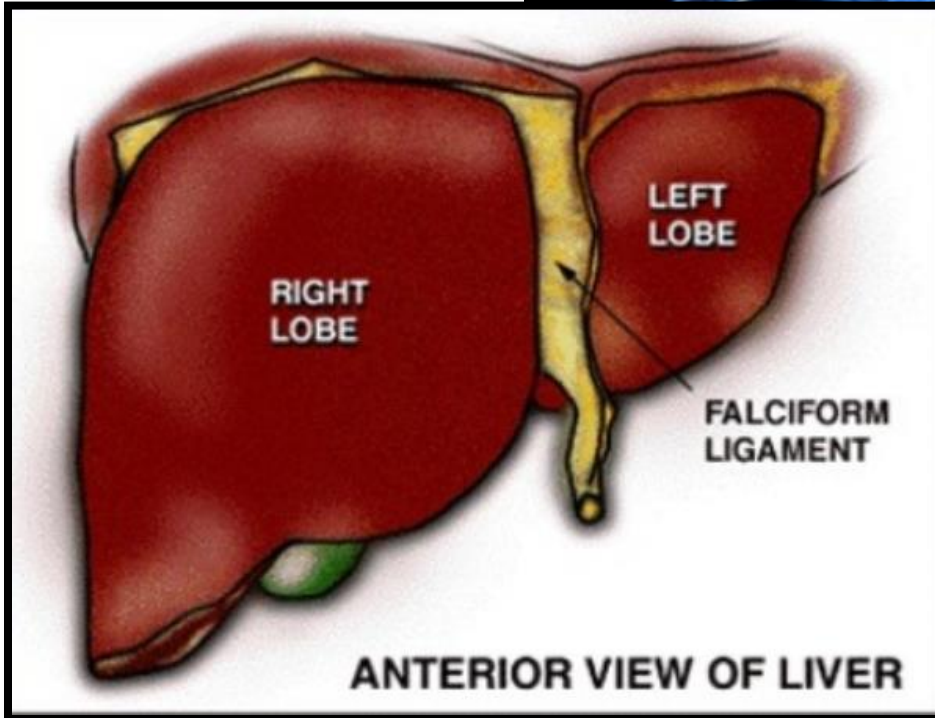
Liver Cirrhosis

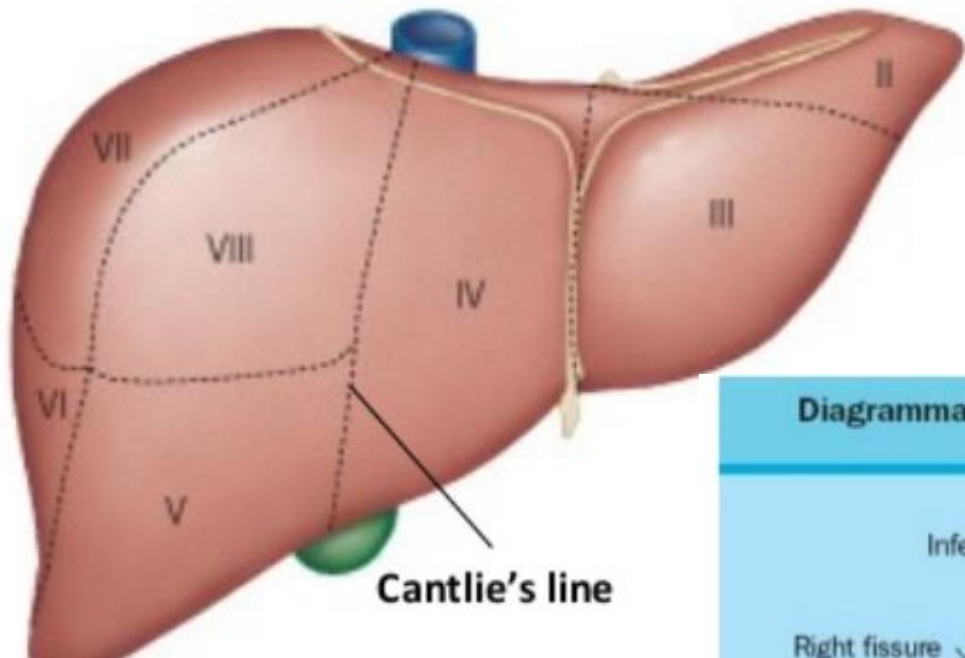
Liver cirrhosis

Objectives:

- Define Cirrhosis.
- Recognize the types of cirrhosis.
- Recognize the causes and the pathogenic mechanisms leading to cirrhosis.
- Describe the pathological findings in cirrhotic livers.

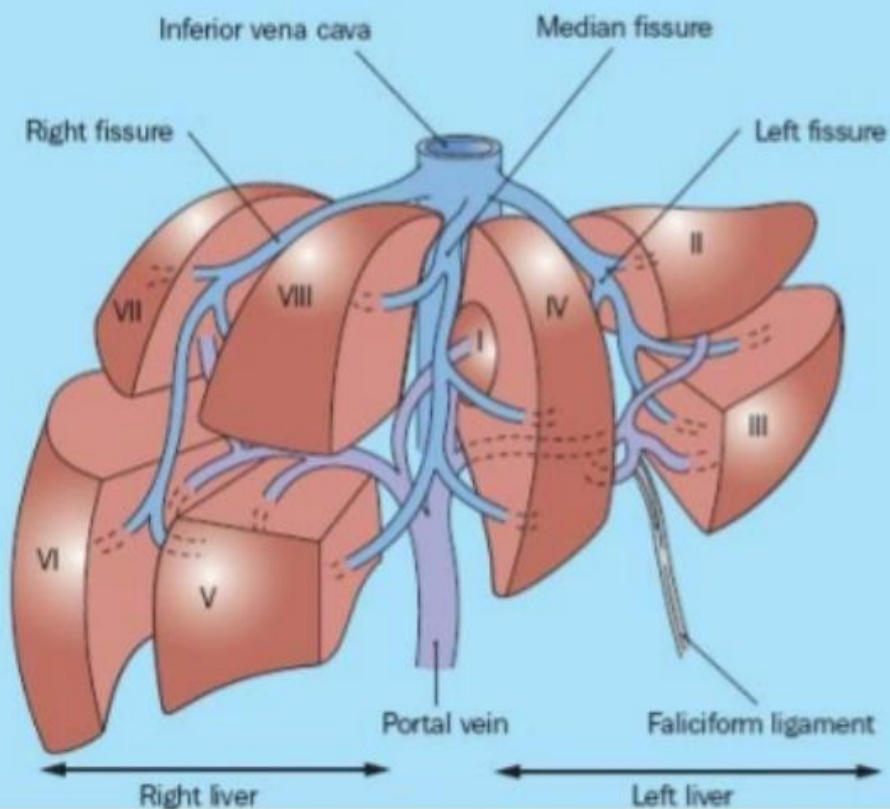
weighs 1400 to 1600 gm



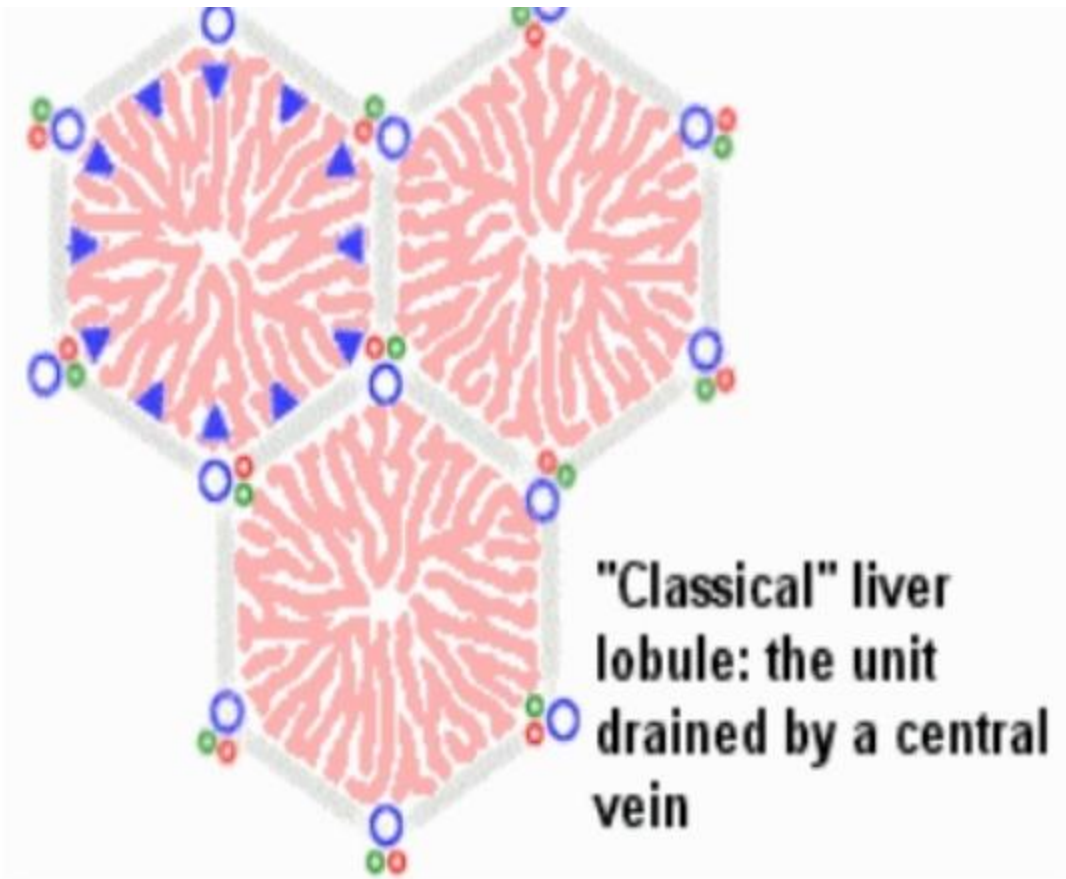
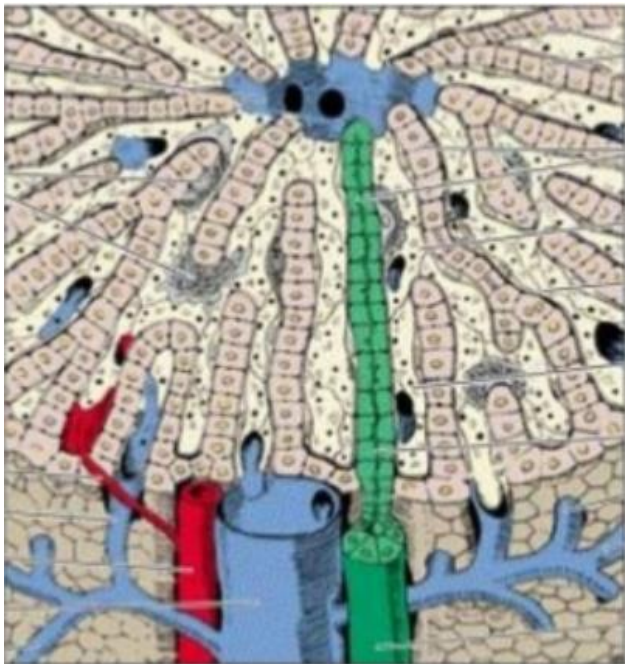


Cantlie's line

Diagrammatic representation of Couinaud liver segments



- **The blood** flows from **periphery to centre**.
- **Bile** flows from **centre to periphery**.



"Classical" liver lobule: the unit drained by a central vein

Cirrhosis

- **Cirrhosis refers to the diffuse transformation of the liver into regenerative parenchymal nodules surrounded by fibrous bands**
- **It is among the top 10 causes of death in the Western world.**
- **It is the end-stage of chronic liver disease**
 - **The chief worldwide causes are:**
 - I. alcohol abuse
 - II. viral hepatitis
 - **Other causes include:**
 1. biliary disease
 2. iron overload

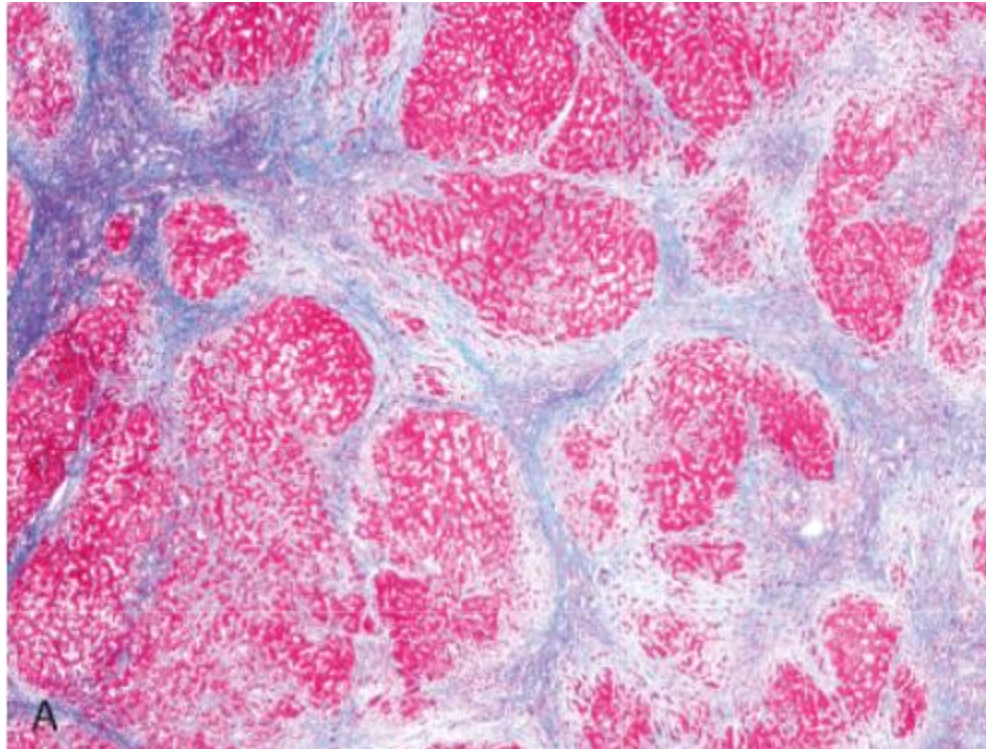
Cirrhosis

Cirrhosis is defined by three characteristics

- 1) *Fibrosis* in the form of delicate bands or broad scars/septae
- 2) *Nodules* containing regenerating hepatocytes encircled by fibrosis, with diameters varying from very small (<3 mm, micronodules) to large (several centimeters, macronodules)
- 3) *Disruption of the architecture of the entire liver*

Features of cirrhosis

- *Vascular architecture is reorganized* by the parenchymal damage and scarring, with the formation of abnormal interconnections between vascular inflow and hepatic vein outflow channels
- *Fibrosis is the key feature of progressive damage to the liver.* Once cirrhosis has developed, reversal is thought to be rare



Classification of cirrhosis

- **The classification is based on the underlying etiology.**
- **Many forms of cirrhosis (particularly alcoholic cirrhosis) are initially micronodular, but there is a tendency for nodules to increase in size with time.**

Classification of cirrhosis based on causes

- **Alcoholic liver disease** 60% to 70%
- **Viral hepatitis** 10%
- **Biliary diseases** 5% to 10%
- **Primary hemochromatosis** 5%
- **Wilson disease** Rare
- **α 1-Antitrypsin deficiency** Rare
- **Cryptogenic cirrhosis** 10% to 15%

Classification of cirrhosis

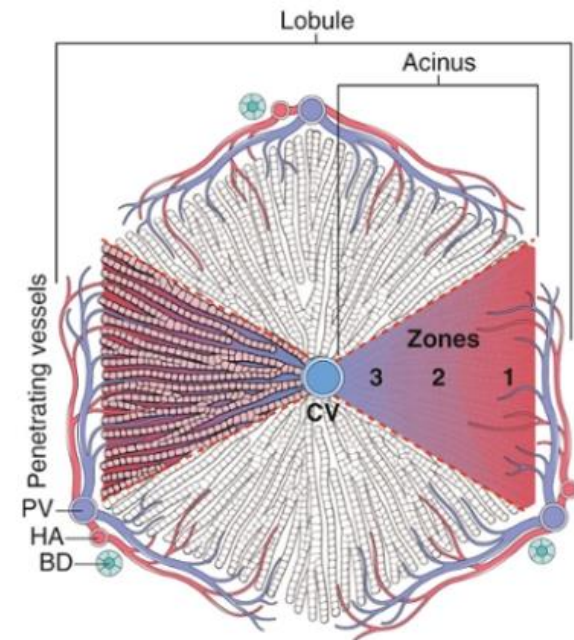
Other infrequent types of cirrhosis :

- The cirrhosis developing in infants and children with galactosemia and tyrosinosis
- drug-induced cirrhosis.
- Severe fibrosis can occur in the setting of cardiac disease; called "**cardiac cirrhosis**"
- In some cases there is no cause and these are referred to as *cryptogenic cirrhosis*
- *Once cirrhosis is established, it is usually impossible to establish an etiologic diagnosis on morphologic grounds alone*

Pathogenesis of cirrhosis

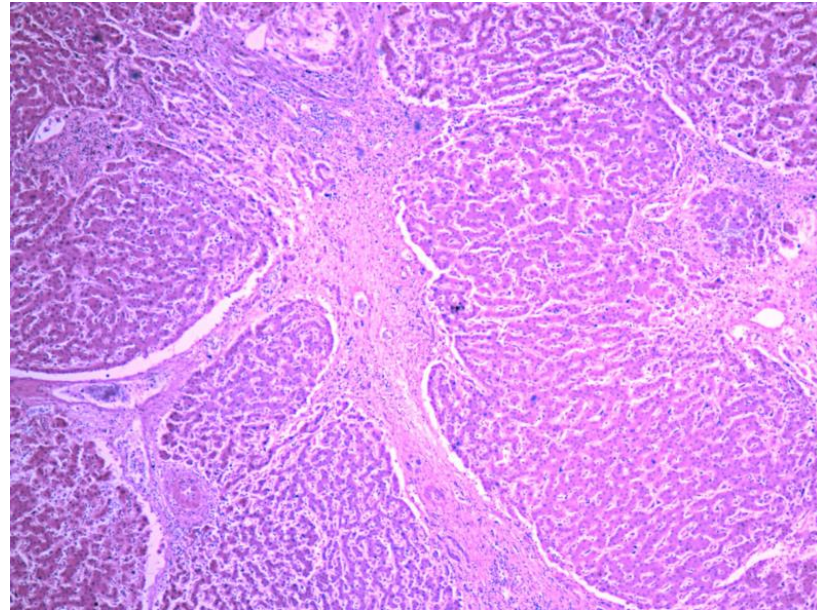
- The pathogenic processes in cirrhosis are progressive fibrosis and reorganization of the vascular microarchitecture of the liver

In the normal liver, interstitial collagens (types I and III) are concentrated in portal tracts and around central veins. The type IV collagen (reticulin) is in the space of Disse.



Pathogenesis of cirrhosis

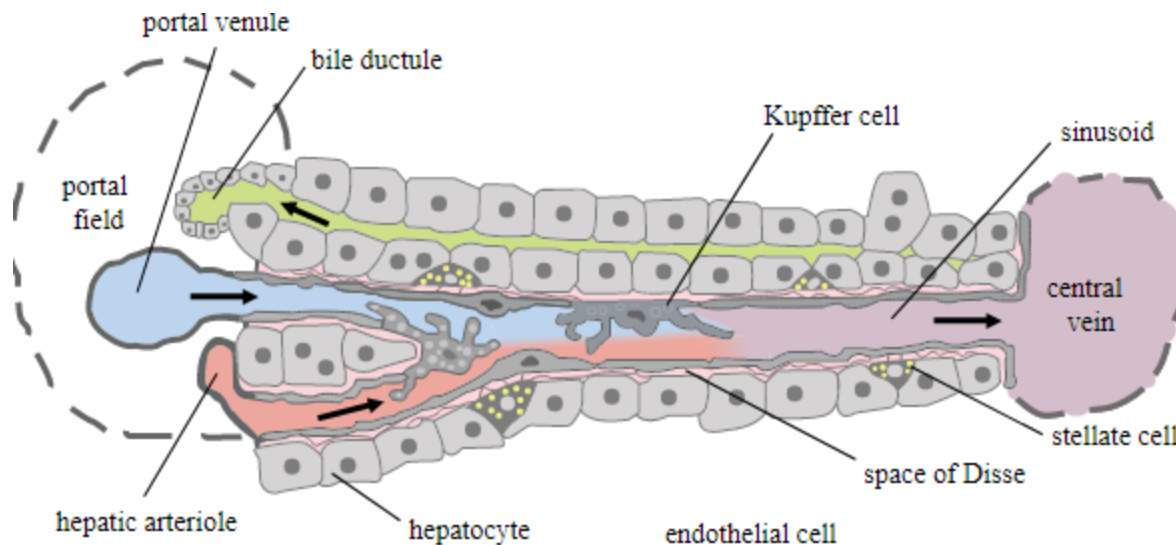
- In cirrhosis, types I and III collagen are deposited in the lobule, creating delicate or broad septal tracts.



There is loss of fenestrations in the sinusoidal endothelial cells (capillarization of sinusoids, that is the sinusoidal space comes to resemble a capillary rather than a channel for exchange of solutes between hepatocytes and plasma)

Pathogenesis of cirrhosis

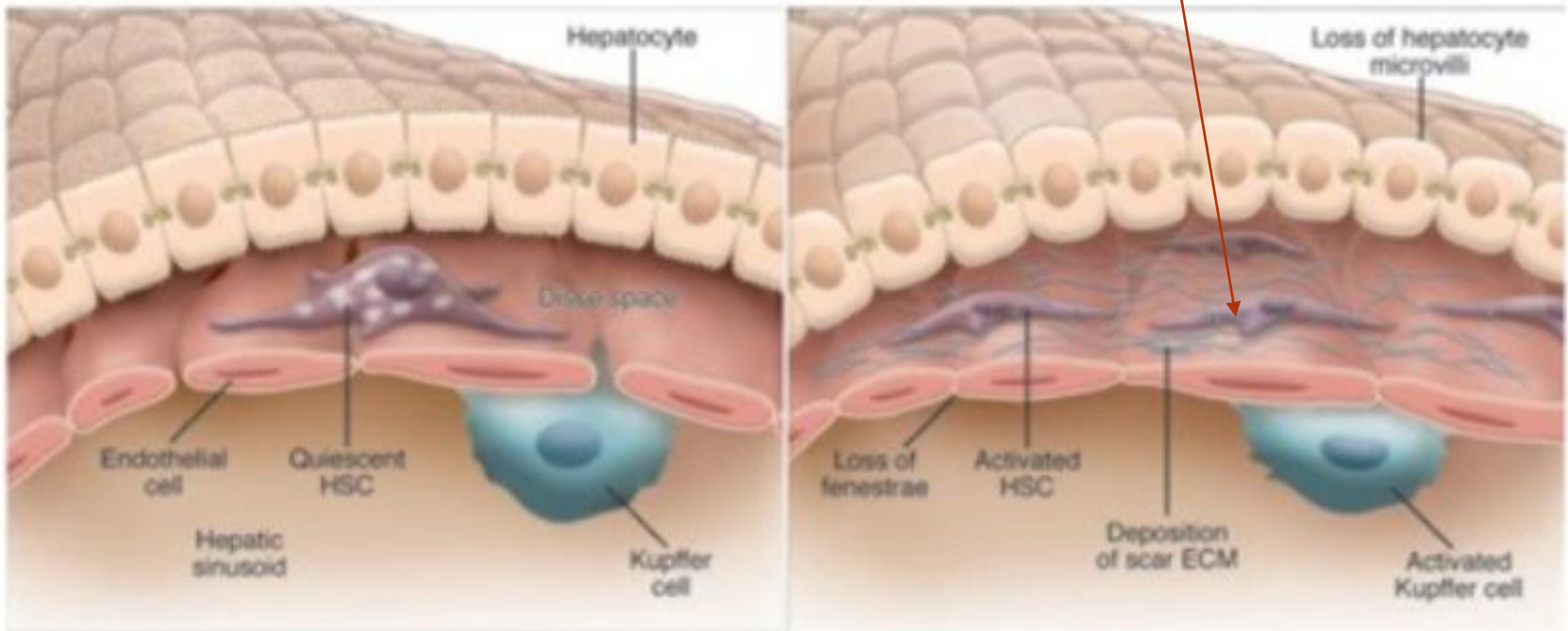
- The major source of excess collagen in cirrhosis is the perisinusoidal stellate cells (**Ito cells**), which lie in the space of Disse.
- Although Ito cells normally function is a **vitamin A fat-storing cells**, during the development of cirrhosis they become activated and transform into myofibroblast-like cells.



Ito cells produce collagen

Healthy Liver

Injured Liver



Pathogenesis of cirrhosis

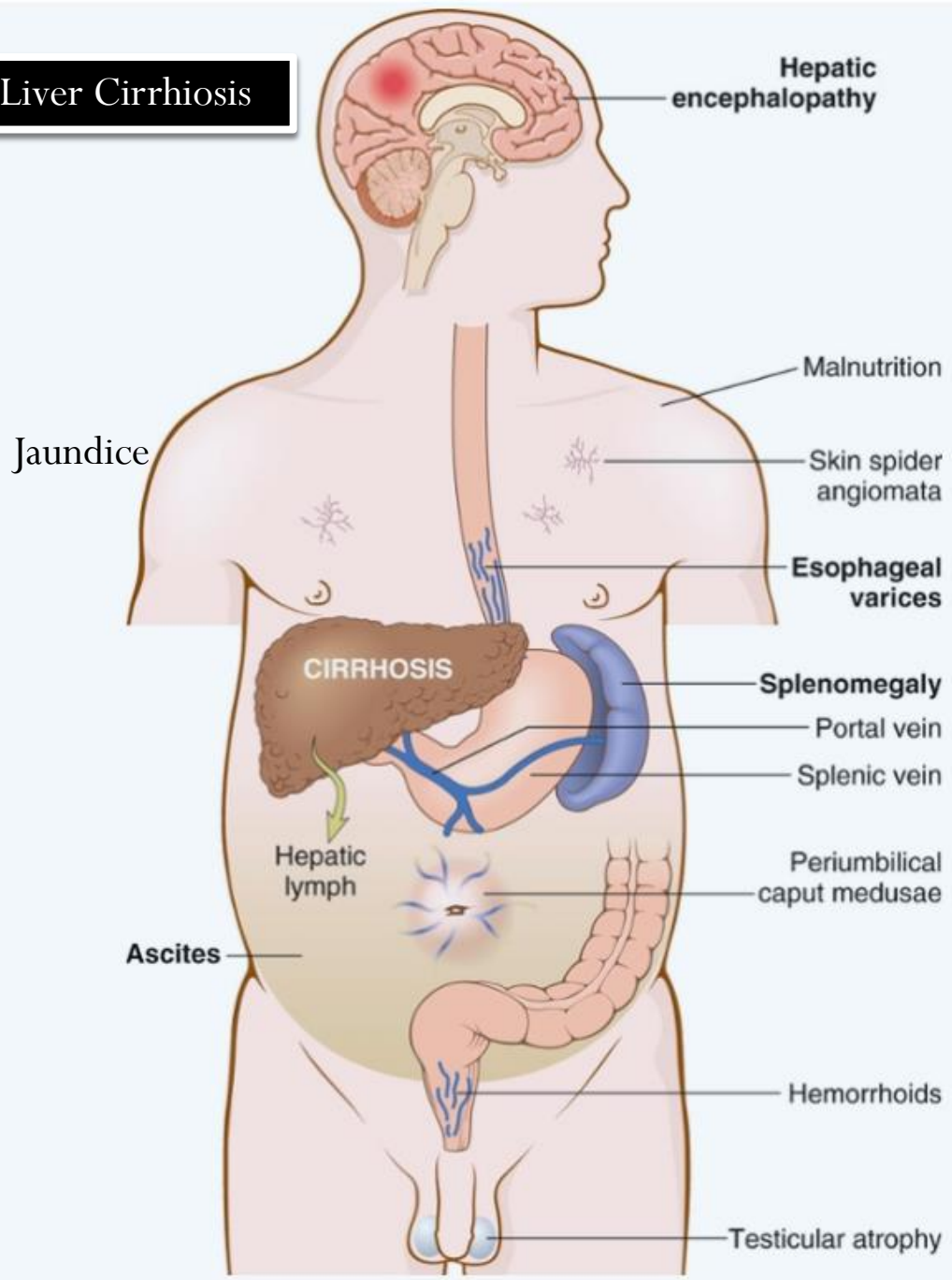
Collagen synthesis is stimulated by:

- 1) Chronic inflammation, with production of inflammatory cytokines.**
- 2) Cytokine production by activated endogenous cells (Kupffer cells, endothelial cells, hepatocytes, and bile duct epithelial cells).**
- 3) Disruption of the normal extracellular matrix.**
- 4) Direct stimulation of stellate cells by toxins**

Clinical Features

- **All forms of cirrhosis may be clinically silent.**
- **When symptomatic they lead to nonspecific clinical manifestations: anorexia, weight loss, weakness, osteoporosis, and, in advanced disease, frank debilitation.**
- **Jaundice.**
- **Incipient or overt hepatic failure may develop.**

Clinical Features of Liver Cirrhosis



Clinical Features

The ultimate mechanism of most cirrhotic deaths is

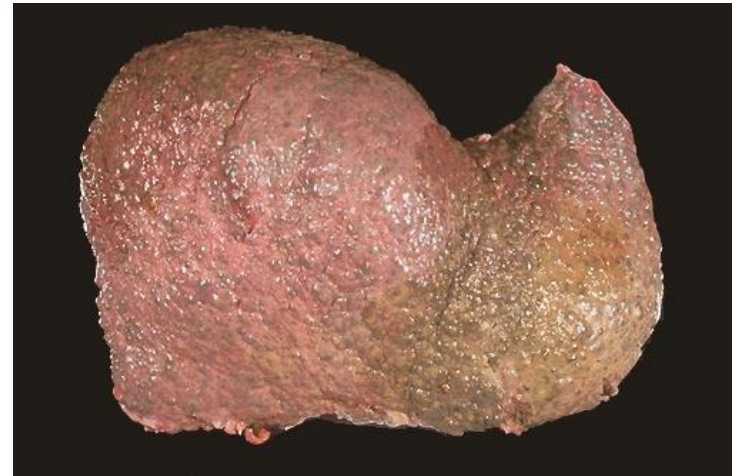
- (1) progressive liver failure**
- (2) a complication related to portal hypertension**
- (3) the development of hepatocellular carcinoma**

Gross Features

Macronodular cirrhosis

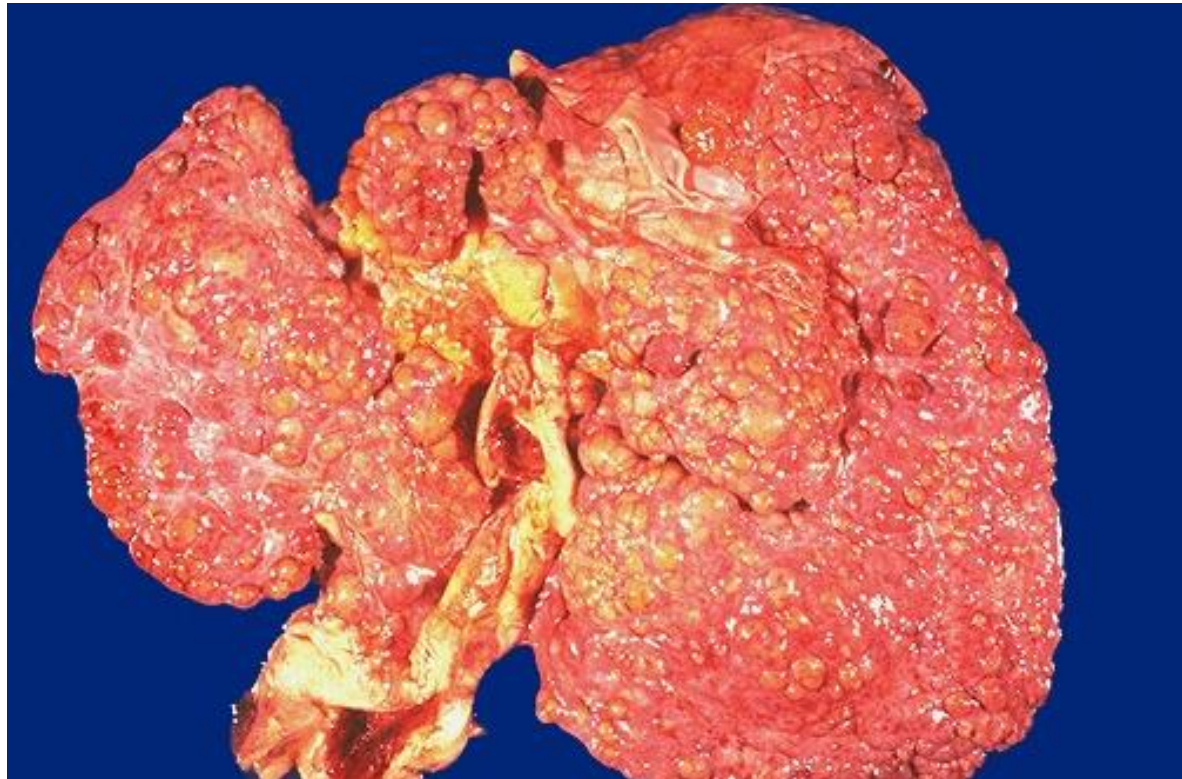


Micronodular cirrhosis



Gross Features:

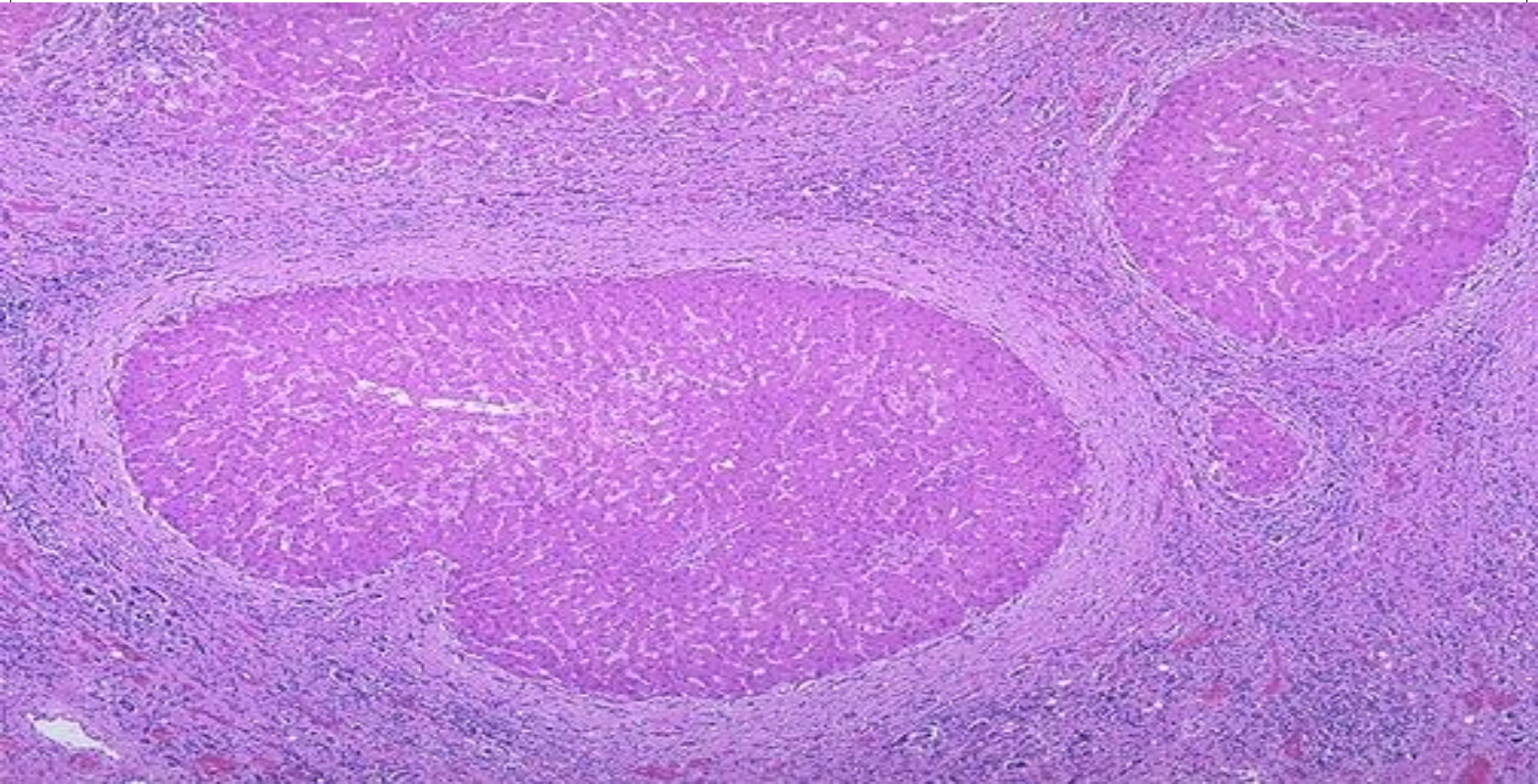
- **The nodules seen here are larger than 3 mm and, hence, this is an example of "macronodular" cirrhosis.**



Micronodular cirrhosis : The regenerative nodules are quite small, averaging less than 3 mm in size. The most common cause for this is chronic alcoholism.



Regenerative nodules of hepatocytes are surrounded by fibrous connective tissue that bridges between portal tracts. Within this collagenous tissue are scattered lymphocytes as well as a proliferation of bile ducts.



Causes of liver cirrhosis

Chronic Viral Hepatitis (hepatitis B and C virus)

Autoimmune hepatitis

Biliary Cirrhosis

Alcoholic liver disease

secondary biliary cirrhosis
primary biliary cirrhosis
primary sclerosing
cholangitis

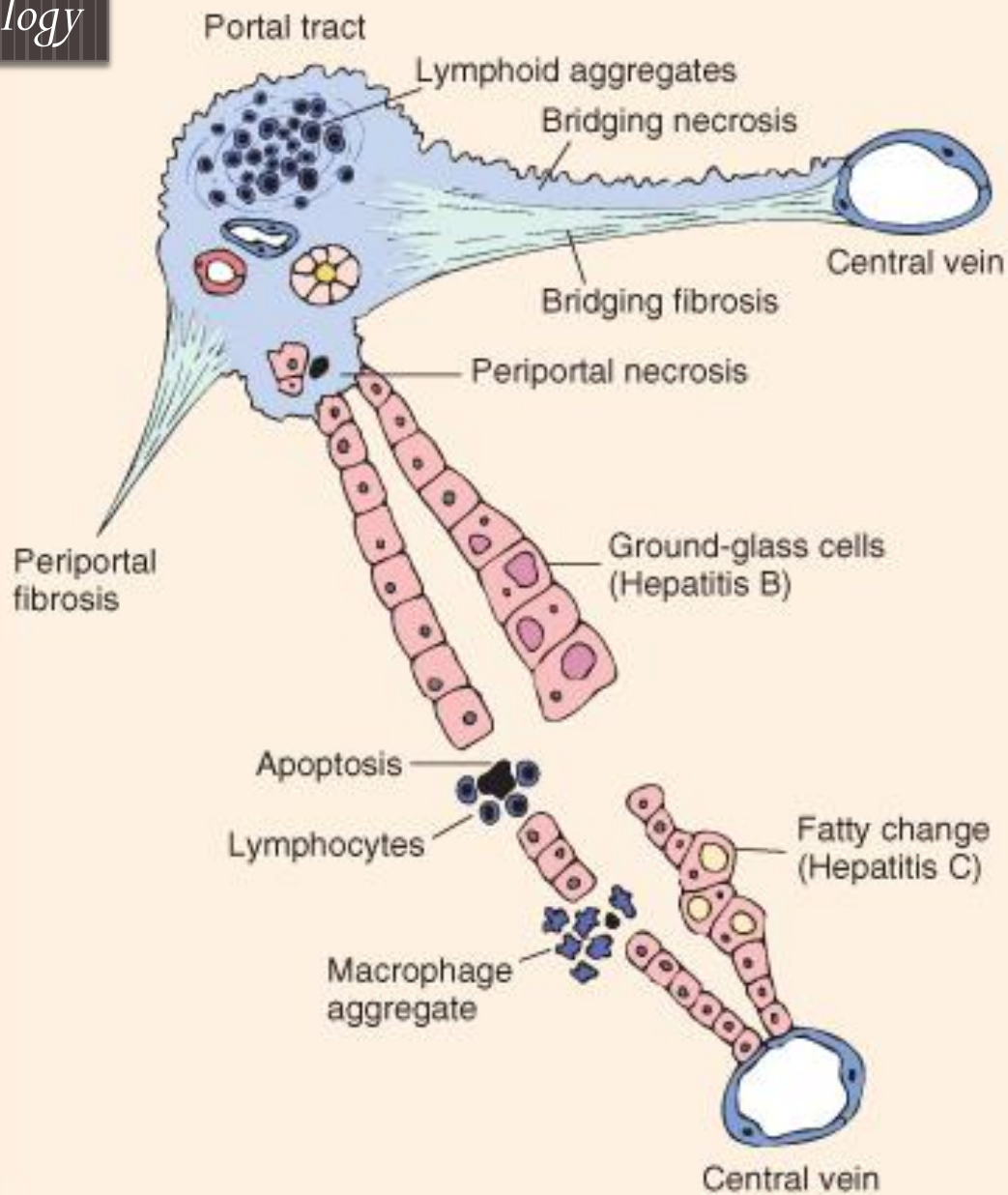
Chronic Hepatitis: morphology

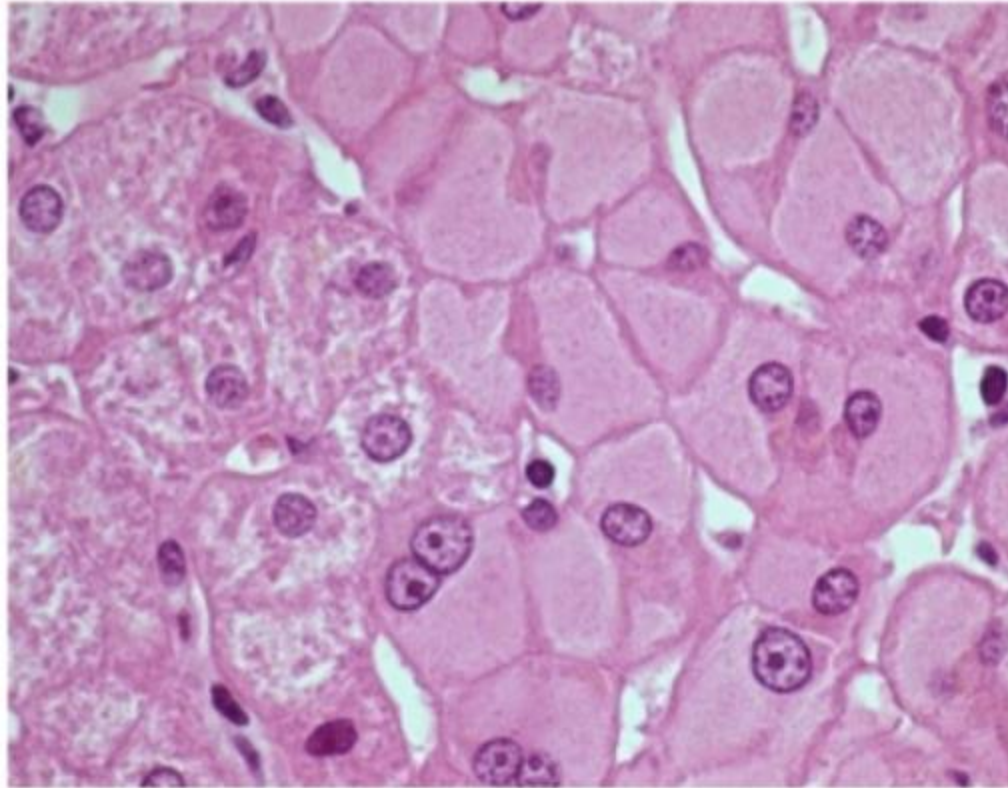
Some changes are shared with acute hepatitis.

- **Hepatocyte injury, necrosis, and regeneration**
- **Sinusoidal cell reactive changes**
- **Portal tract Inflammation:**
 - Confined to portal tracts *or*
 - Spillover into adjacent parenchyma, with necrosis of hepatocytes ("interface hepatitis") *or*
 - Bridging inflammation and necrosis
- **Fibrosis:**
 - continued loss of hepatocytes results in fibrous septa formation which ultimately leads to cirrhosis
- **HBV:** "ground-glass" hepatocytes, "sanded" nuclei
- **HCV:** bile duct damage, lymphoid aggregate formation
- ***Cirrhosis:*** *The end-stage outcome*

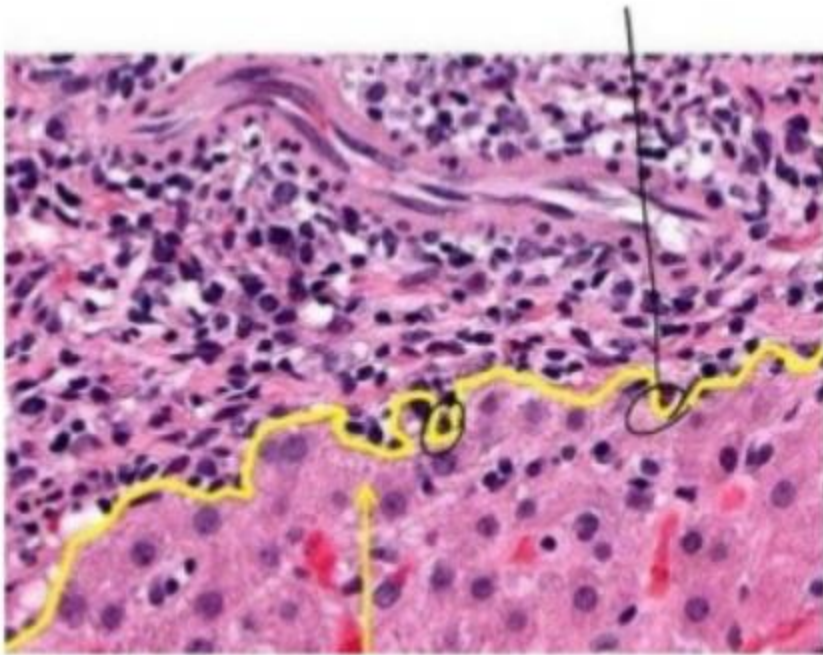
CHRONIC HEPATITIS

Chronic Hepatitis, morphology

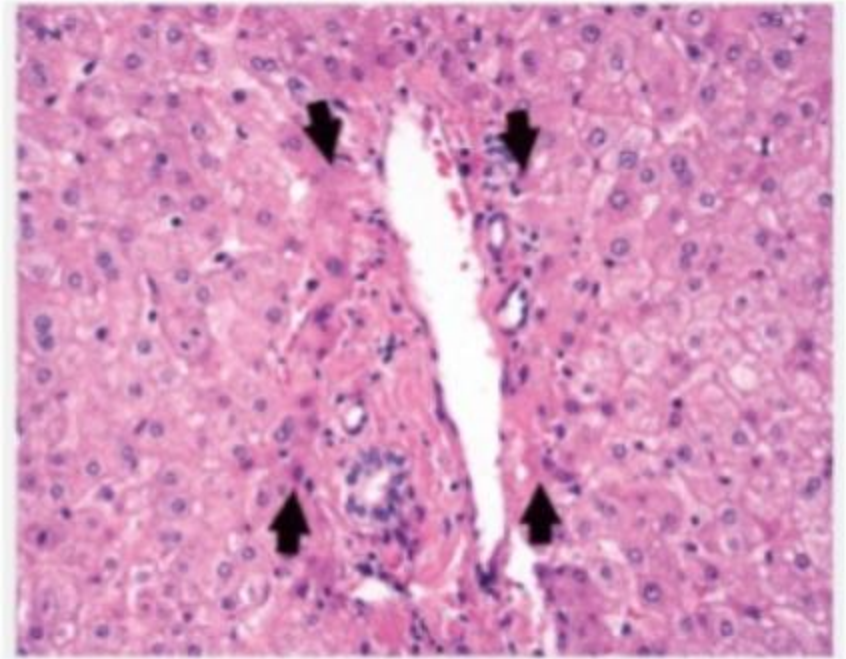




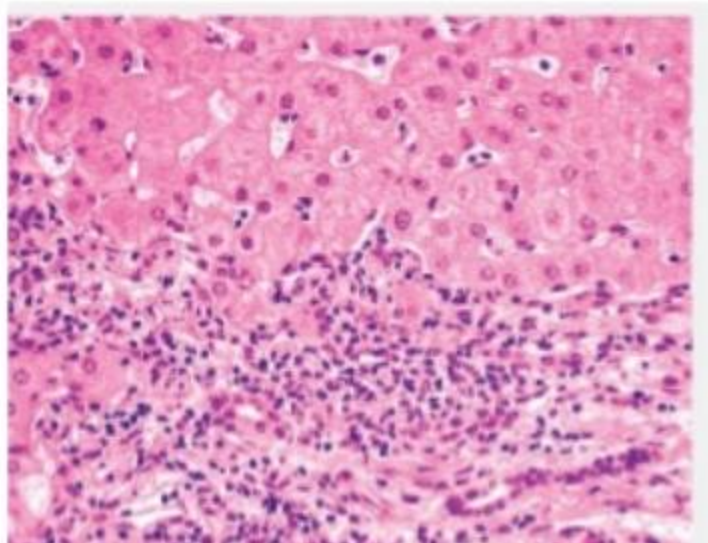
HBsAg +ve



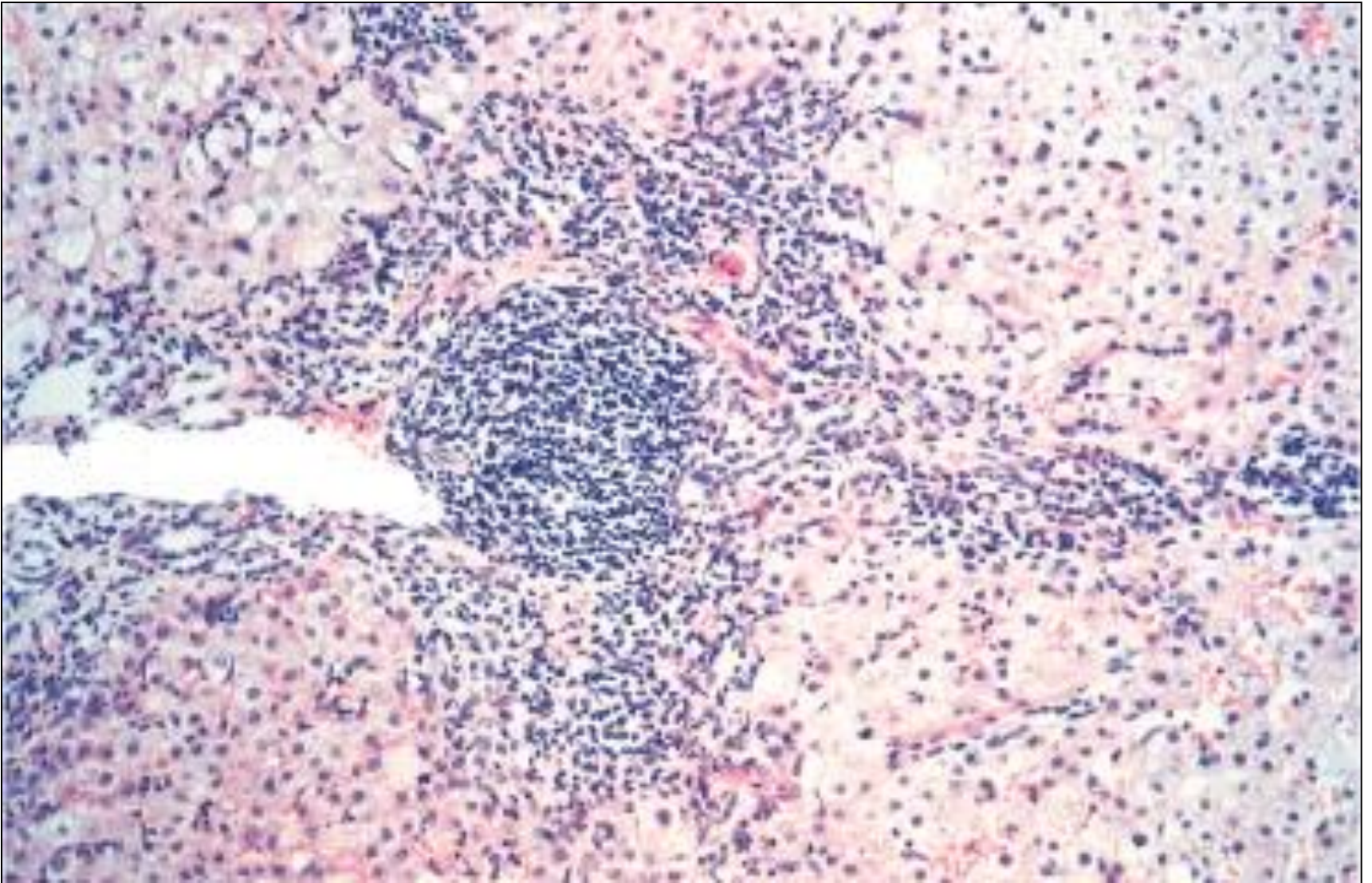
Spillover into adjacent parenchyma, with necrosis of hepatocytes
"interface hepatitis"



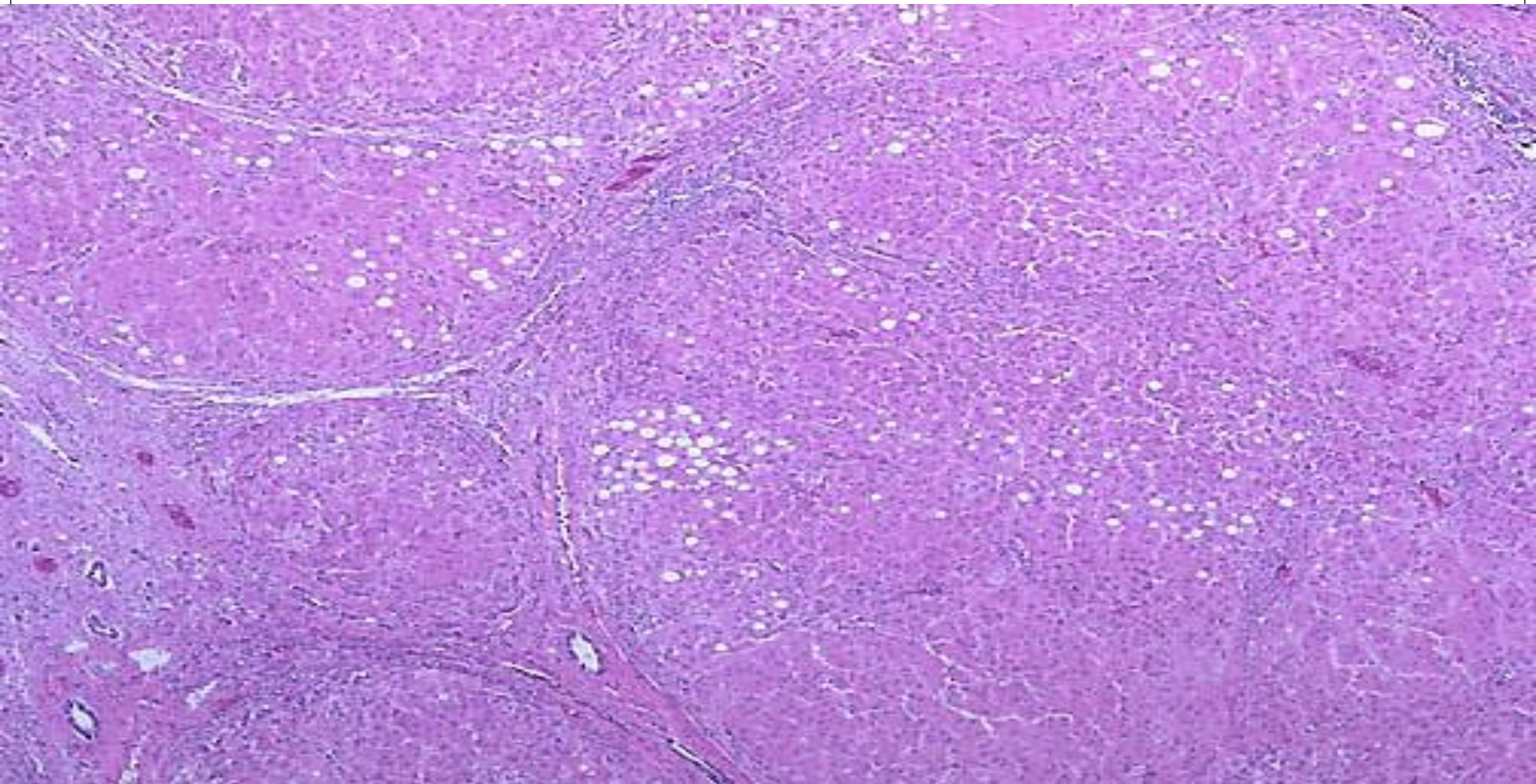
Piecemeal necrosis in Chronic hepatitis



Chronic hepatitis , *morphology*



Viral hepatitis C which is at a high stage with extensive fibrosis and progression to macronodular cirrhosis, as evidenced by the large regenerative nodule at the center right.



Autoimmune hepatitis

- **is a chronic hepatitis with histologic features like that of chronic viral hepatitis. This disease may run an indolent or severe course.**
- **Features include the following:**
 - **Female predominance, particularly in young and perimenopausal women.**
 - **Absence of viral serologic markers**
 - **Elevated serum IgG and γ -globulin levels (>1.5 times normal)**
 - **High serum titers of autoantibodies in 80% of cases, including antinuclear (ANA), antismooth muscle (SMA), anti-mitochondrial antibodies**

Autoimmune hepatitis

- In untreated severe disease, as many as 40% of patients die within 6 months of diagnosis, and cirrhosis develops in at least 40% of survivors.
- Treatment include immunosuppressive therapy, and liver transplantation.
- Associated with other autoimmune diseases eg. Rheumatoid arthritis, Sjogren's syndrome etc.

Intrahepatic Biliary Tract Disease

Three disorders of intrahepatic bile ducts:

- **Secondary biliary cirrhosis**
- **Primary biliary cirrhosis**
- **Primary sclerosing cholangitis**

Secondary biliary cirrhosis

- **Prolonged obstruction of the extrahepatic biliary tree results in profound alteration of the liver itself.**
- **The most common cause of obstruction in adults is extrahepatic cholelithiasis (gallstones), followed by malignancies of the biliary tree or head of the pancreas and strictures resulting from previous surgical procedures**
- **Obstructive conditions in children include biliary atresia, cystic fibrosis, choledochal cysts (a cystic anomaly of the extrahepatic biliary tree)**

Secondary biliary cirrhosis: morphology

- **Secondary inflammation resulting from biliary obstruction initiates periportal fibrosis, which eventually leads to hepatic scarring and nodule formation, generating secondary biliary cirrhosis.**
- **Subtotal obstruction may promote secondary bacterial infection of the biliary tree (*ascending cholangitis*), which aggravates the inflammatory injury. Enteric organisms such as coliforms and enterococci are common cause.**

Secondary biliary cirrhosis

Etiology	Extrahepatic bile duct obstruction: biliary atresia, gallstones, stricture, carcinoma of pancreatic head
Sex predilection Symptoms and signs	None. Pruritus, jaundice, malaise, dark urine, light stools, hepatosplenomegaly
Laboratory findings	Conjugated hyperbilirubinemia, increased serum alkaline phosphatase, bile acids, cholesterol
Important pathologic findings before cirrhosis develops	Prominent bile stasis in bile ducts, bile ductular proliferation with surrounding neutrophils, portal tract edema

Primary biliary cirrhosis

- Primary biliary cirrhosis is a chronic, progressive, and often fatal cholestatic liver disease, characterized by the destruction of intrahepatic bile ducts, portal inflammation and scarring, and the eventual development of cirrhosis and liver failure.
- *The primary feature of this disease is a nonsuppurative, inflammatory destruction of medium-sized intrahepatic bile ducts.*
- Cirrhosis develops only after many years.

Primary biliary cirrhosis

- middle-aged women,
- female:male predominance (6:1).
- **Pathogenesis:** autoimmune etiology, 90% of patients have circulating "antimitochondrial antibodies."

Primary biliary cirrhosis

Clinical features:

- pruritus, jaundice, hepatomegaly. Xanthomas and xanthelasmas arise owing to cholesterol retention.
- Over a period of time patients develop portal hypertension and hepatic encephalopathy.
- Serum alkaline phosphatase and cholesterol are elevated; hyperbilirubinemia is a late development.
- 90% of patients have circulating "antimitochondrial antibodies."

Primary biliary cirrhosis

Morphology:

- **During the precirrhotic stage, portal tracts and bile ducts are infiltrated by lymphocytes and may exhibit noncaseating granulomatous inflammation. There is bile duct destruction.**
- **With time, there is bile ductular proliferation, inflammation, and necrosis of the adjacent periportal hepatic parenchyma.**
- **Over years to decades, relentless portal tract scarring and bridging fibrosis lead to cirrhosis.**

Primary biliary cirrhosis

- **In most cases, the end-stage picture is indistinguishable from secondary biliary cirrhosis or the cirrhosis that follows chronic hepatitis from other causes**

Primary biliary cirrhosis

Etiology	Possibly autoimmune
Sex predilection Symptoms and signs	Female to male: 6:1 Same as secondary biliary cirrhosis
Laboratory findings	Same as secondary biliary cirrhosis, plus elevated serum autoantibodies (especially antimitochondrial antibody-AMA)
Important pathologic findings before cirrhosis develops	Dense lymphocytic infiltrate in portal tracts with granulomatous destruction of bile ducts

Primary sclerosing cholangitis

- *Primary sclerosing cholangitis is characterized by inflammation and obliterative fibrosis of intrahepatic and extrahepatic bile ducts, with dilation of preserved segments.*
- Characteristic "beading" of a barium column in radiographs of the intrahepatic and extrahepatic biliary tree is attributable to the irregular strictures and dilations of affected bile ducts.
- *It is commonly seen in association with inflammatory bowel disease , particularly chronic ulcerative colitis*
- Males predominate 2:1
- **Pathogenesis:** unknown.

Primary sclerosing cholangitis: Morphology

- **Primary sclerosing cholangitis is a fibrosing cholangitis of bile ducts, with a lymphocytic infiltrate, progressive atrophy of the bile duct epithelium, and obliteration of the lumen.**
- The concentric periductal fibrosis around affected ducts ("onion-skin fibrosis") is followed by their disappearance, leaving behind a solid, cordlike fibrous scar.
- As the disease progresses, the liver becomes cirrhotic like that seen with primary and secondary biliary cirrhosis

Primary sclerosing cholangitis

Etiology

Unknown, possibly autoimmune; 50-70% associated with inflammatory bowel disease

Sex predilection Symptoms and signs

Female to male: 1:2 Same as secondary biliary cirrhosis; insidious onset

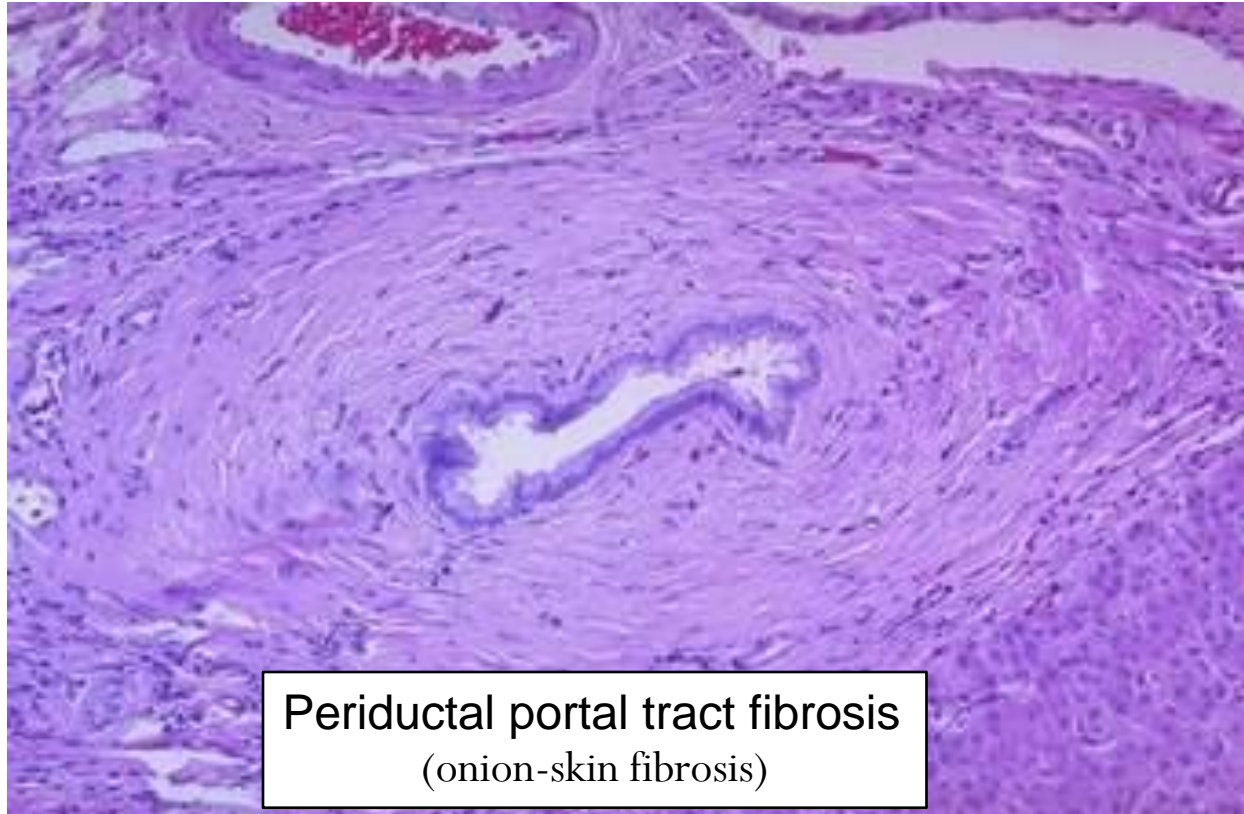
Laboratory findings

Same as secondary biliary cirrhosis, plus elevated serum IgM, hypergammaglobulinemia

Important pathologic findings before cirrhosis develops

Periductal portal tract fibrosis, segmental stenosis of extrahepatic and intrahepatic bile ducts

Primary sclerosing cholangitis

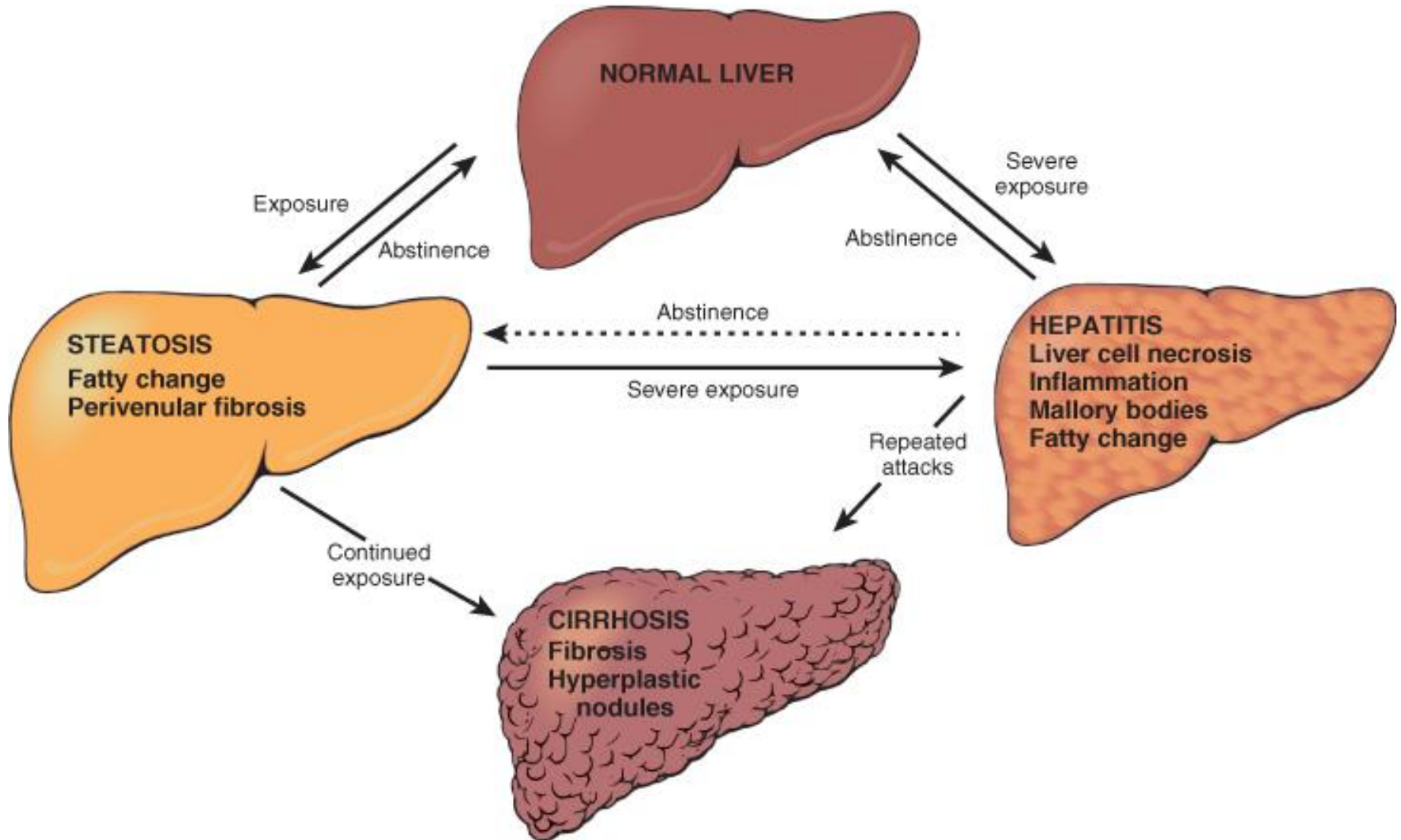


Alcoholic liver disease

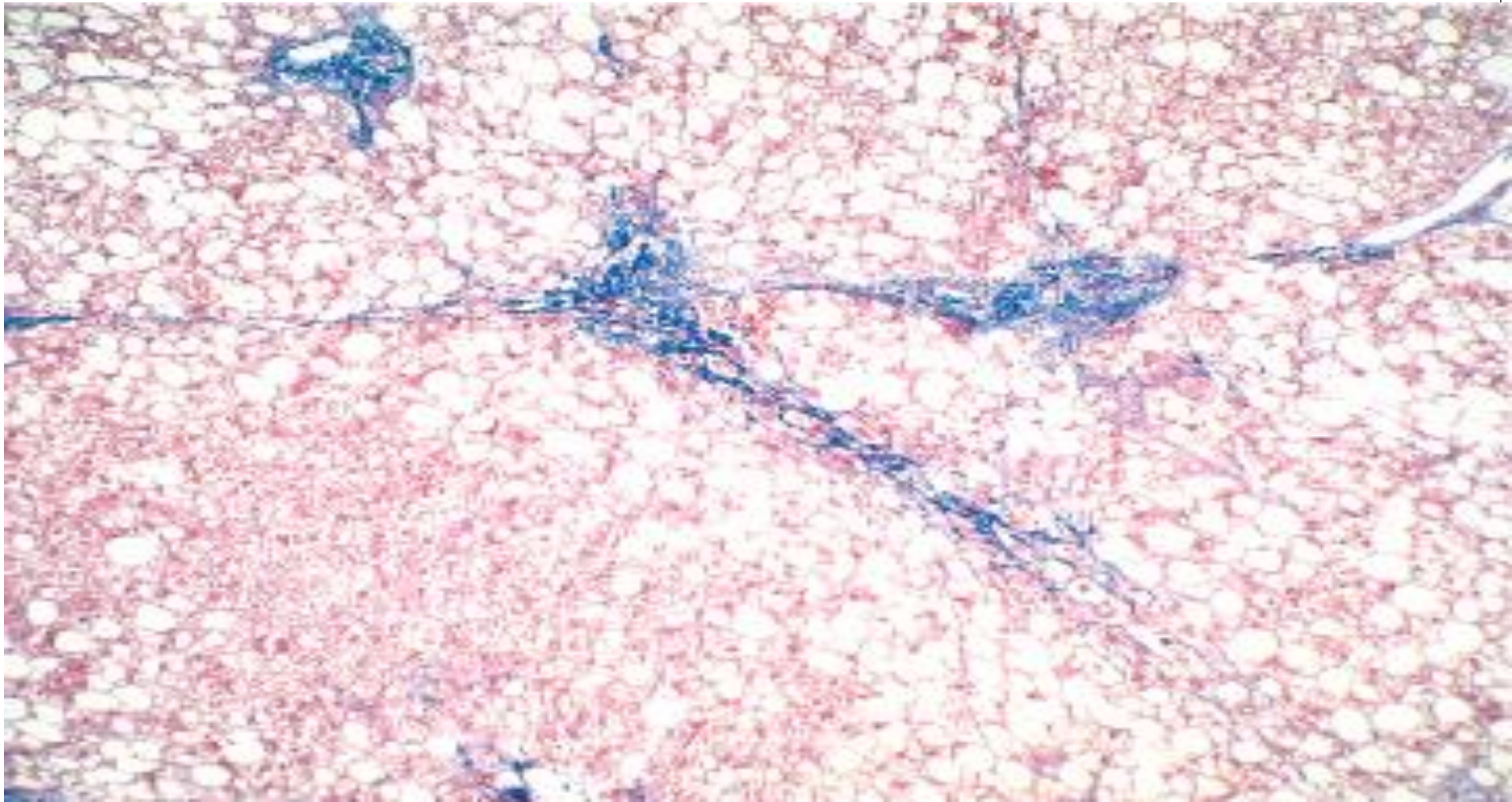
Three features:

1. Steatosis (fatty change)
2. Hepatitis (steatohepatitis)
3. Fibrosis

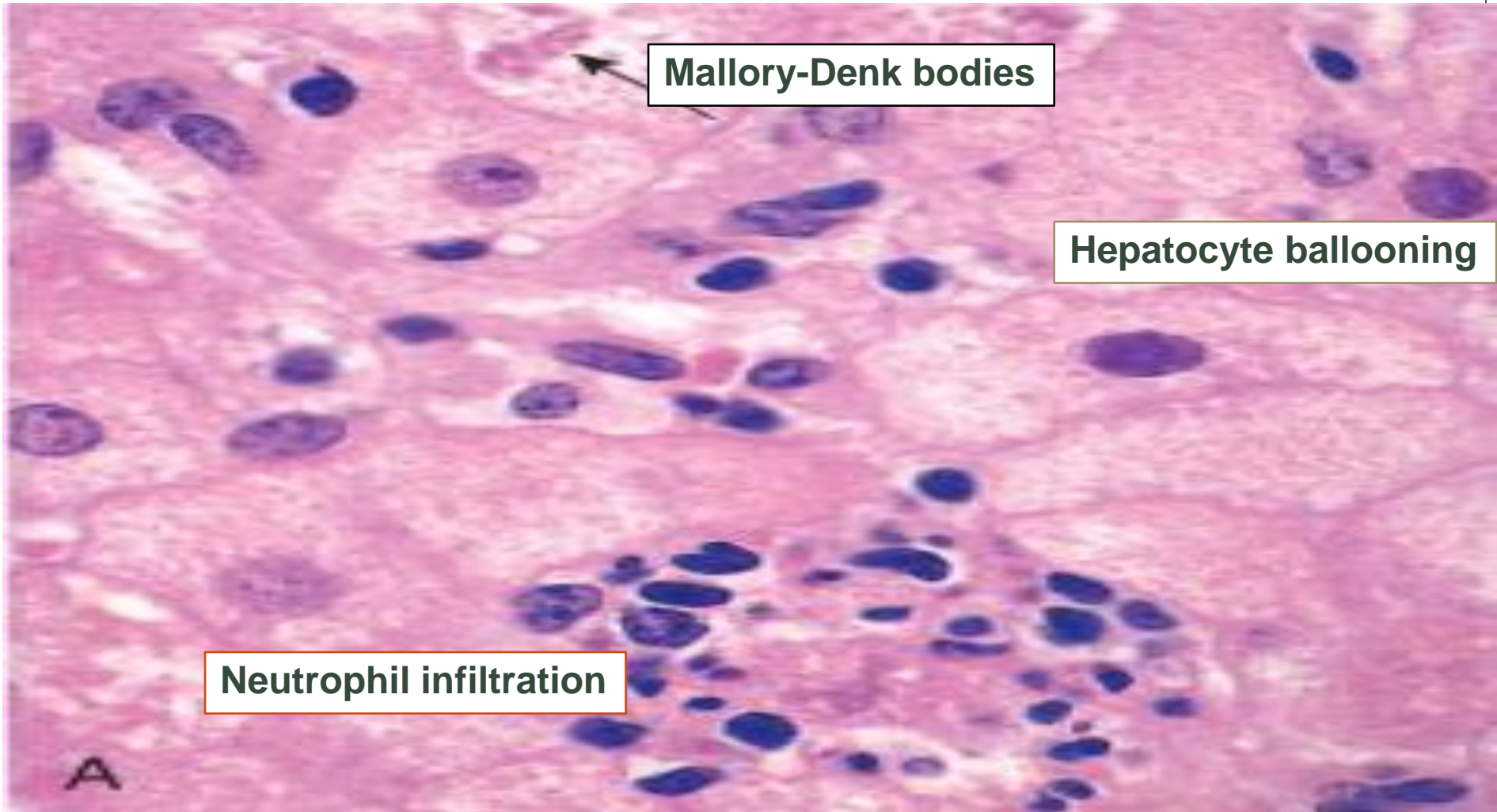
Alcoholic liver disease



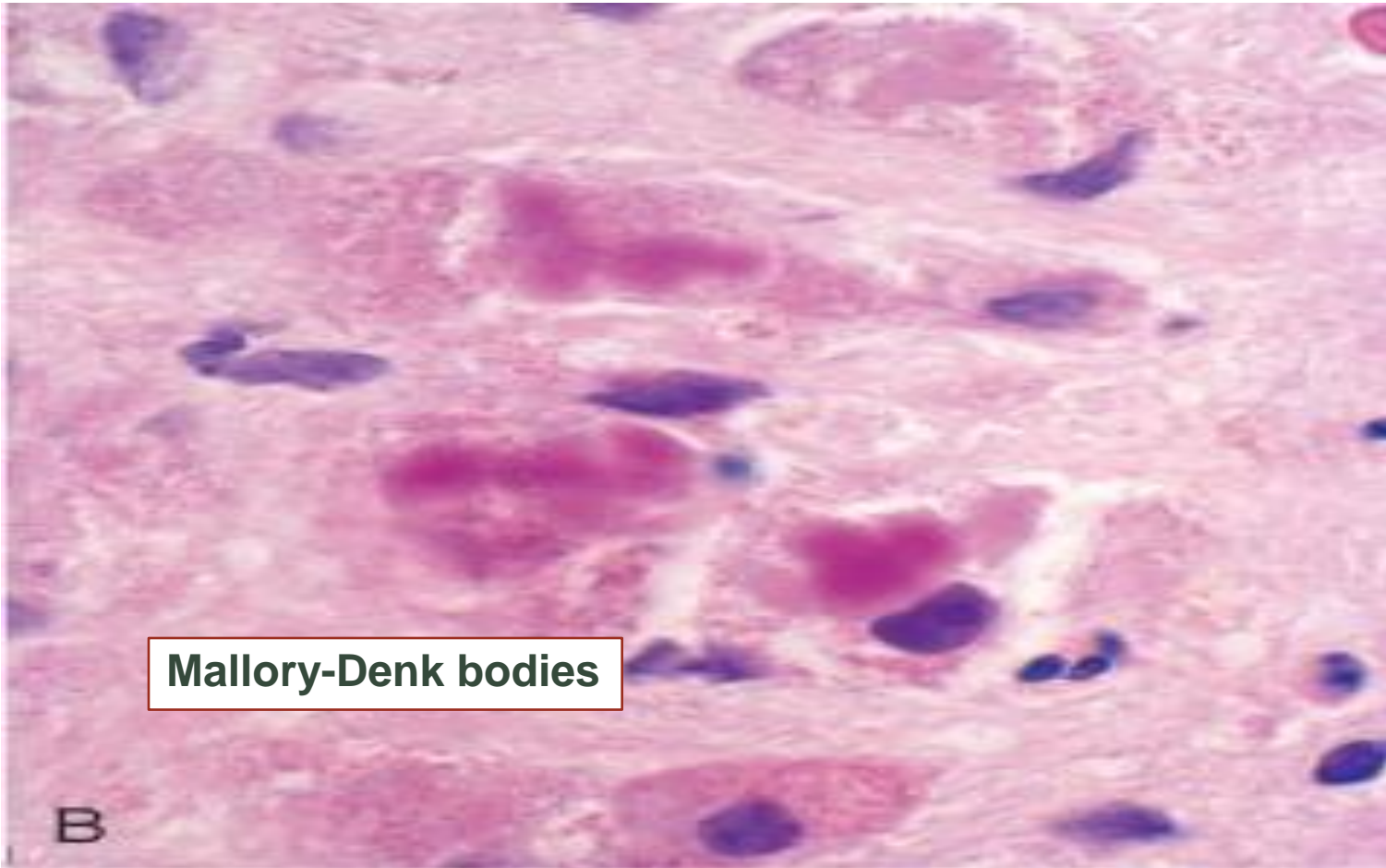
Alcoholic liver disease



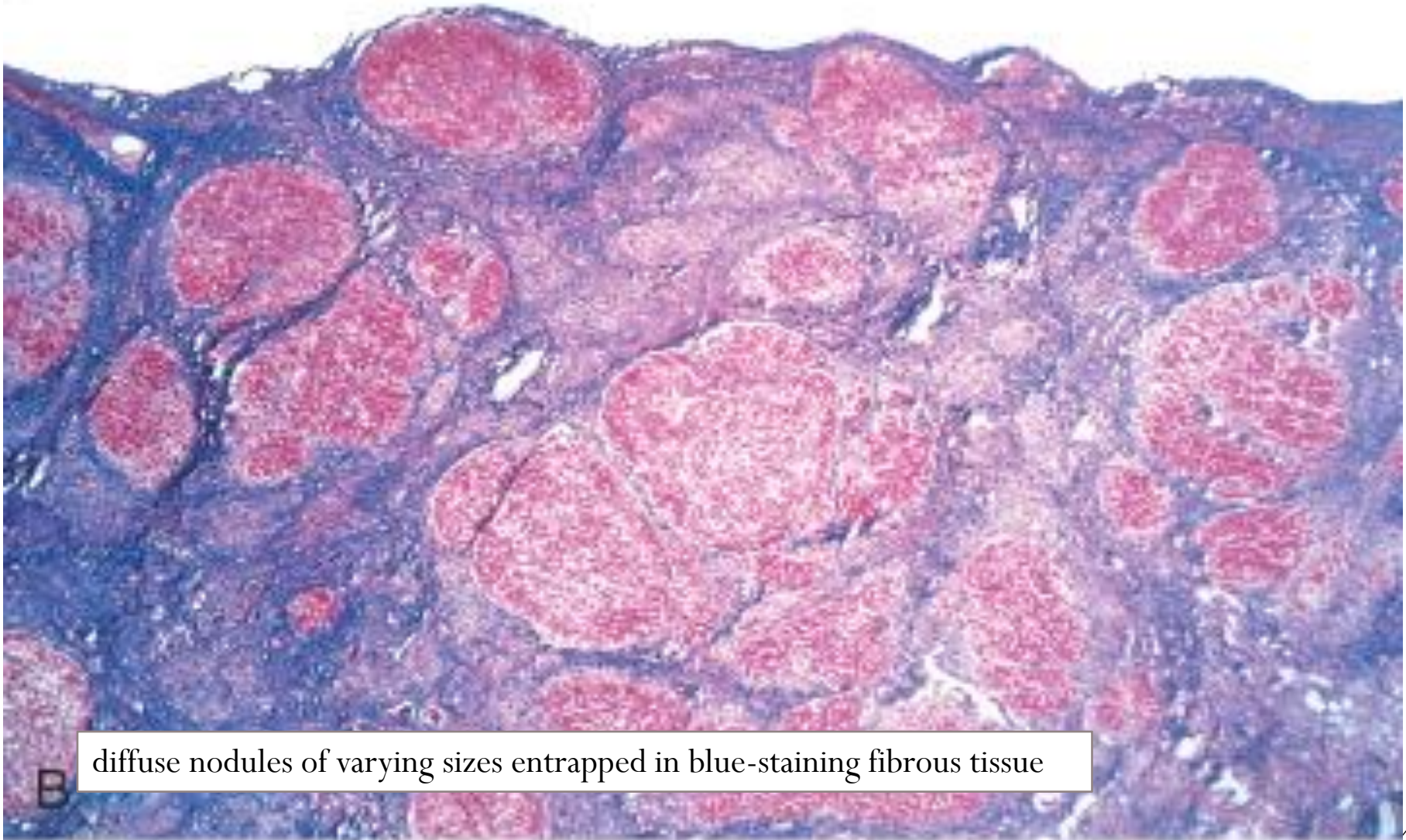
Alcoholic liver disease



Alcoholic liver disease



Alcoholic liver disease Cirrhosis



B diffuse nodules of varying sizes entrapped in blue-staining fibrous tissue

Alcoholic liver disease

- The causes of death are:
 - Hepatic failure
 - Massive gastrointestinal hemorrhage
 - Intercurrent infection (to which affected individuals are predisposed)
 - Hepatorenal syndrome
 - Hepatocellular carcinoma (3%–6% of cases)