



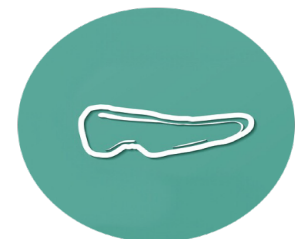
MEDICINE  
KING SAUD UNIVERSITY



Radiology  
Team 436

# Endocrine Block

Questions file



**LEADERS:**

Mohammed Alduayj  
Hanin Bashaikh

**Done by:**

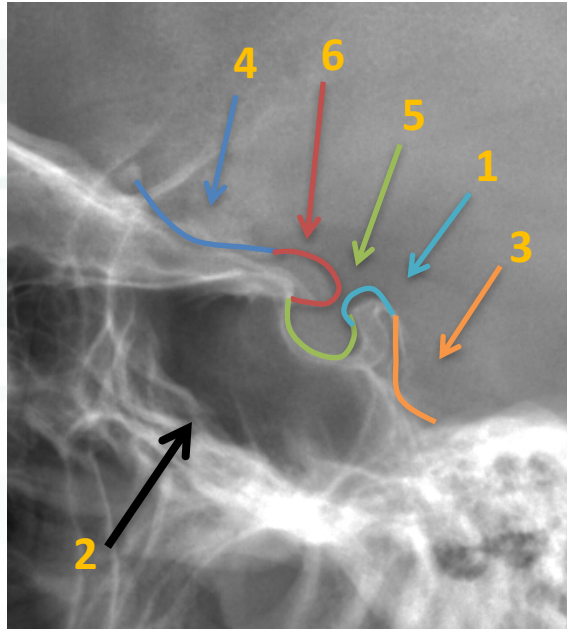
Leena Alwakeel

**DESIGN:**

Maram Alduayj

## Test your self !

Q: identify each part from the picture ?



- 1- .....
- 2- .....
- 3- .....
- 4- .....
- 5- .....
- 6- .....

### Answers:

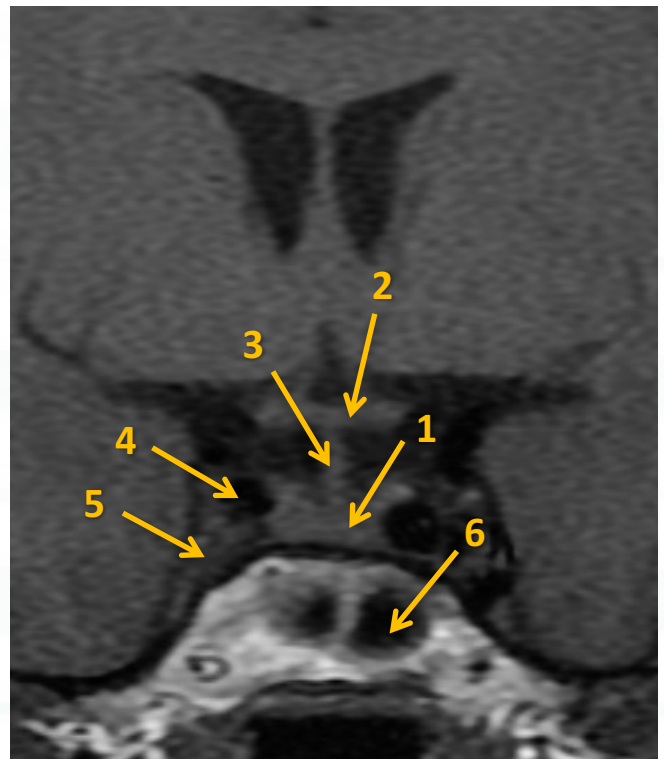
- 1- Posterior clinoid process.
- 2- Sphenoid sinus.
- 3- Dorsum sella.
- 4- Optic sulcus.
- 5- Floor of sella turcica (Pituitary fossa).
- 6- Anterior clinoid process.

# Q: identify each part from the pictures ?

- 1- .....
- 2- .....
- 3- .....
- 4- .....
- 5-.....
- 6- .....



- 1- .....
- 2- .....
- 3- .....
- 4- .....
- 5-.....
- 6- .....



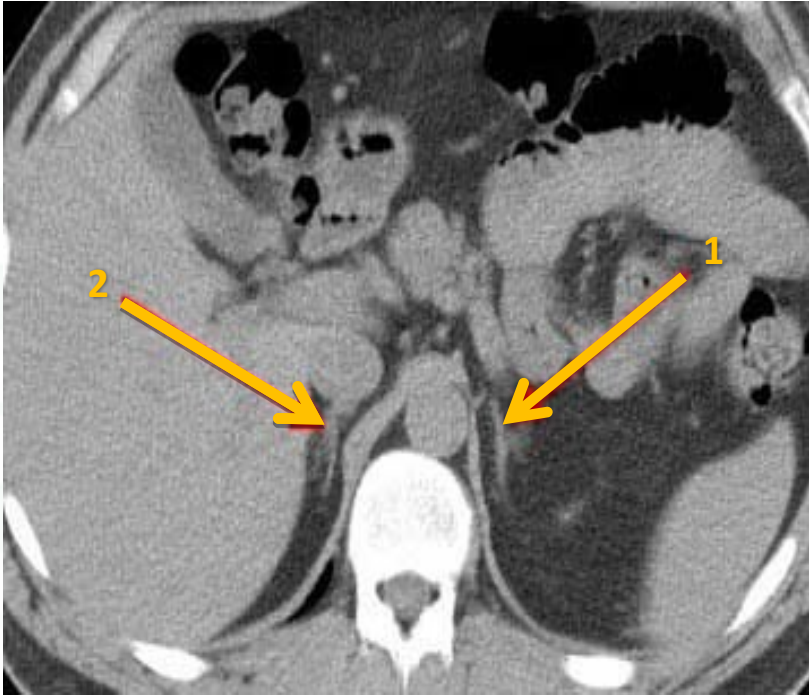
## First picture answers:

- 1- Pituitary gland.
- 2- Sphenoid sinus.
- 3- Optic chiasm.
- 4- Hypothalamus.
- 5- Pituitary stalk.
- 6- Clivus.

## Second picture answers:

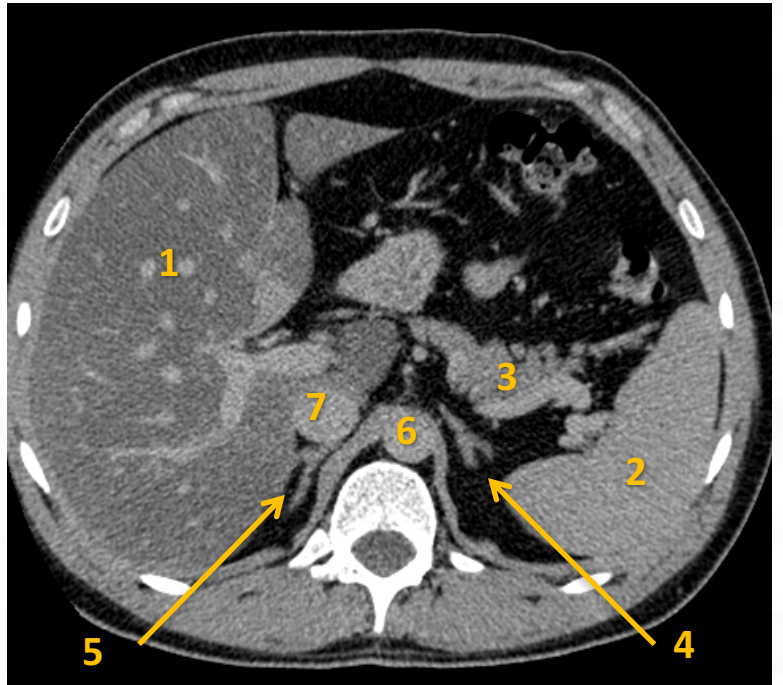
- 1- Pituitary gland.
- 2- Optic Chiasm.
- 3- Pituitary stalk.
- 4- Carotid artery.
- 5- Cavernous sinus.
- 6- Sphenoid sinus.

**Q: identify each part from the pictures ?**



- 1- .....
- 2- .....

- 1- .....
- 2- .....
- 3- .....
- 4- .....
- 5- .....
- 6- .....
- 7- .....



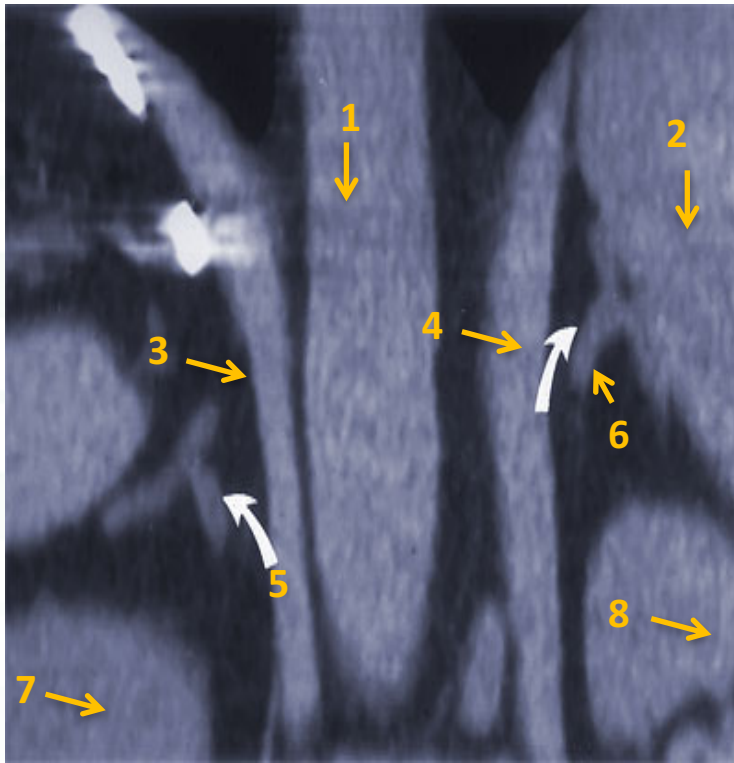
**First picture answers:**

- 1- Left adrenal gland.
- 2- Right adrenal gland.

**Second picture answers:**

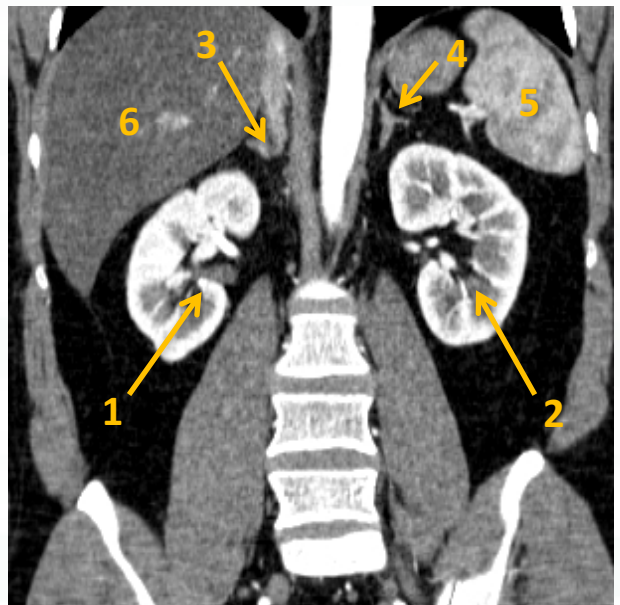
- 1- Liver.
- 2- Spleen.
- 3- Pancreas.
- 4- Left adrenal gland.
- 5- Right adrenal gland.
- 6- Aorta.
- 7- IVC.

**Q: identify each part from the picture ?**



- 1- .....
- 2- .....
- 3- .....
- 4- .....
- 5-.....
- 6- .....
- 7-.....
- 8- .....

- 1- .....
- 2- .....
- 3- .....
- 4- .....
- 5-.....
- 6- .....



**Second picture answers:**

- 1- Right kidney.
- 2- Left kidney.
- 3- Right adrenal gland.
- 4- Left adrenal.
- 5- Spleen.
- 6- Liver.

**First picture answers:**

- 1-Aorta.
- 2-Spleen.
- 3-Right Diaphragmatic crus.
- 4-Left Diaphragmatic crus.
- 5-Right adrenal gland.
- 6-Left adrenal gland.
- 7-Right kidney.
- 8-Left kidney.