

Drugs used in Depression- Old groups

By

Dr. Ishfaq Bukhari

and Prof. Yieldez Bassiouni

Depression

"**Depression**" is a very common psychiatric disorder that is related to the "mood" (affective disorder).

- Changes in mood are associated with **depression and/or mania**.
- **Disorders of mood** rather than disturbance in thought or cognition.

- **Incidence:** Depression is a chronic and recurrent illness that can affect at least 20% of the population at some period in their lifetime.
- **Cost:** 15-35 billions \$ / year in USA only.

Classification of Depression

A) According to severity of symptoms:

1. **Mild depression**-----self-limiting
2. **Moderate depression** -----difficulties at home and work
3. **Severe depression** -----serious, associated with **suicidal thoughts**

B) According to type

1- Unipolar depression (major depression):

- mood swings are always in the same direction (depression)

2- Bipolar depression (manic-depressive):

- in which **depression alternates with mania**
- It is mainly hereditary and appears in early adult life

3- Other forms of depression:

- Psychotic depression
- Postpartum depression
- Atypical depression

Symptoms of Depression

Loss of energy and interest

- Diminished ability to enjoy oneself.
- Decreased -- or increased -- sleeping or appetite.
- Difficulty in concentrating; indecisiveness; slowed or fuzzy thinking.
- Exaggerated feelings of sadness, hopelessness, or anxiety.

Feelings of worthlessness.

- Recurring thoughts about death and **suicide**.
- If most of these symptoms last for two weeks or more, the person probably has Depressive illness.



Symptoms of Mania

- causes mood swings creating periods with the following symptoms:
 - A high energy level with **decreased need for sleep.**
 - Unwarranted or **exaggerated belief** in one's own ability.
 - Extreme irritability.
 - Rapid, **unpredictable emotional changes.**

Biochemical Theory of Affective Disorders.



Rx Drugs that decrease NE

Drugs that increase NE

What is the evidence to support this theory ?

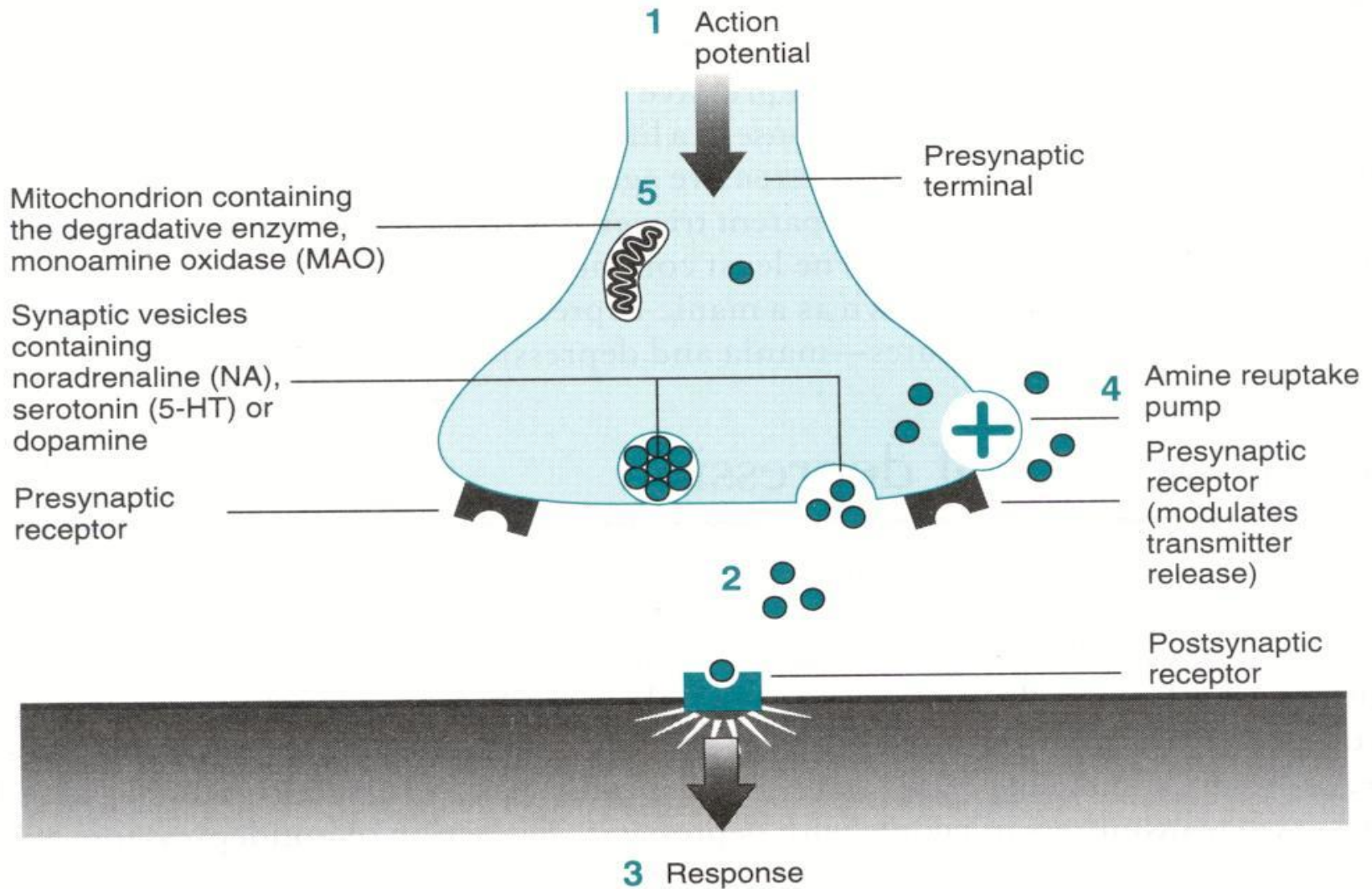
Amphetamine causes mania while reserpine and methyldopa produce depression (these drugs deplete NE and dopamine storage).

- **5-HT deficiency** may cause the sleep problems, irritability and anxiety associated with depression
- **Decreased level of NE**, which regulates mood, alertness, arousal, appetite, reward & drives, may contribute to the fatigue and depressed mood of the illness.
- However, **dopamine** is important for pleasure, Sexual function & psychomotor activity.

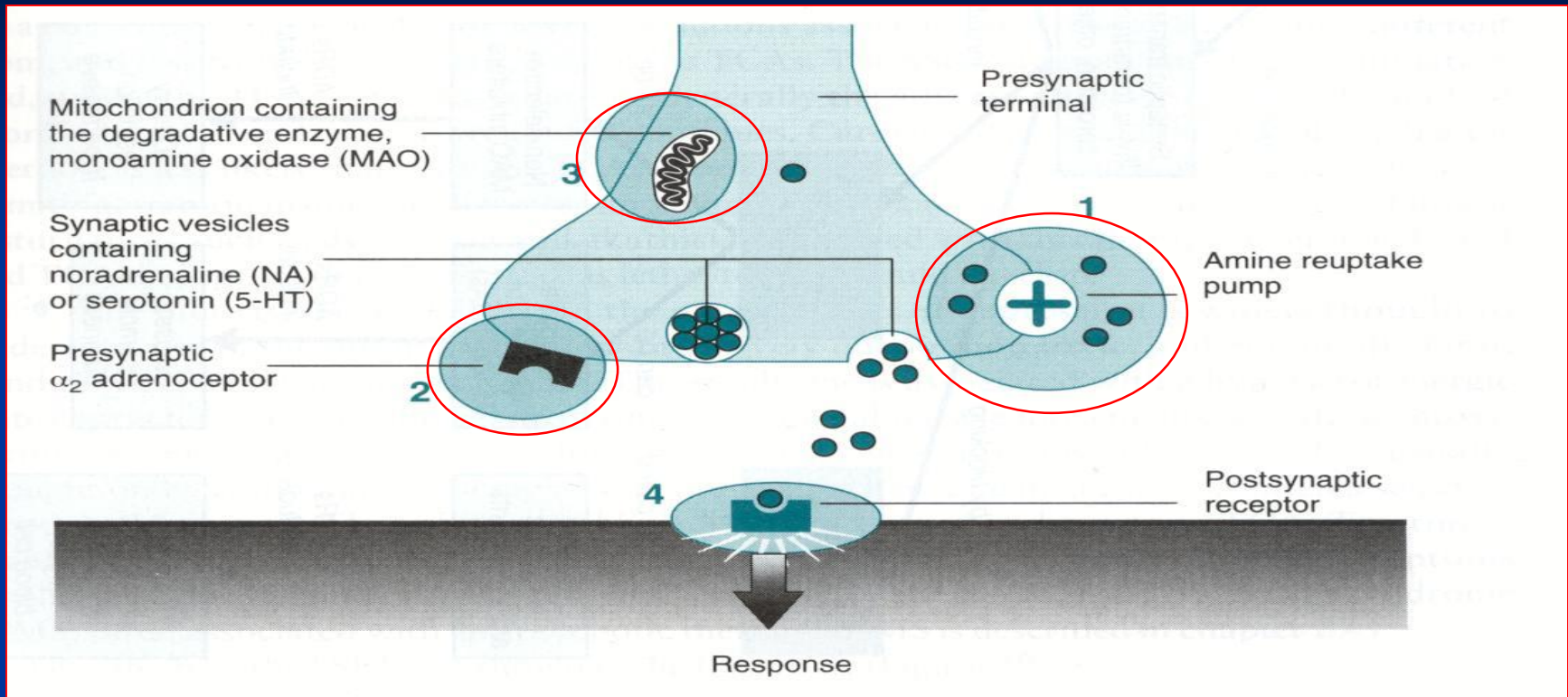
What are the features of drugs that should be used for Rx of Depression?

- Simply to increase the levels of these amines.

Monoamine nerves: Neurotransmission



Sites of Action for Antidepressants



- 1- Monoamine (NE or/ and 5-HT) re-uptake pump inhibitors
- 2- Blockade of pre-synaptic α_2 receptors
- 3- Inhibition of MAO enzyme

Classification of antidepressants based on site of action

- A) Drugs that block the reuptake of NE and 5-HT (e.g.: Most tricyclics) (old antidepressants)
- B) Drugs that Inhibit MonoAminoOxidase (MAOIs, Phenelzine, Tranylcypaine, Moclobemide) (old Antidepressants)
- C) Drugs that selectively block reuptake of 5-HT (SSRIs) (Fluoxetine; Paroxetine; Sertraline; Citalopram)
- C) Drugs that Block Presynaptic α_2 -adrenoceptors (e.g.: Mirtazapine, Mianserin).

Antidepressants Available in the Market (Worldwide)

1) Tricyclics (TCAs) and Tetracyclics

Imipramine

Amoxapine

Amitriptyline

Maprotiline

Nortriptyline

Desipramine

Clomipramine

2) Monoamine Oxidase Inhibitors (MAOIs)

Tranylcypamine

Phenelzine

Moclobemide

3) Selective Serotonin Reuptake Inhibitors (SSRIs)

Fluoxetine

Sertraline

Fluvoxamine

Paroxetine

Citalopram

Escitalopram

Classification of Antidepressants

4) Serotonin and Norepinephrine Reuptake Inhibitor (SNRI)

Venlafaxine

Duloxetine

5) Serotonin-2 Antagonist and Reuptake Inhibitors (SARIs)

Nefazodone

Trazodone

6) Norepinephrine and Dopamine Reuptake Inhibitor (NDRI)

Bupropion

7) Noradrenergic and Specific Serotonergic Antidepressant (NaSSAs)

Mirtazapine

8) Noradrenaline Reuptake Inhibitor (NRI)

Reboxetine

Slow onset of action

- ❑ Antidepressants do not act immediately (**show clinical effects after 3 weeks**) indicating that secondary adaptive changes must occur before the benefit is gained
- ❑ The most consistent adaptive change seen with antidepressant drugs is the **downregulation of beta-, alpha-2 and 5-HT₂ receptors**. **These receptors mediate negative feedback on monoamine release in the brain.**
- ❑ Desensitization (down-regulation) of β - adrenoceptors (decrease c-AMP) is very important and is related to clinical response.

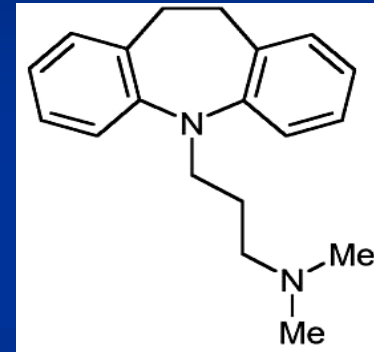
Old antidepressants

TRICYCLIC ANTIDEPRESSANTS (TCAs)

TCAs are the oldest class of antidepressant drugs

They have characteristic three-ring nucleus

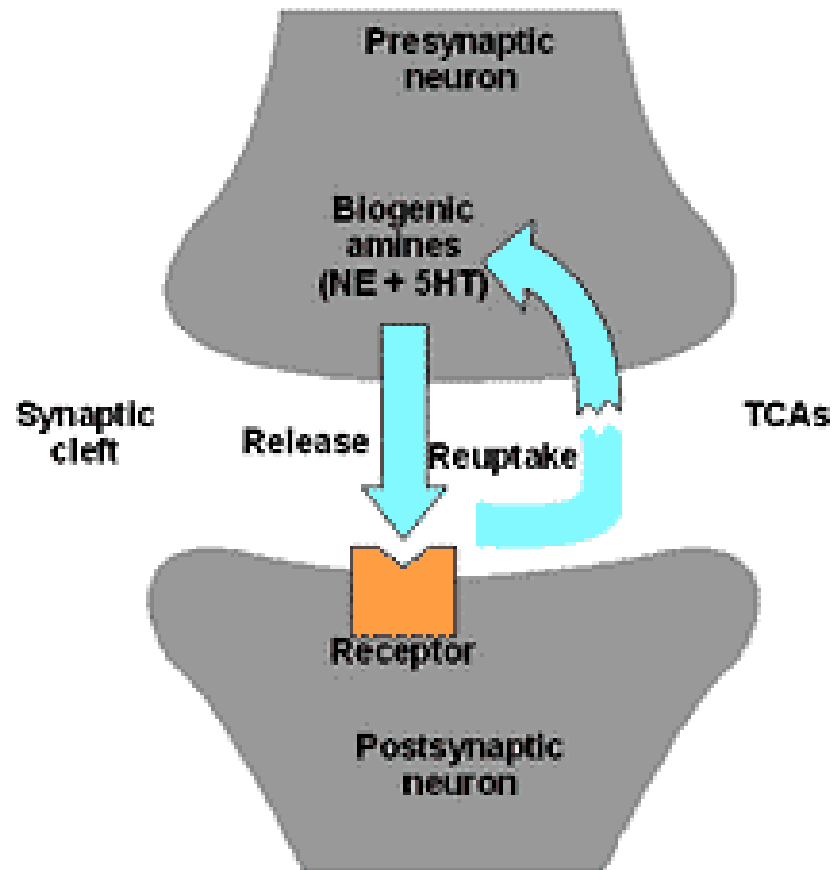
- Imipramine Desipramine
- Clomipramine Amitriptyline
- Nortriptyline



TETRACYCLIC ANTIDEPRESSANTS

- Maprotiline
- Amoxapine

Mechanism of action of tricyclic antidepressants



MECHANISM OF ACTION of TCAs:

- All tricyclics block reuptake pumps for both 5HT and NE in nerve terminals by competing for binding site of the transport protein
 - So ↑ conc. of NE & serotonin in the synaptic cleft & at the receptor site
- Some have more potency for inhibition of 5HT uptake pump; clomipramine, imipramine, amitriptyline
- Others have more potency for inhibition of NE uptake pump: nortriptyline, desipramine

PHARMACOLOGICAL ACTIONS

1- Elevate mood

2- Improve mental alertness

3- Increase physical activity



The antidepressant effect may develop after several weeks of continued treatment (2 - 3 weeks)

4- In non-depressed patients → They cause sedation, confusion & motor incoordination

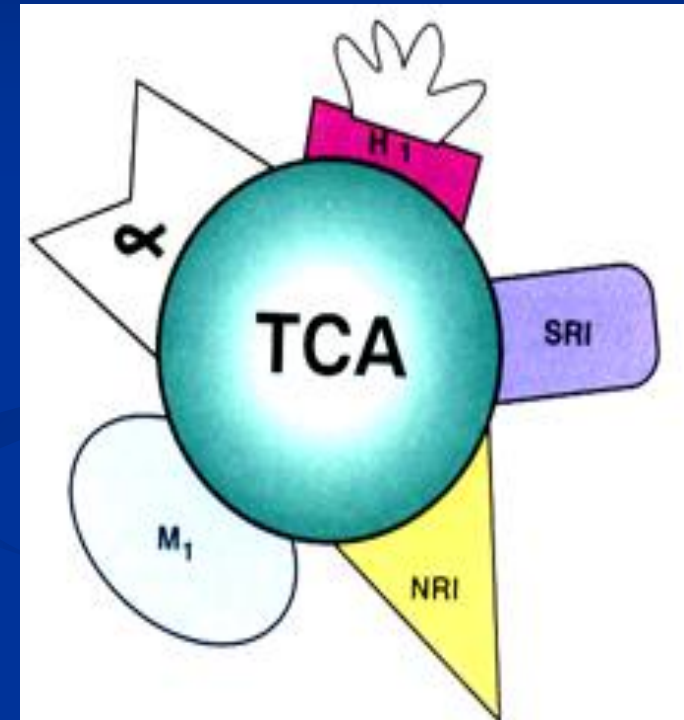
PHARMACOKINETICS of TCAs

- Peak levels: 2-6 hours post ingestion
- ⑩ TCAs are "**lipophilic**" in nature, therefore they are well absorbed from the GIT and readily cross the blood brain barrier to penetrate the CNS.
- Elimination: hepatic oxidation
- ⑩ TCAs are metabolized in the liver by demethylation (**Imipramine** to **Desipramine**, **Amitriptyline** to **Nortriptyline**) and by hydroxylation into metabolites that **retain the biological activity of the parent compounds.**

Side Effects of TCAs

TCAs block:

- α_1 adrenergic receptors
- H₁ histamines receptors
- M₁ cholinergic receptors
- 5HT₂ receptors



Adverse Effects of TCAs

- ❑ **Anti-cholinergic**: Dry mouth, blurred vision, constipation & urine retention, aggravation of glaucoma.
- ❑ **Anti-histaminic**: Sedation, confusion.
- ❑ **Anti-adrenergic** → Postural hypotension, arrhythmias, conduction defects.
- ❑ Weight gain, sexual dysfunction & impotence
- ❑ Lower seizure threshold

TCAs have narrow therapeutic index → toxicity can develop; excitement, , convulsions,, coma, atropine like- effects, cardiac arrhythmias, sudden death


- **TADs have a large volume of distribution therefore hemodialysis is not effective for Rx of TCA toxicity also they are bound to plasma proteins.**

Therapeutic uses of TCAs

- Endogenous (Major) Depression -- moderate to severe.
- Panic attack /acute episode of anxiety.
- **Imipramine is used for treatment of nocturnal enuresis in children and geriatric patients as it constricts internal urethral sphincter (anti-muscarinic effect).**
- Generalized Anxiety Disorder (GAD).
- Obsessive Compulsive Disorder (OCD)
- Attention Deficit Hyperkinetic Disorder (ADHD).
- Chronic neuropathic pains or unexplained body pains.



Interaction of TCAs with other drugs

- ❑ TCA are strongly bound to plasma protein, therefore their effect can be potentiated by drugs that compete for their plasma protein binding site (Aspirin and Phenylbutazone).
- ❑ TCAs are metabolized by liver microsomal enzymes, therefore their effect can be reduced by inducers (Barbiturates), or potentiated by inhibitors of liver enzymes (Oral contraceptives, Antipsychotics, and SSRIs).
- ❑ TCAs (inhibitors of monoamine reuptake) should not be given with MAOIs (inhibitors of monoamine degradation) “serotonergic and hypertensive crisis”. 
- ❑ Additive to antipsychotics & anti-parkinsonisms → ↑ anti-cholinergic effects.

Contraindications

- ❑ TCAs should not be used in patients with **Glaucoma** or with **enlarged prostate** because of their **atropine-like action**.
- ❑ TCAs (given alone) are **contraindicated in manic-depressive illness**, because they tend to "switch" the depressed patient to the "manic" phase, therefore, they should be combined with "lithium salts".
- ❑ **Seizure disorders**

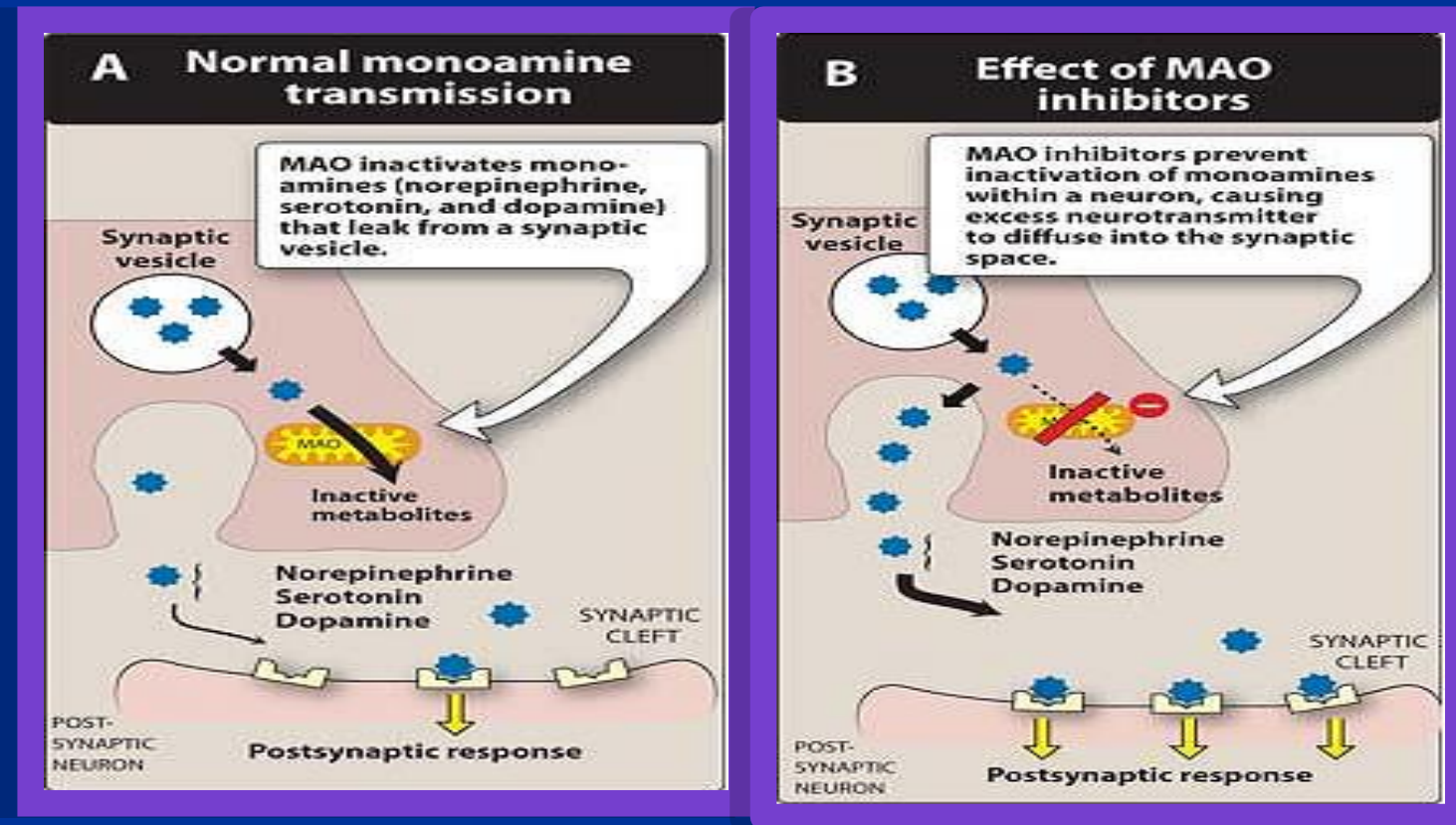
Monoamine Oxidase Inhibitors

- **Clinical Uses:** Only used for refractory cases and in atypical depression where phobia and anxiety are prominent symptoms.
- Limited use now because;
 - ➔ ADR, Food & Drug Interactions
 - ➔ Low antidepressant efficacy
- = **Low benefit/risk ratio**

Monoamine Oxidase

- ❑ MAO is a mitochondrial enzyme found in nearly all tissues
- Two forms of monoamine oxidase exist:
 - **MAO-A** responsible for NE, 5-HT catabolism. It also metabolizes tyramine of ingested food
 - MAO-B is more selective for dopamine metabolism

Monoamine Oxidase Inhibitors (MAOIs)



Monoamine Oxidase Inhibitors (MAOIs)

1- Non Selective Inhibitors (MAO-A & MAO-B)

- Irreversible → Phenzelzine, long acting
- Reversible → Tranylcypromine

2- Selective Reversible Inhibitors

- → Moclobemide, (MAO-A) (antidepressant action, Short acting)
- → Selegiline, (MAO-B) (used in the treatment of Parkinsonism)
- ❖ The effect of irreversible MAOIs persists for a period of 2-3 weeks after stopping treatment, time needed by the body to synthesize new enzyme.

Side Effects of MAOIs

- 1- Antimuscarinic effects.
- 2- Postural hypotension.
- 3- Sexual dysfunction mainly with phenelzine.
- 4- Sedation, sleep disturbance.
- 5- Weight gain.
- 6- Hepatotoxicity (phenelzine).

MAO inhibitors

	Drug	Sedation	Anticholinergic effects	Hypotension
Non-selective irreversible	Isocarboxazid	+	++	+
	Phenelzine	+	++	+
	Tranlycypromine	-	+	+
Selective reversible	Moclobemide	-	-	-

MAOIs interaction with tyramine 'cheese reaction'

- ❑ This occurs when Tyramine rich foods are taken with MAOIs.
- ❑ Tyramine rich foods include Old cheese , Concentrated yeast products, Pickled or smoked fish, Red beans, Red Wine, Chicken liver, Sausages.
- ❑ **Tyramine** in food is normally degraded in the gut by **MAO-A**.



- ❑ Since the enzyme is inhibited by MAOIs, **tyramine** from ingested food is absorbed, and then taken up into adrenergic neurons where it is converted into **octopamine** - a false transmitter which causes massive release of **NE** and may result in **hypertensive crisis** ; severe hypertension, severe headache and fatal intracranial haemorrhage.
- ❑ **The special advantage claimed for Moclobemide is that, No cheese reaction occurs with its use.**

Drug interactions of MAOIS

1- Pethidine:

MAOIs interact with the **opioid receptor agonist (pethidine)** which may cause **severe hyperpyrexia, restlessness, coma, hypotension**. The mechanism still unclear – but it is likely that an abnormal pethidine metabolite is produced because of inhibition of normal demethylation pathway.

2- Levodopa:

Precursor of dopamine can interact with **MAOIs** leading to **mania** and **hypertensive crisis**.

Drug interactions of MAOIs

3- Amphetamine and Ephedrine:

Indirectly acting sympathomimetics can interact with **MAOIs** causing the liberation of accumulated monoamines in neuronal terminals leading to **hypertensive crisis**.

4-TCAs (inhibitors of monoamine reuptake) can interact with **MAOIs** (inhibitors of monoamine degradation) leading to **hypertensive crisis**.

5- MAOIs & SSRIs ----- Serotonin syndrome (give 1-2weeks gap before initiating SSRIs).

To be continued...