

BILIARY PASSAGES & PANCREAS

Objectives:

The student should be able to identify & describe the histological features of:

1. Intrahepatic biliary passages.
2. Extrahepatic bile ducts.
3. Gall bladder.
4. Exocrine pancreas.

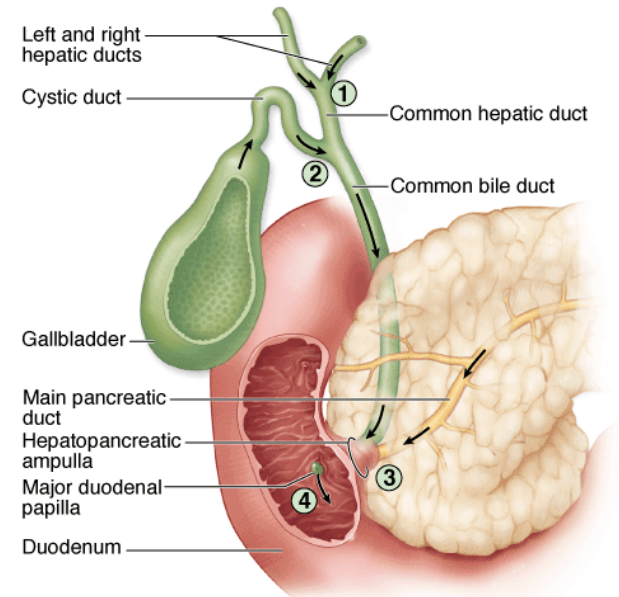
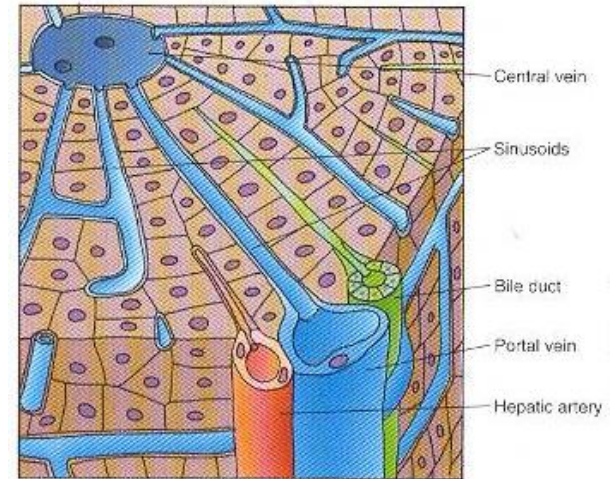
Biliary Passages

Intrahepatic passages:

- 1- Bile canaliculi.
- 2- Bile ductules (canals of Hering).
- 3- Interlobular bile ducts.

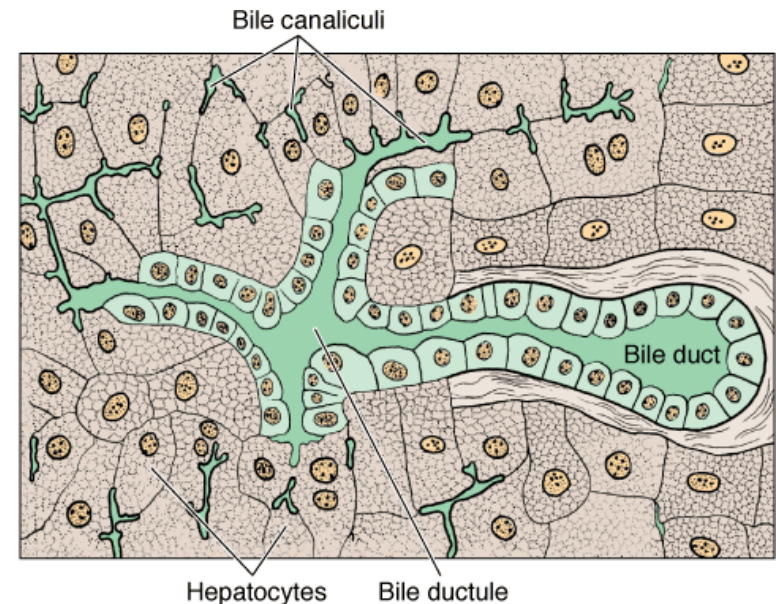
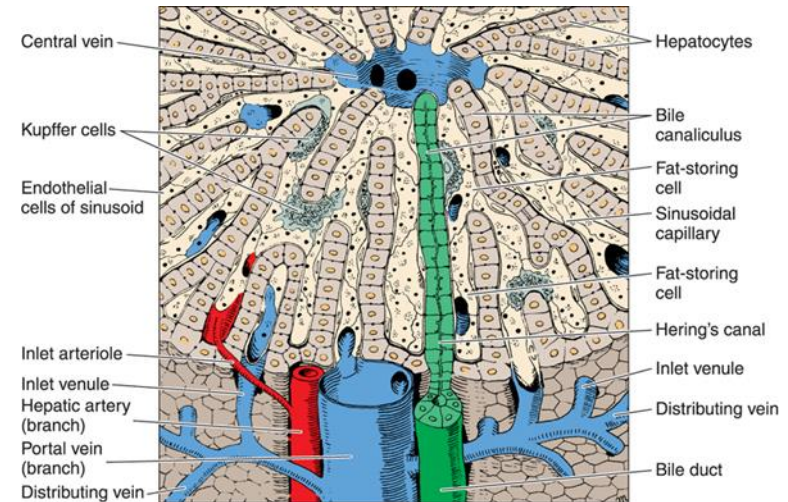
Extrahepatic passages:

- 4- Right & left Hepatic ducts.
- 5- Common hepatic duct.
- 6- Common bile duct.



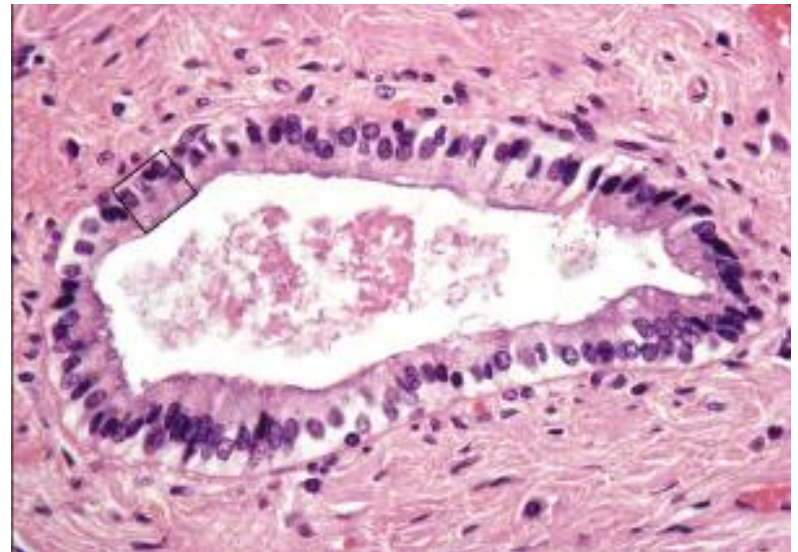
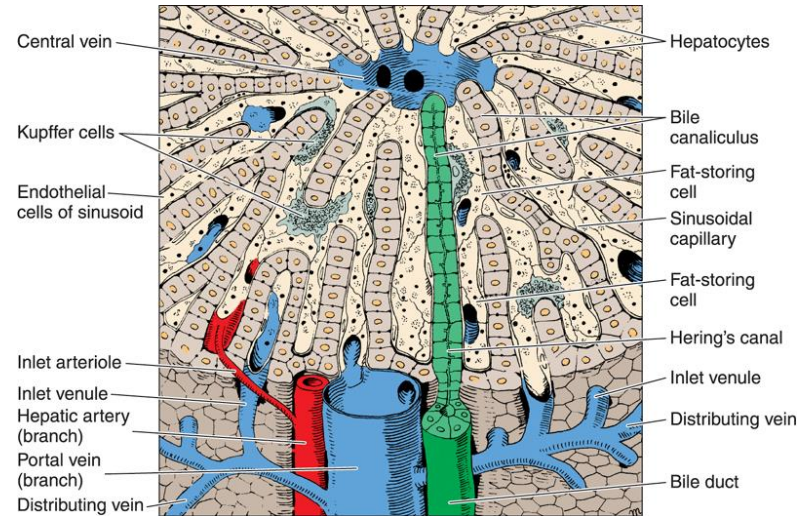
Bile Ductules (Canals of Hering)

- Near the peripheral portal areas, bile canaliculi empty into **bile ductules** composed of cuboidal epithelial cells called **cholangiocytes**.
- After a short distance, these ductules collect and end in the **interlobular bile ducts** in the portal areas.



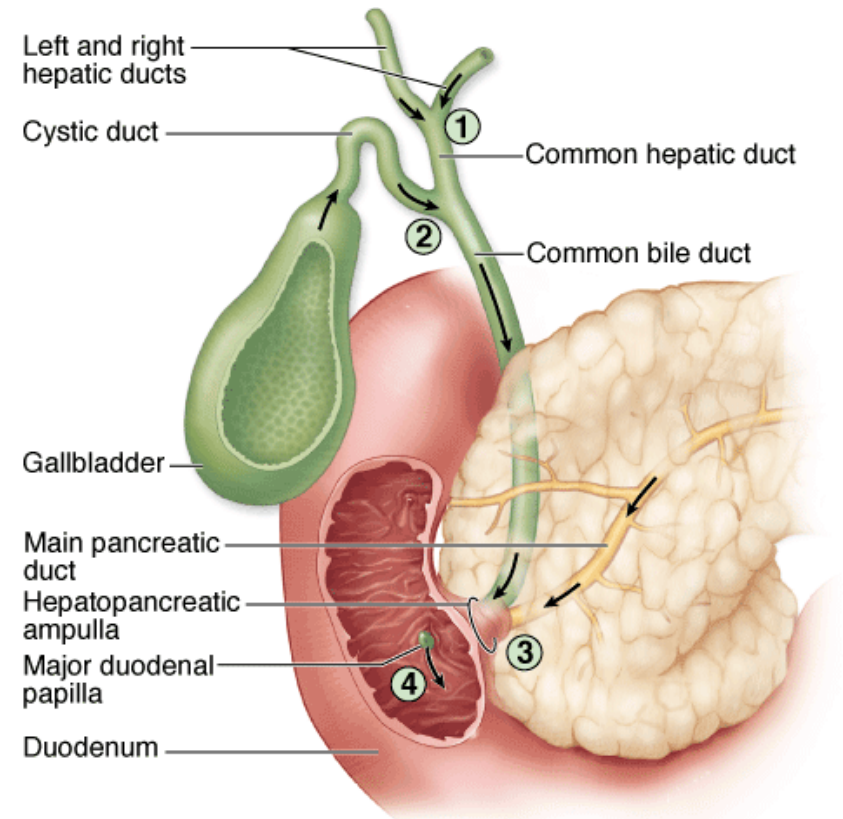
Interlobular Bile Ducts

- Are in the portal areas.
- Lined by **simple cuboidal epithelium** (becomes simple columnar epithelium near the porta hepatis).
- Interlobular bile ducts merge to form larger ducts, which eventually unite to form the right and left hepatic ducts.



Common Hepatic Duct

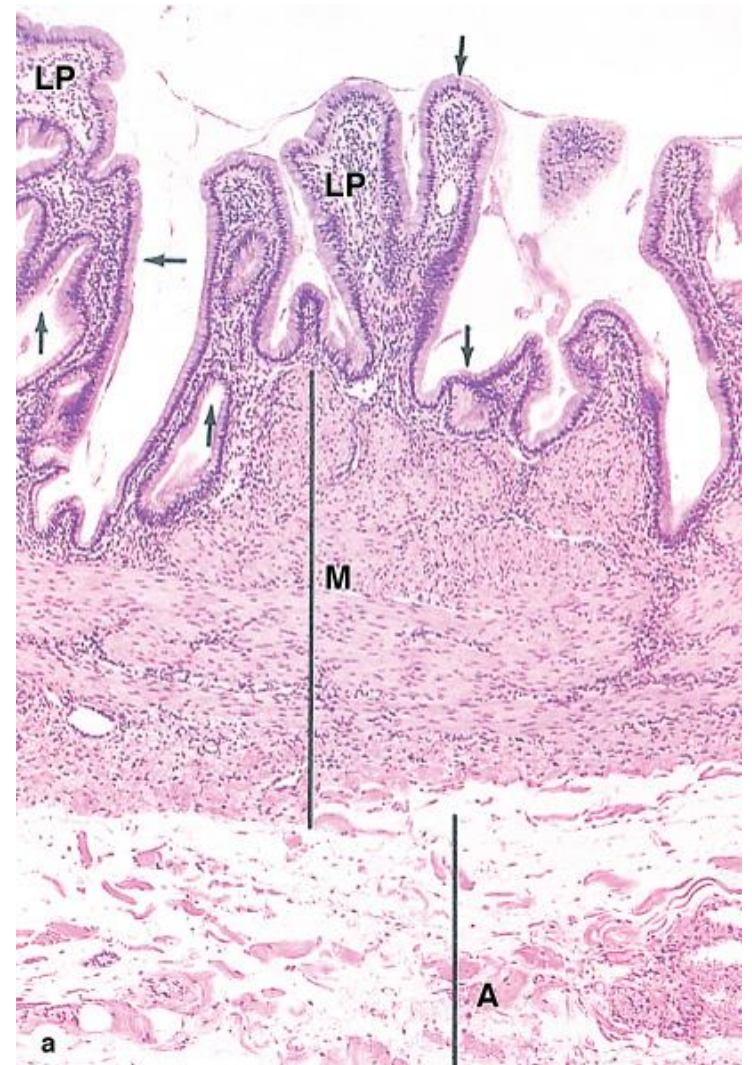
- Formed by union of the right & left hepatic ducts. It joins the cystic duct, arising from the gallbladder, forming the common bile duct.
- Similar in structure to the wall of gall bladder and other extrahepatic bile ducts.
- **Mucosa:**
 - Epithelium: Simple columnar.
 - Lamina propria.
- **Muscularis:** bundles of smooth muscle fibers in all directions.
- **Adventitia.**



Gall Bladder

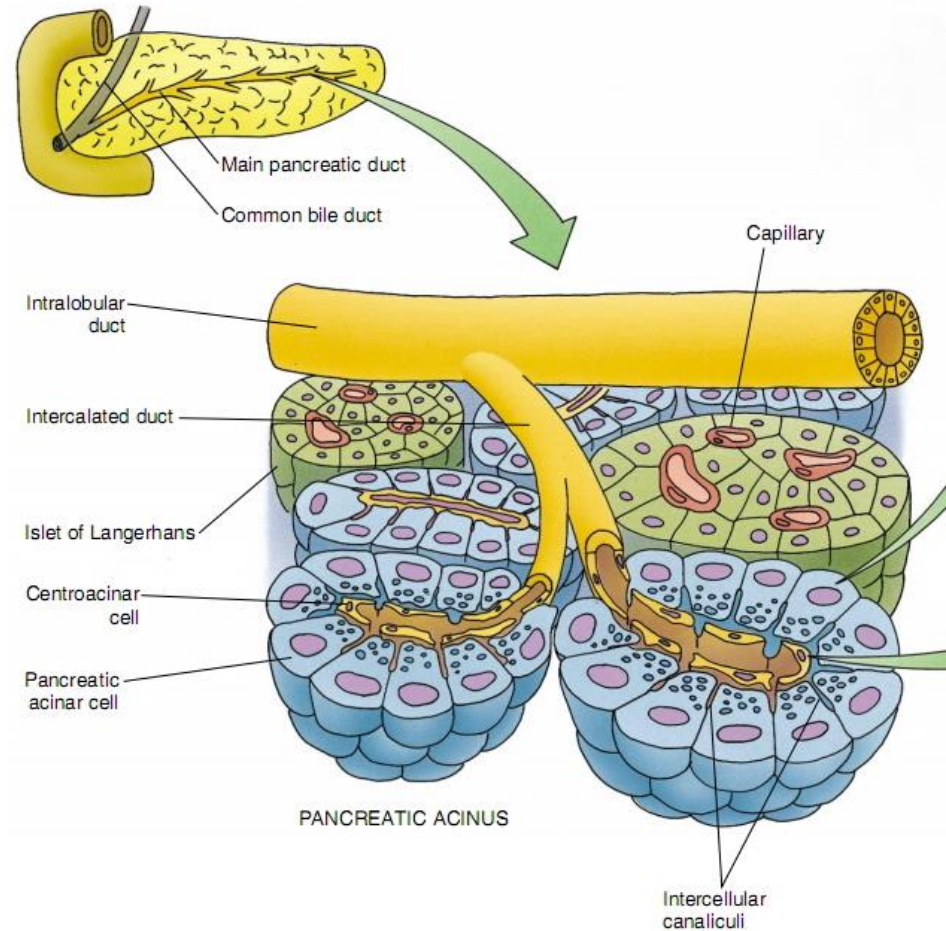
A saclike structure that stores, concentrates and releases bile. Its wall is formed of:

- **Mucosa:** highly folded.
 - Simple columnar epithelium.
 - Lamina propria: contains mucous glands in the neck of gall bladder.
- **Muscularis:** bundles of smooth muscle fibers oriented in all directions.
- **Serosa** or **adventitia.**



PANCREAS

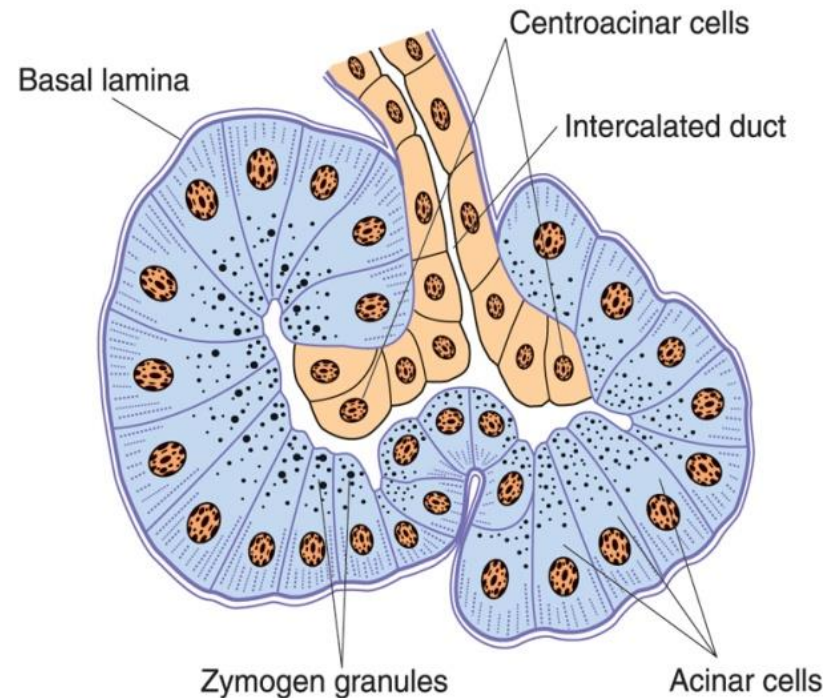
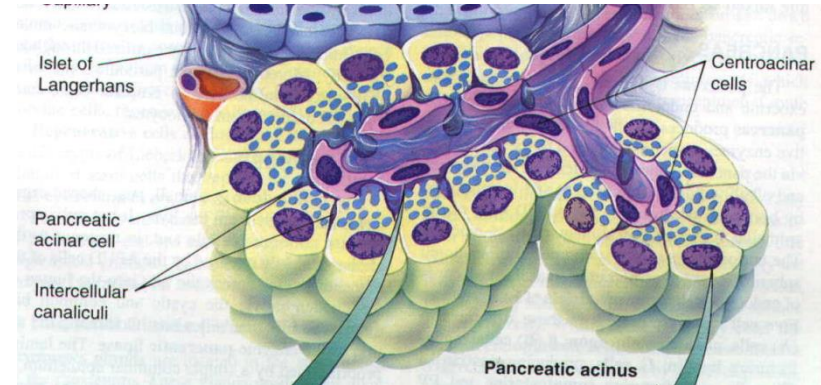
- **Stroma:** capsule, septa & reticular fibers.
- **Parenchyma:** Pancreas is a **mixed** gland:
 - **Exocrine part** (acini & ducts): produces **digestive pancreatic enzymes**.
 - **Endocrine part** (islets of Langerhans): produces **hormones**.



Exocrine Pancreas

Pancreatic Acini:

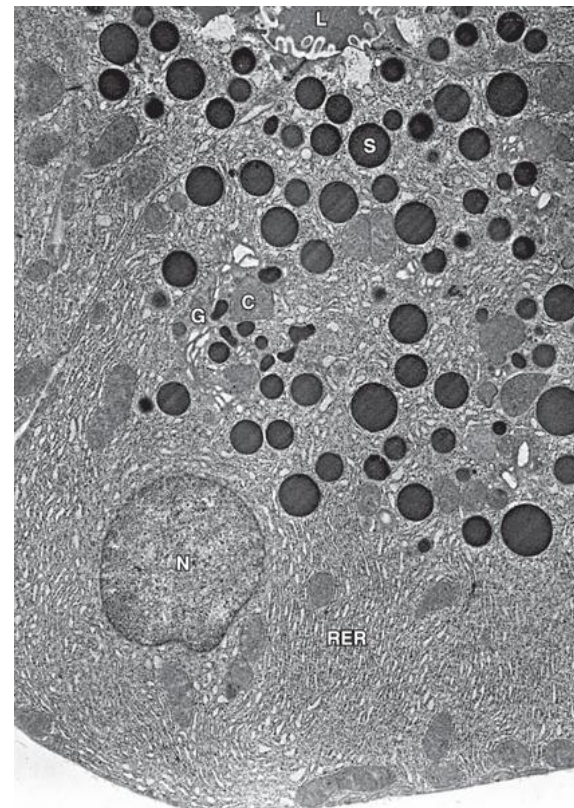
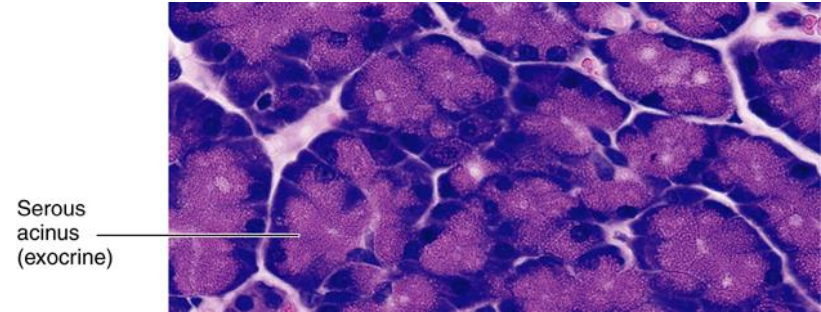
- They are serous acini: secreting a thin fluid rich in digestive pancreatic enzymes.
- Centroacinar cells: Their nuclei appear in the center of the acini. They represent the beginning of the ducts.
- No myoepithelial cells around the acini.



Exocrine Pancreas

Pancreatic Acinar Cells:

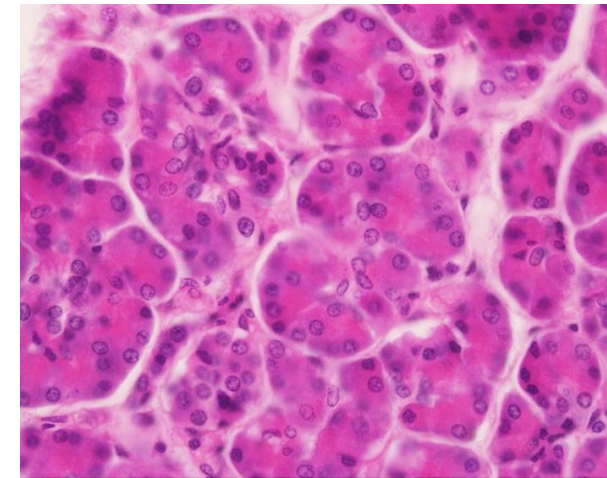
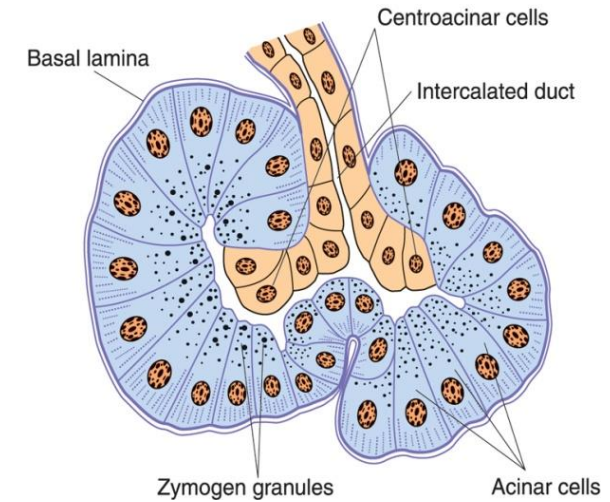
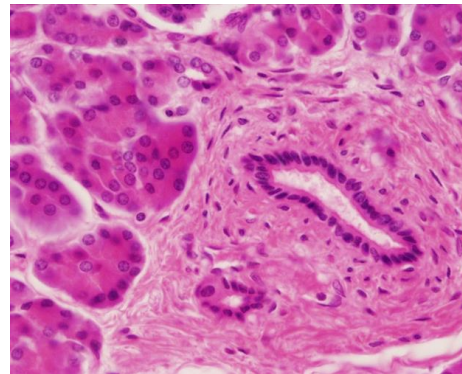
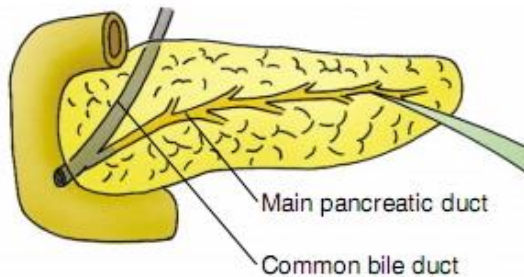
- Pyramidal in shape.
- Nuclei are basal.
- Cytoplasm:
 - Basal part basophilic (due to abundant rER).
 - Apical part acidophilic (due to secretory granules).

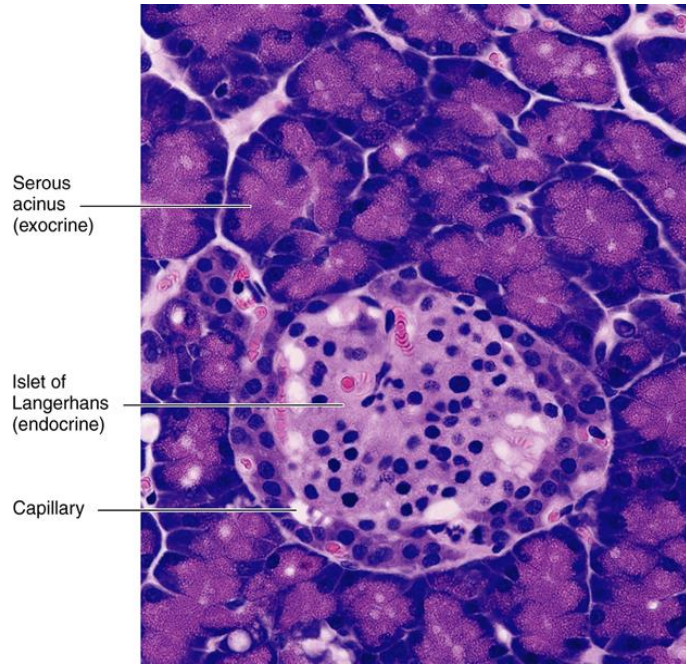
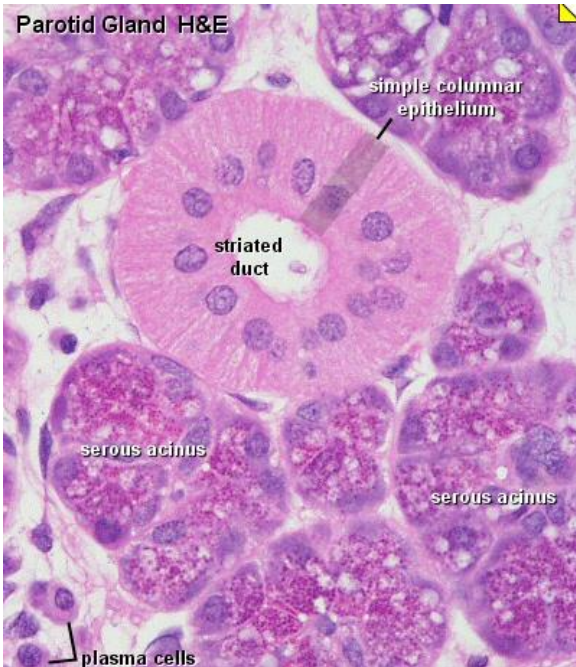
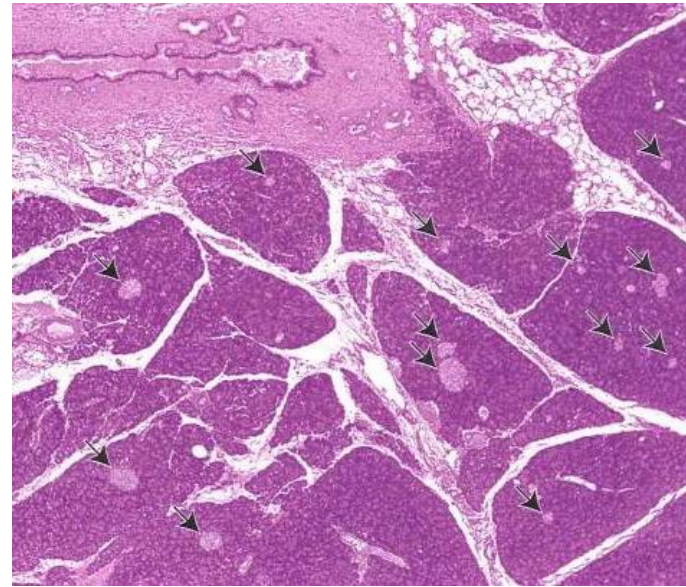
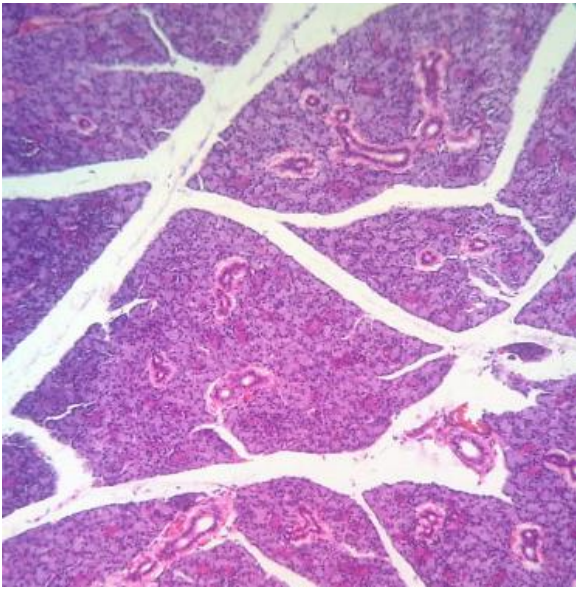


Exocrine Pancreas

Duct System:

- Centroacinar cells.
- Intercalated ducts (low cuboidal).
- Intralobular ducts (NOT prominent).
- Interlobular ducts.
- Main pancreatic duct.





Parotid gland

Pancreas

Best Wishes

