A thick black L-shaped frame is positioned on the left and right sides of the slide, framing the central text.

RADIOLOGY OF ESOPHAGUS AND STOMACH

Practical Session (1)

Radiology

ESOPHAGUS ANATOMY

What are the modalities can be used in imaging the esophagus?

- A. CT scan
- B. MRI
- C. Fluoroscopy
- D. US
- E. X-ray
- F. Nuclear medicine

What are the modalities can be used in imaging the esophagus?

A. CT scan

B. MRI

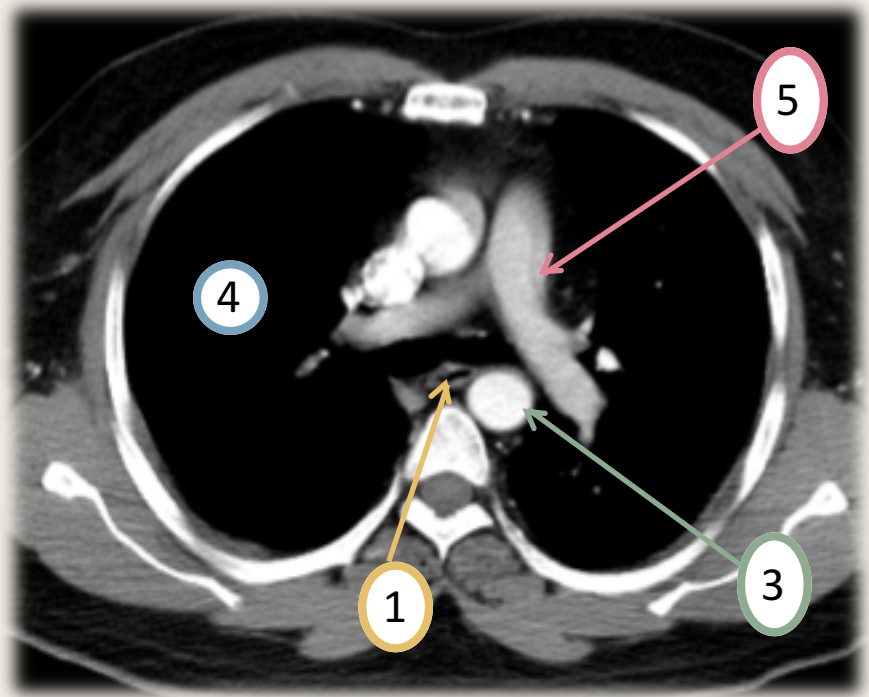
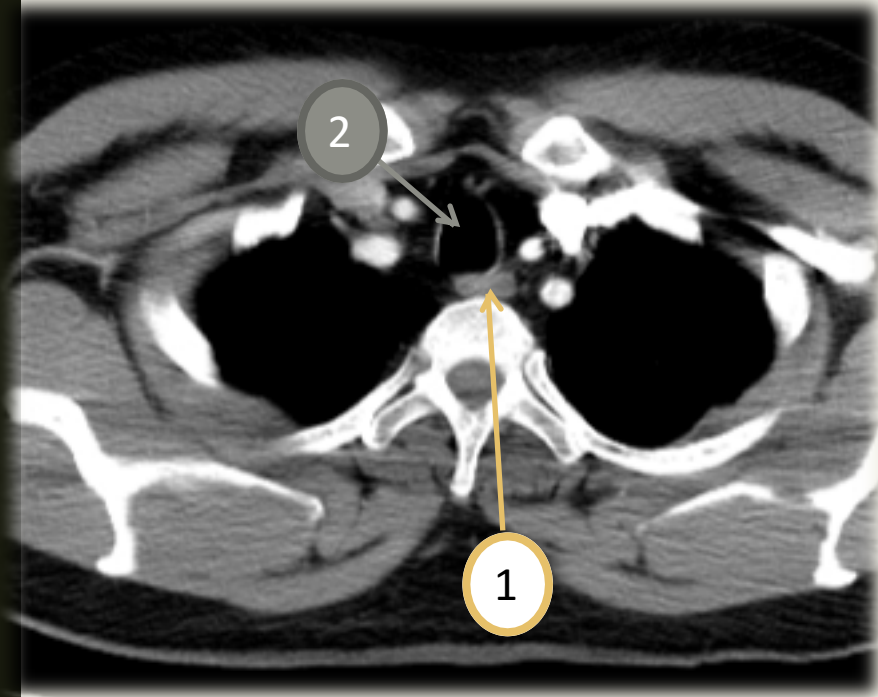
C. Fluoroscopy

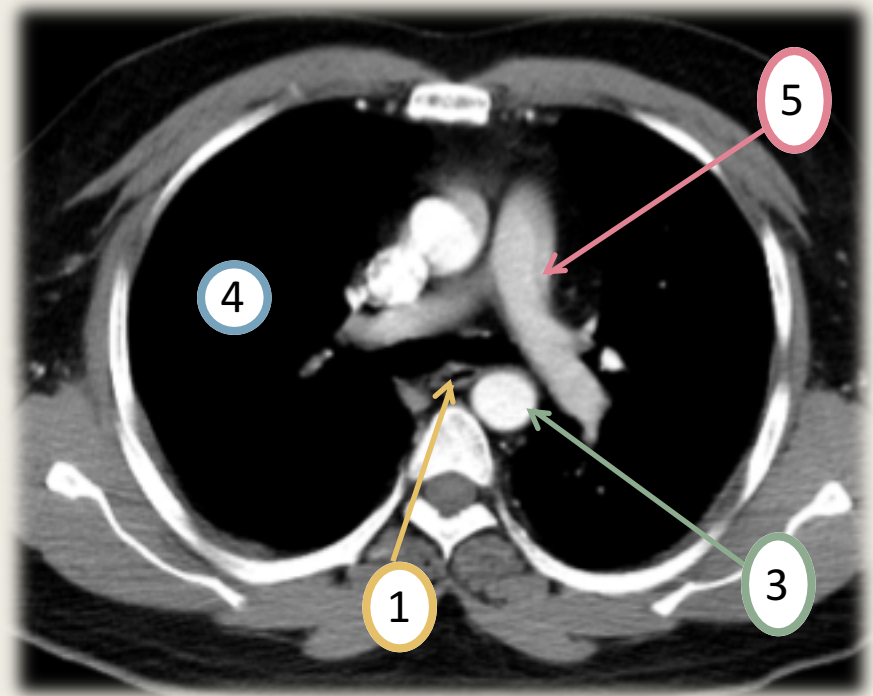
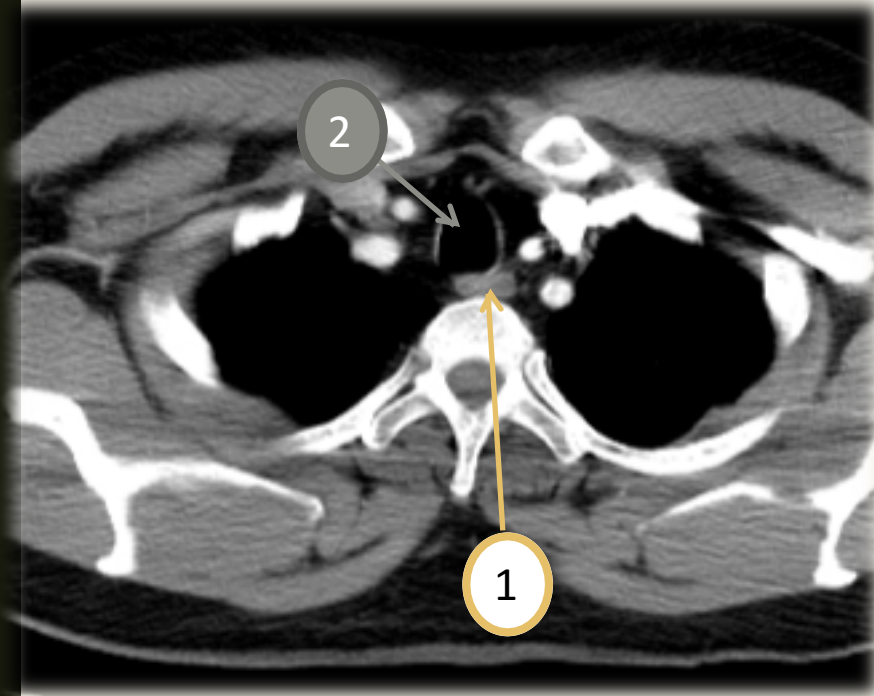
D. US

E. X-ray

F. Nuclear medicine

CT scan





1. Esophagus
2. Trachea
3. Aorta
4. Lung
5. Pulmonary artery

Fluoroscopy

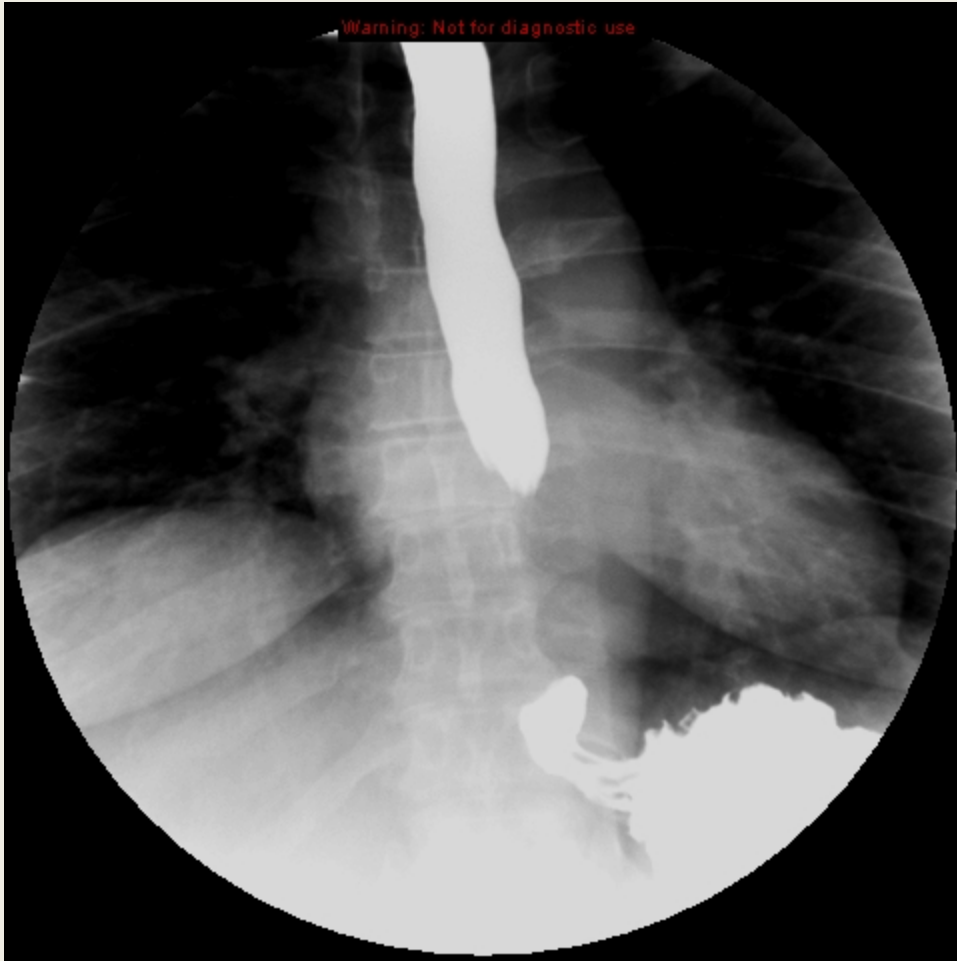
Warning: Not for diagnostic use



Warning: Not for diagnostic use



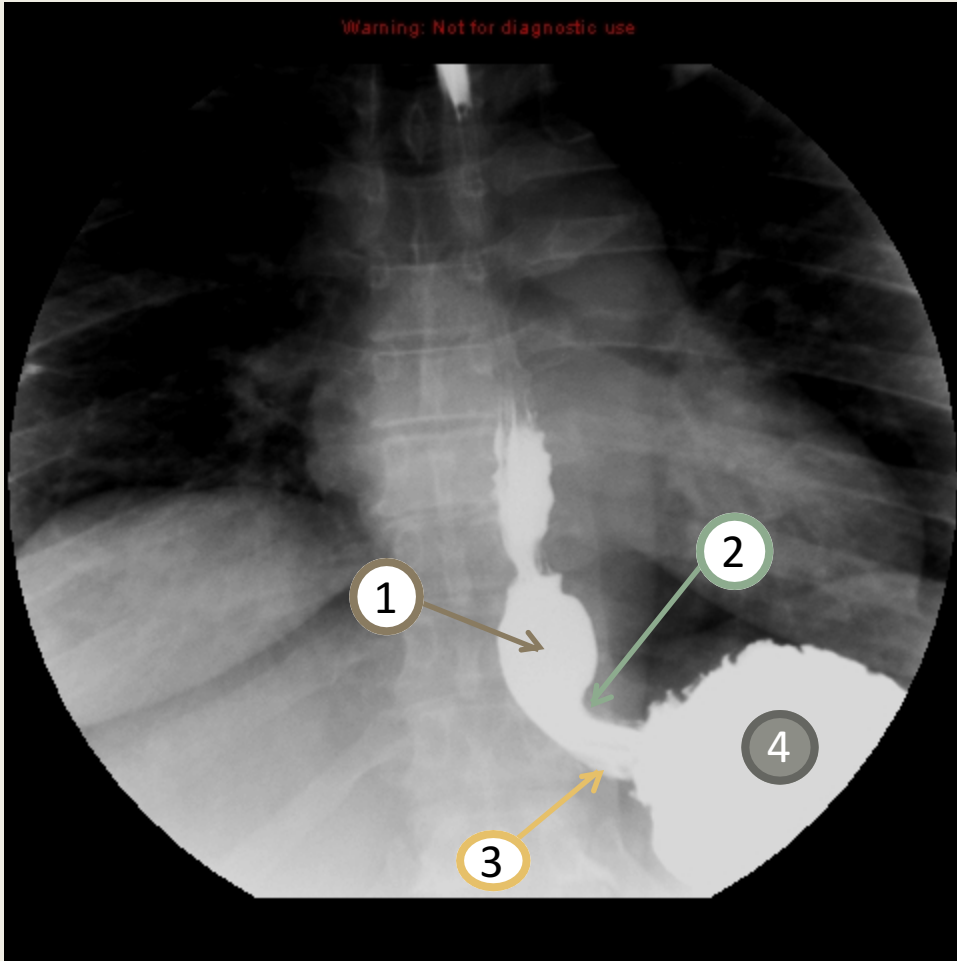
Warning: Not for diagnostic use



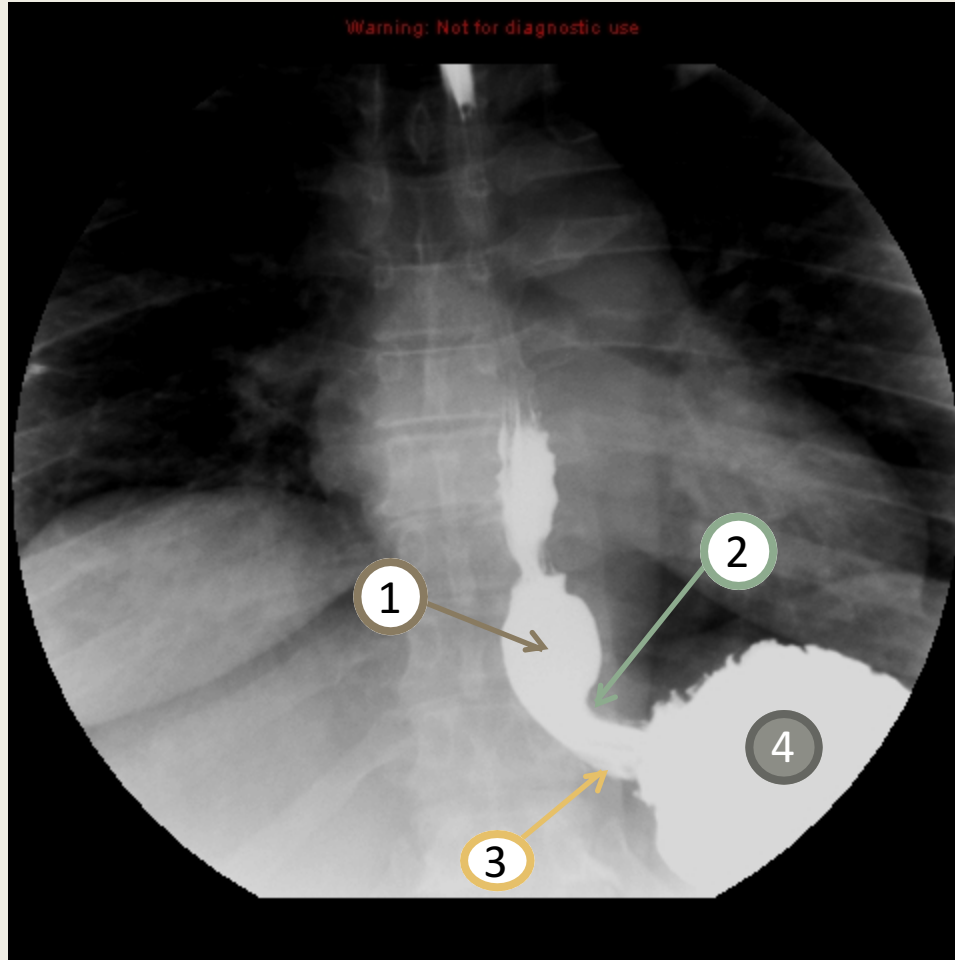
Warning: Not for diagnostic use



Warning: Not for diagnostic use



Warning: Not for diagnostic use



- 1-esophageal vestibule (ampulla).**
- 2- B ring.**
- 3- gastroesophageal junction.**
- 4- stomach (gastric fundus).**

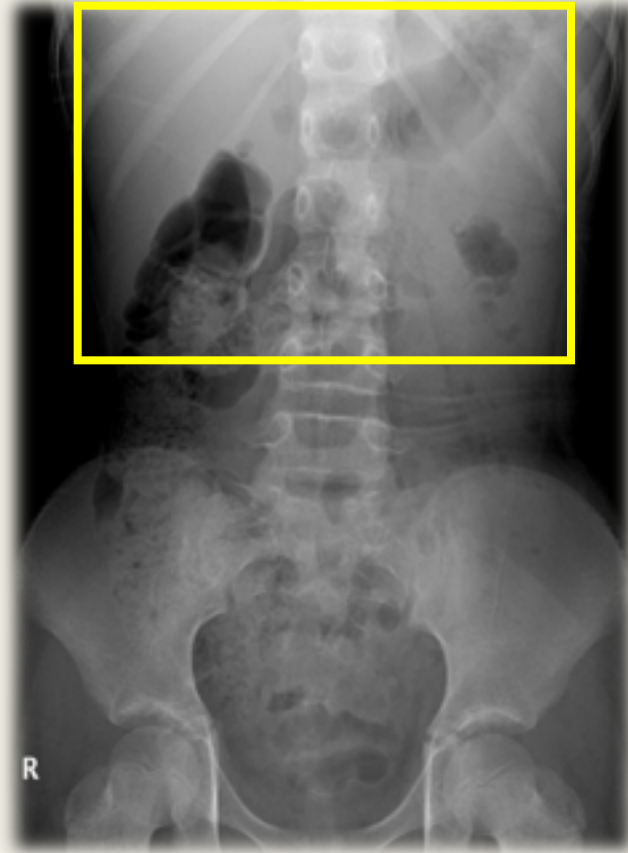
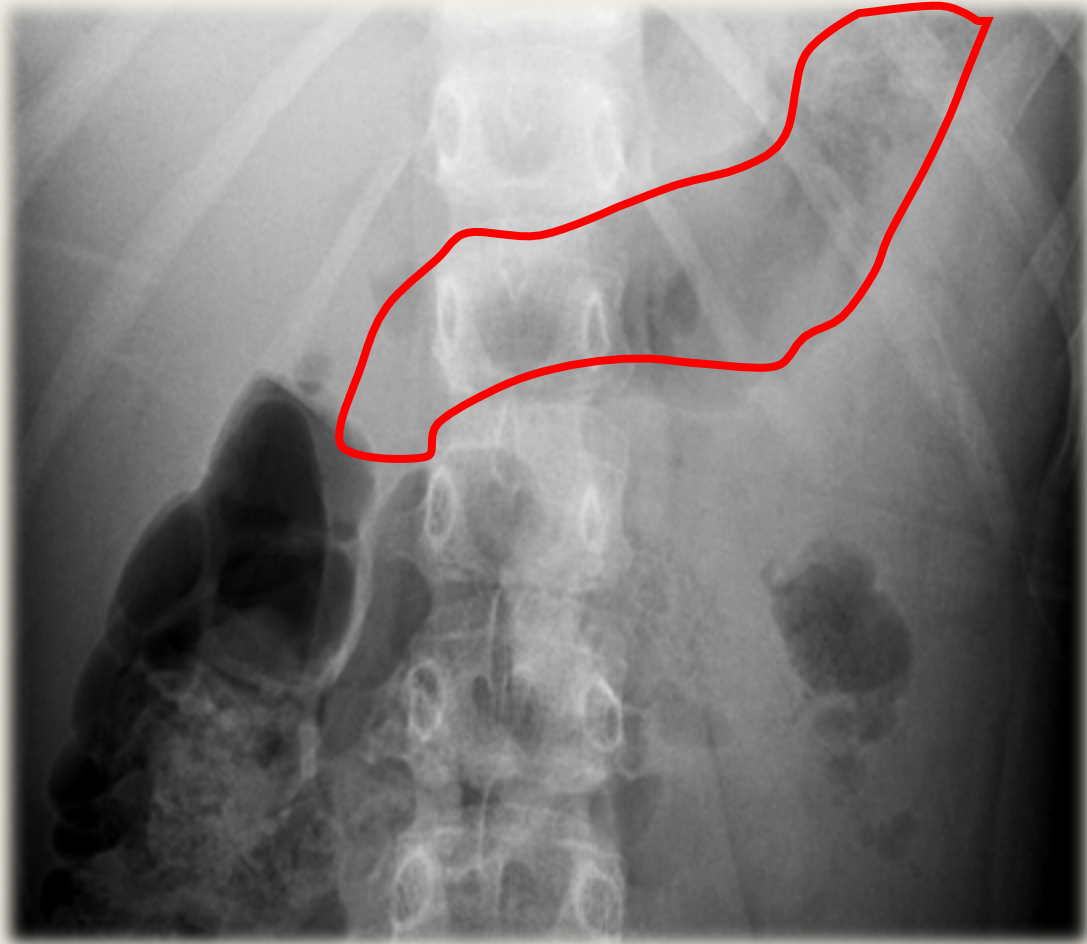


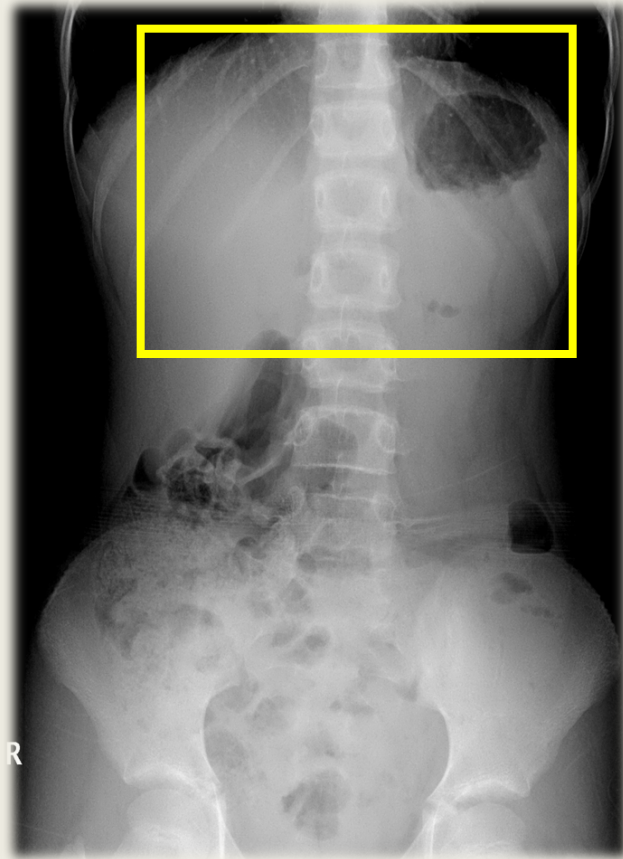
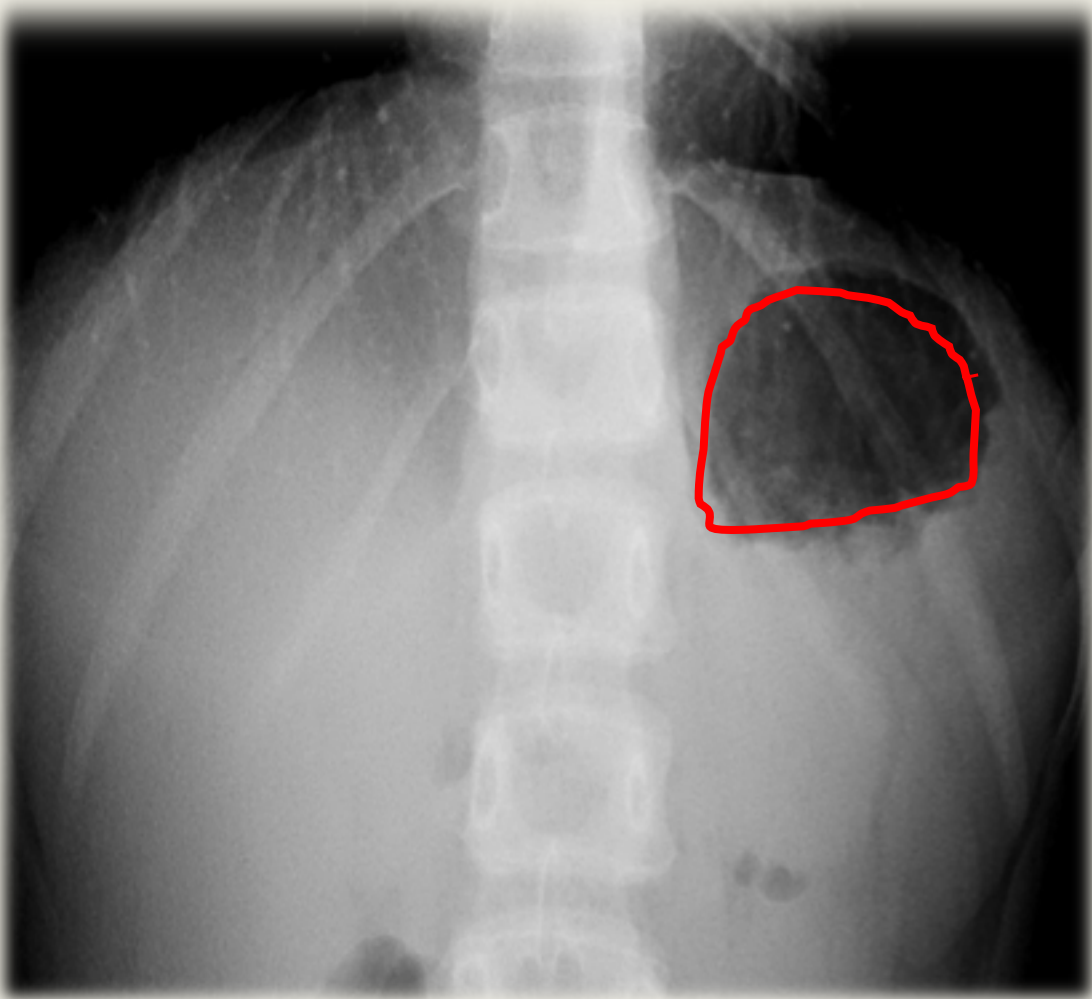
Abnormal esophagus (masses)

STOMACH ANATOMY

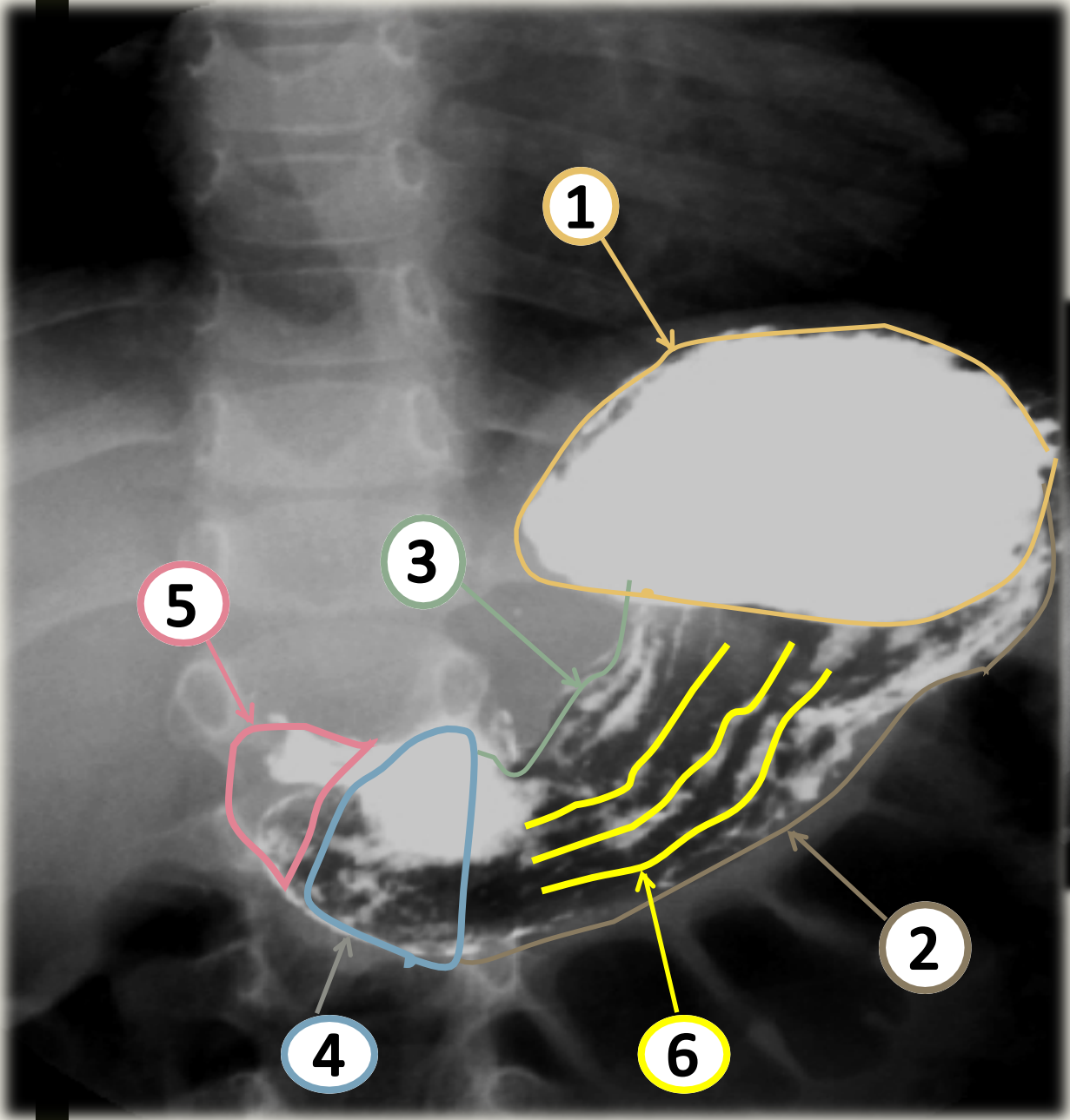
X RAY

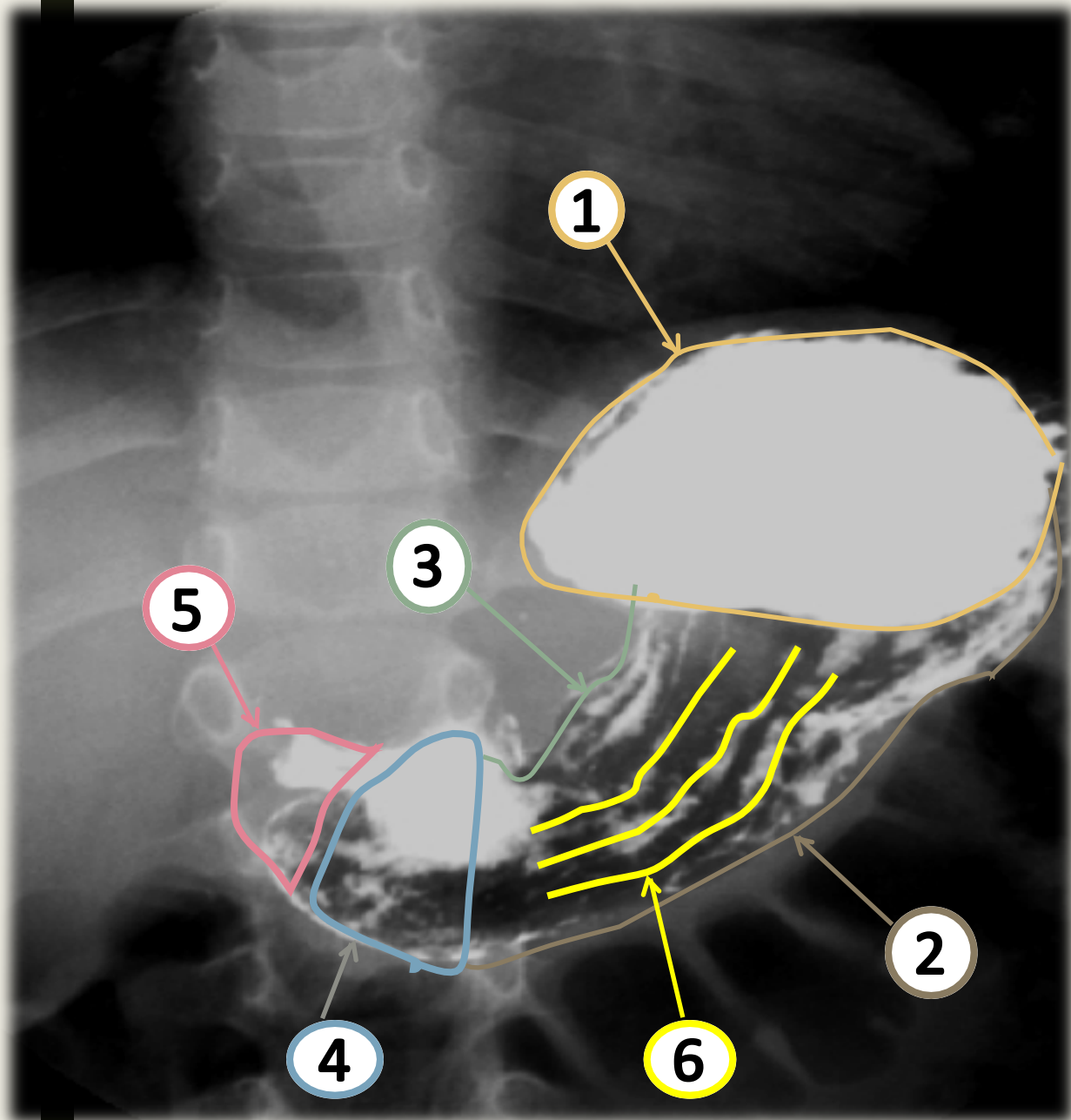




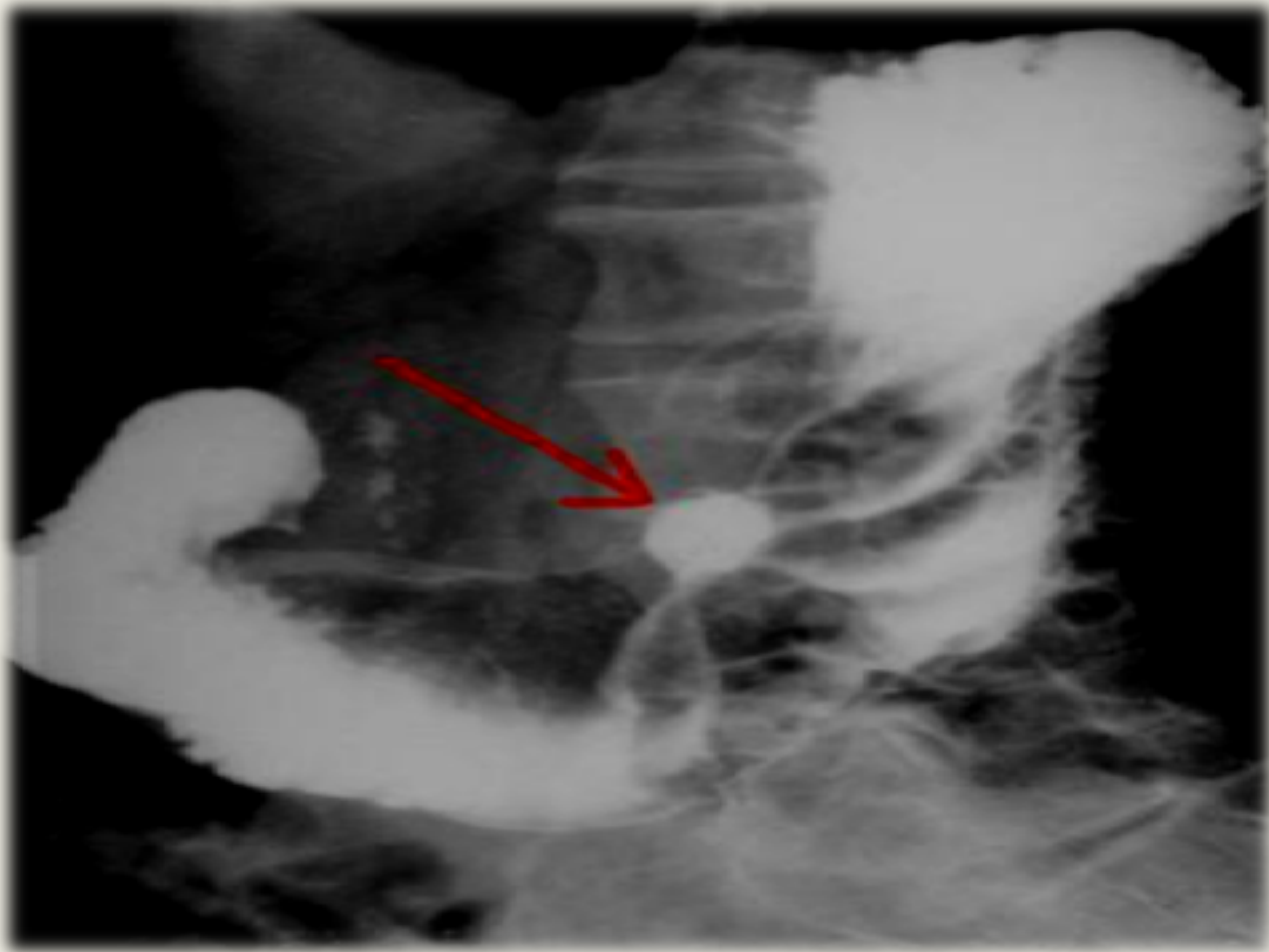


Fluoroscopy





1. Stomach fundus
2. Greater curvature
3. Lesser curvature
4. Antrum
5. Pylorus
6. Mucosal folds

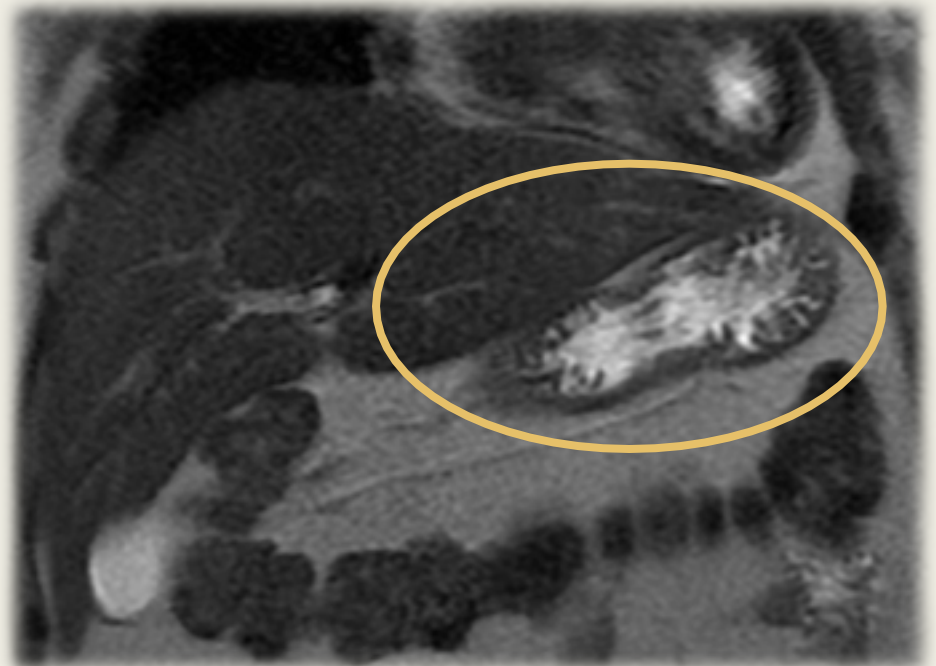


Gastric ulcer

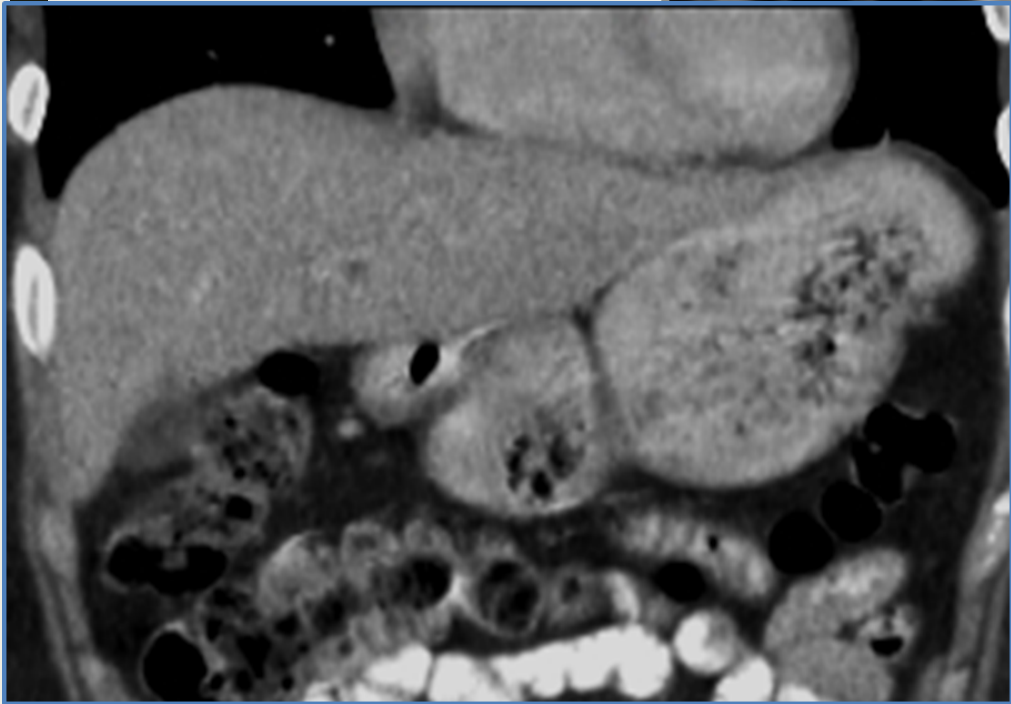
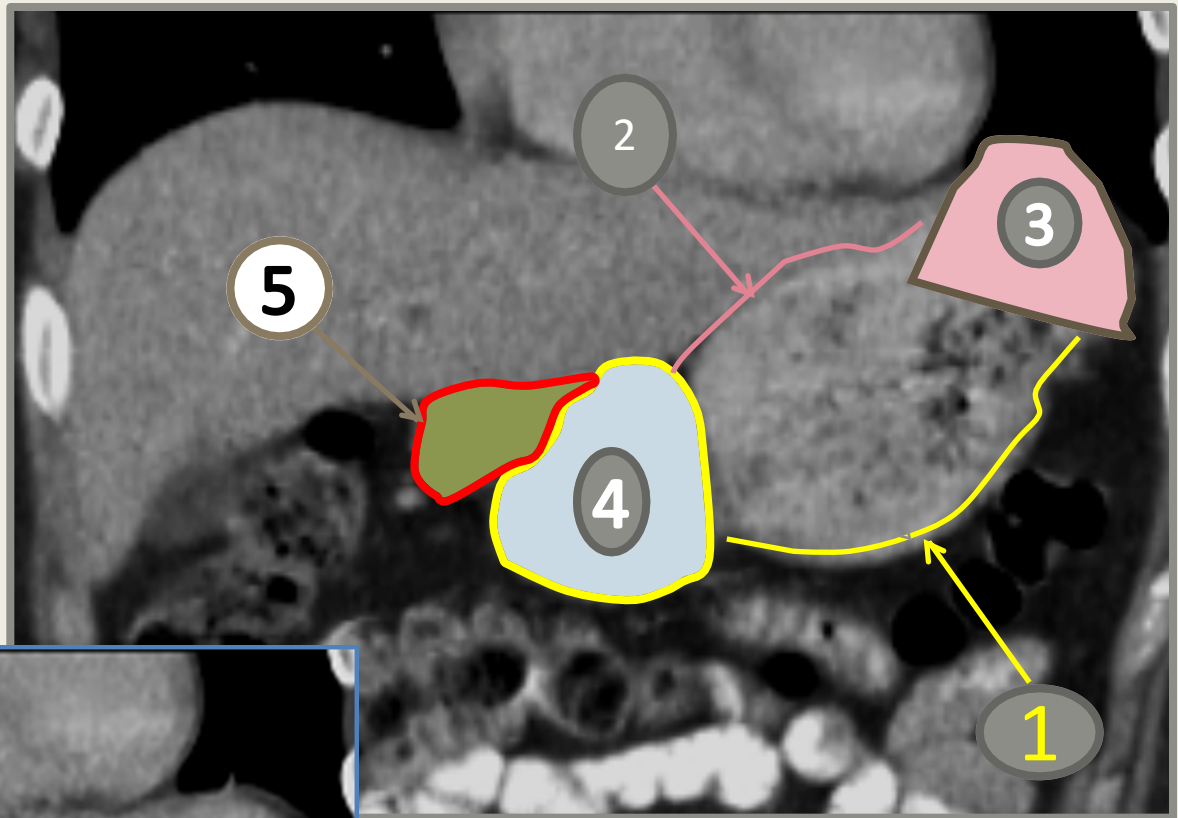
CT Scan vs MRI



CT SCAN



MRI

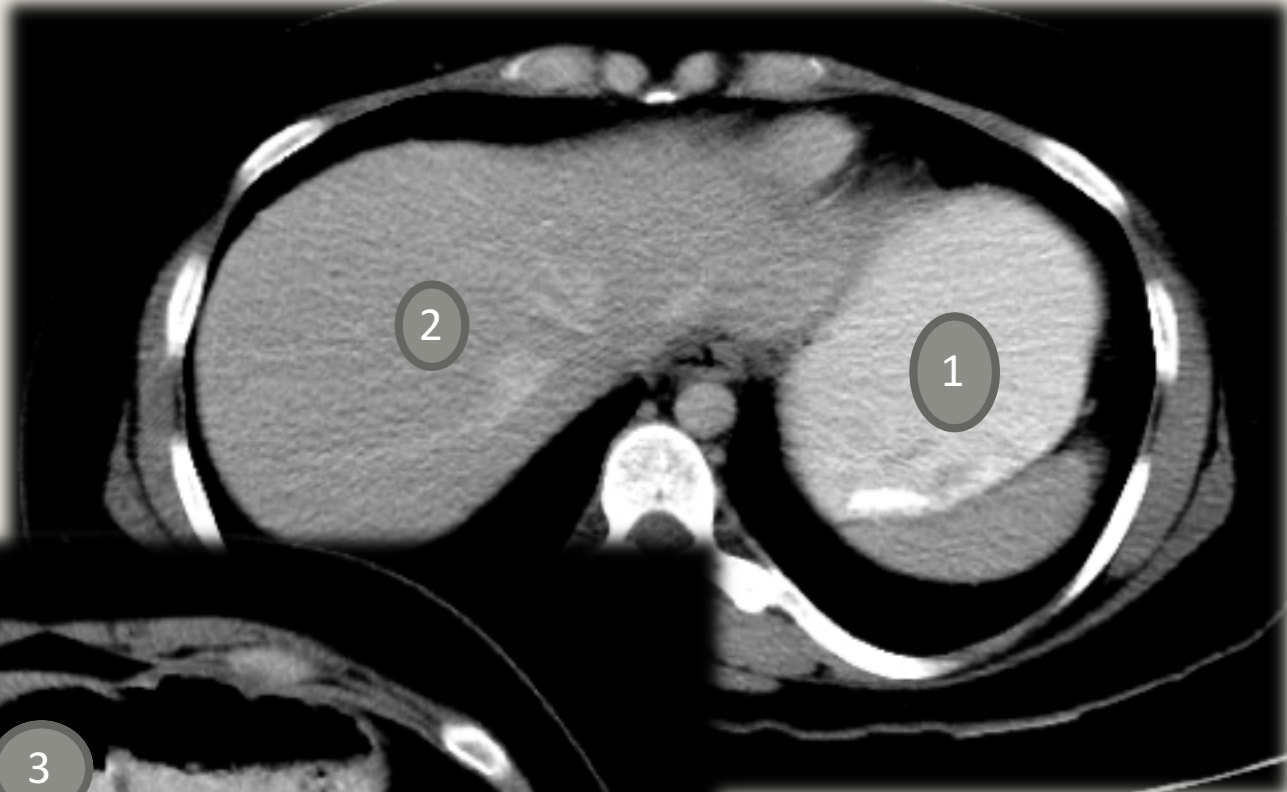




- 1-Greater curvature**
- 2-Lesser curvature**
- 3-Stomach fundus**
- 4-Antrum**
- 5-Pylorus**



1. Stomach
2. Liver
3. Antrum
4. Pylorus
5. Spleen
6. Kidney



Thank you

