

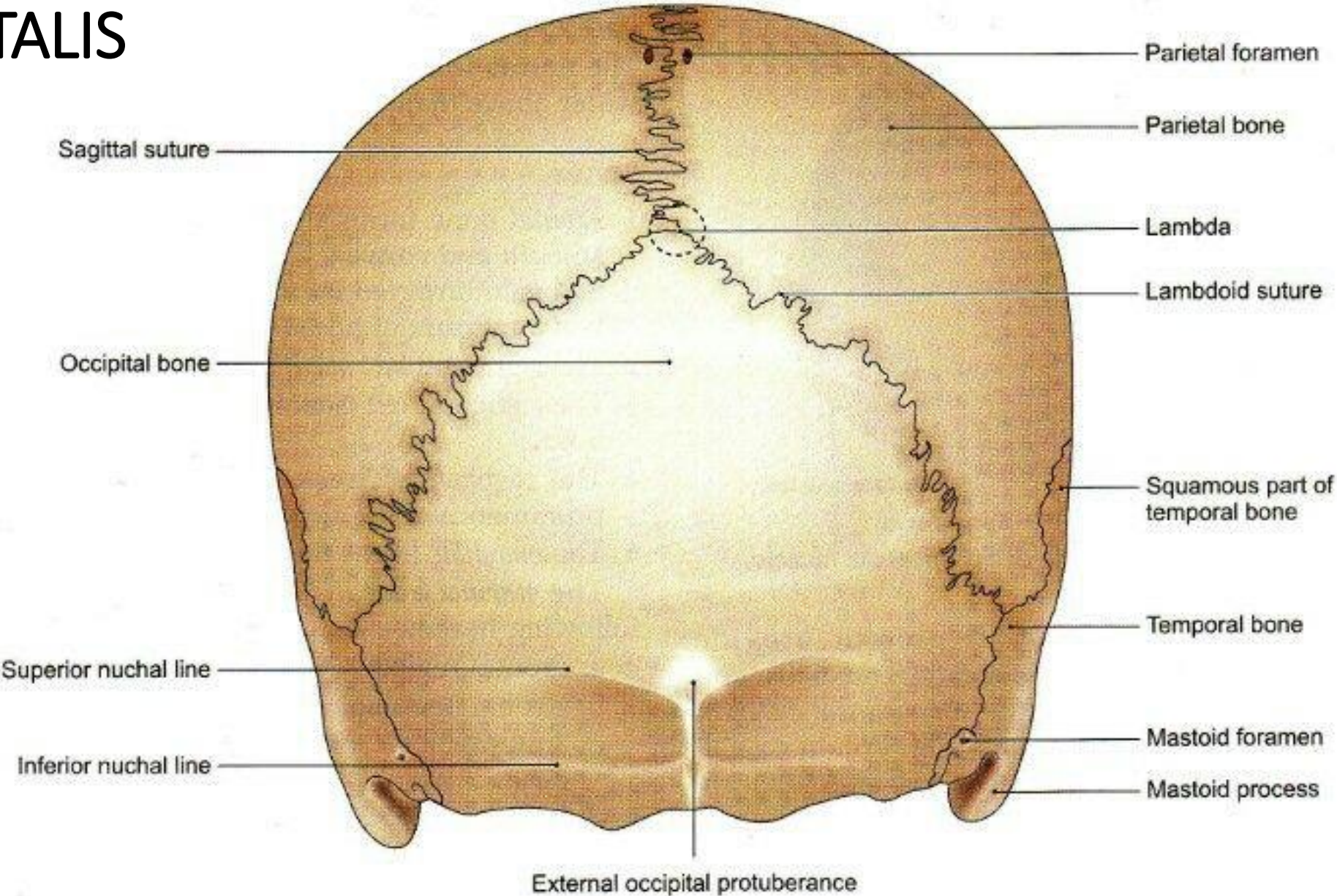
Skull

Anatomy Practical

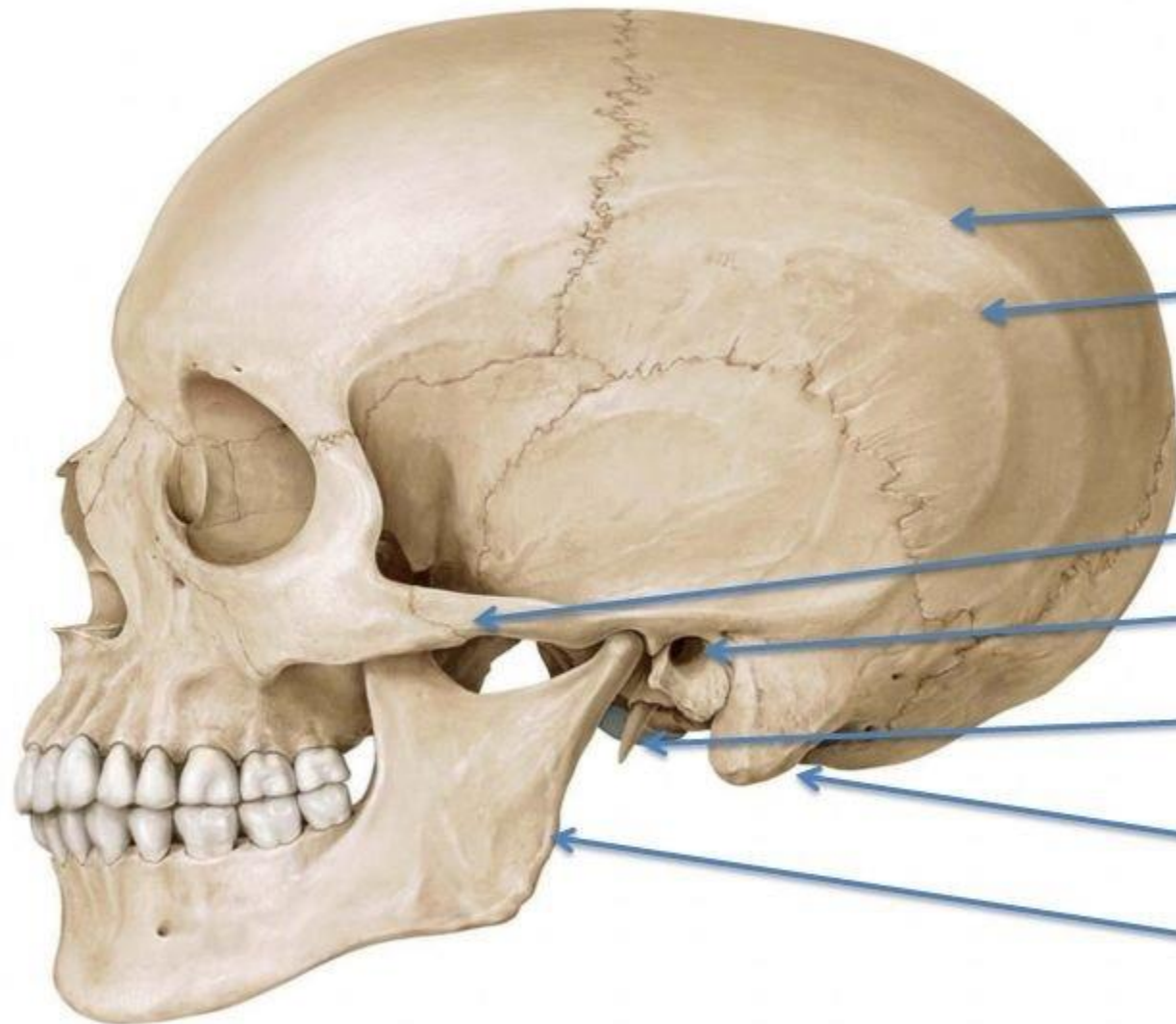
**By Dr. Hasem Darwish
Anatomy Department
College of Medicine
King Saud University**



NORMA OCCIPITALIS

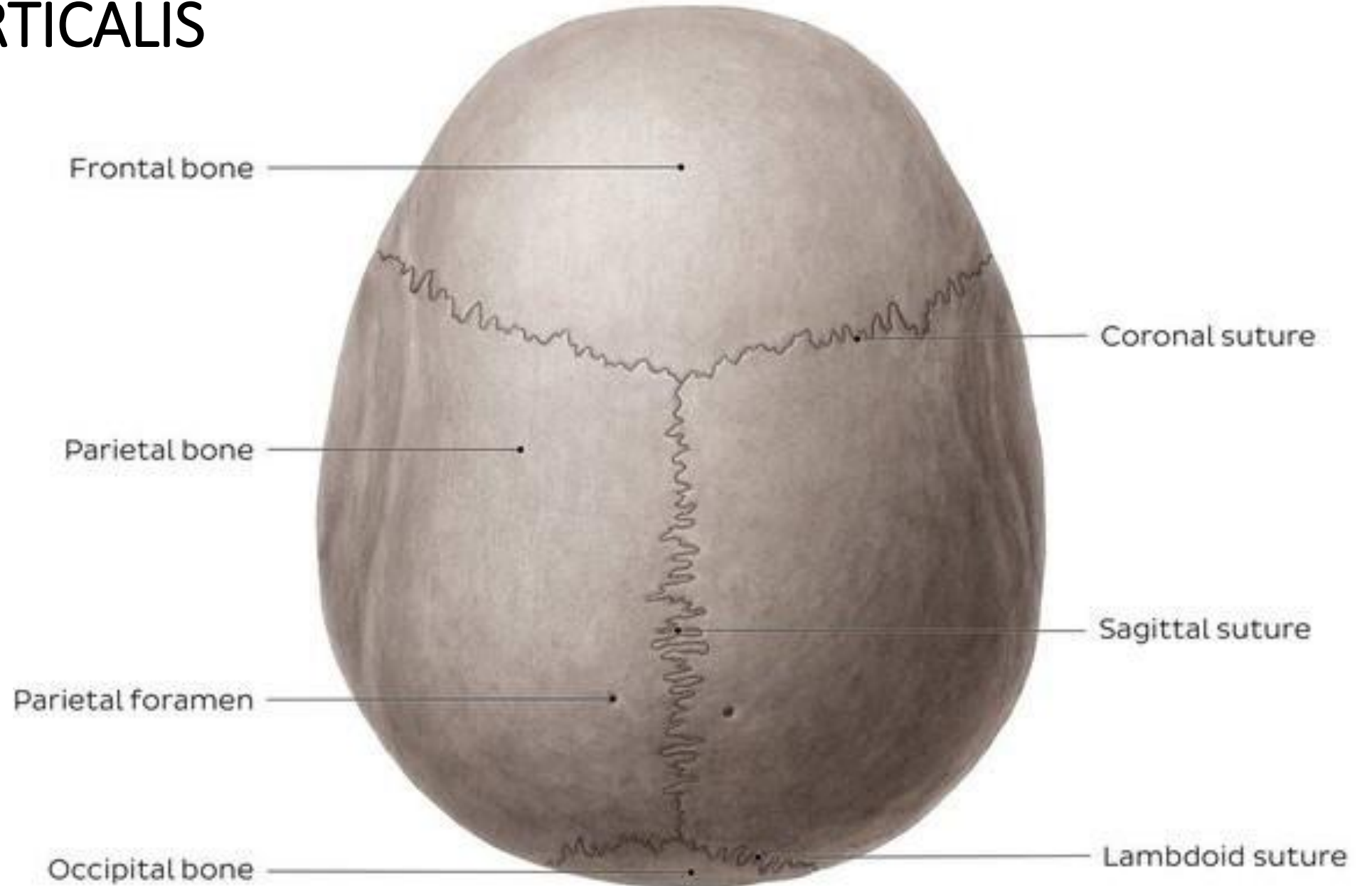


NORMA LATERALIS

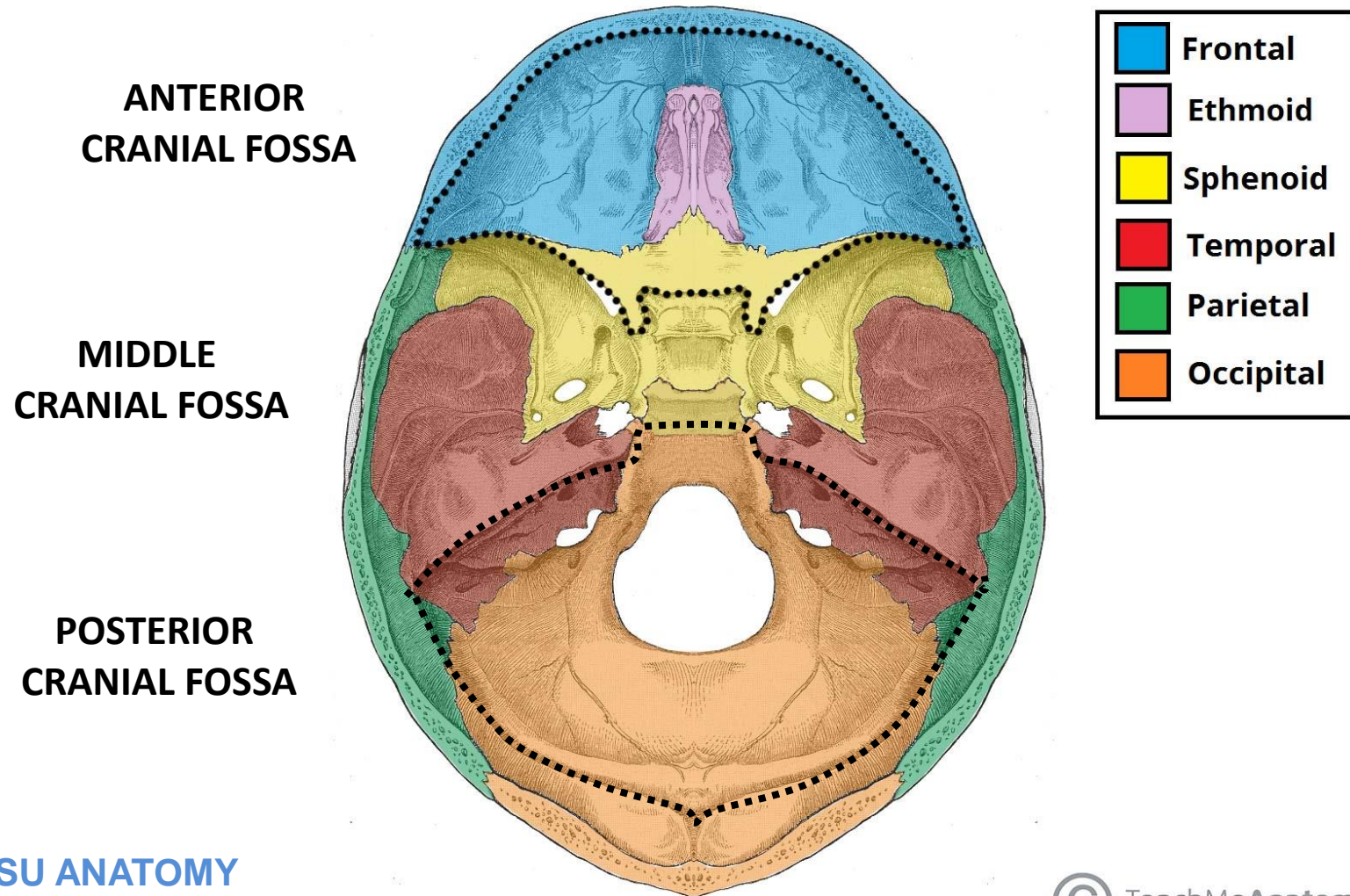


- Temporal lines
 - Superior
 - Inferior
- Temporal fossa (depression on side of skull)
- Zygomatic arch
- External acoustic meatus
- Styloid process of temporal bone
- Mastoid process
- Ramus of mandible

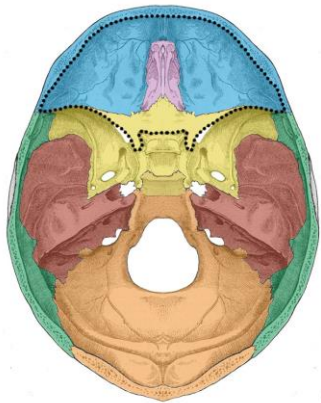
NORMA VERTICALIS



BONES FORMING CRANIAL CAVITY

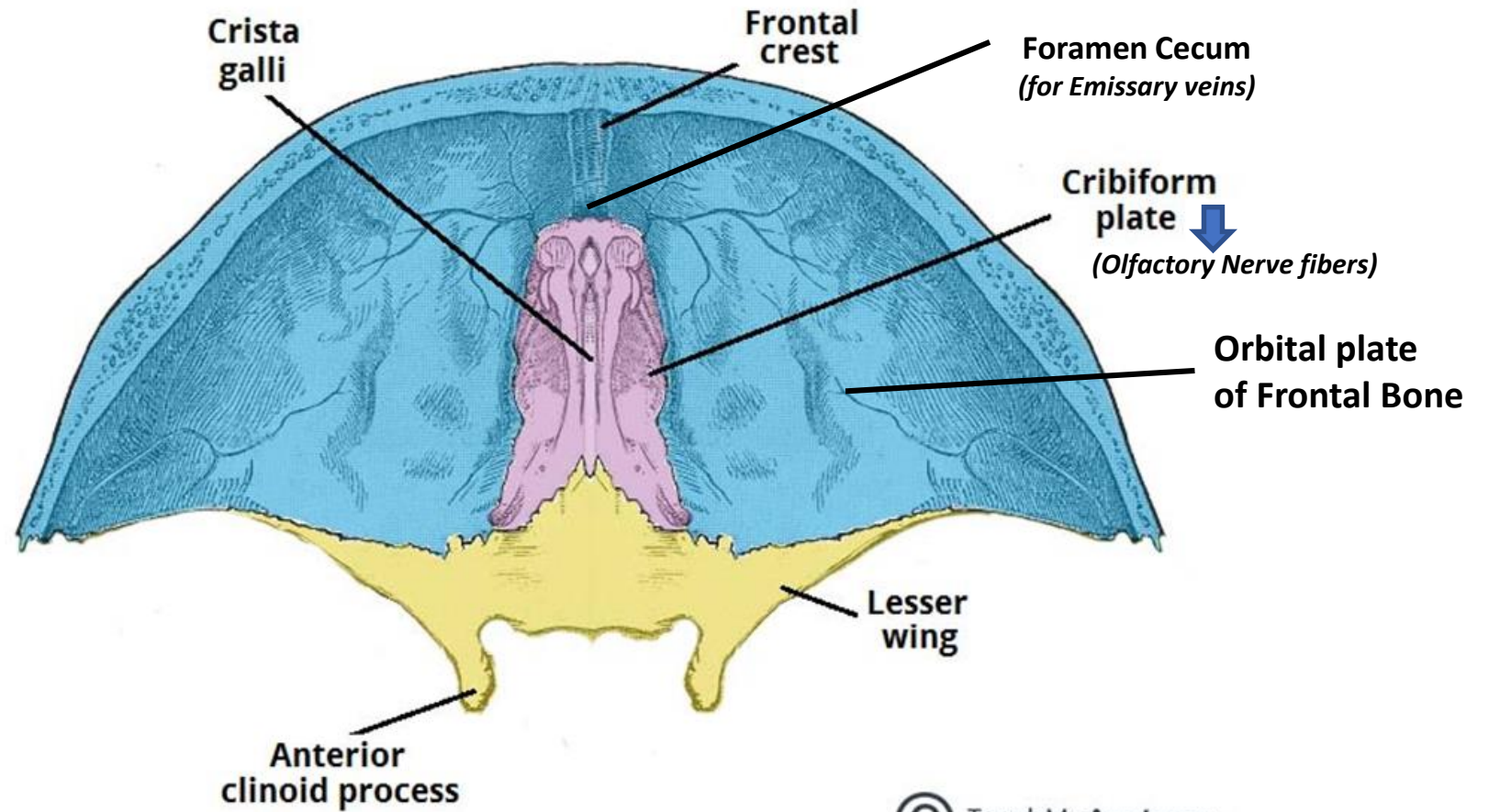


ANTERIOR CRANIAL FOSSA



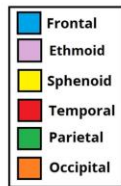
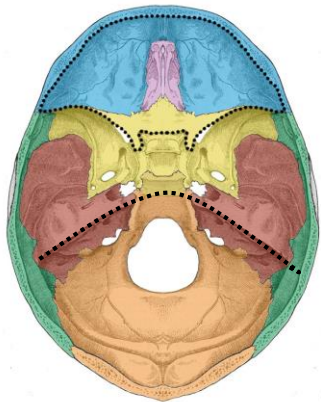
- Frontal
- Ethmoid
- Sphenoid
- Temporal
- Parietal
- Occipital

© TeachMeAnatomy



© TeachMeAnatomy

MIDDLE CRANIAL FOSSA



© TeachMeAnatomy

N.B.: Sella Turcica = Tuberculum Sellae + Dorsum Sellae + Hypophyseal fossa

STRUCTURES PASSING THROUGH

OPTIC CANAL: Optic nerve in its meningeal sheath, ophthalmic artery

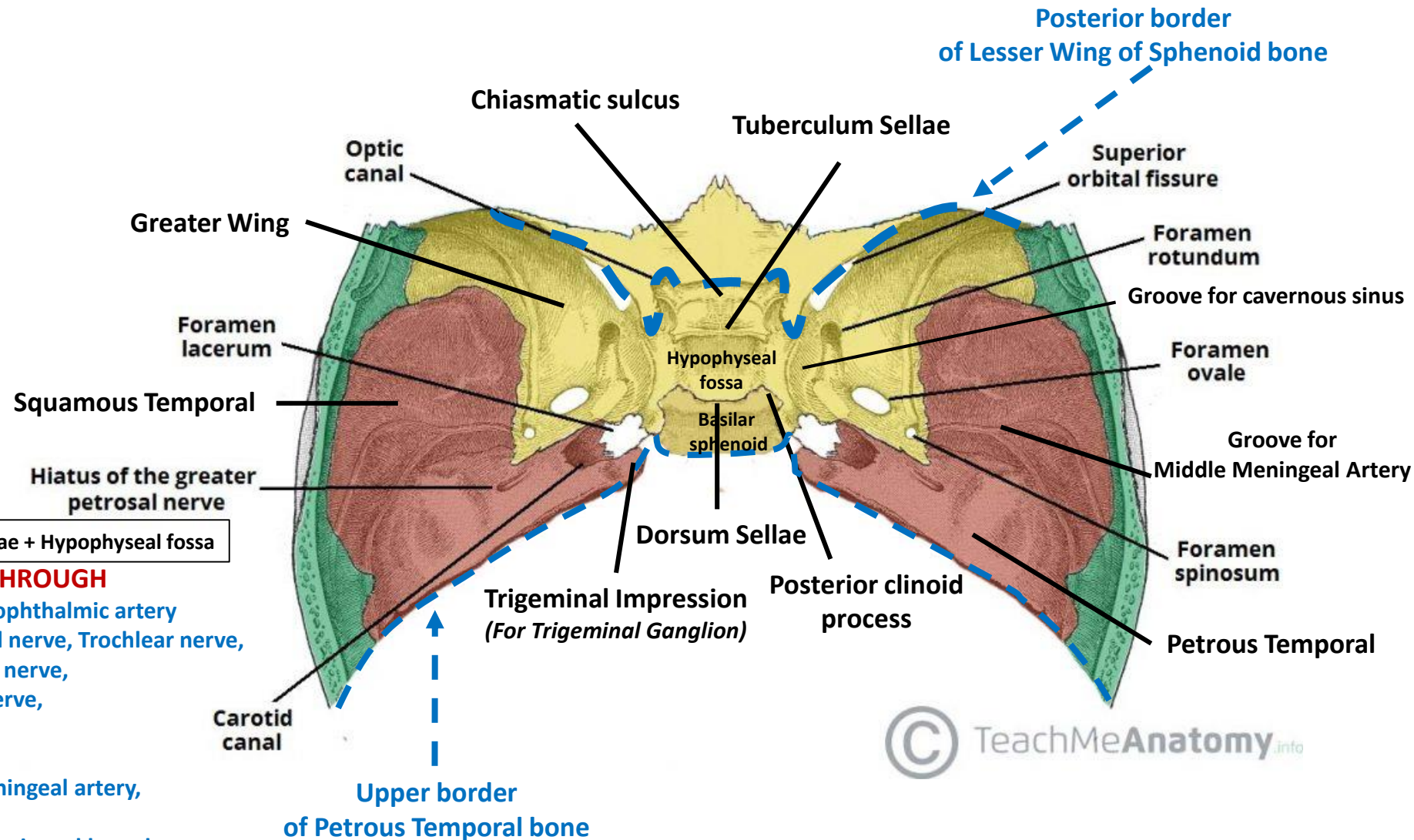
SUPERIOR ORBITAL FISSURE: Lacrimal nerve, Frontal nerve, Trochlear nerve, Superior division of Oculomotor nerve, Nasociliary nerve, inferior division of Oculomotor nerve, Abducent nerve, Ophthalmic veins

FORAMEN ROTUNDUM: Maxillary nerve

FORAMEN OVALE: Mandibular nerve, accessory meningeal artery, Lesser Petrosal nerve, Emissary veins

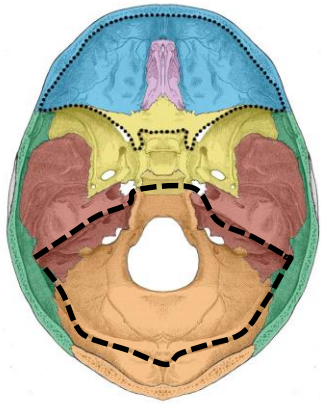
FORAMEN SPINOSUM: Middle Meningeal artery, Meningeal branch of Mandibular nerve

FORAMEN LACERUM: Meningeal branch of Ascending Pharyngeal artery, Emissary veins



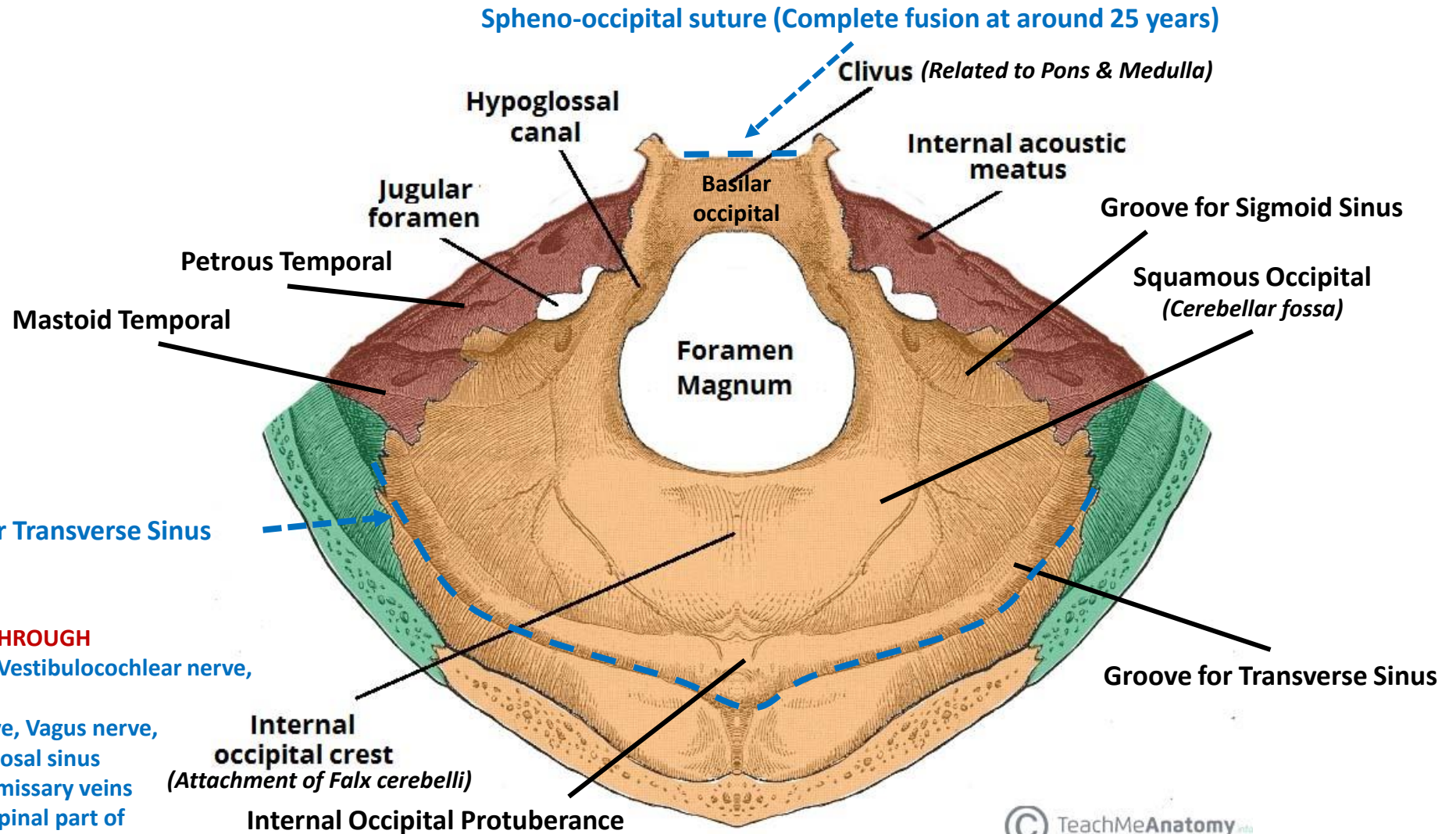
© TeachMeAnatomy.info

POSTERIOR CRANIAL FOSSA



- Frontal
- Ethmoid
- Sphenoid
- Temporal
- Parietal
- Occipital

© TeachMeAnatomy



STRUCTURES PASSING THROUGH

INTERNAL ACOUSTIC MEATUS: Facial nerve, Vestibulocochlear nerve, Internal Acoustic artery

JUGULAR FORAMEN: Glossopharyngeal nerve, Vagus nerve, Accessory nerve, Sigmoid sinus, Inferior Petrosal sinus

HYPOGLOSSAL CANAL: Hypoglossal nerve, Emissary veins

FORAMEN MAGNUM: Medulla Oblongata, Spinal part of Accessory nerve, meninges, Vertebral arteries, Anterior & Posterior Spinal Arteries, Alar ligaments, tectorial membranes

© TeachMeAnatomy

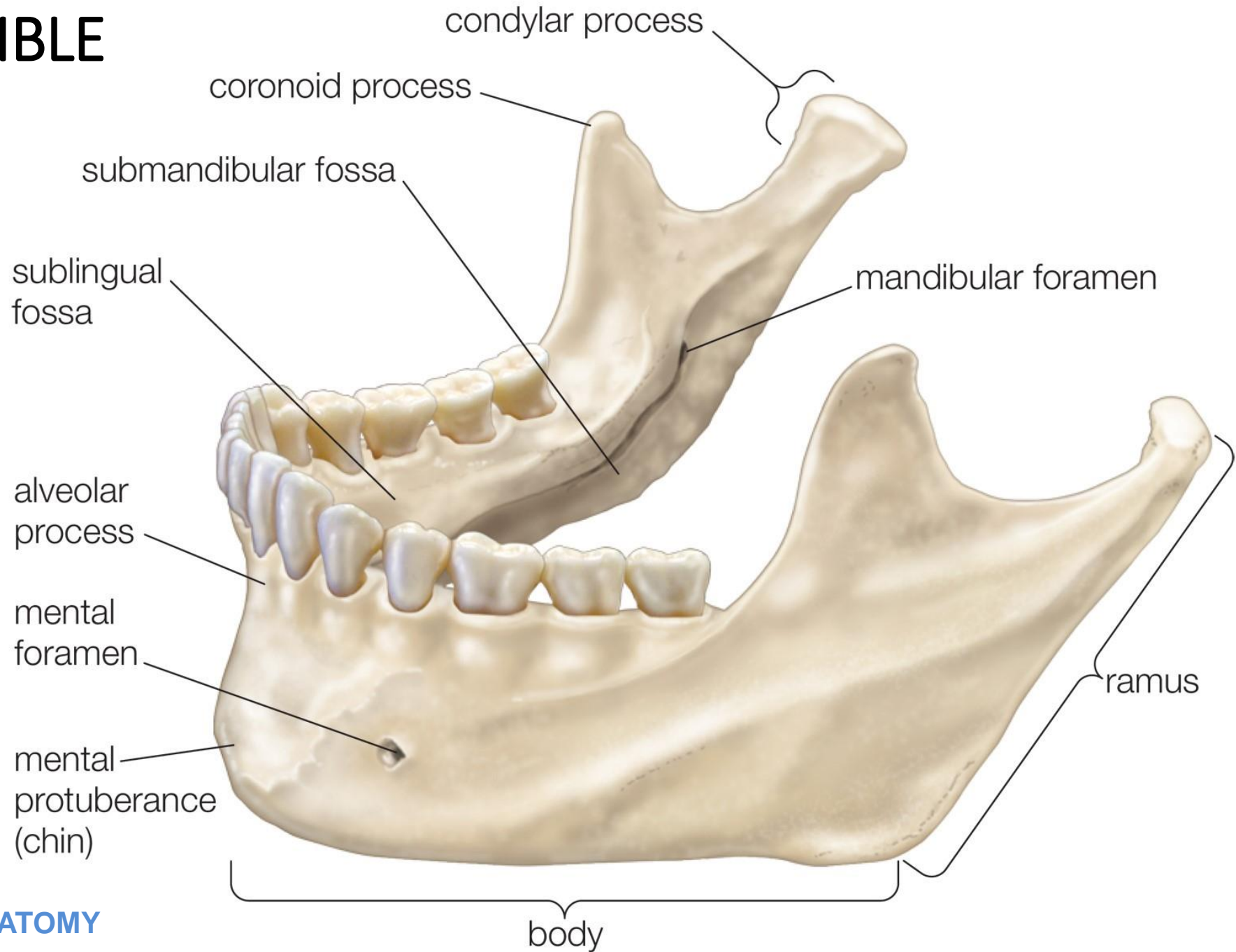
© 2020 KSU ANATOMY

NORMA BASALIS





MANDIBLE



Disclosure

Please be advised that this work is intended for non-profit purely educational purposes. We used some images from the internet and other sources. We did our best to link all images to their original sources to preserve copyrights. If you are the owner of one of those images, and you are not satisfied with our copyright level, please contact us and let us know how to make things right. We deeply appreciate your cooperation and consideration.

Contact: **anatomy@ksu.edu.sa**