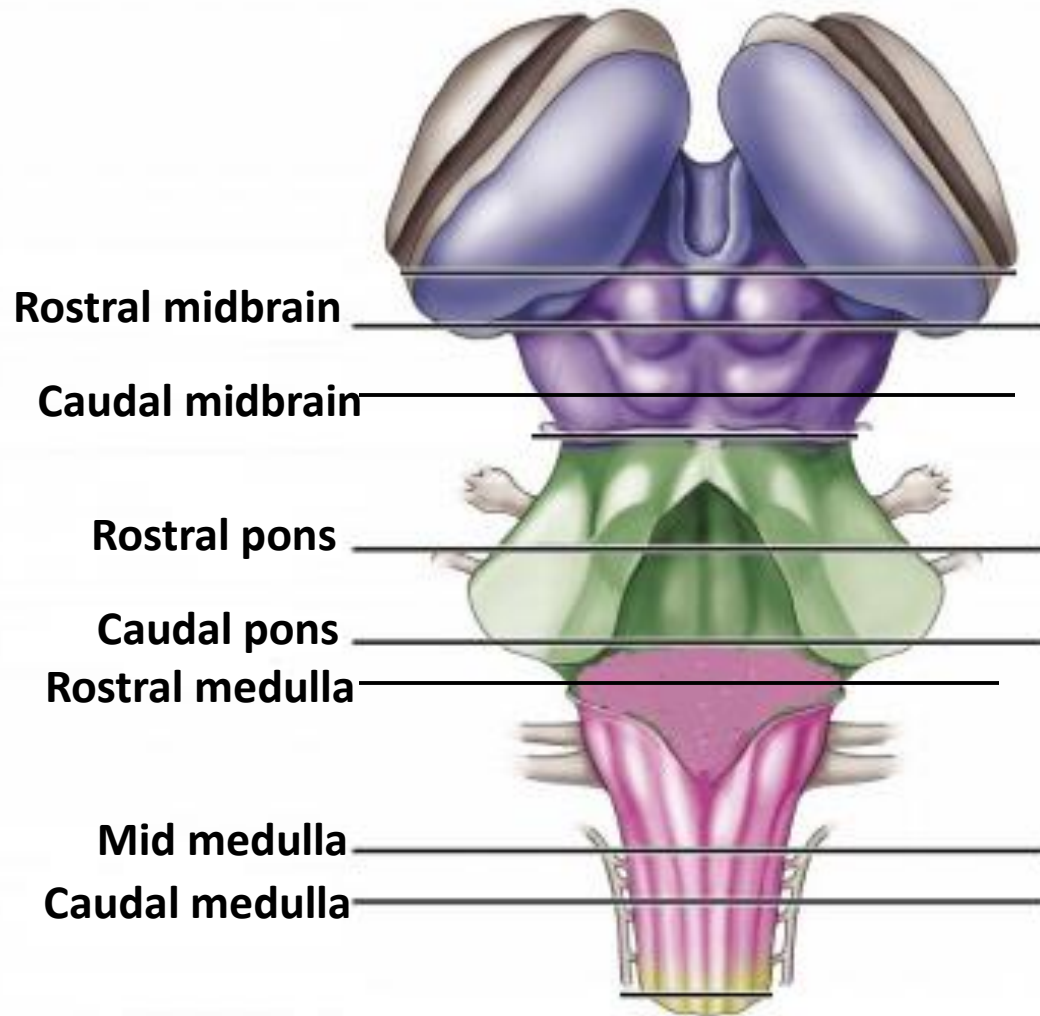
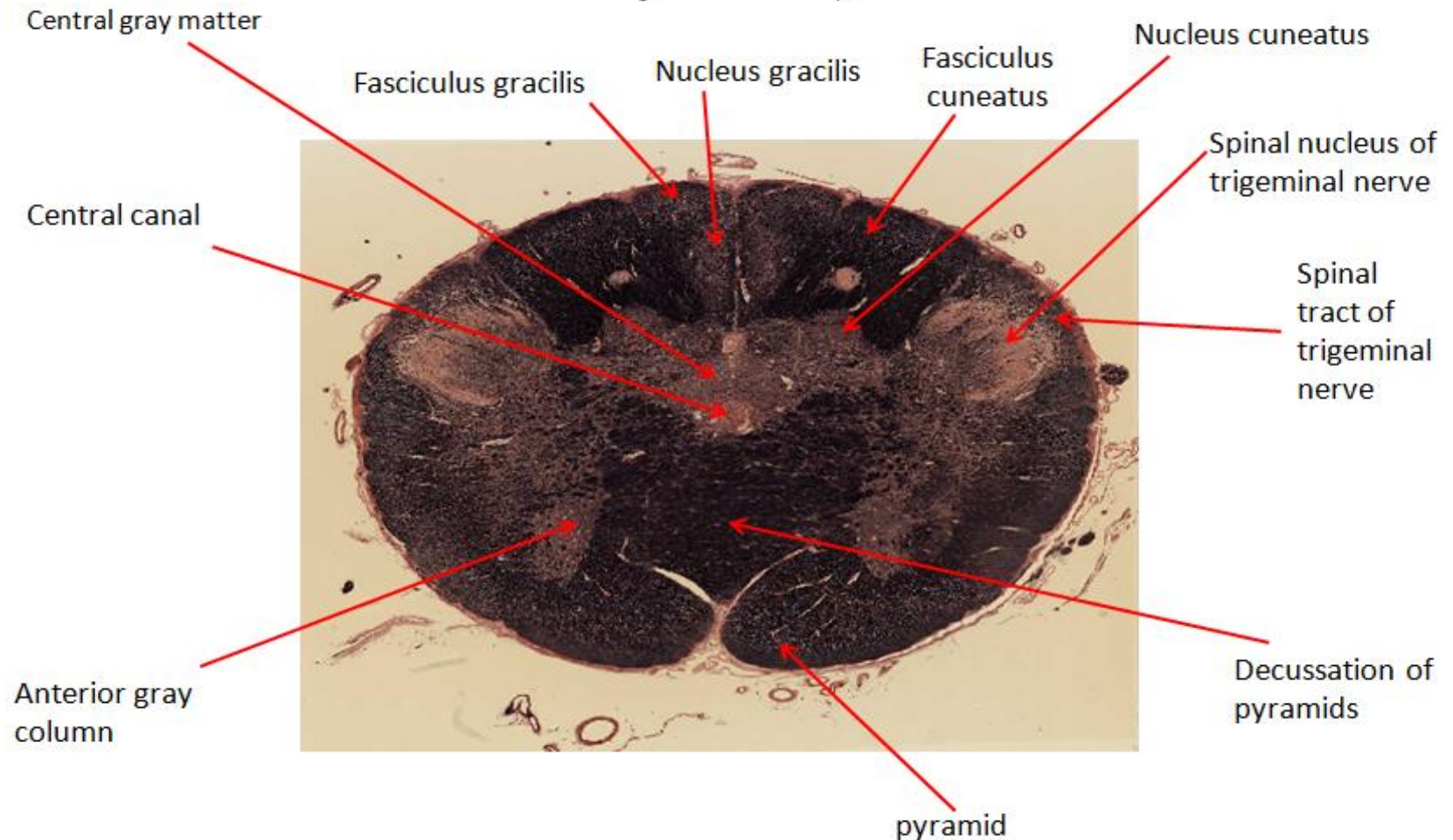


Brainstem Slides

Prepared by:
Dr. Sahar Shareef



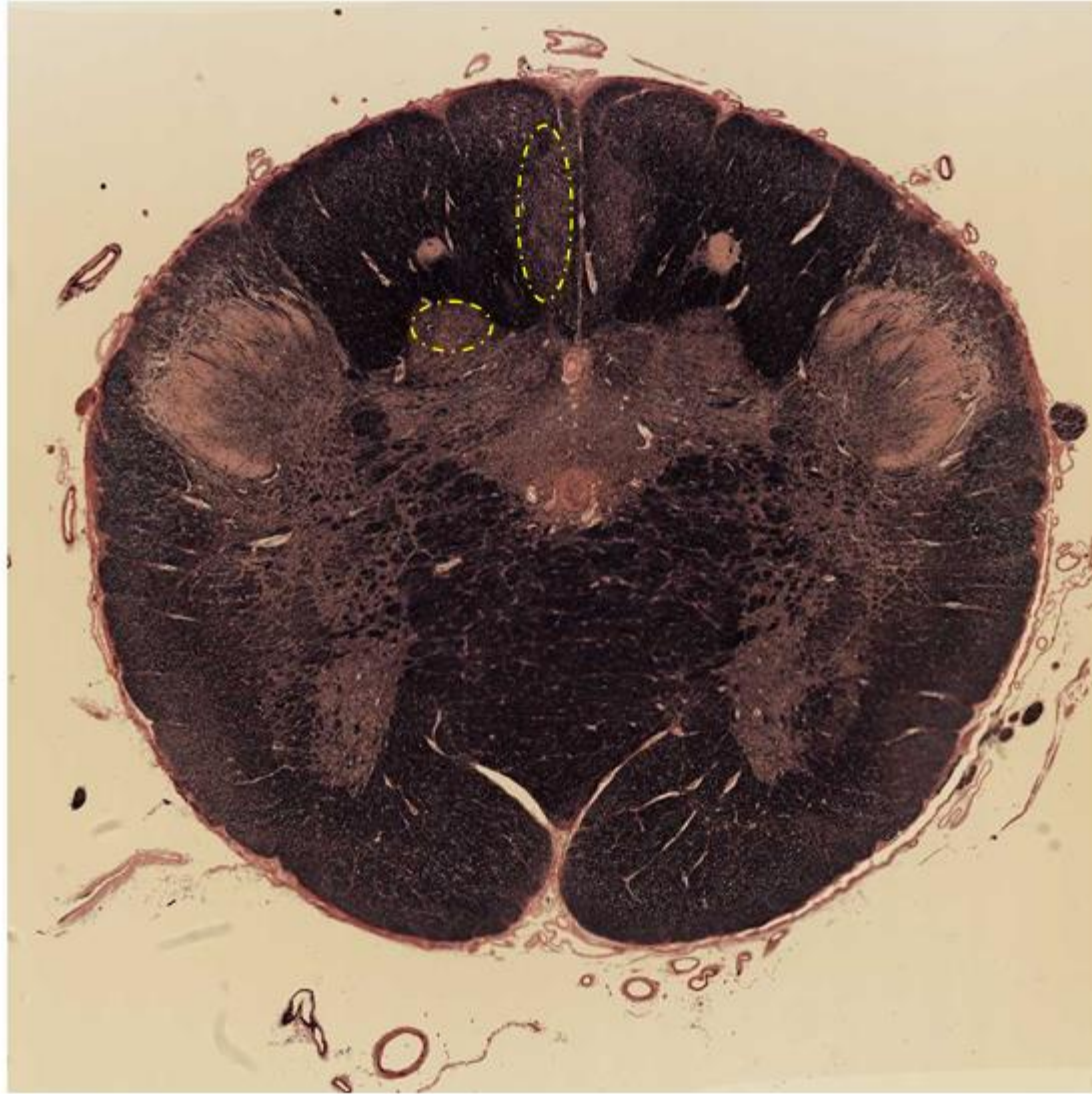
Caudal Medulla Oblongata (Level of Decussation of Pyramids)



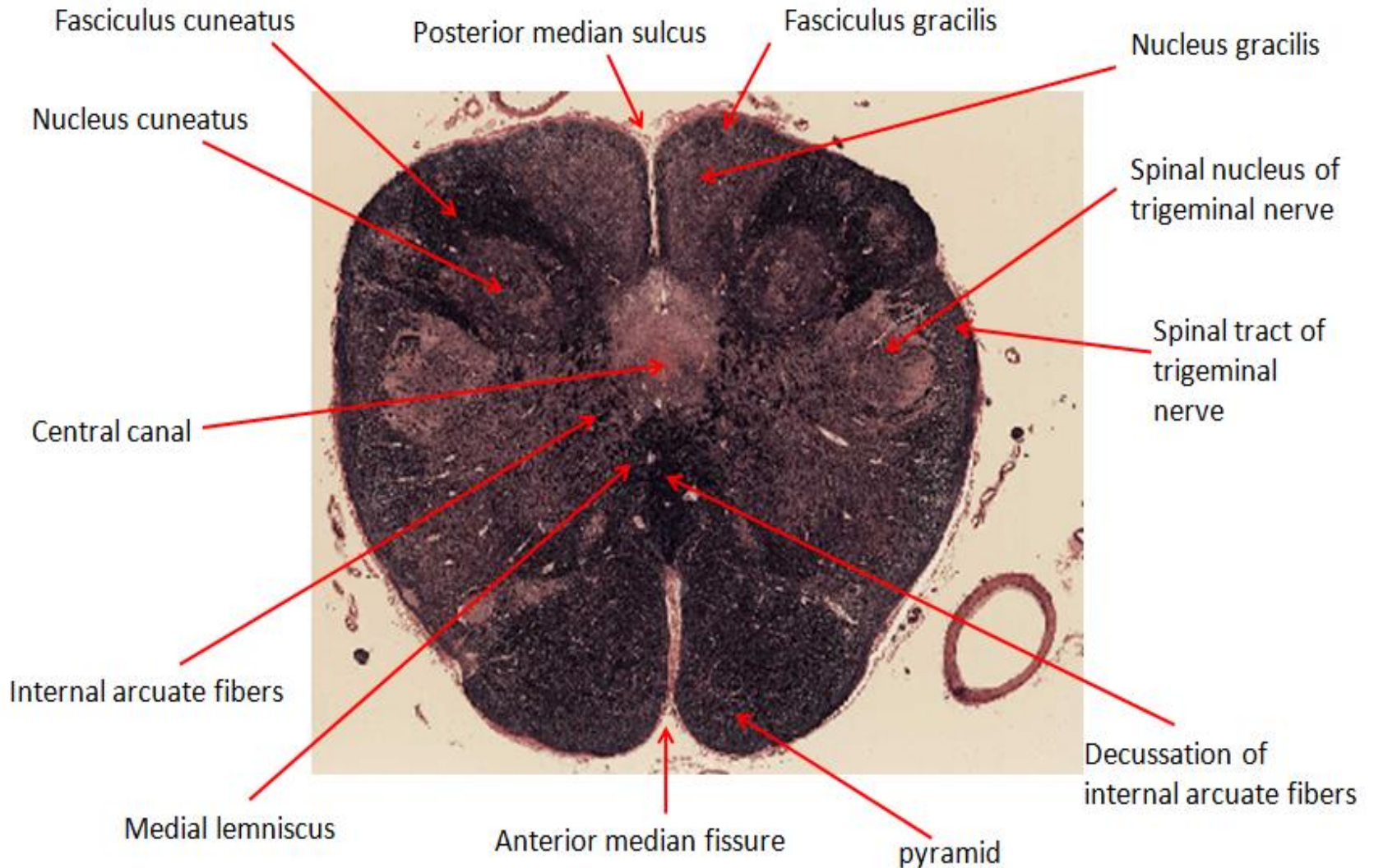
N.B.:

Nuclei are lighter in color & tracts are darker.

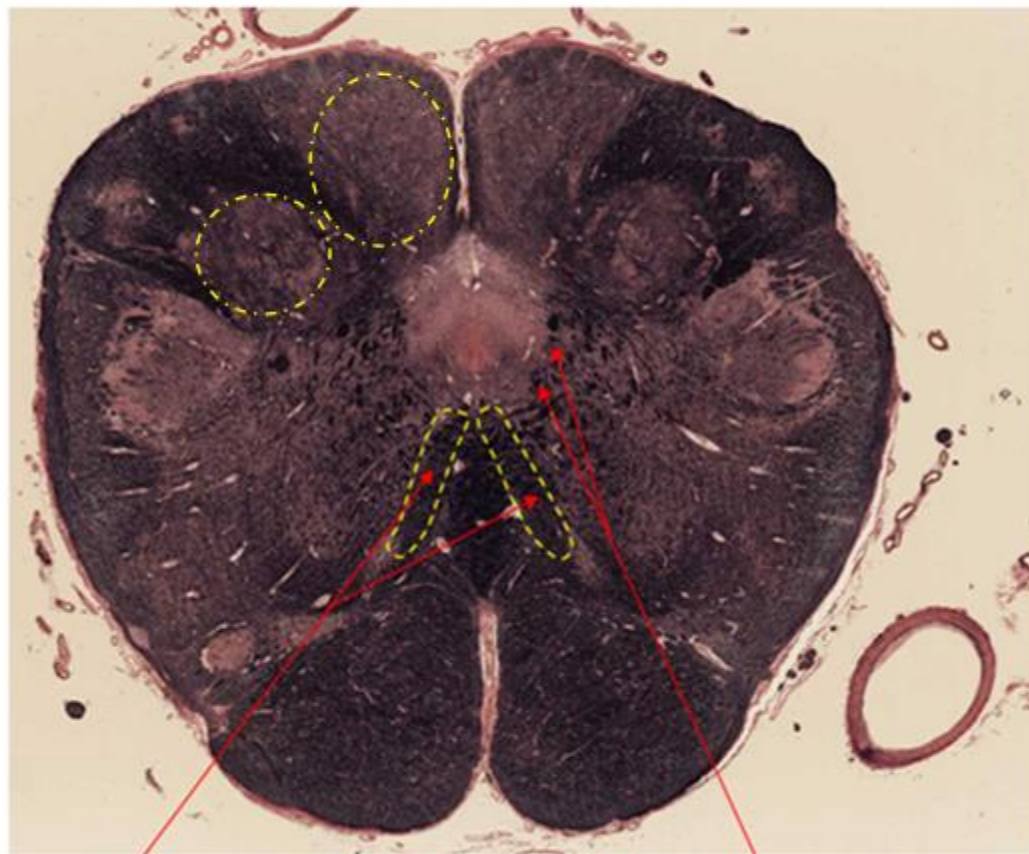
Caudal Medulla Oblongata (Level of Decussation of Pyramids)



Mid Medulla Oblongata (Level of Sensory Decussation)



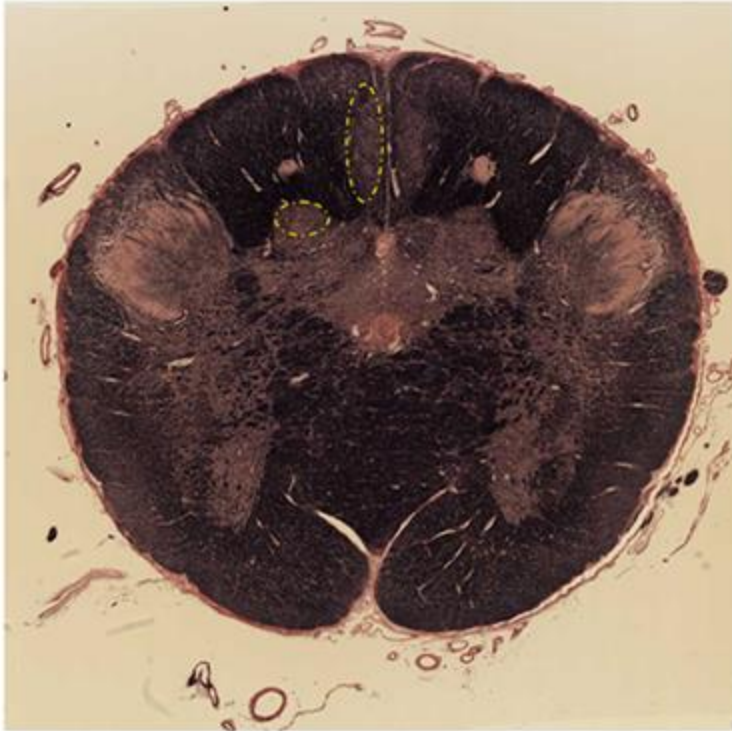
Mid Medulla (Level of sensory decussation)



Medial Lemniscus

Internal arcuate fibers

Caudal Medulla



Mid Medulla



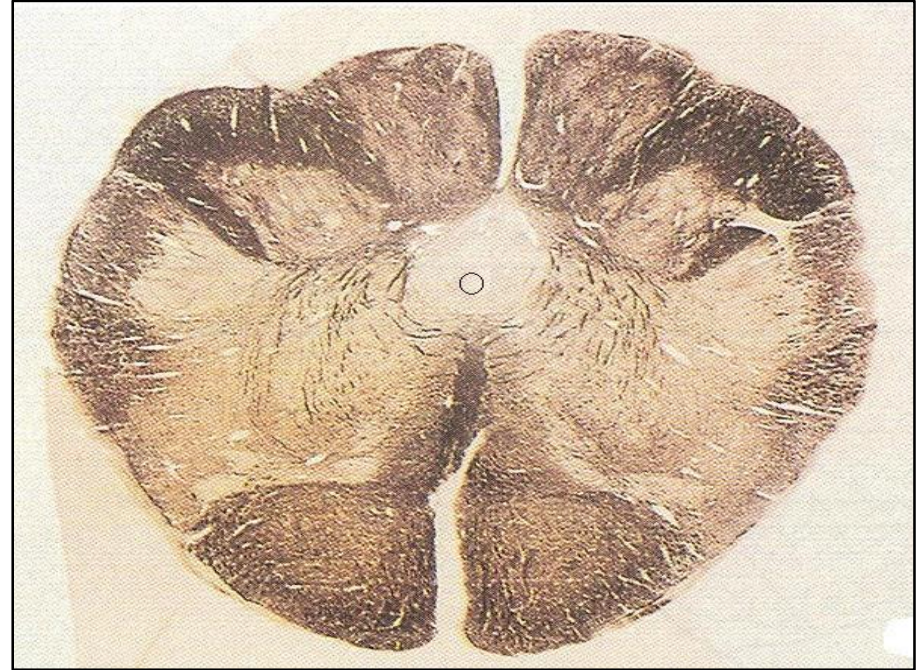
In caudal Medulla: Pyramidal decussation occupying a large area posterior to the pyramids, as compared to sensory decussation in mid level.

In mid Medulla: Gracile & cuneate nuclei are larger in size.

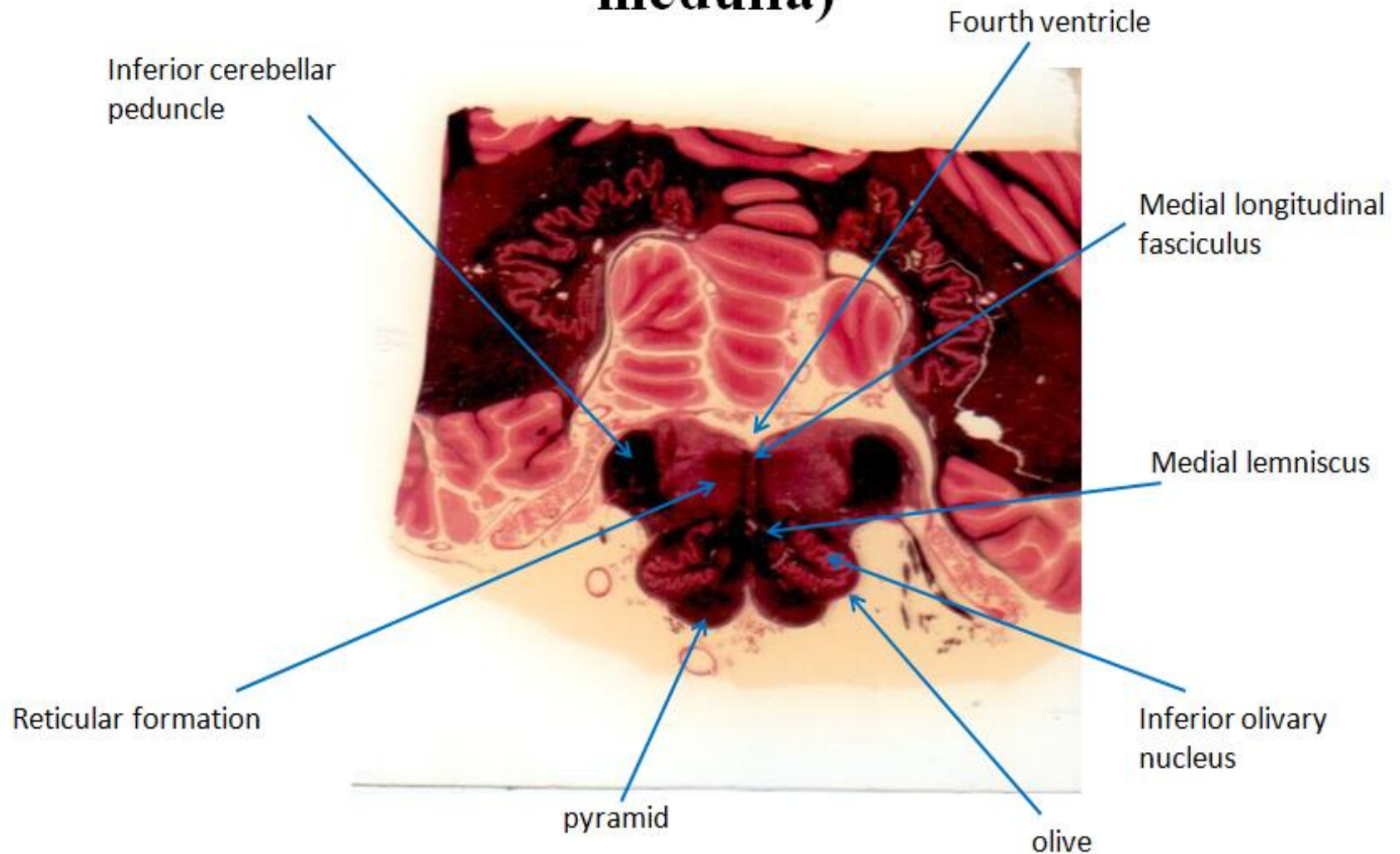
Caudal Medulla



Mid Medulla



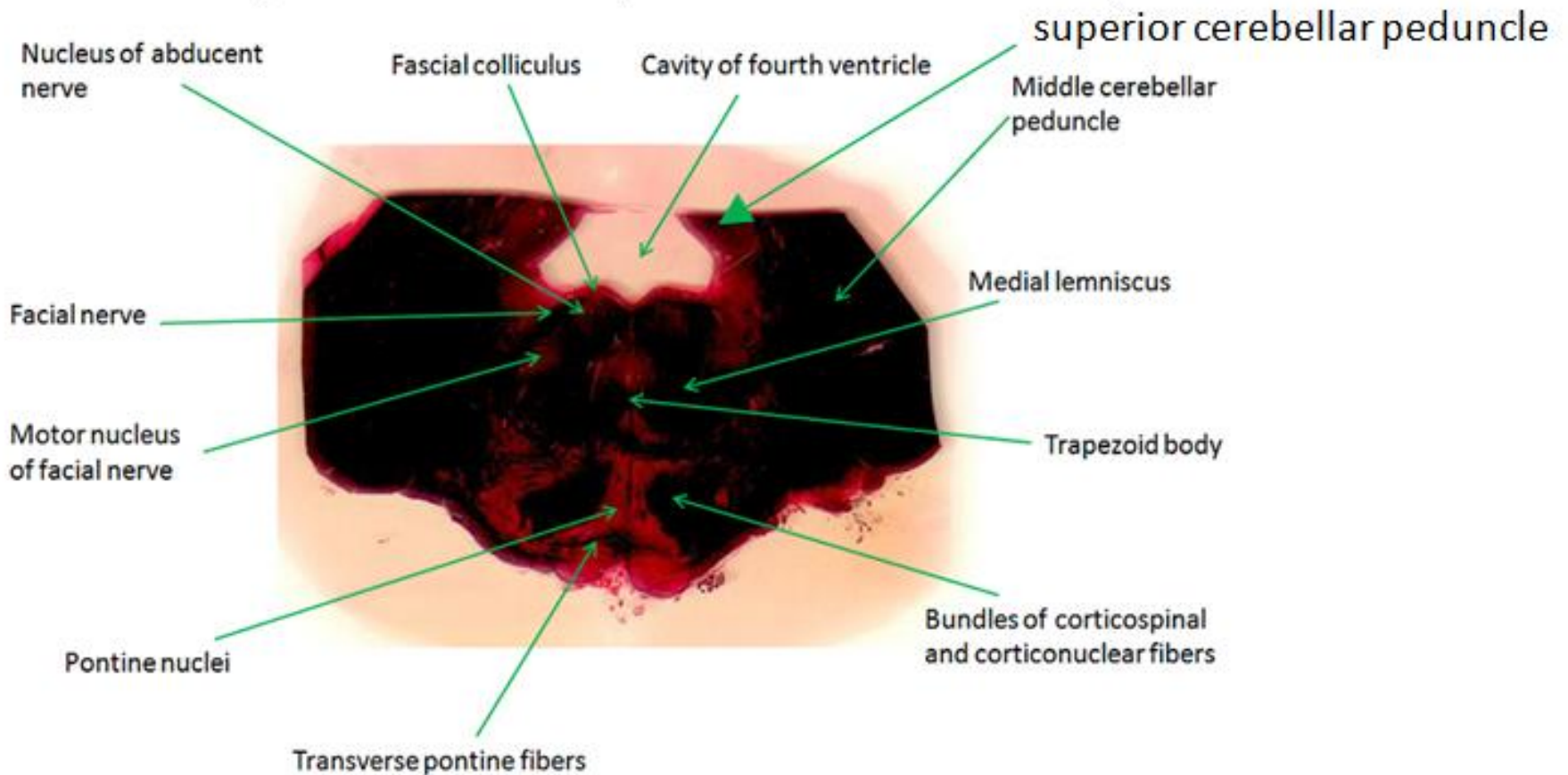
Medulla Oblongata (Level of Olives, or open medulla)



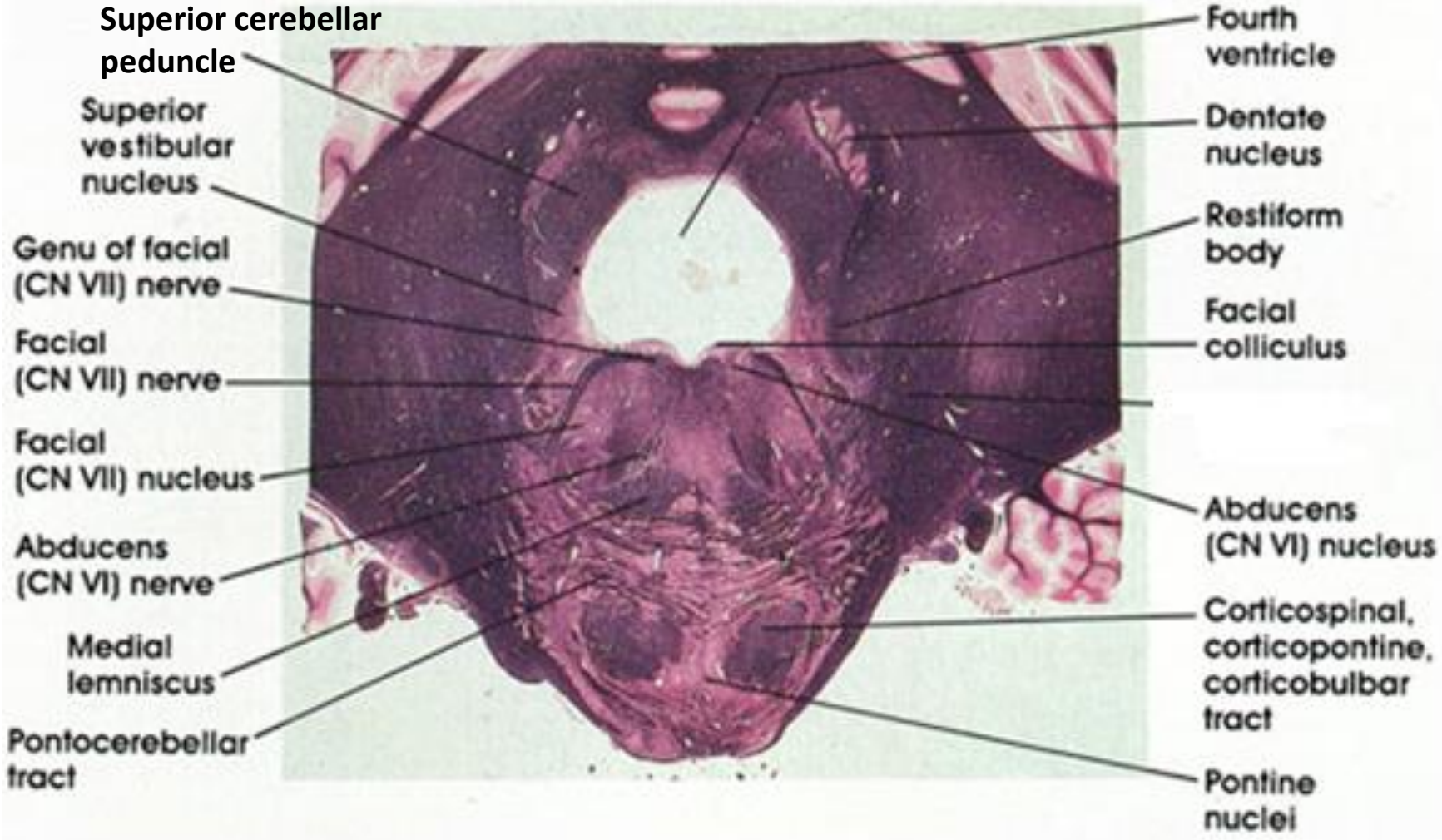
Medulla oblongata (Level of Olives, or Open Medulla)



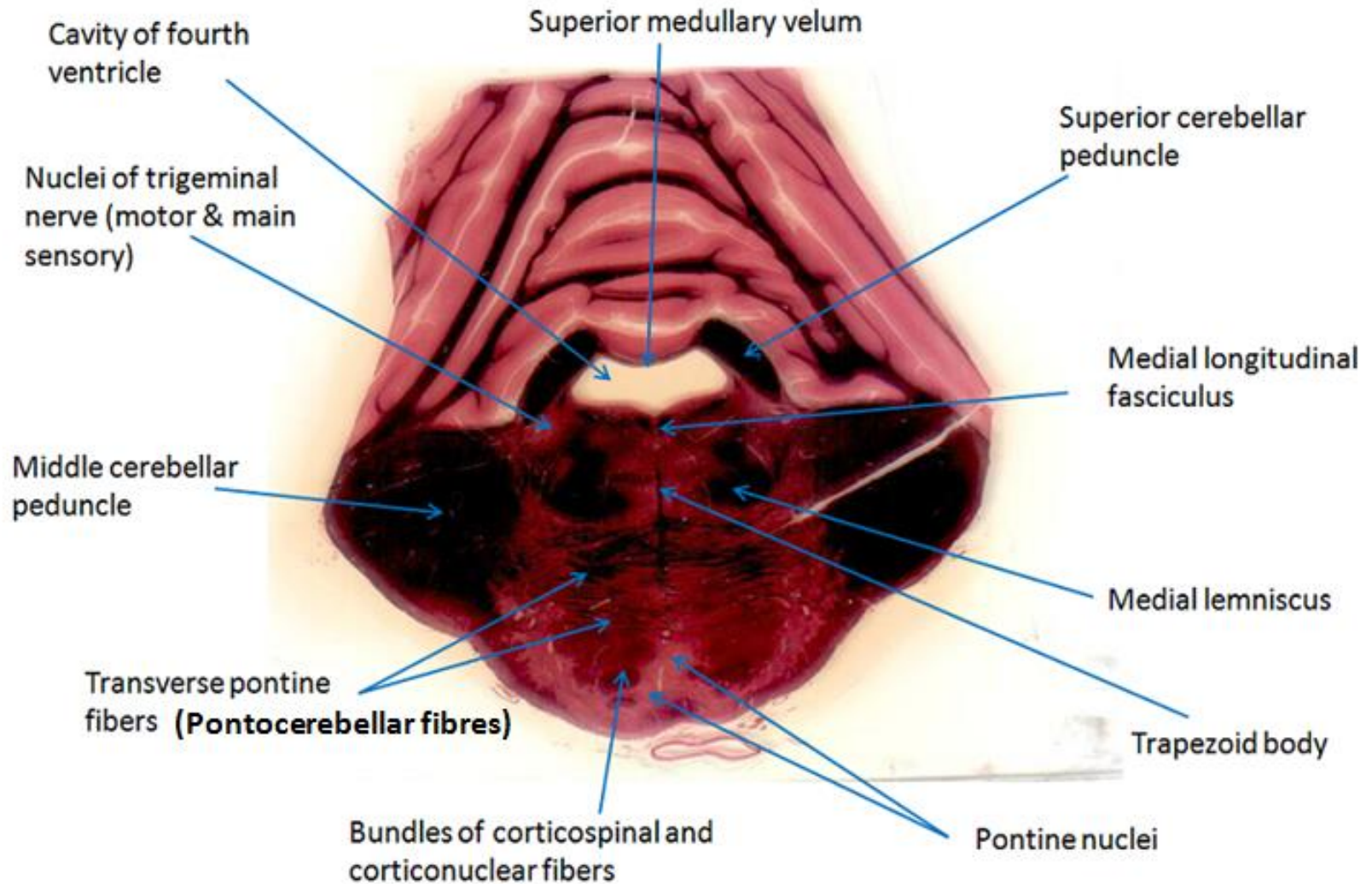
Pons (Caudal Level, of Facial Colliculus)



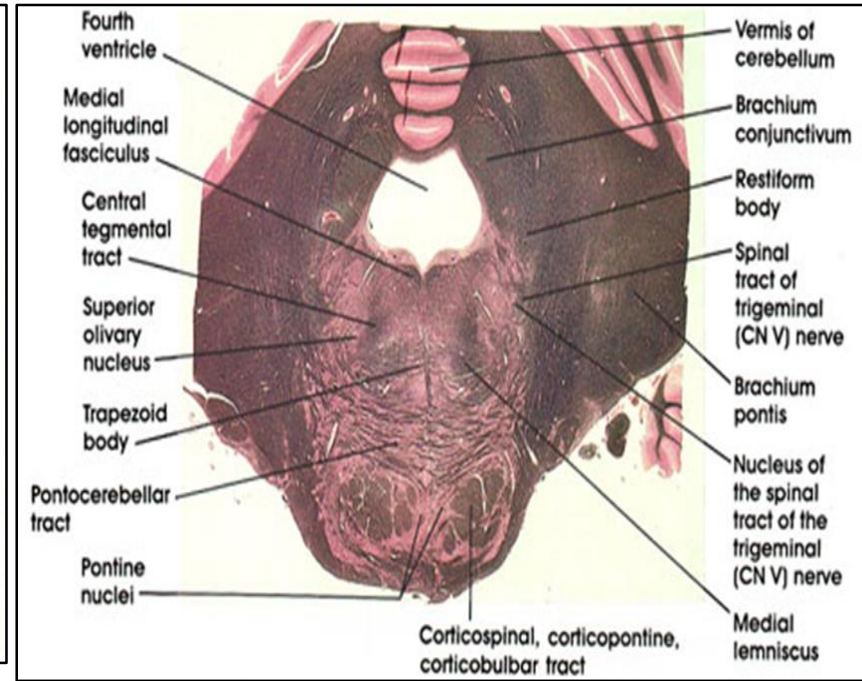
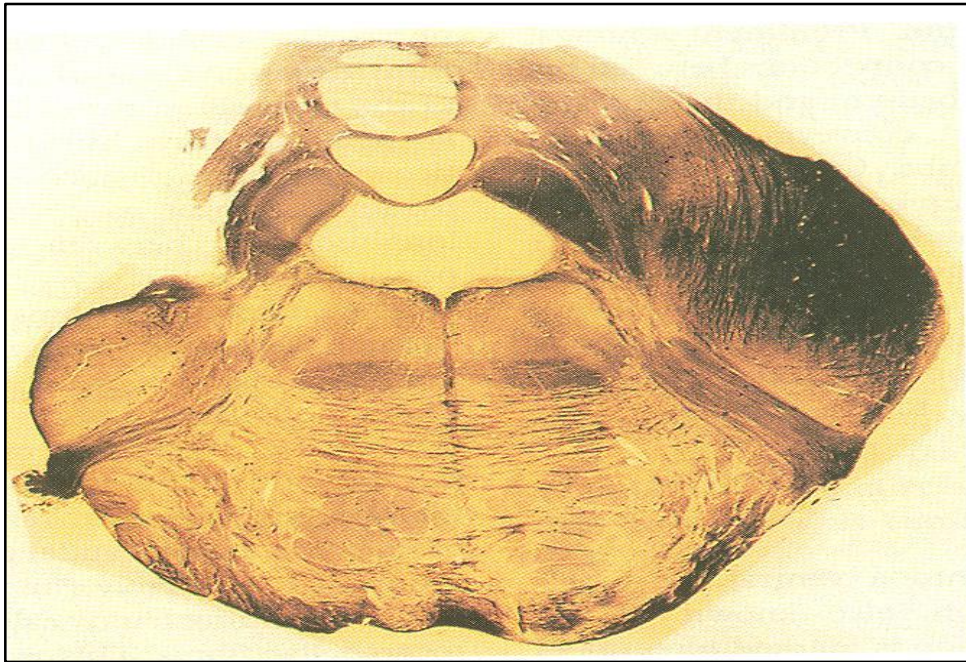
Pons (Caudal Level, of Facial Colliculus)



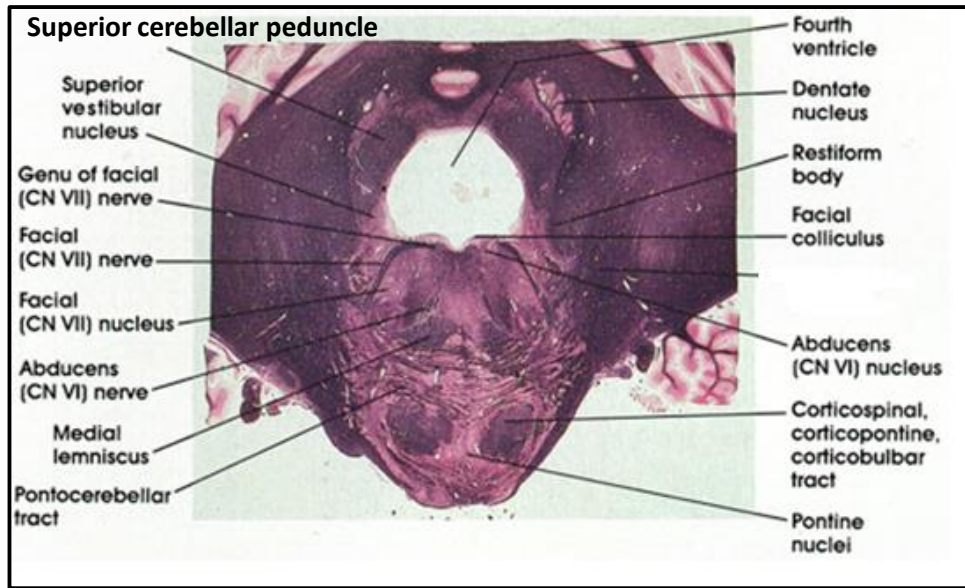
Pons (Rostral Level, of Trigeminal nuclei)



Pons Rostral Level (Level of Trigeminal Nuclei)

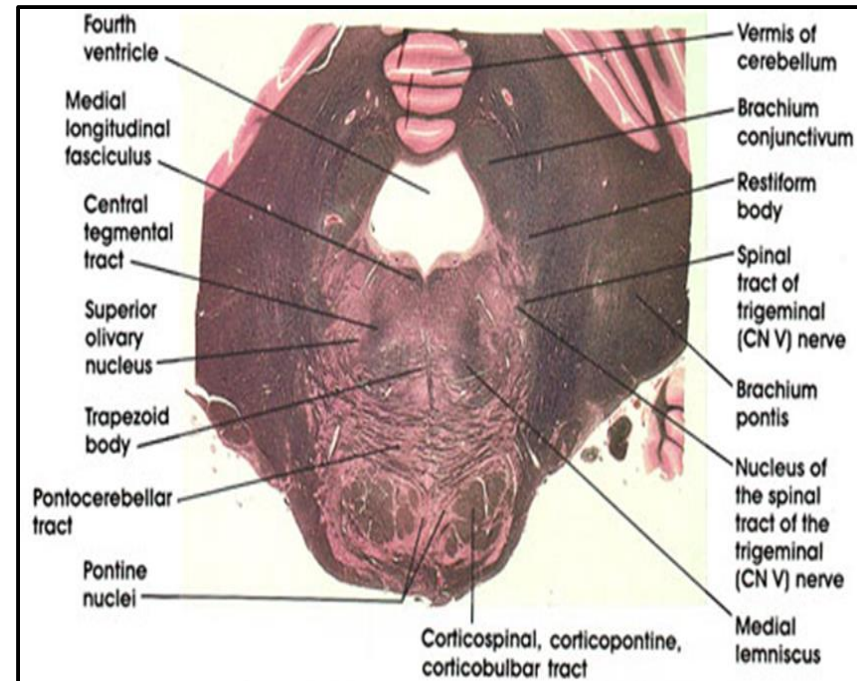


Caudal Pons

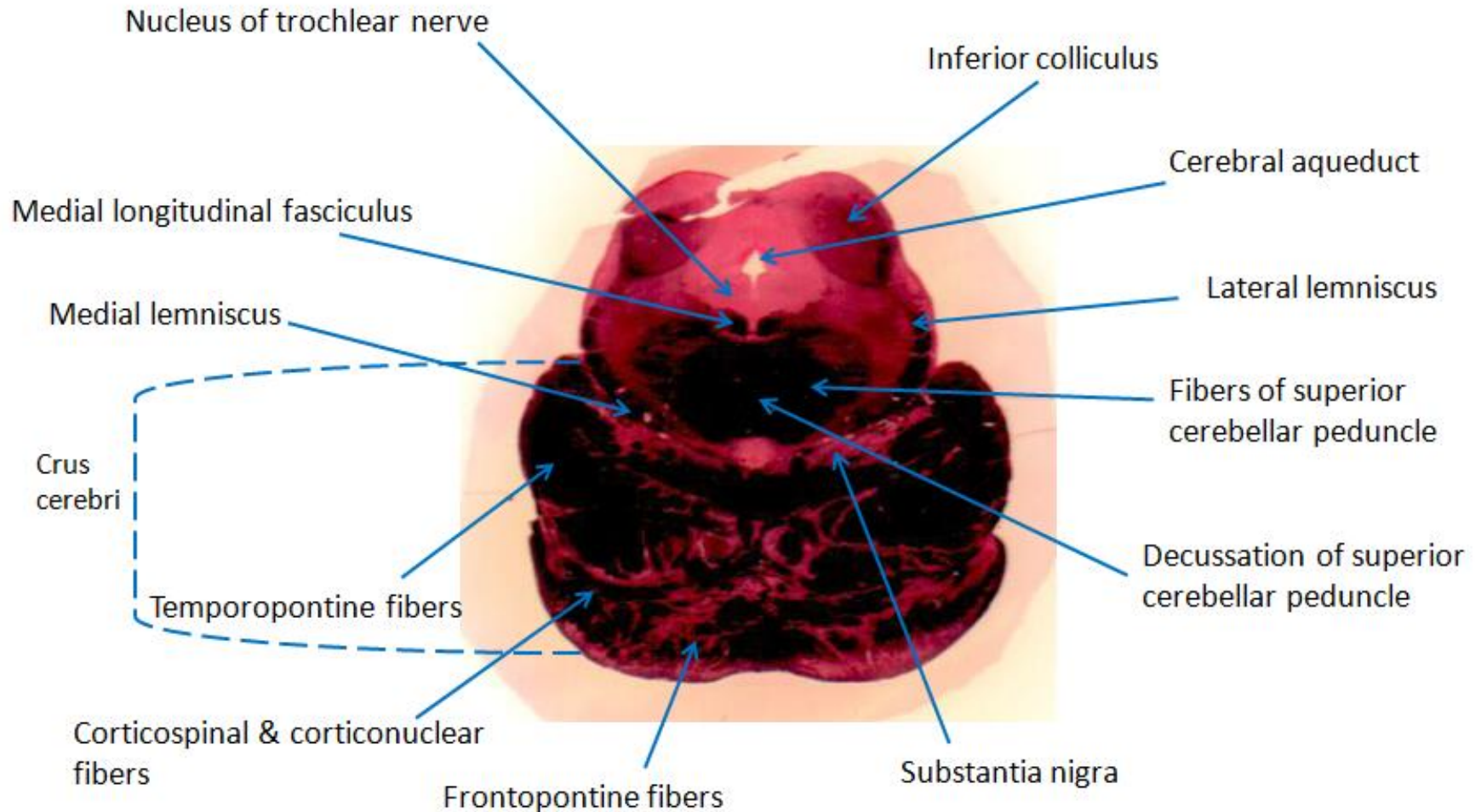


In caudal Pons: Facial nerve is clear, winding around abducent nucleus.

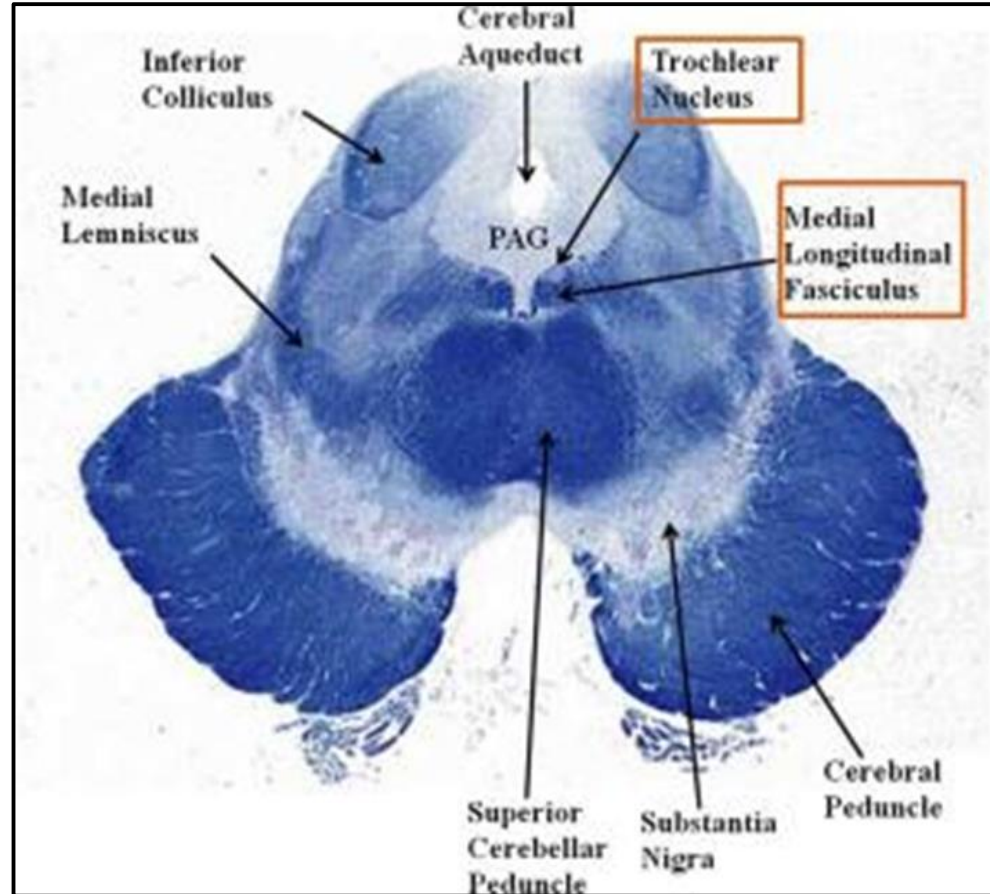
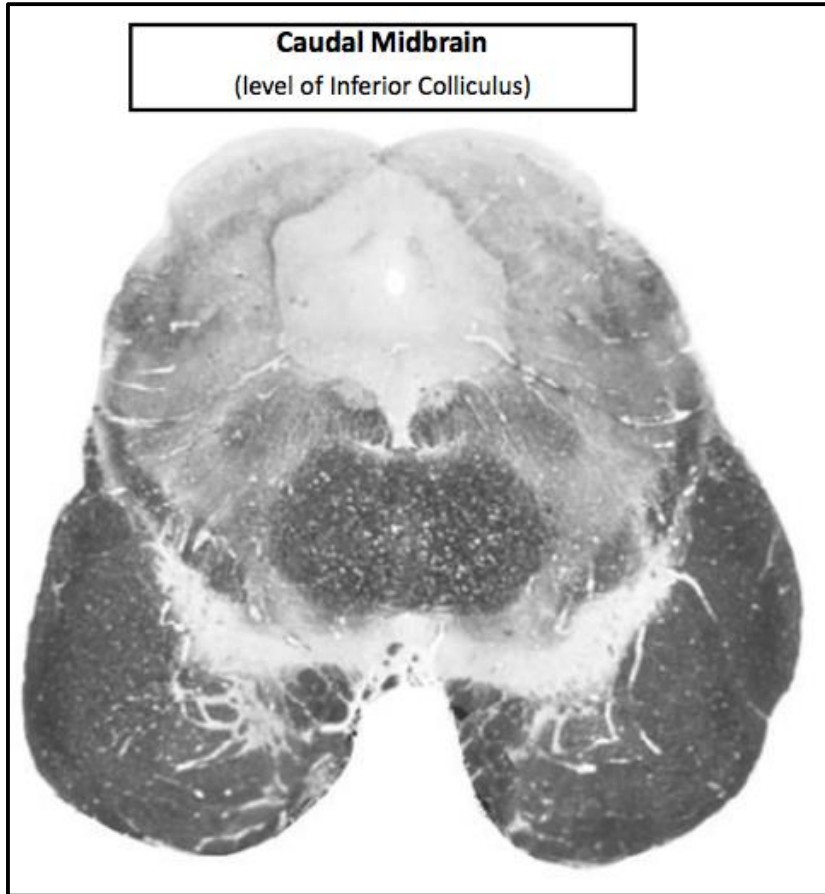
Rostral Pons



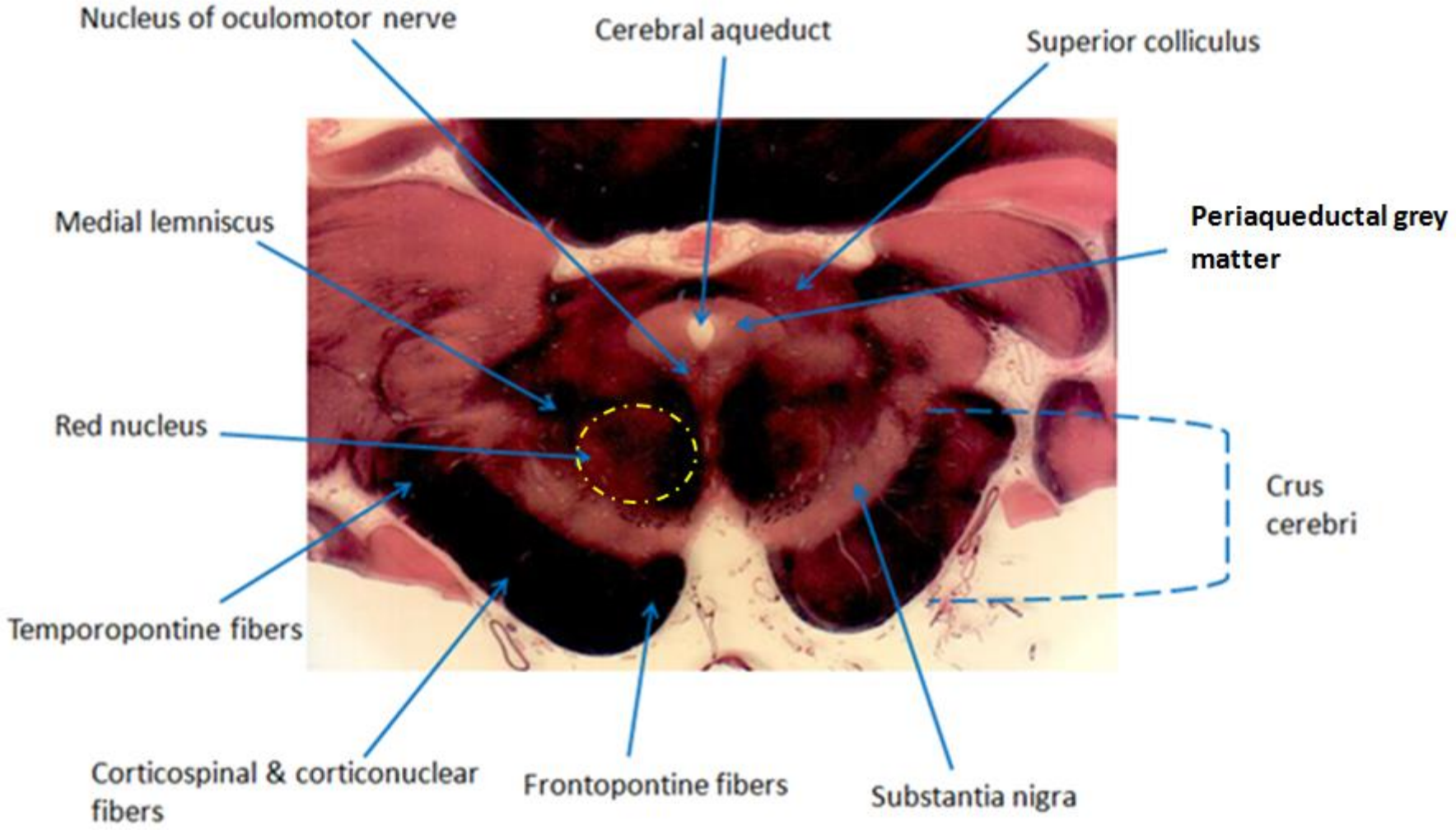
Midbrain (Level of Inferior Colliculus)



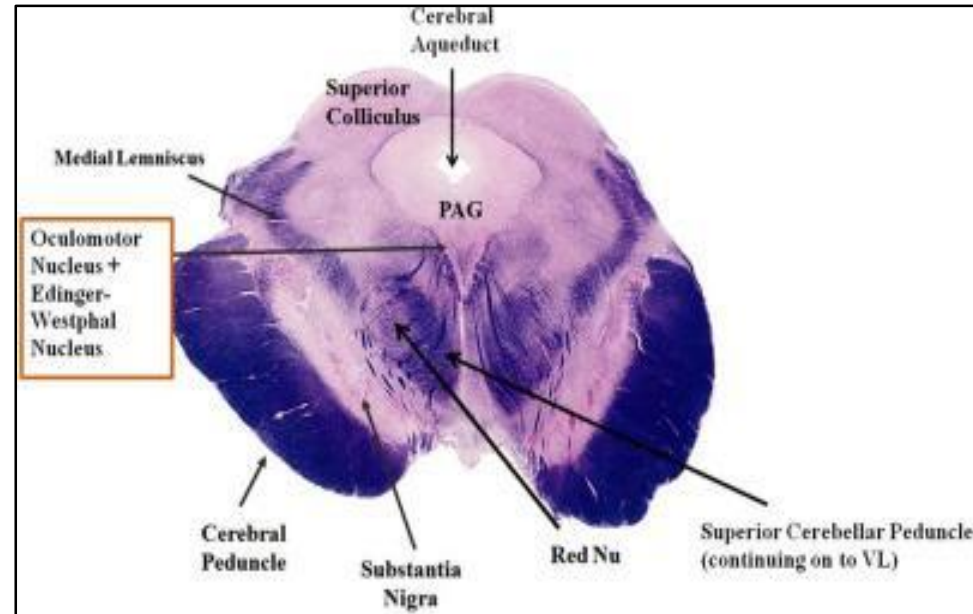
Midbrain (Level of Inferior Colliculus)



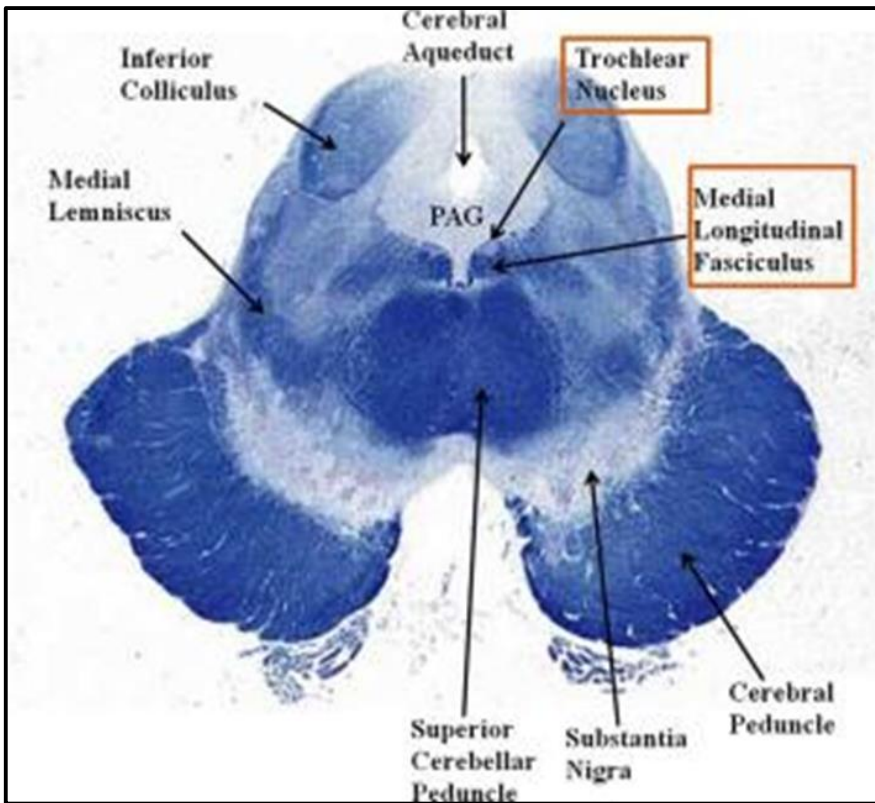
Midbrain (Level of Superior Colliculus)



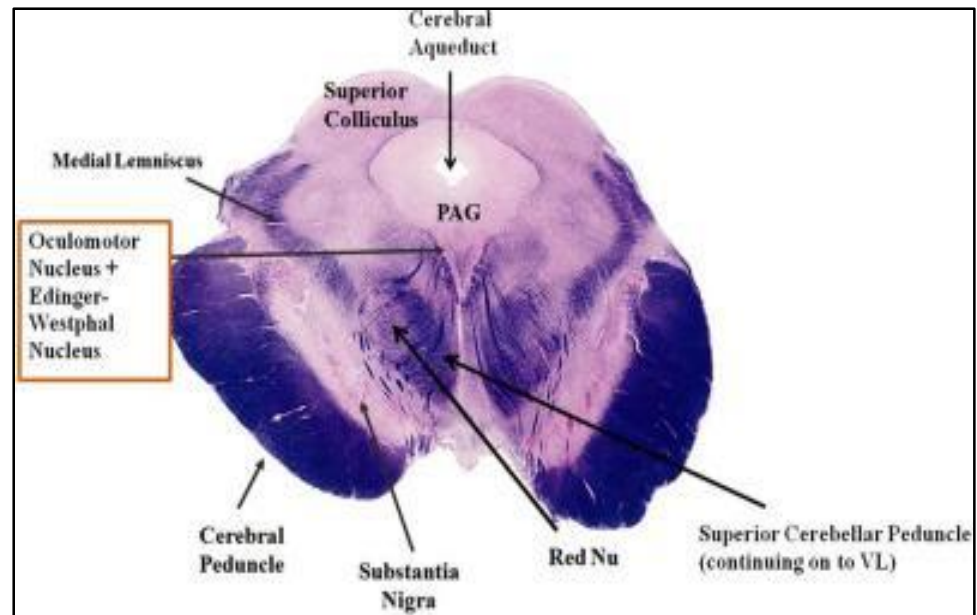
Midbrain (Level of Superior Colliculus)



Caudal midbrain



Rostral midbrain



In caudal level: Efferent fibers from cerebellum travel through superior cerebellar peduncle and cross the mid line in the decussation of superior cerebellar peduncle.

