

A thick black L-shaped frame surrounds the text. The top-left corner is a horizontal bar extending to the right, then a vertical bar extending downwards. The bottom-right corner is a vertical bar extending upwards, then a horizontal bar extending to the left.

RADIOLOGY OF ESOPHAGUS AND STOMACH

Practical Session (1)

Radiology

ESOPHAGUS ANATOMY

What are the modalities can be used in imaging the esophagus?

- A. CT scan
- B. MRI
- C. Fluoroscopy
- D. US
- E. X-ray
- F. Nuclear medicine

What are the modalities can be used in imaging the esophagus?

A. CT scan

B. MRI

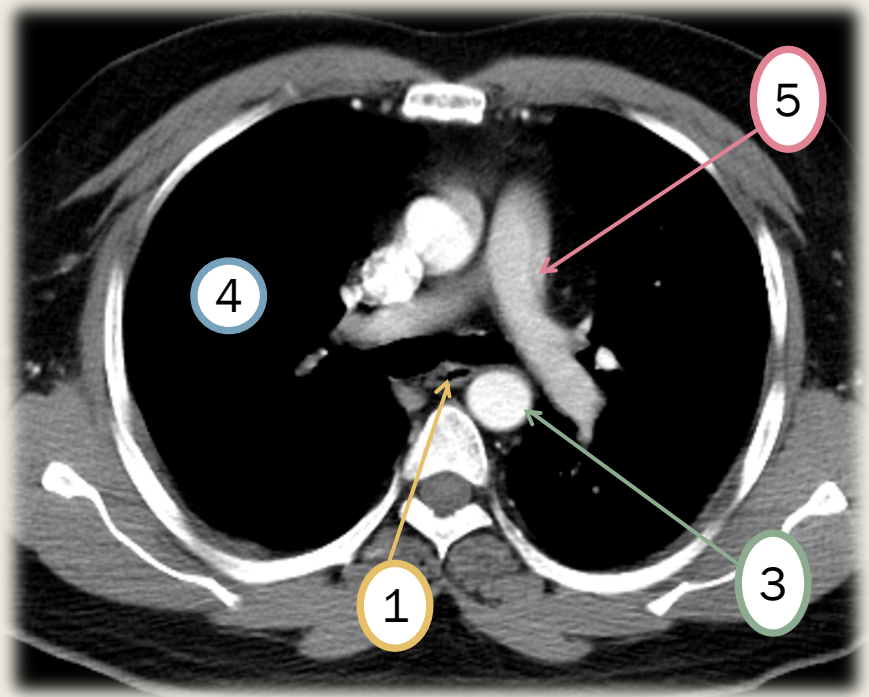
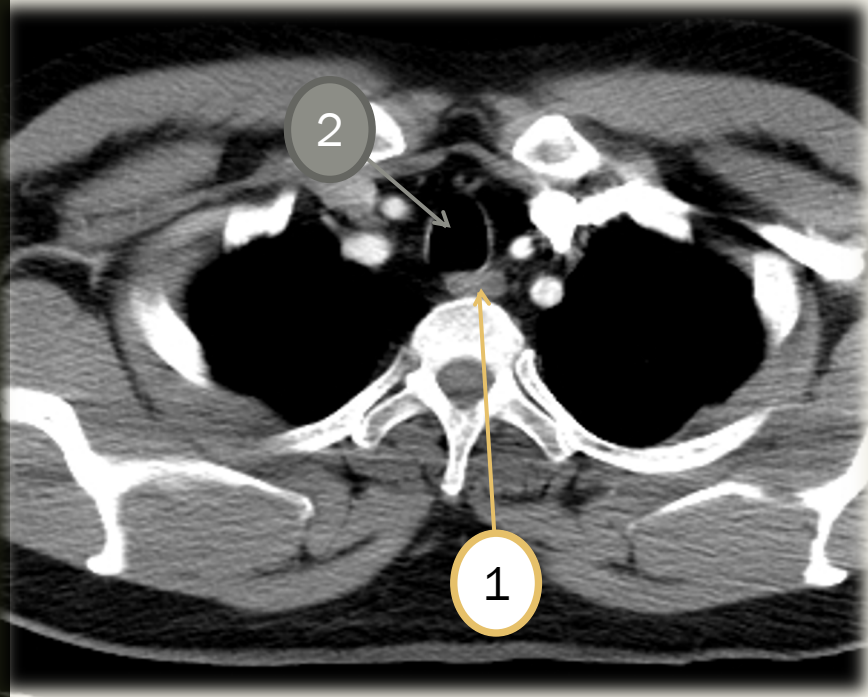
C. Fluoroscopy

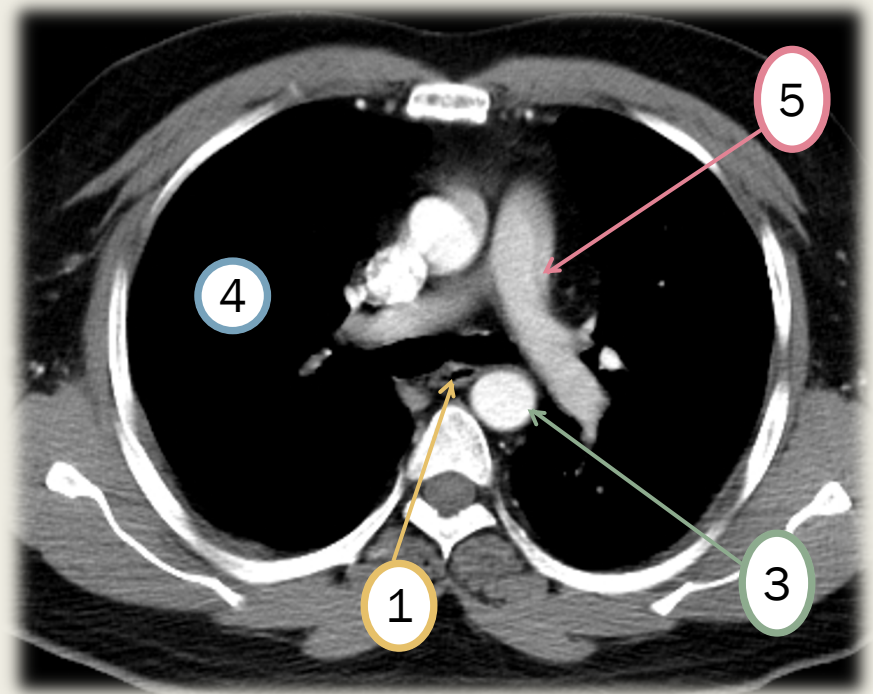
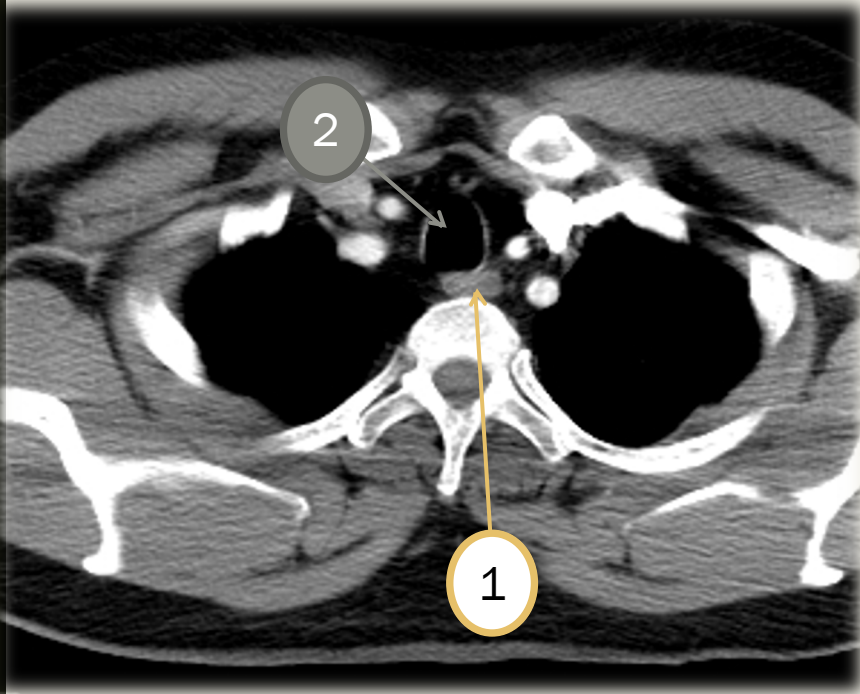
D. US

E. X-ray

F. Nuclear medicine

CT scan





1. Esophagus
2. Trachea
3. Aorta
4. Lung
5. Pulmonary artery

Fluoroscopy

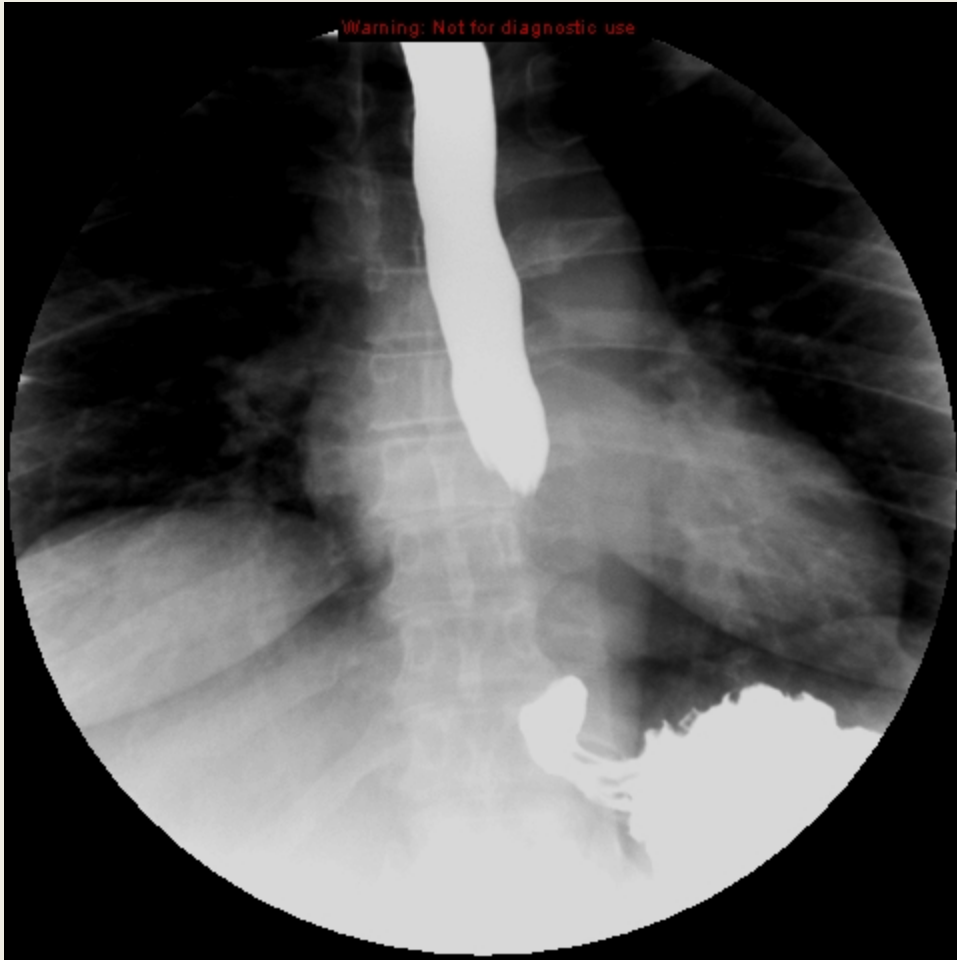
Warning: Not for diagnostic use



Warning: Not for diagnostic use



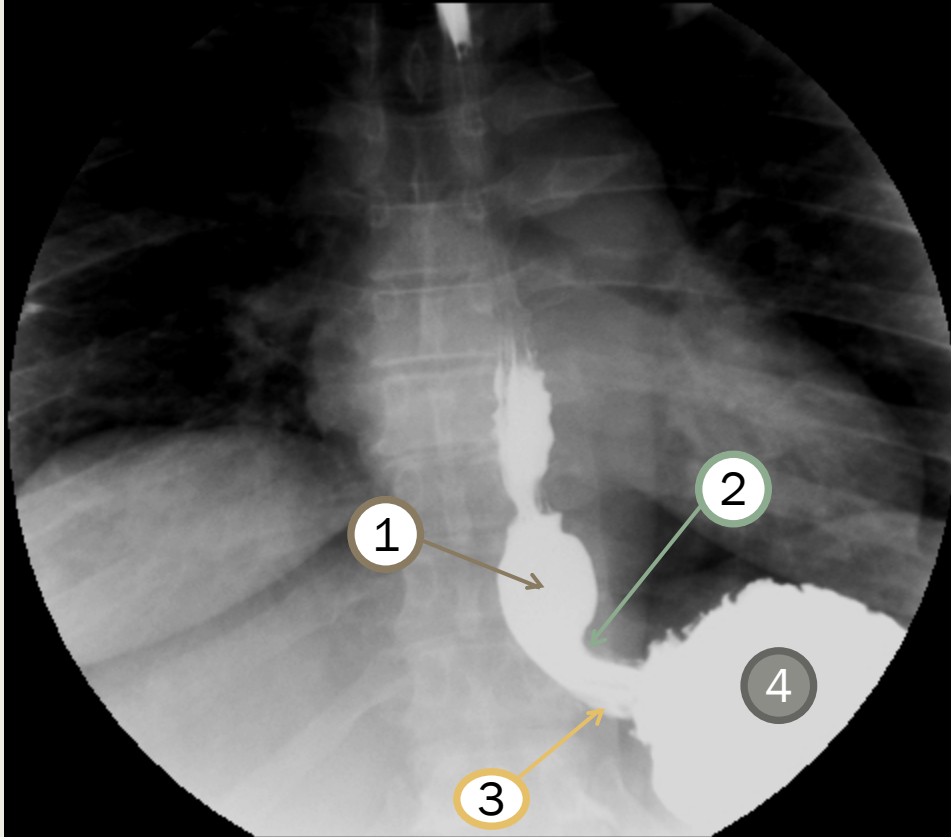
Warning: Not for diagnostic use



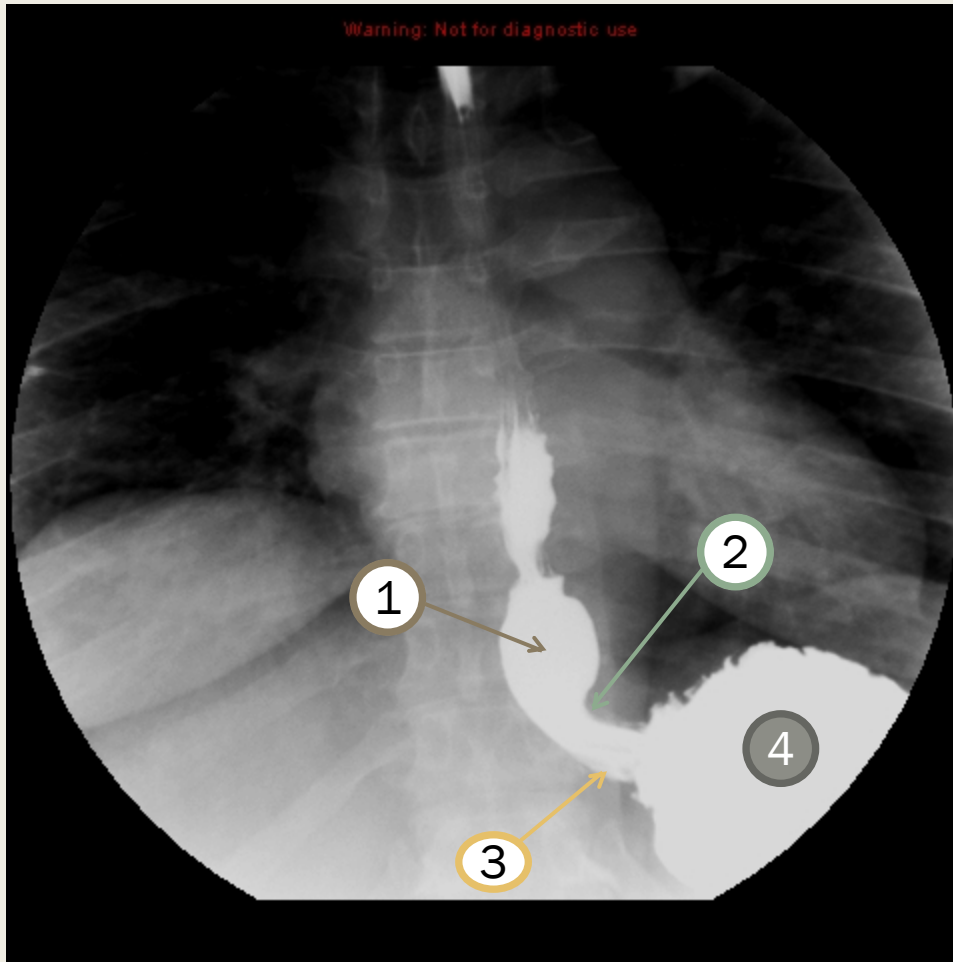
Warning: Not for diagnostic use



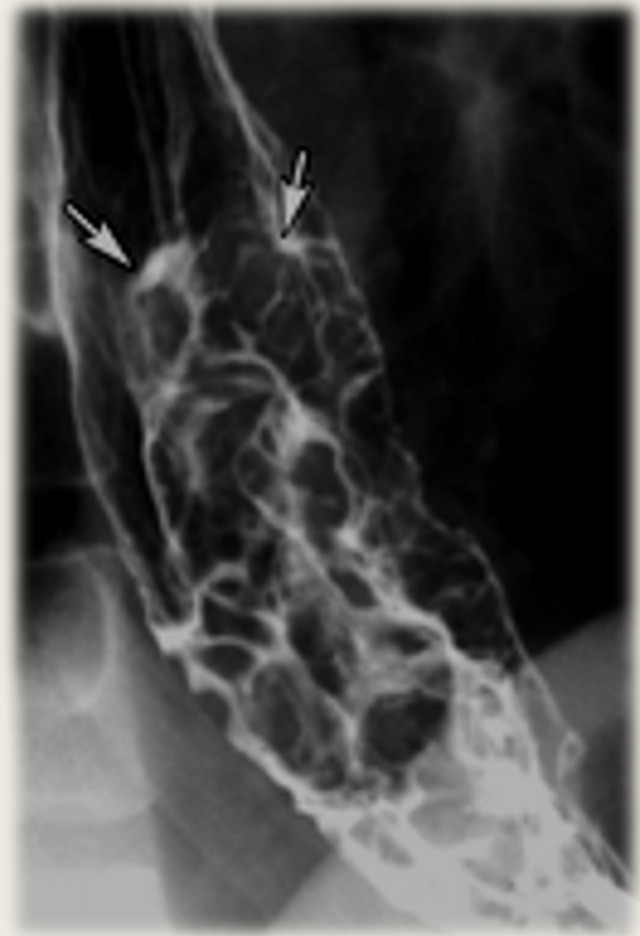
Warning: Not for diagnostic use



Warning: Not for diagnostic use



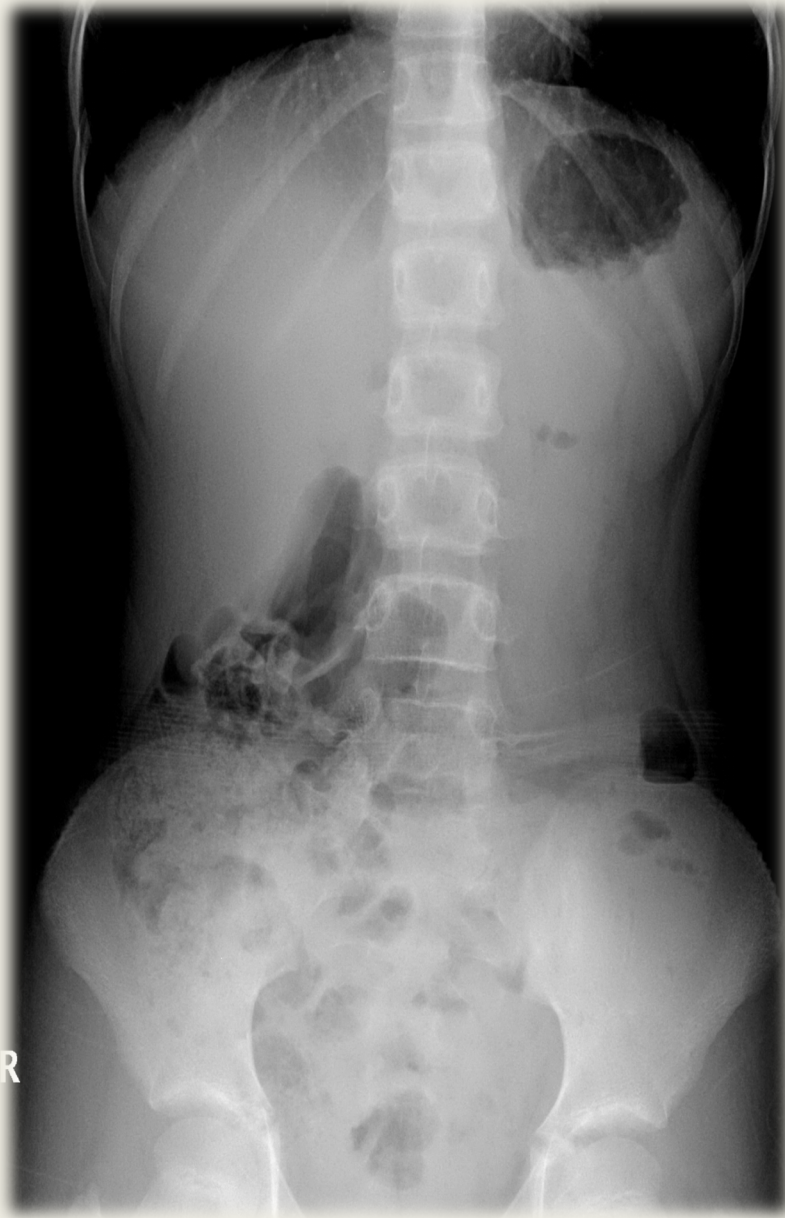
- 1-esophageal vestibule (ampulla).
- 2- B ring.
- 3- gastroesophageal junction.
- 4- stomach (gastric fundus).

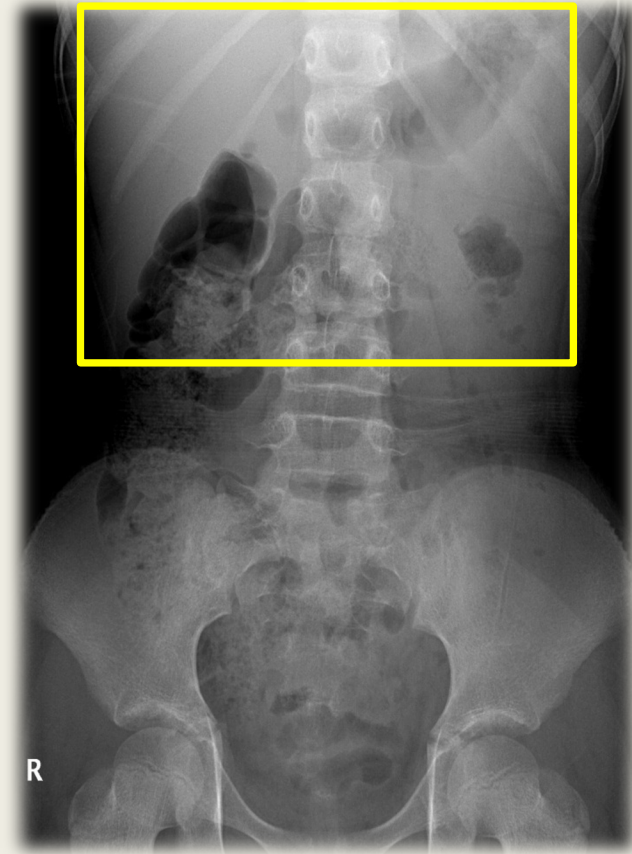
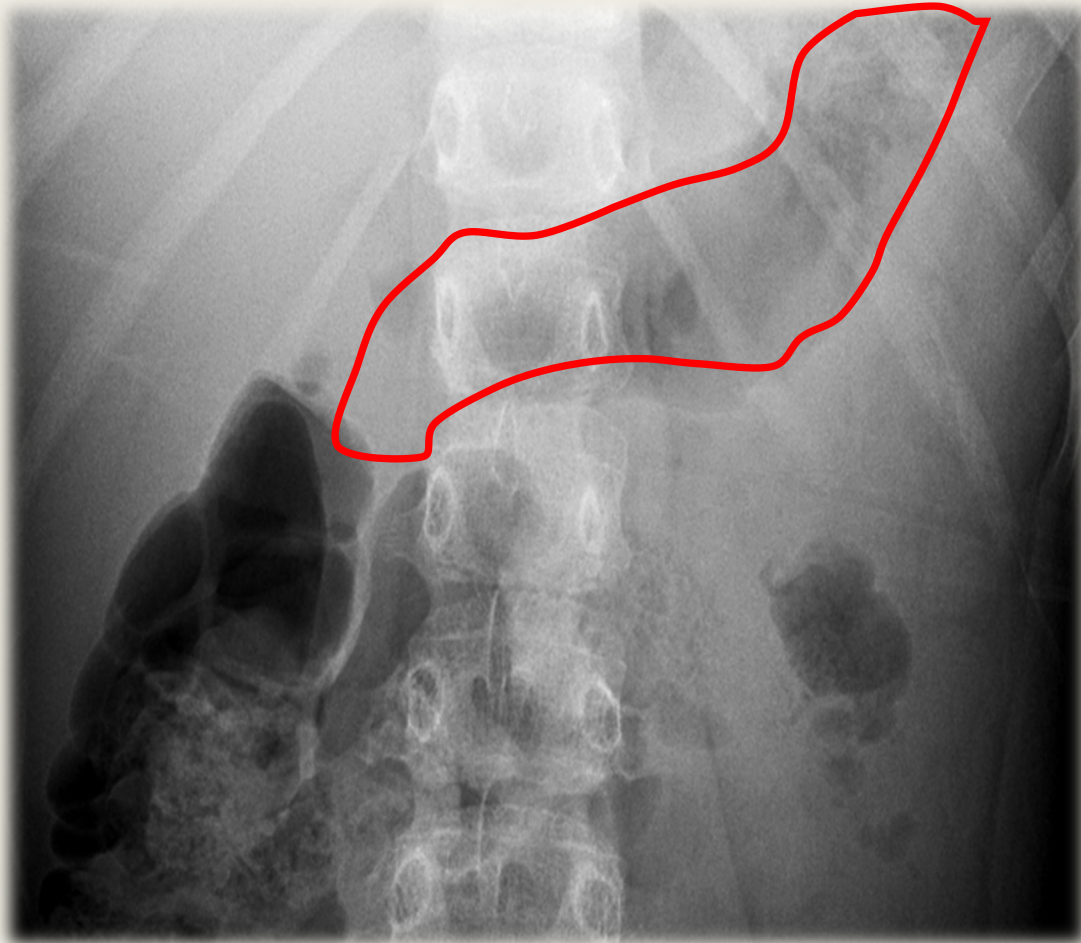


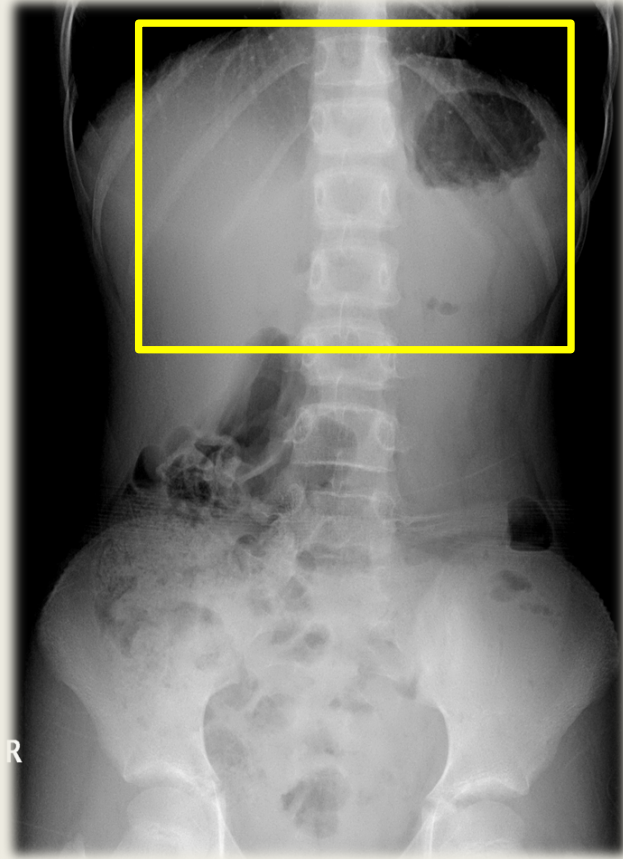
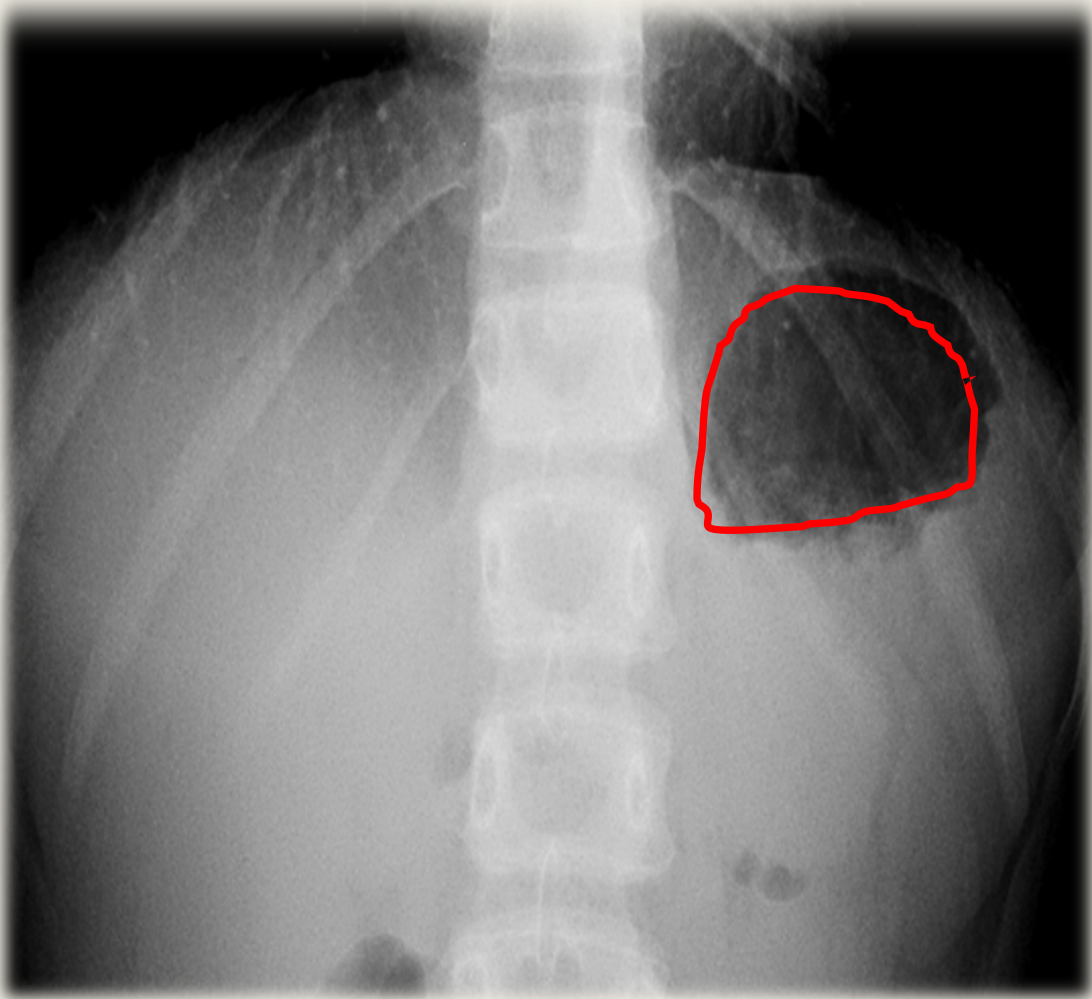
Abnormal esophagus (masses)

STOMACH ANATOMY

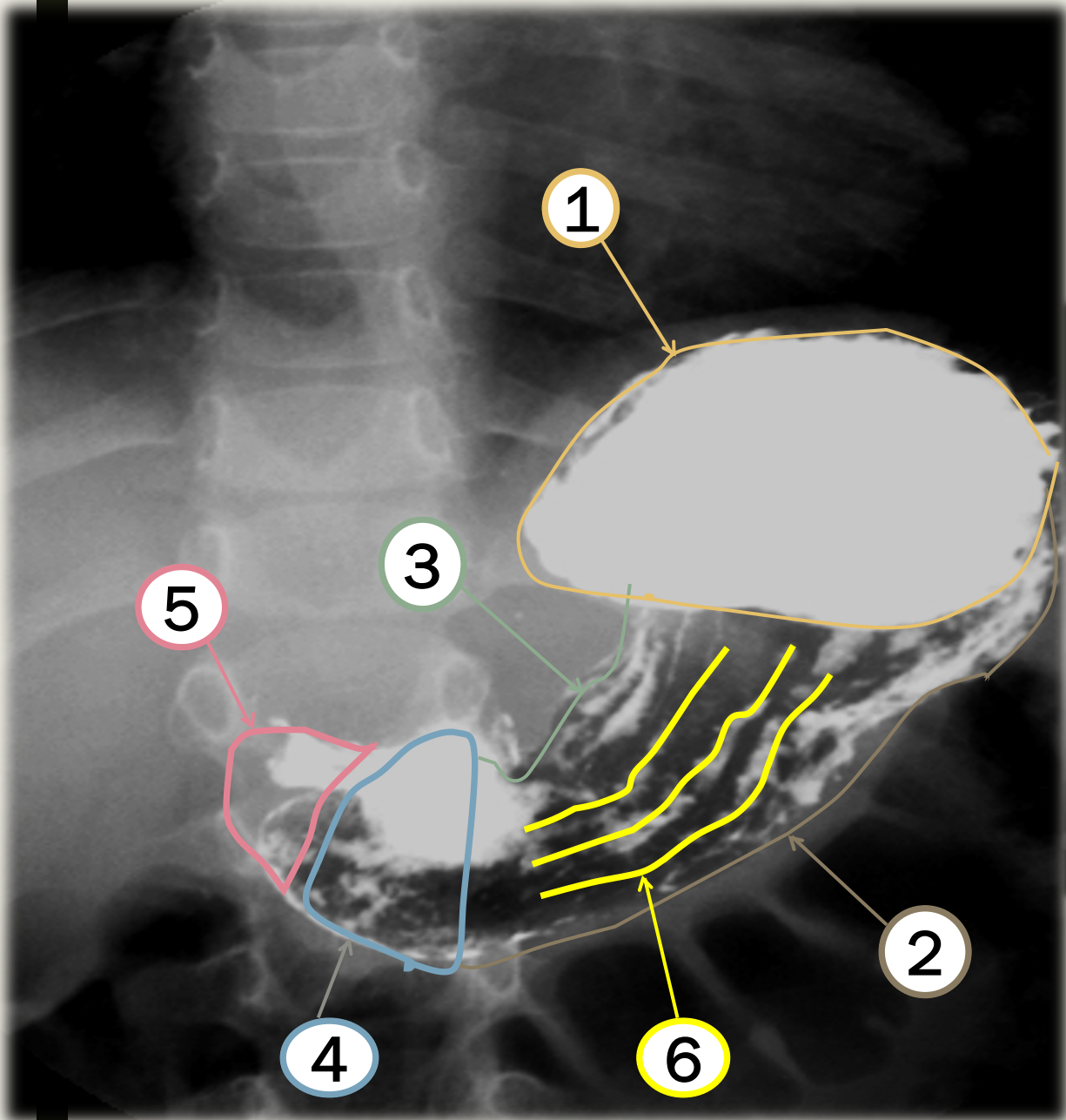
X RAY

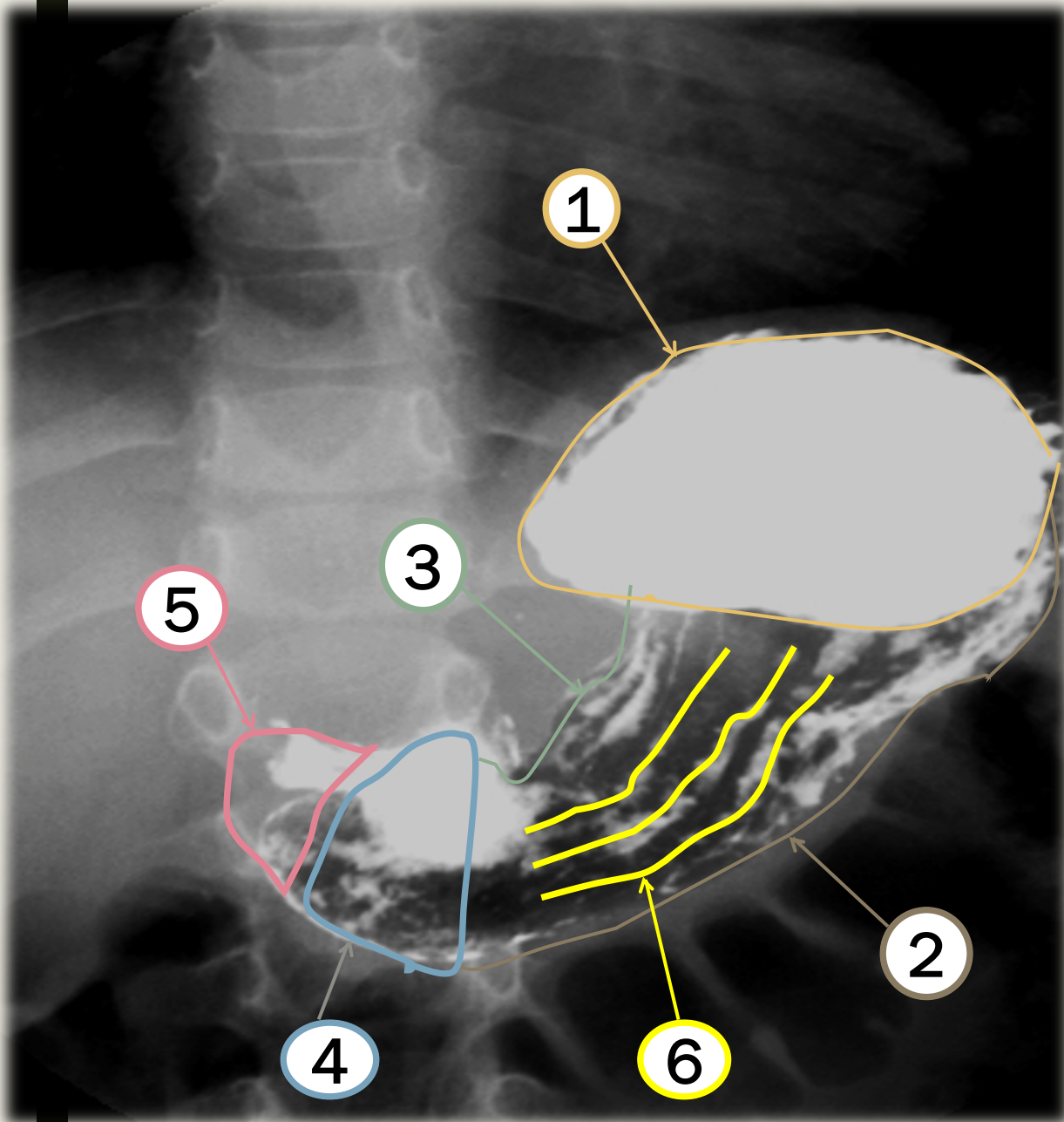




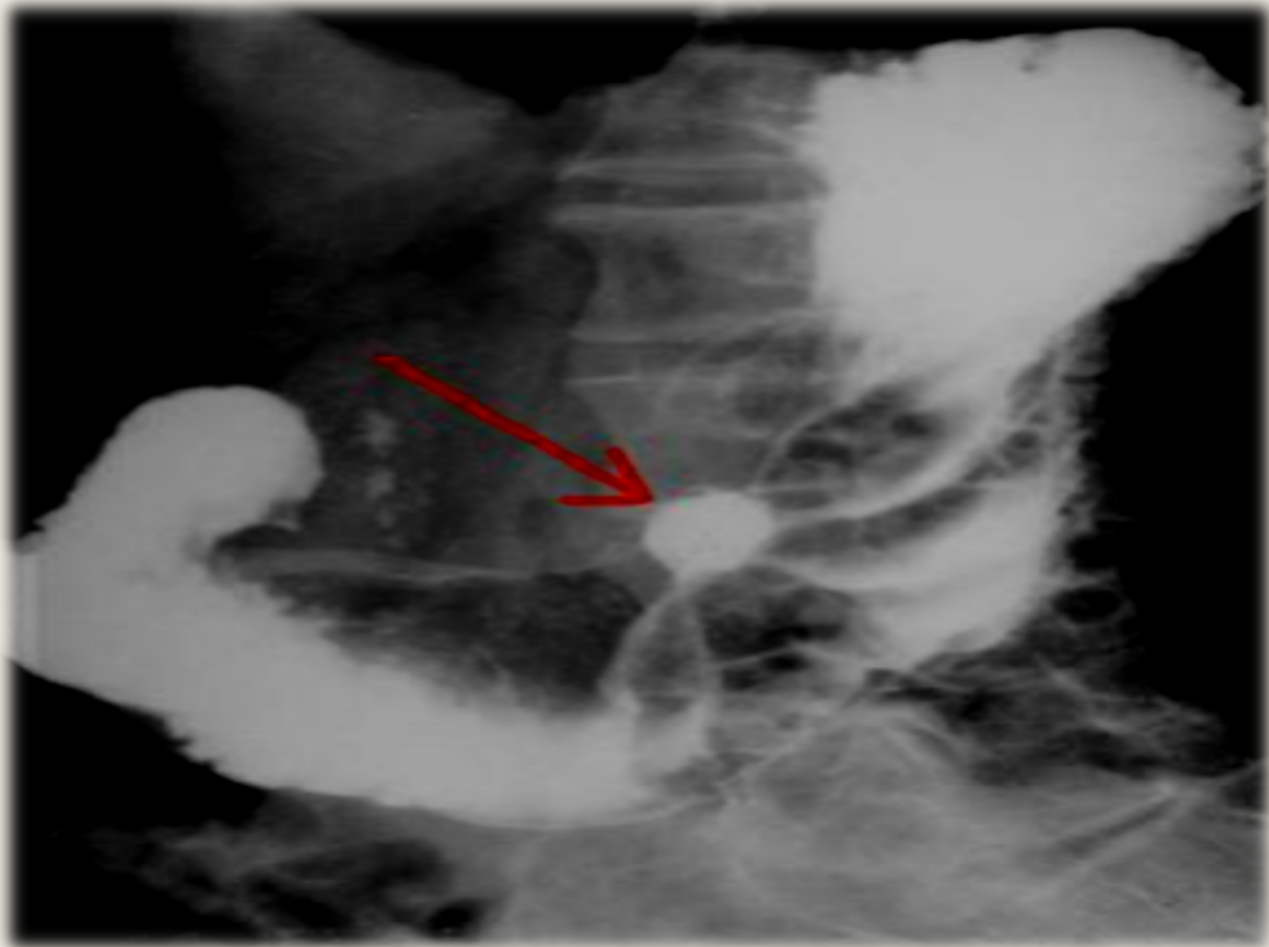


Fluoroscopy





1. Stomach fundus
2. Greater curvature
3. Lesser curvature
4. Antrum
5. Pylorus
6. Mucosal folds

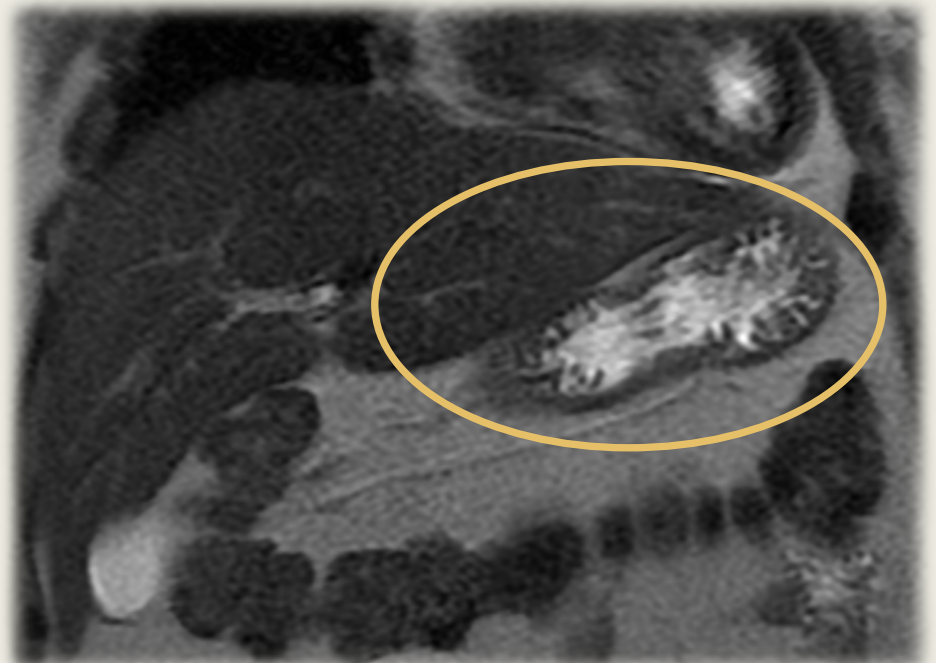


Gastric ulcer

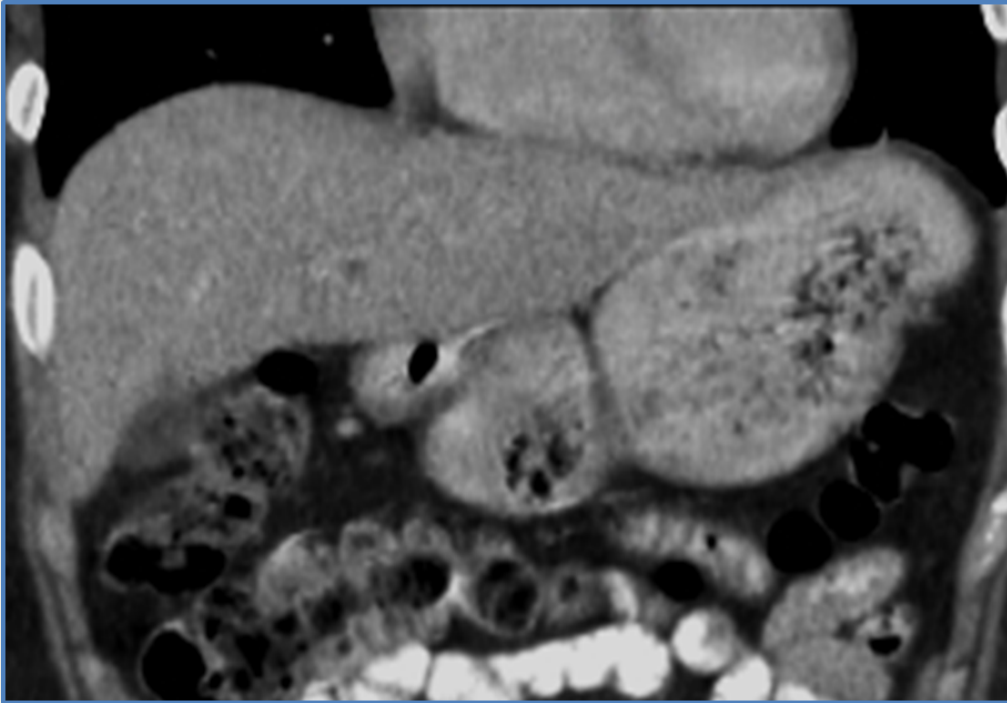
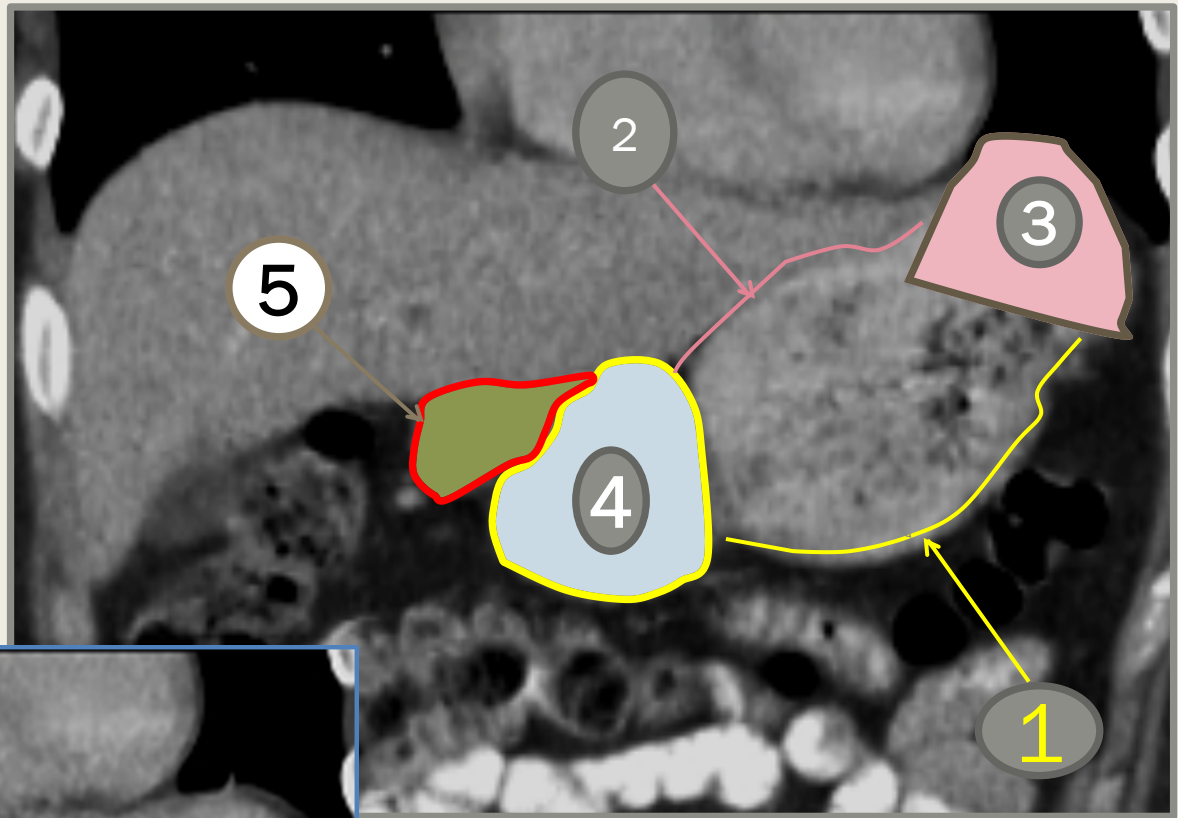
CT Scan vs MRI

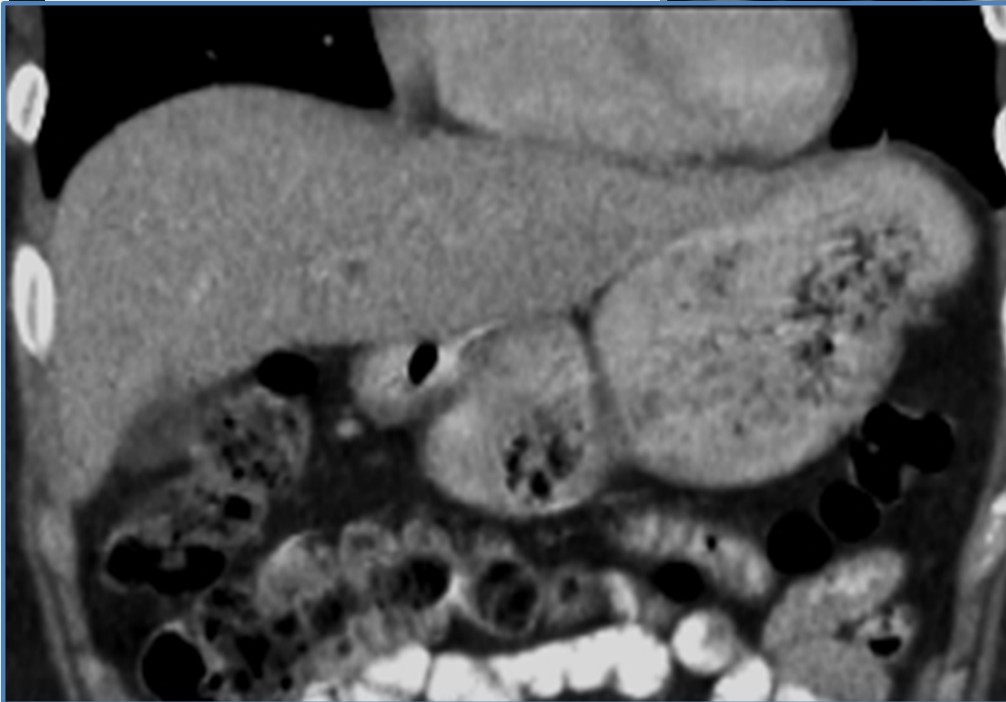
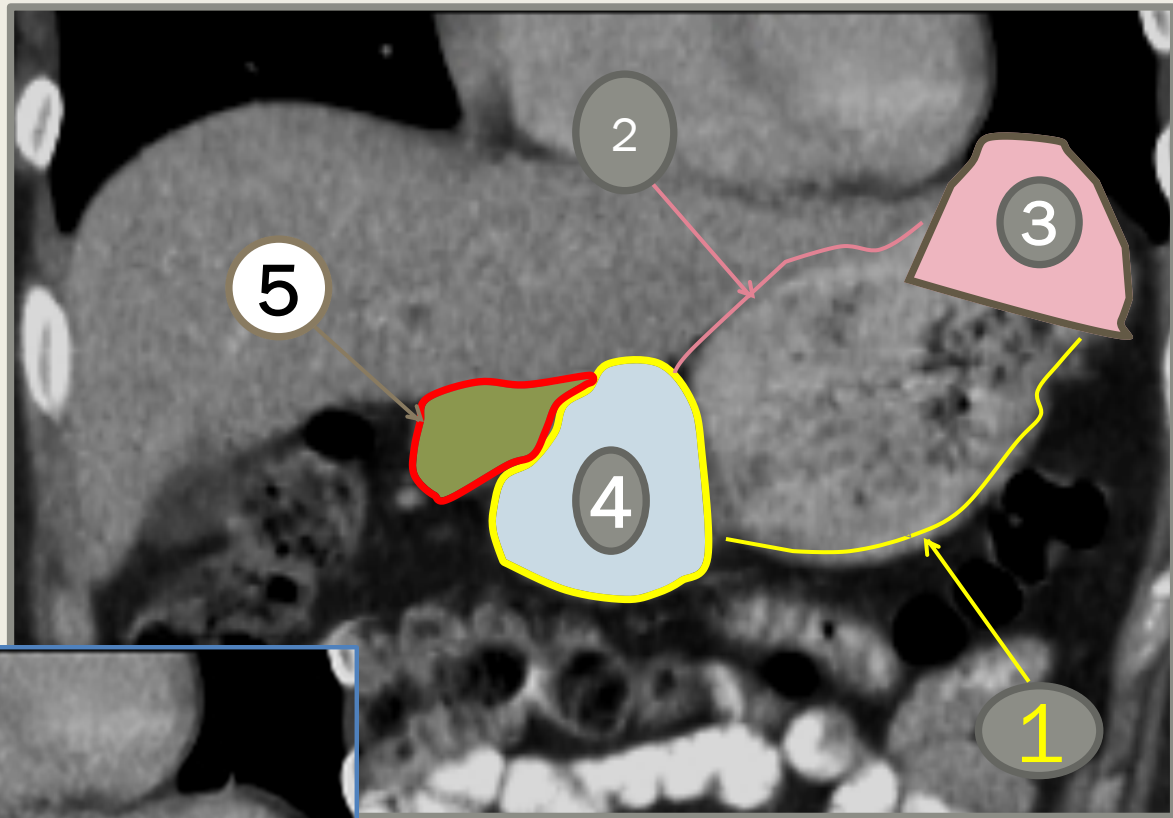


CT SCAN

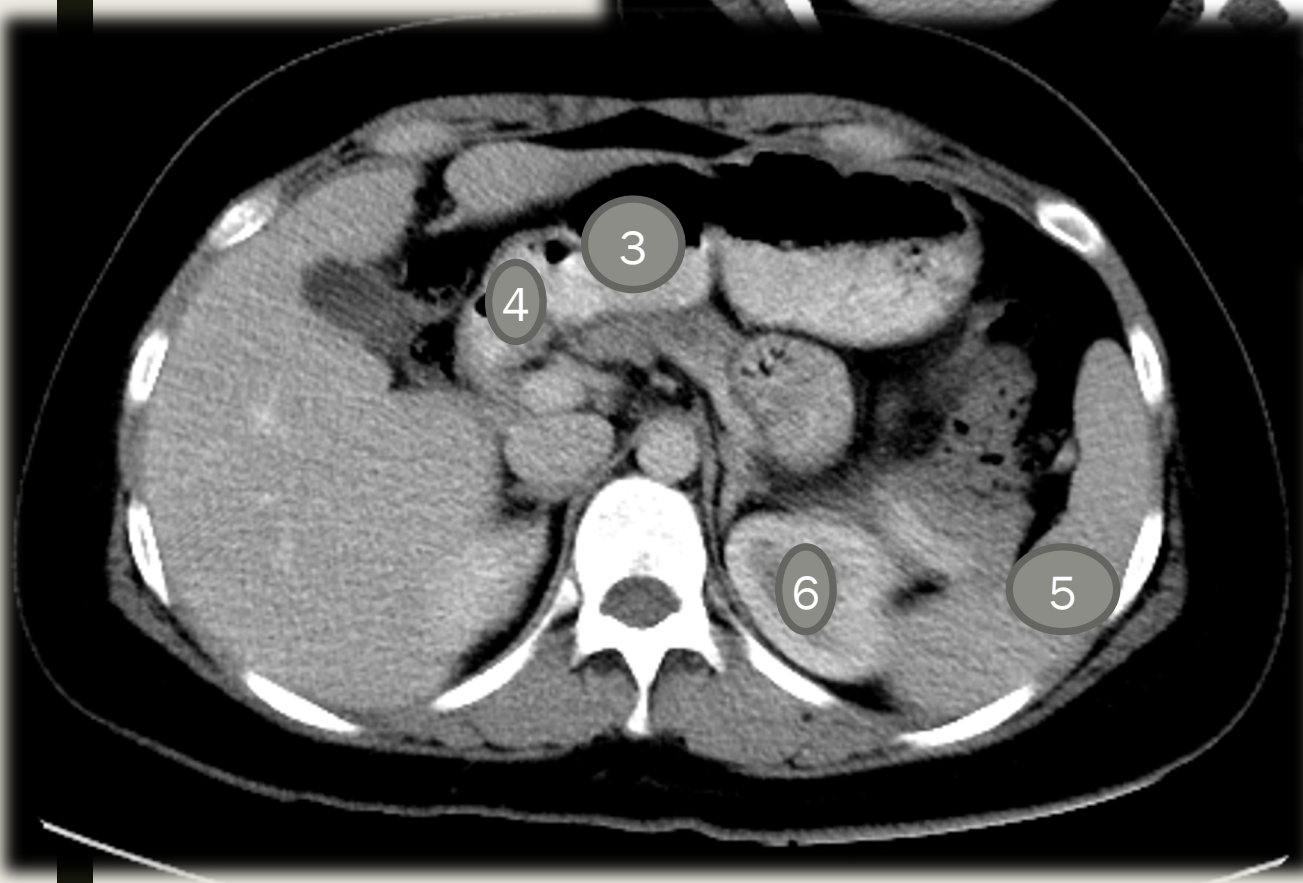


MRI

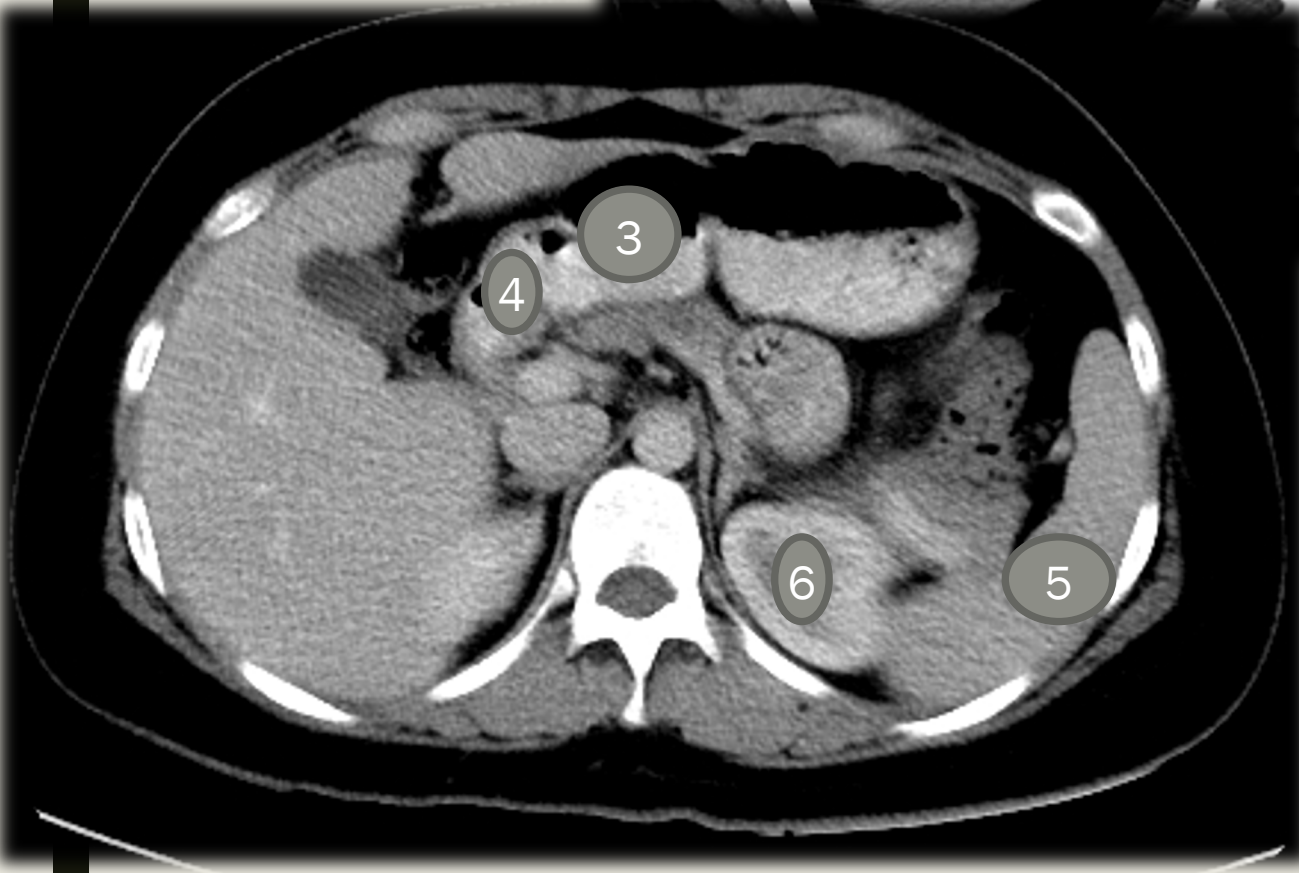




- 1-Greater curvature
- 2-Lesser curvature
- 3-Stomach fundus
- 4-Antrum
- 5-Pylorus



1. Stomach
2. Liver
3. Antrum
4. Pylorus
5. Spleen
6. Kidney



Thank you

