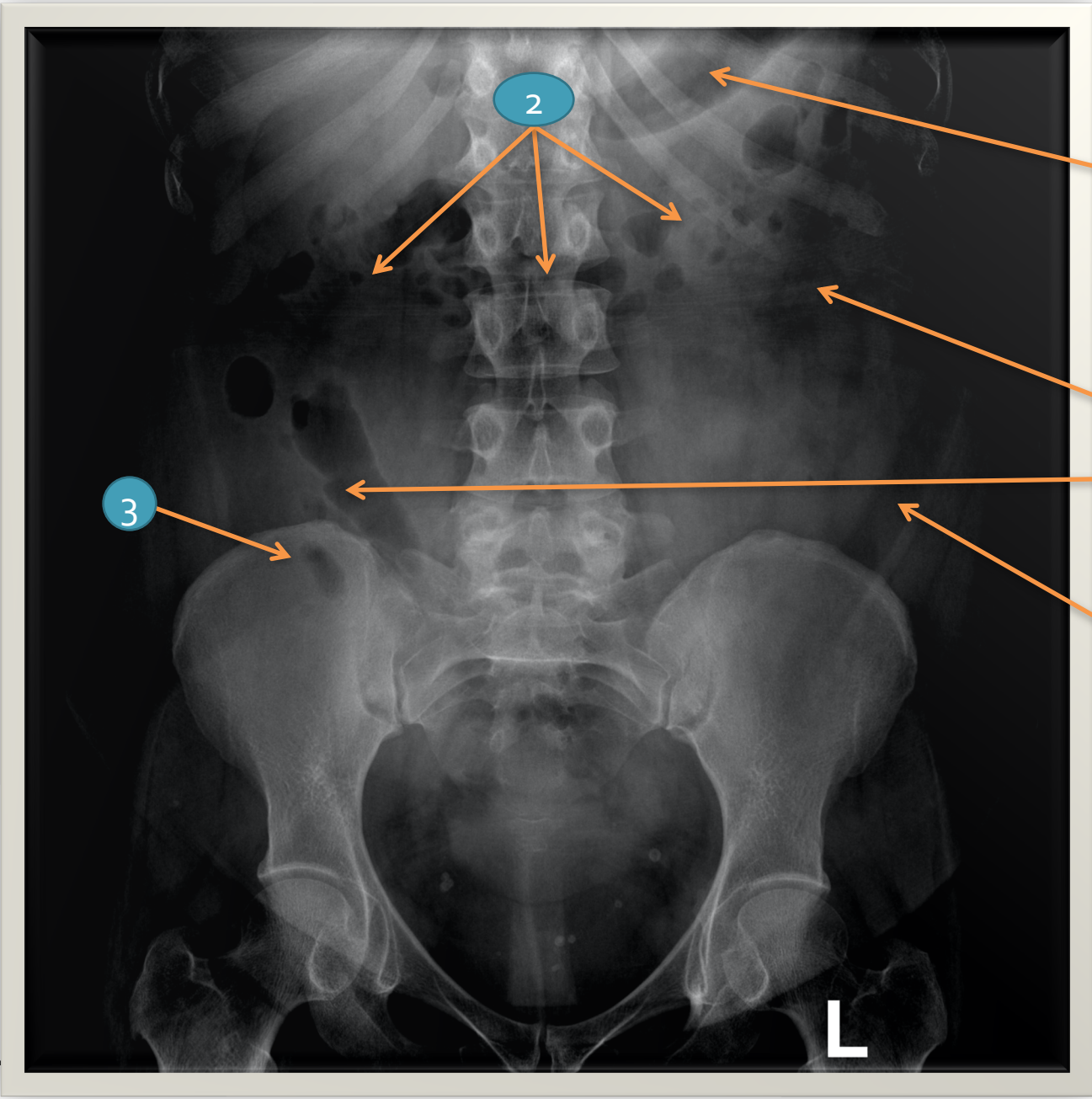


# **RADIOLOGICAL ANATOMY OF THE SMALL & LARGE BOWEL**

**Practical Session (2)  
Radiology**



1

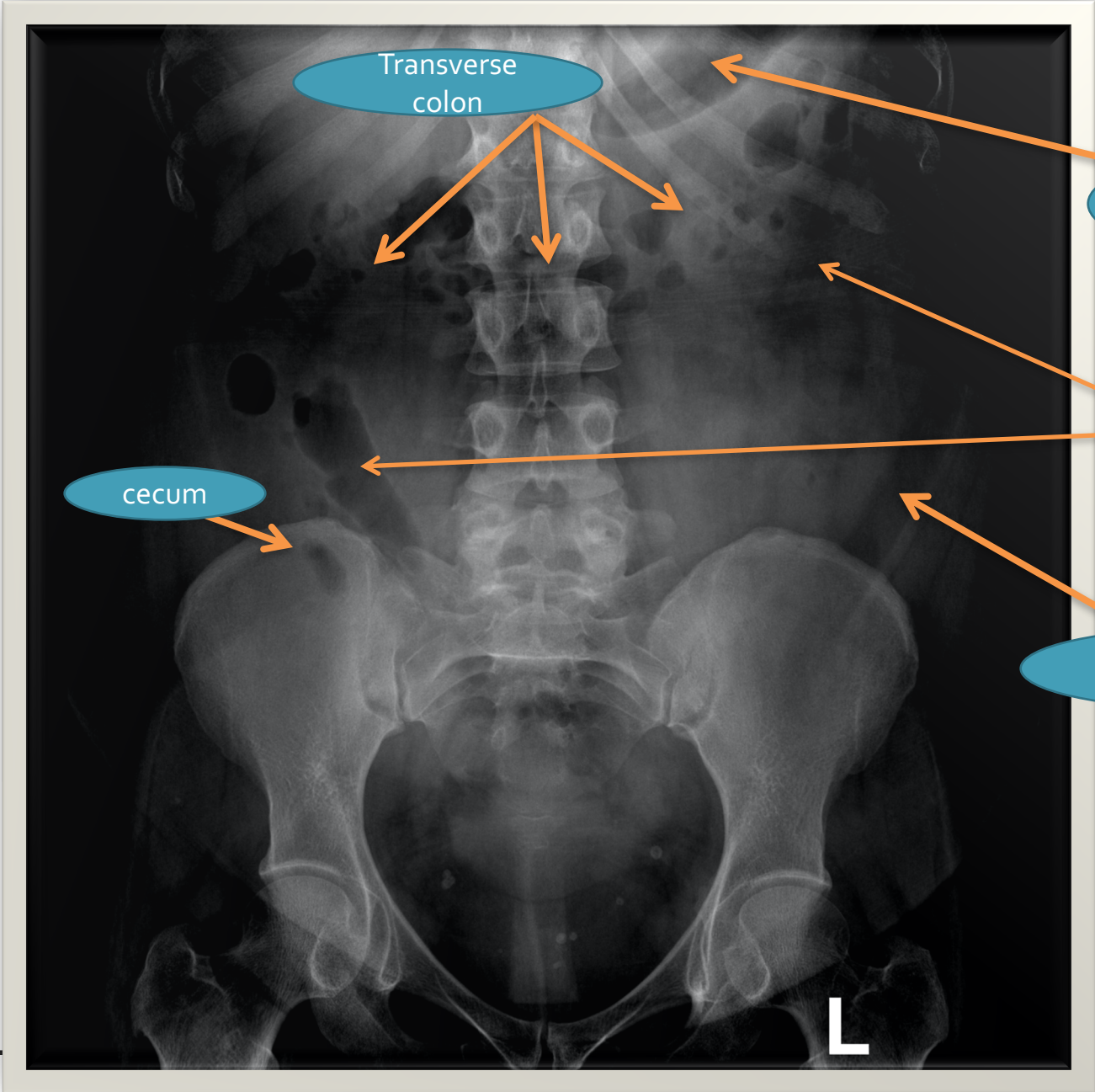
5

4

3

2





Transverse colon

stomach

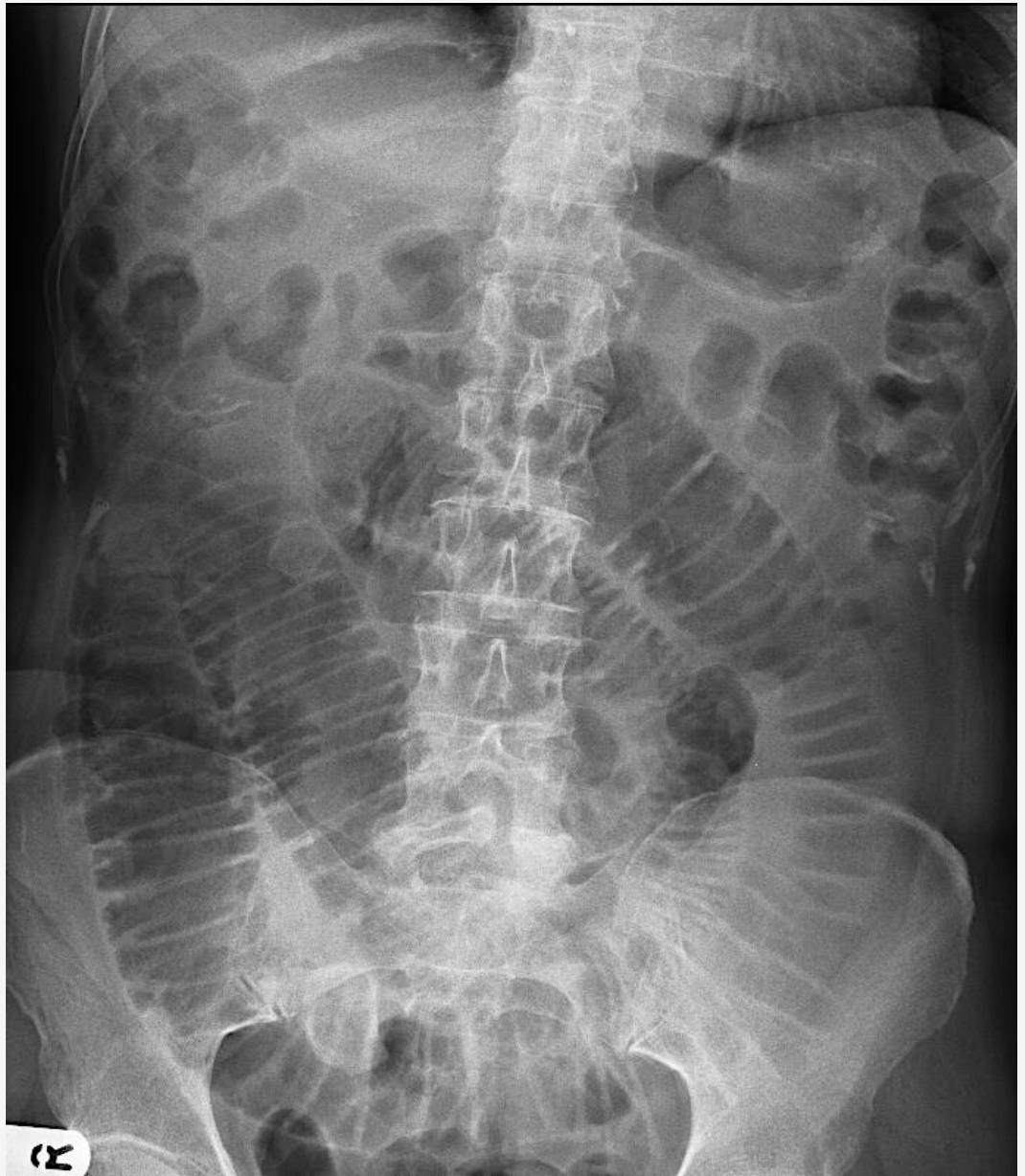
Small bowel

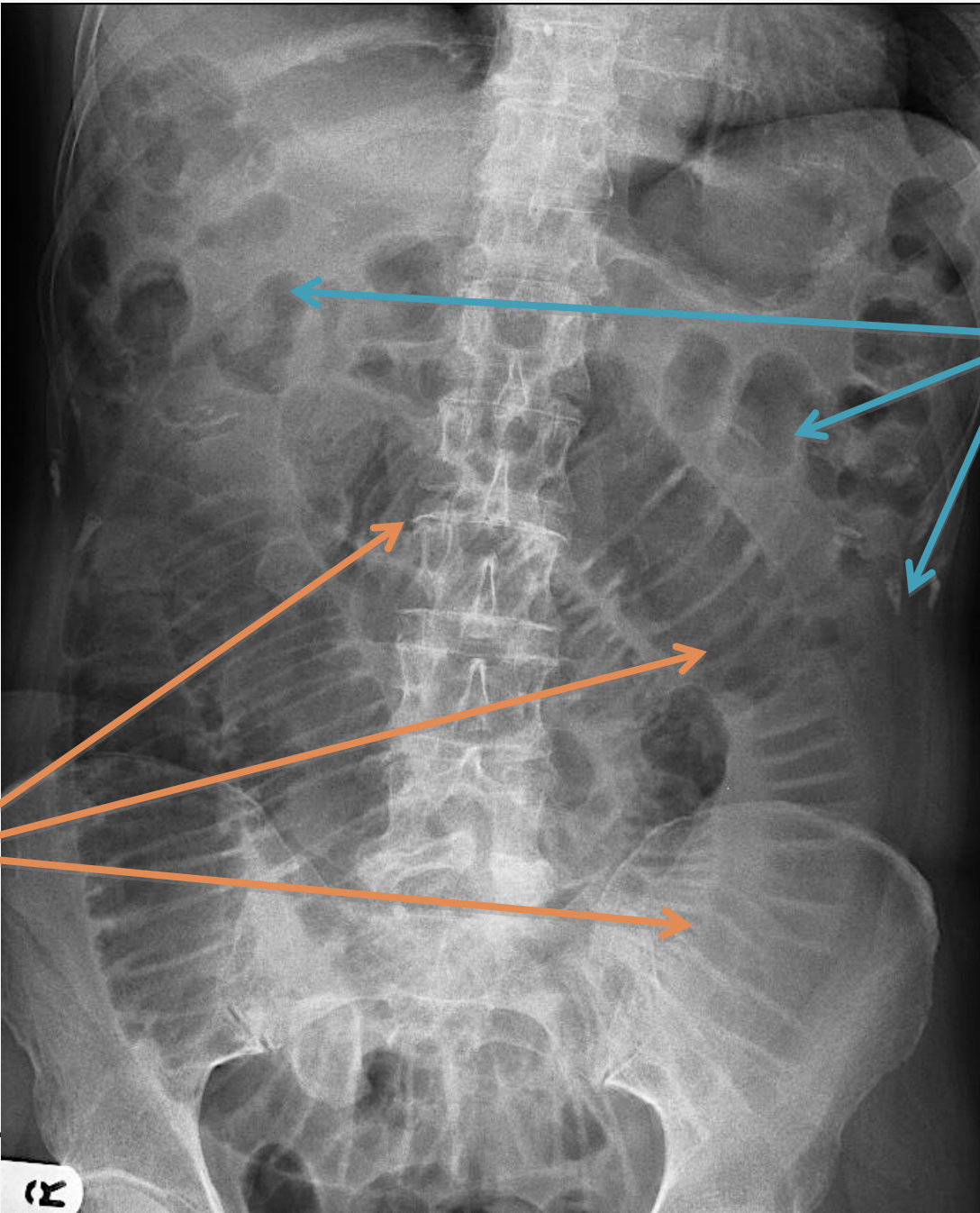
cecum

Descending colon

L

Where is the **small** bowel and where is the **large** bowel ?

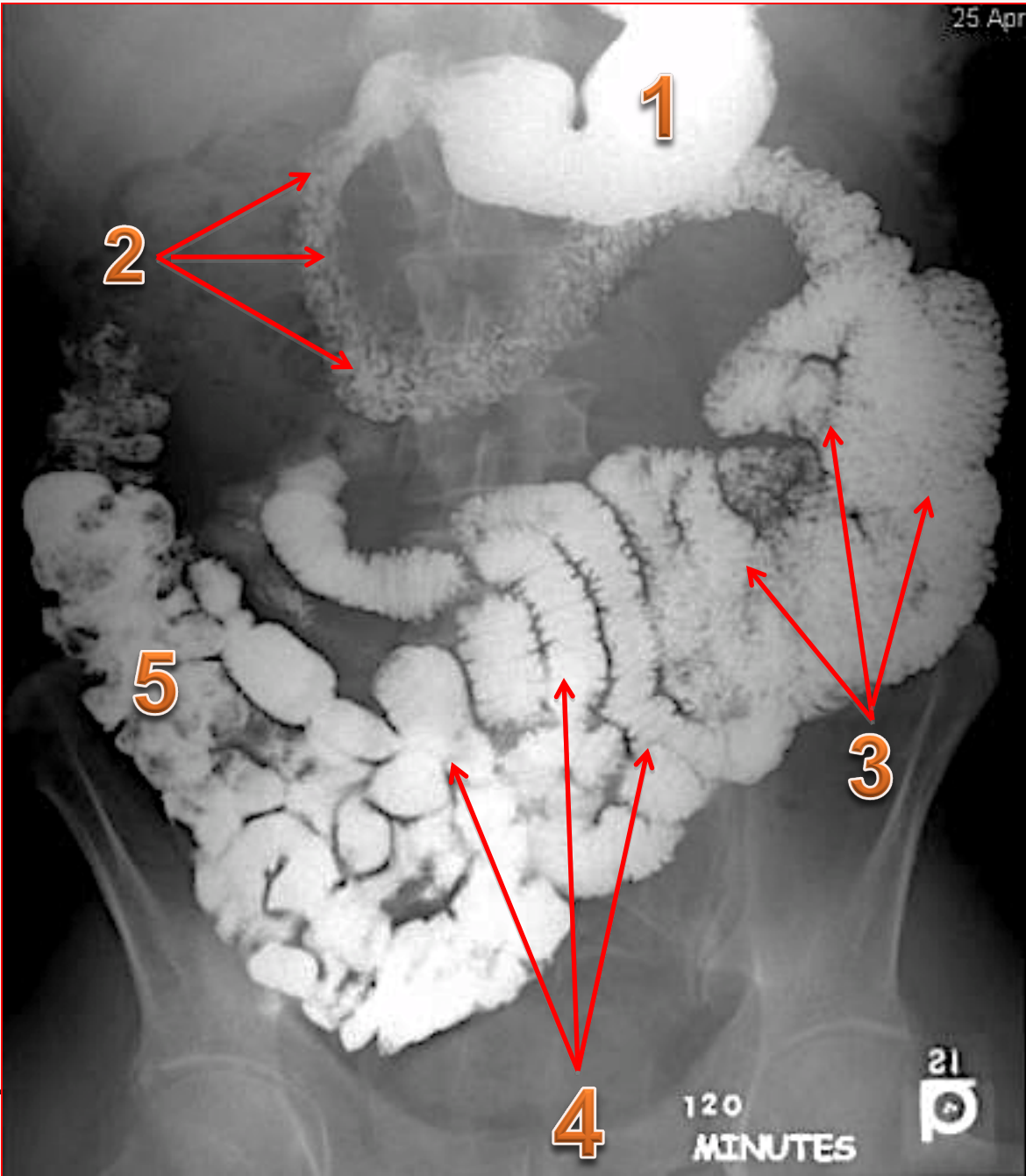


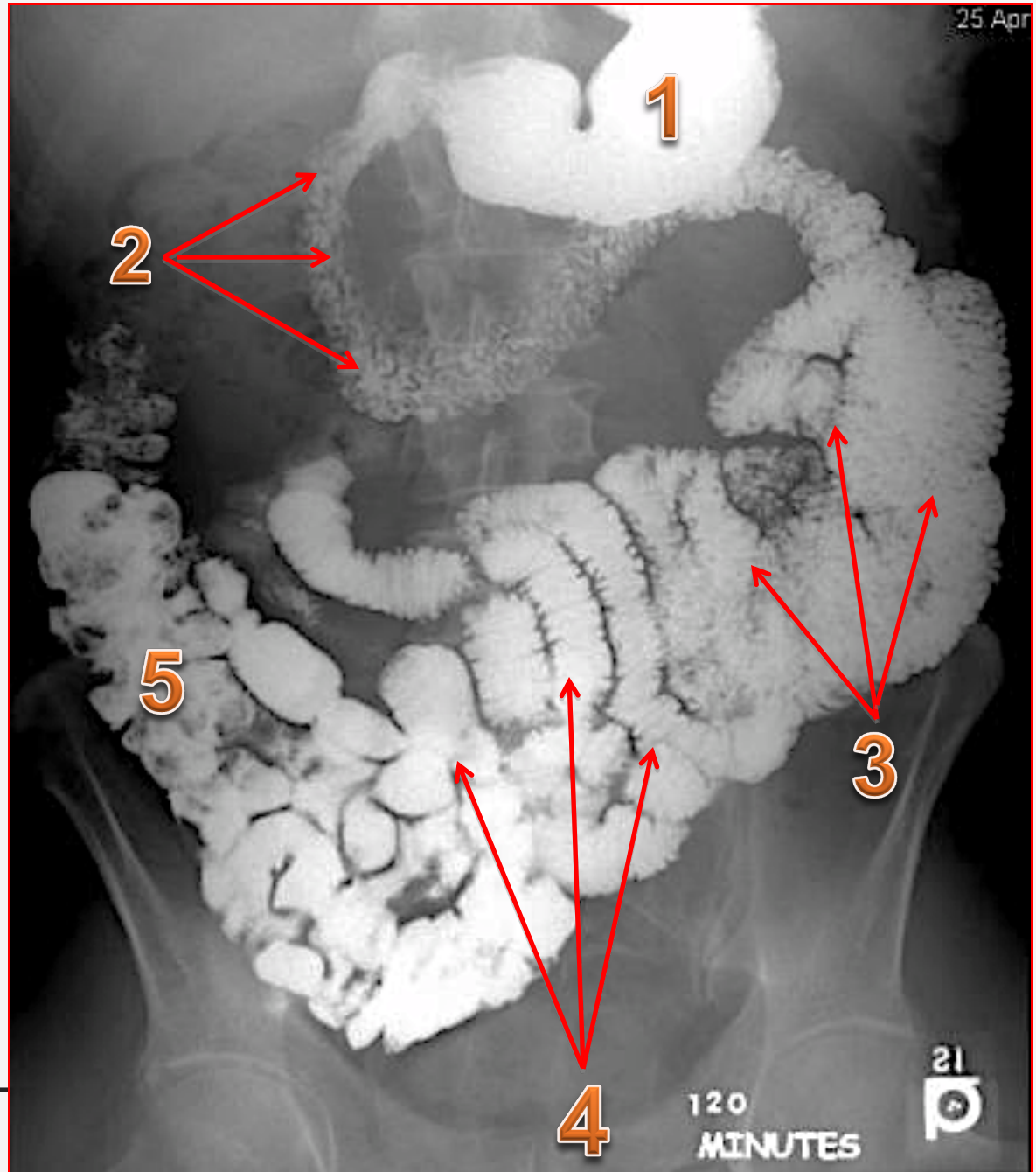


**Large  
bowel**

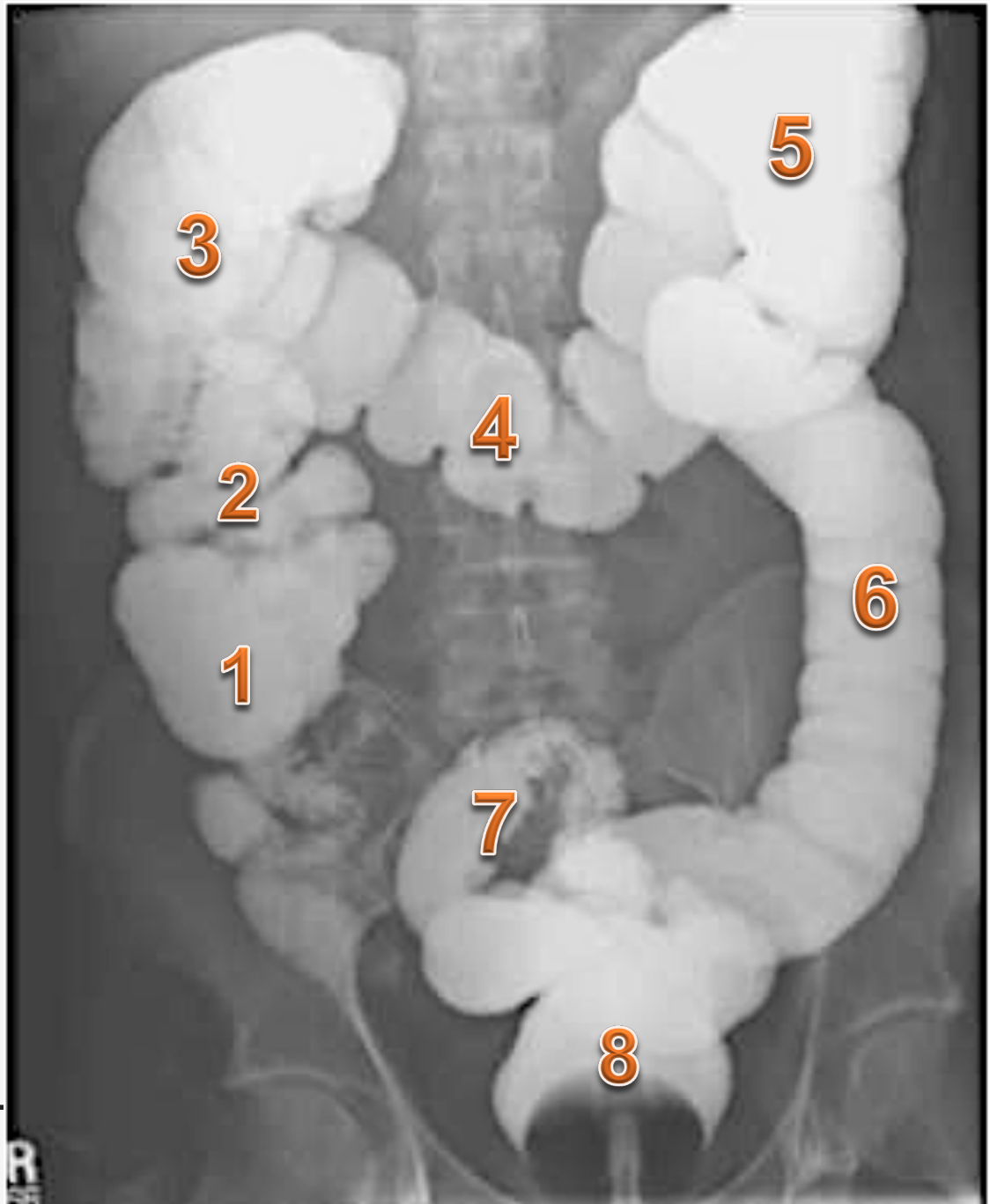
**Small  
bowel**

27



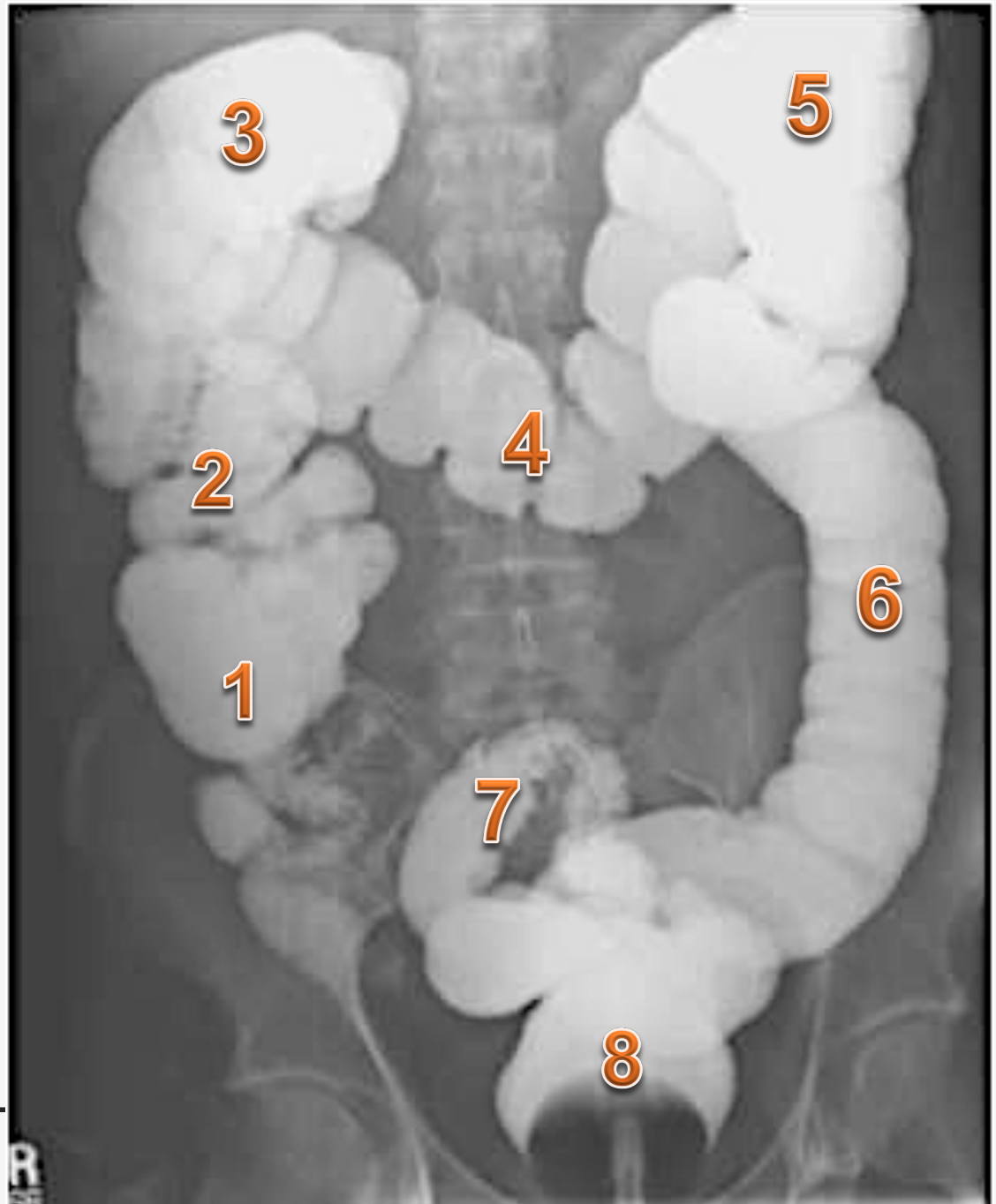


- 1- Stomach
- 2- Duodenum
- 3- Jejunum
- 4- Ileum
- 5- Cecum

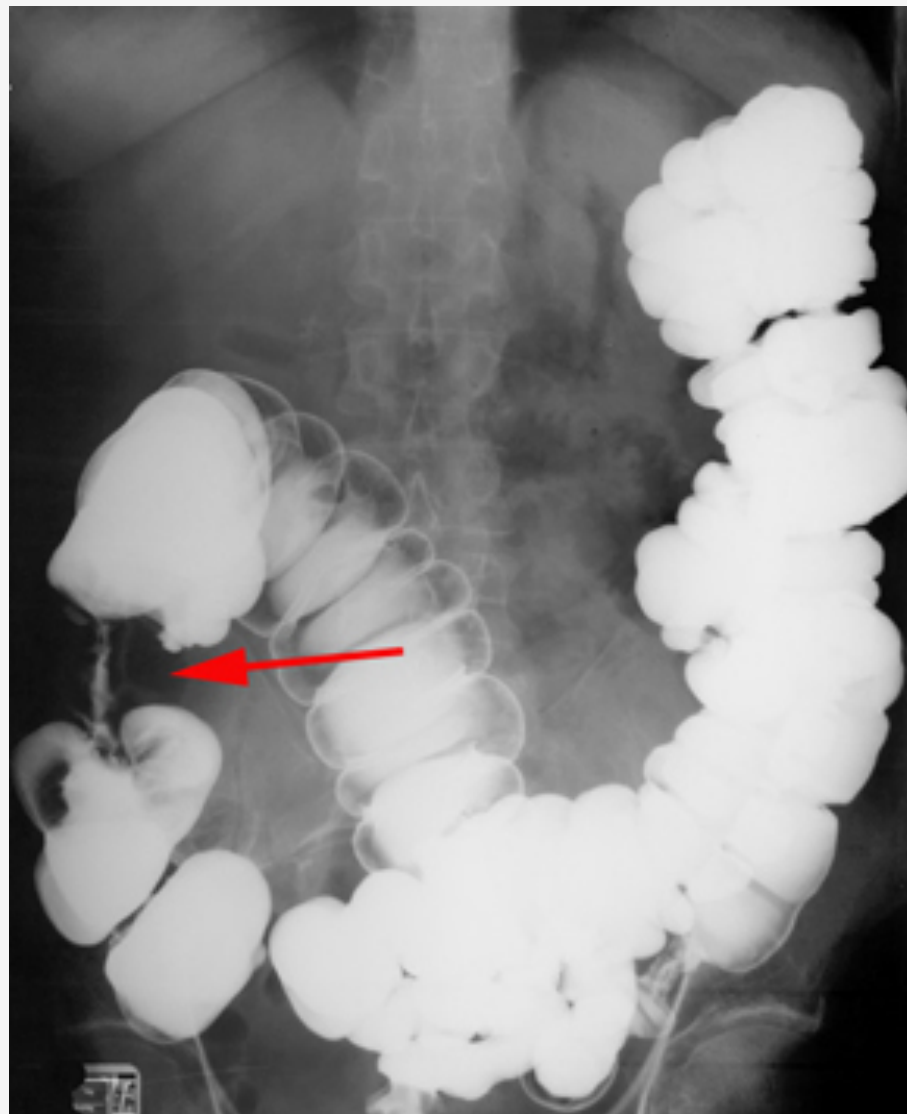




1. Cecum
2. Ascending colon
3. Hepatic flexure
4. Transvers colon
5. Splenic flexure
6. Descending colon
7. Sigmoid colon
8. rectum

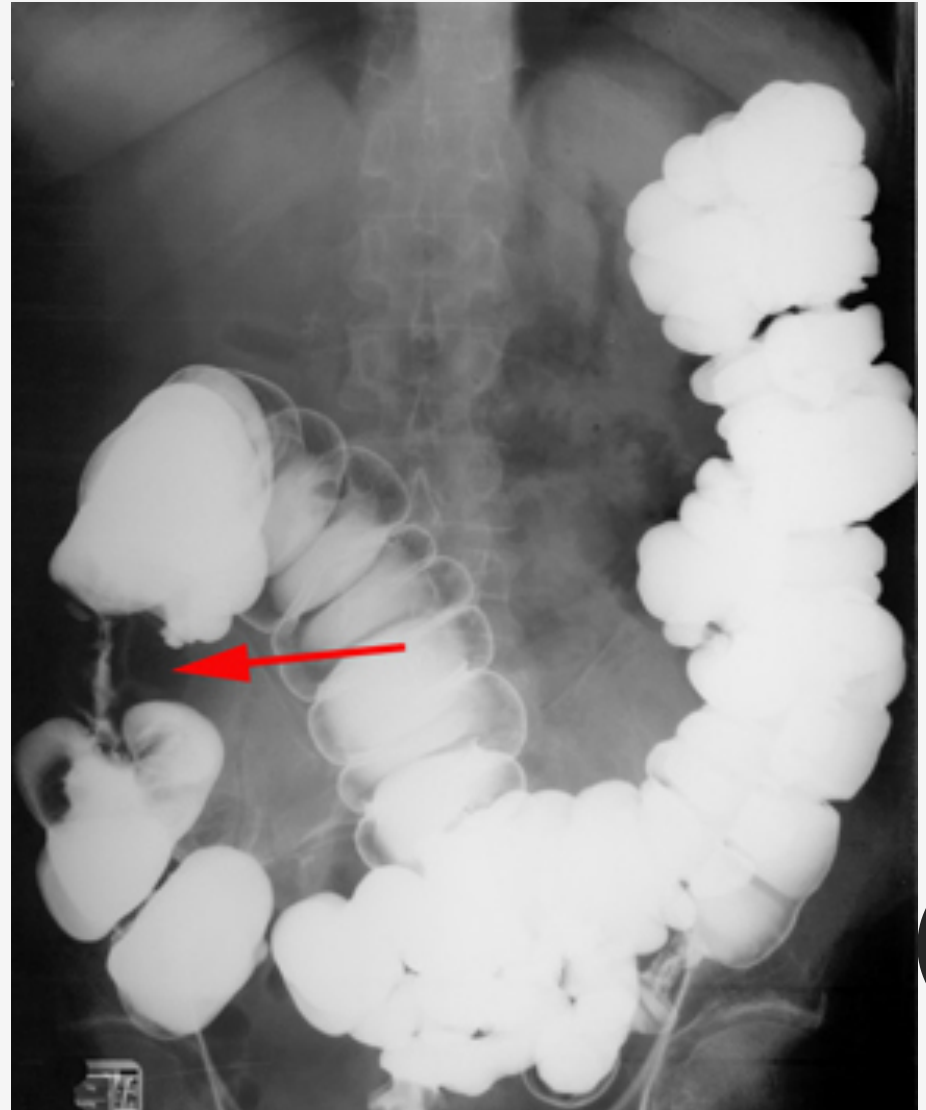


Is this study normal or abnormal? And why?



Abnormal study

Colon Cancer  
(apple core sign)





Normal



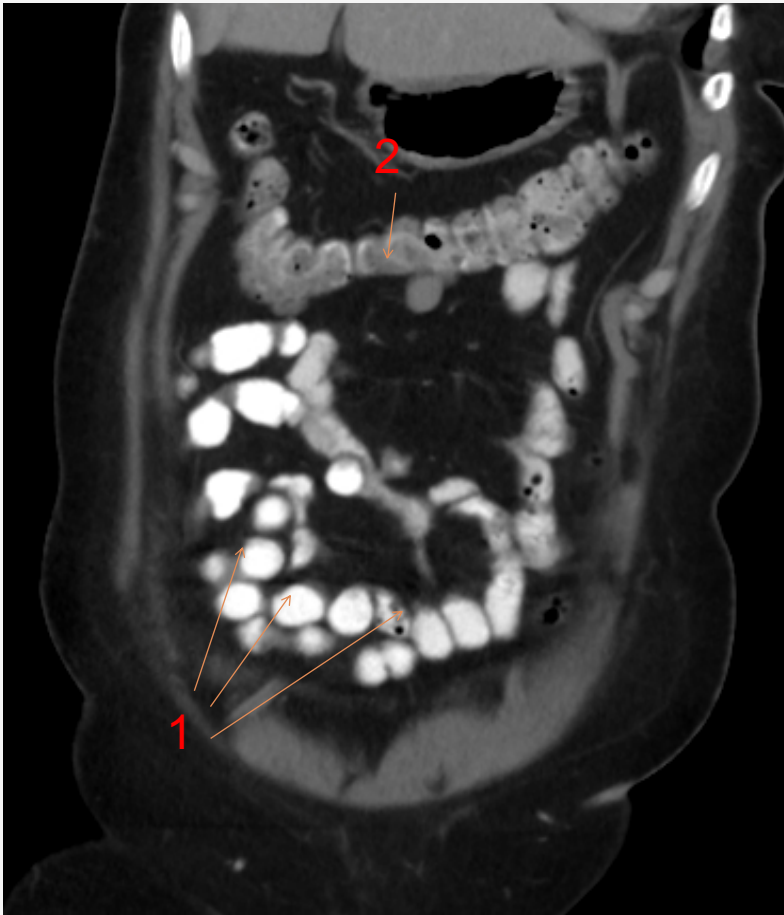
Abnormal

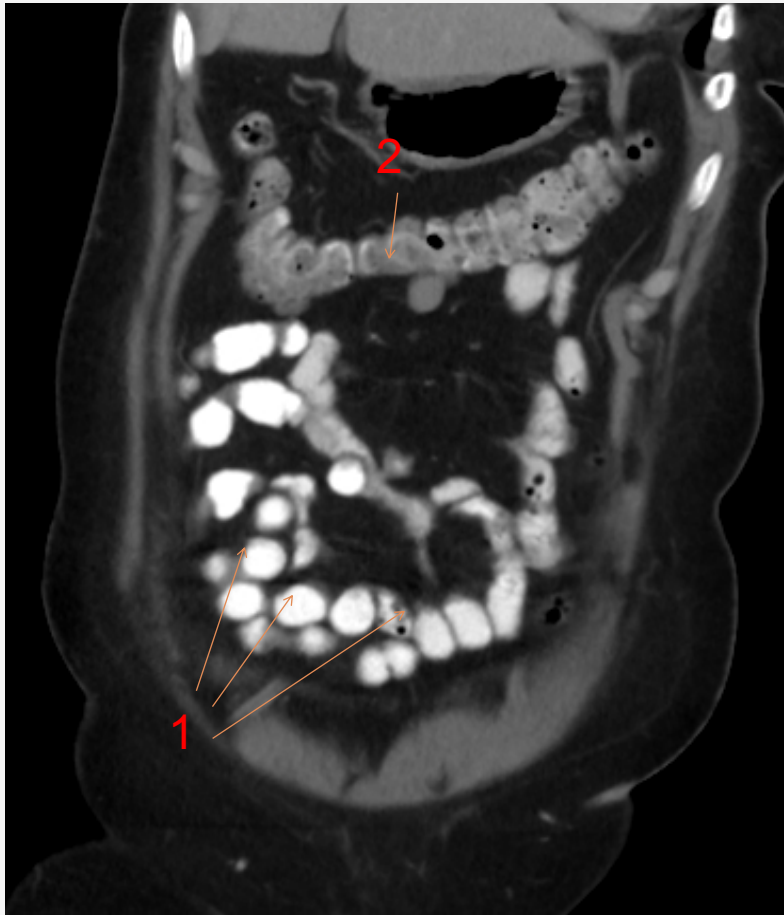
abnormal study  
normal

## Ulcerative colitis

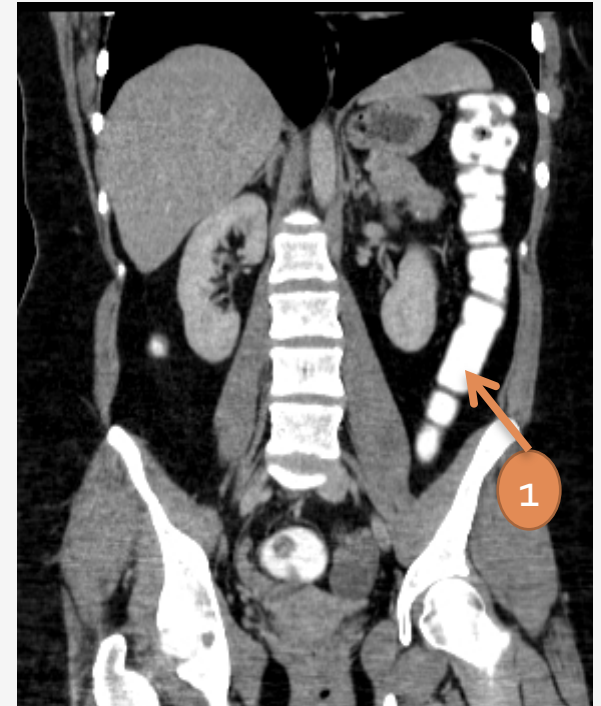
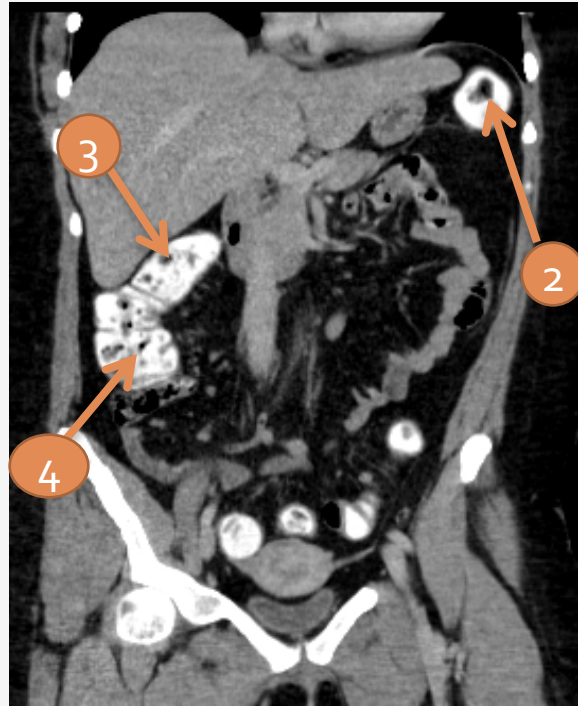
- Feature-less colon (lead pipe appearance)



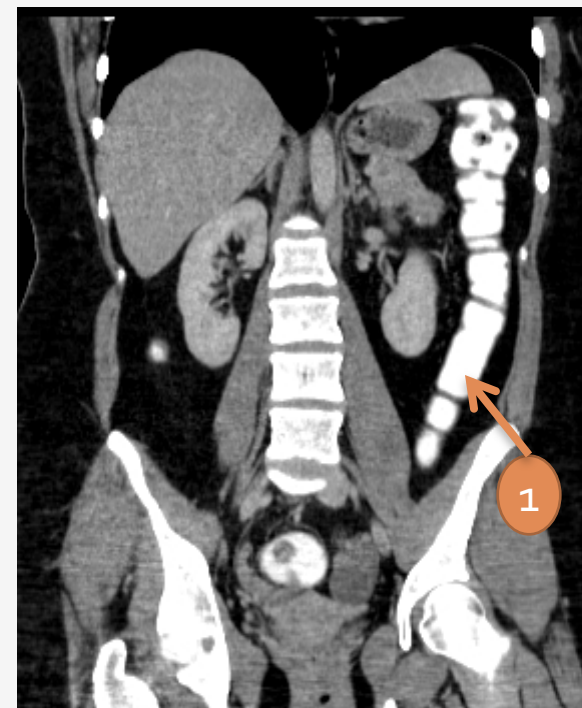
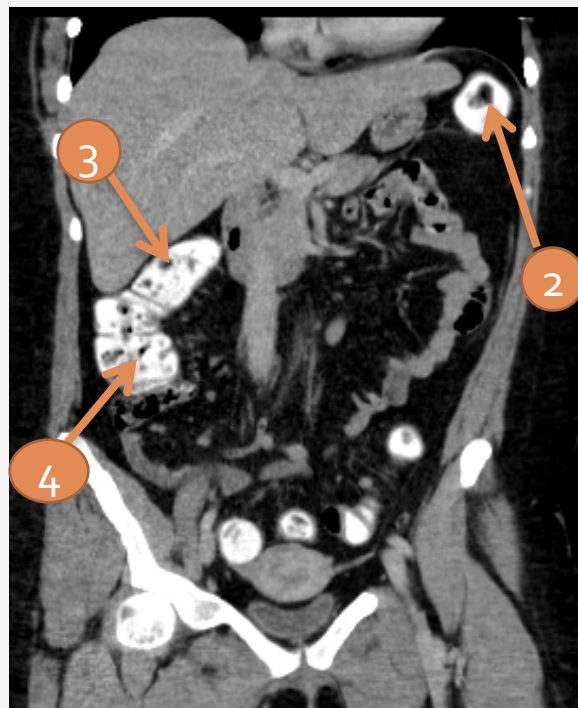




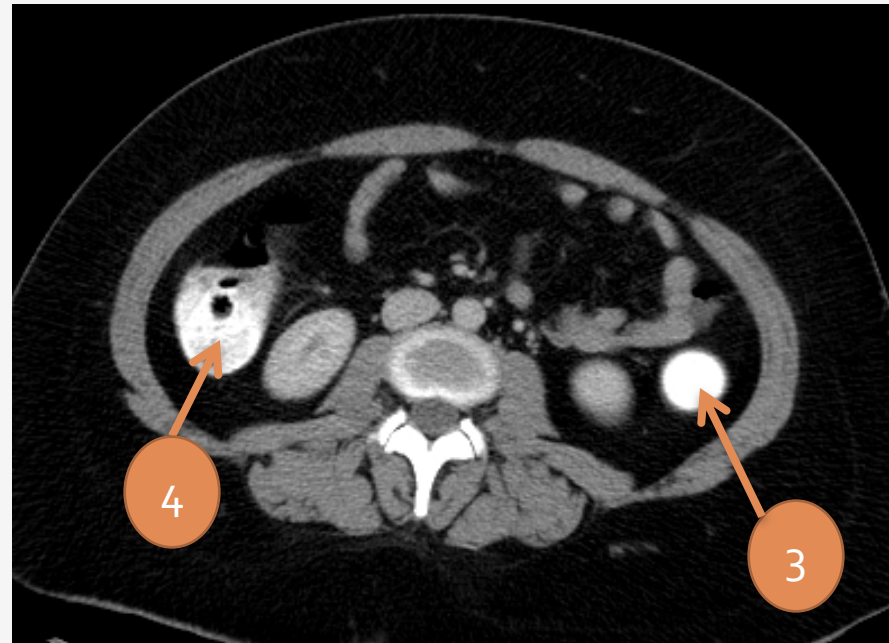
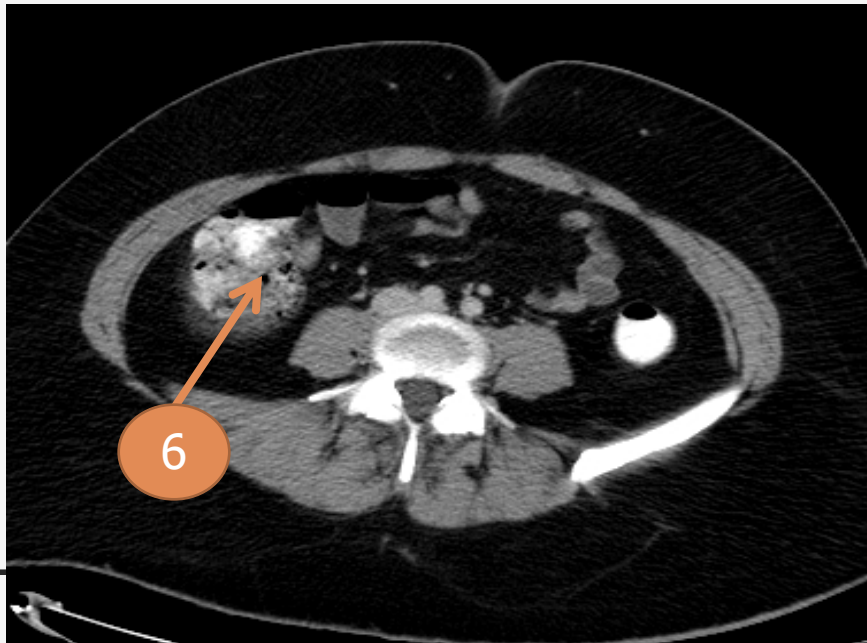
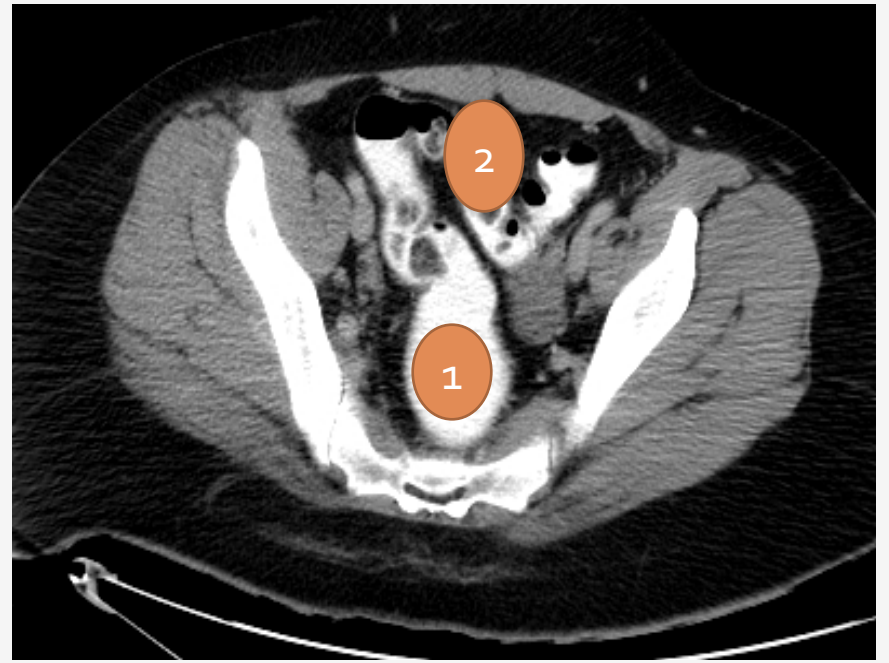
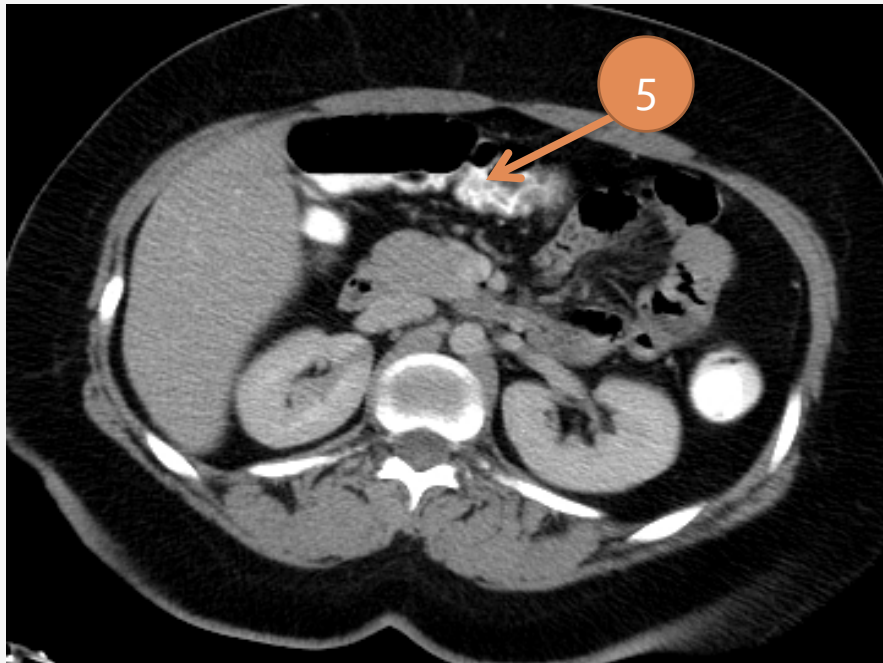
1. Ileum
  2. Transverse colon
  3. Jejunum
  4. Cecum
-

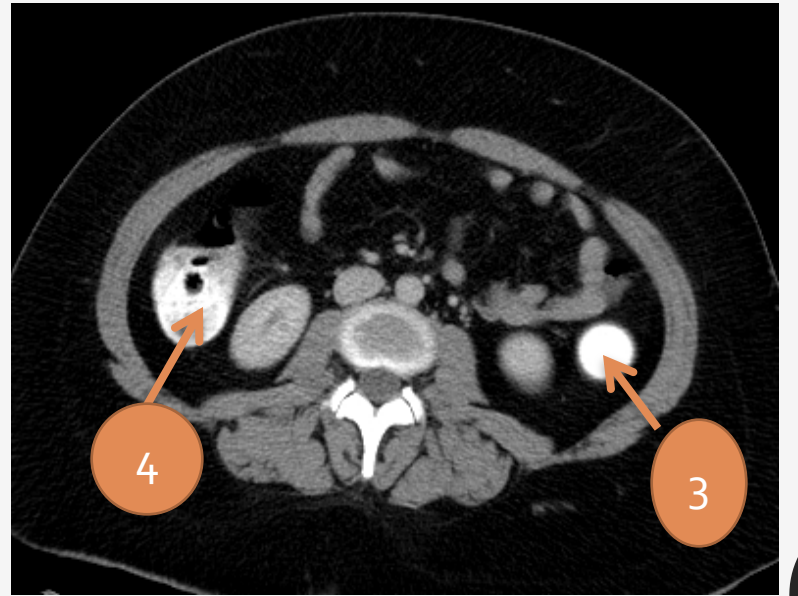
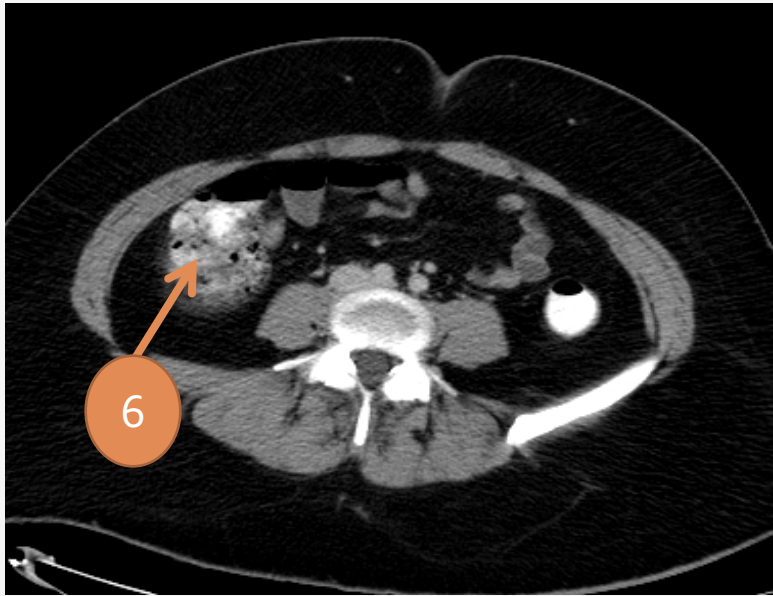
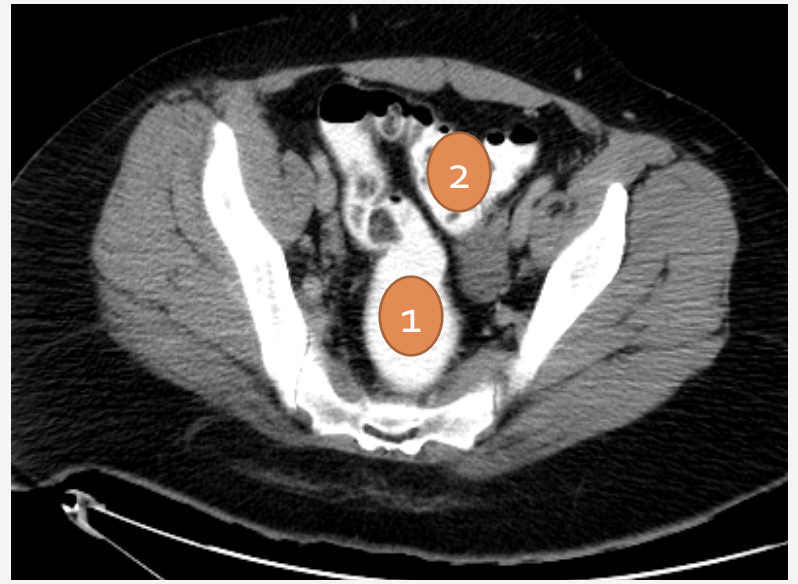
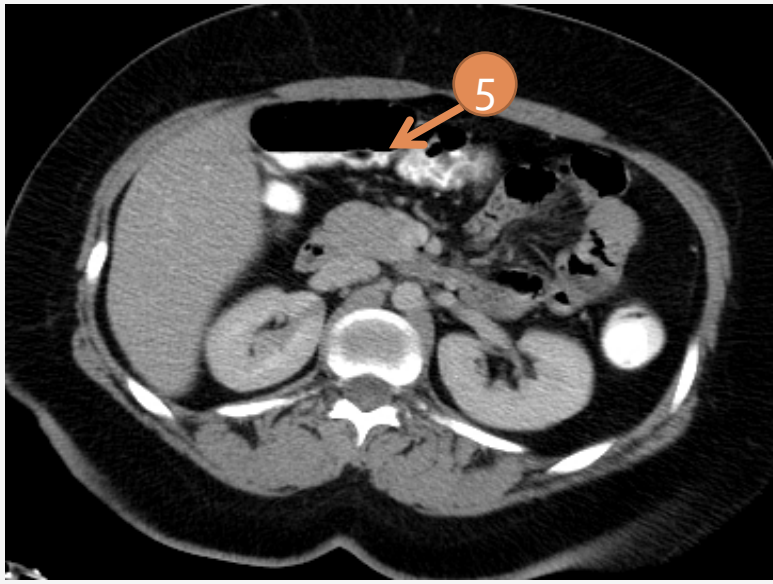






1. Descending colon
2. Splenic flexure
3. Hepatic flexure
4. Ascending colon
5. cecum
6. Sigmoid colon





1- Rectum

2-Sigmoid colon

3-Descending colon

4-Ascending colon

5-Transverse colon

6-Cecum

# Thank you

