

OSPE Revision

Endocrine Block

Dr. Shimaa Mahmoud

Pituitary Gland

A- Hypophyseal fossa.

B- Sella turcica

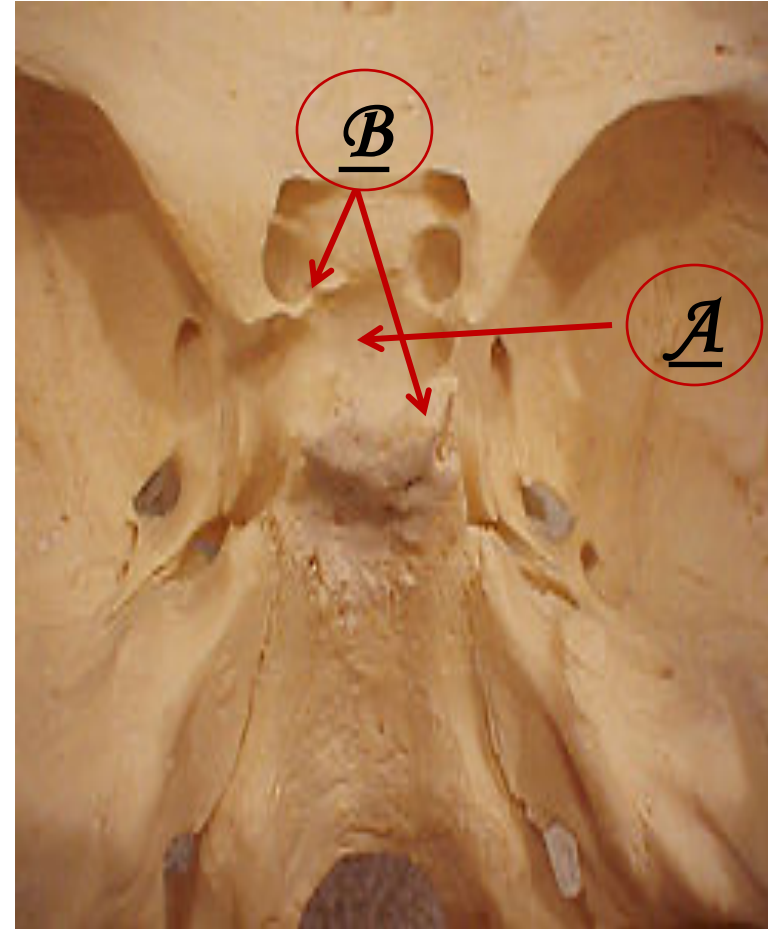
Common question in OSPE:

1- Identify the marked area "A"

2- Identify the structure related to this area
"pituitary gland"

3- Mention the anterior or posterior or superior or inferior or lateral relations to this structure

4- Blood supply of this structure



Relations Of Pituitary Gland

- 1- Optic Chiasma (Anteriorly).
- 2- Mamillary Bodies(Posteriorly).
- 3- Diaphragma sellae (superior)
- 4- Sphenoidal Air Sinuses (Inferior)
- 5- Cavernous Sinuses (Lateral) .

Blood supply of pituitary gland

- 1- Superior hypophyseal artery.
- 2-inferior hypophyseal artery.
 - Both are branches of internal carotid artery
- 3- Hypophyseal veins drain into Cavernous Sinuses

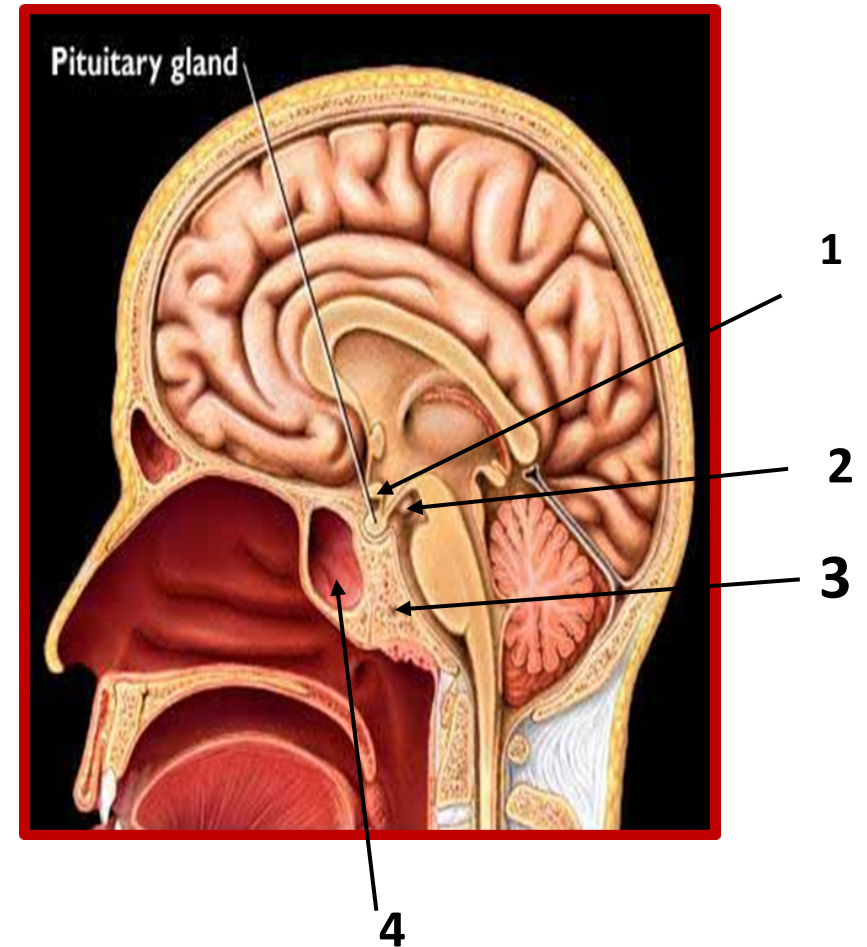
The question will be only Identify the marked area:

1- Optic Chiasma

2- Mamillary Bodies

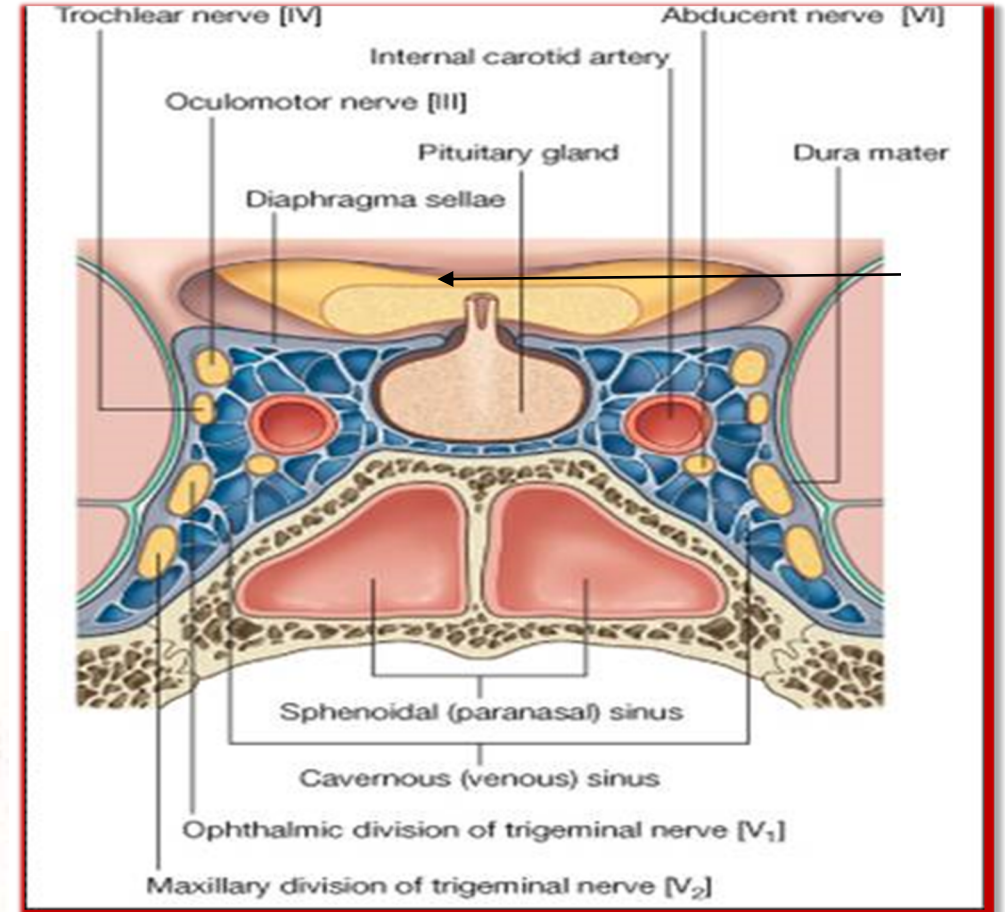
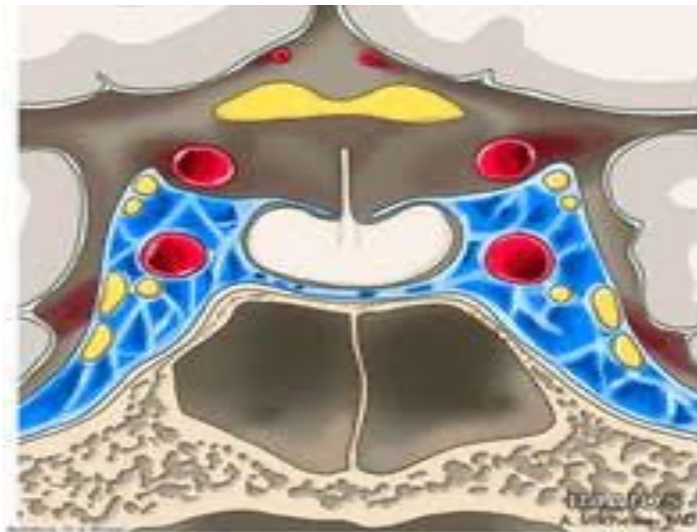
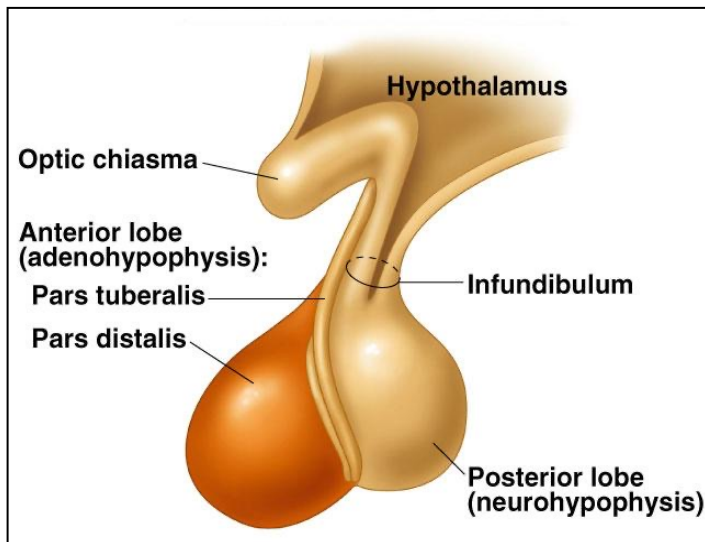
3- Body Of Sphenoid

4-Sphenoidal Air Sinus



Identify :

- 1- Pituitary gland.
- 2- Diaphragma sellae
- 3-Sphenoidal air sinuses
- 4-Cavernous sinuses (list its contents and structures in the lateral wall)
- 5- pituitary stalk(infundibulum)



Thyroid Gland

The thyroid gland question is very clear, only picture for thyroid and ask to identify a part of the gland and better to say:

- Right lobe of thyroid gland
- Left lobe of thyroid gland
- Isthmus of thyroid gland
- Pyramidal lobe of thyroid gland

Then ask one question of :

- Relations of this structure (Anterolateral, posterior or medial)
- Blood supply of this structure (**The artery and its origin**)
- Sometimes level (extension)

Example

Q: Identify the marked area A

A- Left lobe of thyroid gland

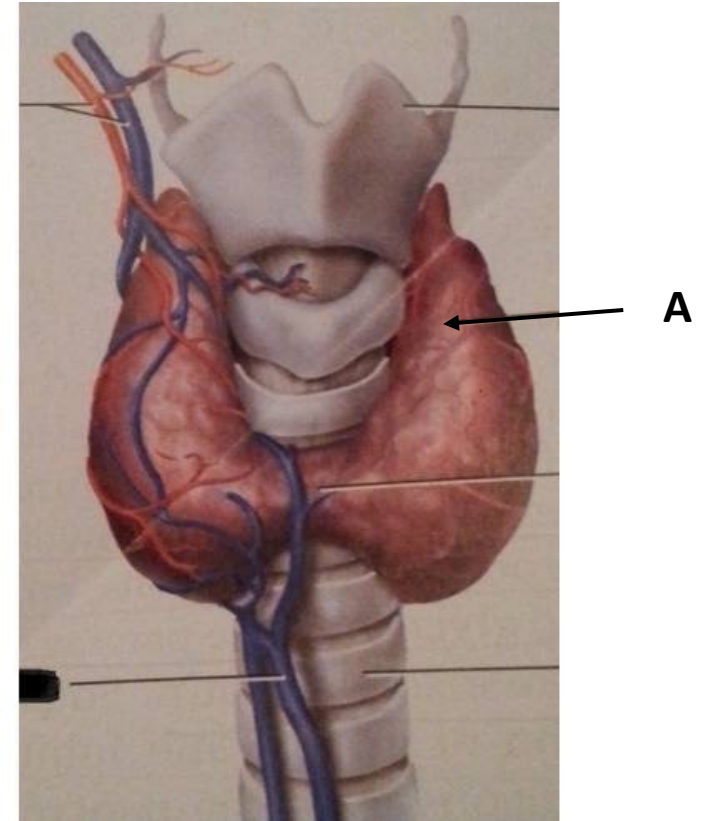
Q: Mention the anterolateral relations of this structure

(sometimes asking question indirect as what are the muscles or tubes or nerves related to this structure)

Q: Mention the arterial supply of structure A and its origin

Q: Mention the venous drainage of structure A

Q: Mention the extension of structure A (Apex till oblique line of the thyroid cartilage; its base lies at the 4th or 5th tracheal ring).



RELATIONS OF THE THYROID

Anterolaterally: (4 S)

1. Sternothyroid
2. Sternohyoid
3. Superior belly of omohyoid
4. Sternomastoid

Posteriorly:

Carotid sheath & its contents.

posterior border is related to the superior & inferior Parathyroid glands.

Medially:

Above:

Larynx & pharynx .

Below:

Trachea & esophagus.

(Recurrent laryngeal nerve in between).

-Cricothyroid muscle & external laryngeal nerve

Blood supply of thyroid

Arterial supply

1-Superior thyroid artery: From the external carotid artery

2-Inferior thyroid artery: From the thyrocervical trunk of 1st part of subclavian artery

3- Thyroid ima artery: from aortic arch or from brachiocephalic artery.

Venous drainage

-Superior thyroid vein & Middle thyroid vein : internal jugular vein

- Inferior thyroid vein : left brachiocephalic vein

Adrenal Gland

The question will be:

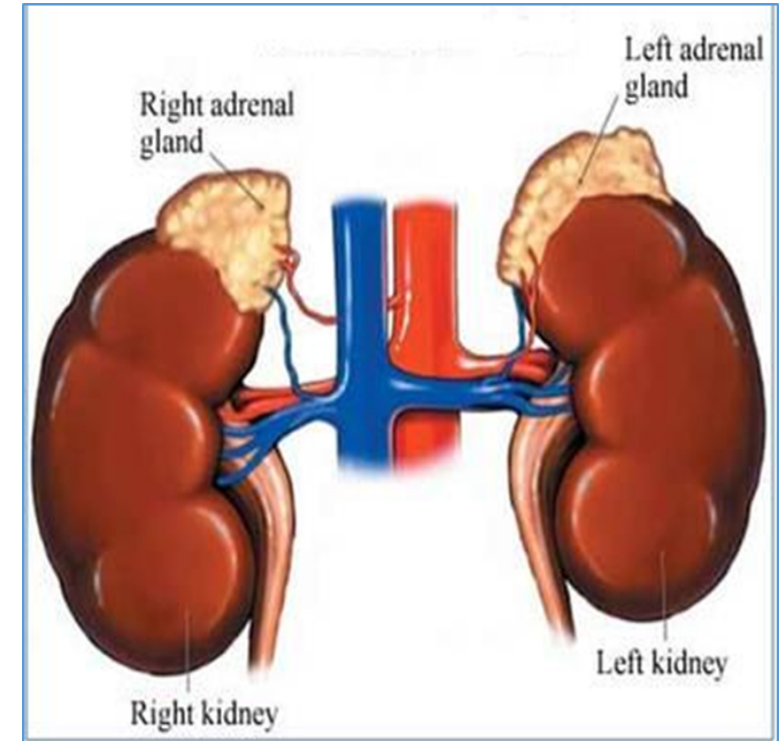
Q: Identify one of the two suprarenal (adrenal) glands and you have to write right or left

Then

Q: Mention the anterior or posterior relations of this structure
OR

Q: Mention the blood supply of this structure

Q: Mention the level (T12)



Adrenal Gland

Relations

- Right adrenal gland

Anterior: right lobe of the liver.
inferior vena cava.

Posterior: diaphragm

Medial :Celiac plexus and ganglia

- left adrenal gland

Anterior: Pancreas, lesser sac,
stomach

Posterior: diaphragm

Blood supply

Arterial

- Superior suprarenal from Inferior phrenic
- Middle suprarenal from Abdominal Aorta
- Inferior suprarenal from Renal artery.

Venous

Suprarenal vein: drains into Inferior vena cava **on the right** & Renal vein **on the left**

- * Questions of the last year OSPE were one about pituitary gland position on the skull and its relations and the other was about relations of thyroid gland with identify the lobe and arterial supply with its origin.
- * Please read the question and focus on what we need exactly
- * If disturbed in one answer or forget it write all what you know please
- * If you need any question till the exam please contact me anytime

**THANK YOU
GOOD LUCK**

DR. SHIMAA

Email: shimaamahmoud81@gmail.com

T: 0595356742