



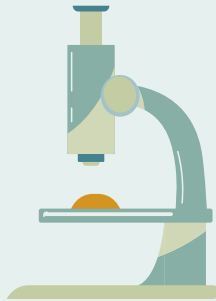
MED439  
KING SAUD UNIVERSITY

Revised & Approved



Bessam Alasmari  
Rania Almutiri

جامعة  
الملك سعود  
King Saud University



Histology Team  
439

# Endocrine OSPE

Color index:

Slides

Important

Doctors notes

Extra

[Editing file](#)

# Important notes:

- According to the females doctor, you'll be asked about Identifying and features
- Write the full name, Write the full name, Write the full name if you use shortcuts, literally I'm gonna punch you in the face
- You should study the original file first, this file is for revision only and it's made by students

★ **Q1/ Identify the structure?**

Thyroid gland

**Q2/ What is the type of Epithelium in this structure?**

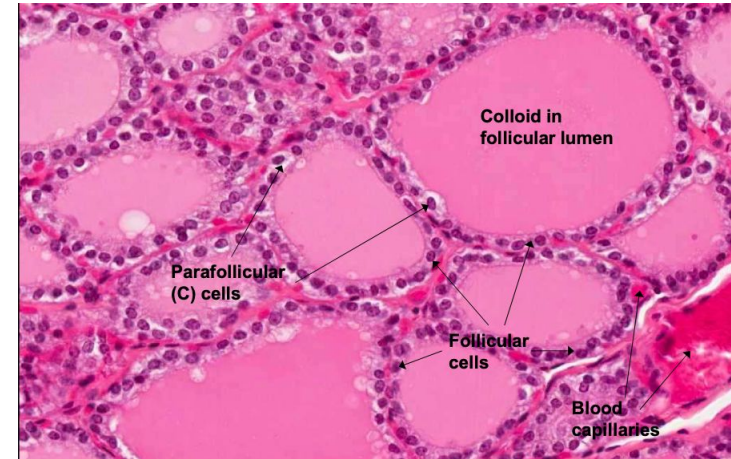
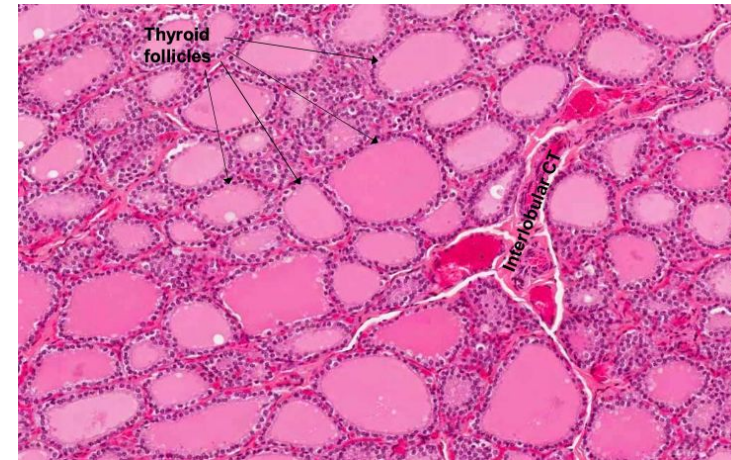
Simple cuboidal epithelium

**Q3/ What are the types of cells found in this structure?**

1. **Follicular cells:** are the majority of the cells and have rounded nuclei and basophilic cytoplasm.
2. **Parafollicular cells:** also called clear or C cells. They are the minority of the cells but are larger and paler than the follicular cells.

★ **Q4/ What are the features of the structure?**

1. Thyroid follicles.
2. Colloid.
3. Simple cuboidal epithelium.
4. Follicular cells.
5. Parafollicular or C cells.
6. Blood capillaries.



★ **Q1/ Identify the structure?**

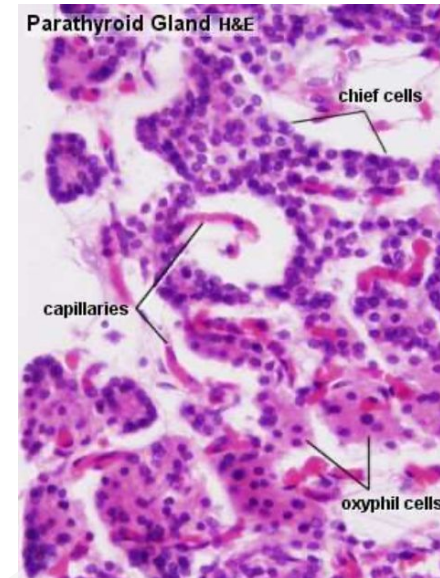
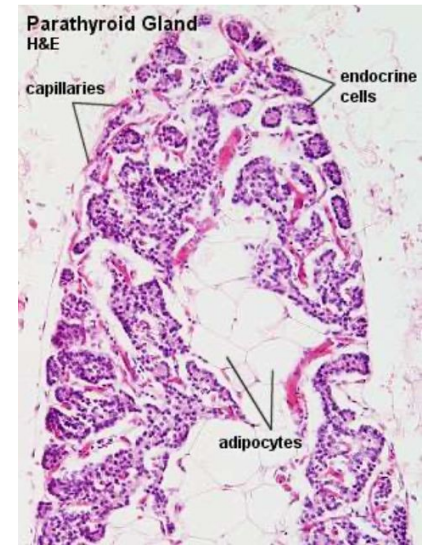
Parathyroid gland

**Q2/ What are the types of cells found in this structure?**

1. **Chief cells:** small size, more numerous, slightly eosinophilic
2. **Oxyphil cells:** large size, less numerous, deep eosinophilic

★ **Q3/ What are the features of the structure?**

1. Thin capsule and septa.
2. Chief cells.
3. Oxyphil cells.
4. Fat cells.
5. Blood capillaries.





★ Q1/ Identify the structure?

Adrenal gland

Q2/ What are the parts (zones) in this structure?

1. **Zona glomerulosa:** immediately below the capsule. Its cells are arranged in arches.
2. **Zona fasciculata:** the thickest layer. Its cells are arranged in longitudinal columns.
3. **Zona reticularis:** relatively thin and not sharply defined from the medulla. Its cells are arranged in anastomosing cords.

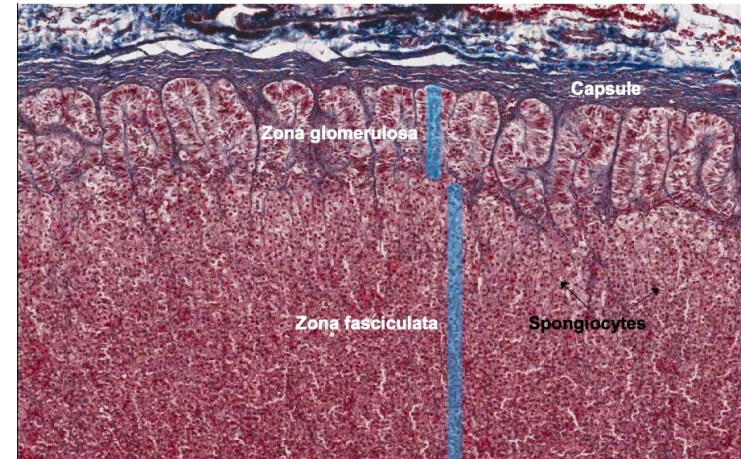
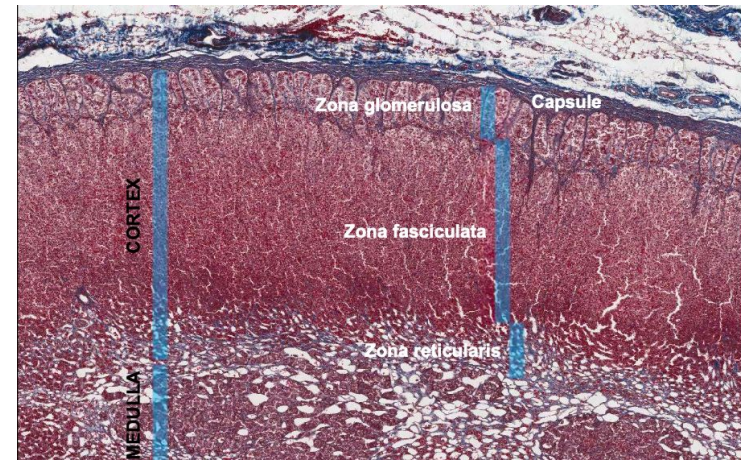
Q3/ What are the first two zones in this structure? →

**Zona glomerulosa:** its cells are columnar and form round or oval arches.

**Zona fasciculata:** its cells are polygonal and arranged in longitudinal straight columns.

★ Q4/ What are the features of the structure?

1. Thick capsule.
2. Thick outer cortex.
3. Thin central medulla.
4. Zona glomerulosa; arches of columnar cells.
5. Zona fasciculata; columns of polygonal cells (spongiocytes).
6. Zona reticularis; anastomosing cords of polygonal cells.



### Team leaders

- ✓ Mariam Alruhaimi
- ✓ Mohamed Albabtain

### Team members

Abdullah Alburikan  
Fayez AlTabbaa  
Mohammed Alhejji  
Nawaf Alshahrani  
Nawaf Alghamdi  
Yazeed Alomar

Afnan AlMohsen  
Joud Alarifi  
Maha Alqahtani  
Nourah Alklaib  
Rania Almutairi  
Shahad Alrasheed  
Sumo Abdulrahman

 [Histology439team@gmail.com](mailto:Histology439team@gmail.com)