

RADIOLOGY ANATOMY OF THE PITUITARY GLAND



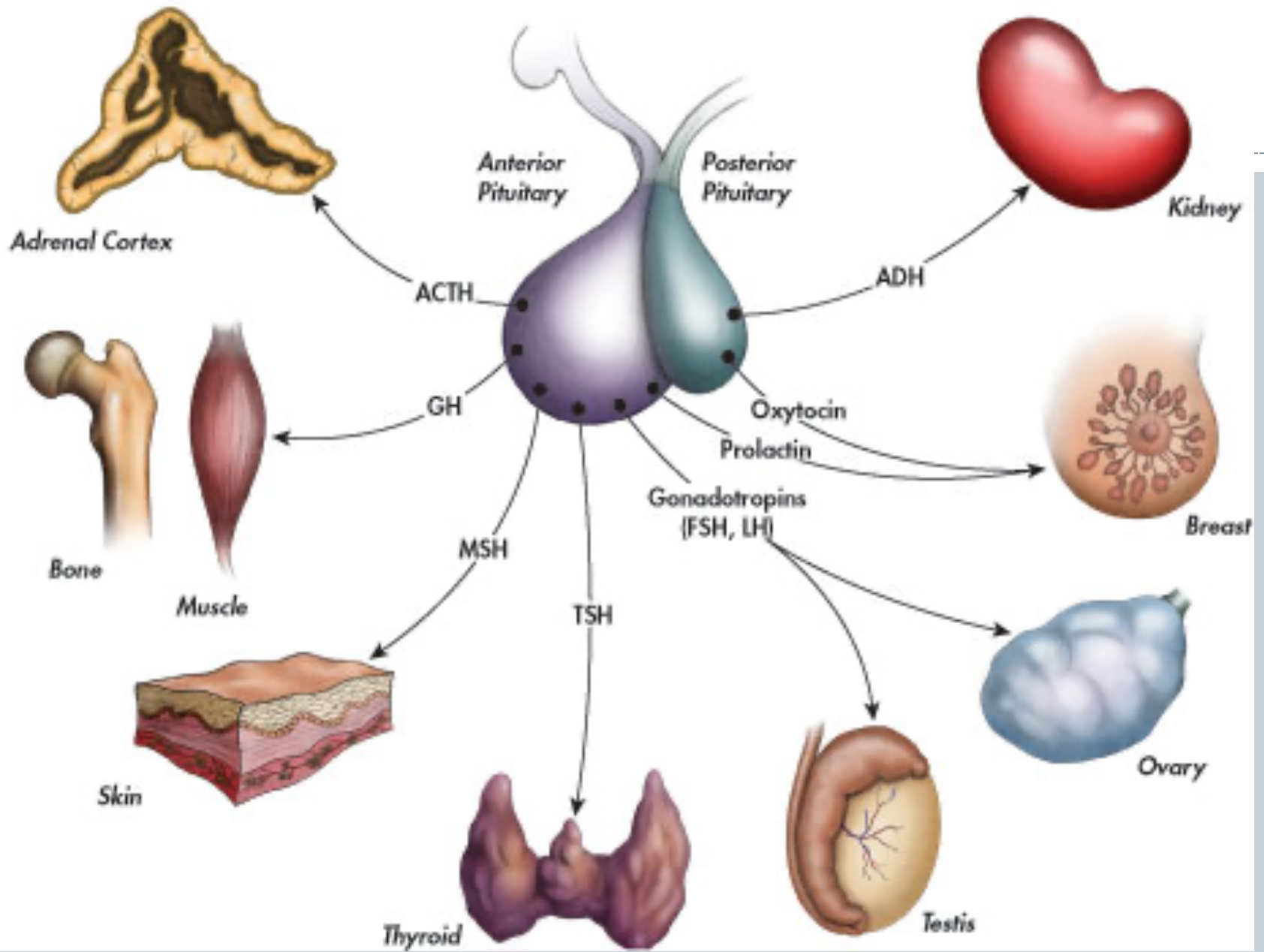
PRACTICAL(1)

RADIOLOGY

NORMAL PITUITARY GLAND



- ❖ The gland is composed of two parts:
 - Anterior lobe (adeno hypophysis)
 - Posterior lobe (neuro hypophysis)
- ❖ Normal size:
 - Weight: 0.5g
 - Height: 4-16 mm
 - Anterior posterior: 5-16 mm



INDICATIONS FOR IMAGING THE PITUITARY GLAND



❖ Hormonal dysfunction

- Cushing syndrome
- Growth abnormalities e.g. Growth hormone deficiency, acromegaly

❖ Visual abnormalities

❖ headache



❖ What is best modality to image the pituitary gland ?

- A. X ray
- B. CT scan
- C. MRI
- D. US
- E. Nuclear medicine



❖ What is best modality to image the pituitary gland ?

A. X ray

B. CT scan

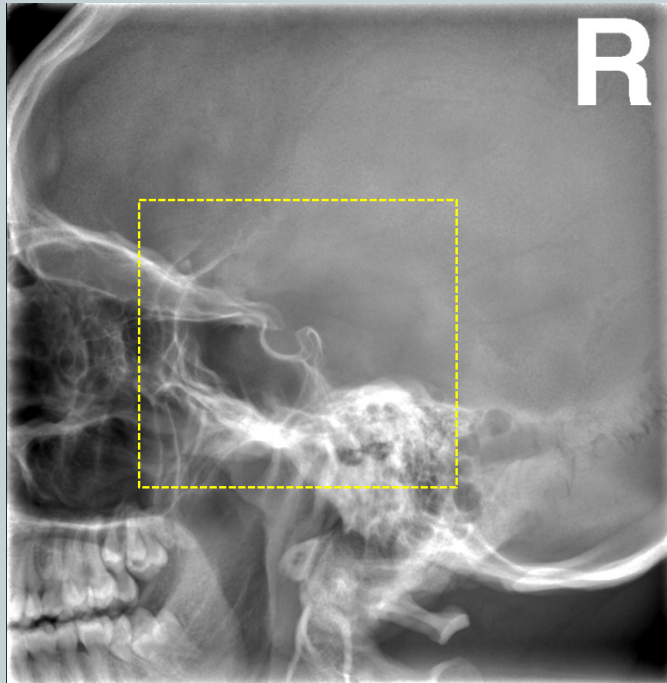
C. **MRI**

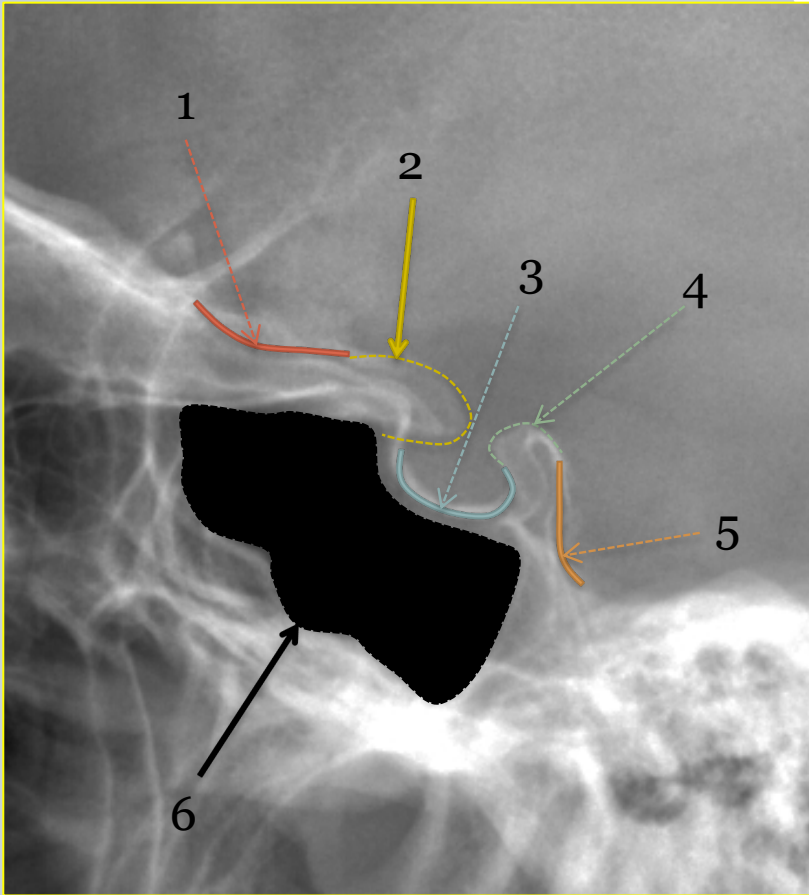
D. US

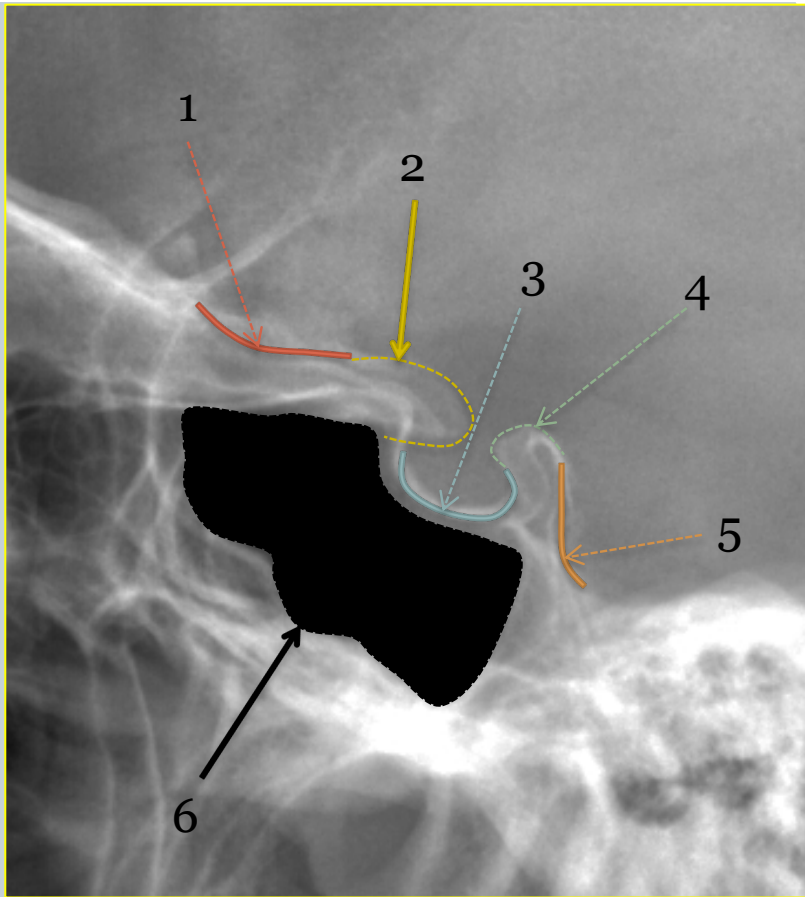
E. Nuclear medicine



XRAY





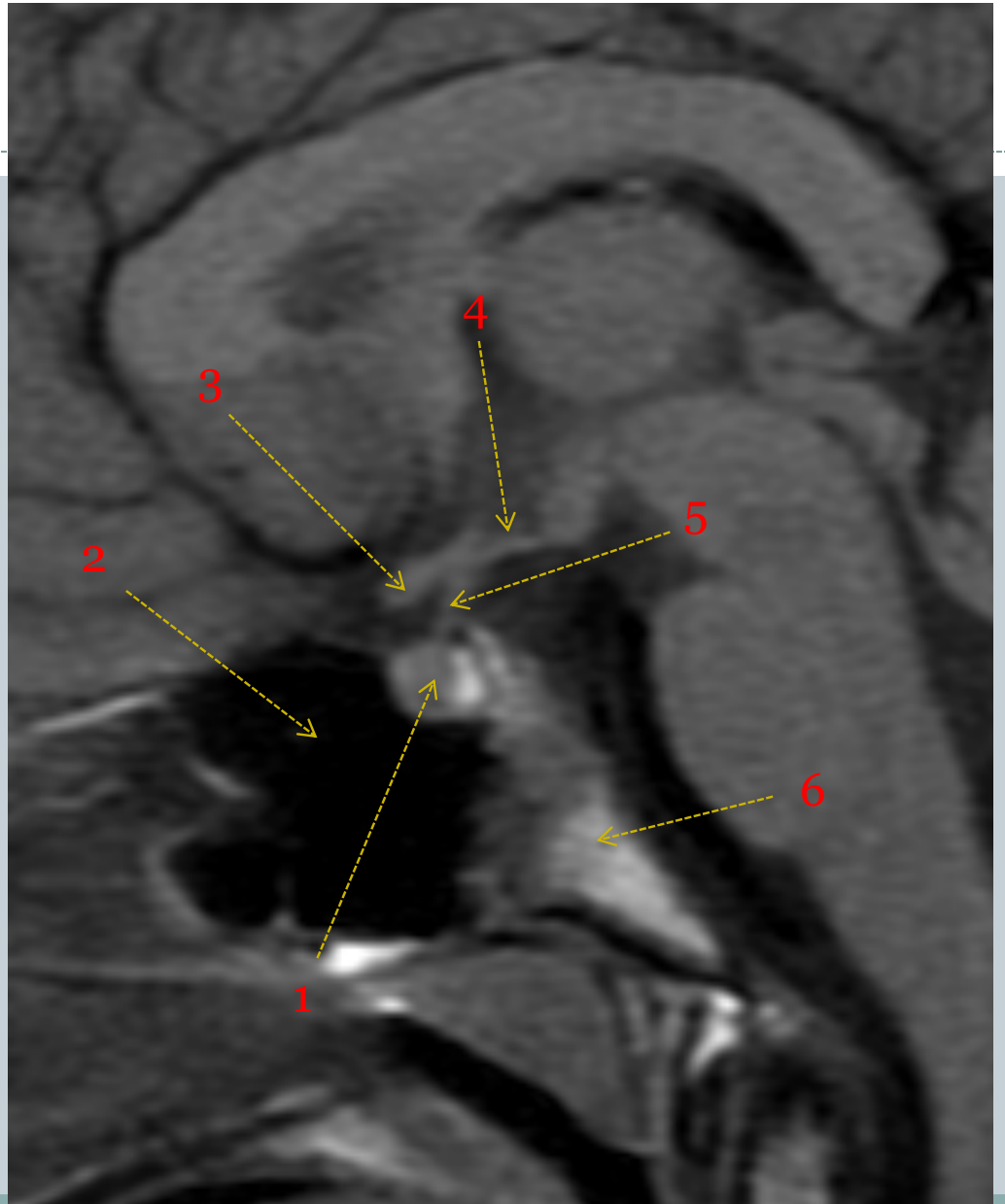


- 1-Optic sulcus**
2- Anterior clinoid process
3-Floor of sella turcica (Pituitary fossa)
4- Posterior clinoid process
5- Dorsum sella
6- Sphenoid sinus

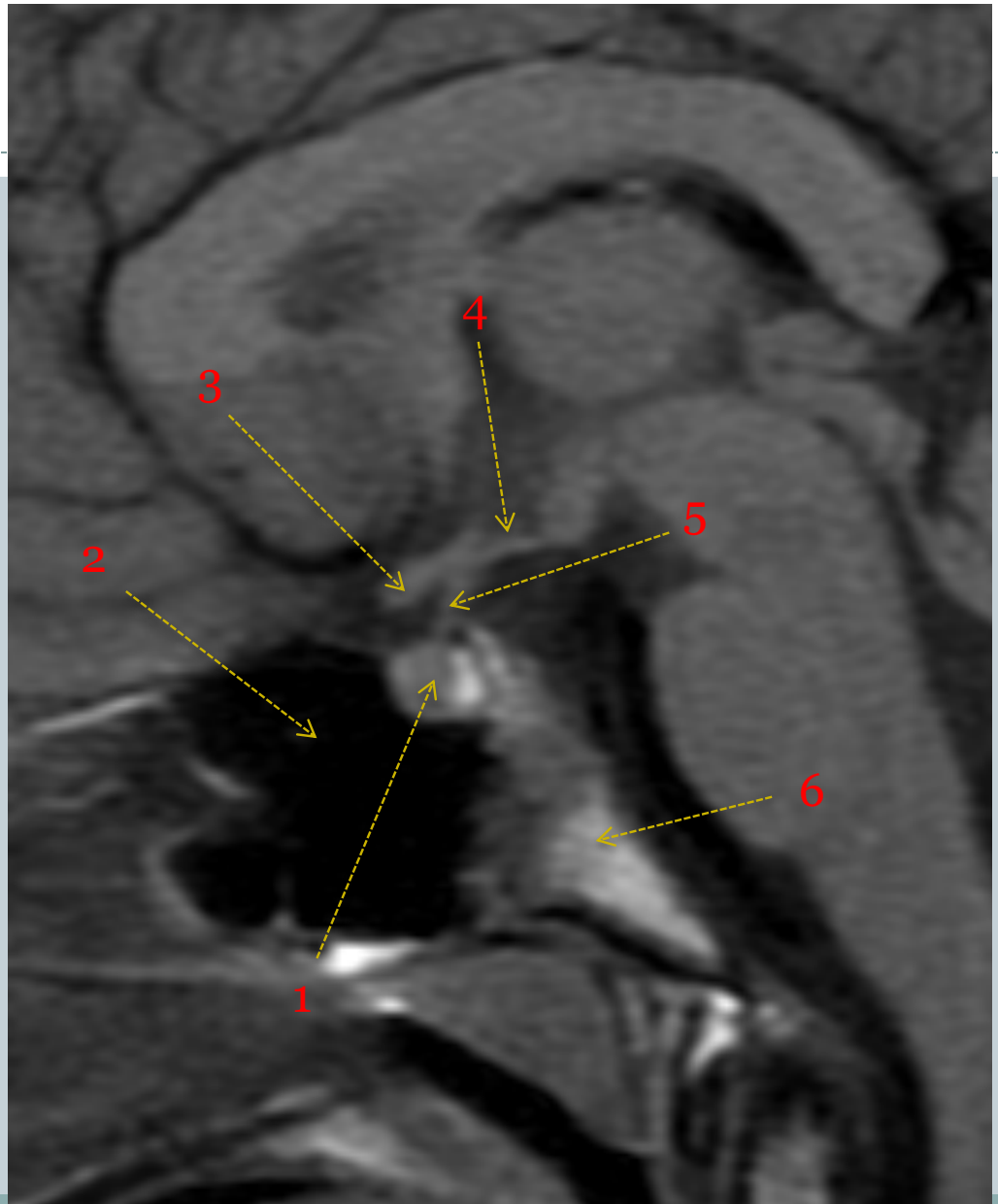




MRI

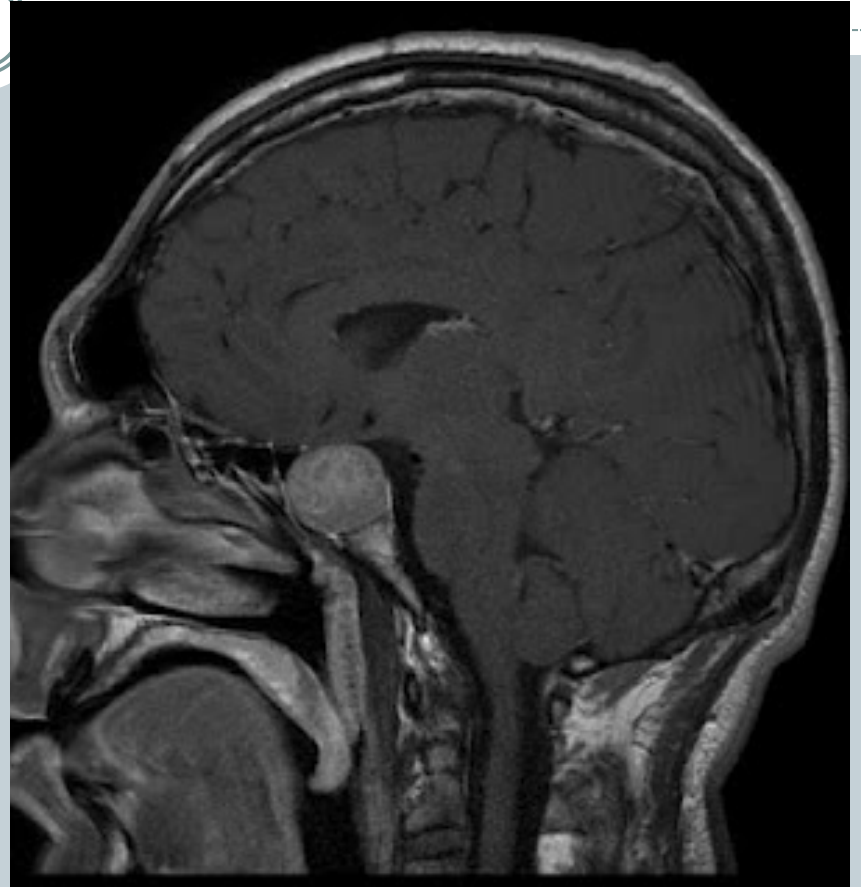


- 1- pituitary gland**
- 2- sphenoid sinus**
- 3- optic chiasm**
- 4- hypothalamus**
- 5- pituitary stalk**
- 6- clavius**

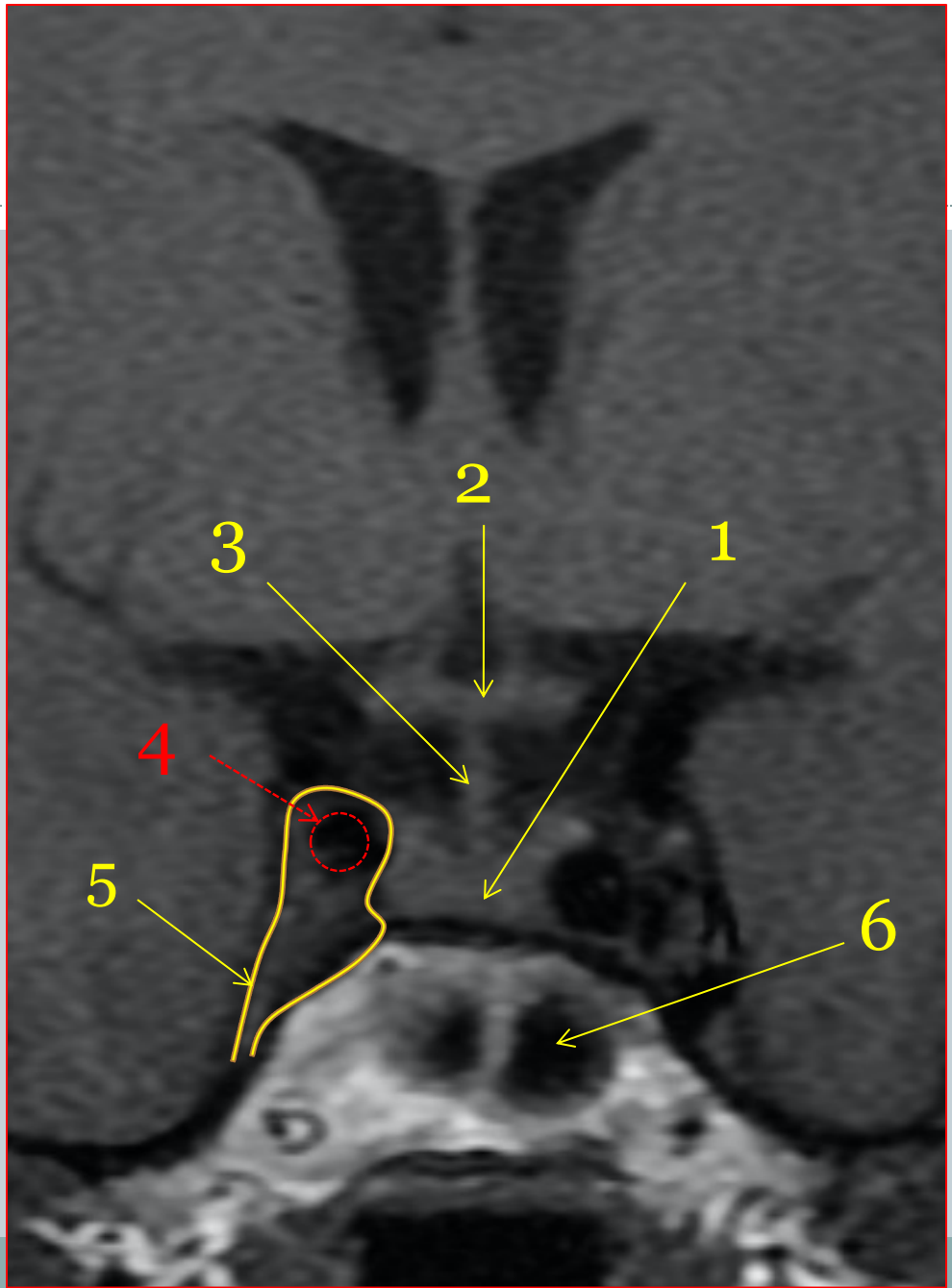
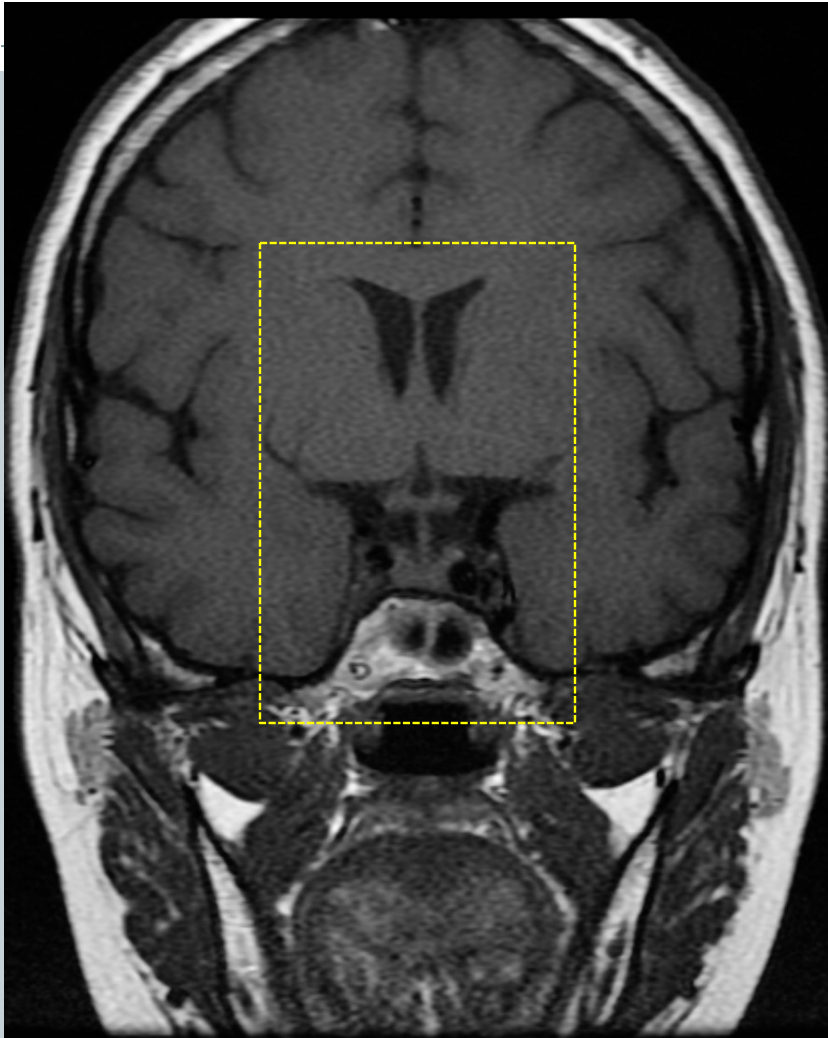


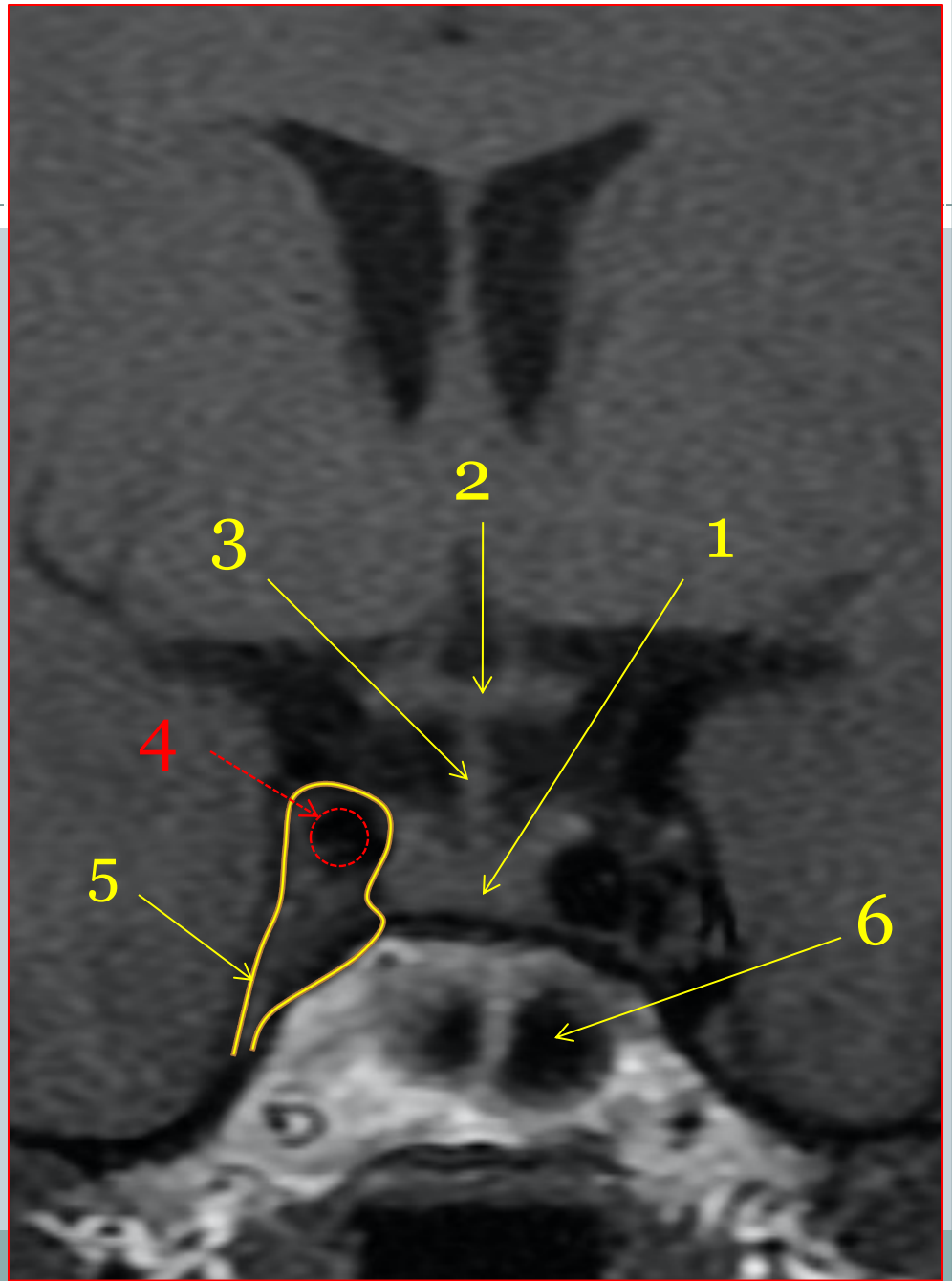
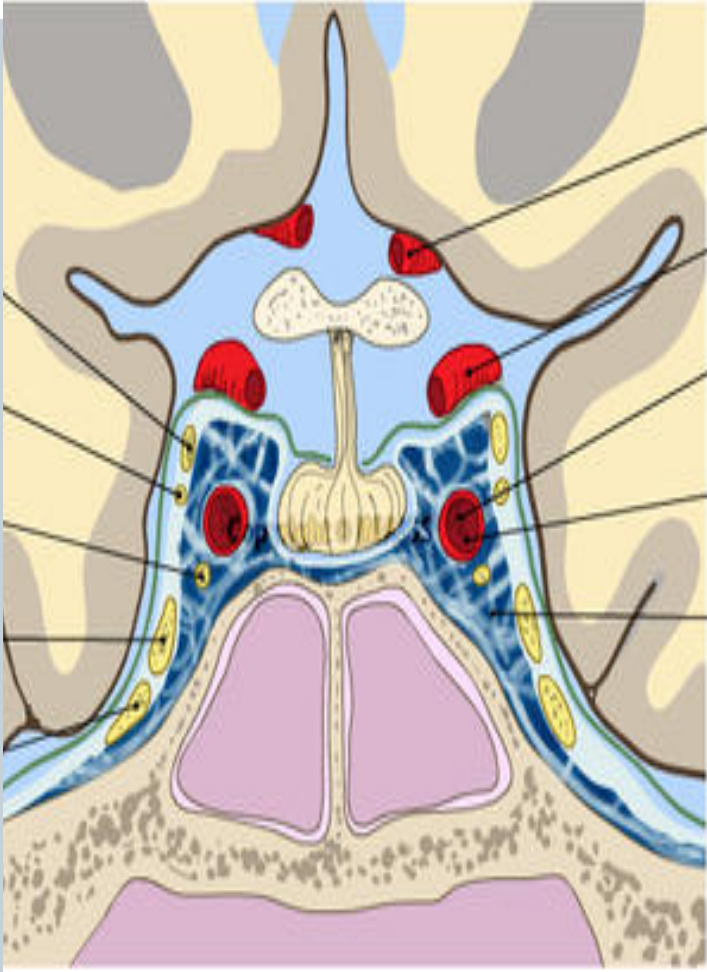


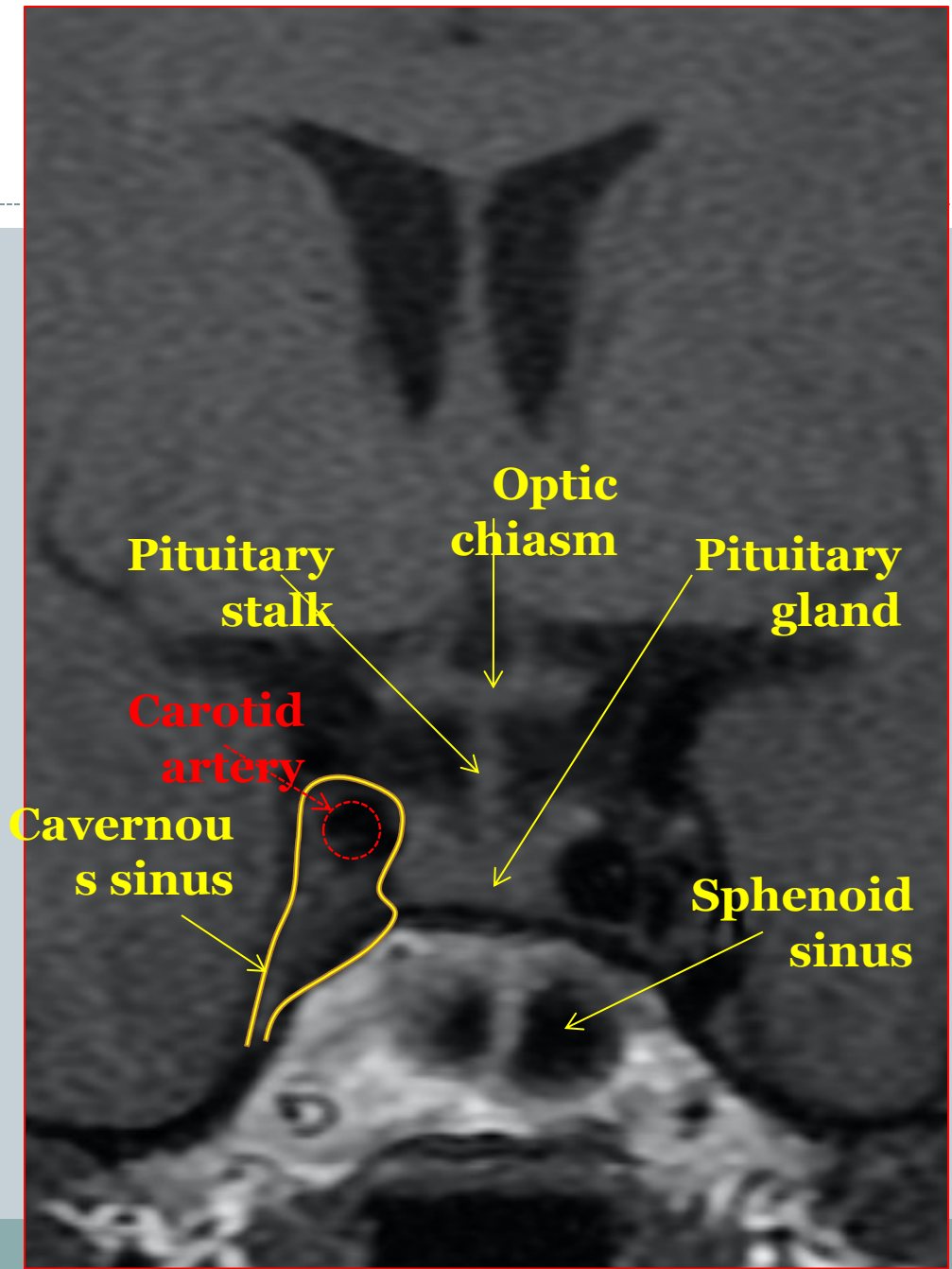
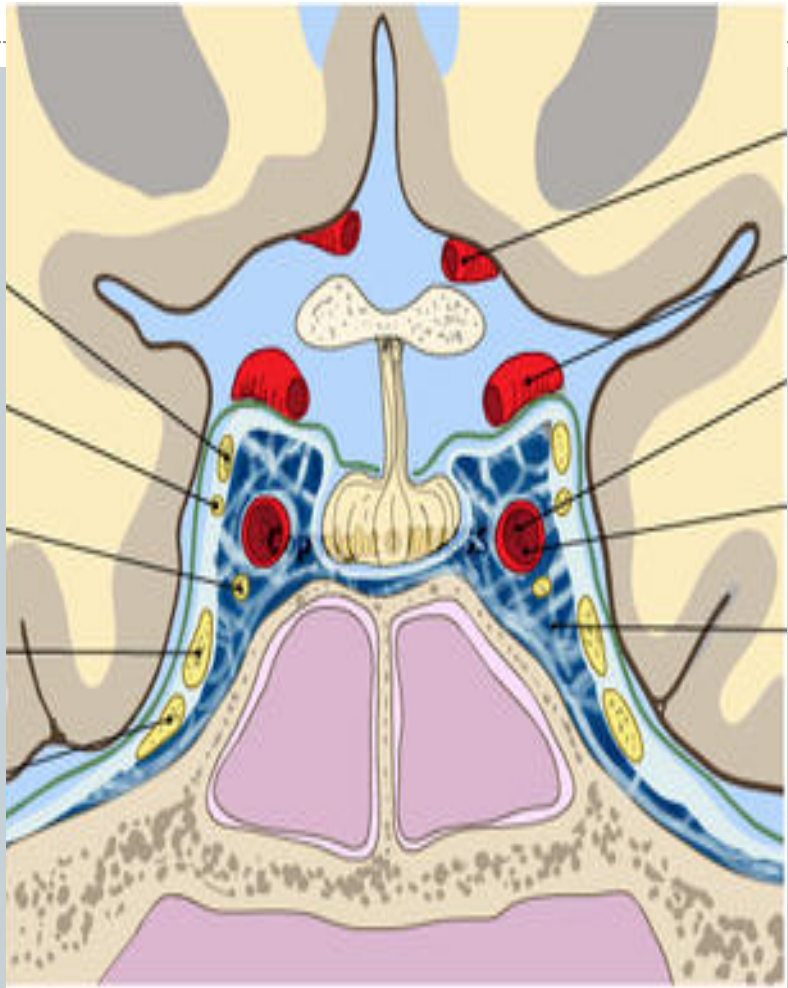
NORMAL

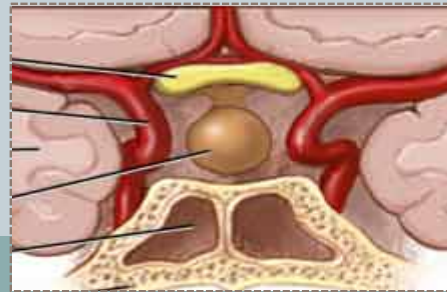
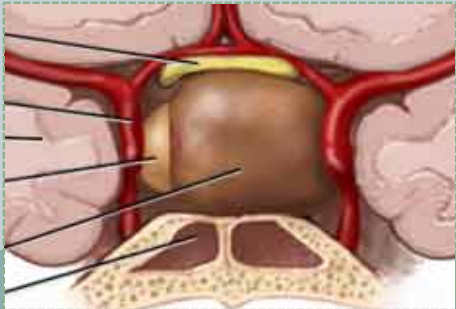
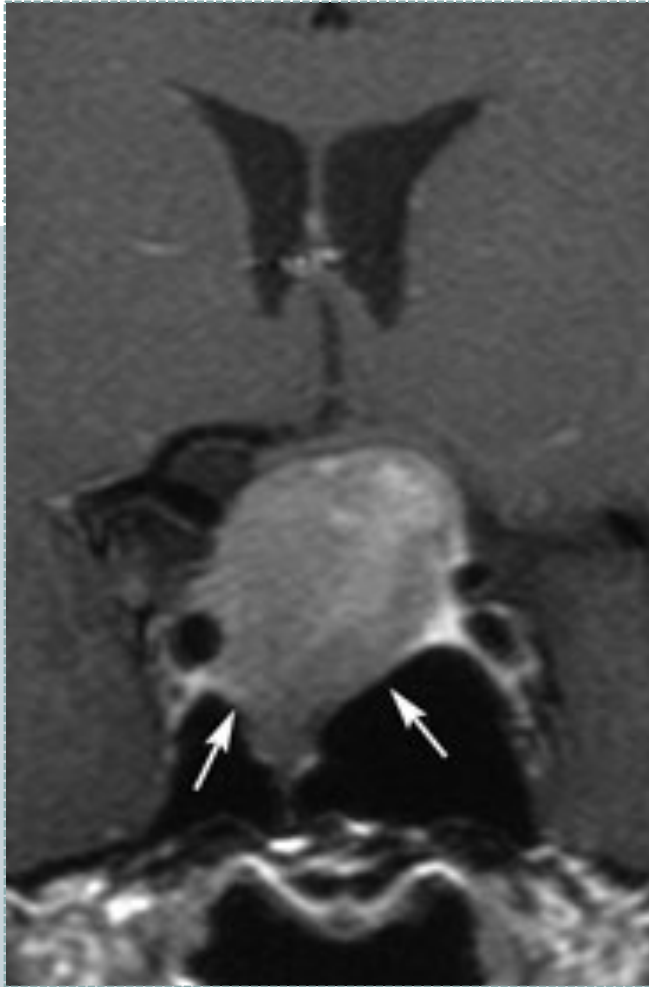


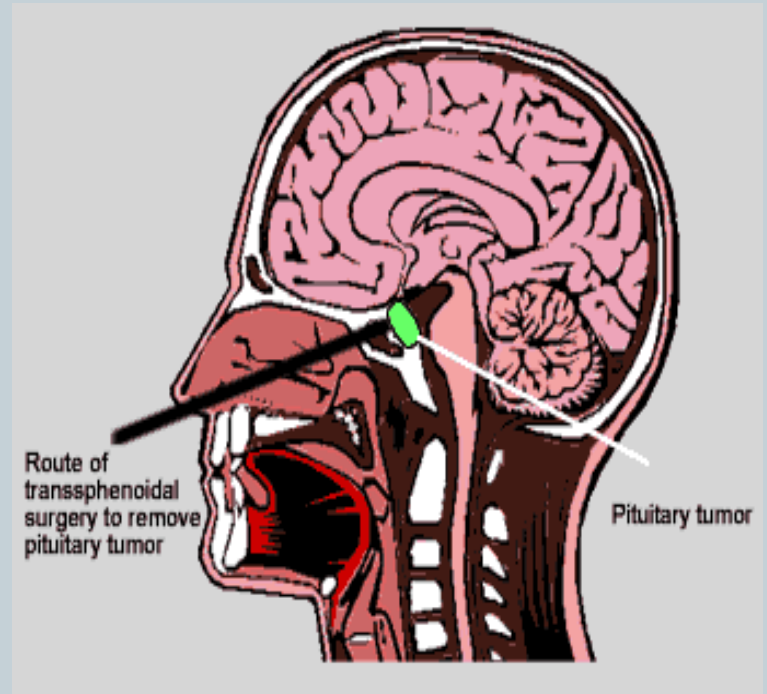
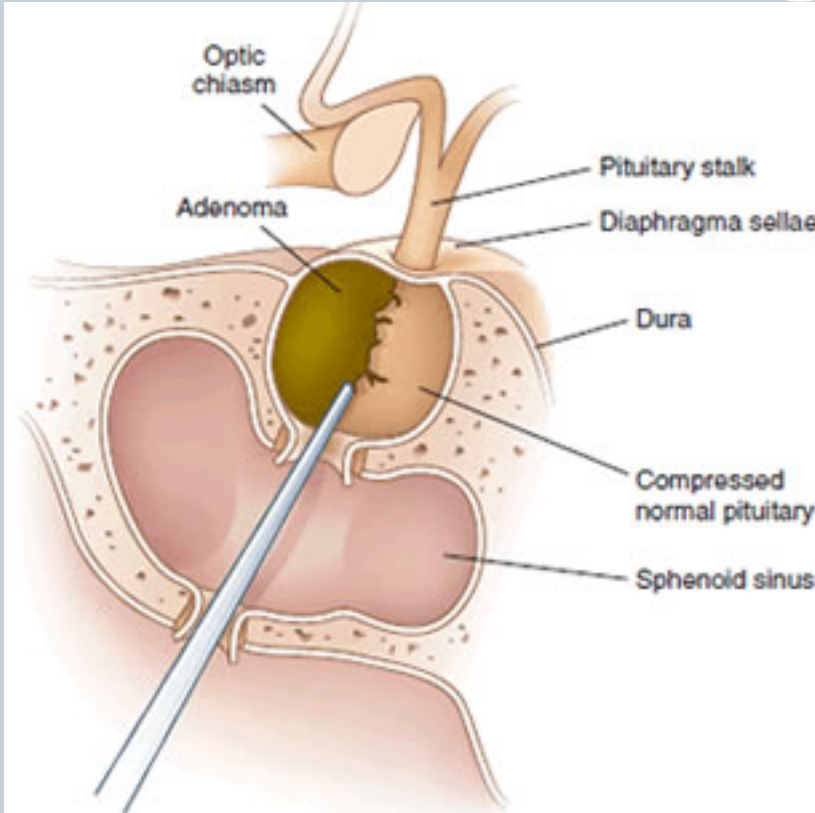
**PITUITARY
ADENOMA**















THE END