

Venous drainage of structure (B) is

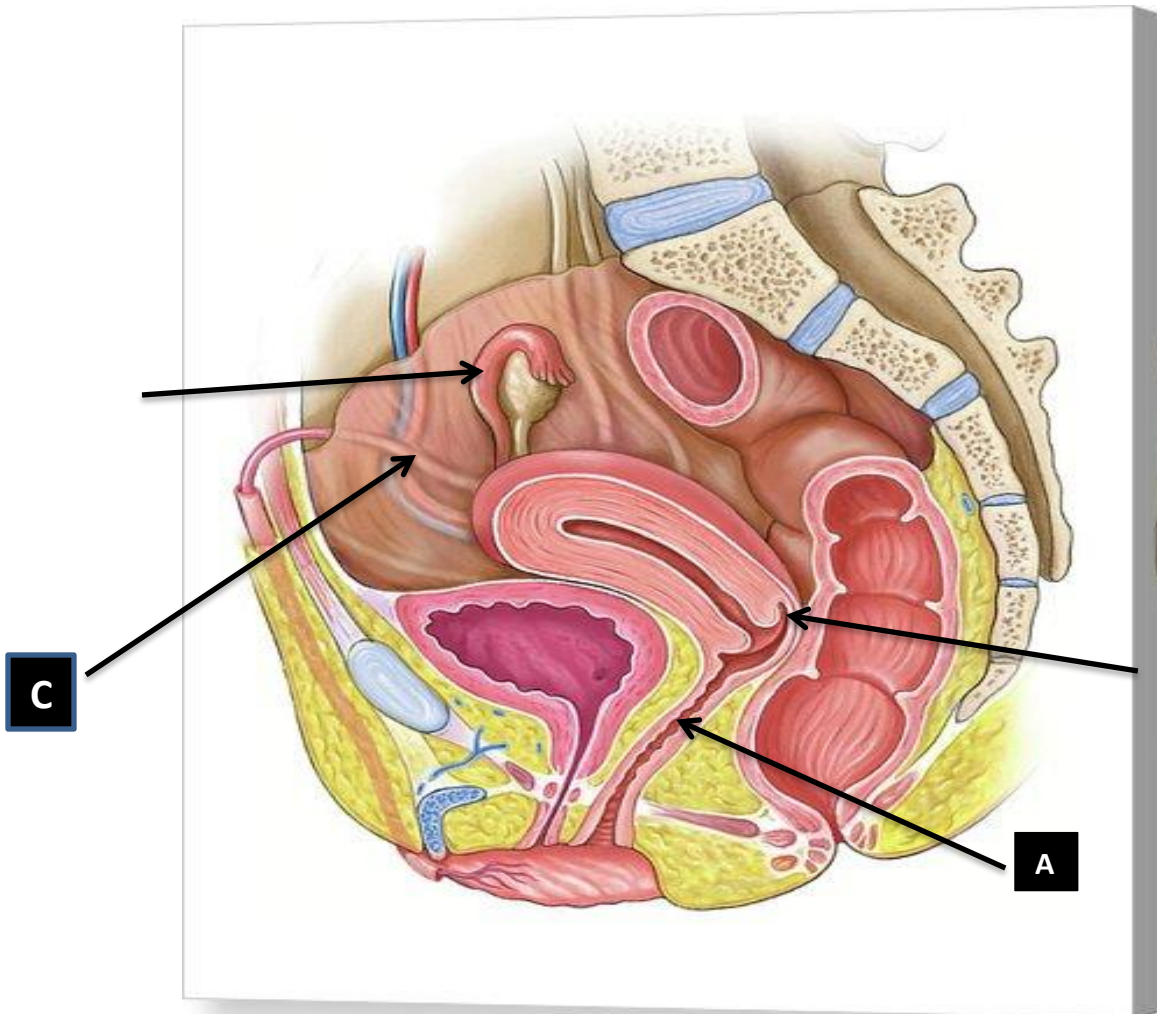
- Internal Iliac Vein
- Right Renal Vein
- Inferior Vena Cava

Marked area (C) is which prostatic lobe

- Median lobe
- Anterior lobe
- Posterior lobe
- Lateral lobe

Lateral relation of structure (C) is

- Piriformis muscle
- Levator ani muscle
- Psoas major muscle

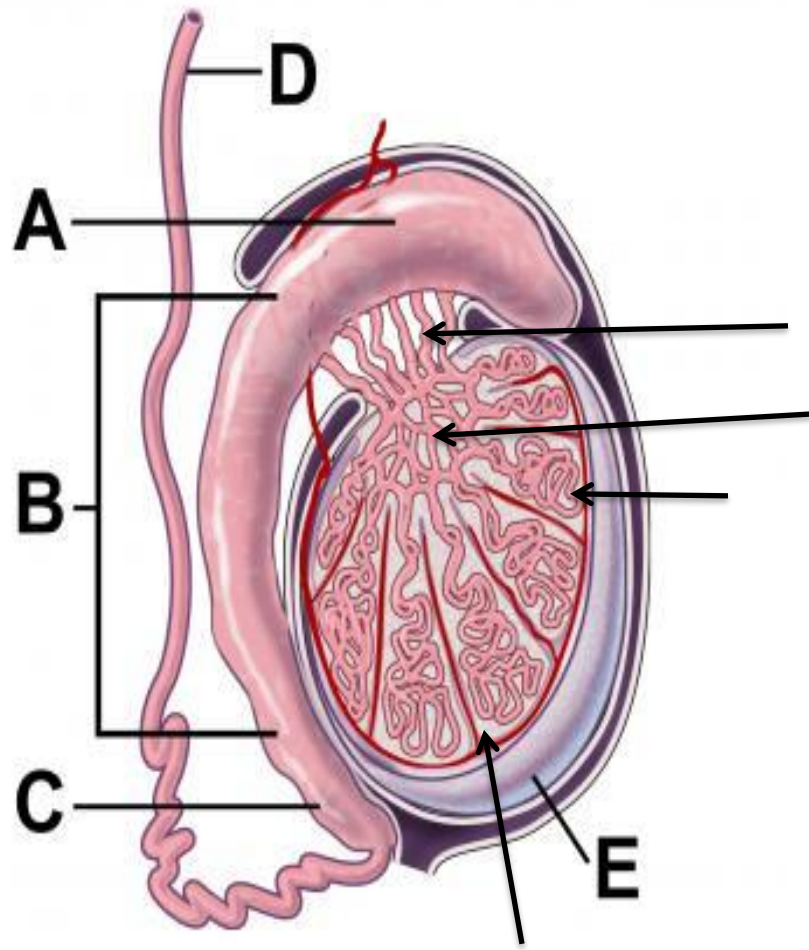


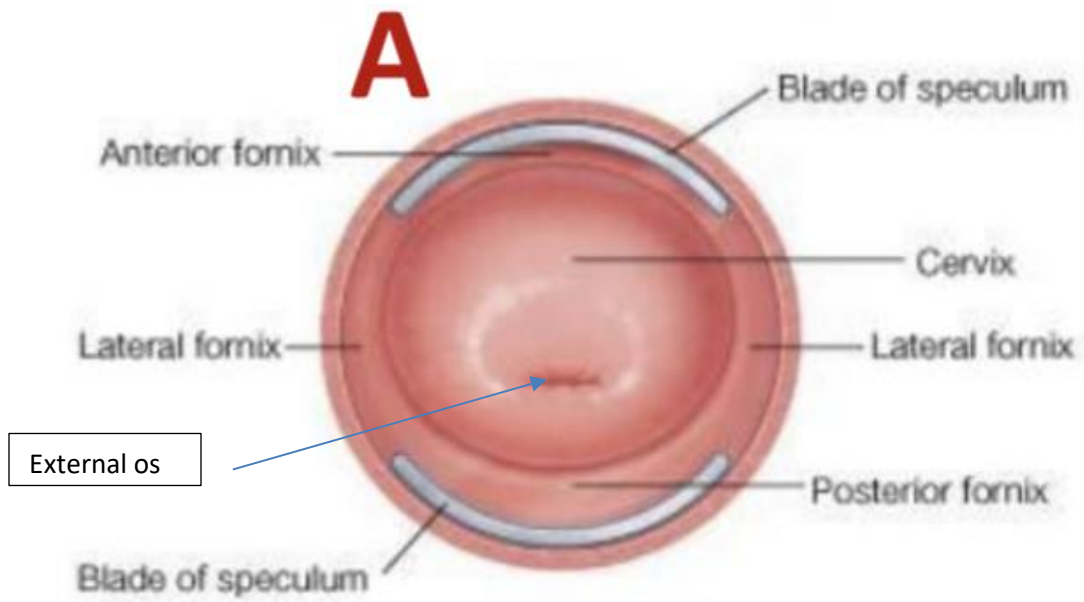
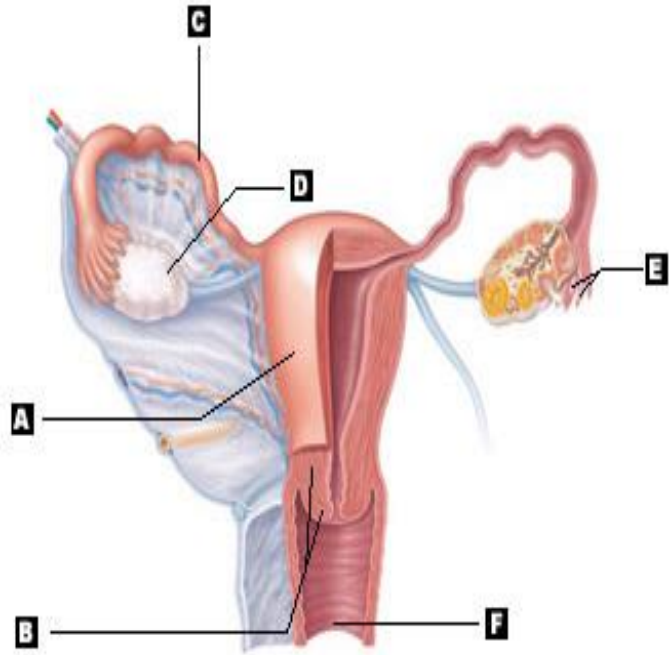
In the female reproductive system, structure [C] is named:

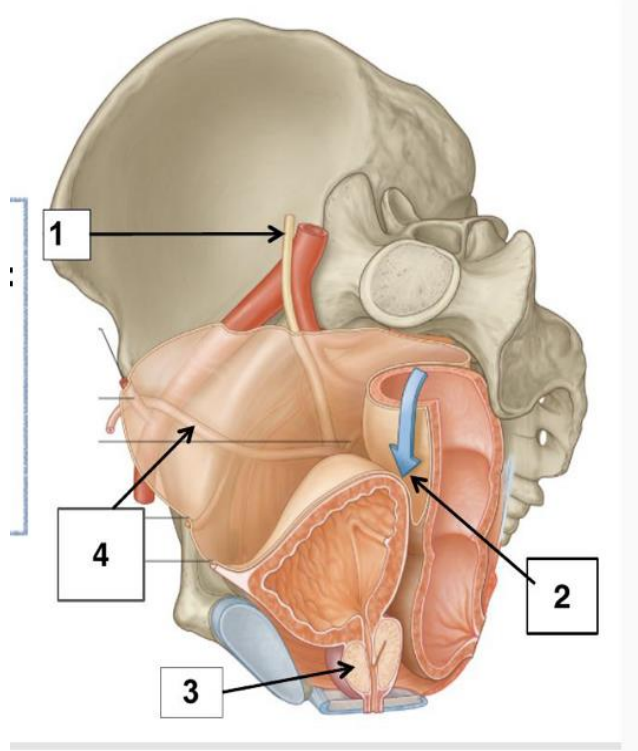
- a. Fundus of uterus.
- b. Mesovarium.
- c. Ligament of ovary.
- d. Round ligament.

Lateral relation of structure (A) is

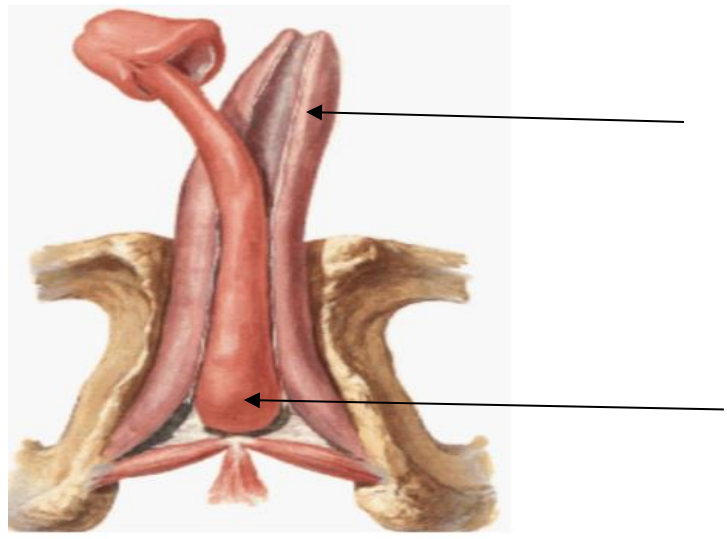
- a. Ureters
- b. Urinary bladder
- c. Rectum

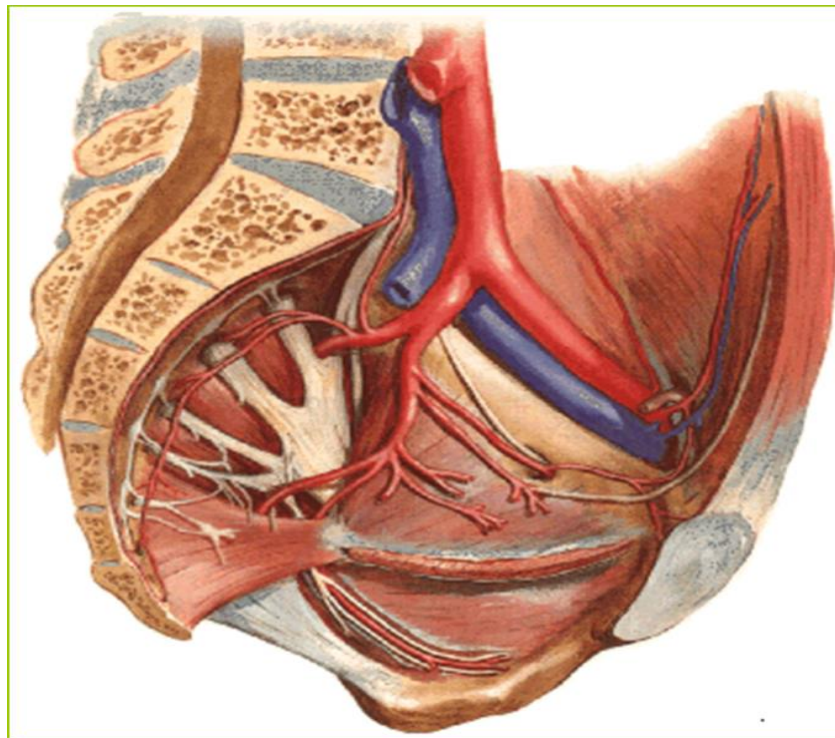
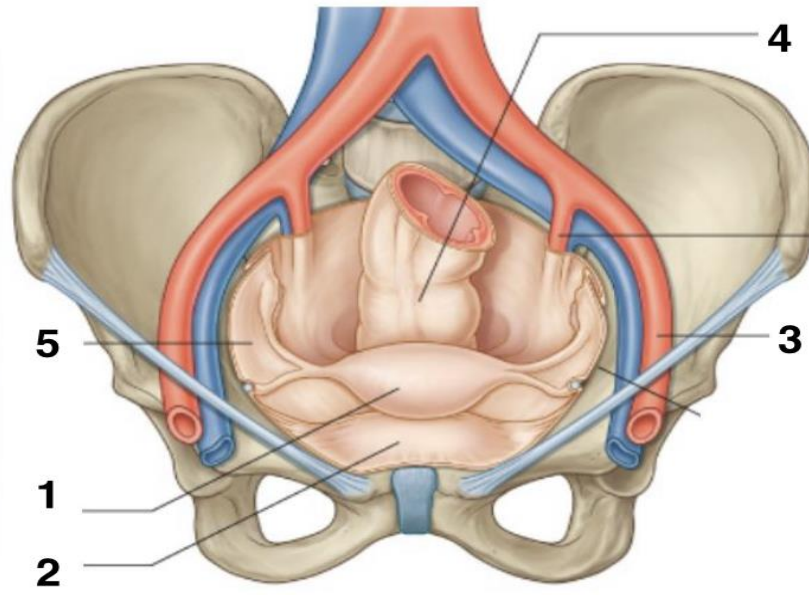


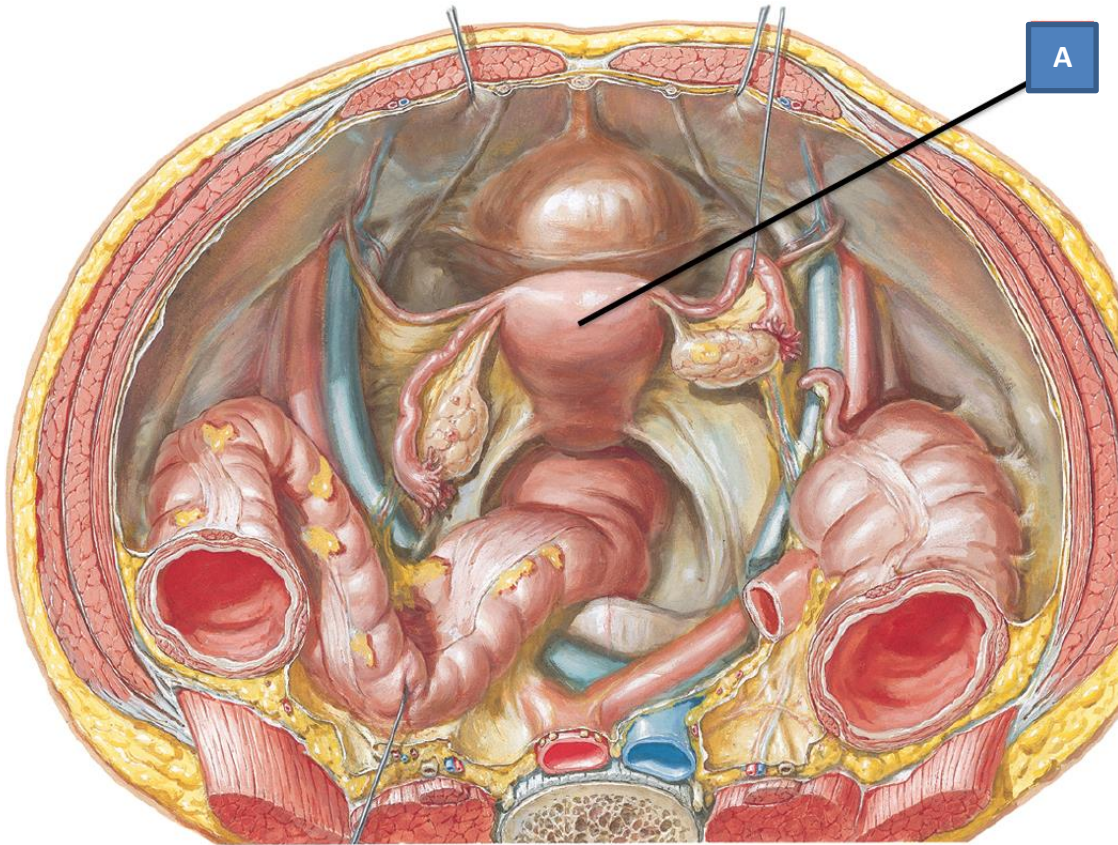




## Penis







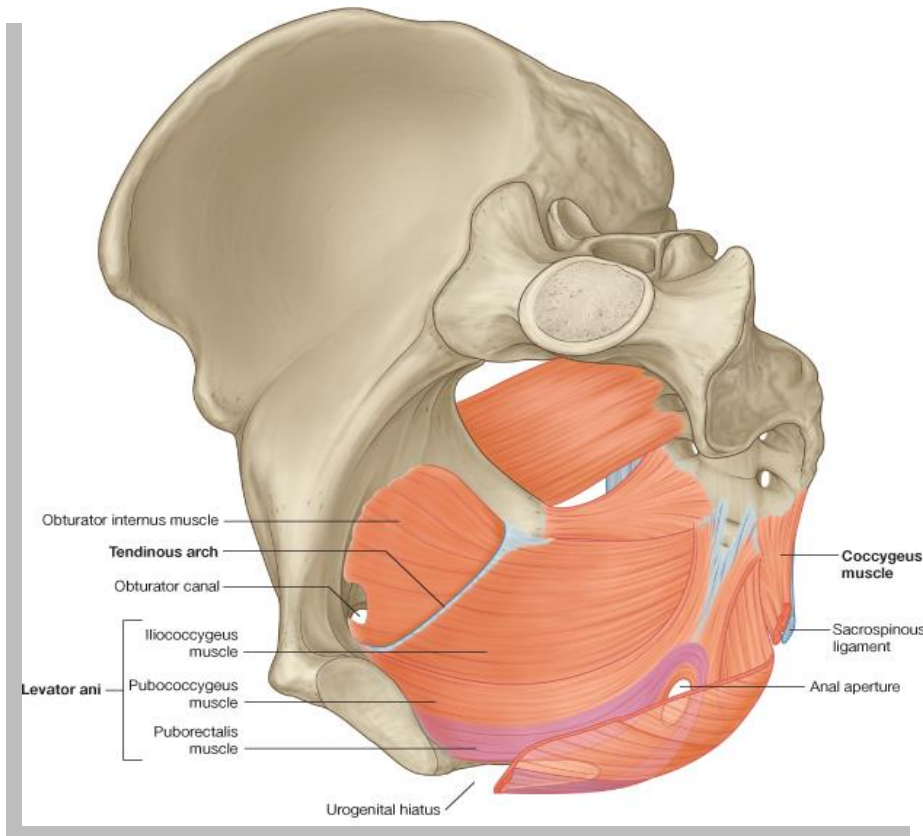
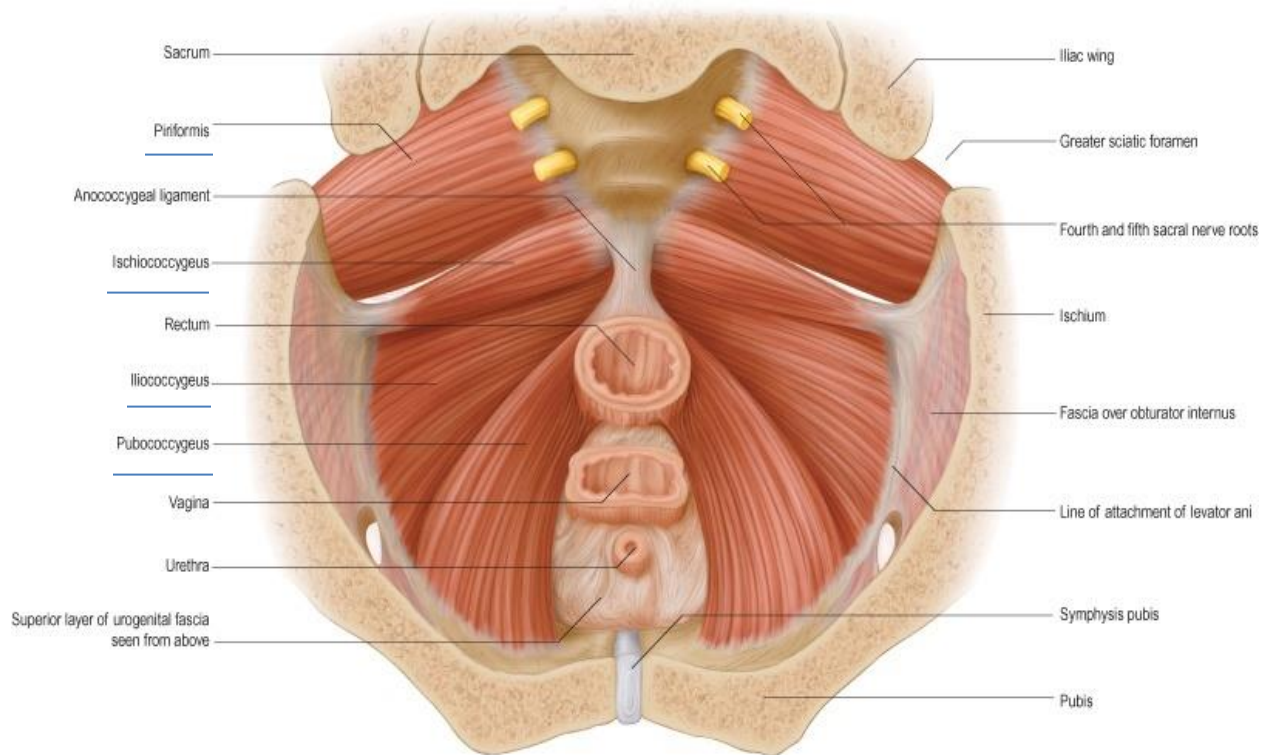
female reproductive system, the blood supply to organ [A] is a branch from:

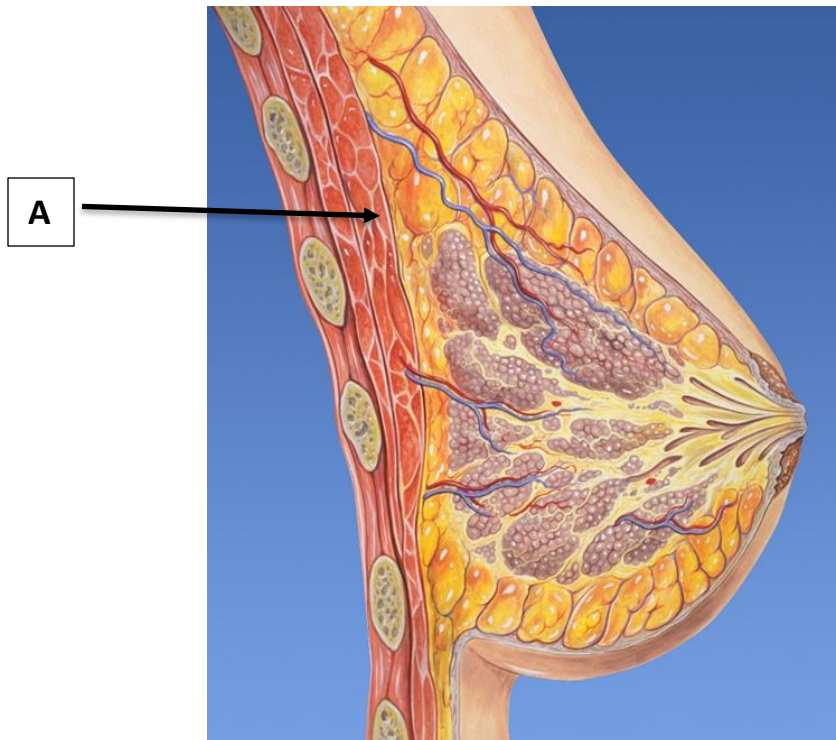
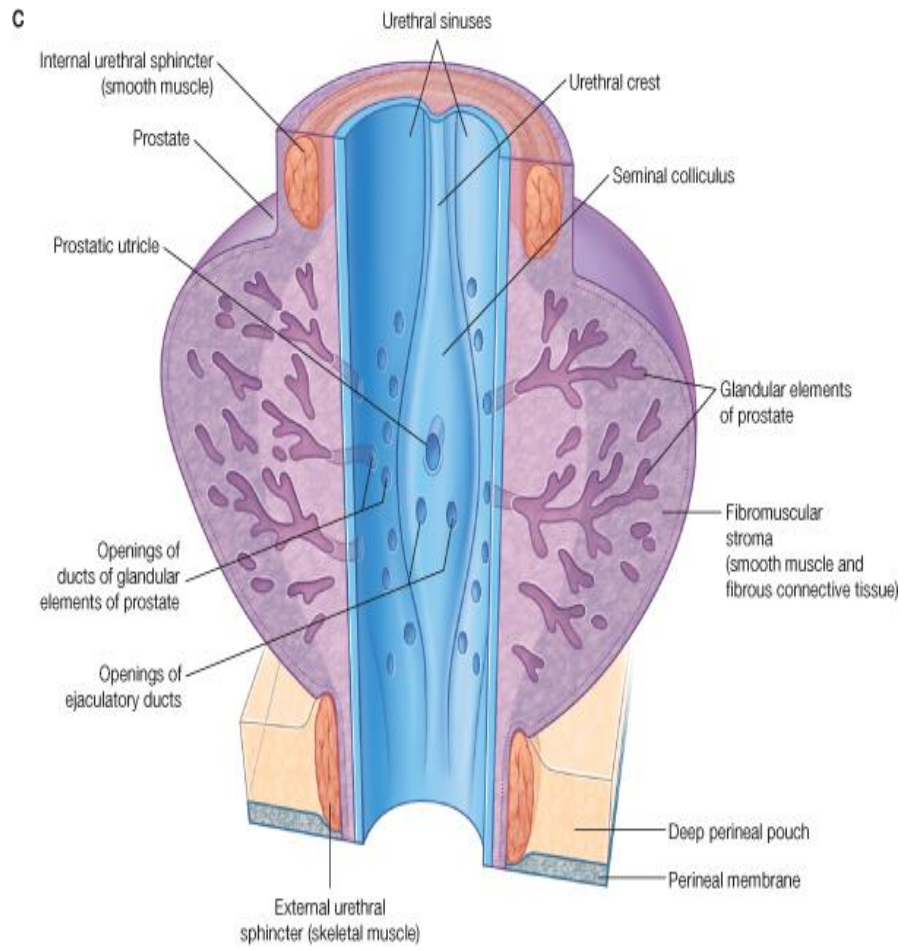
- A. External iliac artery.
- B. Internal iliac artery.
- C. Internal pudendal artery.
- D. Common iliac artery

Posterior relation of structure (A) is

- A. Sigmoid colon
- B. Uterine artery
- C. Urinary bladder
- D. Fallopian tubes







The nipple of the female breast lies opposite to which intercostal space?

- a- Fourth intercostal space.
- b- Second to sixth intercostal space.
- c- Second intercostal space.
- d- Fifth intercostal space.

Marked area (A) is

- a. Pectoralis minor muscle
- b. Serratus anterior muscle
- c. Pectoralis major muscle
- d. Subclavius muscle

