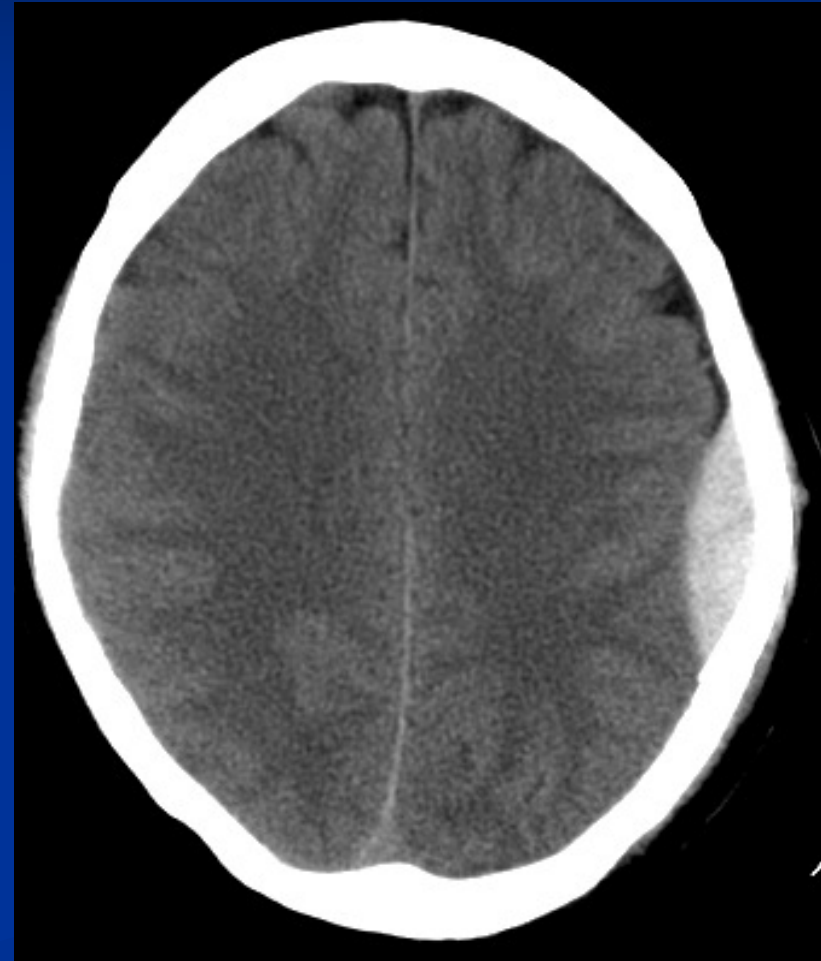


This image shows:

- A. Infarction
- B. Skull fracture
- C. Epidural hematoma
- D. Meningioma
- E. Falx hematoma



This patient presented with sudden left hemiplegia. CT shows:

- A. Acute MCA infarction
- B. Acute subdural hematoma
- C. Subarachnoid hemorrhage
- D. Brain abscess
- E. Brain tumor

