

Nervous System



Sensory Examination

WIPE:

- Wash hands , Introduce self , Confirm patient details (name/DOB)
- Explain examination
- Gain consent
- Ensure privacy and expose the area involved(upper or lower limb ex.)

Spinothalamic Pathway:	
Procedure	Indications/findings
Using a new pen or a sterile needle. Demonstrate the patient that this induces a sharp sensation by touching lightly normal area, such as anterior chest wall. Then, ask patient is the pinprick sharp or dull.	To assess pain
Using test tubes with hot and colds water, ask the patient to close his/her eyes and ask what he/she feels. "Does it feel hot or cold?"	To assess temperature

:Notes

- Dying back pattern = glove and stocking (This is what is seen in DM patients)

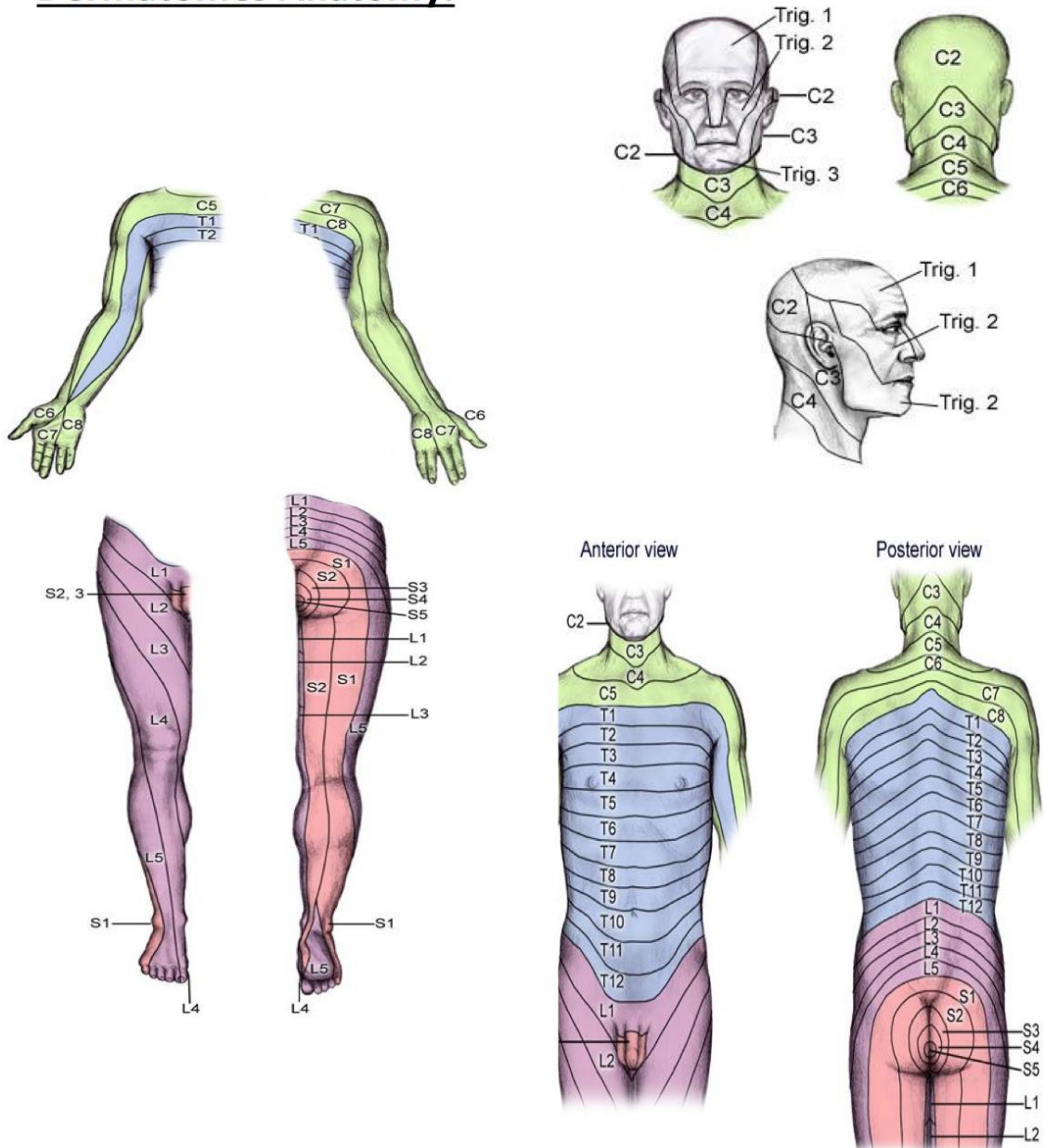
Posterior column:

Procedure	Indications/findings
Using a tuning fork, ask the patient to close his/her eyes, and place the tuning fork on a distal bony prominence, the patient should be able to describe a feeling of vibration and should also be able to tell you when exactly does the tuning fork deaden(stopped)	<p>To assess vibration</p> <ul style="list-style-type: none"> - Note: When testing for vibration, you should 1st provide a reference point in the forehead or sternum
Use the distal interphalangeal joint of the little finger or the big toe of the patient. Grasp the toe from sides (do not allow pressure sensation to give you a false sensation) and wiggle it up and down, demonstrating the positions to the patient. Ask the patient to close his/her eyes and identify the direction of movement.	To assess proprioception

Both: Spinothalamic and posterior column pathway

Procedure	Indications/findings
Use a wisp of cotton and touch lightly while the patient's eyes are closed, and let him tell you when he/she feels something	To assess light touch

Dermatomes Anatomy:



Generally (to remember):

At Level of nipple (T4), level of umbilicus (T10)

Index & Middle fingers (C7)

Index & Middle toes (L5)

Nervous System

Done by: **Rheema Alfadhil**

Revised by: **Hamad Aldossari**

Team Leaders: **AbdulrahmanBahkley&Sara Habis**