

OSCE TEAM
MED434

جامعة
الملك سعود
King Saud University



History taking:

FEVER

Color index :

Important

Further explanation

[Editing link](#)

Done by :

Abdulrahman Al Mizel

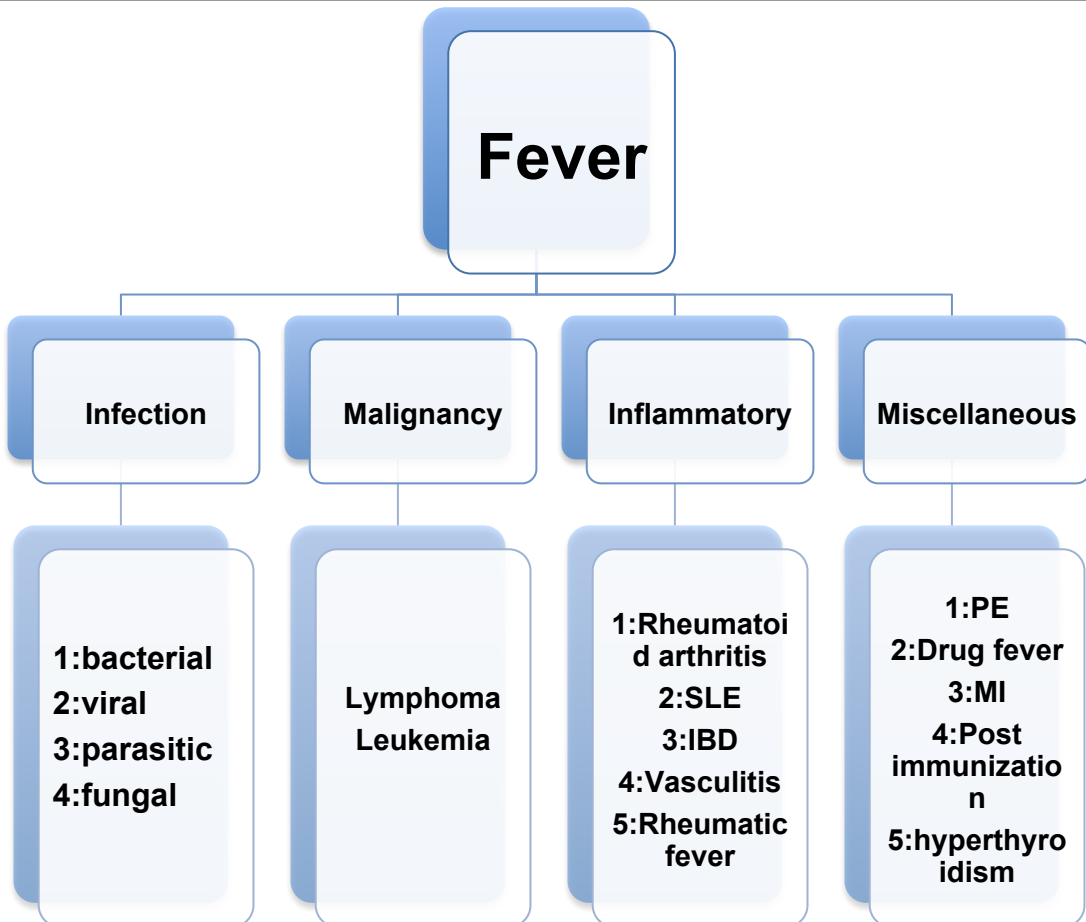
Nada alamri

Fever:

- ❖ implies an elevated core body temperature of more than **38.0°C**.
- ❖ Fever is a response to cytokines and acute phase proteins
- ❖ occurs in infections and in non-infectious conditions.
- ❖ clinical examination and simple investigation will reveal the cause of a fever in most patients. In a small number, however, **no diagnosis is apparent despite continuing symptoms**. PUO is sometimes used to describe this problem.

PUO: a fever persisting for >2 weeks, with no clear diagnosis despite intelligent and intensive investigation'

Differential Diagnosis of Fever

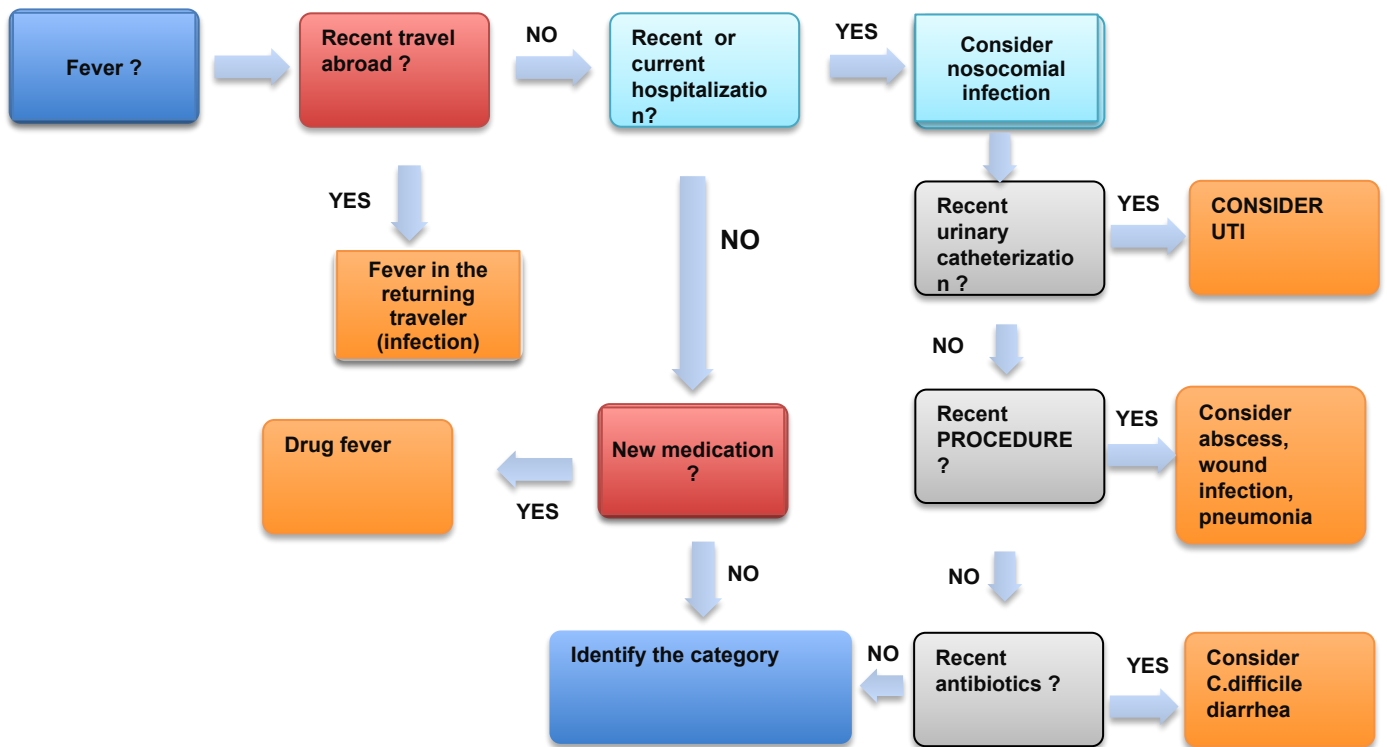


APPROACH TO FEBRILE PATIENT ? USE : **FACT**

Focused Questions	
<p>1:Have you had any sick contact ? 2:have you recently traveled abroad or been an a hospital ? 3:have you had any recent procedures (e.g. dental work : bacterial endocarditis)?</p> <p>1:have you lost weight ? 2: do you have any bony pain ?</p> <p>Do you have arthritis or rash ? Do you have a personal or a family history of inflammatory disease ?</p>	<p>Suggest infection</p> <p>Suggest malignancy</p> <p>Suggest inflammatory disorders</p>
Associated symptoms	Suggest
<p>1)Do you have dry cough, nasal congestion, sinus pain or a sore throat?</p> <p>2)Any redness of your skin ?</p> <p>3)Do you have productive cough or shortness of breath ?</p> <p>4)Do you have a blood in your septum?</p> <p>5)Do you have chest pain?</p> <p>6)Do you have burning with urination or ?</p> <p>7)Do you have Blood in the urine</p> <p>8)Have you had vomiting or nausea ?</p> <p>9)Do you have diarrhea ?</p> <p>10)Do you have abdominal pain ?</p> <p>11) Do you have night sweat , weight loss and malaise</p> <p>12) Do you have headache ?</p> <p>13) Do you have pain with chewing (jaw claudication) ?</p> <p>14)Have you had difficulty with speech, double vision, limb weakness or seizure ?</p> <p>15)Do you have easy bruising or gum bleeding ?</p> <p>16)Do you have stiffness or pain in you joints ?</p>	<p>1) Acute pharyngitis, sinusitis OR URTI</p> <p>2)Cellulitis, phlebitis or drug reaction</p> <p>3)Pneumonia, bronchitis or TB</p> <p>4)Pneumonia, bronchitis, TB, PE, lung cancer</p> <p>5)PE, Pneumonia, pericarditis, bacterial endocarditis</p> <p>6)UTI, Pyelonephritis, Renal cell carcinoma, prostatitis, urethritis</p> <p>7)UTI, Pyelonephritis, Renal cell carcinoma</p> <p>8) Gastroenteritis, cholecystitis, cholangitis, pancreatitis</p> <p>9)Gastroenteritis, IBD, Parasitic infection</p> <p>10)Gastroenteritis, cholecystitis, cholangitis, IBD, pancreatitis, Pyelonephritis,hepatitis</p> <p>11)Hodgkin's disease, non Hodgkin's lymphoma, Renal cell carcinoma</p> <p>12) GCA, Meningitis, encephalitis and sinusitis</p> <p>13) GCA</p> <p>14) Meningitis,</p> <p>15) Lymphoma, leukemia</p> <p>16) SLE, Septic arteritis, rheumatic fever, Rheumatoid arthritis, GCA, IBD, Wegener's Granulomatosis and polyarthritis nodosa</p>

Character	
How high is your fever? >40.5C(105.8F)	Suggest CNS infection,
Time course	
1:Continues? 2:Diurnal? 3:Tertian or Quartan fever ?	1:Suggest CNS infection 3:Malaria

Narrowing the ddx



Recent sick contact
Recent hospitalization
Recent chemotherapy

infection

Rash
Family history of inflammatory disease

Inflammatory

Weight loss
Bony pain

malignancy

Other

PE
Hyperthyroidism
pancreatitis