



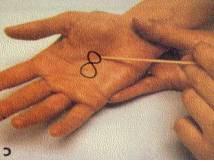




Sensory examination

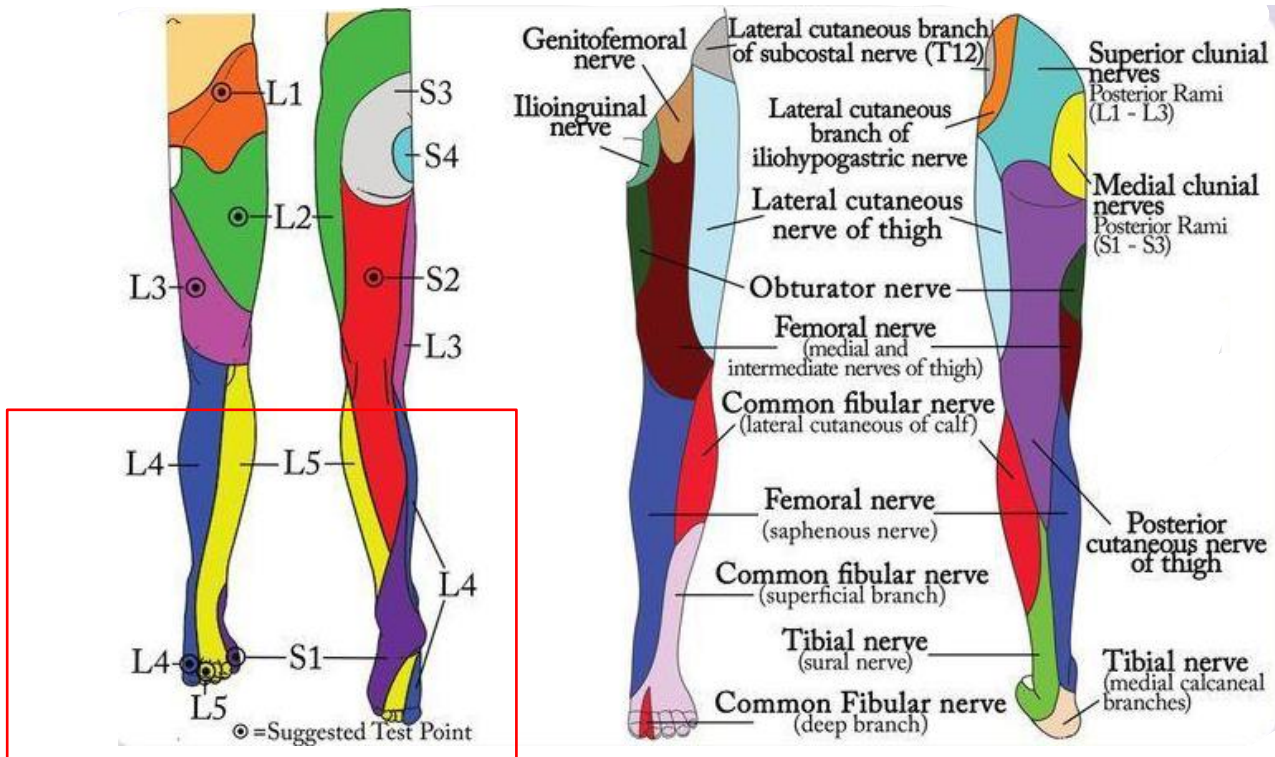
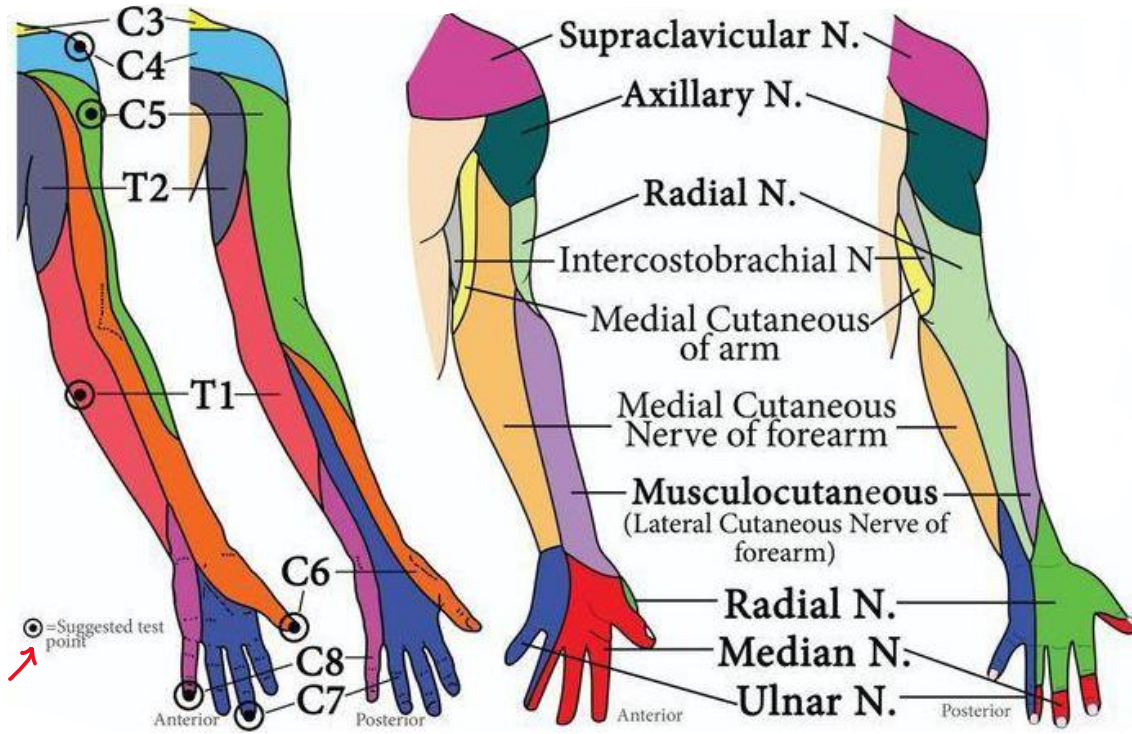
- Do not forget to inspect the arms\legs before you start.
- Always in every step:
 - ✘ Ask the patient to close the eyes
 - ✘ Demonstrate to the pt
 - ✘ Compare the other side before moving to the next step
 - ✘ Start from distal to proximal أيضاً سليم فمعناته اكيد احساسه بالبروكسمال سليم ايضاً
 - ✘ Try to move according to the dermatome (SEE THE NEXT PAGE TO NOW THE SUGGESTED TEST POINTS)

Area\Tract involved	What to examine	How to do it
Spinothalamic Tract	Pain Sensation	1) use Sharp safety pin 2) Ask the patient to close the eyes 3) Demonstrate sharp & dull to the pt علميه قبل كيف احساس الشارب والدول 4) Alternating sharp & dull ,Ask patient:Sharp or dull? Does this feel same as this? 5) compare the other side before moving proximally
	Temperature [NOTE:it's Often omitted if pain sensation normal]	1) Use 2 test tubes filled with hot & cold water\or tuning fork heated or cooled by water 2) Ask the patient to close the eyes 3) Demonstrate hot& cold feeling to the pt 4) Alternate clod & hot ,Ask patient:cold or hot? Does this feel same as this? 5) compare the other side before moving proximally
	Light Touch	1) use Wisp of cottonحاولوا ترققون طرف القطنه 2) Ask the patient to close the eyes 3) Demonstrate ترا كذا احساس القطنه علميه 4) Touch lightly - avoid pressure,Ask patient:To respond when touch is felt . 5) Compare one area with another لا تنتظري لين تخلي اليد اليمين كلها ثم تروحي لليسار, لا قارني جزء بجزء !! 
Posterior Columns	Vibratory Sense	1) use 128 Hz(not 256 Hz)Tuning fork 2) اخبط الشوكه بطاولة او اي جسم جامد 3) Ask the patient to close the eyes, and place the vibrating tuning fork onto the patient's sternum and confirm he can feel it buzzing. 4) For upper limb: Place onto the distal interphalangeal joint of the index finger and ask them if they can feel it buzzing, If vibration sensation is impaired :continue to assess the bony prominence of more proximal joints [interphalangeal joint of thumb →carpometacarpal joint of thumb → elbow → shoulder] ✘ do not go to proximal sites unless distal site is abnormal. مثلا اذا حس في السبابه فخلاص مايحتاج اكمل لانه اكيد الباقي سليم 5) For lower limb: Place the vibrating fork on bony prominence (hallux of the big toe)ask the pt can u feel that buzzing?,if not ,move proximally[medial malleus→tibial tuberosity→illiac..] 
	Proprioception [NOTE:U have to examine the finger for UL then the Toes for LL]	1) Grasp finger\big toe by sides - pull away from other toes most distal part of finger لازم تمسكون الاصبع من اطرافه 2) Ask the patient to close the eyes but demonstrate with eyes open 3) Demonstrate "up" & "down" 4) Alternate "up" & "down" ,Ask patient:is it up or down? 5) compare the other side ✘ Test both great toes (or index fingers). If impaired, move to more proximal joints in each limb 
	Tactile Localization	1) Ask the patient to close the eyes 2) Touch pt on right cheek & left arm"alternating" ,Ask patient where touch was felt?! 
Cortical Sensation مره بسيطه! لكن كثير مايعرف انها تدرج تحت الكورتيكال سينسيشن مره جت ستيشن المطلوب بس تسوي اقزامنيشن للكورتيكال سينسيشن! وماحد عرف (0:يسويها غير طلابي)	Graphesthesia [Graphesthesia:examine the Ability to identify numbers written in hand Using patient's orientation]	1) Ask the patient to close the eyes 2) خودي شي حاد نوعا ما زي المفتاح واكتبي اي رقم علي يده ثم اسليه وش كتبت , 3) compare with other hand . 
	Two-Point Discrimination	1) Use a caliper زي الفرجار بس تكون طرفيها حاد(شوفوا الصورة) 2) Ask the patient to close the eyes 3) Alternate randomly b\w Touching the pt with one or both points ,ask the pt each time:can u feel one prong or two?if the pt says "one" but u were using two.spread the clip points wider and try again. 
	Stereognosis [Stereognosis is the Ability to identify an object by feeling it]	1) Ask the patient to close the eyes 2) Place familiar object زي القرش أو المفتاح in patient's hand & ask patient to identify it #Normally patient manipulates it skillfully & identifies it correctly 

شوفوا الدوائر السوداء الصغار

هذي الي امشوا عليها لمتسواو السينسوري اقزامنيشن

⊙ = Suggested Test Point



الي بالاحمر يجيبها د. محمد العنزي. قد قال بالمحاضرة لو بكتب ستيشن اوسكي
 يمكن اقزام سينسيشن لور ليم تحديدا الفوت او هيستوري برفرال نوروباتي