

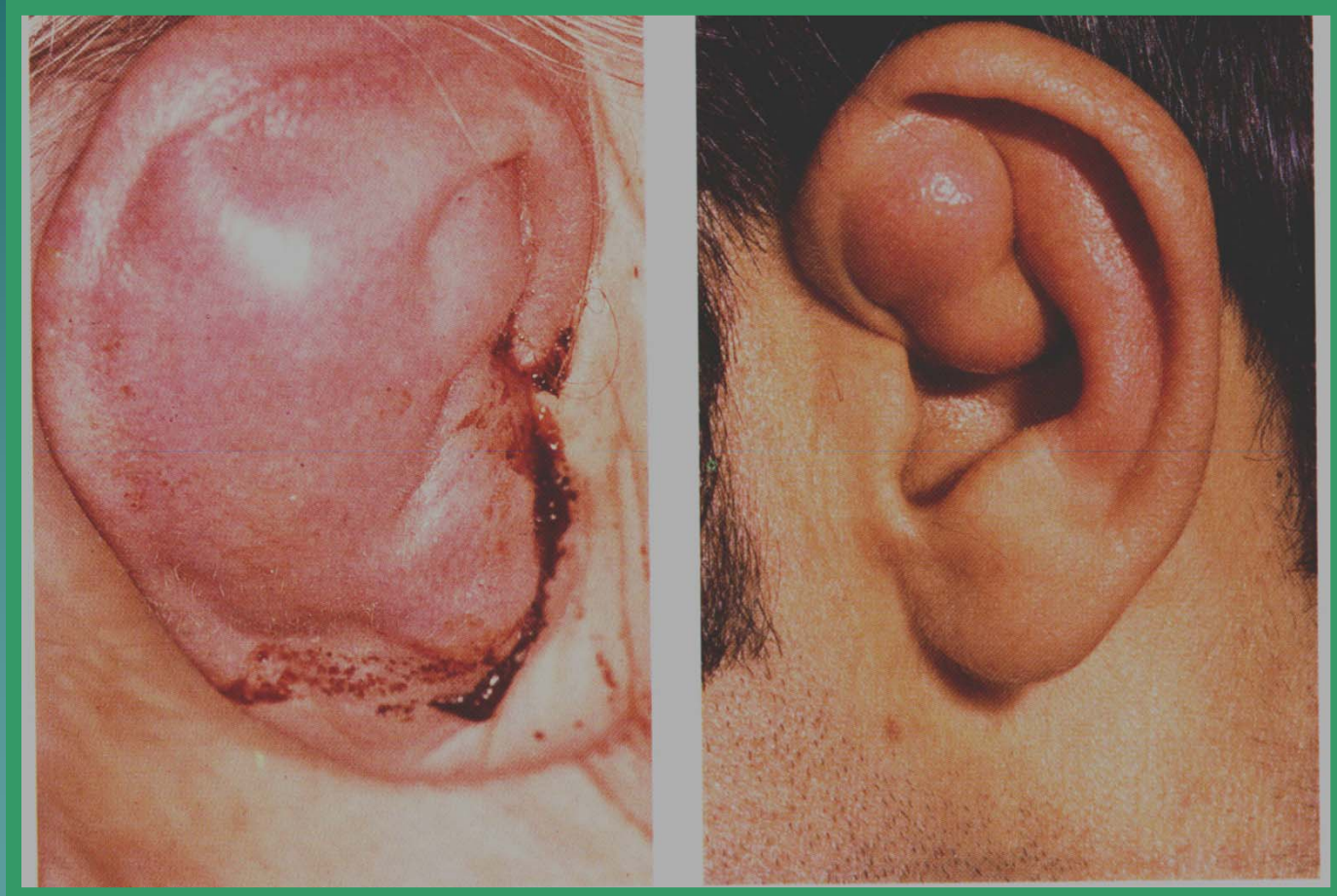
Atlas of Ear Trauma

The background is a solid teal color. In the bottom right corner, there is a stylized silhouette of a mountain range with jagged peaks, rendered in a slightly darker shade of teal.

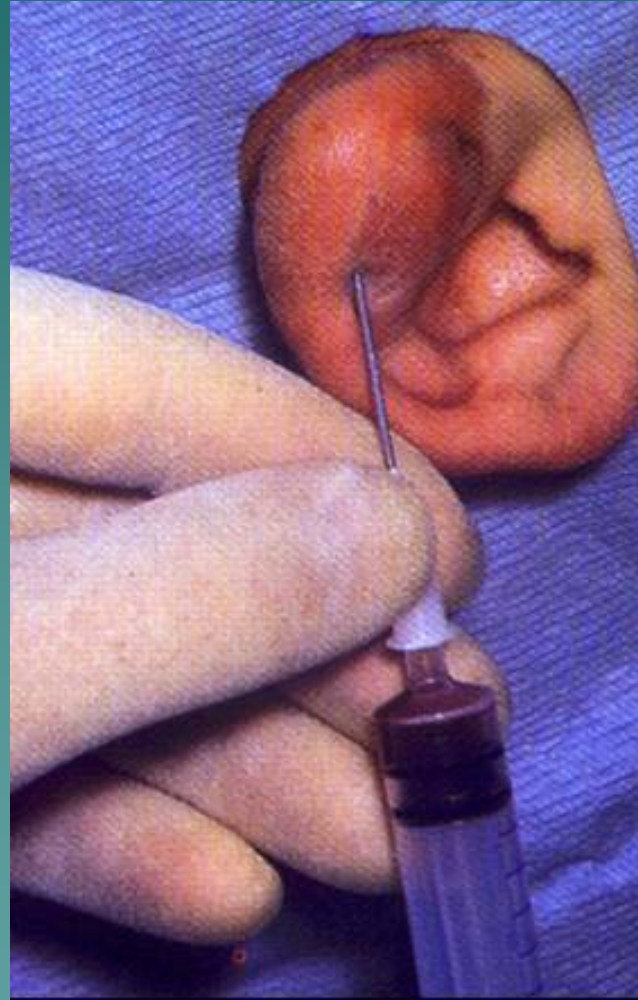
Hematoma Auris



Hematoma Auris



Aspiration of Hematoma Auris



Infected hematoma



Cauliflower ear



Sharp cut auricle



Human bite



Foreign bodies external canal



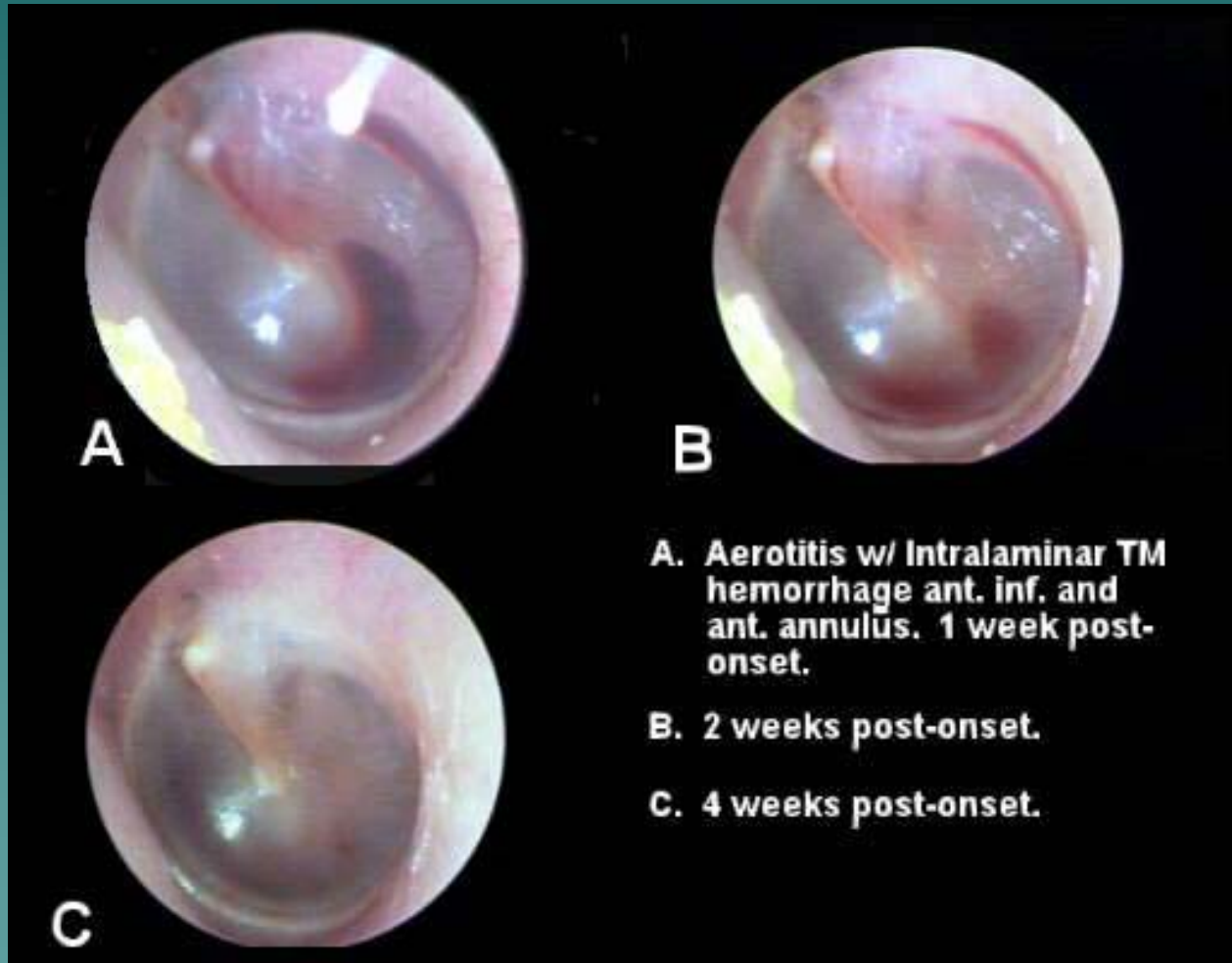
Foreign bodies external canal



Otitic Barotrauma



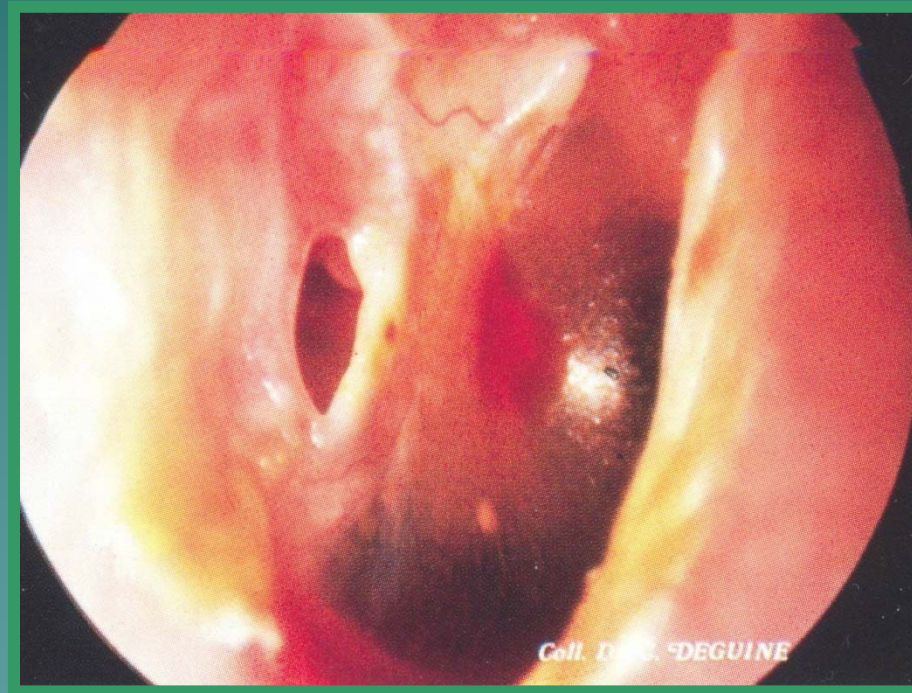
Otitic Barotrauma



Traumatic perforation of tympanic membrane



Traumatic perforation of tympanic membrane



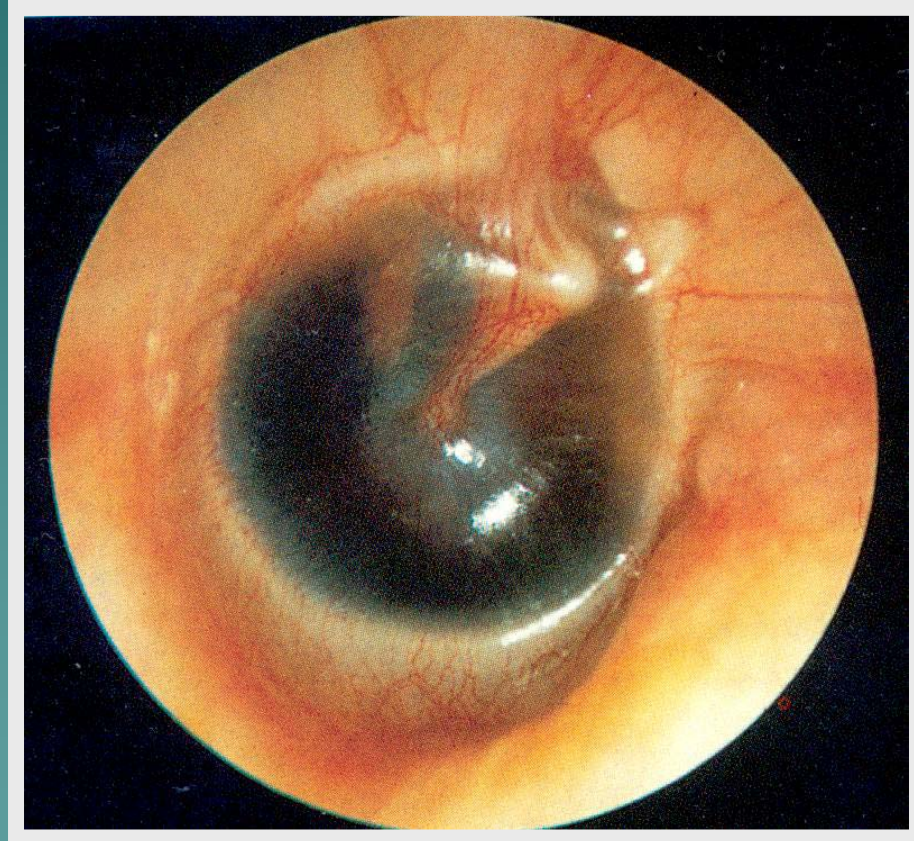
Traumatic perforation of tympanic membrane



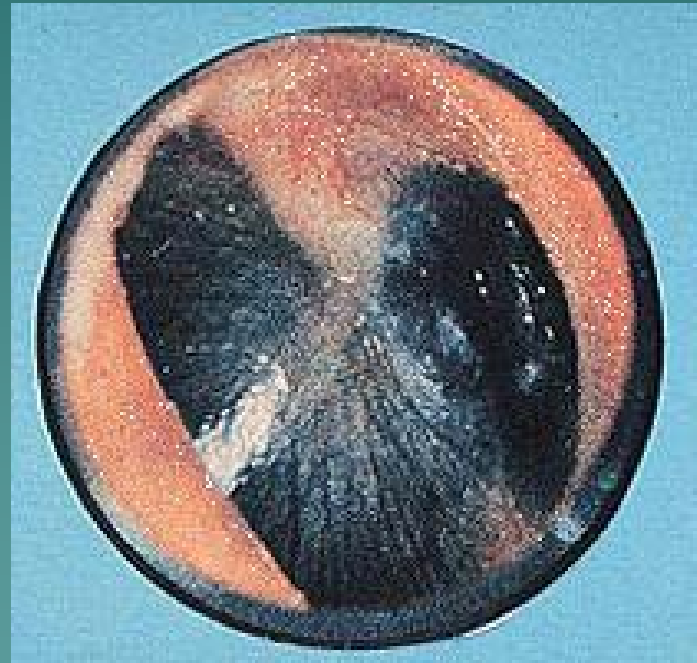
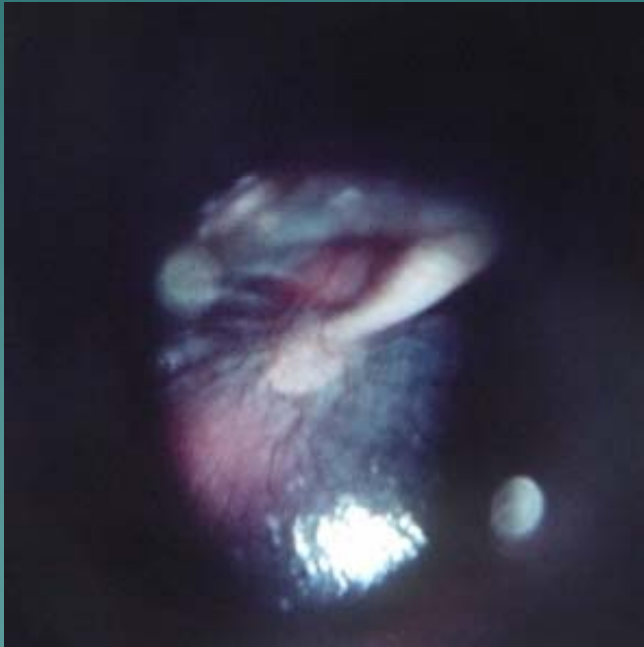
Infected traumatic perforation



Hemotympanum



Hemotympanum



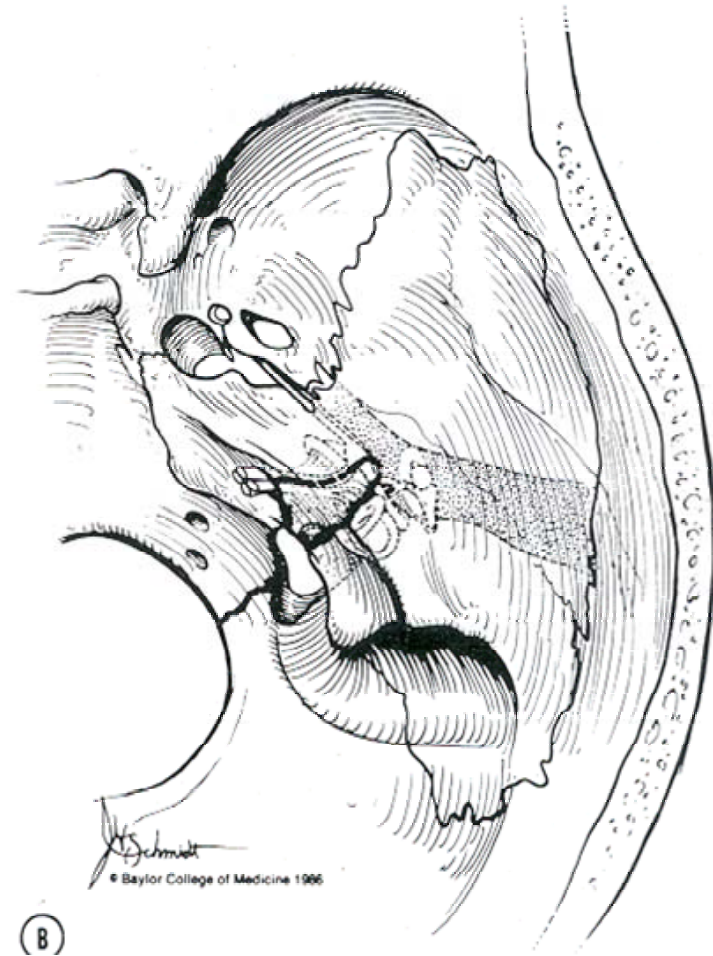
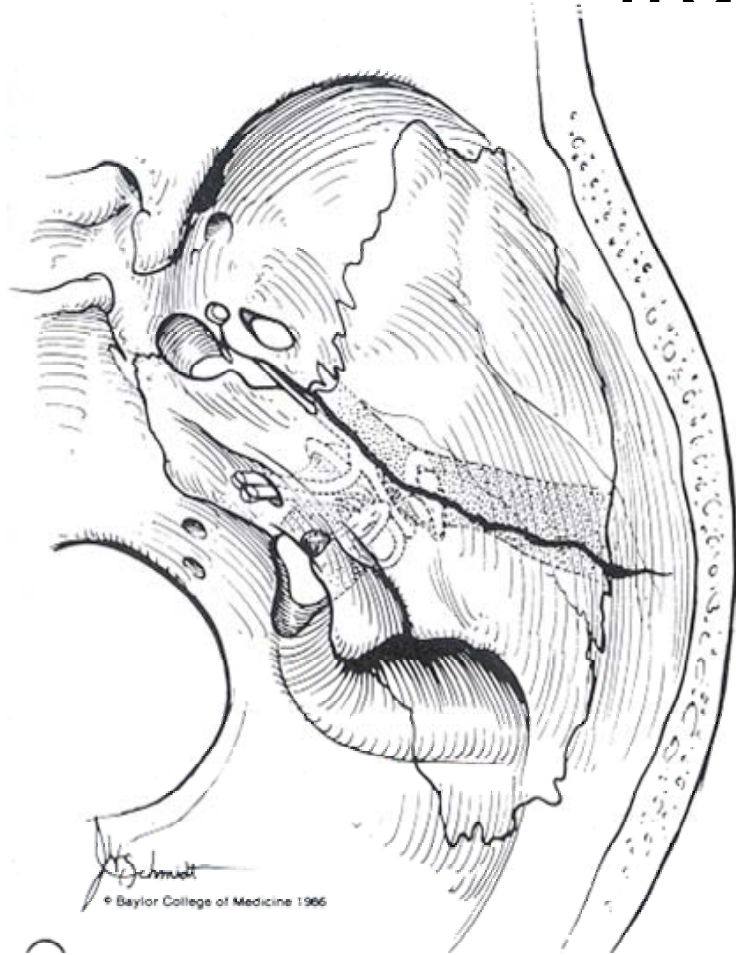
Fracture temporal bone



Fracture temporal bone



Longitudinal and transverse fractures



Battle sign (Fracture temporal bone)



Battle sign (Fracture temporal bone)



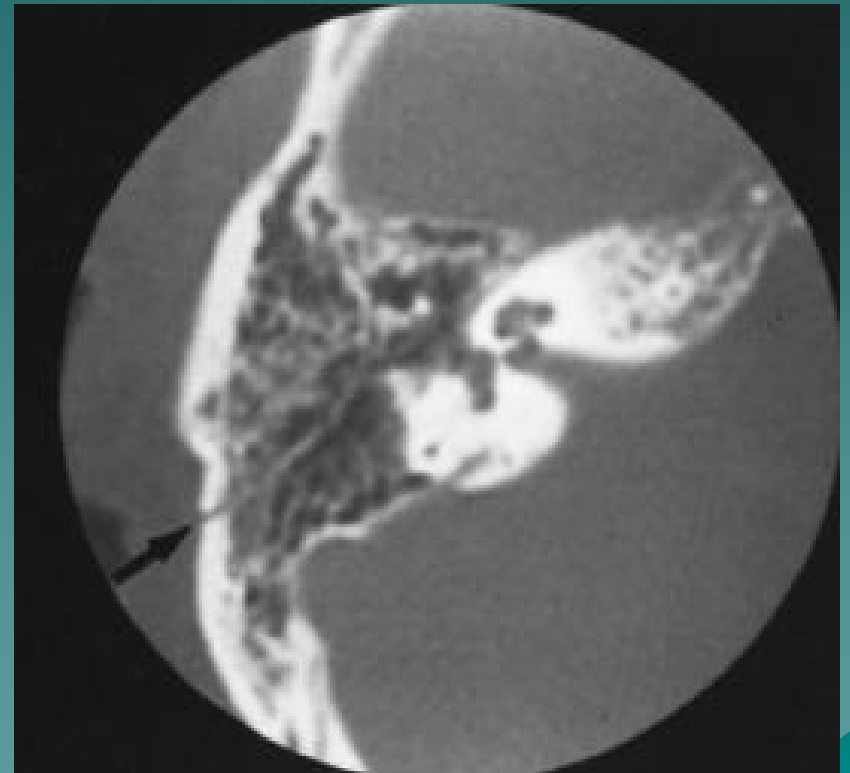
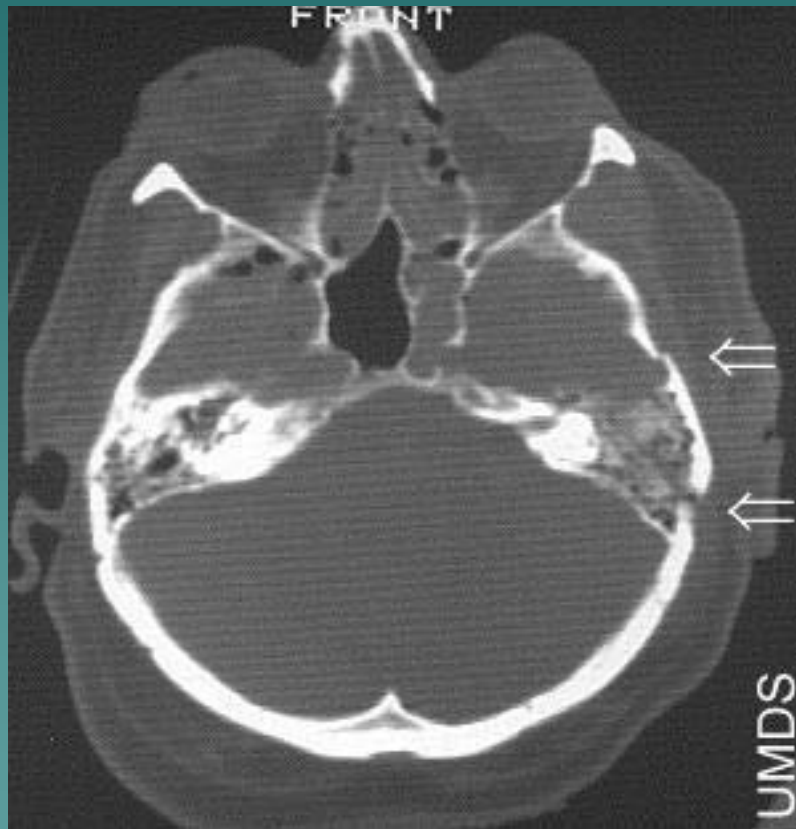
CSF otorrhea



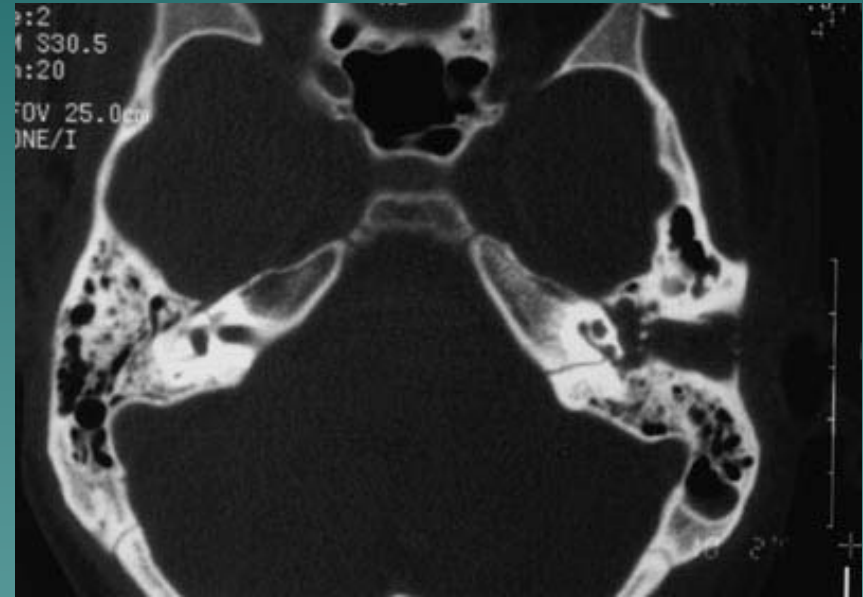
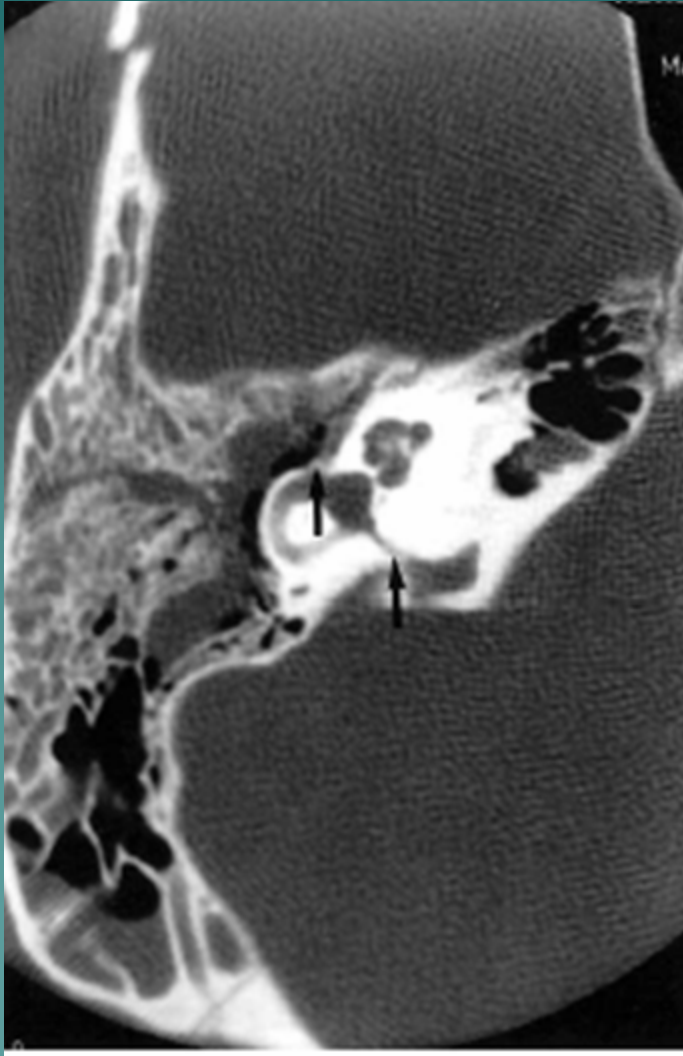
Longitudinal Fracture Temporal Bone



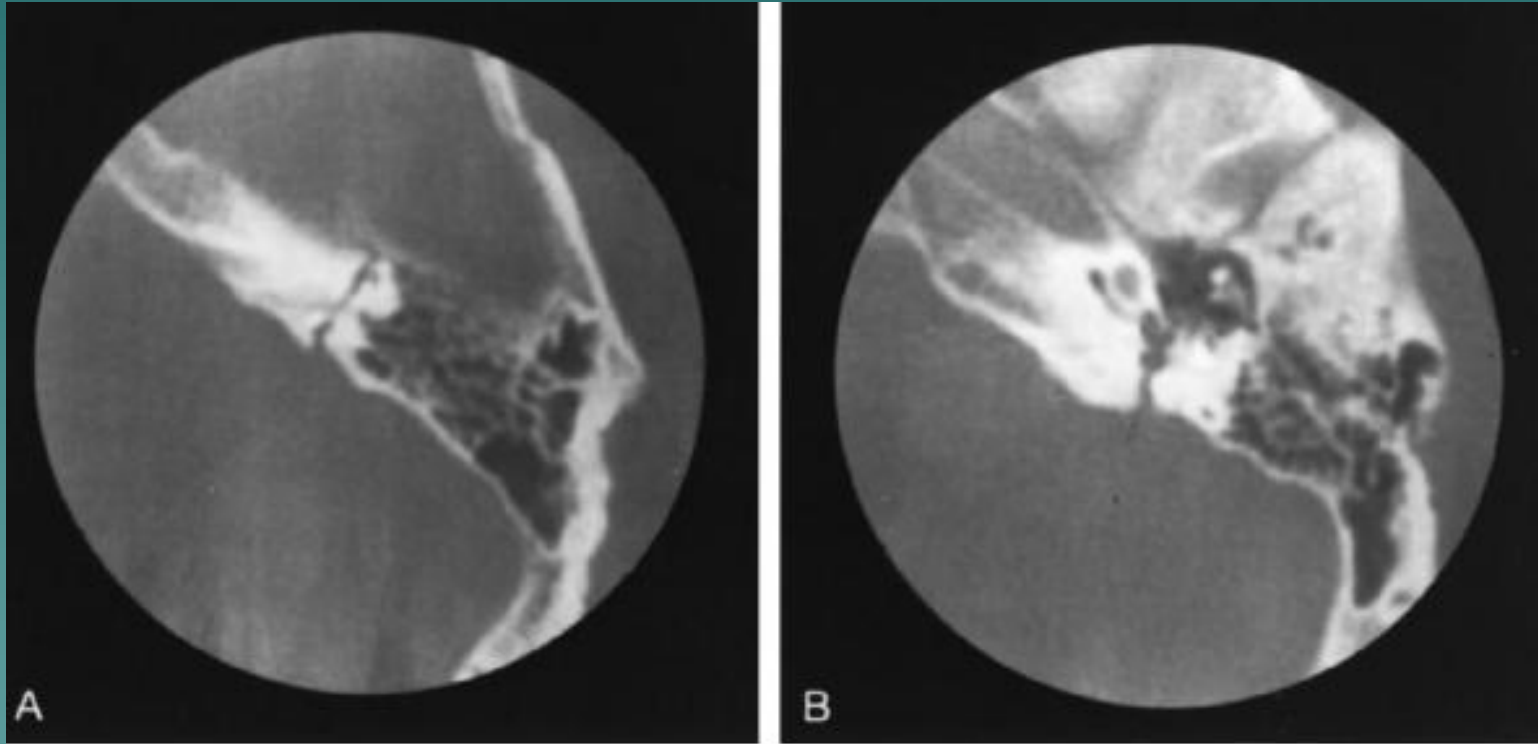
Longitudinal Fracture Temporal Bone



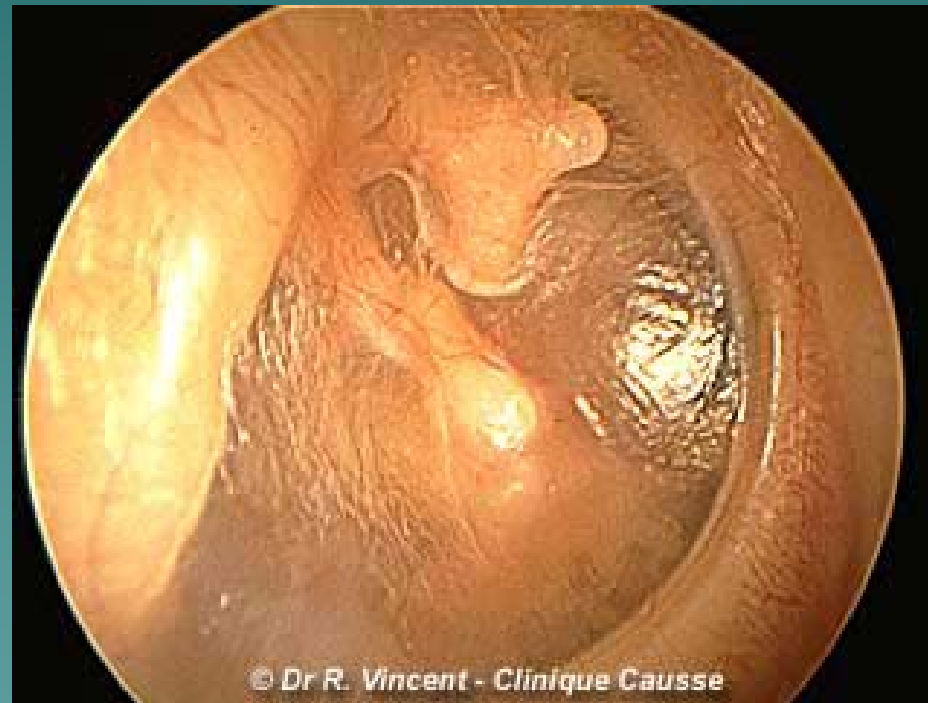
Transverse fracture temporal bone



Transverse fracture temporal bone



Traumatic disruption of the incus



Traumatic disruption of the ossicular chain

