

**Theme 3:**  
**Mood disorders II**

**Ahmad AlHadi, MD**

Assistant Professor and Consultant  
in Psychiatry and Psychotherapy

# Content

- Differential diagnosis discussion.
- Traits that resemble this case (cluster B).
- Common used Defence mechanisms.



# Case Vignette:

- Huda is a 25 yr-old single female teacher. She had an episode -of at least 2 weeks duration- of low mood associated with loss of interest, isolation, crying spells, excessive guilt feelings, death wishes, suicidal ideation and reduction in libido. Her mother has history of bipolar disorder and one of her sisters had post-partum psychosis.
- When she was 20 years, she had an episode of irritable mood, talkativeness, hyperactivities, decrease need for sleep, taking off her clothes in front of her adult brother. It lasted for 3 week.

## Case Development 3:

- Her mother reported that her daughter was complaining of **fever and headache** few days prior the episodes when she was 20. She also reported that her daughter had new problematic friends few months prior that episode and she is suspecting the **use of illicit drugs**.

# Differential Diagnosis

- Organicity
- Substance
- Psychiatric Disorders



# Depressive Episode



- Hypothyroidism
- Neurological disorders:
  - Stroke
  - Parkinson dis
- Anemia
- Cancer

**Organicity**

# Depressive Episode



- Stimulants (Amphetamine/cocaine) withdrawal
- Depressant drugs (alcohol, opiates, barbiturates) intoxication
- Steroids
- Some antihypertensive (propranolol)
- Cimetidine
- Roaccutane

**Substances**

# Depressive Episode



- Normal Grief
- Dysthymia
- Adjustment Disorder
- MDD
- Schizoaffective dis
- Dementia
- Chronic Fatigue Syndrome / Fibromyalgia

PSYCHIATRY



# Depressive Episode



Organicity	Substance	Psychiatric
Hypothyroidism	Stimulants (Amphetamine/cocaine) withdrawal	Normal Grief
Neurological disorders: Stroke Parkinson dis	Depressant drugs (alcohol, opiates, barbiturates) intoxication	Dysthymia Adjustment Disorder
Anemia		MDD
Cancer	Steroids	Schizoaffective dis
	Some antihypertensive (propranolol)	Dementia
	Cimetidine	Chronic Fatigue Syndrome / Fibromyalgia
	Roaccutane	

# Manic Episode



- Hyperthyroidism
- Cushing disease
- SLE
- AIDS
- Neurological disorders:
  - Epilepsy
  - MS

**Organicity**

# Manic Episode



- Stimulants (Amphetamine/cocaine) intoxication
- Ecstasy intoxication
- Depressant drugs (alcohol, opiates, barbiturates) withdrawal
- Dopamine agonist
- Anticholinergics
- Mercury intoxication
- Antidepressants

**Substances**

# Manic Episode



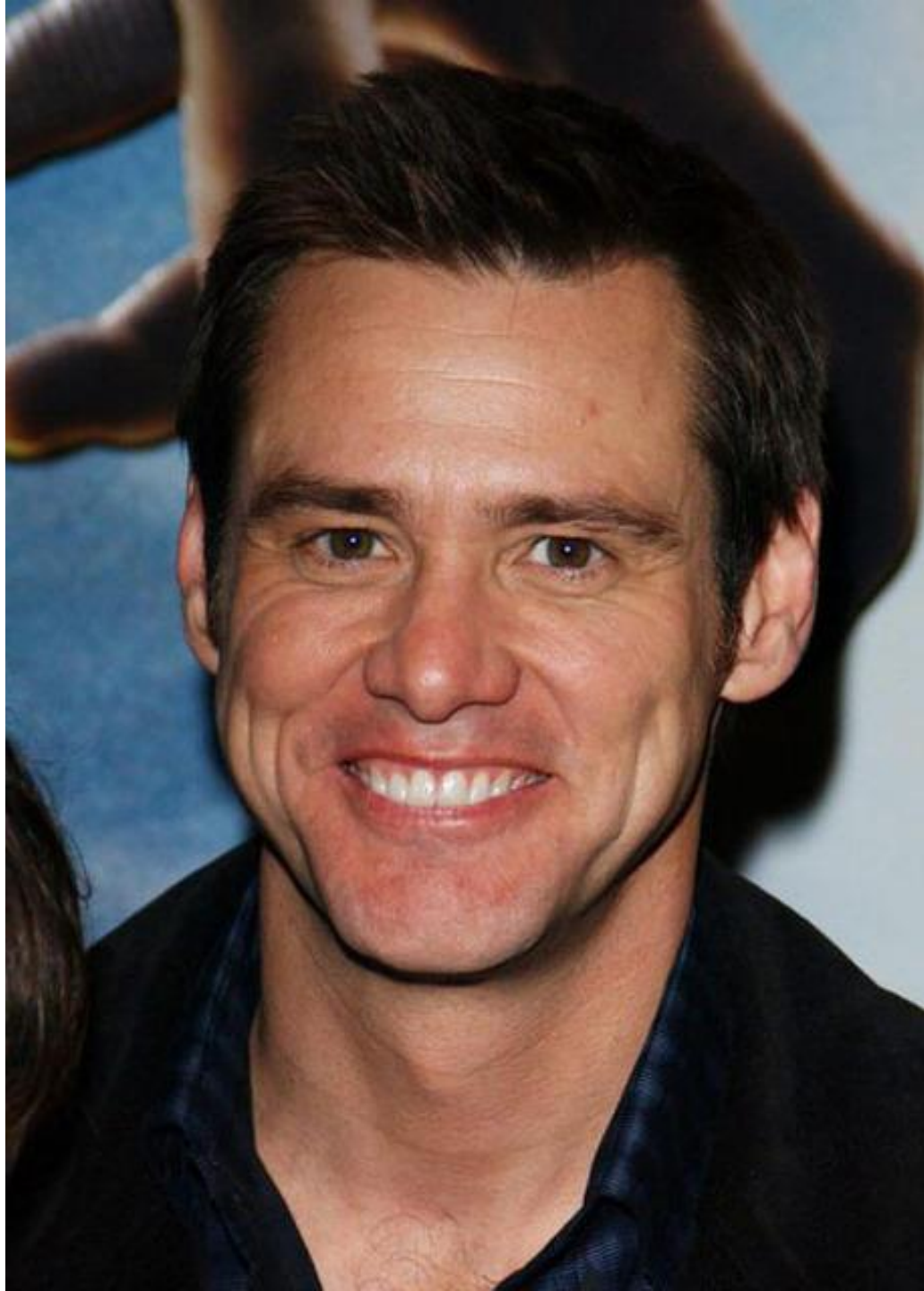
- Schizoaffective dis
- Schizophrenia
- Narcissistic Personality dis

PSYCHIATRY

# Manic Episode



Organicity	Substance	Psychiatric
<p>Hyperthyroidism</p> <p>Cushing disease</p> <p>SLE</p> <p>AIDS</p> <p>Neurological disorders: Epilepsy MS</p>	<p>Stimulants (Amphetamine/cocaine) intoxication</p> <p>Ecstasy intoxication</p> <p>Depressant drugs (alcohol, opiates, barbiturates) intoxication</p> <p>Dopamine agonist</p> <p>Anticholinergics</p> <p>Mercury intoxication</p> <p>Antidepressants</p>	<p>Schizoaffective dis</p> <p>Schizophrenia</p> <p>Narcissistic Personality dis</p>



gh Museum

Corbis

**Thank you**

**U can wake up now 😊**

**Qs and BREAK**