

## 4<sup>TH</sup> YEAR ORIENTATION SUMMARY

### Cycles

**1st cycle** : Obgyne

**2nd cycle**: orthopedics , opha, ENT

**3rd cycle**: primary care , psychiatry , derma

### Obgyne: 8hrs

reference : Kaplan videos + slides + book + 428 obgyne booklet 'for revision'

Logbook 5% , mini cex 5% , DXR , 5% , CBD 5% ,

Midterm :20% final : 20 % OSCE : 25% SAQ: 15%

Logbook :clinical assessment: 2 full Hx and PE (also with US description) + other things.

Mini cex : like long-case but not necessary a case presentation.

must prepare and study everything. (it's after lectures)

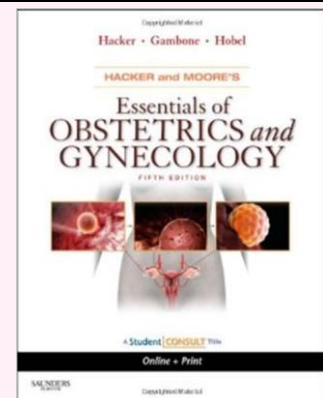
CBD: 30 video talk lectures with questions asked afterward must prepare before as each 2 students are assessed without telling them. also, it comes in the exams.

OSCE: *15 stations* 6 mins each (note must practice counting before)

other things: skill lab, ER, OR

Tips:

- fill the logbook early
- study lectures before Clinical
- study and read for video lectures like an exam (better in catching up also for the assessment)
- there is only 2 lectures difference between mid and final.



### Anesthesia :4 hrs.

reference: Anesthesia booklet (from the department), logbook, lectures.

- logbook here become a documentation tool that must be studied from in the exams. Covering 4 topics Preoperative visit, Intraoperative Record, Recovery room, Postoperative or pain management (10%)

MCQ; 40 %

OSCE :50 % 5 stations

the lectures if followed by a presentation done by students than a clinical activity (OR, Post op, etc.)

## Orthopedics 6 hrs.

reference: lectures and book if needed, note taking is important + also Toronto notes

40% MCQ with 4 case SAQ, 40% OSCE, CBL

10%, continuous assessment 10%

MCQ: paper based with a laptop to see the radiology and gross pictures

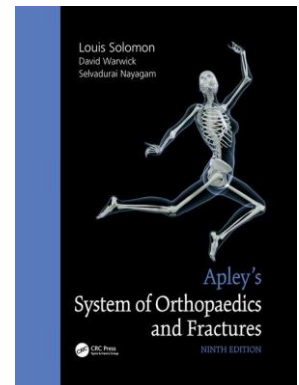
OSCE: 7 stations might ask on management or do casting

CBL: presentation must prepare

everyday 1 lecture than practical session and clinics

tips:

- practice casting try finishing it in 4 mins
- must read the book on compartment syndrome and adult and pediatric fractures



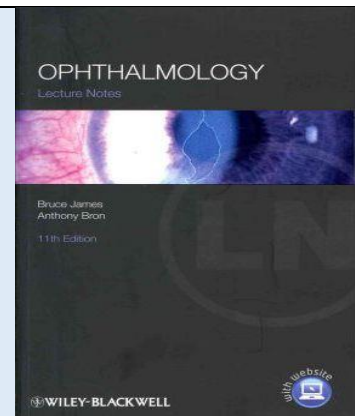
## ophthalmology: 4 hrs.

MCQ 30%, SAQ 40% in (30 mins), OSCE: 20% practical assessment 10%

10 lectures most important pharma lecture

Tip: try to see a lot of pictures

- dr. essam notes are very important every word.  
Practical assessment : 2 sessions one doctor explain all examination prepare to maximize learning.



## ENT :4 hrs.

MCQ:30%, SAQ: 40% OSCE: 20% Clinical assessment: 10%

reference: lectures (enough on its own) and Toronto notes

also, there is clinics -OR

as for clinical assessment is after lectures

## Psychiatry: 4hrs

ملزمة + video case + References: Prof. Mohammed Al-Sughayir's book: Basic psychiatry (if needed but ملزمة cover it)

final 40% - mid MCQ 40% - OSCE 20%

lectures and video case are main

OSCE come from checklist

**Derma : 10 lectures 2 hrs.**

lectures are main resource, and lecture notes

mid MCQ: 30% - final 60% (40 MCQ, 20 SAQ)- Clinical evaluation 5% - PBL 5%

tip: description words are important. new words to learn also see different pictures and describe

**Primary care :6hrs**

MCQ 30% - OSCE 20% - attendance 5% - data interpretation 15% - CBD 10% -

SLS 10% - EBM 10%

Important to attend

Data interpretation: like ECG or other test

SLS: student led seminar

**CBD& EBM:** Case Based (Presentation) Discussion with Evidence Based Medicine

Also there is TBL ☺

Wish you a successful, memorable, pleasant year.

Hadeel B. Alsulami