

# Basic Trauma Management

# Objectives

- [Know the Basics (A,B,C,D,E,F,F,F,F&F)]
- [Do no Harm]
- [Imaging & US, What do you need to know?]
- [Documentation issues]
- [The Lone Emergency Physician]

# Introduction

— [ATLS

# Prehospital

—— [Mechanism of injury

—— head-on

—— rear ended

—— T-bone

—— Pedestrian

—— Ejected

—— Death of another passenger

# Prehospital

——— [ Seatbelt

——— [ Airbag

——— [ Child Seat

——— [ dashboard ..!

# Prehospital

- [First Responder (Remember: Seen Safety)]
- [Extrication]

# Lets Get Down to Business

——— [Preparation (When Possible)]

——— Monitor

——— Blood

——— Staff

——— Surgeons

——— [Primary Survey]

——— [Secondary Survey]

# Wait .....

——— [2 Things Before A... ?

1. Boarding & C-Spine
2. Universal Precautions



# Airway

—— [How to assess airway patency ?

—— Talking

—— Foreign body

—— Stridor

—— Gag Reflex ?

—— Burns

# Airway Cont'

- [How to Open an Airway in a Trauma Patient?
- [What are the indications for intubation in a Trauma Patient ?
- [Prehospital Airway Management !

— [ **Airway**

— [ **Breathing**

— [ **Circulation**

— [ **Disability**

— [ **Exposure**

— [ **Finger**

— [ **Foley**

— [ **FAST**

— [ **Family**

— [ **Fentayl**

# Breathing

- [Equal Chest movement
- [Equal Breath Sounds
- [Trachial Deviation
- [Subcutaneous Air
- [Rib Fracture, Flail Chest
- [Open Chest wound

# Circulation

— [Access, control Bleeding

— [BP + Pulse Rate ..

— [What Else ?

— Skin

— Level Of Consciousness (GCS + others)

— Capillary refill

# Circulation

- [Fractures (Including Pelvis Stability)]
- [Active Bleeding]
- [eFAST]

# Disability

— [GCS

— [Pupils

— [Gross motor Strength

— [Sensory



# Exposure

—— [Log Role



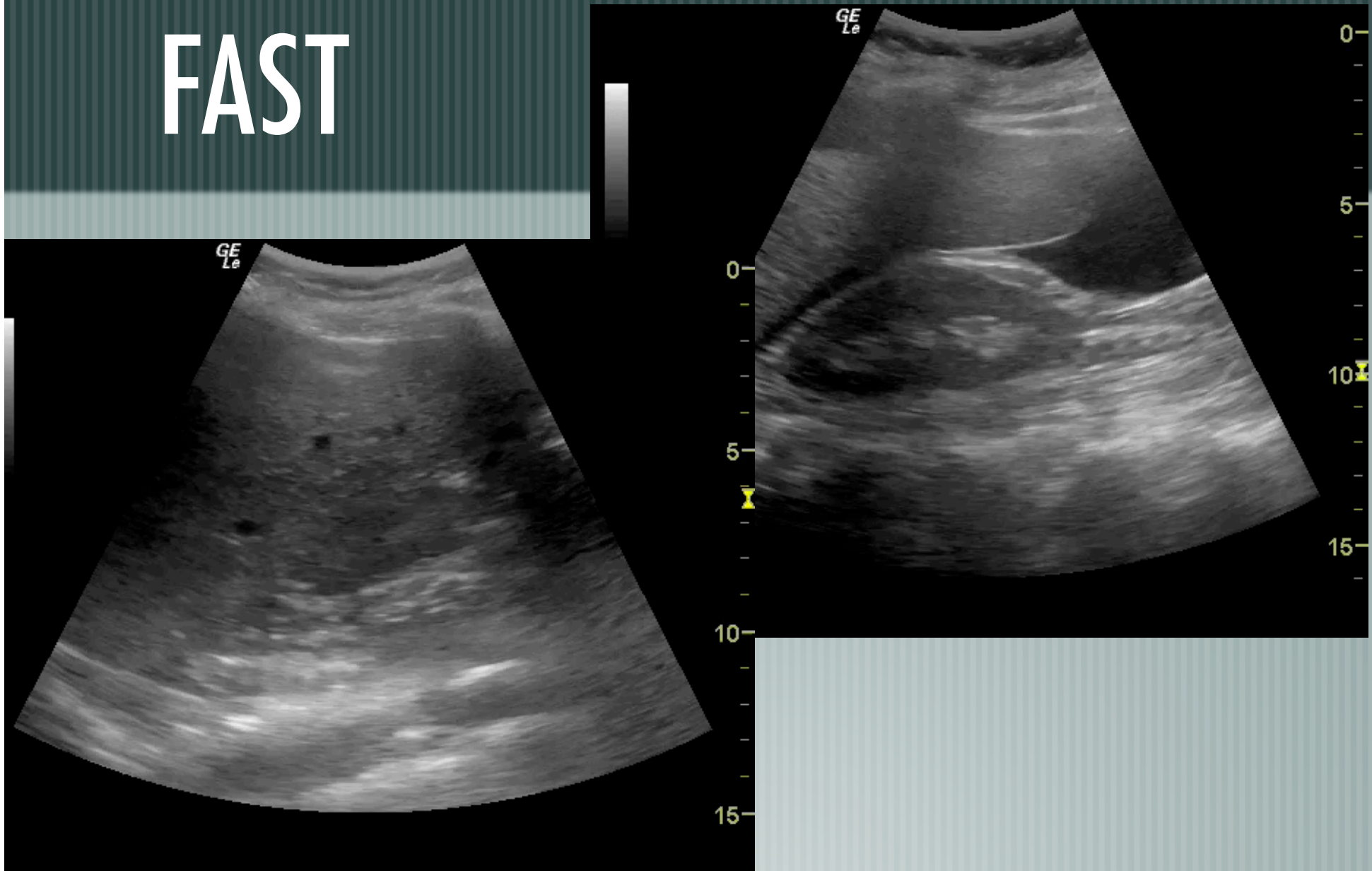
# Finger

# Foley

—— [Contraindications

# Family

# FAST



# FAST



# Fentanyl

- [We're Not working on a CAR
- [Patients feel Pain

# History (AMPLE..F)

- [Allergies
- [Meds
- [Past Medical , Surgical
- [Last Meal, LMP
- [Events of the Trauma (What do they remember)
- [Family, Friends & Field Information

# Secondary Survey & Tests

—— [ LEAVE NO STONE UNTURNED

—— [ Every bone

—— [ Every joint

—— [ In the Mouth

—— [ On the Back



# Imaging

— [Xrays

— [CT

— [Serial FAST

# Labs

- [ Glucocheck
- [ CBC
- [ Chem
- [ Type & Screen
- [ Coagulation
- [ Pregnancy test

- [ LFT's
- [ Troponin.. When ?
- [ Lactate..
- [ ABG
- [ Tox

# Don't Forget the Basics

- [Most Mistakes are made because we forget the Basics
- [Follow the Recipe

— [If a patient becomes unstable at anytime, Restart Your  
ABS's

- [Keep your cool & Don't Panic
- [Don't Get Distracted (Amputated Leg)
- [You Set the Tone
- [Ask, Why did they have the Trauma (Comorbidity, Suicide)