



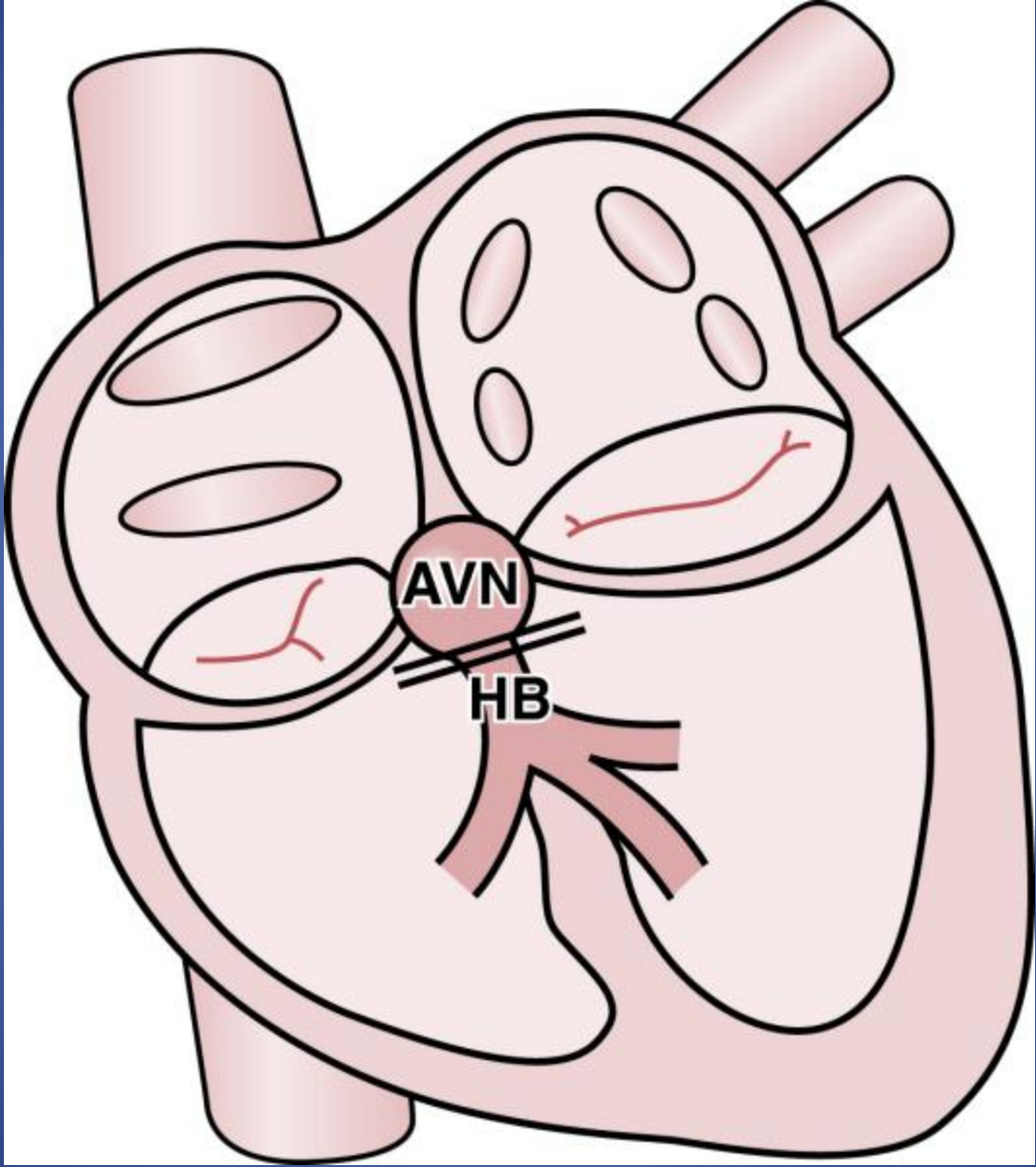
ECG med 443

Bradycardia

Ahmad Hersi

Bradyarrhythmia

- Sinus bradycardia
- SA node disease
- AV node disease



Sinus bradycardia

Sinus Bradycardia



Heart Block

1st°

- Constant PR prolongation without drop beat.

2nd°

- **Mobitz1:** Progressive PR prolongation + drop beat.
- **Mobitz2:** Constant PR prolongation + drop beat.

3rd°

- Complete dissociation between P and QRS.

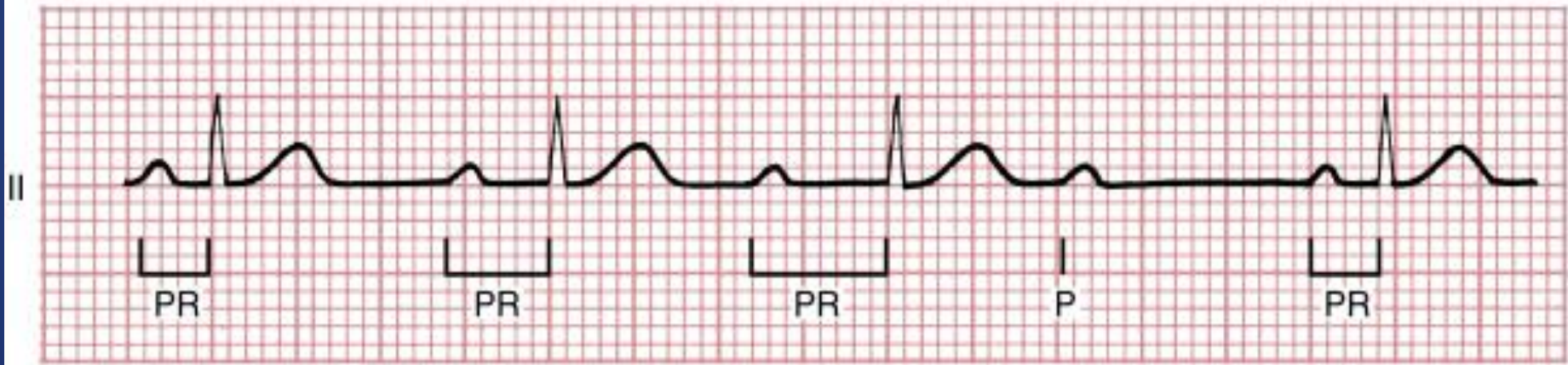
1st HB

First-Degree AV Block



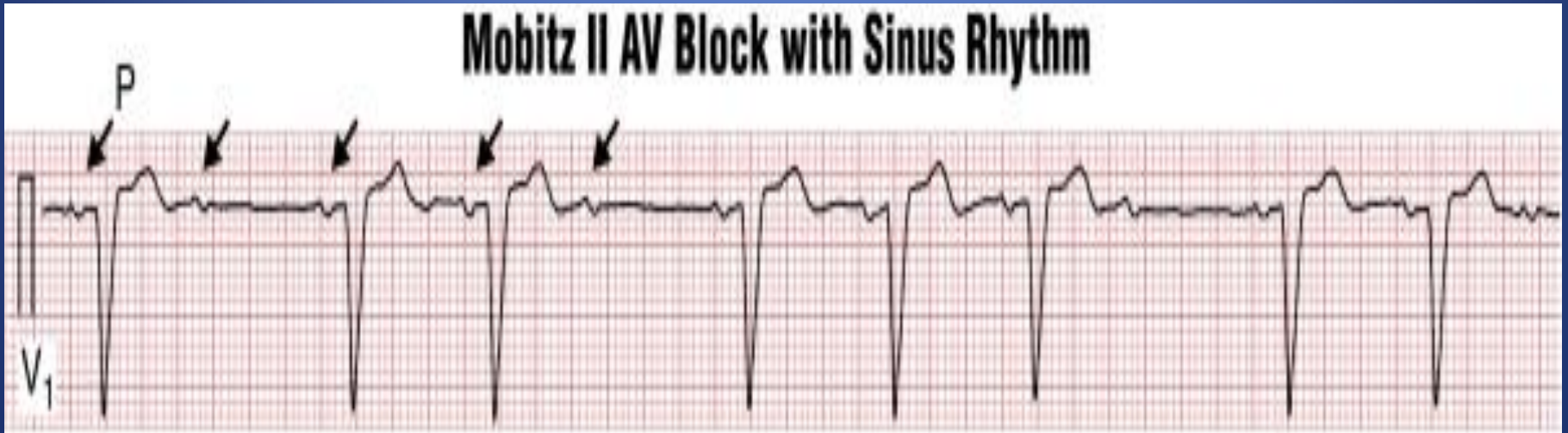
2nd HB Mobitz type-1

Mobitz Type I (Wenckebach) Second-Degree AV Block



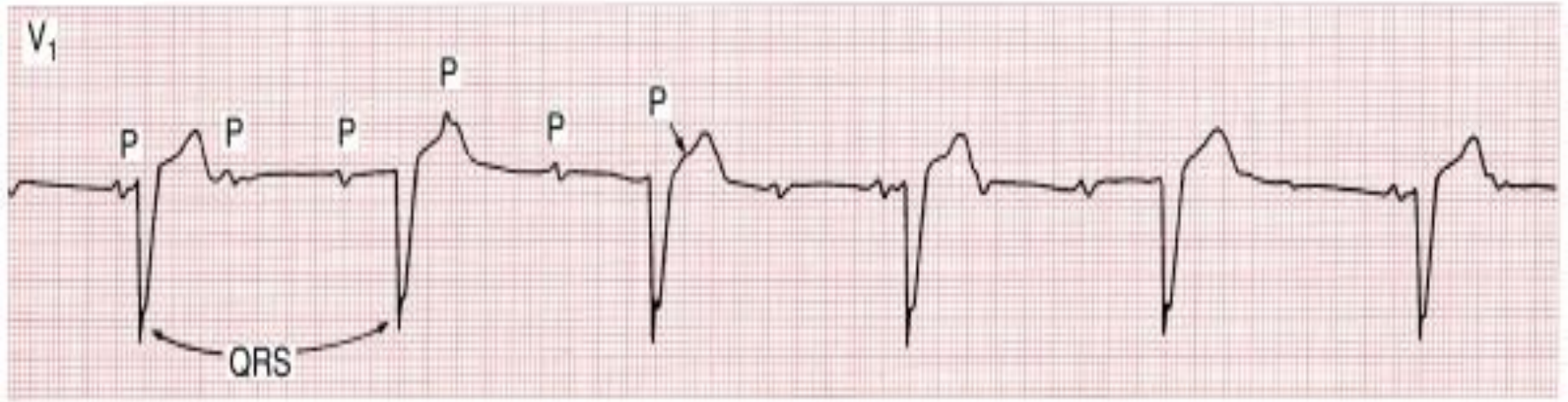
2nd HB Mobitz type-2

Mobitz II AV Block with Sinus Rhythm

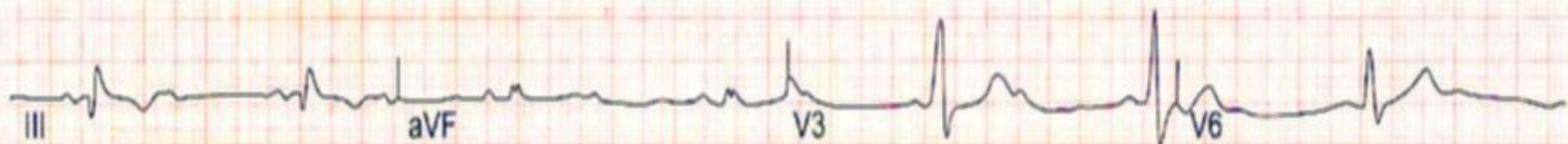
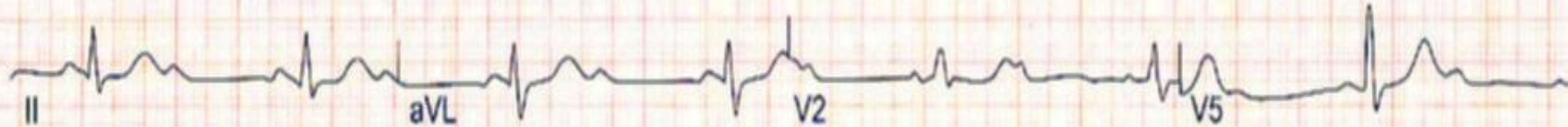
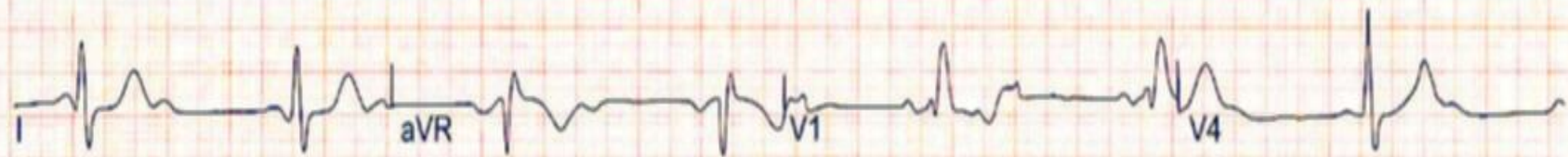


3rd HB

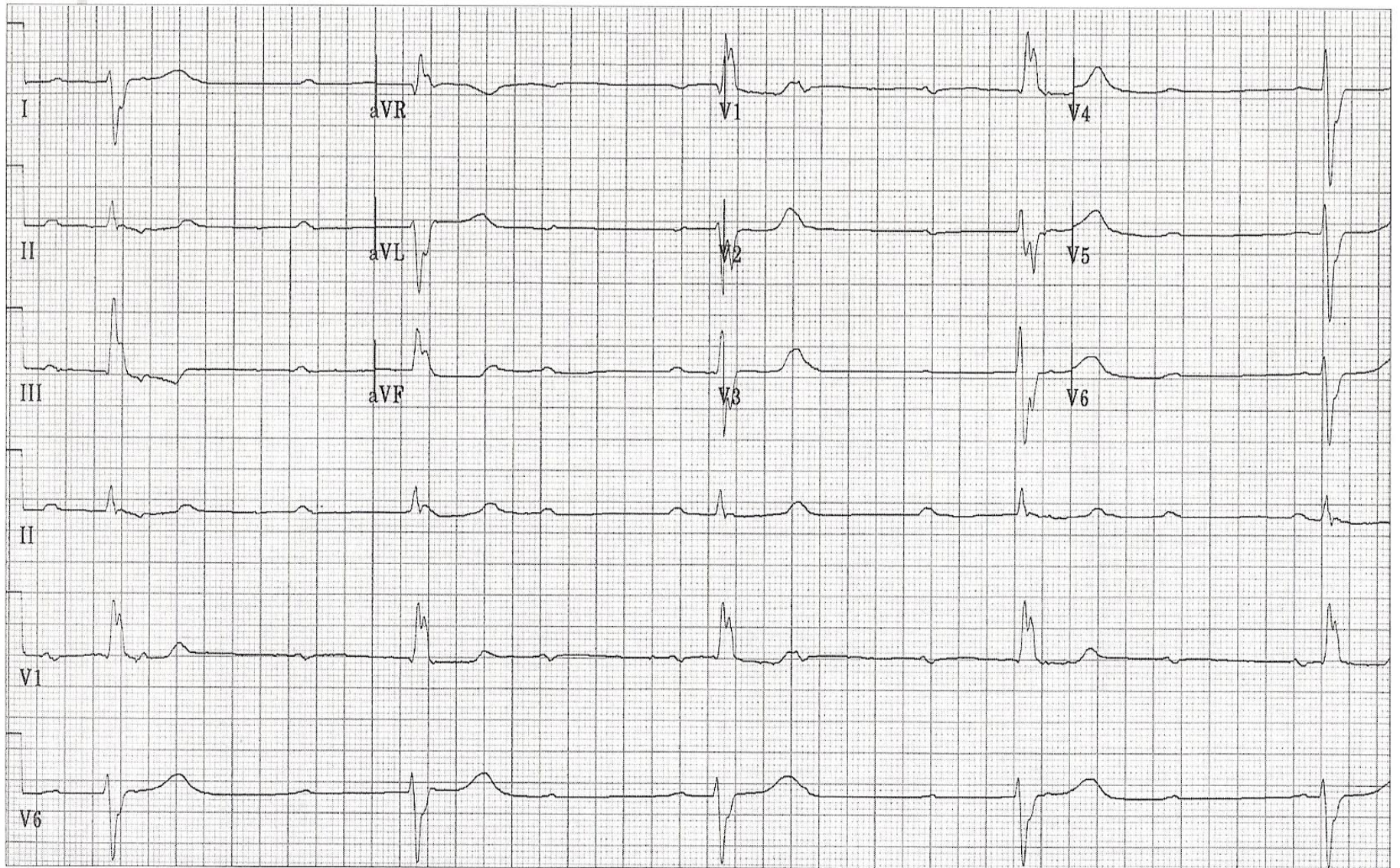
Third-Degree (Complete) Heart Block



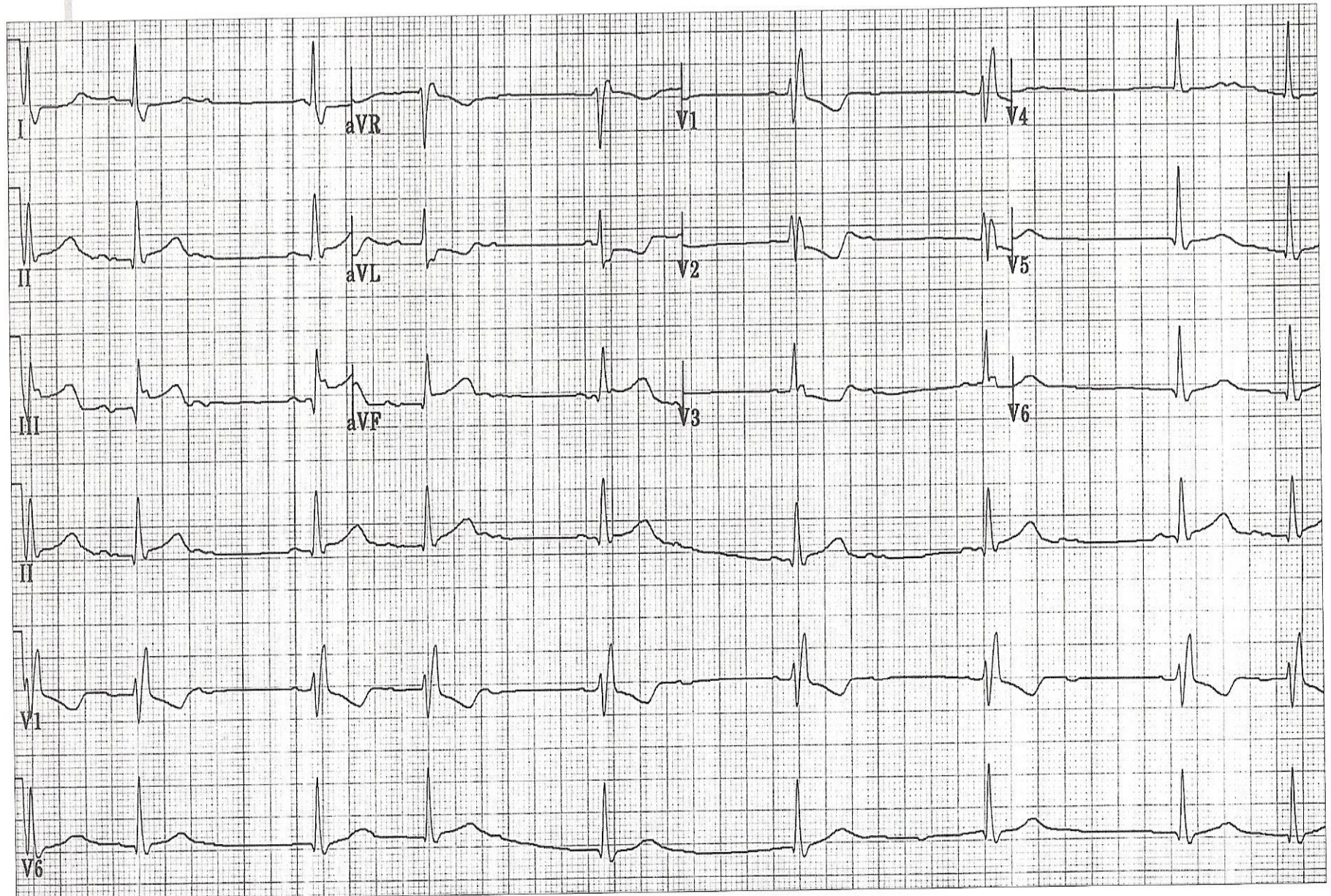




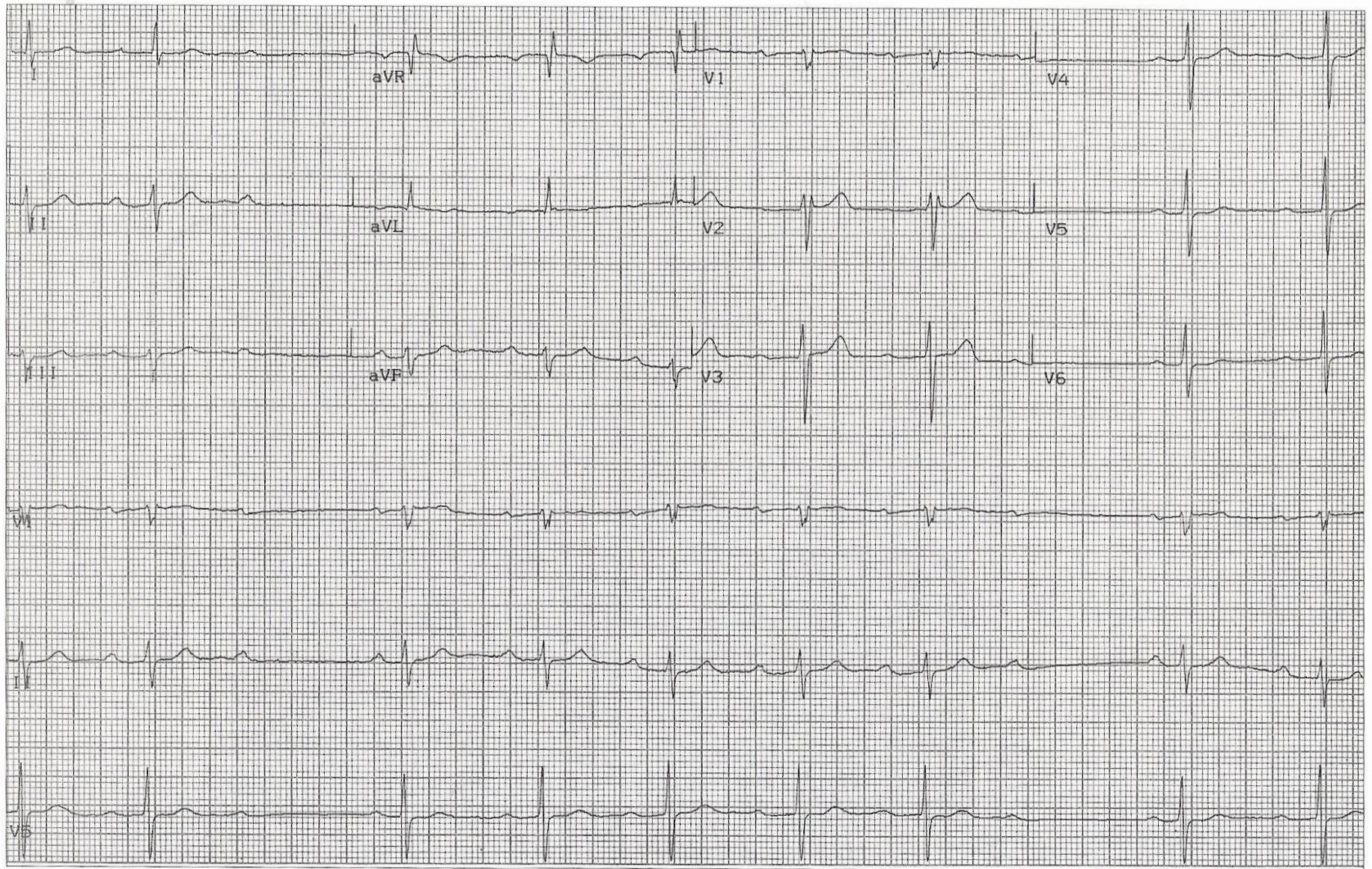
ECG V-1



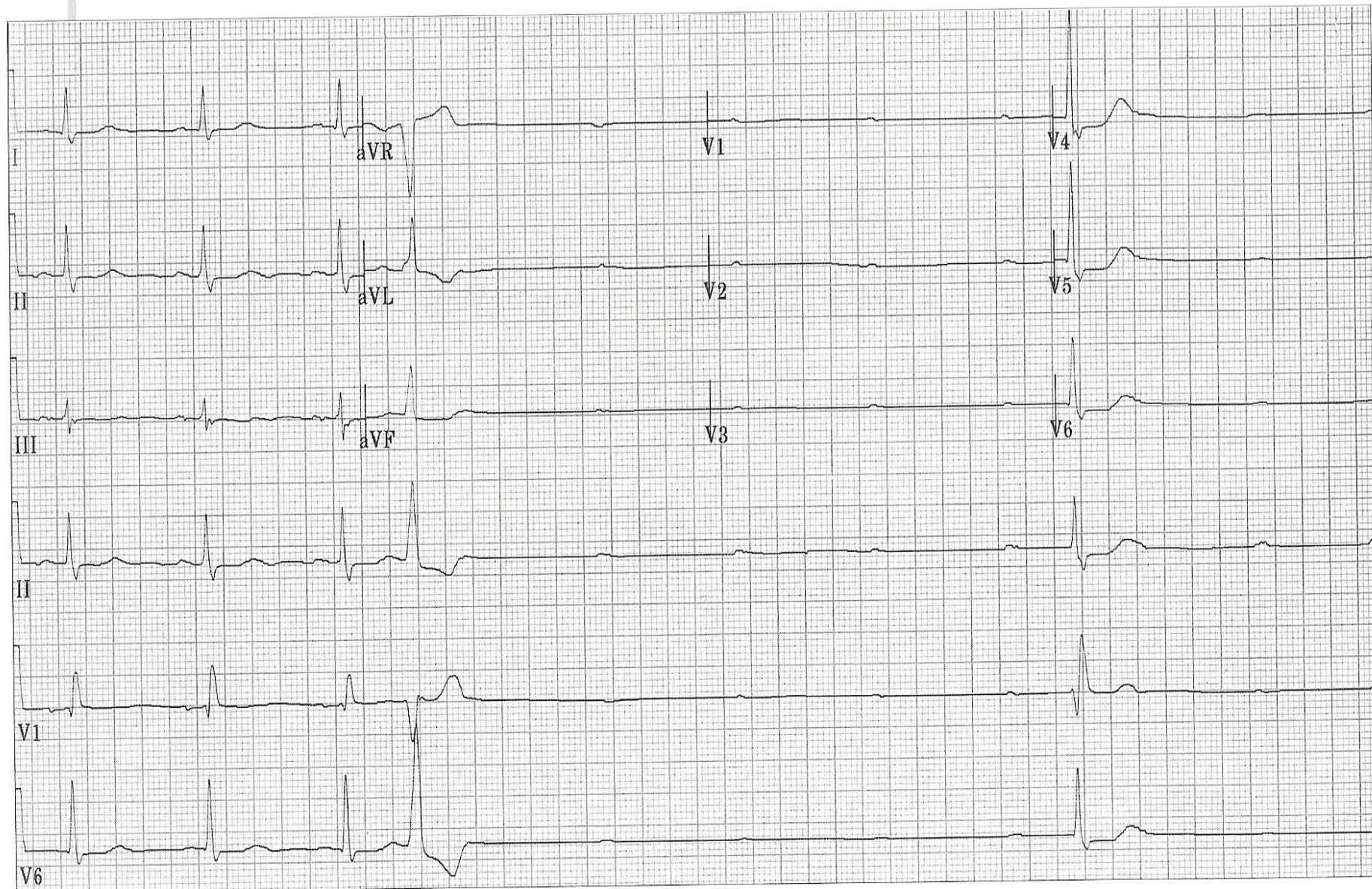
ECG V-6



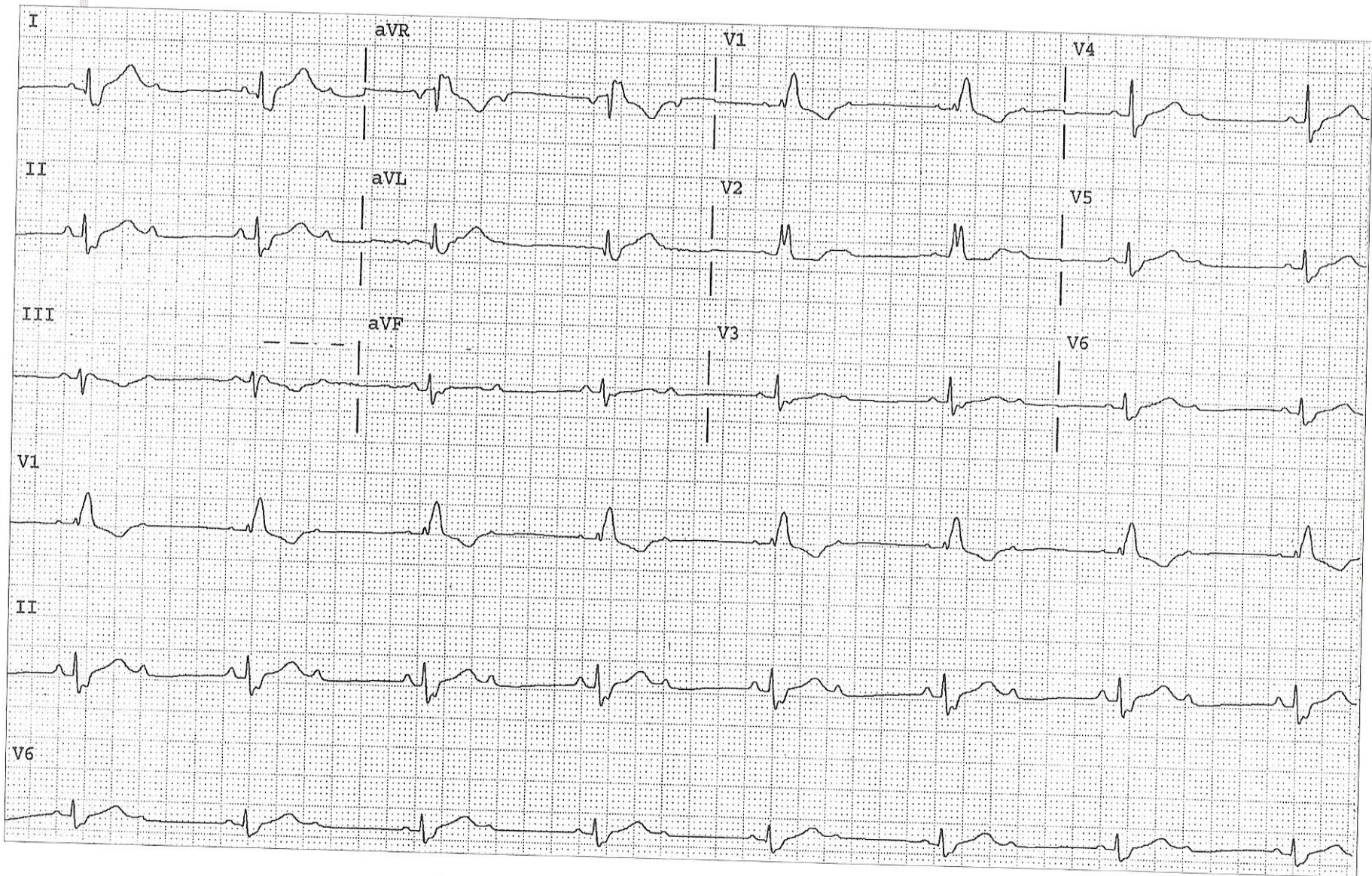
ECG V-15



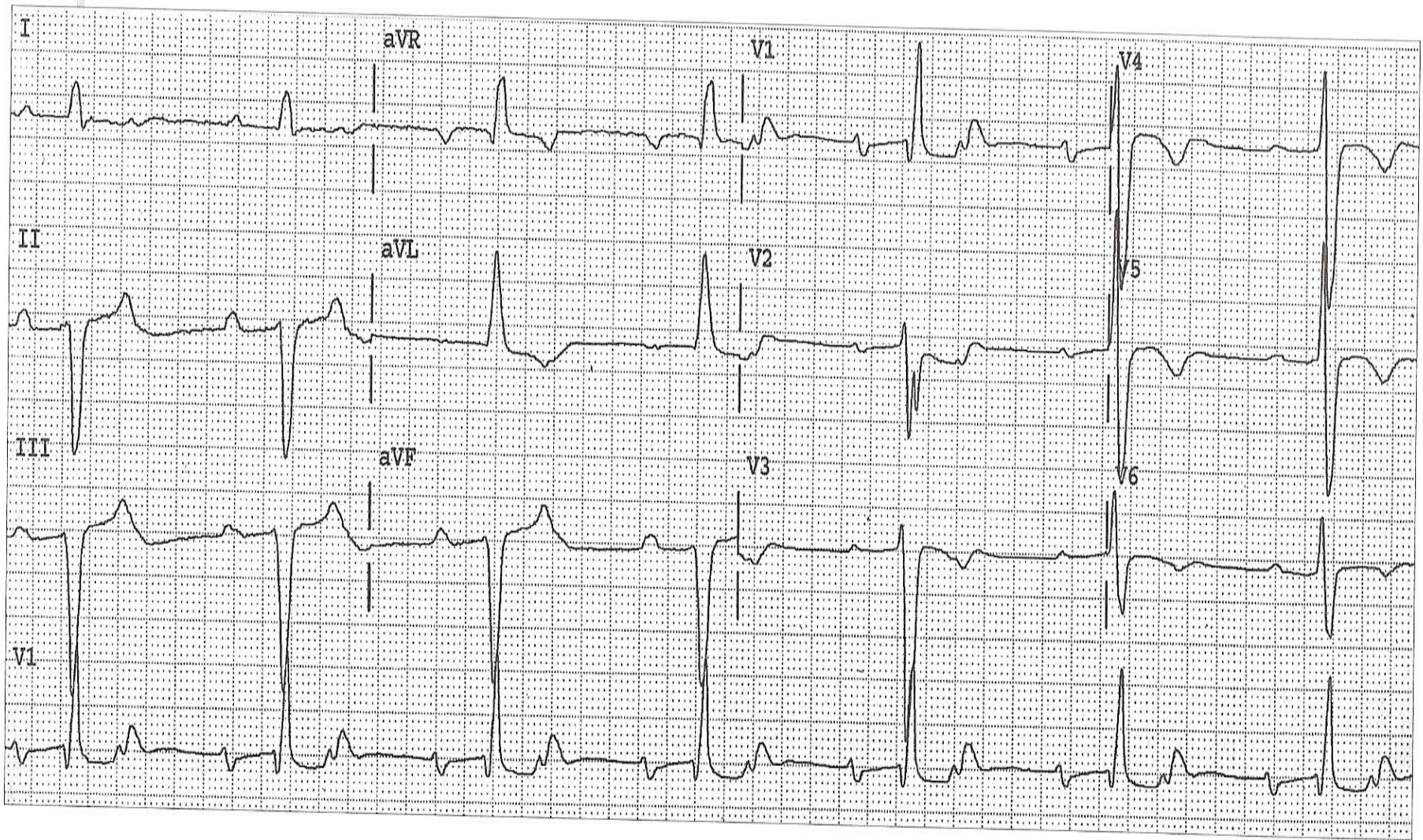
ECG V-22

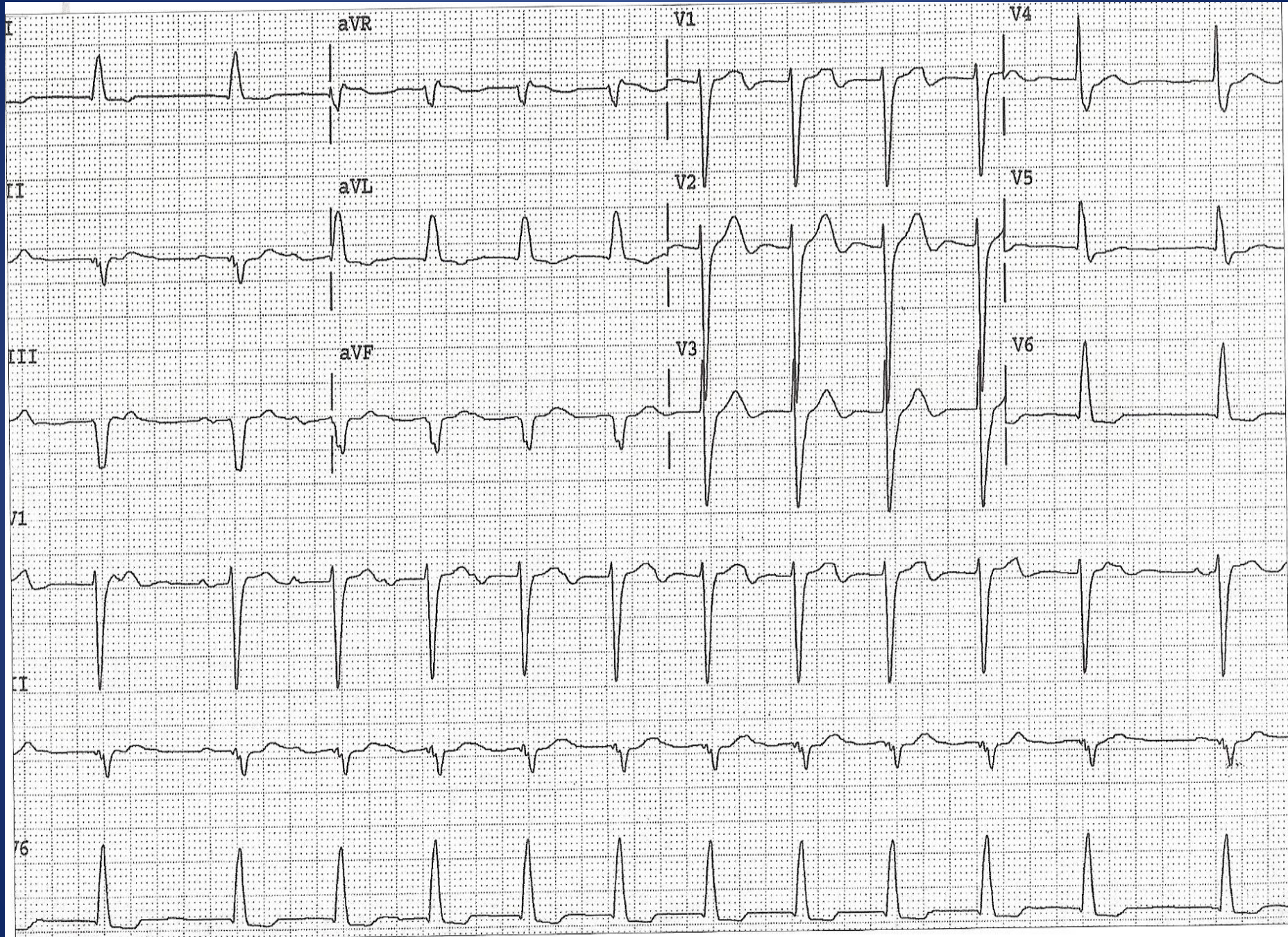


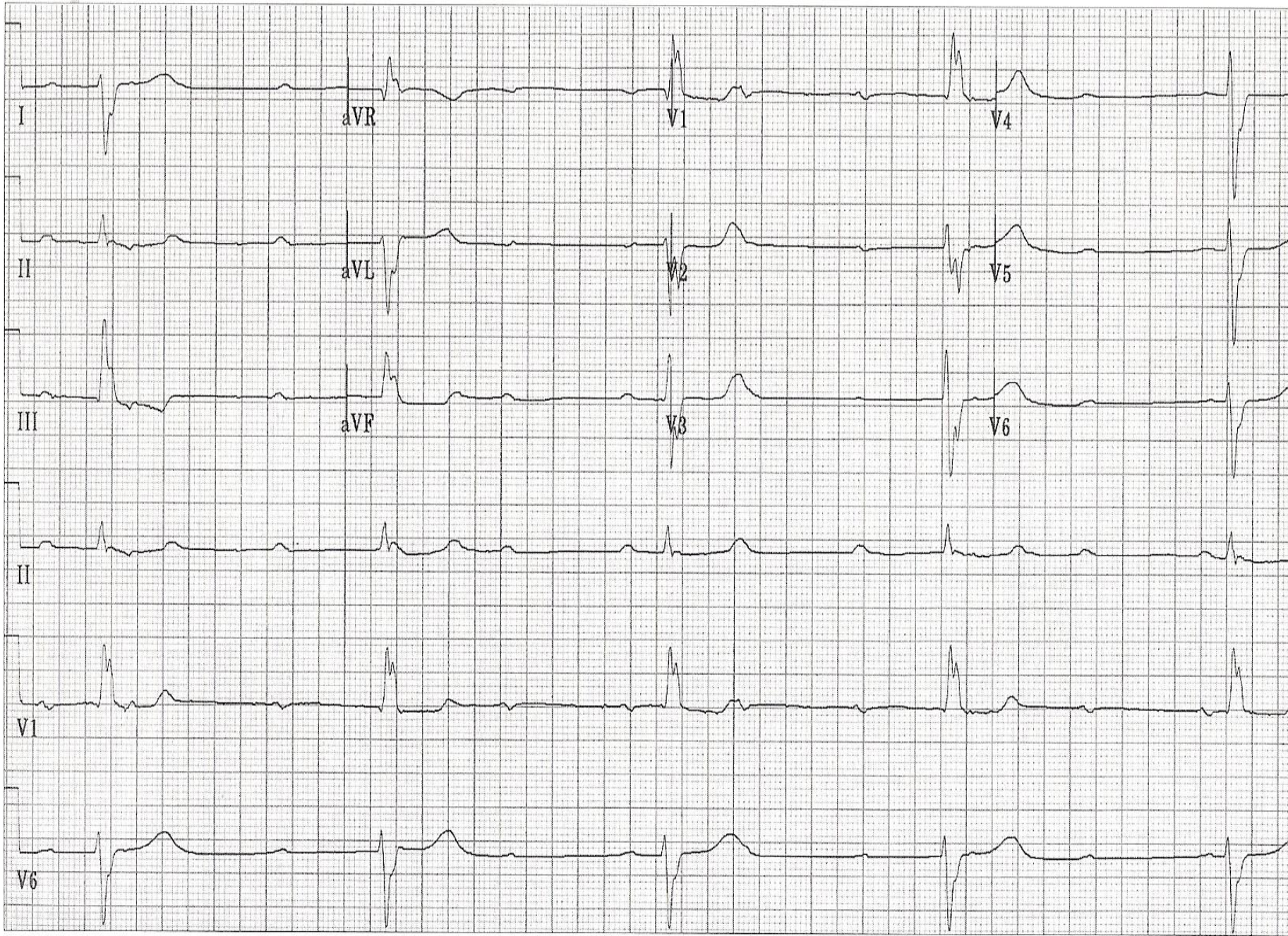
ECG V-26

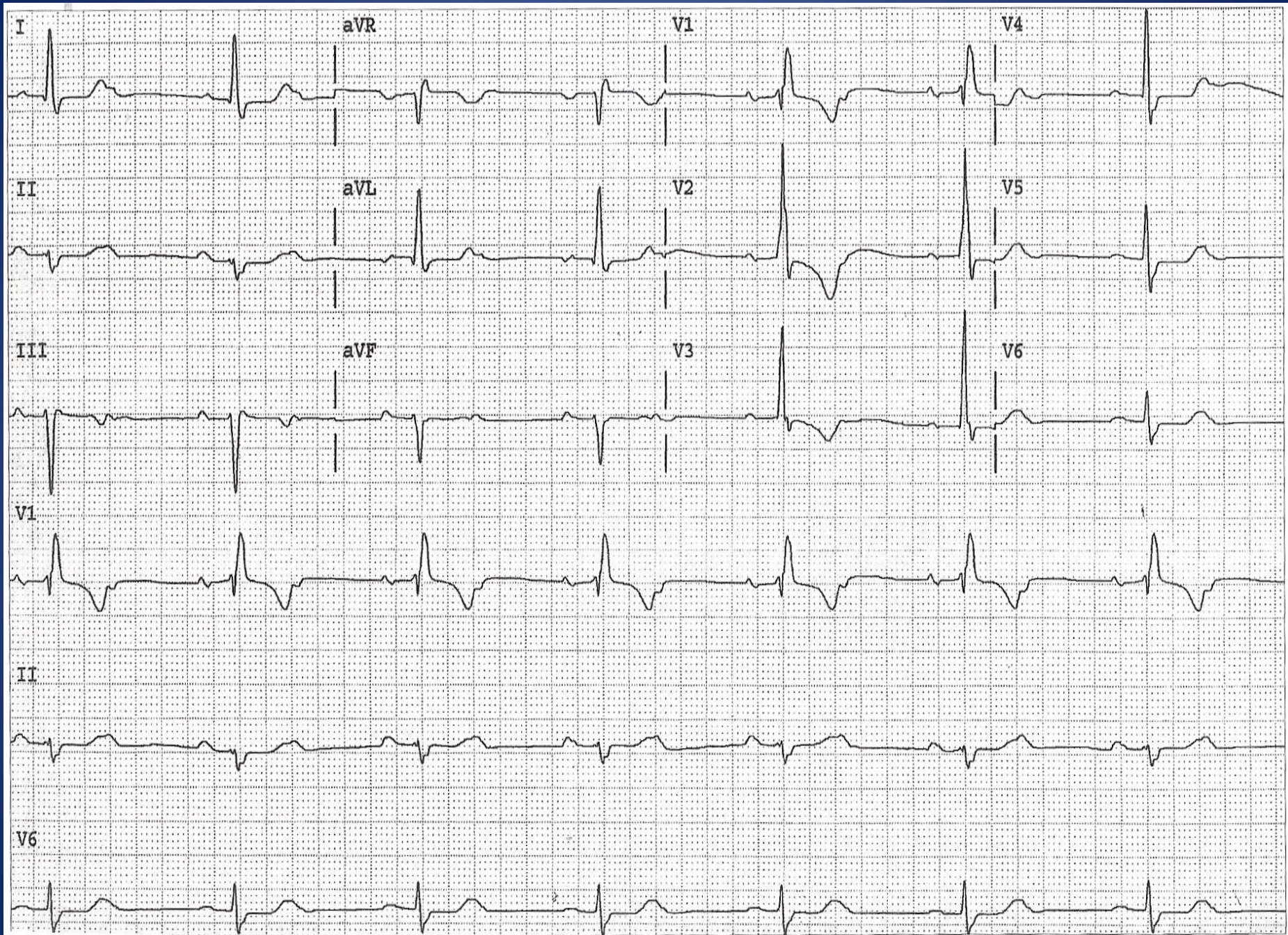


ECG V-27









ECG VI-1

